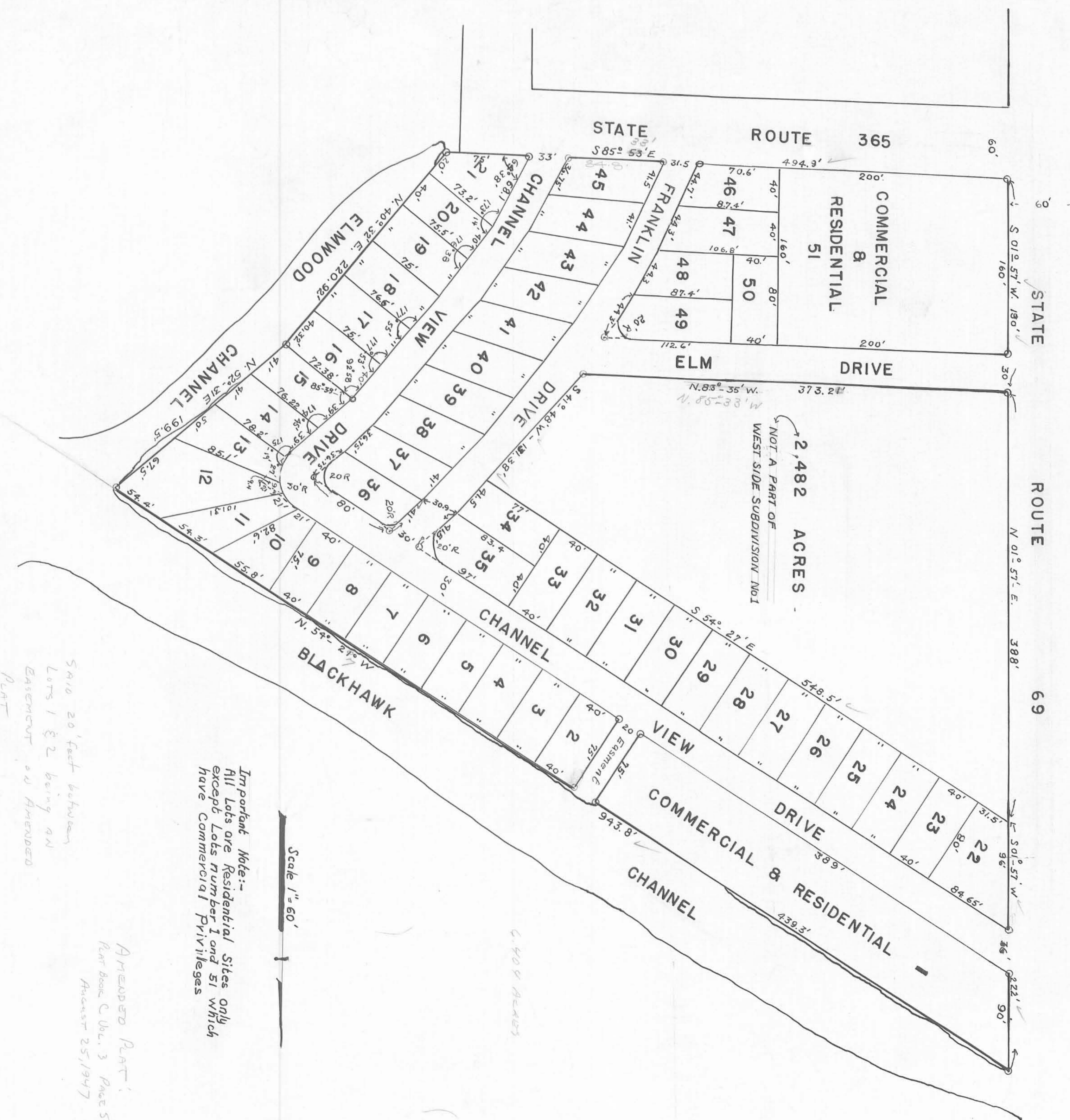


INDIAN LAKE WEST SIDE SUB-DIVISION NUMBER - 1



Important Note:-
All Lots are Residential Sites only except Lots number 1 and 51 which have Commercial Privileges

Scale 1" = 60'

5410 20' feet between
Lots 1 & 2 being an
EASEMENT on AMENDED
PLAT

AMENDED PLAT:
PLAT BOOK C VOL. 3 PAGE 59
AUGUST 25, 1947

ORIGINAL PLAT
PLAT BOOK C VOL. 3
PAGE 40
JUNE 17, 1946