

# Map of **SHAWNEE ISLAND**

**SHAWNEE ISLAND** PART OF

## THE INDIAN ISLES

SITUATED IN **INDIAN LAKE**  
LOGAN COUNTY OHIO  
—1926—

**DEDICATION**

Know all men by these presents that the Pigua Handle and Manufacturing Co. proprietors of the lands indicated on the accompanying plat and report of lots, have authorized the laying out of same which is to be known as Shawnee Island. The Streets, Avenues and Parks therein are dedicated to the public as such forever. In witness whereof the said Company by duly authorized officers, have hereunto set their hand this 22<sup>nd</sup> day of ~~August~~ September, 1926. *Am. Campbell* *President*  
*G. F. Bennett* *Secretary*

State of Ohio, County of Meigs, S.S. Be it remembered that on the 22<sup>nd</sup> day of ~~August~~ September, in the year of our Lord one thousand nine hundred twenty six before me, the subscriber, a Notary Public in and for said County, personally came the Pigua Handle and Manufacturing Co. by its duly authorized officers, the grantors in the foregoing dedication and acknowledged in the signing thereof to be their voluntary act for the purposes therein mentioned.

*Al S. Shively*  
Notary Public  
Meigs Co., Ohio

**SURVEYORS CERTIFICATE**

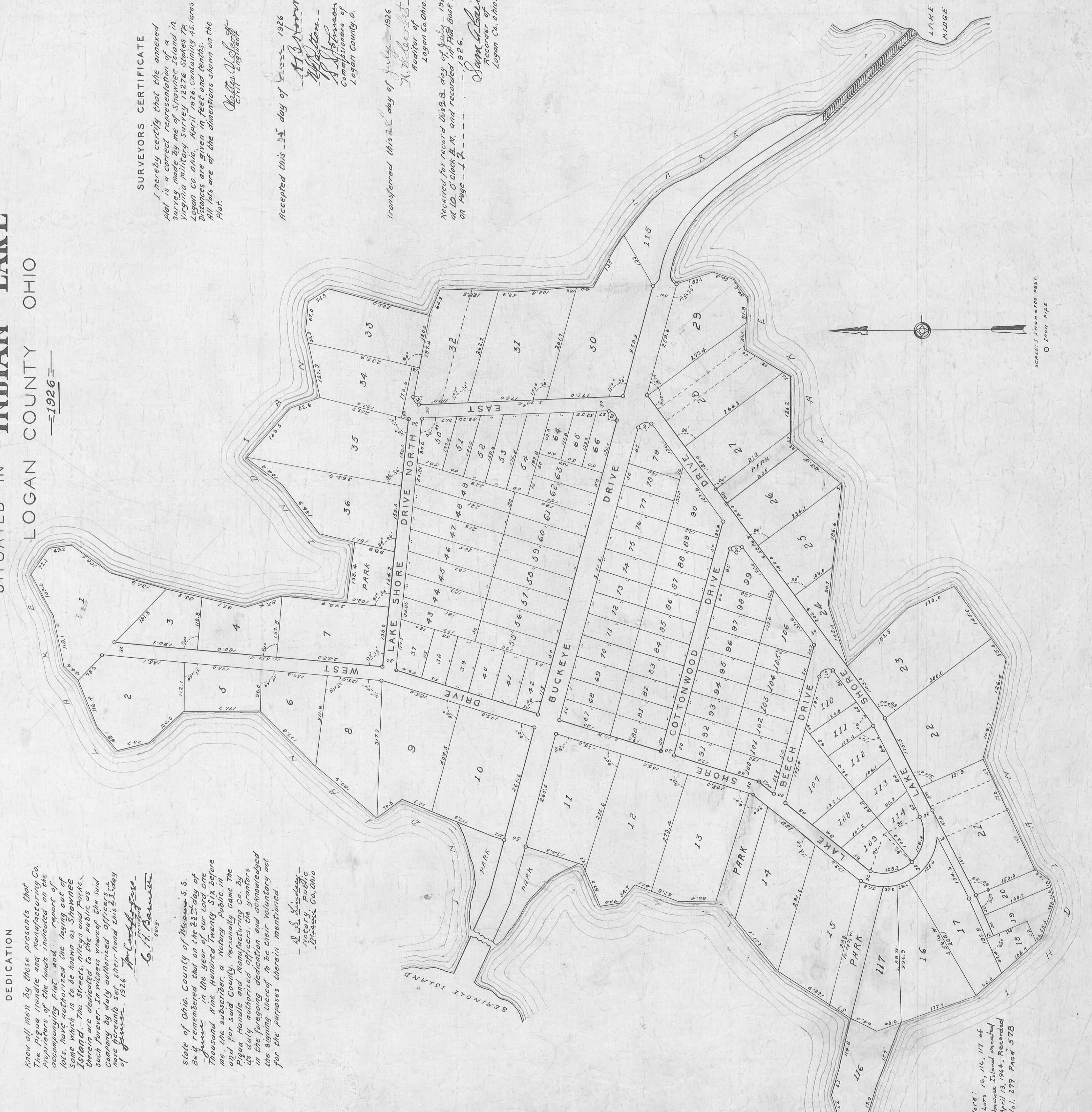
I hereby certify that the annexed plat is a correct representation of land surveyed by me of Shawnee Island in Logan County, Ohio, July 22<sup>nd</sup> 1926. Containing 45 Acres. All lots are given in feet and tenths. All lots are of the dimensions shown on the Plat.

*Walter D. Schmitt*  
Civil Engineer

Accepted this 21<sup>st</sup> day of June 1926  
*H. B. Starn*  
Auditor of Logan County, O.

Transferred this 22<sup>nd</sup> day of July 1926  
*W. H. Barrett*  
Auditor of Logan Co., Ohio.

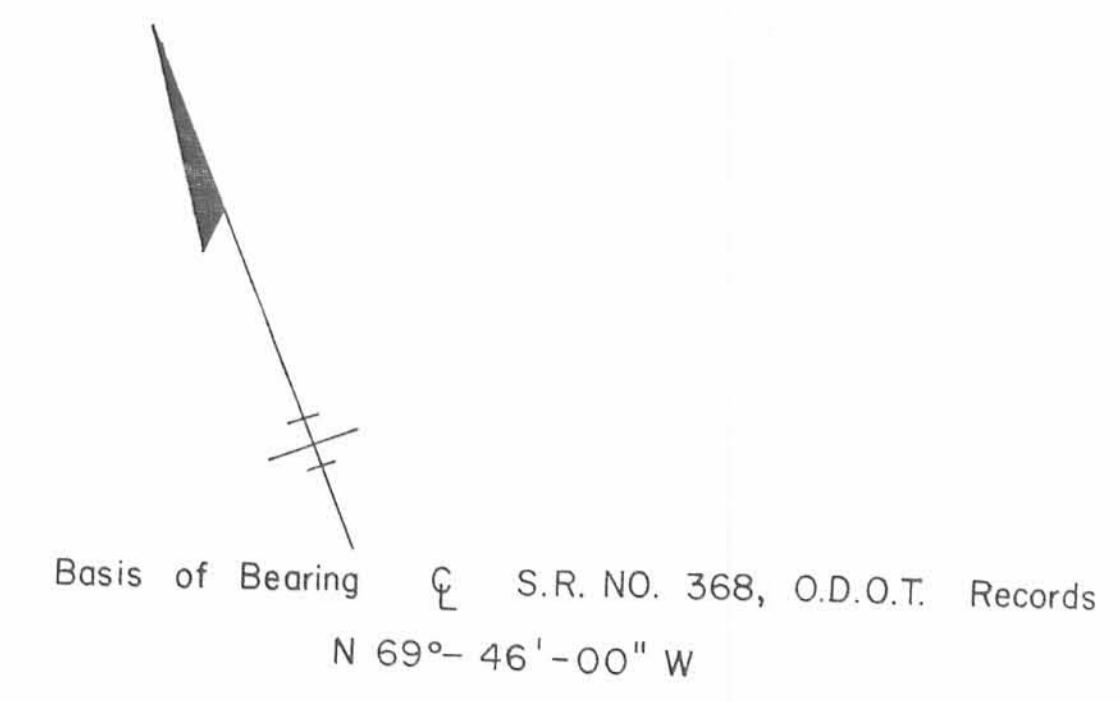
Received for record this 22<sup>nd</sup> day of July 1926 at 10 o'clock A.M. and recorded in Plat Book 6 on Page 17.  
*Sam C. Carter*  
Recorder of Logan Co., Ohio.



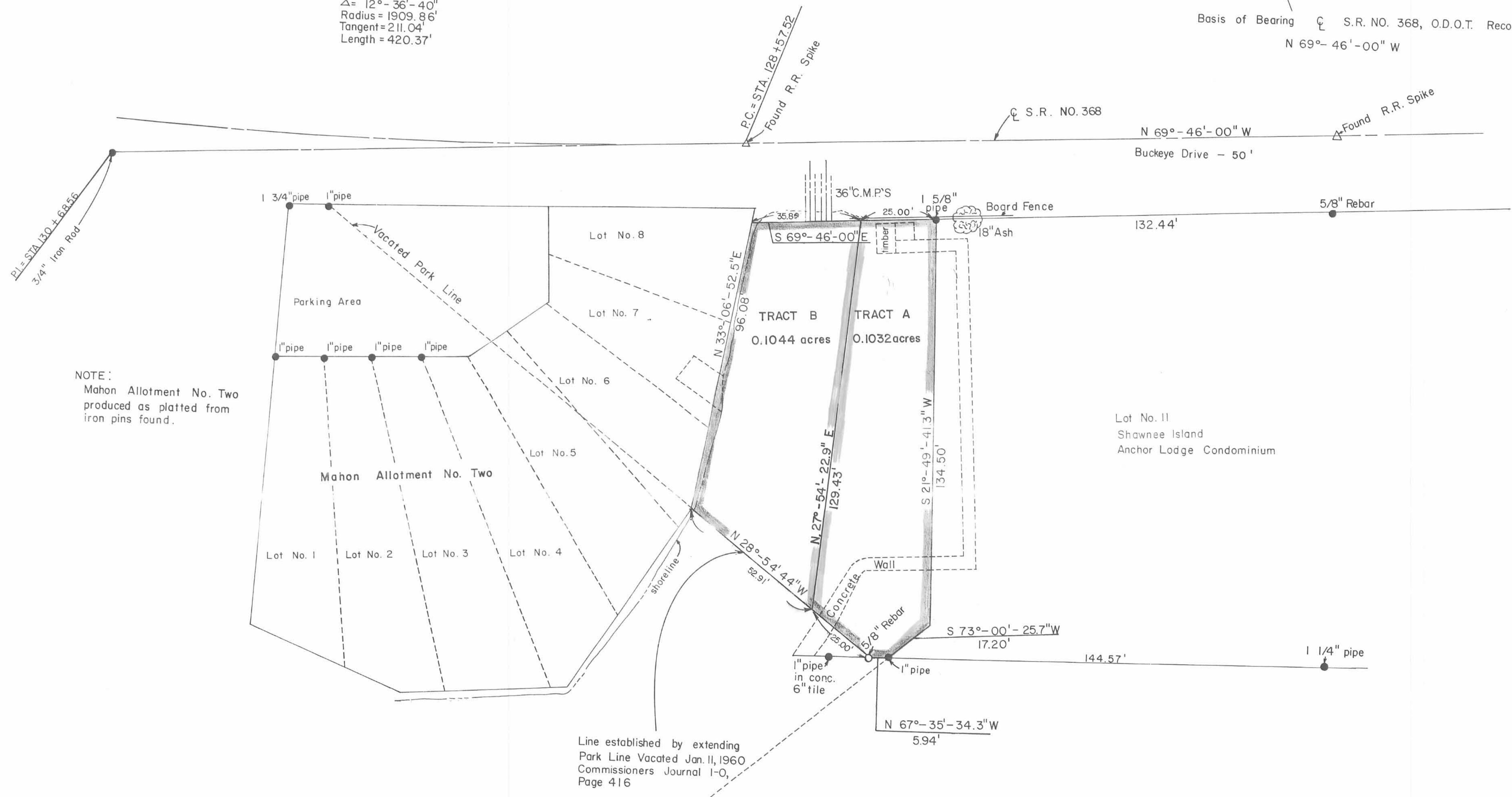
Note: Lots 16, 116, 117 of Shawnee Island located April 13, 1924. Recorded Vol. 299 Page 578



PUBLIC PARK BETWEEN SHAWNEE ISLAND AND SEMINOLE ISLAND  
 STOKES TOWNSHIP  
 LOGAN COUNTY, OHIO 1988  
 VIRGINIA MILITARY SURVEY NO. 12276



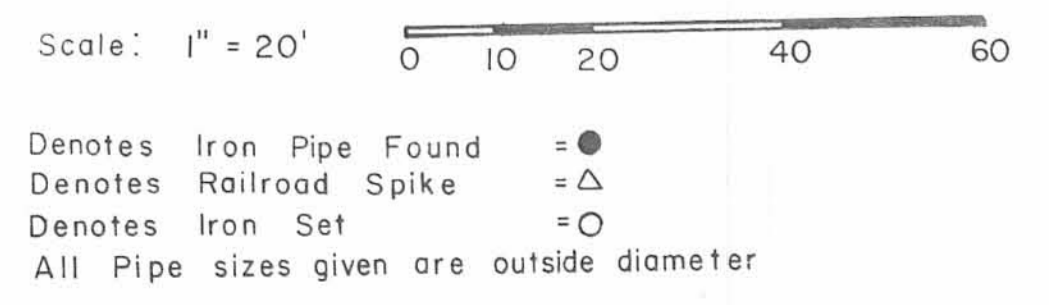
Curve Data  
 $\Delta = 12^{\circ}-36'-40''$   
 Radius = 1909.86'  
 Tangent = 211.04'  
 Length = 420.37'



NOTE:  
 Mahon Allotment No. Two  
 produced as platted from  
 iron pins found.

Line established by extending  
 Park Line Vacated Jan. 11, 1960  
 Commissioners Journal I-O,  
 Page 416

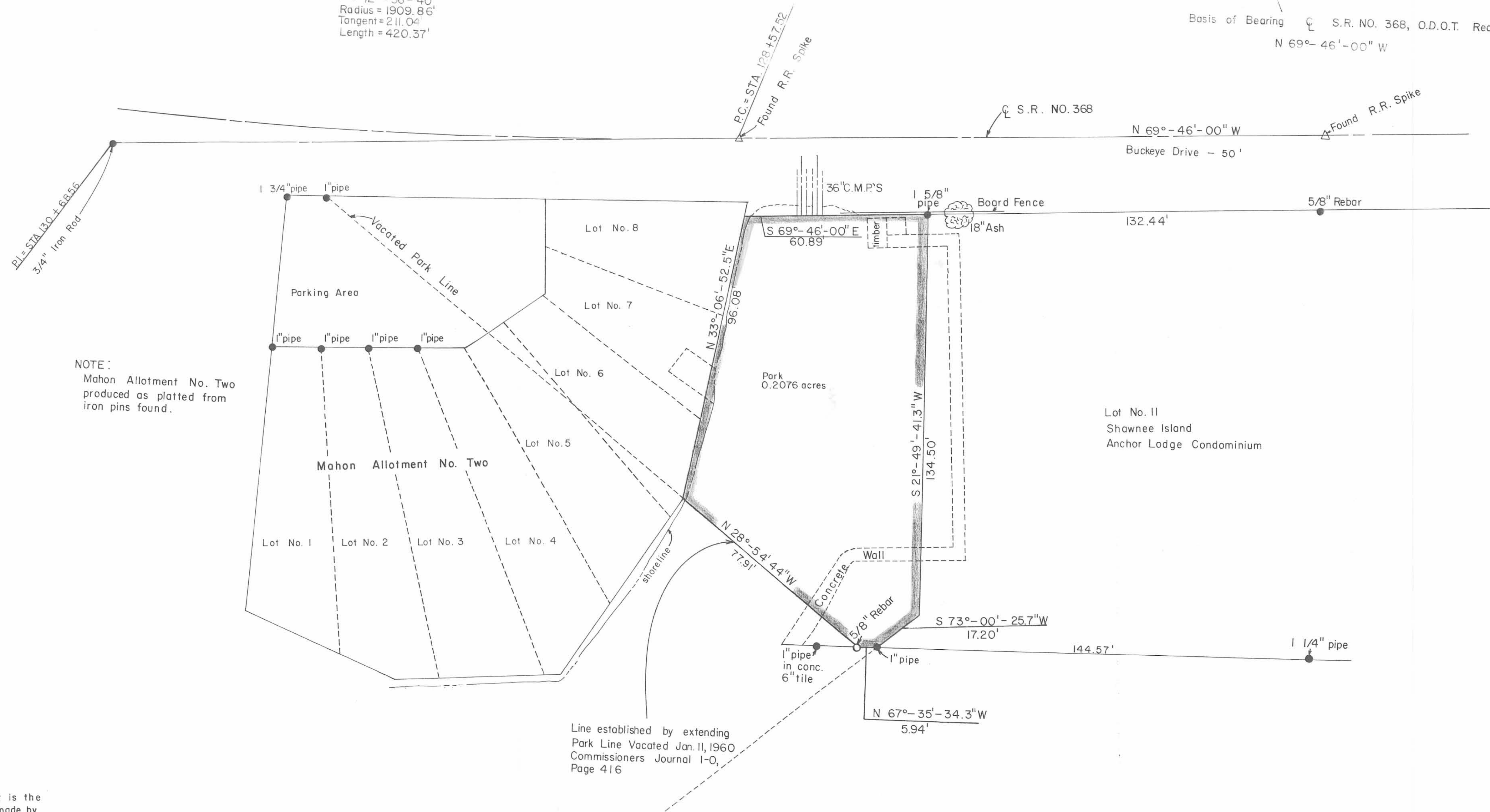
I hereby certify this plat is the  
 result of a field survey made by  
 the Logan County Engineer on  
 September 2, 1987.  
*Chester R. Kurtz*  
 Chester R. Kurtz, P.E., P.S.  
 Logan County Engineer  
 Ohio Professional Surveyor No. 4849



PUBLIC PARK BETWEEN SHAWNEE ISLAND AND SEMINOLE ISLAND  
 STOKES TOWNSHIP  
 LOGAN COUNTY, OHIO 1988  
 VIRGINIA MILITARY SURVEY NO. 12276

Curve Data  
 $\angle = 12^{\circ}-36'-40''$   
 Radius = 1909.86'  
 Tangent = 211.04'  
 Length = 420.37'

Basis of Bearing  $\angle$  S.R. NO. 368, O.D.O.T. Records  
 $N 69^{\circ}-46'-00'' W$



NOTE:  
 Mahon Allotment No. Two  
 produced as platted from  
 iron pins found.

Line established by extending  
 Park Line Vacated Jan. 11, 1960  
 Commissioners Journal I-0,  
 Page 416

I hereby certify this plat is the  
 result of a field survey made by  
 the Logan County Engineer on  
 September 2, 1987.

*Chester R. Kurtz*  
 Chester R. Kurtz, P.E., P.S.  
 Logan County Engineer  
 Ohio Professional Surveyor No. 4849

INDIAN LAKE

Scale: 1" = 20' 0 10 20 40 60

Denotes Iron Pipe Found = ●  
 Denotes Railroad Spike = △  
 Denotes Iron Set = ○  
 All Pipe sizes given are outside diameter