

Earl Carr. lot Surv.  
Sept - Oct 1898.

Meas from N. side Chil. St. - Katang e. side also  
760 ft S. side Col. St. line old scarp house is  
at 4' 5 1/2" S. of + mark on Bena stone E. side  
Start at + mark thence W. with Col. St.

Set stake 4/7/18 208' 5 1/2" = Stake a on alley  
and 4' 1 1/2" N. Carr. lot

Meas S. from Stake a 229' to stake 7 in  
S. line Carr. and 4' 1 1/2" N. of his S. W. L.

Meas E. from stake 7 113' 1 1/2" to S. line Carr  
Stake c, at 4' 8 1/2" S. of Carr. S. E. L.

Meas N. from stake c. 4' 8 1/2" to Carr. L. C.

The Col. St. find lime house is 8"  
north on Col. St. and 1' 8" on alley  
west of lime house

Meas from S. line Carr. 65 1/2' to S. line  
line a. B. straight 2 of 96 1/2' to E. side also  
Meas from X on stone found. hide house 2. on

Col. St. 191 1/2' to N. W. Carr. lot #2

Meas from N. W. Carr. Hide house 2. on Col. St.  
243' to Carr. L.

Columbus St.



Chillicothe St.

See page 168. Surveyor's Certificate

Note N. Carr. is 2' east of east with  
north on office 3/8 1/2" S. of front of office.

See page 168 for plat.

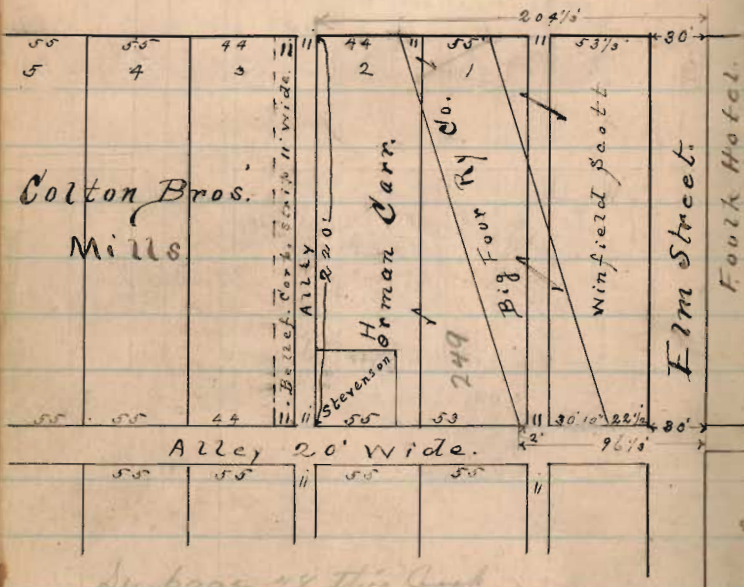
Plat Carr Surv.

Sept 5<sup>th</sup> 1898.

Garf. Ave.

Erm St.

Columbus Ave.



See page 18 this book

Oct 20<sup>th</sup> 1908 find old stake at by Mrs. J. K. & Carl  
 Sept 1898 at 2 feet from side of office building 4.85.3.  
 of N. side said building  
 Meas. from N.E. cor. office building west along corner  
 col. on 44' to west fence cor. N. corner of lot  
 or at present occupied. = 46' on col. line

Lease Surv. Sept 9<sup>th</sup> 1898

Start in cent. Auburn St. line of N. side  
 Mad River St. Thence S. along N. side M.R. St.  
 at cor. of center. (Stakes 15' 3" W of c.)  
 at 219' 3" gr V # 95 + 2 1/4

- 14 1/4 front lease pas. W of cent - 36.9"
- 53 1/2 = gr V # 96 + 1 1/2
- 74 1/4 5 cent lease pas. W of cent - 37'
- 102 1/2 gr V # 97 + 1/2
- 117.2 25 cent lease pas. W of cent 33.2"
- 150.9 25 cent " " house = " " 34.0"
- 152 gr V = 98
- 171 = N.S. & 25 cent lease pas. = N 33.5' from cent
- 185 = S.E. " " " = W of cent 33.5"
- 199 = S.E. " " house = " " 34.4"
- 202 = 3m x stands 17' 3" W of cent St.



Leaves Run Sept 9<sup>th</sup> 98

Hub Ave

11.50

GP Lane

97+48

95+28

Mad River St.

alley

Pat. Ave

Leaves Run Sept 9-98

Col.

Top Hyd. Pat. of M. R. St	2.57		56.80
Bot & strip S.E. & always house	87	1.70	58.50
Top & always porch floor	.22	.65	59.15
Top stone grade light-97+48	FS .40		58.97
SM 202 from outside	7.18	.48	59.45
gr 7 # 98	3.57	3.61	63.06
Bot & strip S.E. & always house	1.18	3.39	65.45
Top floor rec " " porch	43	.75	66.20
Top gr 7 # 97+1/2	11	.32	66.52
Top hyd. Pat. of M. R. St.	9.84	9.73	56.79
Top gr 7 # 97+1/2	FS: 11	9.73	66.52
Bot & strip S.E. & leaves rec	1.30	5.29	71.79
Top gr 7 # 96+1/2	3.59	1.79	70.00
" 7 # 95+27/4	2.37	1.22	71.22
Top. pick 12' or. of electric line x small off # 95+27/4	2.42	.05	71.17
" " " " # 96+1/2	3.51	1.09	70.08
" " " " 97+1/2	6.92	3.51	66.67
" " " " # 98	10.65	3.73	62.94
gr 7 # 98	10.52	.13	63.07
Stone entrance M R St. and curb 2'	1.88	2.64	71.71