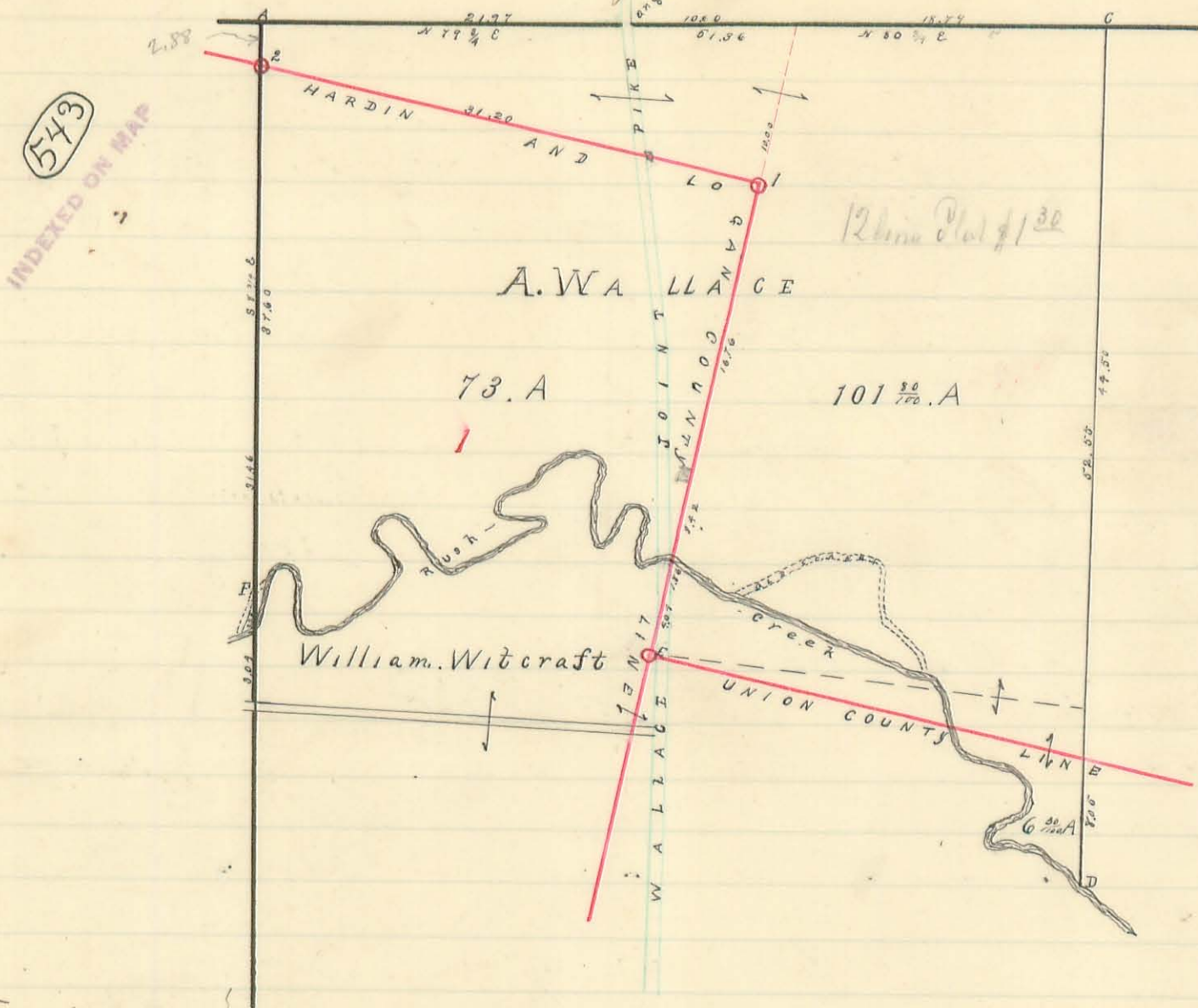


(1)

Plat of Mil Survey No 9960
10042

Original proprietor W Rudolph Original Subdiv 2000 acres
Showing the location of County line and acres on each side of line
lying in both Counties together with the distances in chains from survey
and other corners to the County line



See Map P-24 Page 1
See Field Book 619 Page 70-73
See Road 139 Plan X-38

Field Notes

Index letters refer to corners and posts as indicated on plat, Index numbers refer to owners and acres omitted from plat. All courses and bearings given are magnetic. Course of County line N 87° 10' W
 a North west corner of survey white oak 30" (one of orig cor trees)
 " N 30° W 13 3/4 links also sugar tree stump (one of orig cor trees)
 " N 77 1/2° E 33 links also buck 28" N 5 3/4° E 47 1/2 links also
 " buck 20" S 45 1/2° E 55 1/4 links buck and ironwood original corner trees down
 " and gone no trace remains
 d post in north line of survey
 e buck 15" S 5 1/2° E 10 3/4 l buck 26" dead N 30 1/2° E 17 1/2 l sug 20" S 65 3/4° W 17 l
 d post on north bank rush creek
 e Berea stone monument corner Union County
 f post in west line sur and north bank old chan oak creek
 " cottonwood 22" S 86 1/4° E 33 l white hickory 10" S 2 3/4° E 3 1/2 links
 o 1 Berea Stone monument N E cor Logan Co
 o 2 Berea Stone monument on survey line NW cor survey
 " N 8 3/4° W 2.88 chains N E corner Logan Co S 87° 10' E
 " 31.20 chains buck 15" N 41 1/4° E 90 links buck 14" S 45 1/2° E 75 3/4 links
 Free Pikes indicated by green ink. Township and County roads by black ink
 acres in each tract as surveyed marked in black ink acres in green ink
 taken from records. Original survey lines indicated by wavy lines
 in black ink distances in chains by actual measurements in black ink
 Scale 10 chains per inch
 N H Dolwell Es Sur Hardin Co
 S A Buchanan " " Logan

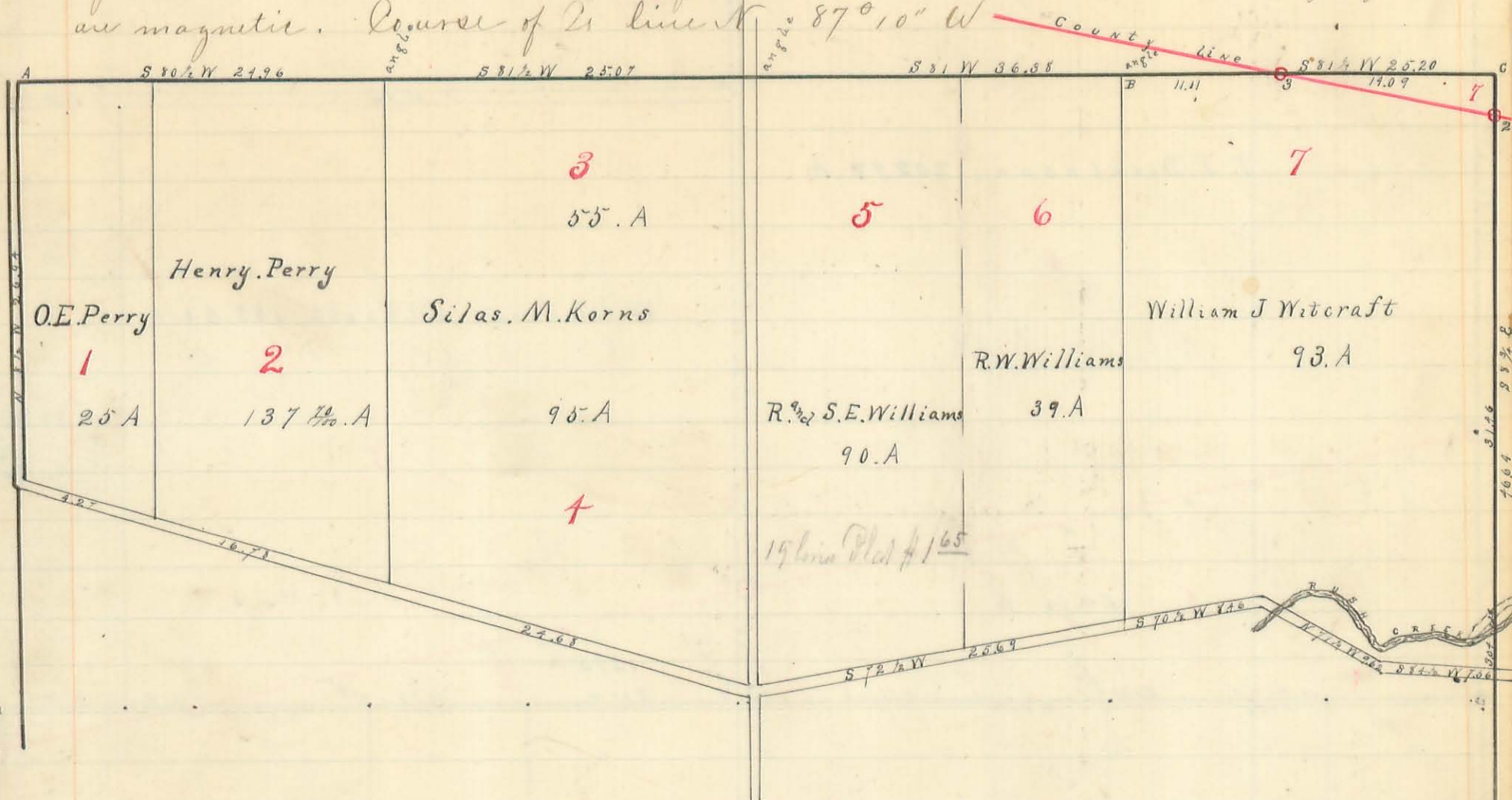
544

INDEXED ON MAP

Plat of Mil Sur 9959

Original proprietor Robert Mauss Original quantity 999²/₃ acres showing location of County line and acres on each side of line in tracts lying in both counties together with the distances in chains from survey and other corners to the County line

Index letters refer to corners and posts as indicated on plat. Index numbers refer to corners and acres omitted from plat. All courses and bearings given are magnetic. Course of Co. line N 87° 10' W



to Aug 24" (old corner and survey line tree) N 81 1/4 E 18 3/4 links also aug 12"
 " (old corner tree) N 57 1/4 E 9 1/2 links, also red elm (old corner tree) dying N 73 1/4
 " west 18 1/2 links also Aug 9" (new tree) S 44 1/2 E 33 3/4 links. for all other corners
 " on north and east lines of survey see plats of Surveys 10042 and Survey 12280

Tree Pikes indicated by green ink. Township and County roads in black ink. Acres in each tract as surveyed marked in black ink. Acres in green ink from records. Original survey lines indicated by heavy lines in black ink. Distances in chains by actual measurements in black ink. Scale 10 chains per inch

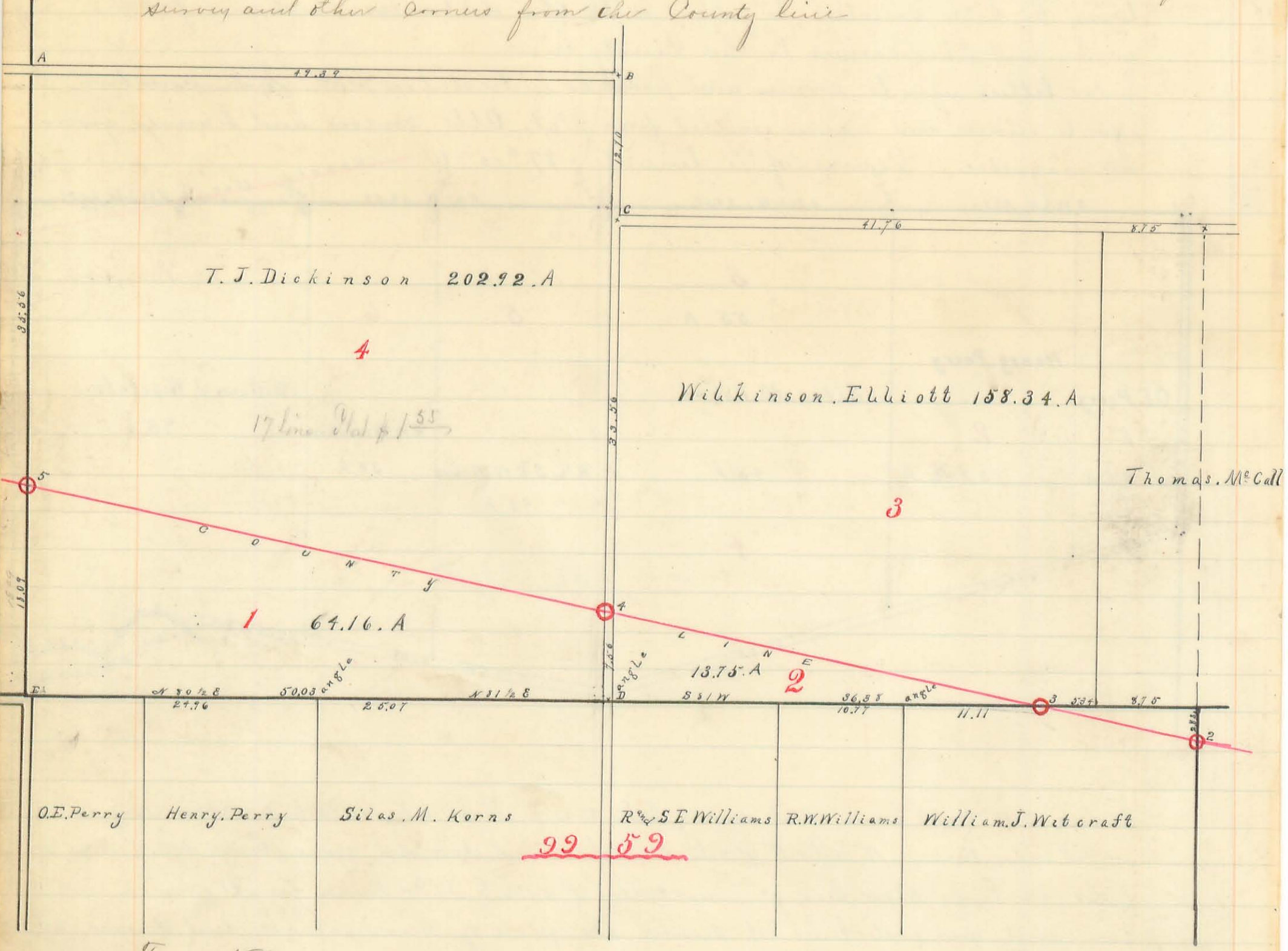
Done in the years 1884-5-6 by
 N. H. Colwell Co Sur Hardin Co
 J. A. Buchanan " " Logan " "

545

INDEXED ON MAP

Plat of Mil Sur N^o 12280

Showing location of County line and acres on each side of line in tracts lying in both Counties, together with the distances in chains from survey and other corners from the County line



Field Notes

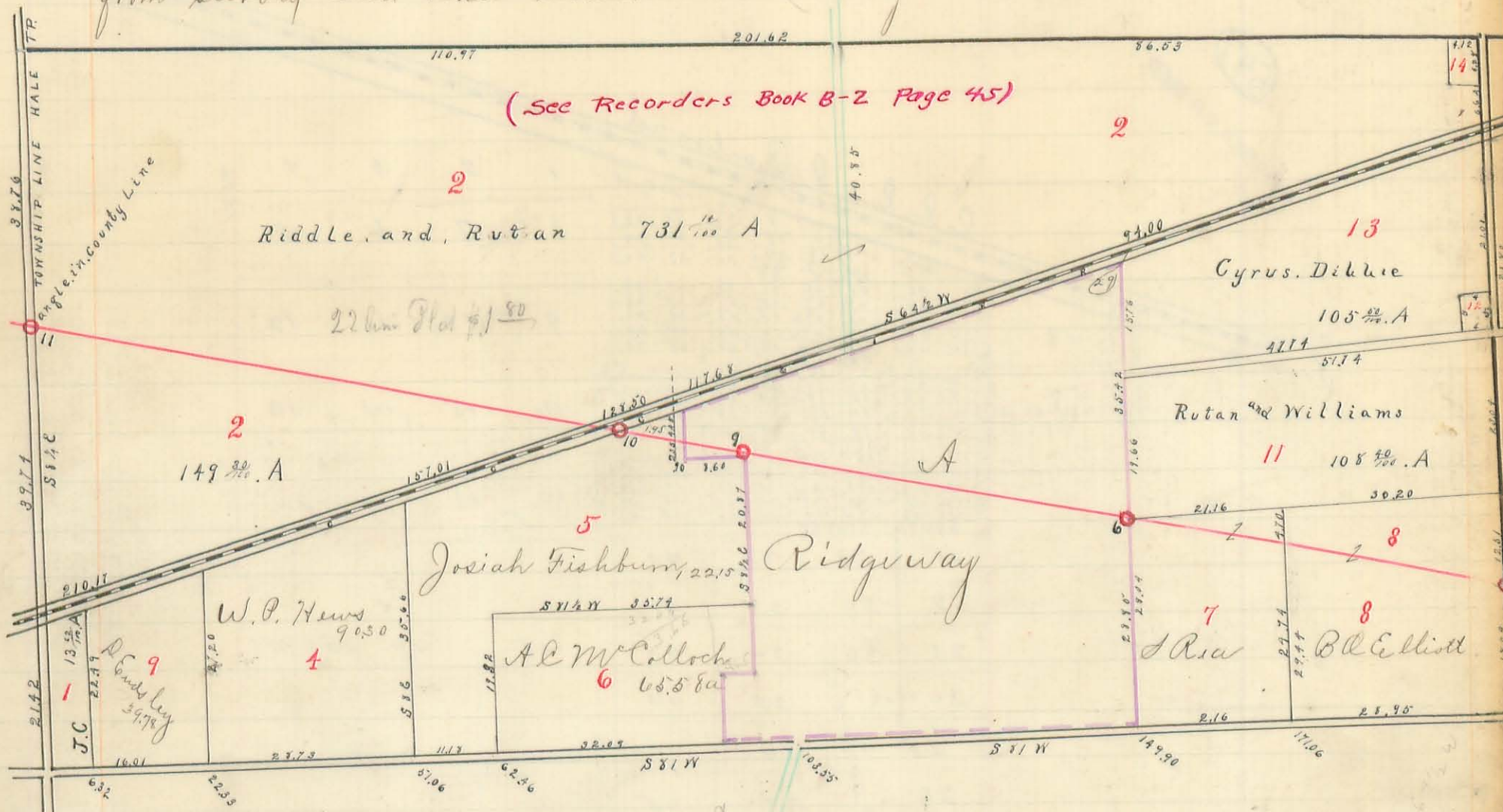
Index letters refer to corners and posts as indicated on plat. Index numbers refer to owners and acres omitted from the plat. All courses and bearings given are magnetic. Course of County line N 87° 10' W

- W Post center of road
 - B Maple 28" S 41 1/2 E 87 1/2 l. White hickory 9" N 43 3/4 E 56 3/4 links
 - C Oak 24" N 24 1/2 W 146 1/3 links Elm 24" N 31 1/4 E 134 1/3 links
 - d Sycamore 14" S 82 1/4 W 254 1/2 links, Shel Hick 4" S 53 1/4 E 49 links
 - " Maple 18" N 57 3/4 E 61 links
 - e S. W. Corner Sur. Stake, Stone, S 11 E 11 links
 - f N. W. Corner Sur N^o 7960 / 7004 (which see)
 - o³ Berea Stone monument on Survey line
 - " Elm 15" S 40 3/4 E 16 3/4 links Swamp ash 8 N 38 1/4 W 31 links
 - o⁴ Berea Stone monument 25 feet west of center of road
 - o⁵ " " " on West line of Survey.
 - Sycamore 4" S 48 1/2 W 10 1/2 links Sycamore 5" N 37 1/4 W 22 3/4 links
- Five Pikes indicated by green ink, Township and County roads in black ink
 Acres in each tract as surveyed marked in black ink. Acres in green ink taken from records. Original survey lines indicated by heavy lines in black ink
 Distances in chains by actual measurements in black ink

546
INDEXED ON MAP

Plat of Survey 10239

Original proprietor N Sawyer Original quantity 1808 1/2 acres
showing location of County line and acres on each side of County line
in tracts lying in both Counties, together with the distances in chains
from survey and other corners to the County line



Field Notes

Index letters refer to corners and posts as indicated on plat. Index numbers refer to owners and acres omitted from plat. All courses and bearings given are magnetic. Course of County line S 87 E

- 14 County 2.60 acres
old stake in survey line corner to farms 8 and 11
- 5 See plat 12280
- 6 Corner Stone monument on County line and east line Ridgeway Corp
- 9 " " " " " " and east line out lot 57 Ridgeway
- 10 " " " " " " and 50 feet from center I.C. & R.R.
- 11 " " " " " " and 25 feet east of center of public road
- " and west line of survey Oak 5" North 40 E 26 1/2 links also Oak 9" S 63 1/2 E 33 1/2 links

4 Ridgeway see plat

5 R.P. Dickens 60 acres in Hardin Co. 40 acres in Logan Co 20

12 Agnes Sh 1/2 A lot 400 x 500 sh. The County line is a straight line from the N.E. corner of Logan County to the west line of Survey 10239 at 25 feet west of monument No 11 and at that point there is a deflection in the line to the south of 29' (westly nine minutes) thence a straight line to monument No 14 on west side of free pike in Survey 9977 (which see) the magnetic bearing of County line west of monument No 11 is same as it is east of same viz S 87 E supposed result of local attraction on needle

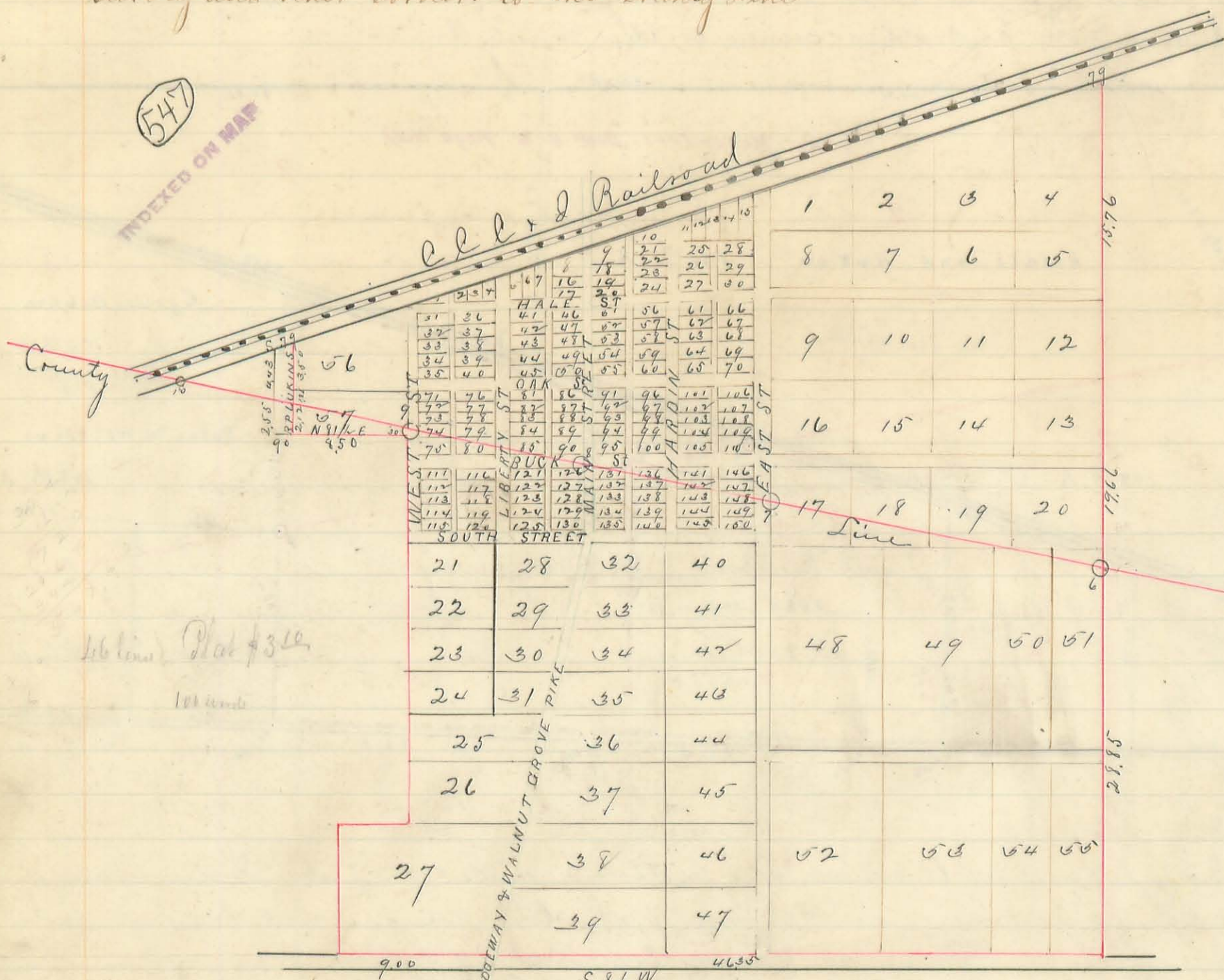
Free pikes indicated by green ink Township and County roads in black ink
Acres in tracts as surveyed in black ink, acres in green ink taken from the records. Original survey lines indicated by heavy lines in black ink
distances in chains by actual measurements in black ink

Scale 20 chains per inch

N.H. Colwell, Co Sur Hardin Co
J.A. Buchanan " " Logan " "

Hardin and Logan County Line Ridgway

Showing location of County Line with the distances in chains from survey and other corners to the County Line



Field Notes: Index letters refer to corners and posts as indicated on the plat
 Index numbers refer to owners and acres omitted from the plat
 All courses and bearings given are magnetic

- 06 Bera Stone monument east line of Ridgway Corporation
- 07 " " " near east side of East street
- 08 " " " on west side of Main Street
- 09 " " " " " of west street and at 30 links north of the "NE cor of out lot N° 07
- a In center of Mill yard tramway 2 feet below surface ground original stone and " brick bats planted by Surveyor when laid out town plat as the SW corner to " in lot N° 1. On said original stone the undersigned Surveyors placed another stone marked X on the top. From said stones and corner 38° 35' E along the east side of west street 19.66 chains to County Line and 19 ch to the N line of out lot N° 21

Foot Note } Frie Pikes indicated by green ink Tp and Co roads in black ink, acres in each tract as surveyed marked in black ink
 Acres in green ink taken from the records. Original survey lines indicated by heavy lines in red ink distances in chains by actual measurement in black ink.

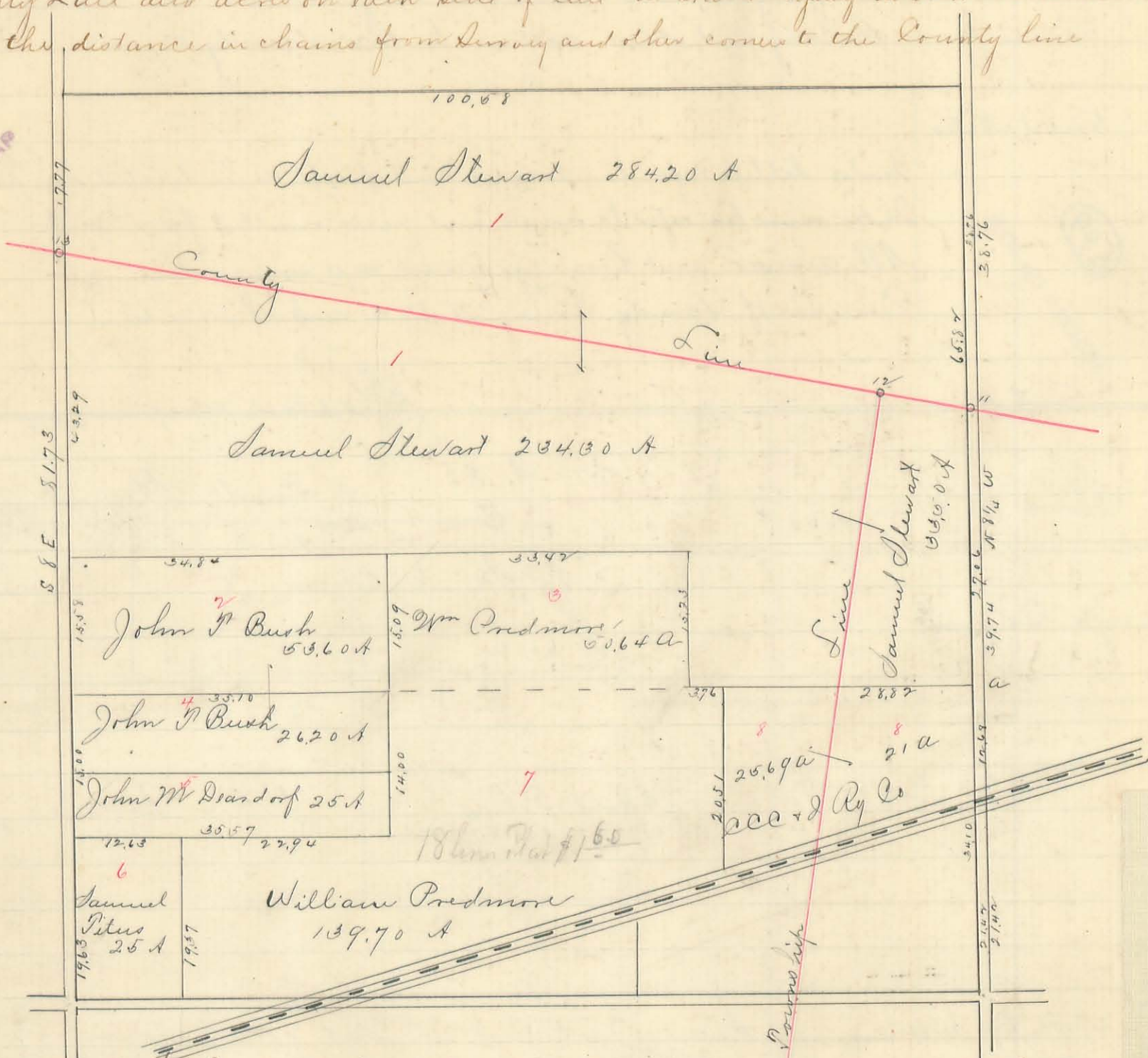
Scale 10 ch per inch Done in the year 1884-57.6
 by N H Colwell & Surveyor of Hardin Co
 J A Buchanan " " " Logan

191

Hardin and Logan County Line

Plat of Mil Sur N^o 9978 Original Proprietors, Porterfield and Taylor, Original Quantity 666²/₃ acres, and John Spottswood 333¹/₃ acres, showing location of County Line and acres on each side of line in tracts lying in both Counties together with the distance in chains from Survey and other corners to the County line

548
INDEXED ON MAP



Field Notes
 Index letters refer to corners and posts as indicated on plat
 Index numbers refer to owners and acres omitted from plat
 All courses and bearings given are magnetic
 Course of County Line N 87 W

- At Stake corner Survey and corner tracts 1 and 8
- " Burr Oak 14" S 62 1/2 W 177 1/2 links, also white hickory 12" S 68 1/2 E 90 3/4 links
- 11 See Survey 10789
- 12 Bena Stone monument on County line and at corner Boker creek and Bush of
- " planted in a pond, center of road and E line of survey S 87 E 9.77 ch, also ash
- " 24" N 9 1/2 E 68 links also swamp ash 18" S 88 1/4 W 46 1/2 links
- 13 Bena Stone monument planted 25 feet east of center public road on west line of survey

Foot Note
 Blue Pikes indicated by green ink. Township and County roads in black ink. acres in each tract as surveyed marked in black ink. acres in green ink taken from the records. Original survey lines indicated by heavy lines in black ink. distances in chains by actual measurements in black ink

Scale 15 chains per inch Done in the years 1854-57
 by N. H. Colwell Esq. Hardin Co
 J. A. Buchanan " Logan

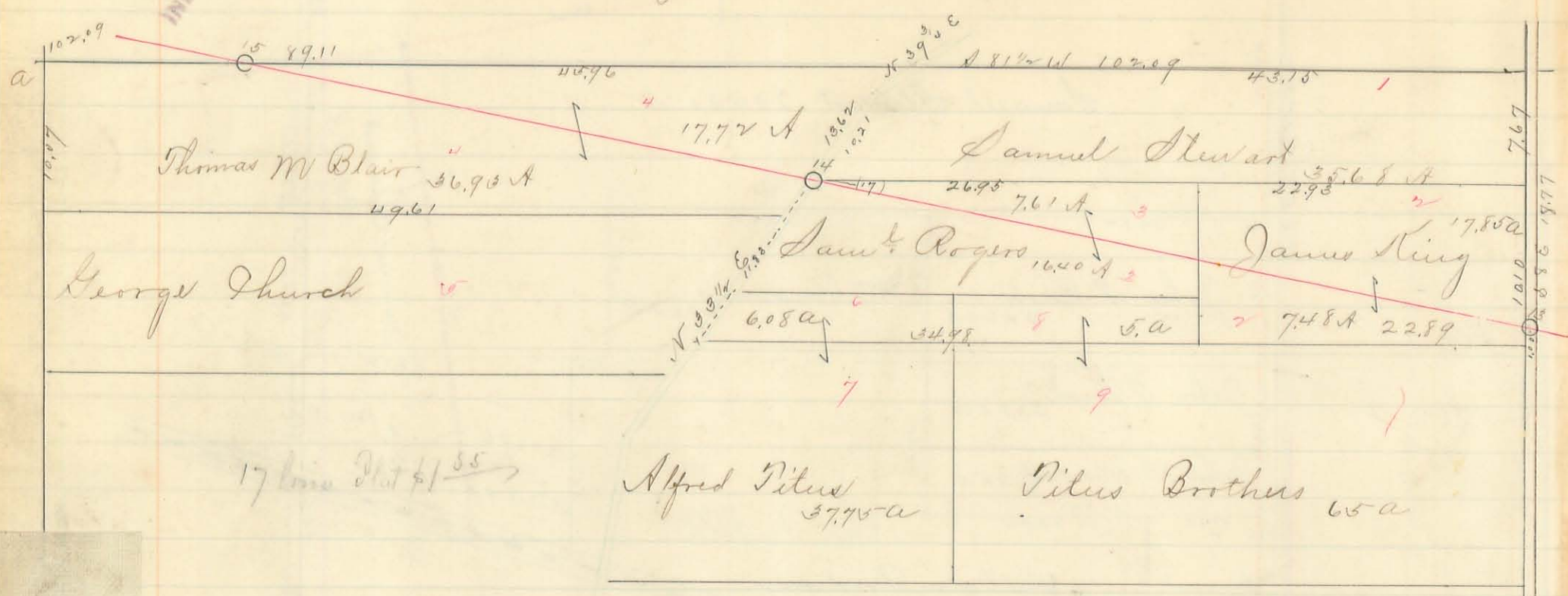
Hardin and Logan County Line

Plat of Mil Sur N^o 9977 Original Proprietor Robt Means Original quantity 1000 acres. Showing location of County Line and acres on each side of line in tracts lying in both Counties. together with the distances in chains from Survey and other corners to the County Line

Field Notes

Index letters refer to corners and posts as indicated on plat
Index number refer to acres and acres omitted from plat
All courses and bearings given are magnetic
Course of County Line N 87 W and N 87 1/2 W

549
INDEXED ON MAP



- a Stake NW corner of Survey Jack Oak 16" N 4 E 18 1/3 links
- " Also Beech 16" S 70 1/2 E 64 1/2 links also ash stump 20" S 39 1/2 E 38 3/4 links
- o 12 See Survey 9978
- o 14 Bena Stone monument at angle in County line and 11 feet west of centre of gravel on pike, at this point the County line deflects to the south 14' 16" (14 minutes and 16 seconds computed) thence a straight line to the SW corner of Hardin Co in Survey N^o 12276
- "
- o 15 Bena stone monument on County line and N line of survey. white Beech 5" N 8 W 57 1/2 links and white oak 8" S 72 1/2 E 30 1/2 links and S 81 1/2 W 12.98 chains to NW corner of Survey
- 6 Alfred Titus 6.08 acres
- 8 Titus Bros 5. "

Foot Note

Free Pikes indicated by green ink. Township and County roads in black ink. Acres in each tract as surveyed marked in black ink. Acres in green ink taken from records Original Survey lines indicated by heavy lines in black ink. Distances in chains by actual measurements black ink Done in the years 1884-5 & 6 by N H Colwell Co Sur Hardin Co J A Buchanan " " Logan "

(13)

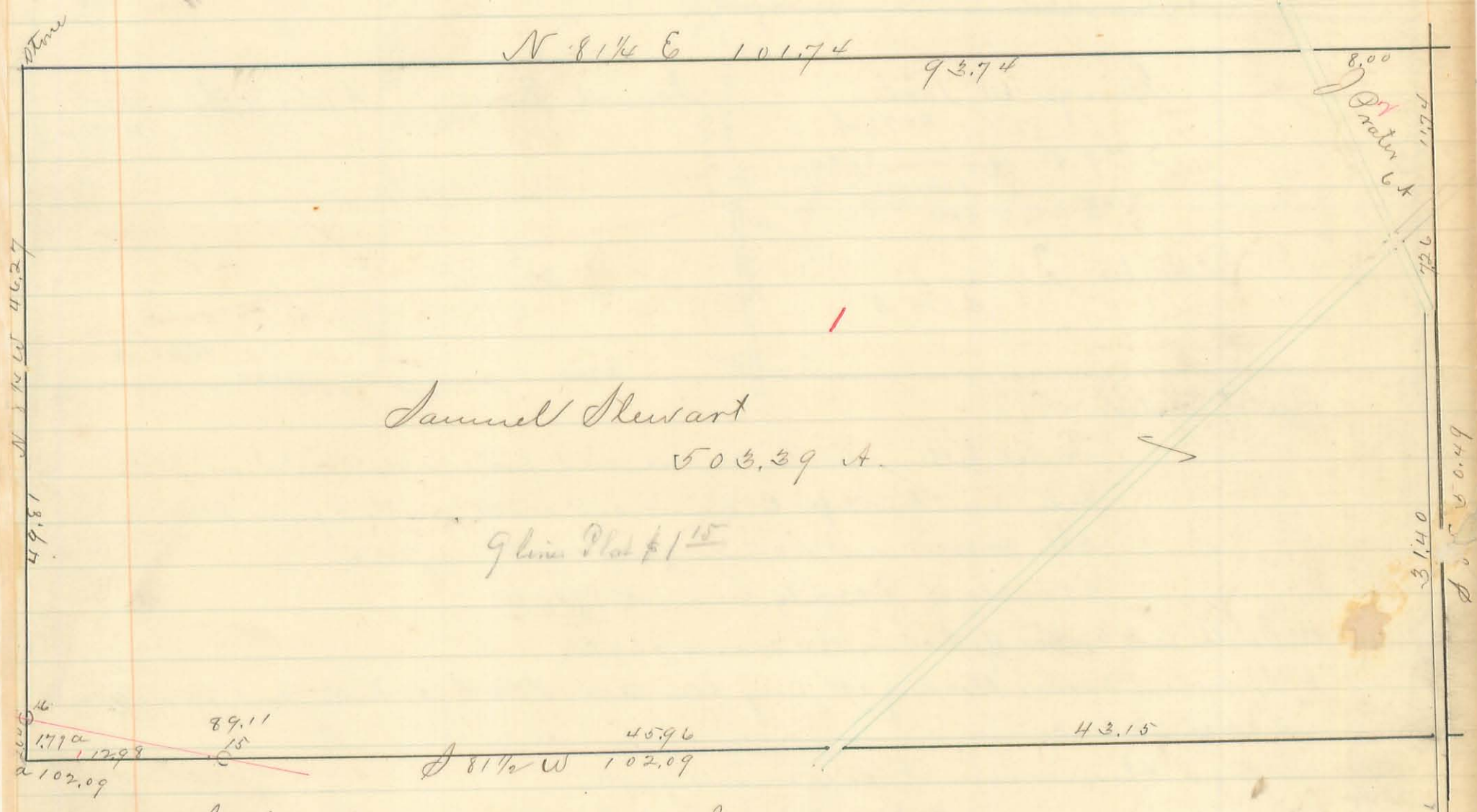
Hardin and Logan County Line

Plat of Mil Survey No 9993
Showing location of County line and acres on each side of line lying
in both Counties, together with the distances in chains from survey
and other corners to Co line

Field Notes } Index letters refer to corners and posts as indicated on plat
 } Index numbers refer to owners and acres omitted from plat
 } All courses and bearings given are magnetic
 } Course of County line $87\frac{1}{2}^{\circ} W$

550

INDEXED ON 212



- South West corner Survey see Survey 9977
- 15 see Survey 9977
- 16 Berea Stone monument on County line and west line of survey
- SW corner of survey $S 8\frac{1}{4} E 264$ links, also ash 28" $S 7\frac{1}{4} E 17$ links
- and Shel Hickory 10" $N 30\frac{1}{2} E 103$ links

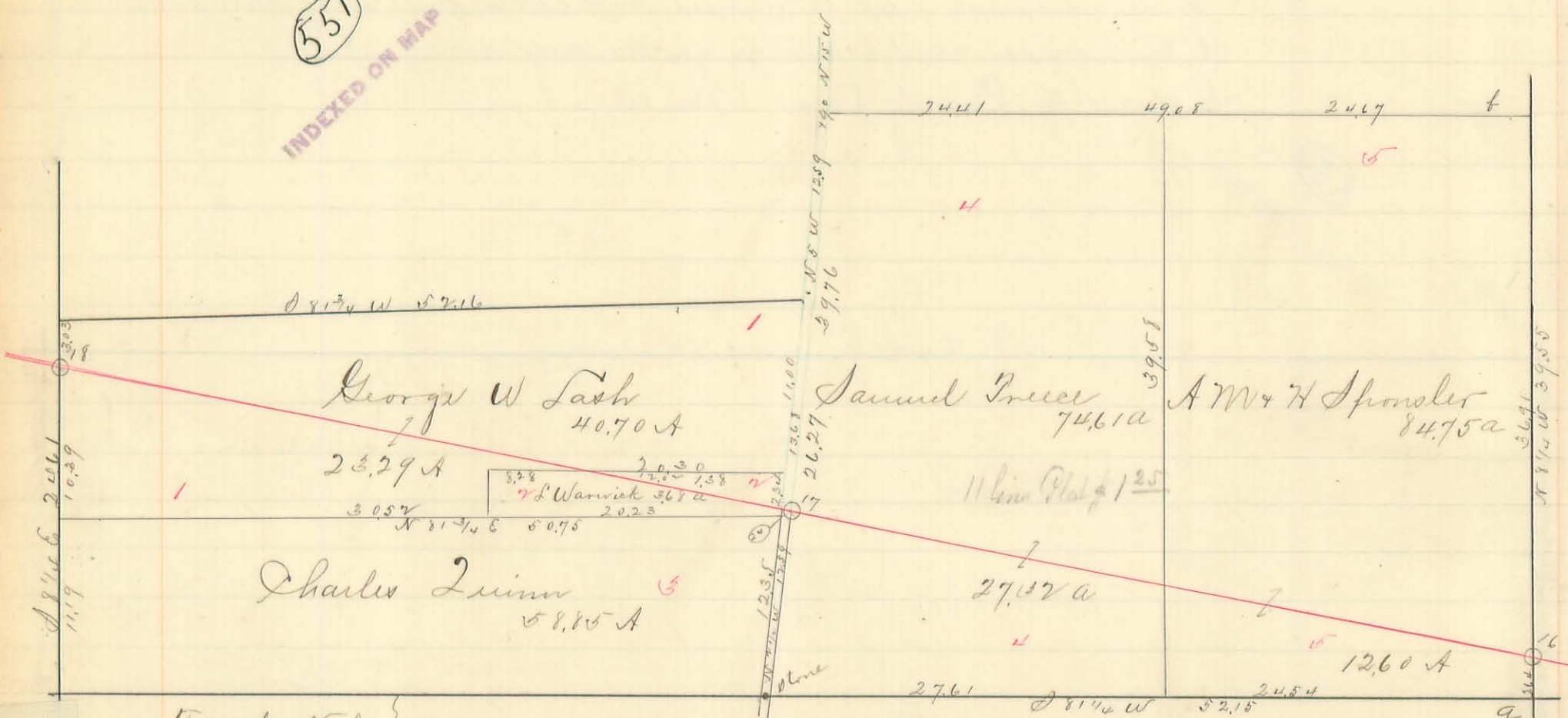
Foot Note } Free Pikes indicated by green ink Tp and County roads in black
 } ink. Acres in each tract as surveyed marked in black ink
 } acres in green ink taken from records Original survey lines
 } indicated by heavy lines in black ink, distances in chains by
 } actual measurements in black ink
 } Scale 10 chains per inch

Done in the years 1884-5 & 6 by
W H Colwell Co Sur Hardin Co
D A Buchanan " " Logan " "

Plat of Mil Sur No 9992

Showing location of County Line and acres on each side of line in tracts lying in both counties together with the distances in chains from survey and other corners to the County line

551
INDEXED ON MAP



Field Notes

Index letters refer to corners and posts as represented on plat
 Index numbers refer to owners and acres omitted from plat
 All courses and bearings given are magnetic
 Course of County line N 87° 1/2 W

- a South east corner of Survey/see survey 9990
- b Spouler corner Hickory 17" Orig bear tree S 70° E 28 links and swamp ash " S 85° W 23 links
- o 16 Bena Stone monument (see survey 9990)
- o 17 " " " placed 25 feet east of center of road
- o 18 " " " " on Survey line cleared land
- Lydia Warwick 5.06 acres Logan 3.68 Hardin 1.38

Foot Note

Free Pikes indicated in green ink. Township and County roads in black ink. Acres in each tract as surveyed marked in black ink. Acres in green ink taken from the records. Original survey lines indicated by heavy lines in black ink. Distances in chains by actual measurements in black ink.

Scale 10 chains per inch

Done in the years 1854-576 by
 N H Colwell Co Sur Hardin Co
 J A Buchanan " " Logan "

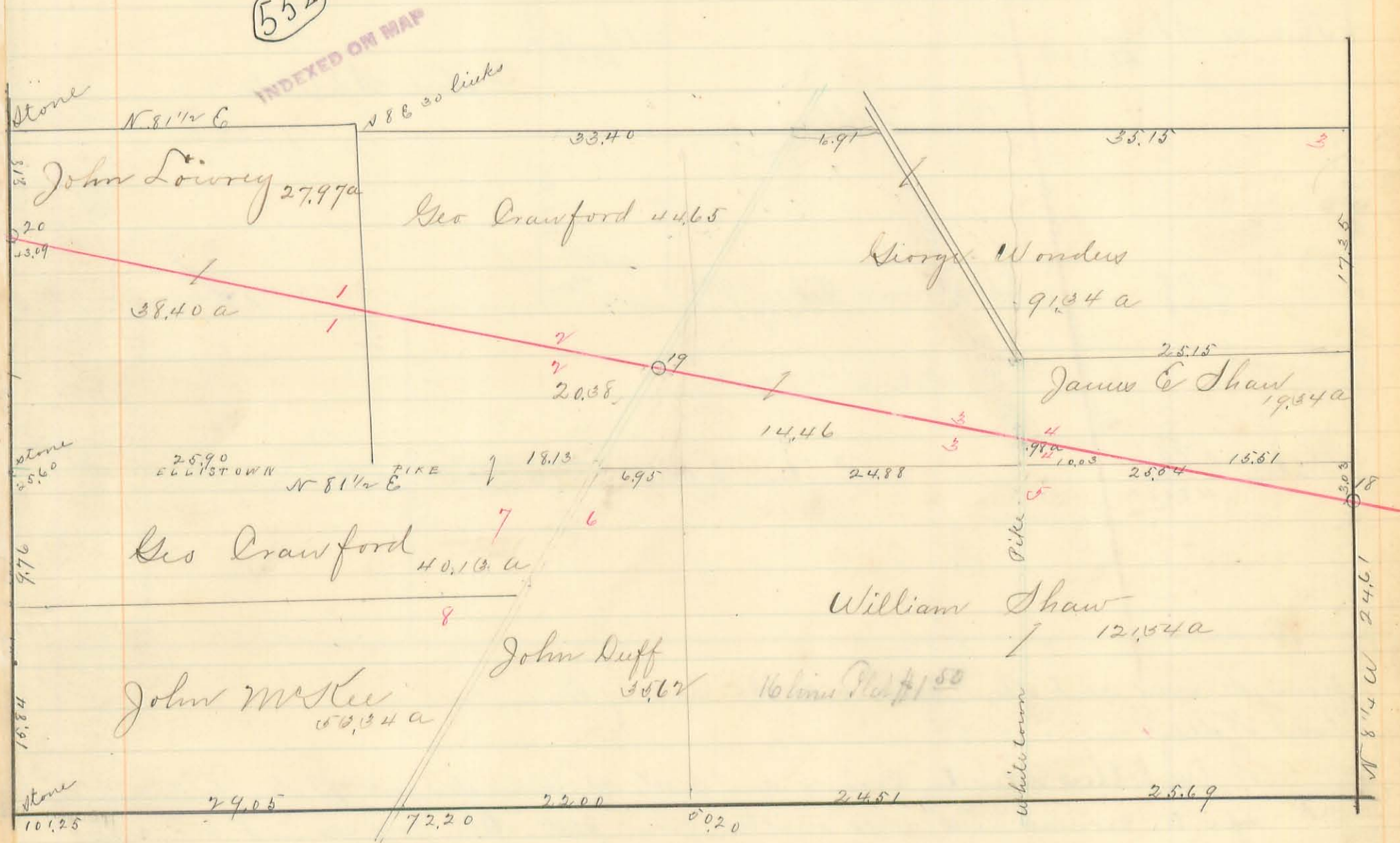
Plat of Mil Sur No 9991

showing location of County line and acres on each side of County line in tracts lying in both Counties, together with the distance in chains from survey and other corners to the County line

Field Notes

Index letters refer to corners and posts as indicated on the plat. Index numbers refer to owners and acres omitted from plat. All courses and bearings given are magnetic. Course of County line N 87 1/2 W

552



- 18 O Berea Stone monument see Survey 9992
- 19 O " " " 25 feet east of center of Pike
- 20 O " " " on west line of Survey

Three Pikes indicated by green ink. Townships and County roads in black ink. Acres in such tract as surveyed in black ink. Acres in green ink taken from records. Original Survey lines indicated by heavy lines in black ink. Distances in chains by actual measurements in black ink. Scale 10 chains per inch

Done in the year 1884-5 & 6 by
N H Colwell Co Sur Hardin Co
J A Buchanan " " Logan "

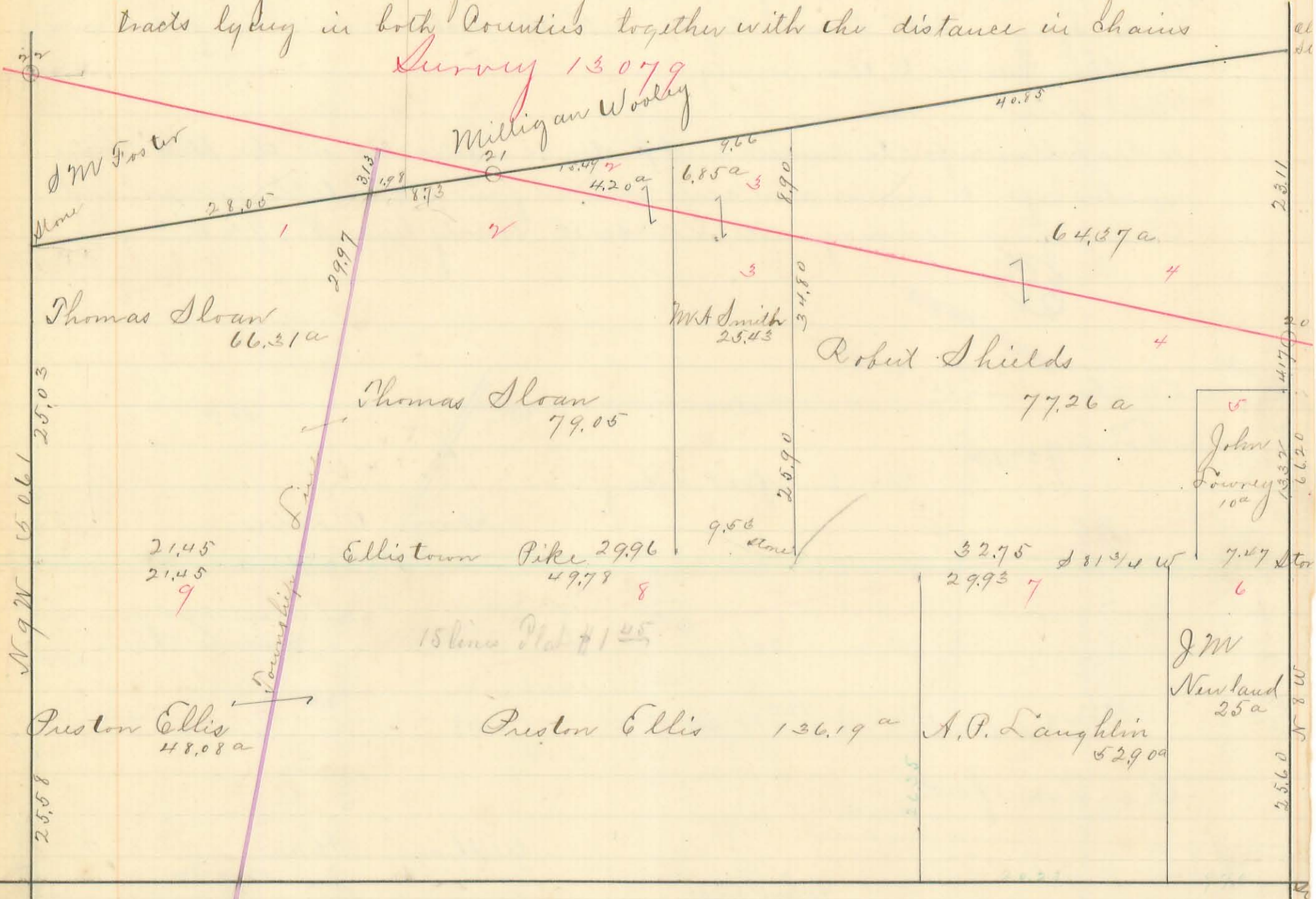
436 (553)

INDEXED ON MAP

Plat of Mid Survey N^o 10502

Showing location of County line and acres on each side of line in tracts lying in both Counties together with the distance in chains

Survey 13079



from survey and other corners to the County line
Field Notes

Index letters refer to corners and points as indicated on plat. Index number refer to corners and acres omitted from plat. All courses and bearings given are magnetic. Course of County Line N 86 1/2 W

- 20 ○ Berea stone monument on survey line
- 21 ○ " " " " " "

Free Pikes indicated by green ink. Township and County roads in black ink. acres in each tract as surveyed marked in black ink. acres in green ink taken from records. Original Survey lines indicated by heavy lines in black ink

Scale 10 chains per inch

Done in the years 1884-576 by
N H Colwell Co Sur Hardin Co
J A Buchanan " " Logan "

554

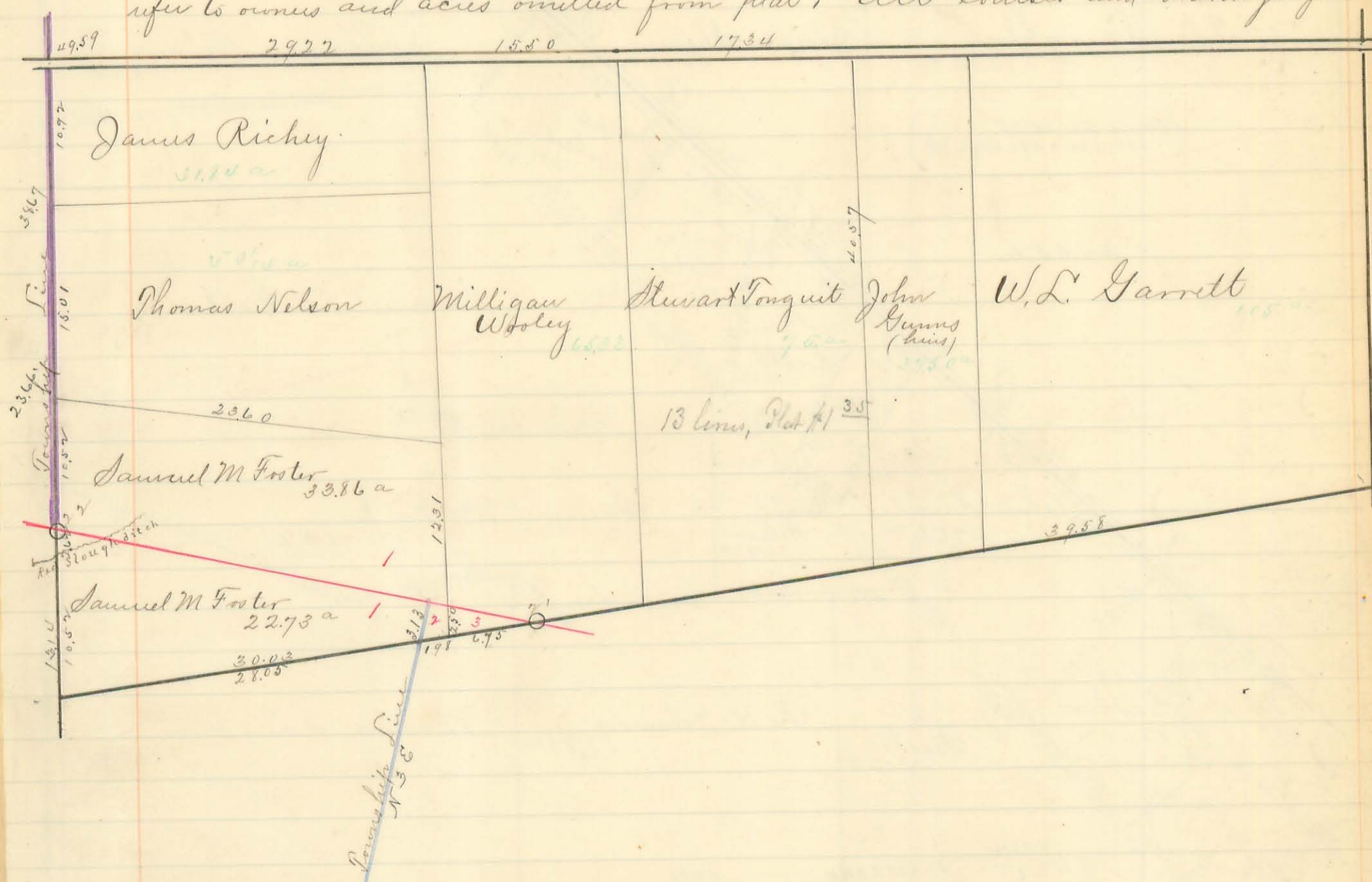
INDEXED ON MAP

Plat of Mil Survey N^o 13079

Showing location of County line and acres on each side of line in tracts lying in both townships, together with the distances in chains from survey and other corners to County line

Field Notes

Index letters refer to corners and posts as indicated on plat. Index numbers refer to corners and acres omitted from plat. All courses and bearings given



are magnetic
Course of County Line N 86³/₄ W

- 21 O Bera Stone monument on Survey line
- 22 O " " " " " " corner to
- " Taylor creek and McDonald Townships

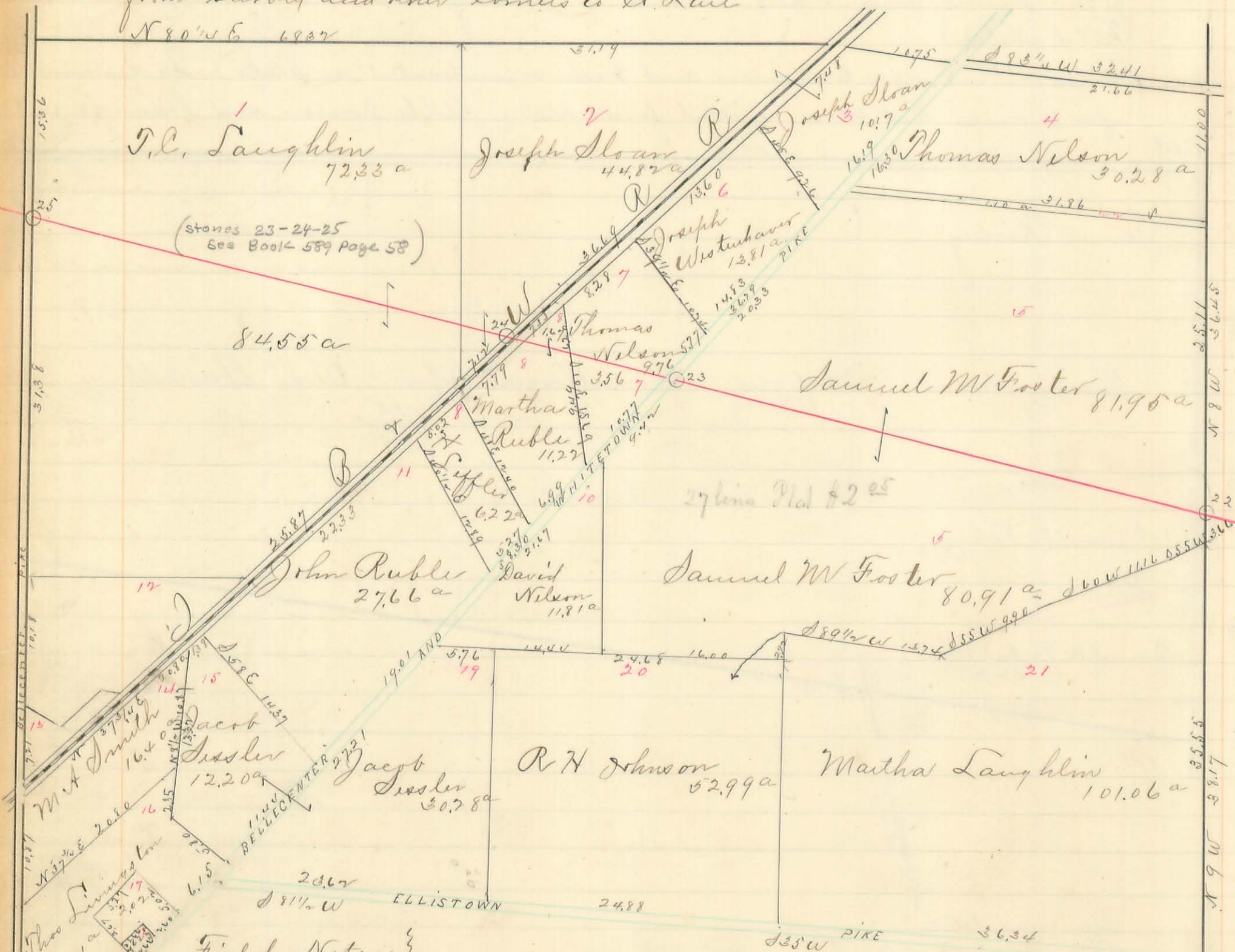
Free Pikes indicated by green ink. Township and County roads in black ink. acres in each tract as surveyed marked in black ink. Acres in green ink taken from records. Original Survey lines indicated by black ink lines. distances in chains by actual measurements in black ink. Scale 10 chains per inch

Done in the years 1884-5-76 by
N.H. Colwell Co Sur Hardin Co O
J.A. Buchanan " " Logan " "

653

(24)

Plat of Mil Survey No 14032
 Showing location of County Line and acres on each side of County
 Line, in tracts lying in both Counties together with the distances in chains
 from Survey and other corners to Co. Line



Field Notes

- Index letters refer to corners and posts as indicated on plat. Index numbers refer to owners and acres omitted from the plat. All courses and bearings given are magnetic. Course of County line N 87 W
- 27 Berea stone monument on Survey line
 - 20 " " " 25 feet east of centre of
" Belle Centre Pike
 - 24 Berea Stone monument on west side right of way I B & W Ry
 - 25 Berea Stone monument 25 feet east of centre of Pike
" and Survey line Burr Oak 20" N 20 1/2 E 50 1/2 links

Done in the years 1884-5 & 6 by
 N. H. Colwell Co Sur Hardin Co
 J. A. Buchanan. Logan

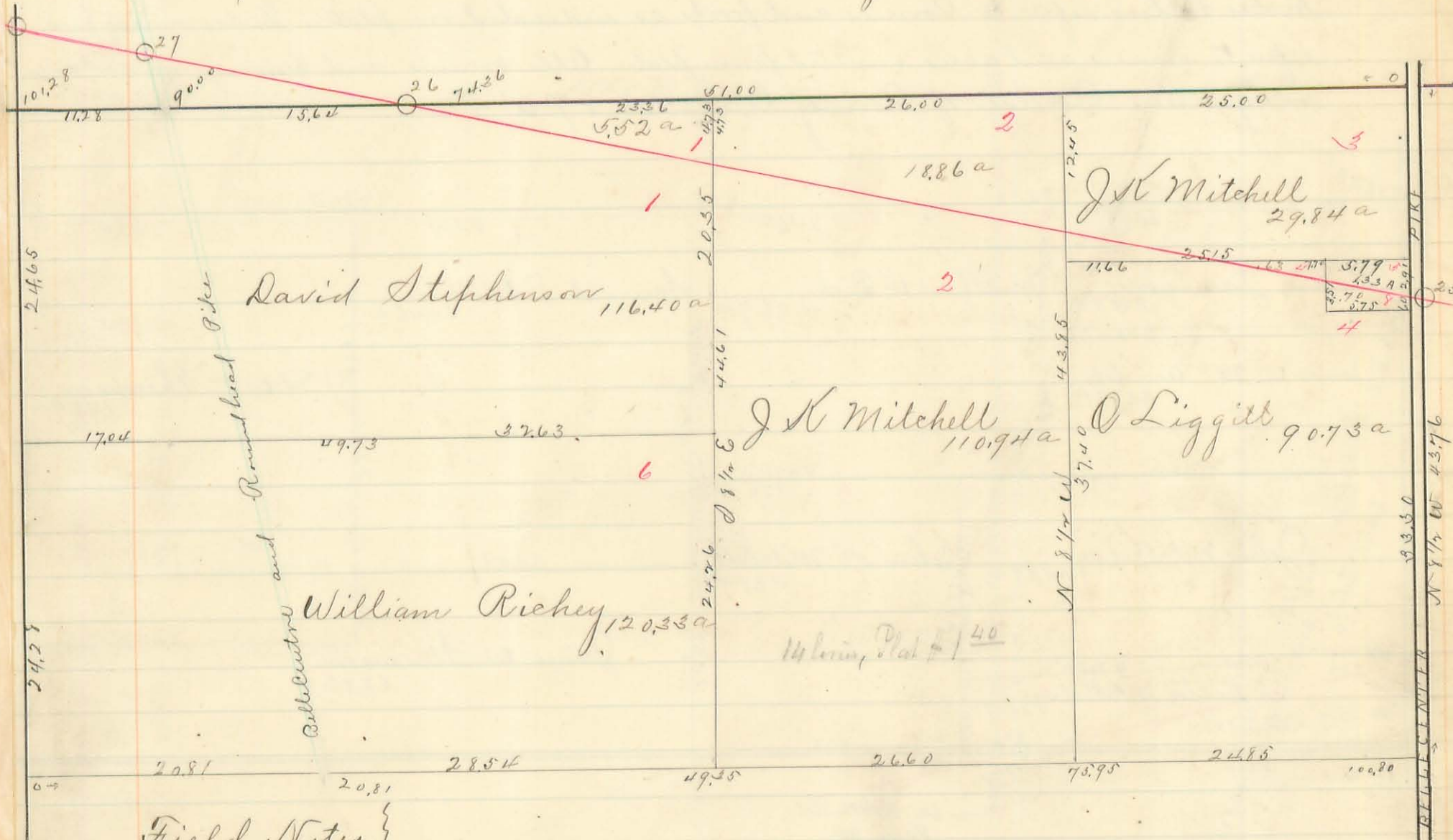
556

(25)

INDEX MAP

Plat of Mil Survey No 9989

Original proprietor Thos Coverton Original quantity 1000 acres showing location of County line and acres on each side of line in tracts lying in both Counties, together with the distances in chains from survey and other corners to the County line



Field Notes

Index letters refer to corners and posts as indicated on plat. Index numbers refer to owners and acres omitted from plat. All courses and bearings given are magnetic. Course of County line N 87° W
 O 25 Berea Stone monument see Survey 14062
 O 26 Berea Stone monument on Survey line
 5

Free Pikes indicated by green ink. Township and County roads in black ink. Acres in each tract as surveyed marked in black ink. Acres in green ink taken from the records. Original Survey lines indicated by heavy lines in black ink. Distances in chains by actual measurements in black ink.

Scale 10 chains per inch

Done in the year 1884-5 & 6 by
 N. H. Colwell Esq Surveyor Hardin Co
 J. A. Buchanan " Logan "

557

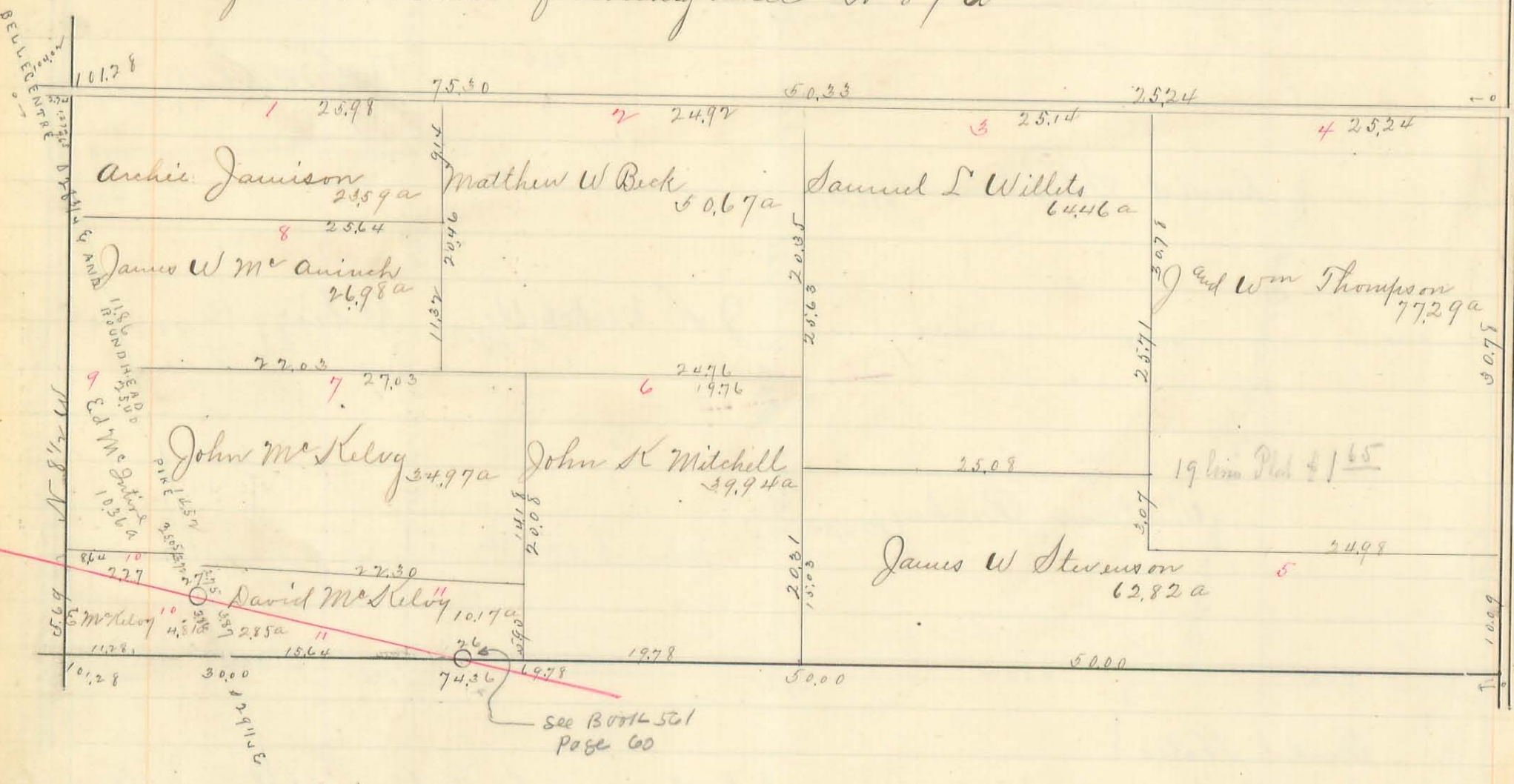
INDEXED ON MAP

Plat of Mil Survey, N^o 12181

Showing location of County line and acres on each side of line in tracts lying in both Counties, together with the distances in chains from survey and other corners to County line

Field Notes

Index letters refer to Corners and posts as indicated on plat, Index numbers refer to owners and acres omitted from plat. All courses and bearings given are magnetic. Course of County line N 87 W



- 26 Bera Stone monument on South line of Survey
- 27 " " " 25 feet west of center of Pike

Free Pikes indicated by green ink. Township and County roads in black ink. Acres in each tract as surveyed marked in black ink. Acres in green ink taken from records. Original Survey lines indicated by heavy lines in black ink. Distances in chains by actual measurements in black ink. Scale 10 chains per inch

560

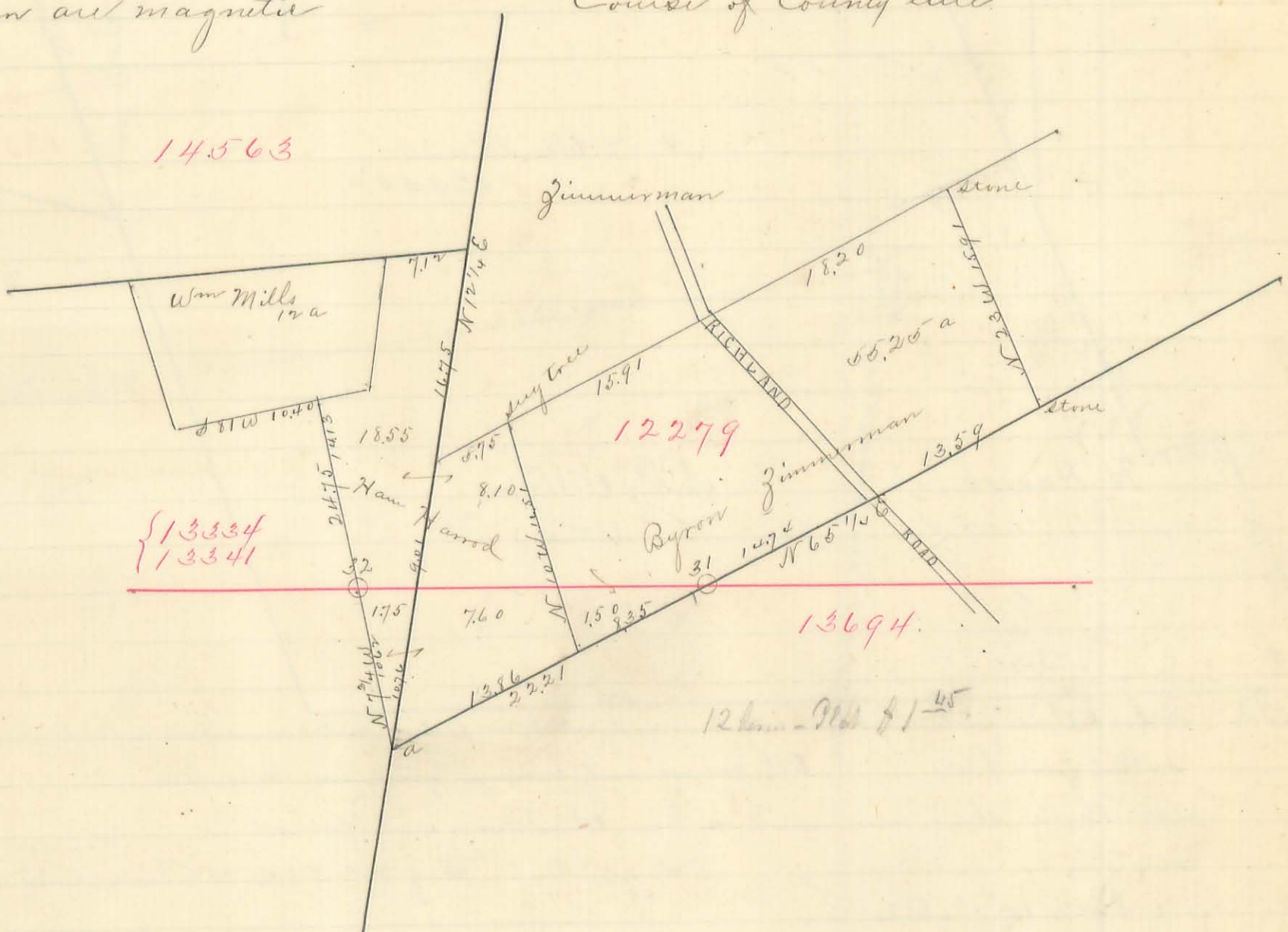
INDEXED ON MAP

(33)

Plat of Mil Survey 12279

Original Proprietor George Lambert Original quantity 450 acres showing location of County line and acres on each side of line in tracts lying in both Counties. together with the distances in chains from survey and other corners to the County line

Field Notes
 Index letters refer to corners and posts as indicated on plat Index numbers refer to owners and acres omitted from plat. All courses and bearings given are magnetic
 Course of County line.



- 31 See Survey 13694
- 32 Berea stone monument on line Windham and Harrod
- a Survey corner see Survey 13694

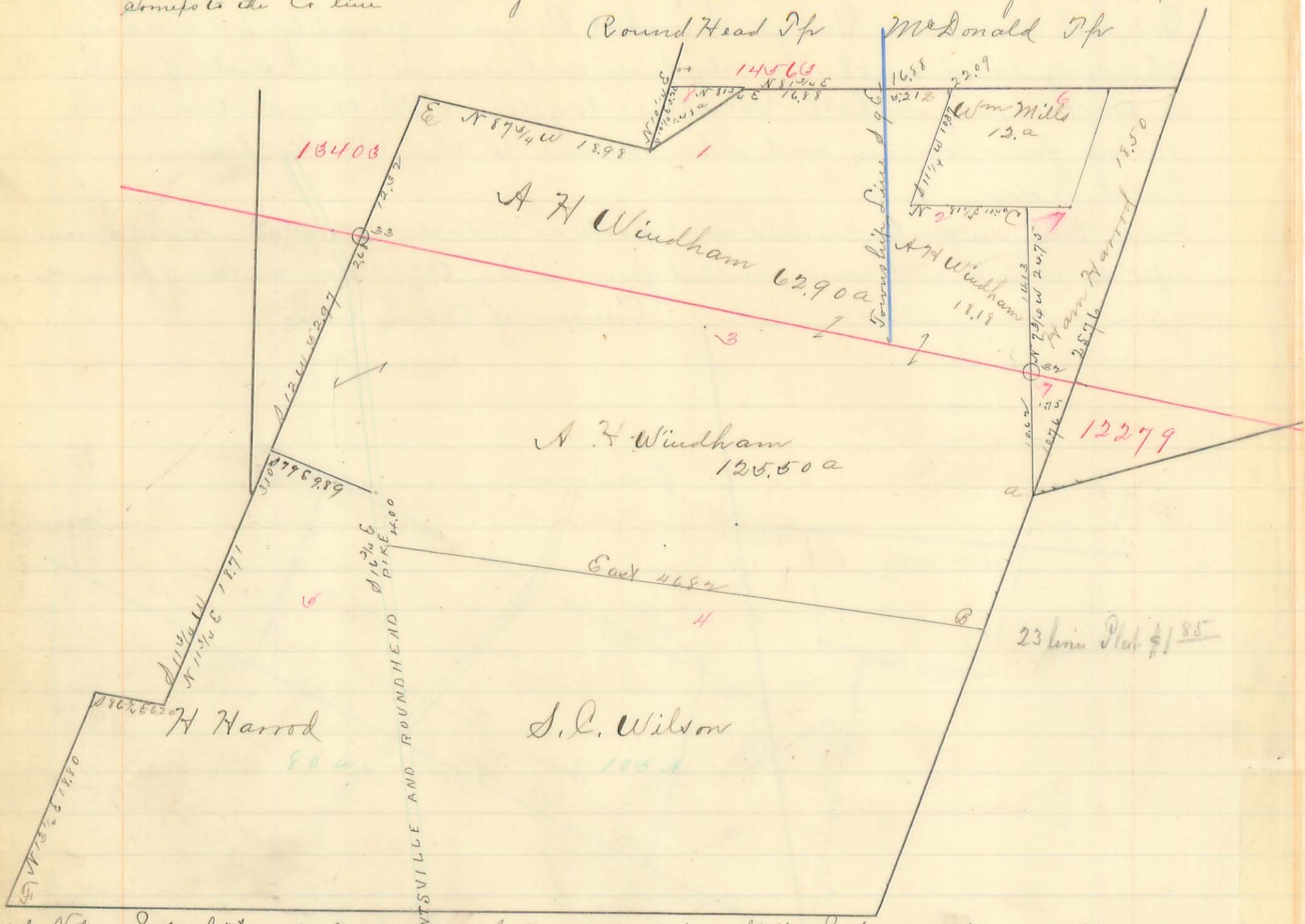
Free Pikes indicated by green ink. Township and County roads in black ink. Acres in each tract as surveyed in black ink. Acres in green ink from records. Original Survey lines indicated by heavy lines in black ink. Distances in chains by actual measurements in black ink
 Scale 10 chains per inch

Done in the year 1884-5 & 6 by
 N H Polwell Esq Sur Hardin Co O
 J A Buchanan " Logan "

56

Flat of Mil Survey No 13334 13341

Showing location of County Line and acres on each side of line in tracts lying in both Counties, together with the distances in chains from survey and other points to the Co line



Field Notes Index letters refer to corners and posts as indicated on plat. Index numbers refer to corners and acres omitted from plat. All courses and bearings given are magnetic

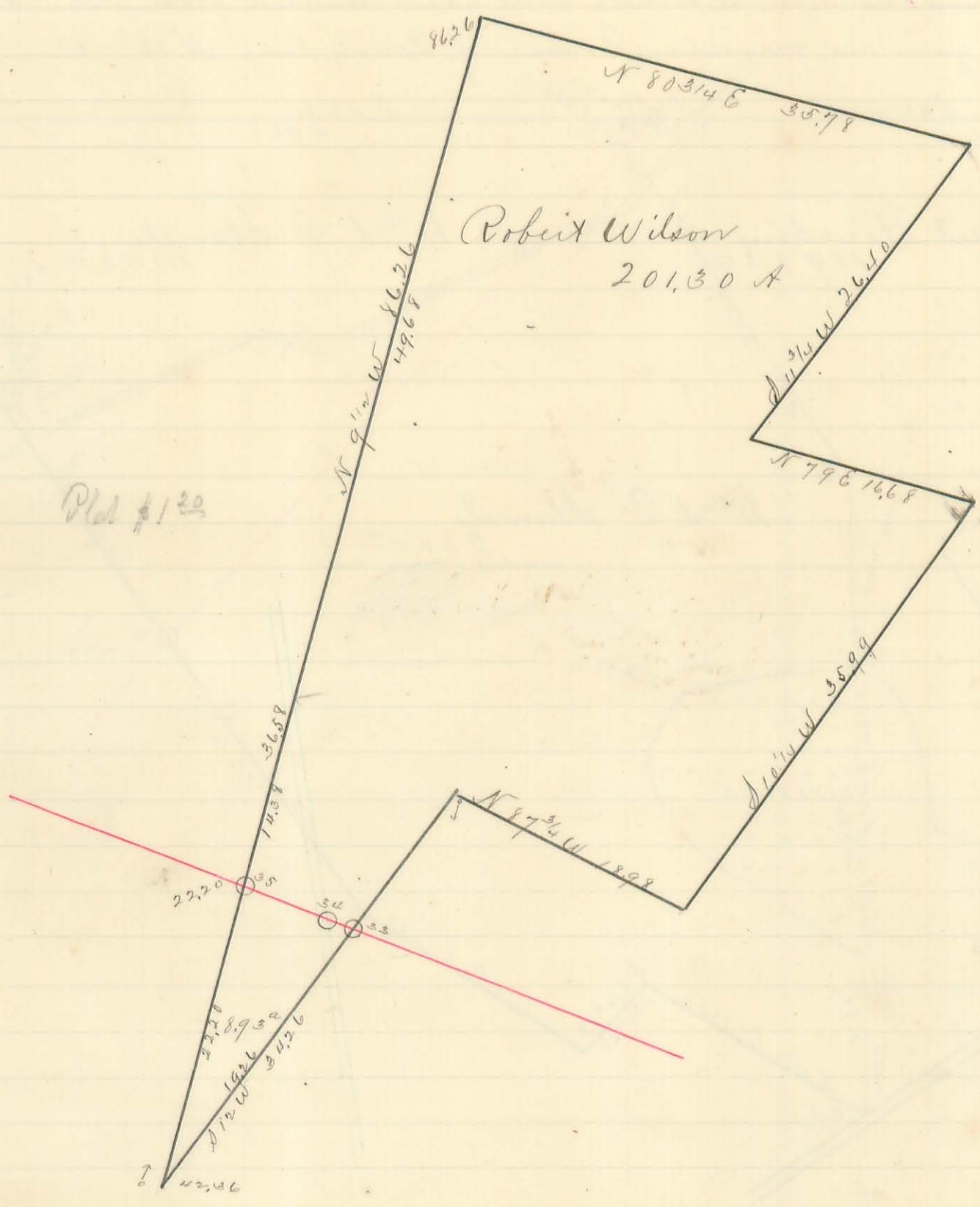
- 37 Berea Stone monument on line Windham and Harrod
- 33 Survey line, Sug 28" N 6 W 18 3/4 links and red elm 30"
- S 45 1/4 W 9 3/4 links
- A W corner Survey 12279, see Survey 13694
- B Corner 3 and 4 Sugar (old bearing tree) 11" N 44 1/2 E 10 1/4 links
- " and Sugar (old BT) S 44 1/2 W 10 1/4 links
- C Corner 2 and 7 Sugar 24" N 75 E 6 links
- D Corner 2 and 6 Ash 24" N 51 1/2 E 7 links (Feb 24 1886)
- E Corner Survey Burr Oak (down old bearing tree) 48" N 74 W 6 1/4 links
- " Beech 22" (old bearing tree) S 74 E 6 1/4 links and Elm 22 inches N 2 3/4 E 11 3/4 links
- F S W corner survey, Ash 22 inches, dead, old bearing tree N 48 1/4 E 13 links and
- " maple 28" down old bearing tree S 41 1/2 W 11 links, and ash 20" down old bearing
- " tree N 20 E 5 links and Elm 20" new bearing tree N 42 1/2 W 29 links and elm
- " 28" new bearing tree N 4 E 38 links

Free Pikes indicated by green ink. Township and County roads in black ink, acres in each tract as surveyed marked in black ink, acres in green ink taken from records. Original survey lines indicated by heavy lines in black ink. Distances in chains by actual measurements in black ink. Scale 10 chains per inch

Done in the year 1884-5-76 by
N H Dollwell Co Sur Hardin Co
J. A. Buchanan " " Logan

562

Plat of Mil Survey N^o 13403
Showing location of County line and acres on each side of line in tracts
lying in both Counties, together with the distances in chains from
survey and other corners to the County line



Field Notes

Inde letters refer to corners and posts as indicated on plat
 Inde numbers refer to owners and acres omitted from plat
 All courses and bearings given are magnetic
 Course of County line N 87 W
 O33 Berea Stone monument see Survey 13324
 O34 " " " East side of Roundhead Pike
 O35 " " " on Survey line

Free Pikes indicated by green ink, Township and County roads in
 black ink. Acres in each tract as surveyed marked in black ink
 Acres in green ink taken from records. Original Survey lines
 indicated by heavy lines in black ink. Distances in chains by
 actual measurements in black ink.

Scale 10 chains per inch

Done in the years 1884-5 & 6 by
 N. H. Colwell Co Sur Hardin Co O
 J. A. Buchanan " " Logan "

563

(40)

Plat of Mil Survey N^o 13396

Showing location of County line and acres on each side of line in tracts lying in both Counties together with the distances in chains from survey and other corners to the County line

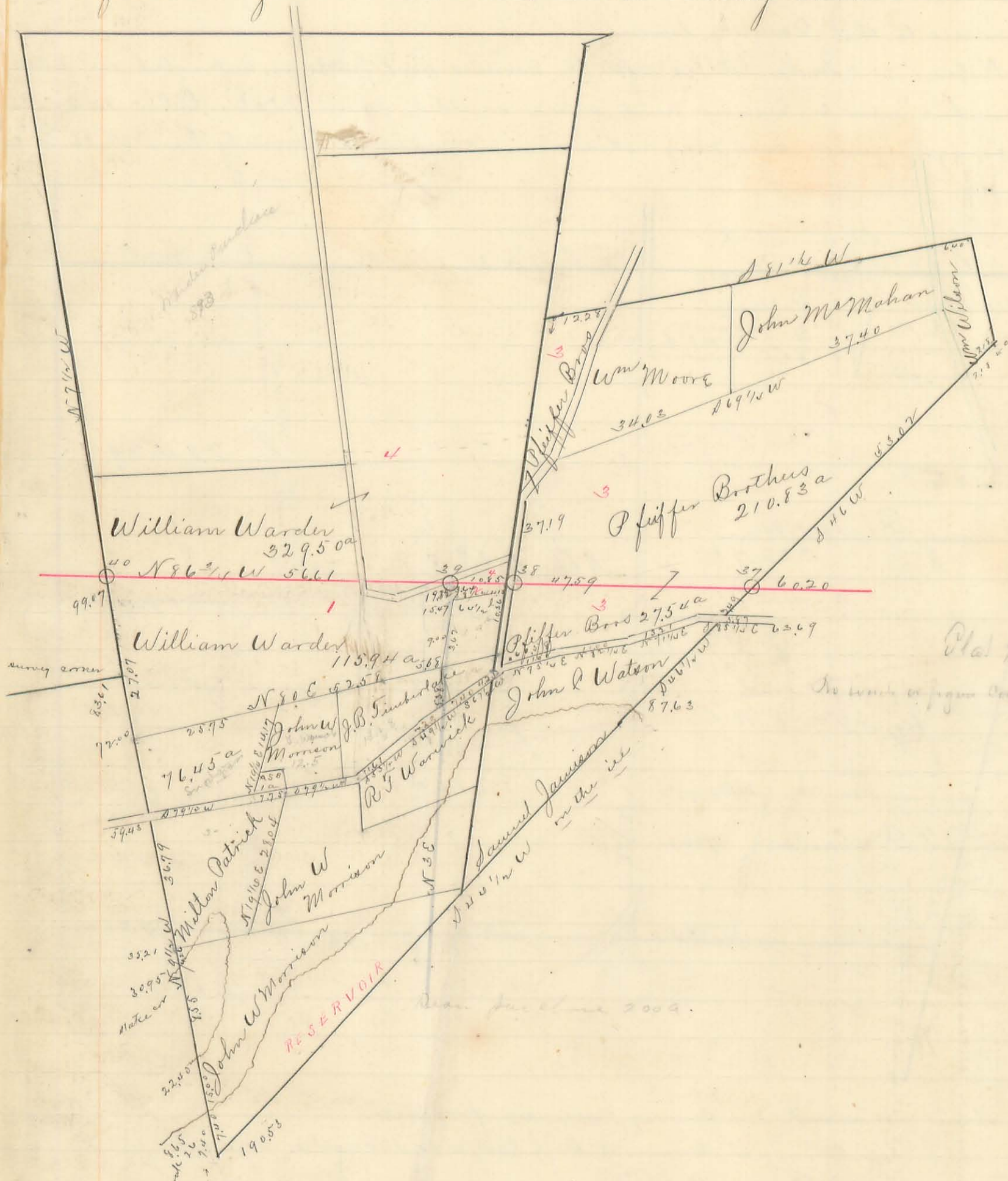
Field Notes { Index letters refer to corners and posts as indicated on plat
Index numbers refer to owners and acres omitted from plat. All courses and bearings given are magnetic. Course of County line N 86³/₄ W



- 35 O Bira Stone monument on survey line
- 36 O " " " south side Stamats road
- 37 O " " " Survey line
- A Corner Survey see F in Survey 13334
- B Beech 24" corner trees down. 13341
- C Elm 18" corner tree
- D Survey Corner Original trees gone Ash 6" N 66¹/₄ E 4³/₄ links
, and Elm 14" S 19¹/₂ E 8¹/₂ links
- E Survey Corner Original trees gone. Ash 6" corner tree

Tree Pikes indicated by green ink. Township and County roads in black ink. Acres in each tract as surveyed marked in black ink. Acres in green ink taken from records. Original Survey lines indicated by heavy lines in black ink. Distances in chains by actual measurements in black ink. N H Colwell Es Sur Hardin Co
Scale 10 chains per inch J. A. Buchanan. Logan

Plat of Mil Survey N^o 12277
 showing location of County line and acres on each side of line
 in tracts lying in both Counties together with the distances in chains
 from survey and other corners to the County line



Plat #250

No work or figure omitted

Field Notes

Index letters refer to corners and pools as indicated on plat Index numbers refer to corners and acres omitted from plat. All courses and bearings given are magnetic. Course of County line N 86³/₄ W.
 037 Berea stone monument on survey line.
 040 " " " " " in prairie
 039 " " " corner of Richland and Stokes Tps
 038 " " " 25 feet east of survey line and center of road
 " " red oak 12" N 81¹/₂ W 43¹/₂ links and Cherry 10" S 48³/₄ E 14¹/₂ links
 " " and red oak 14" N 56 E 23 links. Five pipes indicated by green ink
 Pf and Co roads by black ink. Acres in tracts as surveyed marked in black ink. Acres in green ink Taken from records. Original survey lines indicated by heavy lines in black ink. Distances in chains by actual measurements in black ink. Scale 20 chains per inch

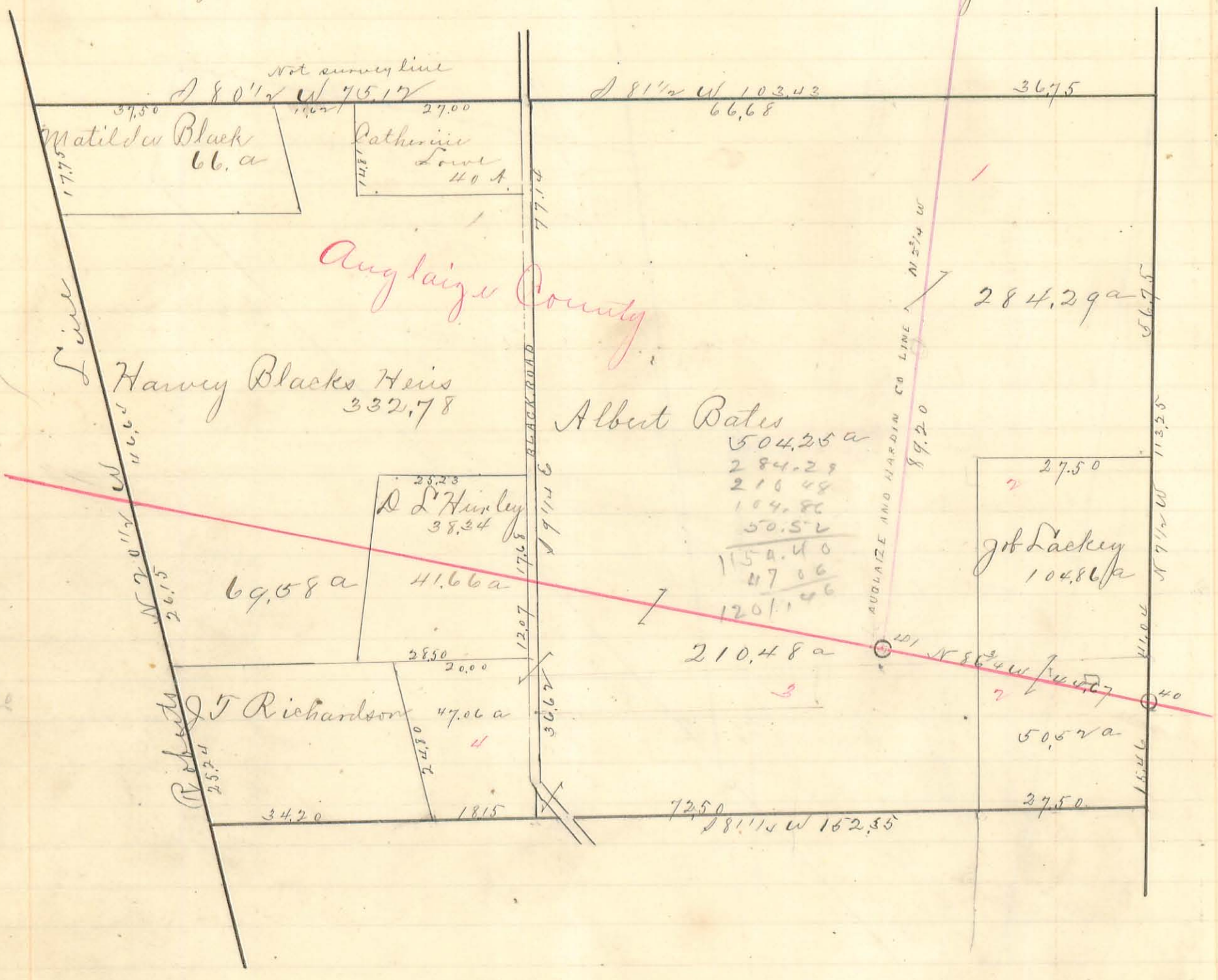
565

LAST

Plat of Mil Survey N^o 12276

Original proprietor W Pierce. Original quantity 2666²/₃ acres showing location of County line and acres on each side of line in tracts lying in both counties, together with the distances in chains from survey and other corners to the County line

Field Notes. Index letters refer to corners and posts as indicated on plat. Index numbers refer to owners and acres omitted from plat. All courses and bearings given are magnetic. Course of County line N 86³/₄ W



- 40 O Bena stone monument on survey line in prairie
- 41 O " " " at corner of Any laige and Hardin Counties
- " and at angle in Logan Co Line

Five Pikes indicated by green ink. Township and County roads in black ink. Acres in each tract as surveyed marked in black ink. Acres in green ink, taken from records. Original survey lines indicated by heavy lines in black ink. Distances in chains by actual measurements in black ink. Scale 20 chains per inch.

Done in the years 1884-5-6 by
 N. H. Colwell Co Sur Hardin Co O
 J. A. Buchanan " " Logan " "

67
 105
 661450
 412
 157
 18
 2200
 2750
 2250
 15000
 400
 246

The original of this page is blank or missing.

The original of this page is blank or missing.