

The original of this page is blank or missing.

The original of this page is blank or missing.

The original of this page is blank or missing.

The original of this page is blank or missing.

111

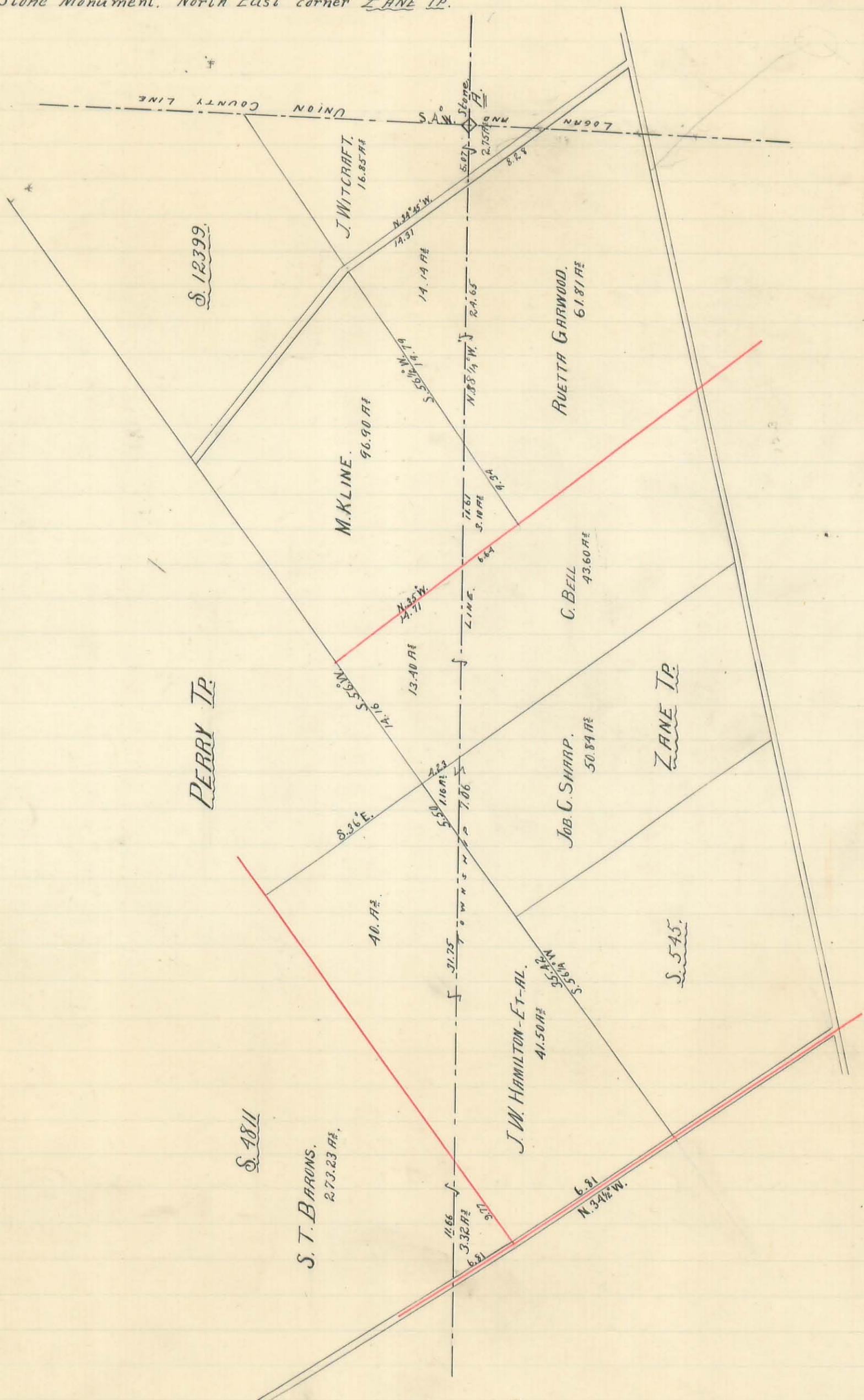
ZANE AND PERRY TOWNSHIP LINE.

PLAT OF PART OF VIRGINIA MILITARY SURVEYS NOS 545, 4811 AND 12399,

SHOWING THE LOCATION OF SAID LINE AND THE NUMBER OF ACRES IN EACH TOWNSHIP, OF THE FARMS INTERSECTED BY SAID LINE.

□ Stone Monument, North East corner ZANE TP.

527
INDEXED ON MAP



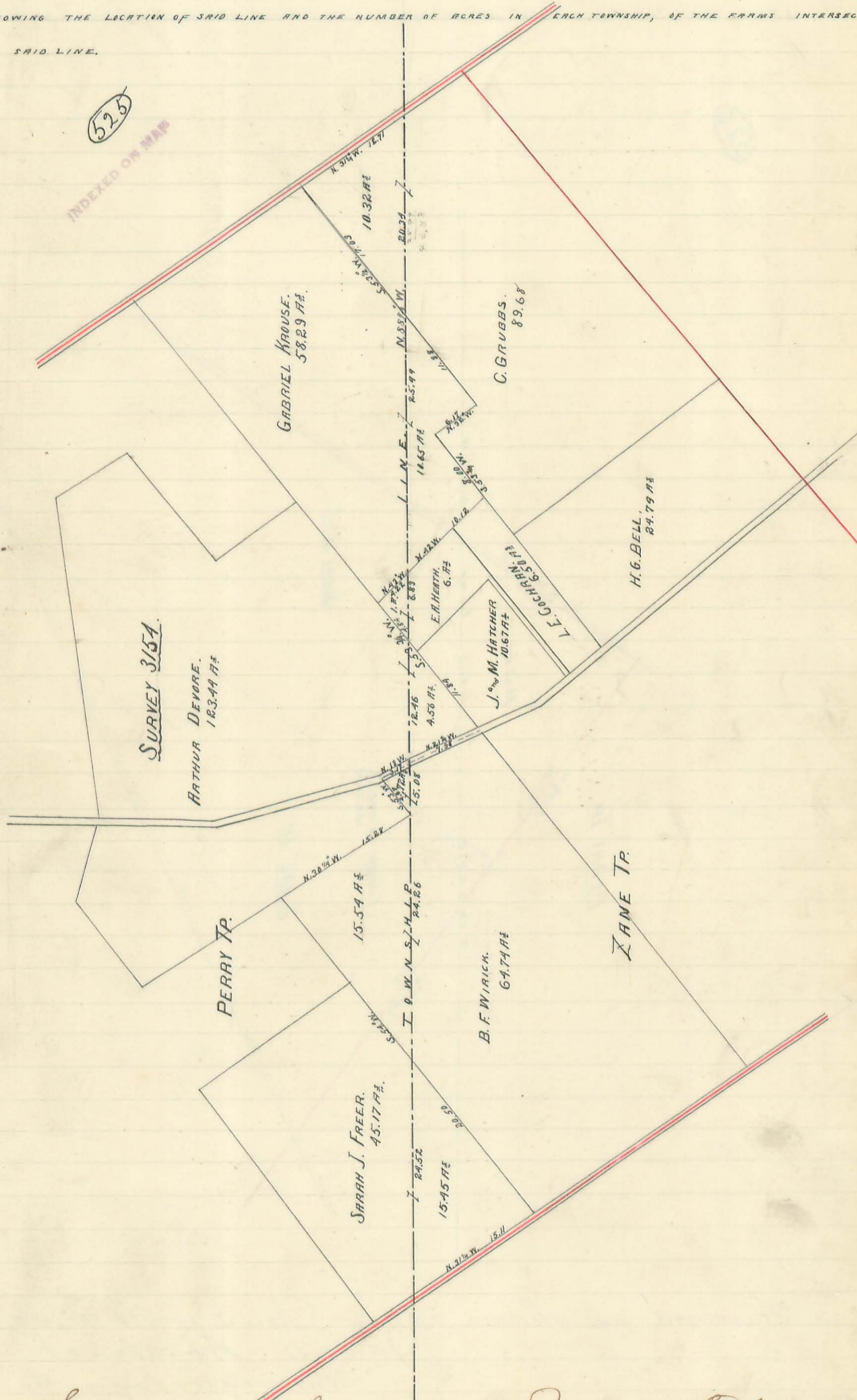
Surveyed as shown above Jan 27 - Feb. 20, 1891
 James C. Hodrus
 Surveyor Logan County

40 miles 150 rods

ZANE ^{AND} PERRY TOWNSHIP LINE.

PLAT OF PART OF VIRGINIA MILITARY SURVEY N^o 3154.

SHOWING THE LOCATION OF SAID LINE AND THE NUMBER OF ACRES IN EACH TOWNSHIP, OF THE FARMS INTERSECTED BY SAID LINE.



Surveyed as shown above Jan 27. - Feb. 20 1891
 James C. Hondius
 Surveyor Logan Co.

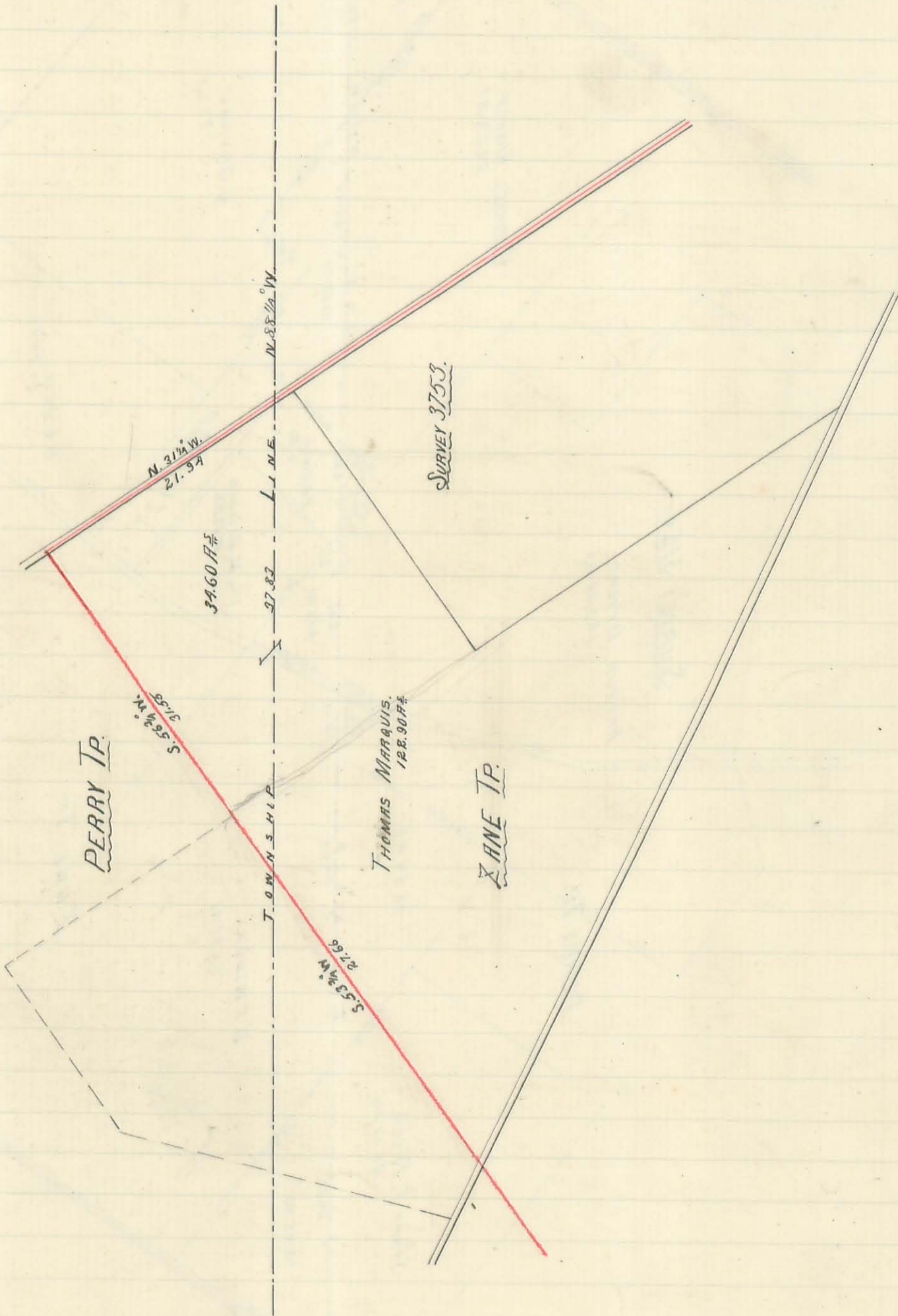
12 lines, 75 miles,

ZANE AND PERRY TOWNSHIP LINE.

PLAT OF PART OF VIRGINIA MILITARY SURVEY No. 3753.

SHOWING THE LOCATION OF SAID LINE AND THE NUMBER OF ACRES IN EACH TOWNSHIP, OF THE FARMS INTERSECTED BY SAID LINE.

526



Surveyed as shown above Jan 27 - Feb. 20, 1891.
 Jas. C. Hondrus
 Surveyor Logan Co.

25 lines 150 wide

111

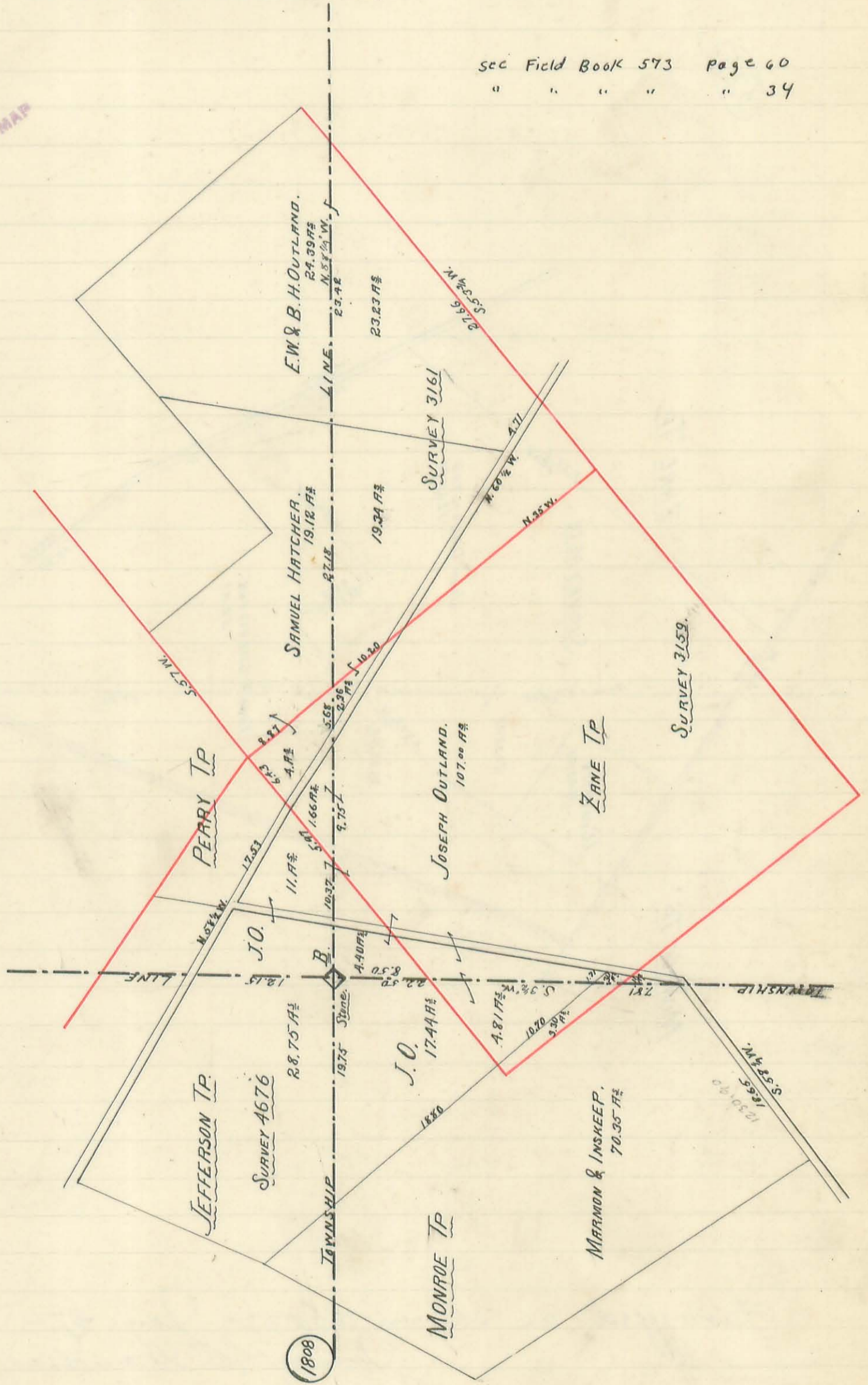
ZANE, PERRY & MONROE TOWNSHIP LINES.

PLAT OF PART OF VIRGINIA MILITARY SURVEYS N^{os} 4676 & 3116, AND OF SURVEY N^o 3159 ENTIRE.
SHOWING THE LOCATION OF SAID LINES AND THE NUMBER OF ACRES IN EACH TOWNSHIP, OF THE FARMS
INTERSECTED BY SAID LINE.

B. Stone monument North West corner ZANE TP

sec Field Book 573 page 60
" " " " " 34

627
INDEXED ON MAP



Surveyed as shown above Jan 27 Feb 20, 1891
James C. Hodne
Surveyor Logan Co O.

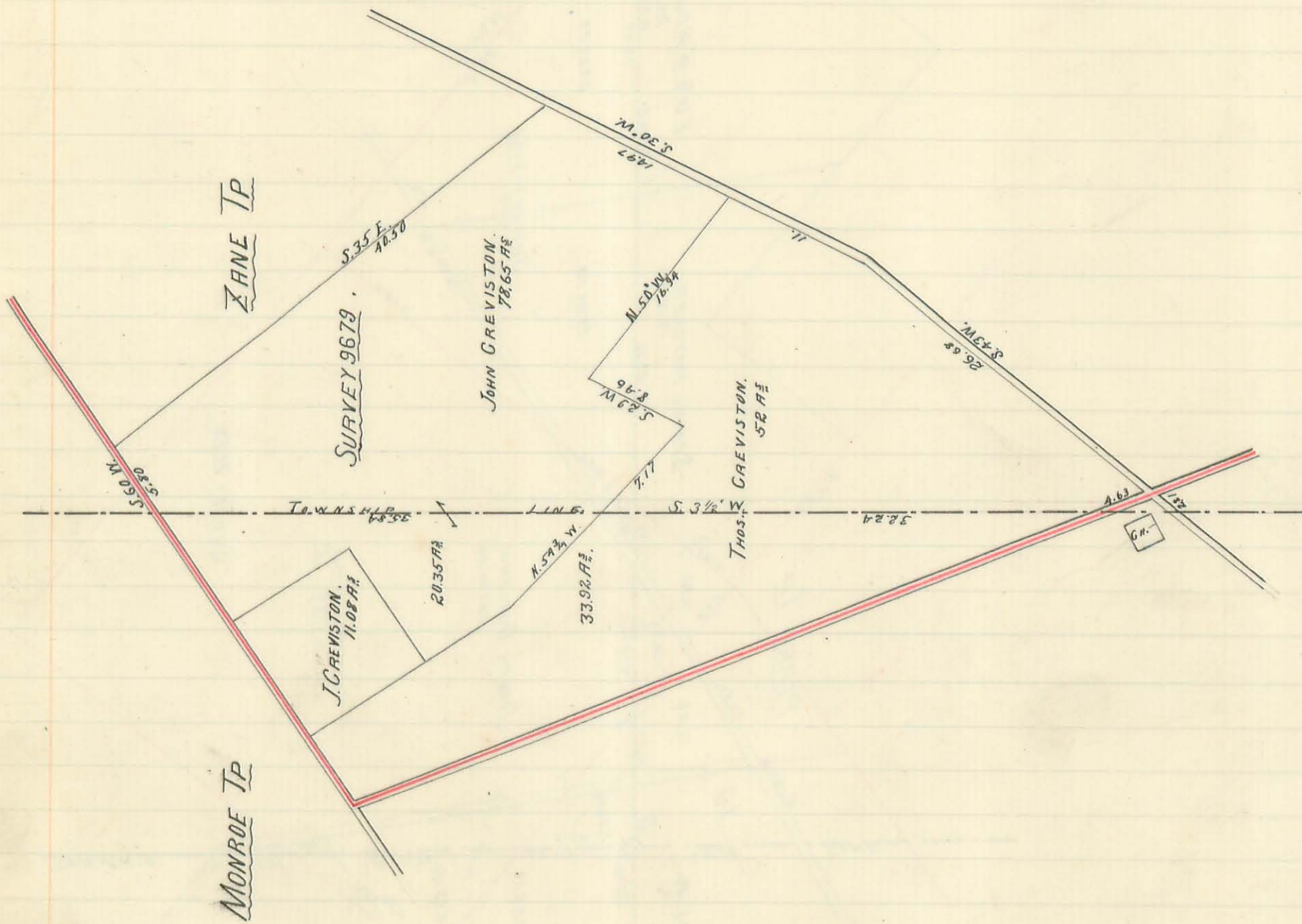
IN REGULAR ORDER THIS PLAT FOLLOWS THAT OF SURVEY N^o 4570.
(PLACED HERE BY MISTAKE)

ZANE & MONROE TOWNSHIP LINE

PLAT OF PART OF VIRGINIA MILITARY SURVEY N^o 9679.

SHOWING THE LOCATION OF SAID LINE AND THE NUMBER OF ACRES IN EACH TOWNSHIP,
OF THE FARMS INTERSECTED BY SAID LINE.

328



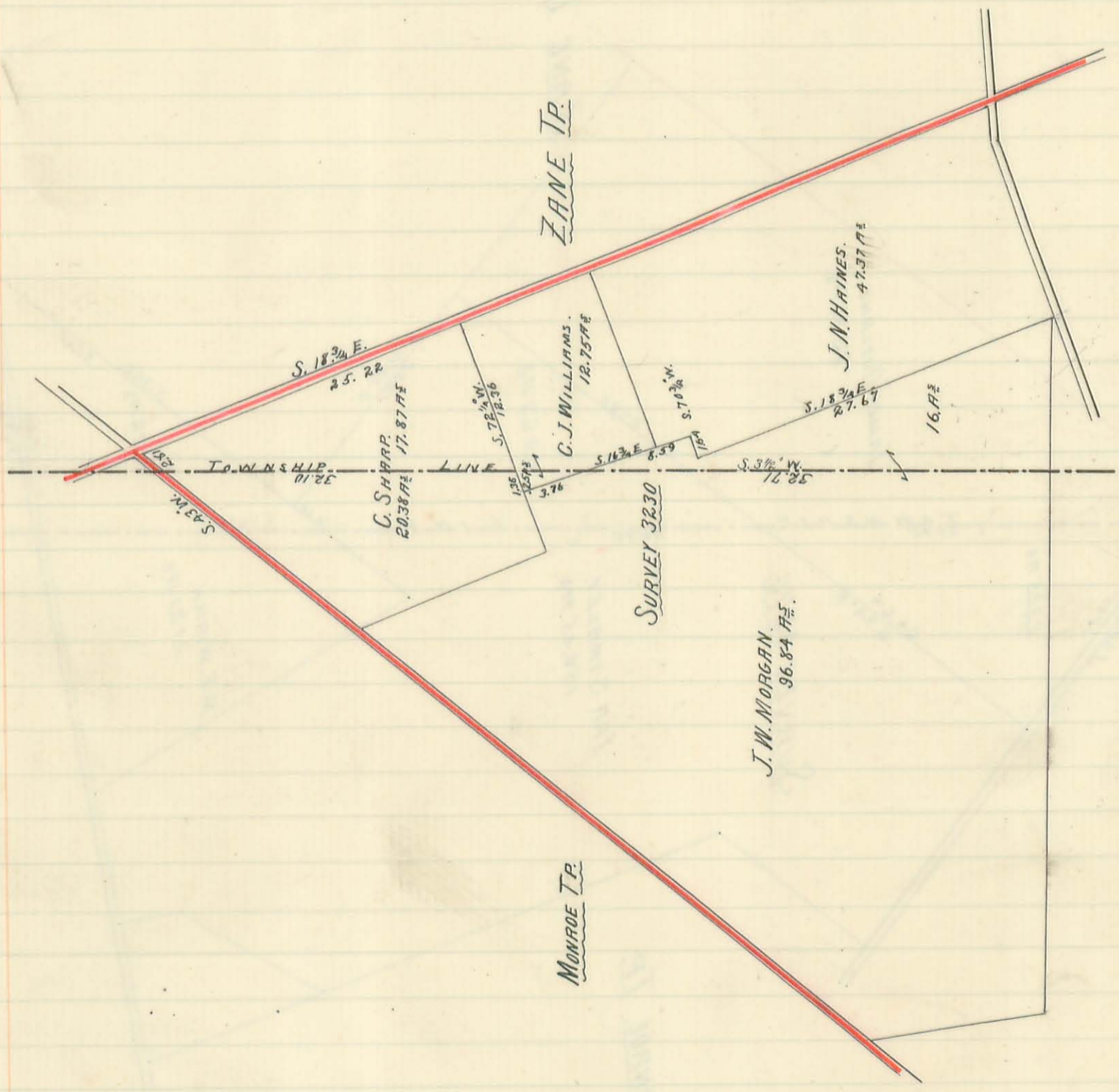
Surveyed as shown above Jan. 27. - Feb 20, 1891
James C. Houdrist
Surveyor Logan Co. O.

23 lines 50 words.

ZANE & MONROE TOWNSHIP LINE.
 PLAT OF PART OF VIRGINIA MILITARY SURVEY. N^o 3230.
 SHOWING THE LOCATION OF SAID LINE AND THE NUMBER OF ACRES IN EACH TOWNSHIP,
 OF THE FARMS INTERSECTED BY SAID LINE.

529

INDEXED ON MAP



Surveyed as shown above Jan. 27. - Feb. 20. 1891
 Jas. C. Stouder
 Surveyor Logan Co. O.

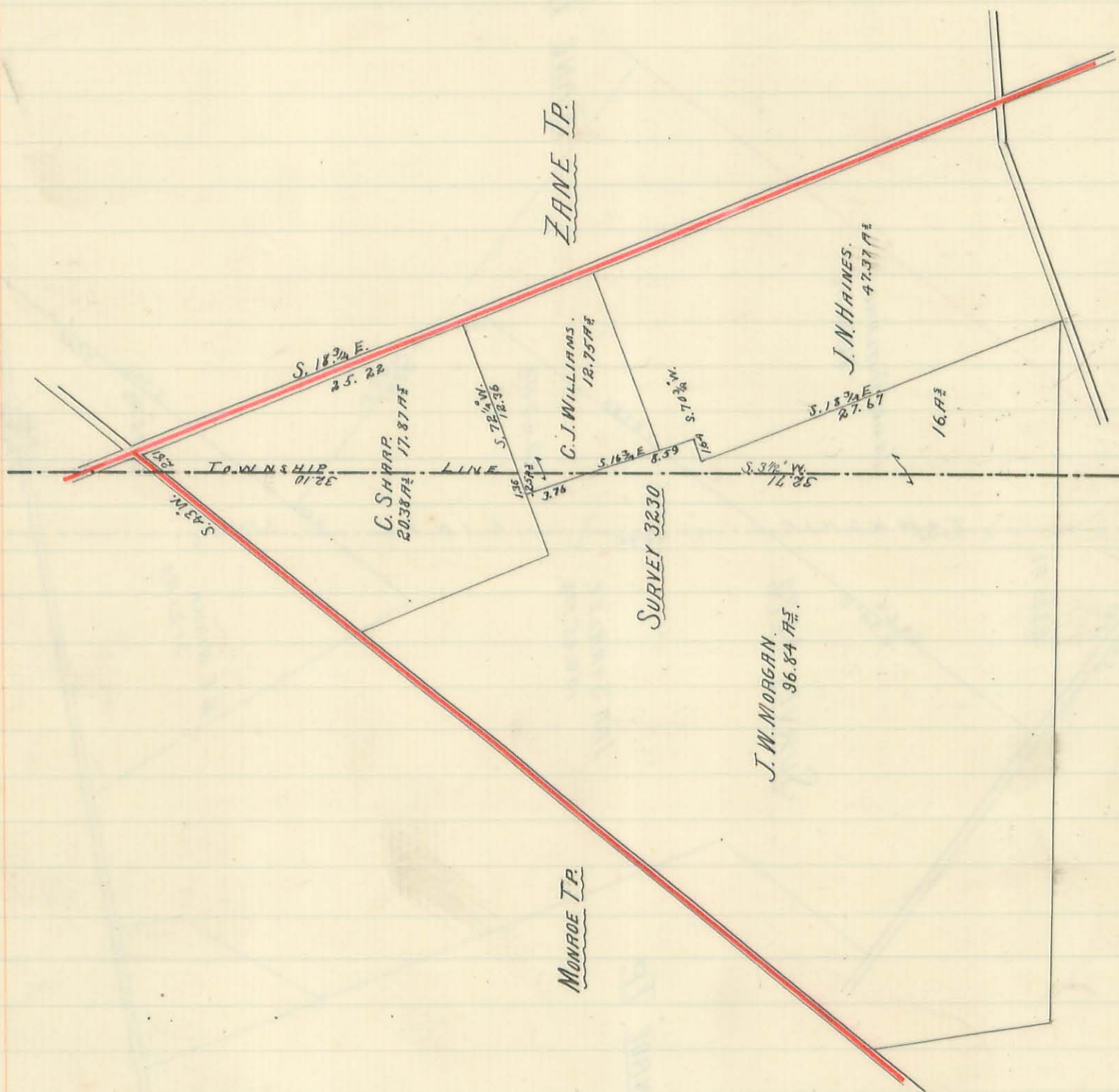
ZANE & MONROE TOWNSHIP LINE.

PLAT OF PART OF VIRGINIA MILITARY SURVEY. N^o 3230.

SHOWING THE LOCATION OF SAID LINE AND THE NUMBER OF ACRES IN EACH TOWNSHIP,
OF THE FARMS INTERSECTED BY SAID LINE.

529

INDEXED ON MAP

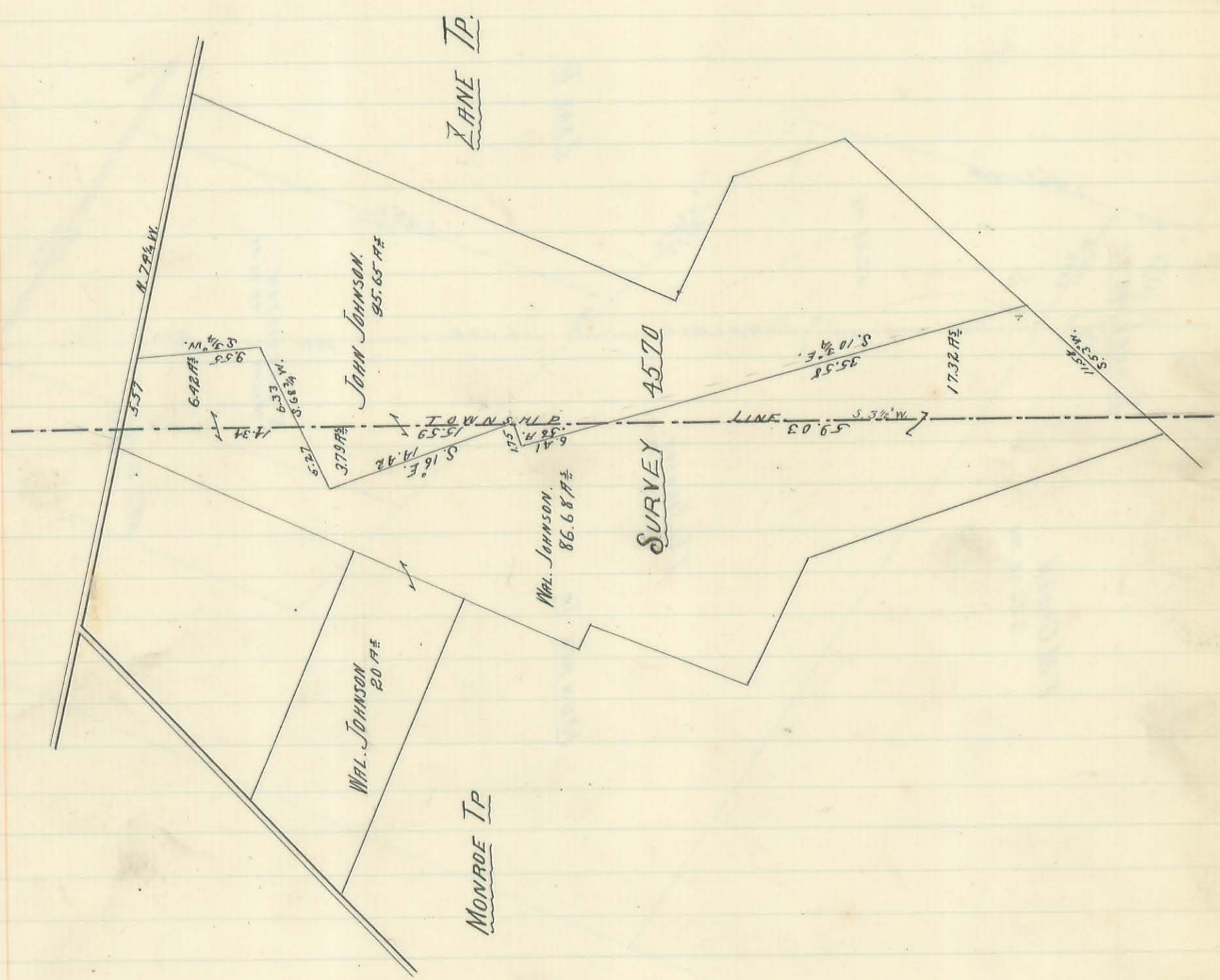


Surveyed as shown above Jan. 27, - Feb. 20, 1891
Jas. C. Hendrix
Surveyor Logan Co. O.

ZANE & MONROE TOWNSHIP LINE.
 PLAT OF PART OF VIRGINIA MILITARY SURVEY NO. 4570.
 SHOWING THE LOCATION OF SAID LINE AND THE NUMBER OF ACRES IN EACH TOWNSHIP,
 OF THE FARMS INTERSECTED BY SAID LINE.

(531)

INDEXED ON MAP



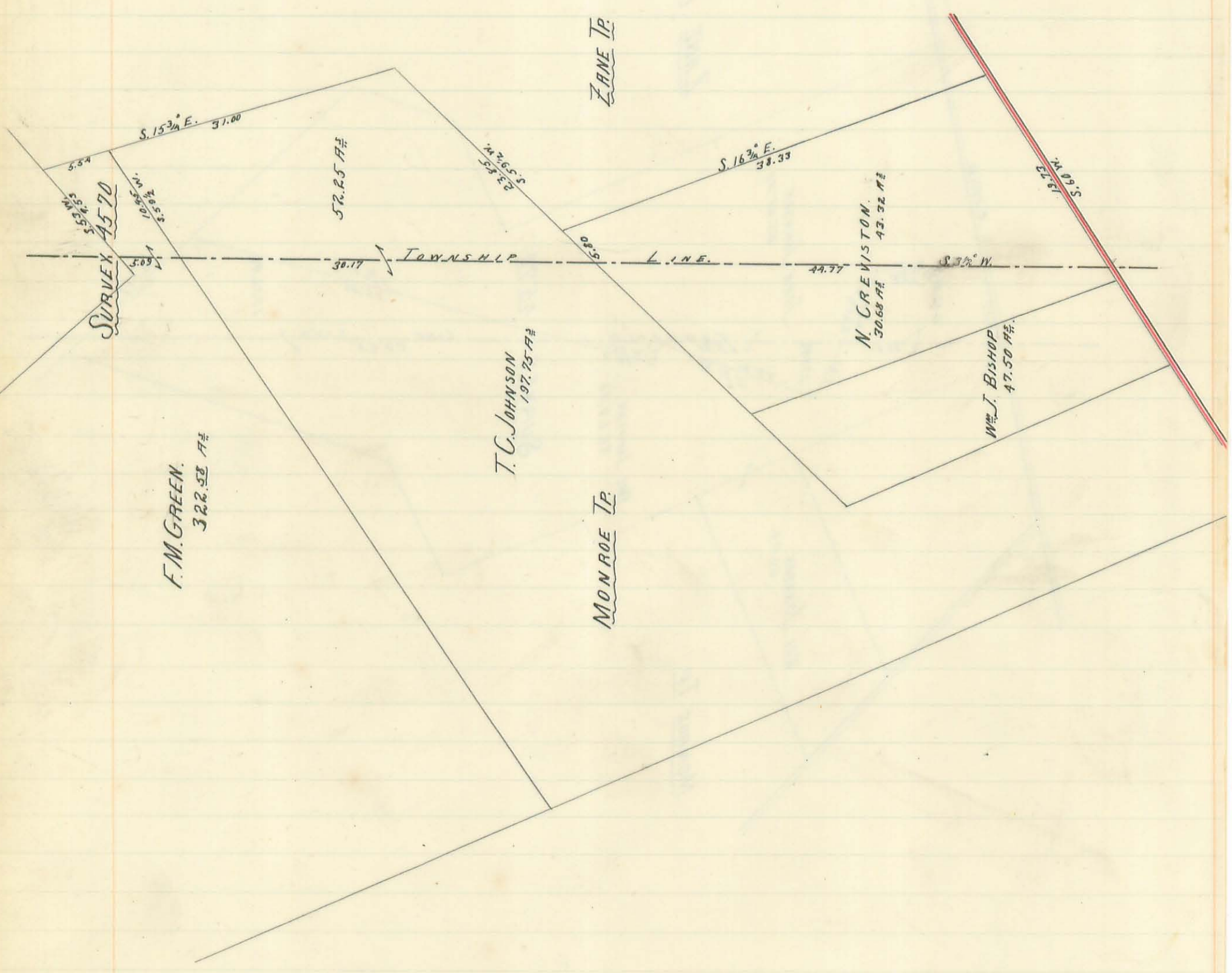
Surveyed, as shown above Jan. 27 - Feb. 20, 1891
 Jas. C. Houders
 Surveyor Logan Co. O.

10 lines 50 rods.

ZANE & MONROE TOWNSHIP LINE.
PLAT OF PART OF VIRGINIA MILITARY SURVEY N^o 4570.

SHOWING THE LOCATION OF SAID LINE AND THE NUMBER OF ACRES IN EACH TOWNSHIP,
OF THE FARMS INTERSECTED BY SAID LINE.

532
INDEXED ON MAP



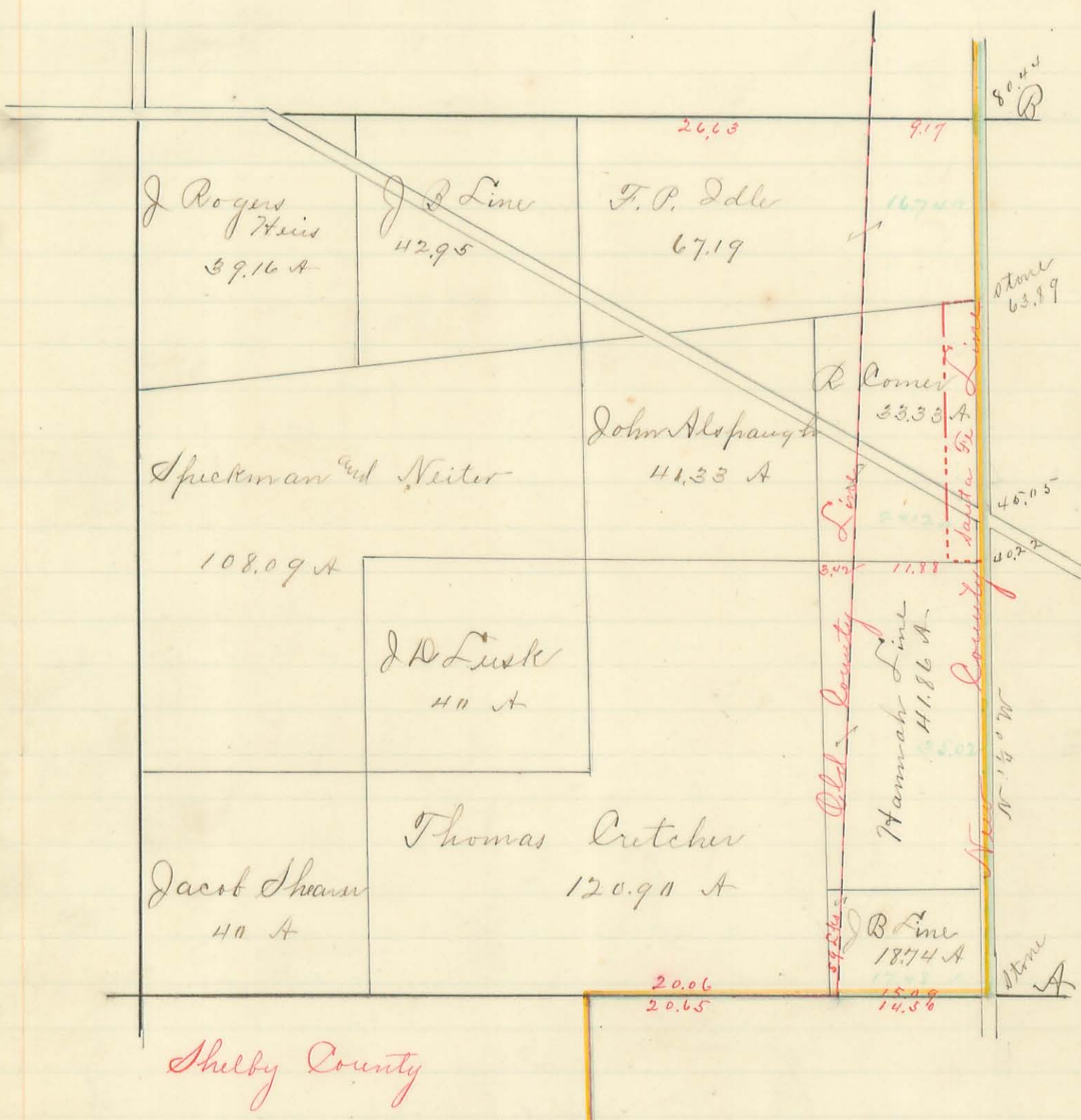
Surveyed as shown above Jan 27. - Feb. 20, 1891
Jas. C. Henders
Surveyor Logan Co O.

The original of this page is blank or missing.

Auglaize and Logan County Line

Plat of section N^o 25 Town 6 Range 7
 showing location of old and new County line and the number of acres
 transferred by the change, with the distances in chains from section
 and other corners to both lines

533
 INDEXED ON MAP



Location of Monuments

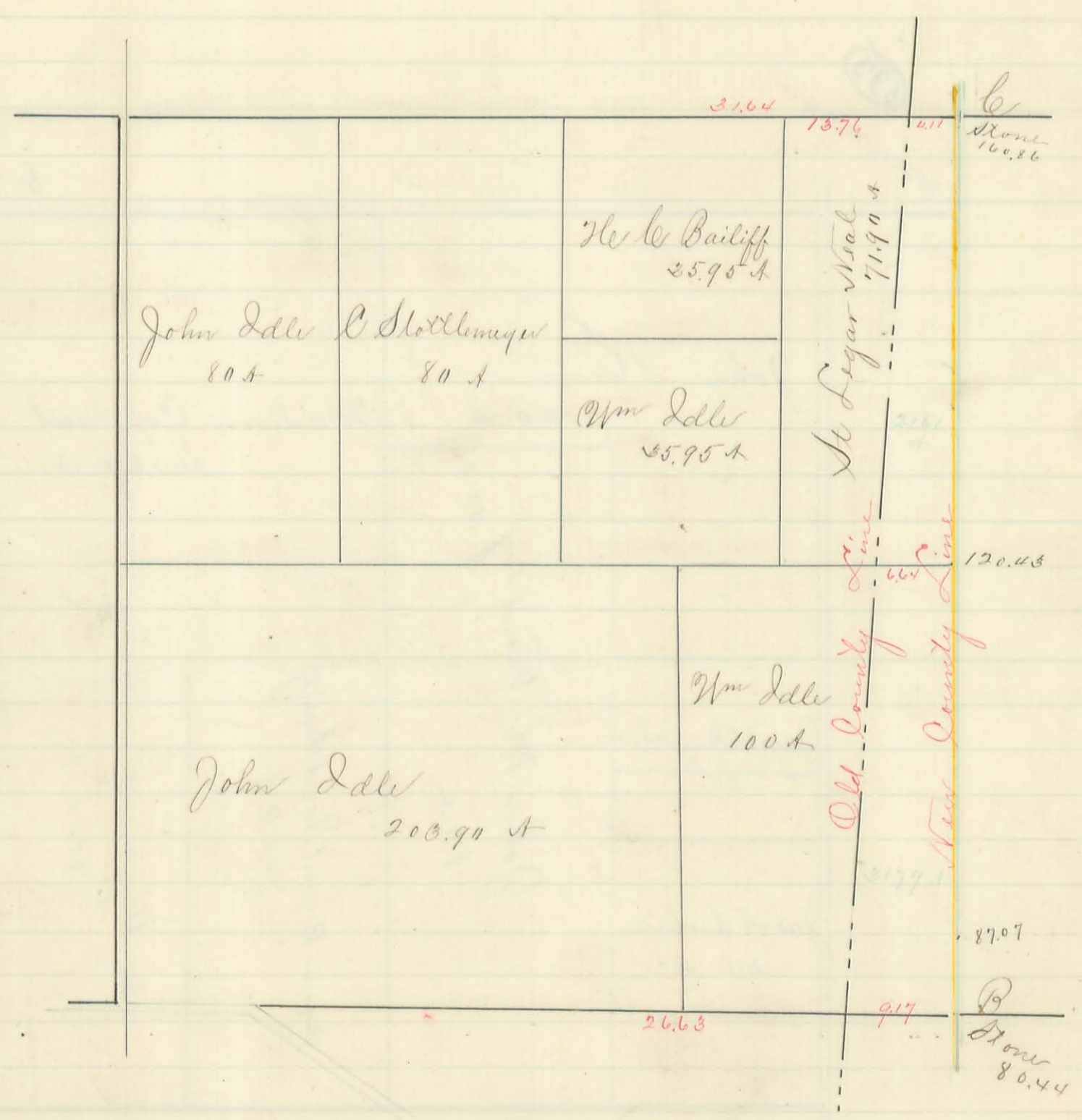
- A Large monument 22 feet east of south east corner of section 25
 - B At south east corner of section 24 Witness Burr Oak 20" S 35 1/2 W 127 links also maple 18" N 48 3/4 E 173 links
- All courses and bearings given are magnetic

Surveyed as above. June 18. 1889 - May 1. 1890
 James C. Hodges
 Surveyor Logan Co. O.

Auglaize and Logan County Line

Plat of section N^o 21 Town 6 Range 7 showing location of old and new County line and the number of acres transferred by the change with the distances in chains from section and other corners to both lines

534
INDEXED ON MAP



Location of Monuments

B At southeast corner of section 24 Witness Bur Oak 20" S 55 1/2° W 127 links also maple 18" S 49 3/4° E 173 links

C At SE corner section 15 Witness W. Ash 10" S 93 1/2° W 71 links also black ash 12" S 34 1/2° W 102 links

All courses and bearings given are magnetic

Surveyed as above June 18, 1889 - May 1, 1890

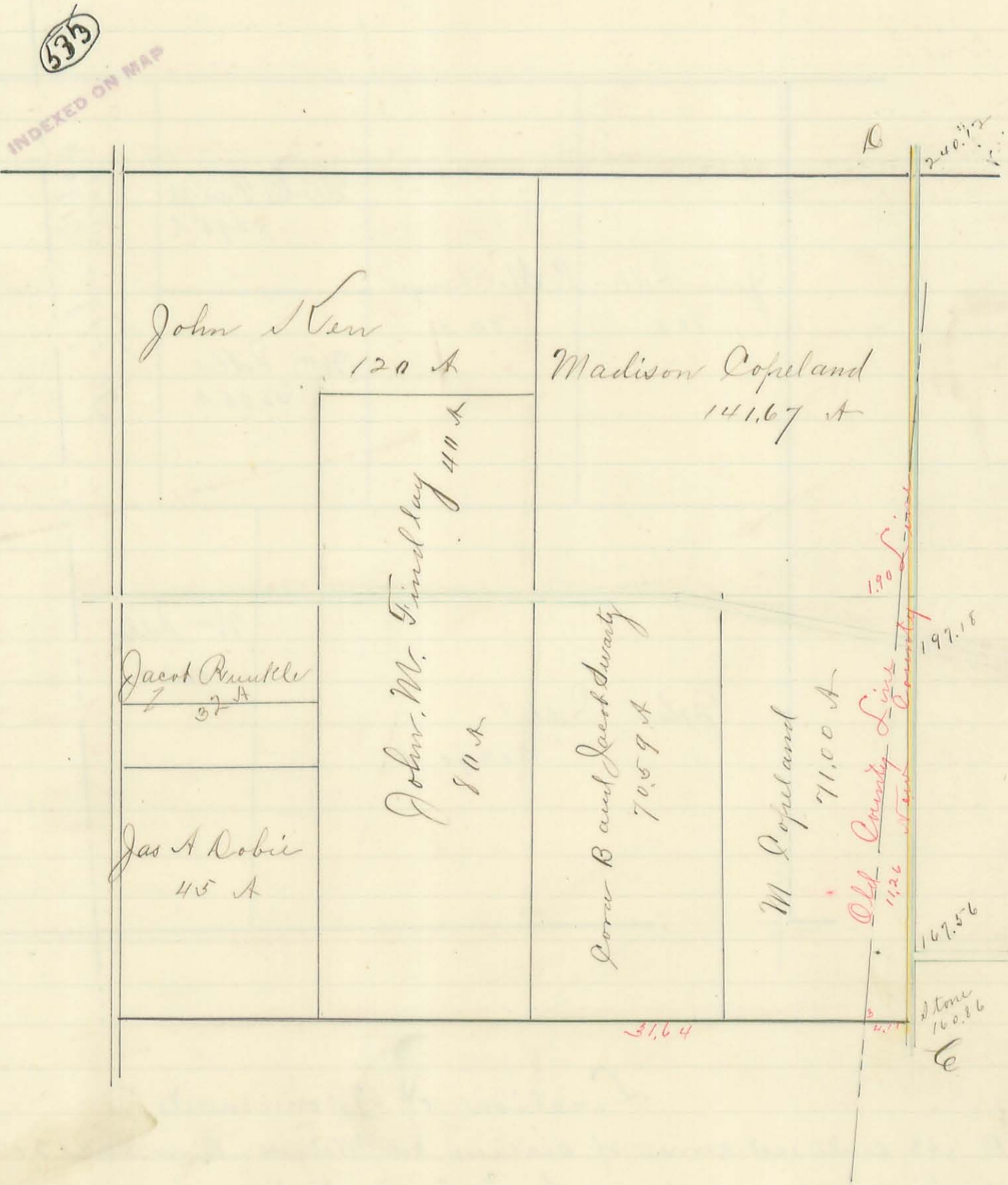
James C. Wondrus
Surveyor Logan Co. O.

Auglaize and Logan County Line
Plat of Section N^o 13 T. 6 R. 17.
Location of Monuments

C at southeast corner of section N^o 13 Witness W Ash 10" S 88¹/₂ W
71 links also black ash 12" S 34¹/₂ W 102 links

D at south west corner section N^o 7 Witness black ash 15" N 61³/₄ E
147 links also B Oak 12" N 13¹/₄ E 257¹/₂ links

All courses and bearings given are magnetic
Showing location of old and new County line and the number of
acres transferred by the change with the distances in chains from
section and other corners to both lines



Surveyed as above June 18, 1889 - May 1, 1890
James C. Houdus
Surveyor Logan Co., O.

Auglaize and Logan County Line

Plat of section N^o 18 T. 6. R. 8.

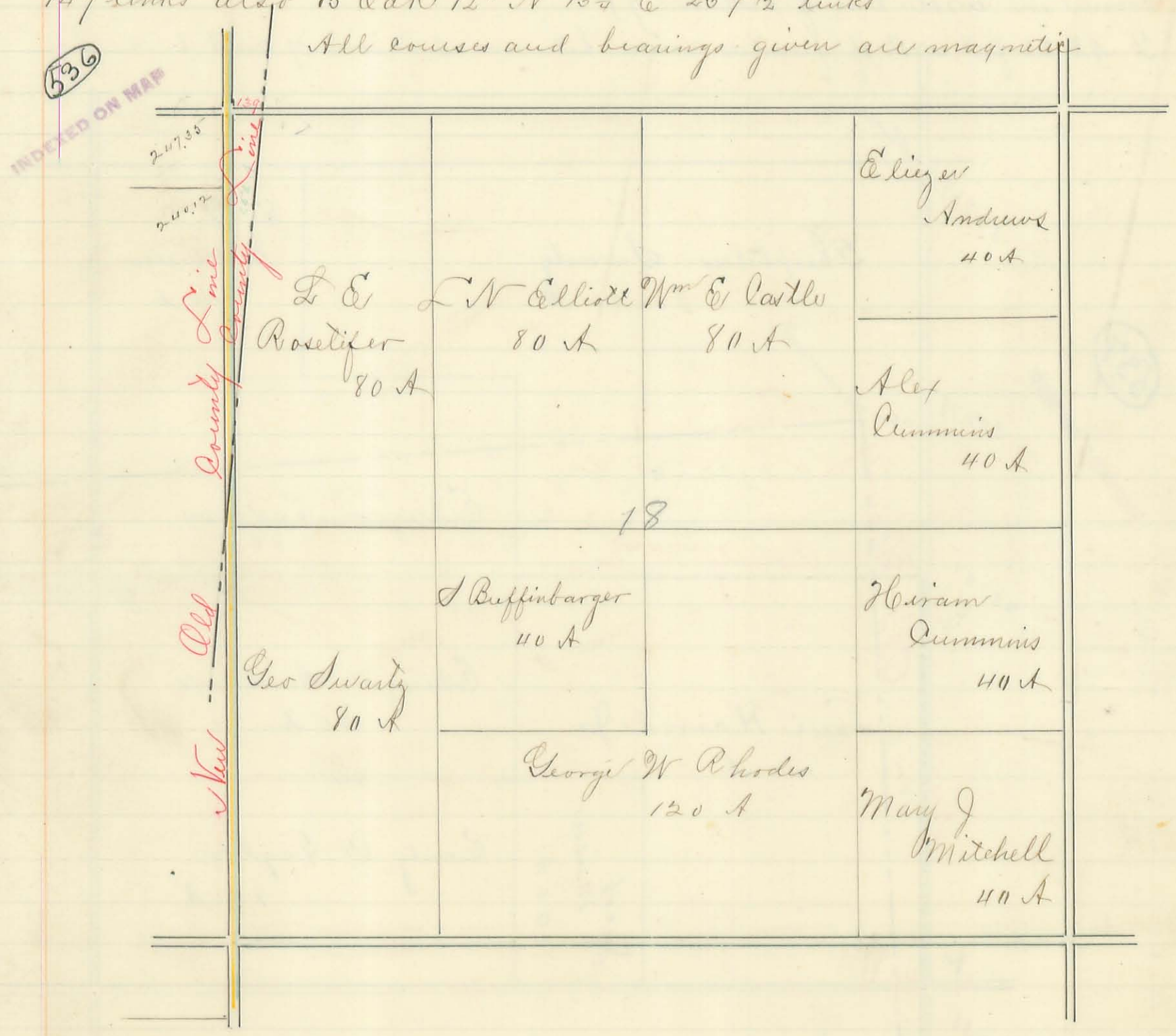
Showing location of old and new County lines and the number of acres transferred by the change, with the distances in chains from section and other corners to both lines

Location of Monuments

C at southeast corner of section N^o 13 Witness W Ash 10" S 88 1/2 W 71 links also black ash 12" S 84 1/2 W 102 links

D at southwest corner section N^o 7 Witness black ash 15" N 61 1/4 E 147 links also B Oak 12" N 13 1/2 E 257 1/2 links

All courses and bearings given are magnetic



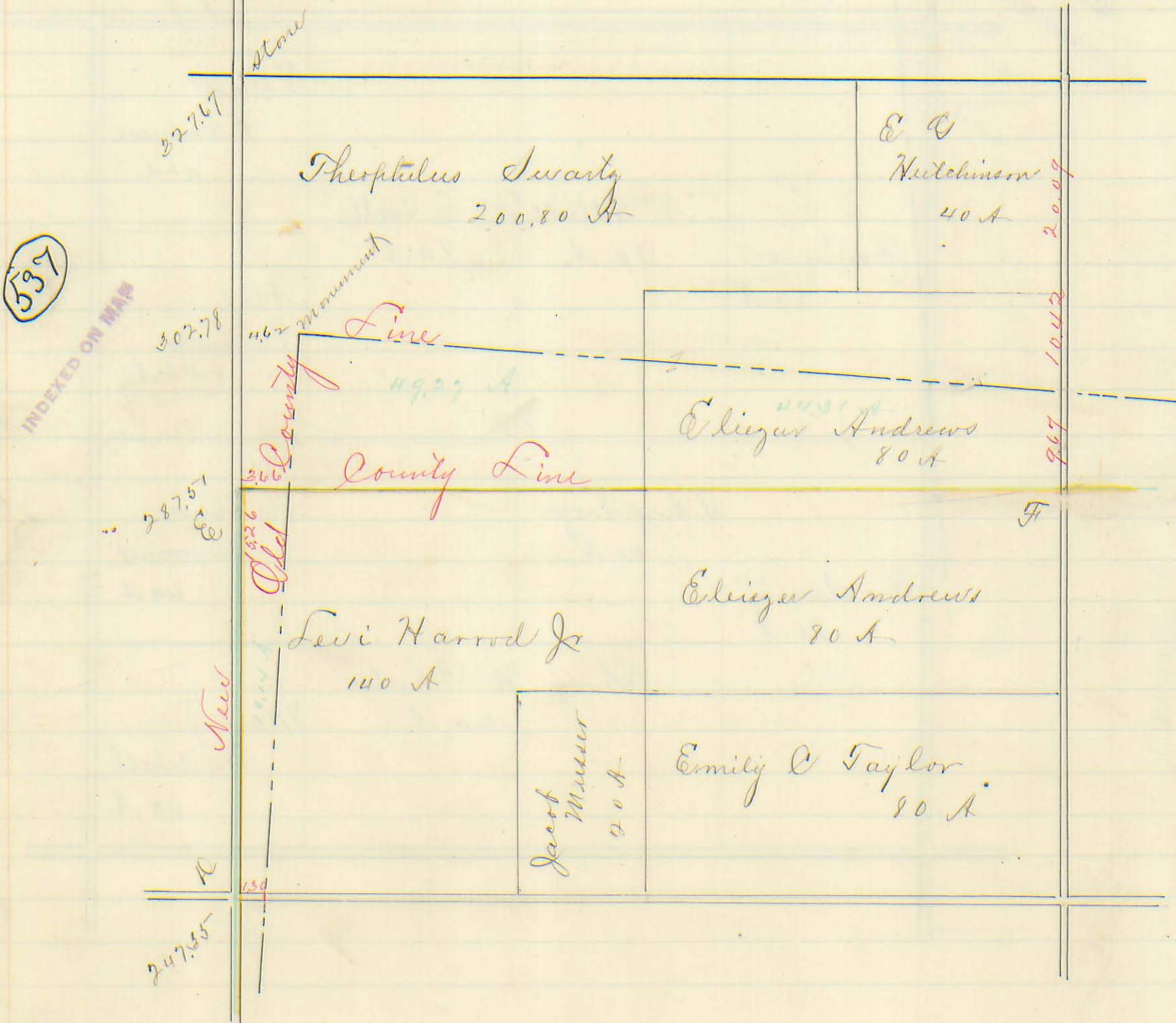
Surveyed as above June 18. 1889. May 1. 1890
James C. Hodrus
Surveyor Logan Co. O.

Auglaize and Logan County Line

Plat of section No 7 Town 6 Range 8
 Showing location of old and new County line and the number
 of acres transferred by the change with the distances in chains from
 section and other corners to both lines

Location of Monuments

D At S W corner Sec 7 Witness black ash 15" N 61³/₄ E 147 links
 also B Oak 12" N 13¹/₄ E 257¹/₂ links
 E Large monument 22 feet west of NW corner Logan County (The quarter
 corner on west line of section 7)
 F At 22 feet west of quarter corner between sections 7 and 8



Surveyed as above June 18, 1889 - May 1, 1890
 James C. Woodus
 Surveyor Logan Co. O.

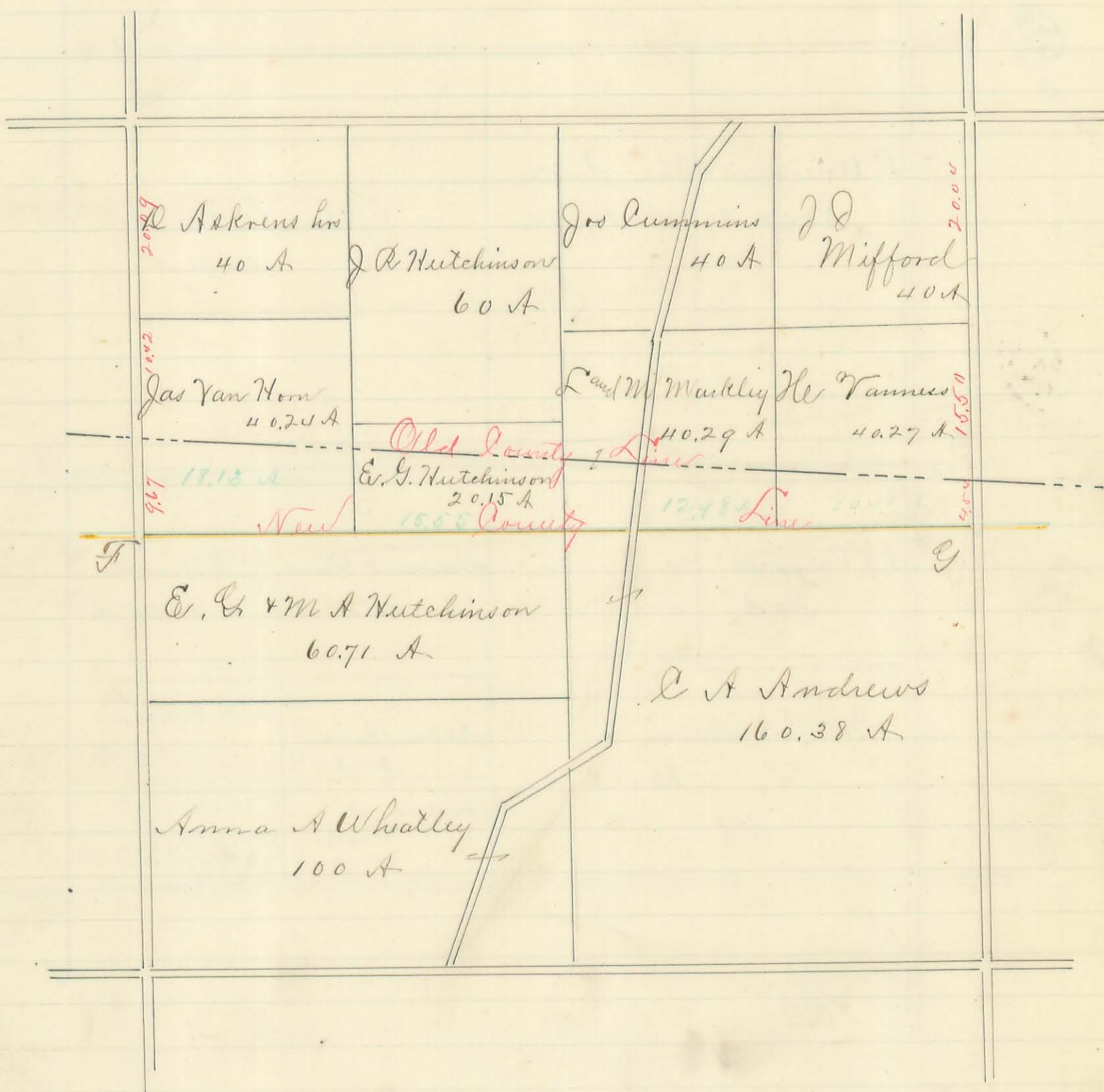
Auglaine and Logan County Line
Plat of section No 8 Town 6 Range 8

Location of monuments

F at 22 feet west of quarter corner between sections 7 and 8
G at quarter corner between sections 8 and 9 witness B Oak 3"
N 48 W 49 links Hickory 3" N 71 1/2 E 59 links and W Oak 22"
N 38 1/2 E 67 1/2 links

538

INDEXED ON MAP



Surveyed as above June 18, 1889 - May 1, 1890.
James C. Wonders
Surveyor Logan Co. O.

Auglaize and Logan County Line Survey

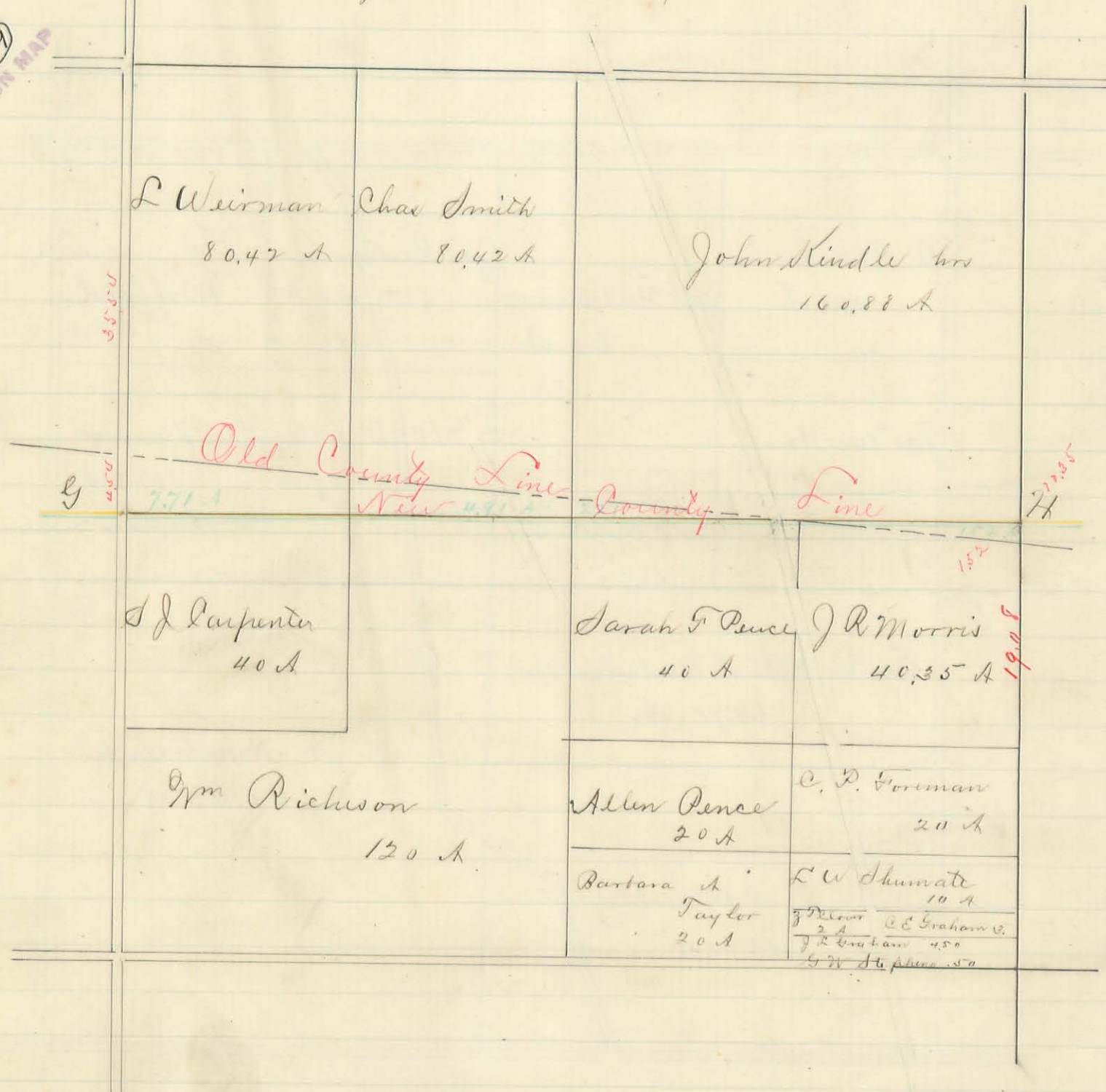
Plat of Section No 9 Town 6 Range 8
 showing location of old and new county line and the number of acres transferred by the change with the distances in chains from section and other corners to both lines

Location of monuments

G at quarter corner between sections Nos 8 and 9 witness B Oak 3" N 48° W 49 links. Hickory 3" N 71 1/2° E 59 links and W Oak 22" N 38 1/2° E 67 1/2 links

H at quarter corner between sections Nos 9 and 10
 All courses and bearings given are magnetic

539
 INDEXED ON MAP



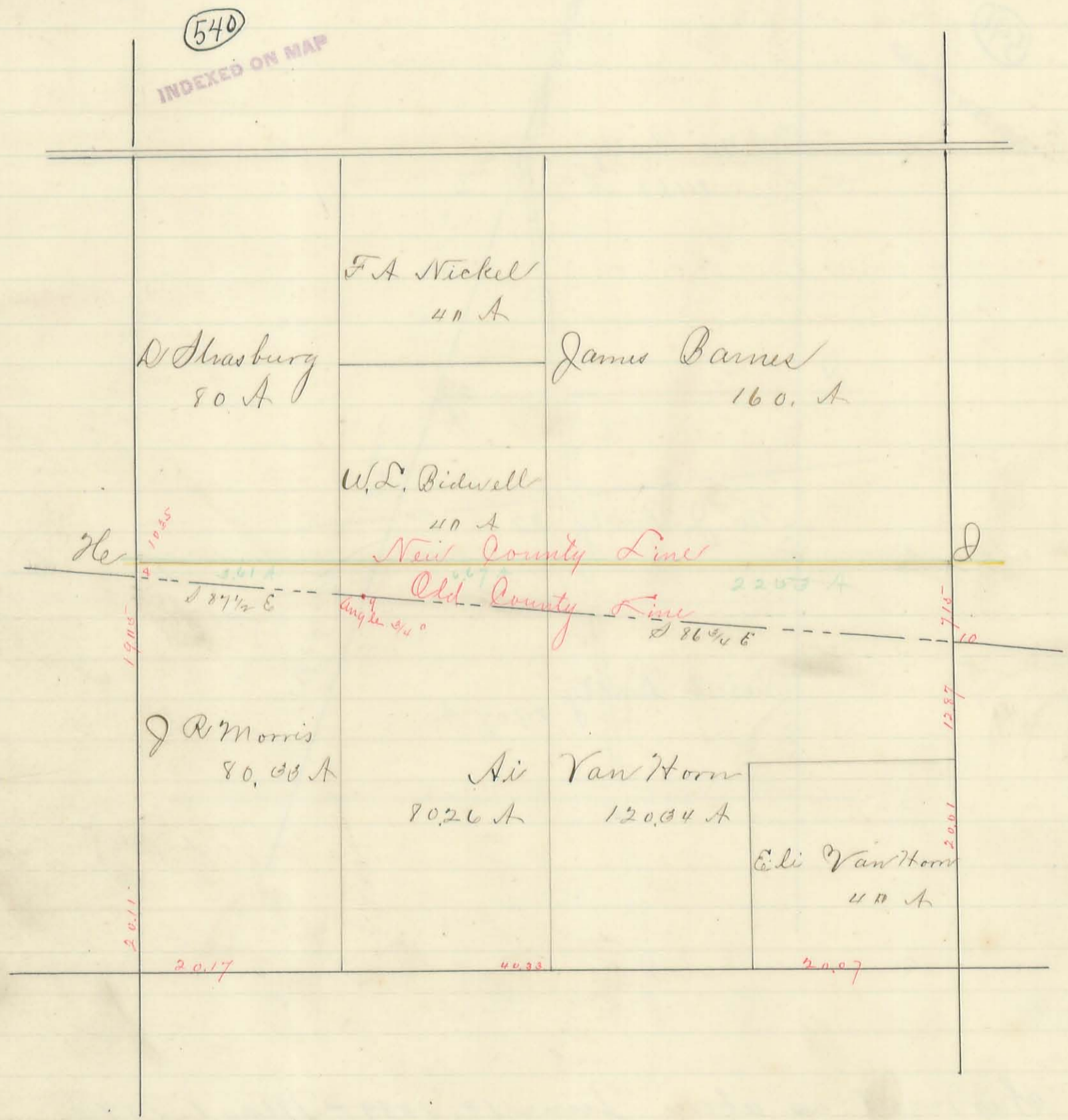
Surveyed as above June 18, 1889 - May 1, 1890
 James C. Houders
 Surveyor Logan Co. O.

Auglaize and Logan County Line

Plat of section N^o 10 Town 6 Range 8 showing the location of old and new county line and the number of acres transferred by the change, with the distances in chains from section and other corners to both lines

Location of monuments

Hc at quarter corner between sections 9 and 10
D at quarter corner between sections 10 and 11 witness B Oak 24"
N 62 W 19 links



Surveyed as shown above June 18. 1889 - May 1. 1890
James C. Houdred
Surveyor Logan Co. O.

Auglaize and Logan County Line

Plat of section N^o 11 Town 6 Range 1 showing location of old and new county line and the number of acres transferred by the change, with the distances in chains from section and other corners to both lines

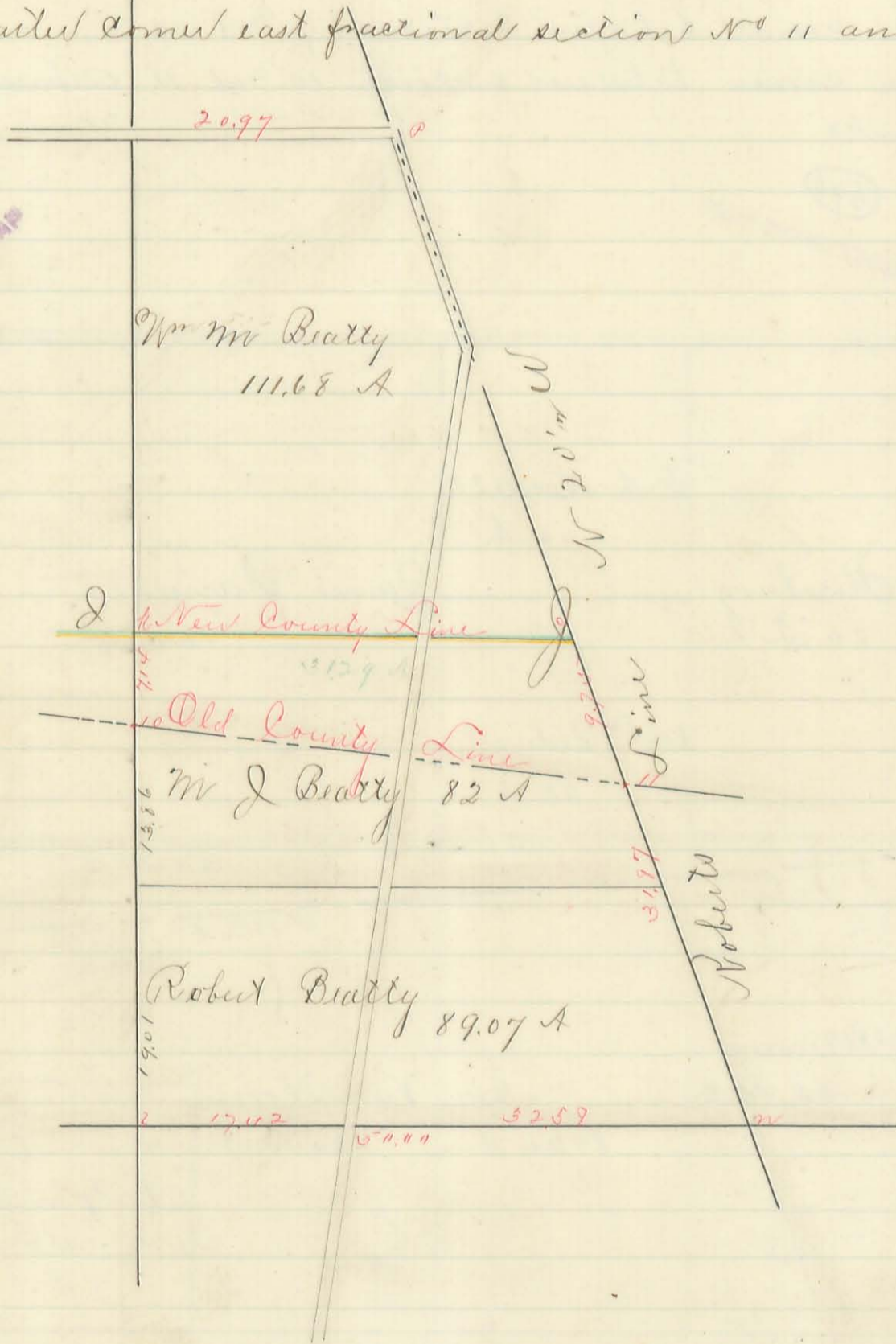
Locations of monuments

2 at quarter corner between sections 10 and 11 Walnut B Oak 24" N 62 1/2 W 19 links

2 at quarter corner east fractional section N^o 11 and in the Roberts line

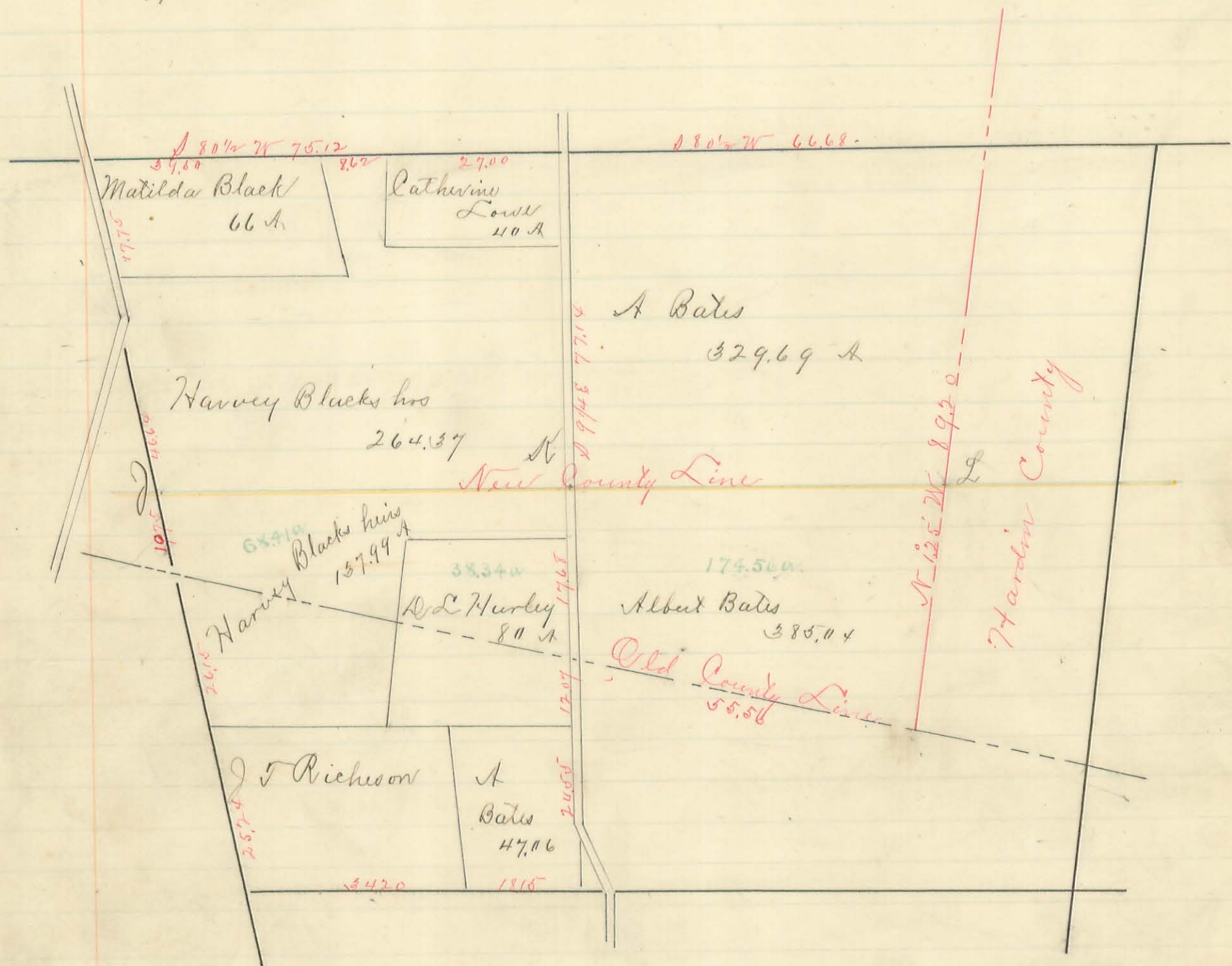
(541)

INDEXED ON MAP



Surveyed as above June 18, 1889. - May 1, 1890
James C. Hondrus
Surveyor Logan Co. O.

Anylaige and Logan County Line
 Plat of Mil Survey No 12277 showing location of old and new County
 line and the number of acres transferred by the change, with the
 distances in chains from section and other corners to both lines
 Location of monuments
 J. at quarter corner east fractional section No 11 and in the Roberts line
 N. in County line 24 feet east of center of Black road in Survey 12277
 L. large monument at intersection of the line of Logan and
 Anylaige Counties with the west line of Hardin County in Survey
 12277



Surveyed as above June 18. 1889 - May 1. 1890
 James C. Hodrus
 Surveyor Logan Co O.

The original of this page is blank or missing.