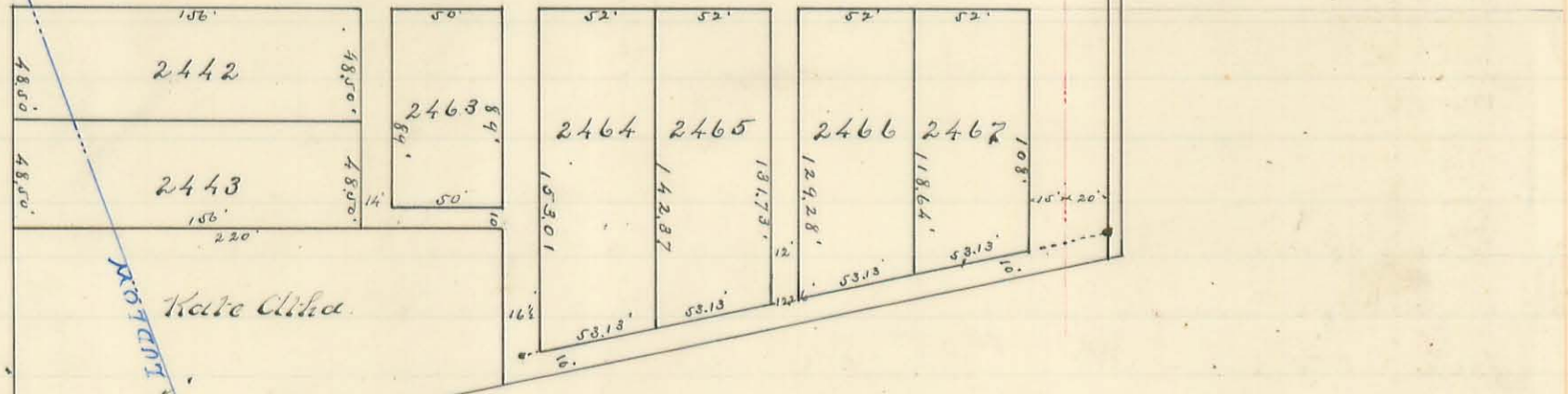
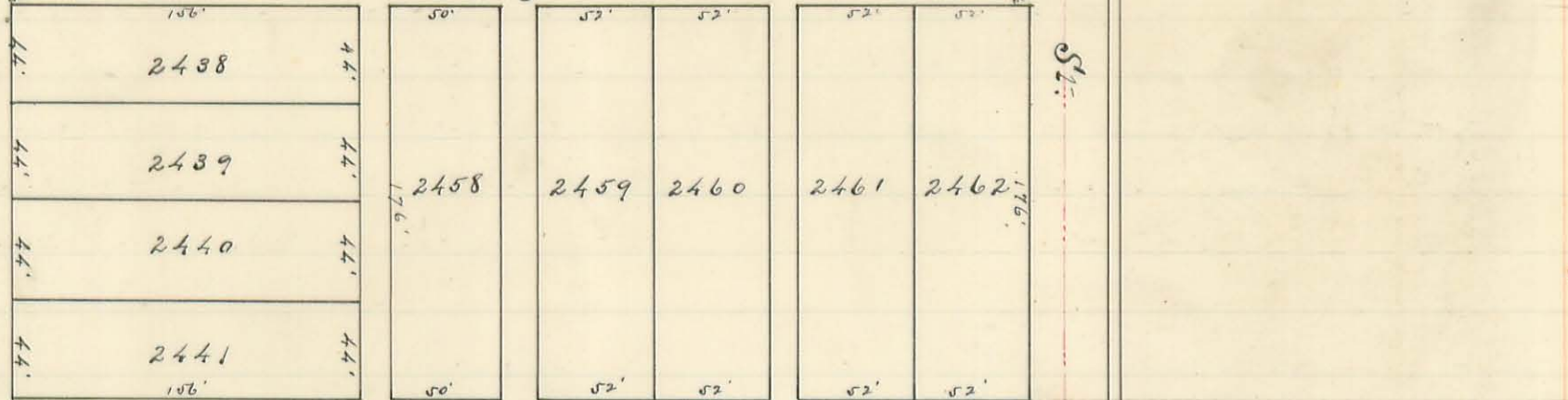
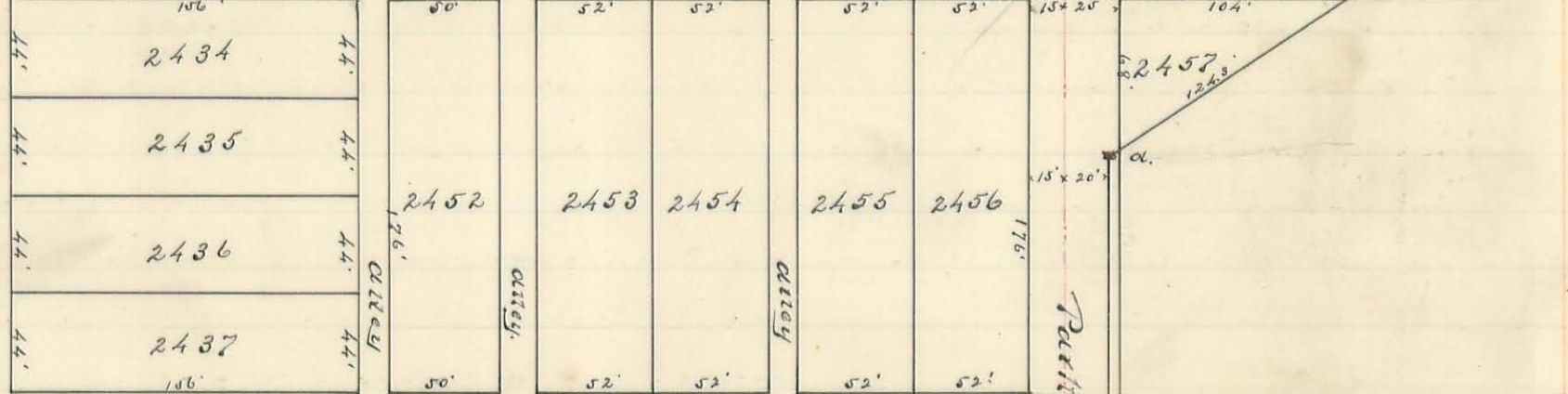
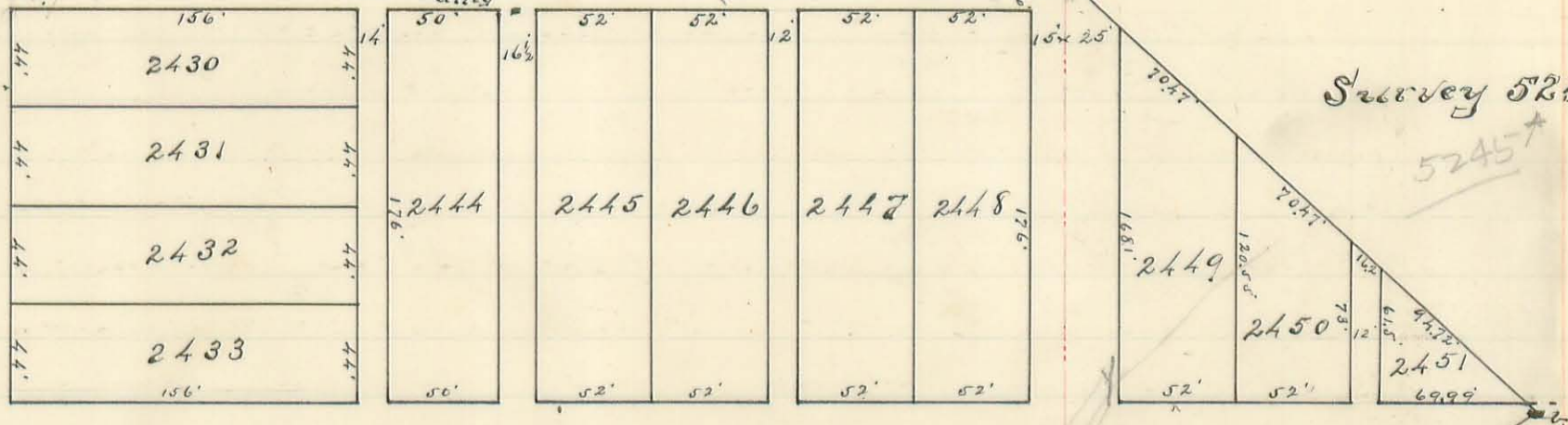


The original of this page is blank or missing.

464

Marion Palmer 1199.16

Survey 5245
5245



Kate Clith

o Iron Pins.
■ Stone Monuments.

Scale 80' = 1"

Mad River St.

Stairs
at
Mad River St.

Sec. 35.

Palmer's
Addition

The Irving Place Addition to Bellefontaine Ohio.

Surveyor's Certificate: I the undersigned Surveyor do hereby certify that the annexed plat is a true and accurate representation of Irving Place Addition as surveyed and laid out by me on the 14th and 20th Days of June, 1900, and that the following is an accurate description of the same, Commencing at a stone monument in the east line of Mad River St. and 90 feet N. of the continuation of the N. line of Palmer Addition; thence S. 87° E. 220 feet to a stone monument; thence S. 3° W. 68 feet to a stone monument; thence N. 81° 9' E. and with Rausenberger's N. line to a point being 20' E. of the center at right angles of Park Avenue; thence N. 3° E. and parallel and 20' E. of the center of Park Avenue to a stone monument and in line with a.b. and Rausenberger's N.W. line; thence N. 60° 4' E. to a stone monument at the extreme E. corner of said Addition; thence N. 44° 33' W. 281.16 feet to a stone monument and at the S.E. corner of Maria Rathmel's tract; thence N. 87° W. 479.16 feet to a stone monument and in the E. line of Mad River St. and at Maria Rathmel's S.W. corner; thence S. 3° W. and with the E. line of Mad River St. to the beginning, containing 9.73 Acres.

All streets and alleys are parallel with or at right angles to Mad River St. excepting the south alley extending from Park Ave. to center alley and have their respective distances marked in feet and tenths on line thereof.

All intersections of streets and boundary lines are marked by stone monuments or iron pins as shown on the annexed plat and all angles are marked in degrees and minutes. I hereby subscribe my name this 31st day of July A.D. 1900.

Wilbur A. Giun Surveyor.

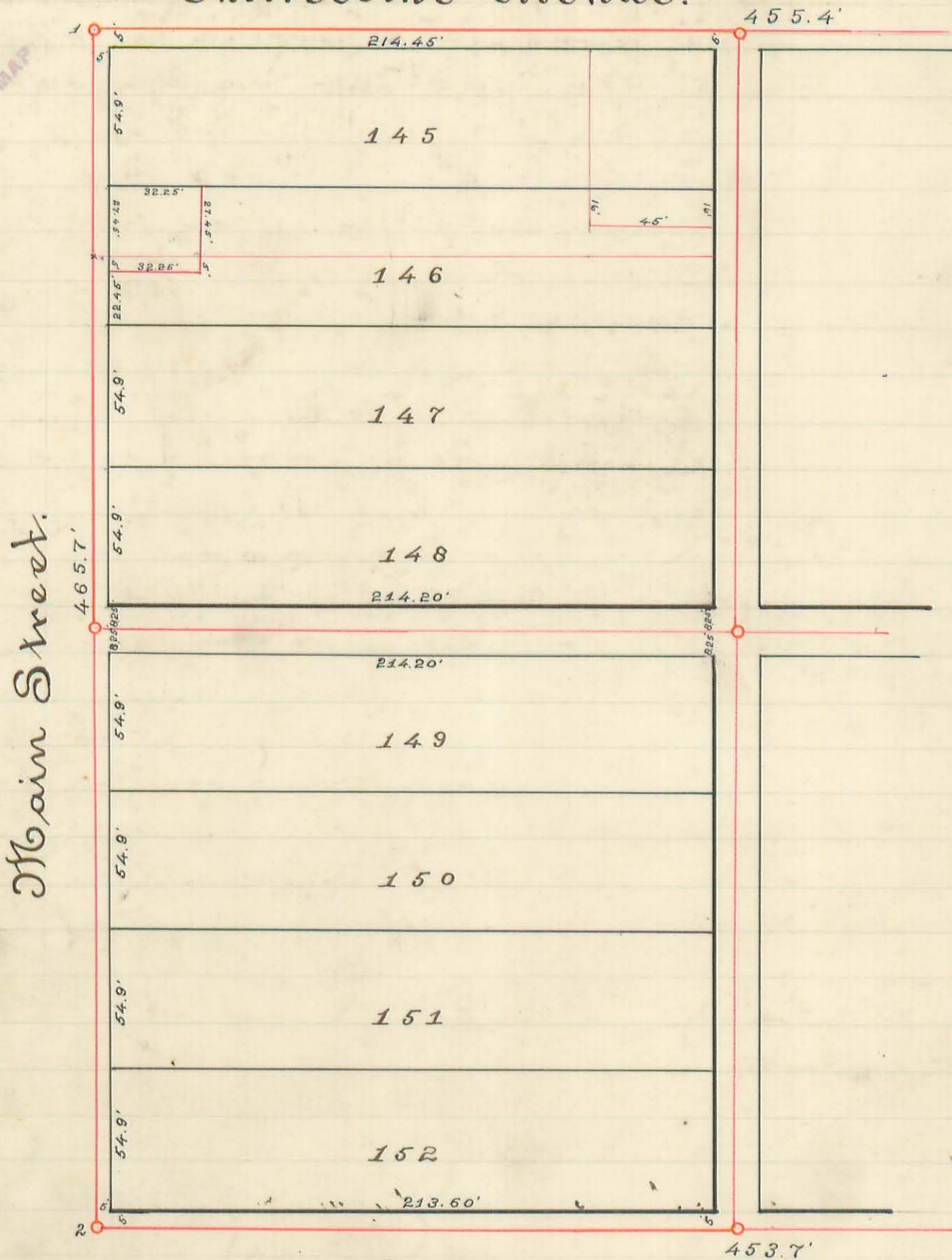
The original of this page is blank or missing.

The original of this page is blank or missing.

Chillicothe Avenue.

465

INDEXED ON MAP



Auburn Avenue.

- N^o 1 Marked by 1/2 inch hole bored in side walk stone 5 feet out from the true line of lots each way.
- N^o 2 Marked by 1/2 inch iron rod 18" long drove just below the surface and 5 feet out from lot lines each way.
- N^o 3 Not shown on annexed plat is 453.7 feet east of N^o 2 and is also marked with an iron pin 5' out from lot lines each way. it is also marked with a drill mark in S.W. stone in line with south line and 5' east. all lines surveyed around this block are 5' outside of lot lines.
- N^o 4 Marked with drill in S.W. stone 455.4' East of N^o 1. the mark here is also marked with guide stakes at line of lot and corner.

Survey. The above plat represents but half of the survey which was performed to establish the lines to lot N^o 146 and portions sold off the West end of it. To accomplish the object desired the centre lines of Main & Mad River Streets were established North and South also. Chillicothe and Auburn Avenues were established East and West all in line with the regular established monuments of the Incorporation. Then offset lines were made to within 5 feet of the lot lines around the entire block. The measurement there made was distributed proportional across the block.

Surveyors Certificate

Bellefontaine Ohio Nov 18.93.

I the undersigned Surveyor do hereby Certify that - the annexed plat is a true and correct representation of a survey as made by me in the incorporated village of Bellefontaine Ohio, and is a correct rendering according to the laws of Ohio of the division of the lots located and bounded by the streets and Avenues given on the plat. That in order to locate the premises described in a deed of General warranty made by G. W. Emerson Administrator of the estate of Mary Hukiger to Phillip H. Seidigh and Geo C. Seidigh, made on the 12th day of March A.D. 1892. Recorded March 30th 1892. Volume 49. Page 351. Logan Co Records. Which said deed describes the north $\frac{1}{2}$ of lot No 146 in said village and also describes a portion from the south $\frac{1}{2}$ occupied and covered by a brick building and frame addition thereto on said lot No 146.

After making a careful measurement of the entire block of lots and dividing same in proportion to the original divisions marked on plat, I found that the north half of lot No 146 is entitled to Twenty seven and forty five hundredths feet front. by the length which is about Two Hundred and fourteen and thirty three hundredths. feet. The building described in the foregoing described deed to Phillip H. Seidigh and Geo C. Seidigh, extends over on the South half of said lot five feet wide north and south, by Thirty Two and Twenty Five Hundredths feet in length, this measurement made to the outside of the frame weatherboarding on the east side of the building. the projecting eaves of the building extending Eight inches farther East. upon completion of this measurement the old Brick building and frame addition were torn down and a new brick building supplying the same place erected.

Wilbur A. Ginn

County Surveyor

James F. Fisher.

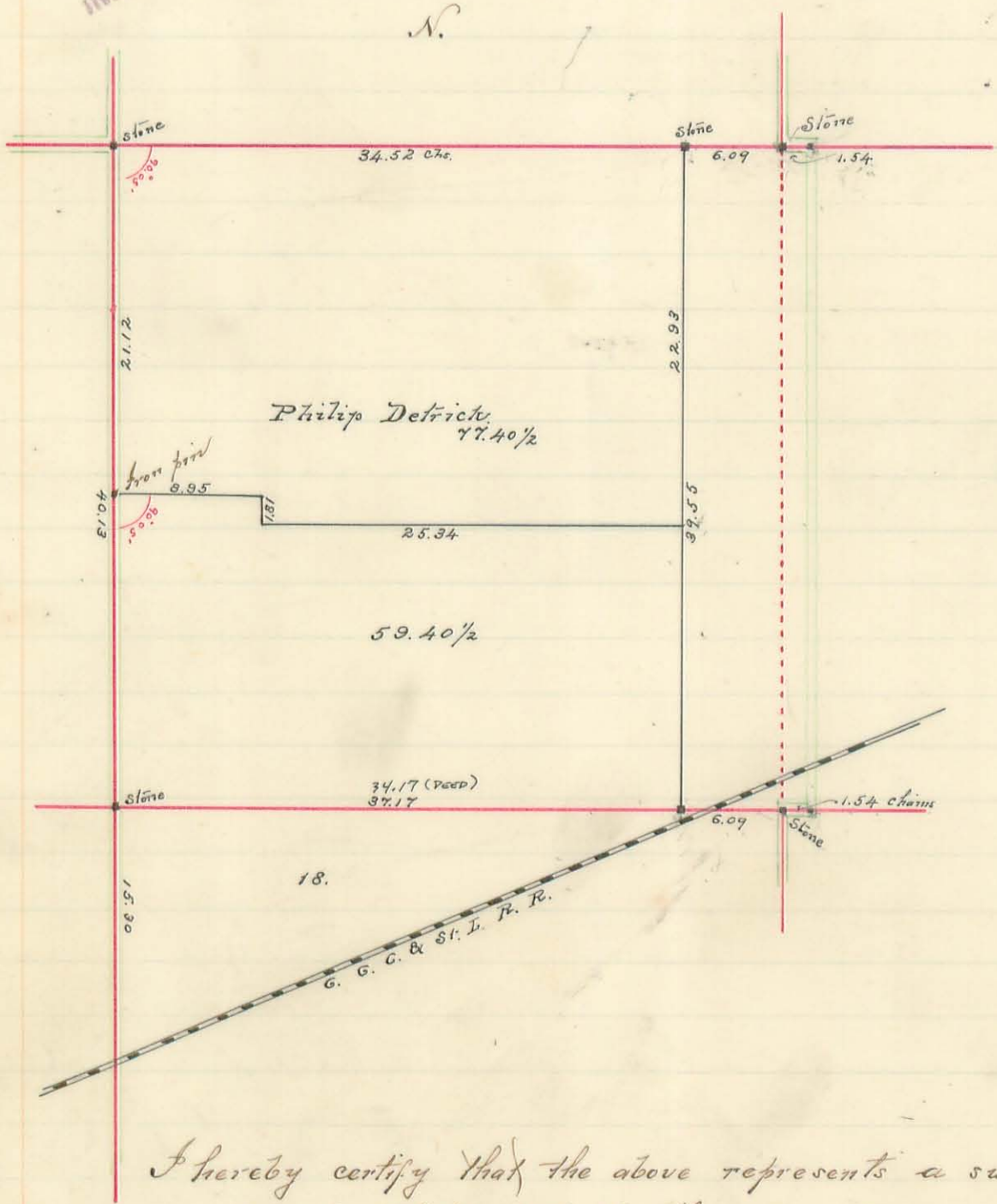
C. Storr, C. Moore Assisting as Chainmen Flagmen &c.

The original of this page is blank or missing.

The original of this page is blank or missing.

466

INDEXED ON MAP



Survey of Tract of Land for
 Philip Detrick
 = in =
 Harrison Township
 Being The
 S.W. 1/4 of Sec. 22, T. 3, R. 14.
 Surveyed 1898

I hereby certify that the above represents a survey as made by me in 1898, for Philip Detrick, The corner stones were found from earlier survey verified and the dividing line run as desired.

James F. Fisher, Deputy C. Surd.

H. Detrick }
 Chas A. Moore } Chain men

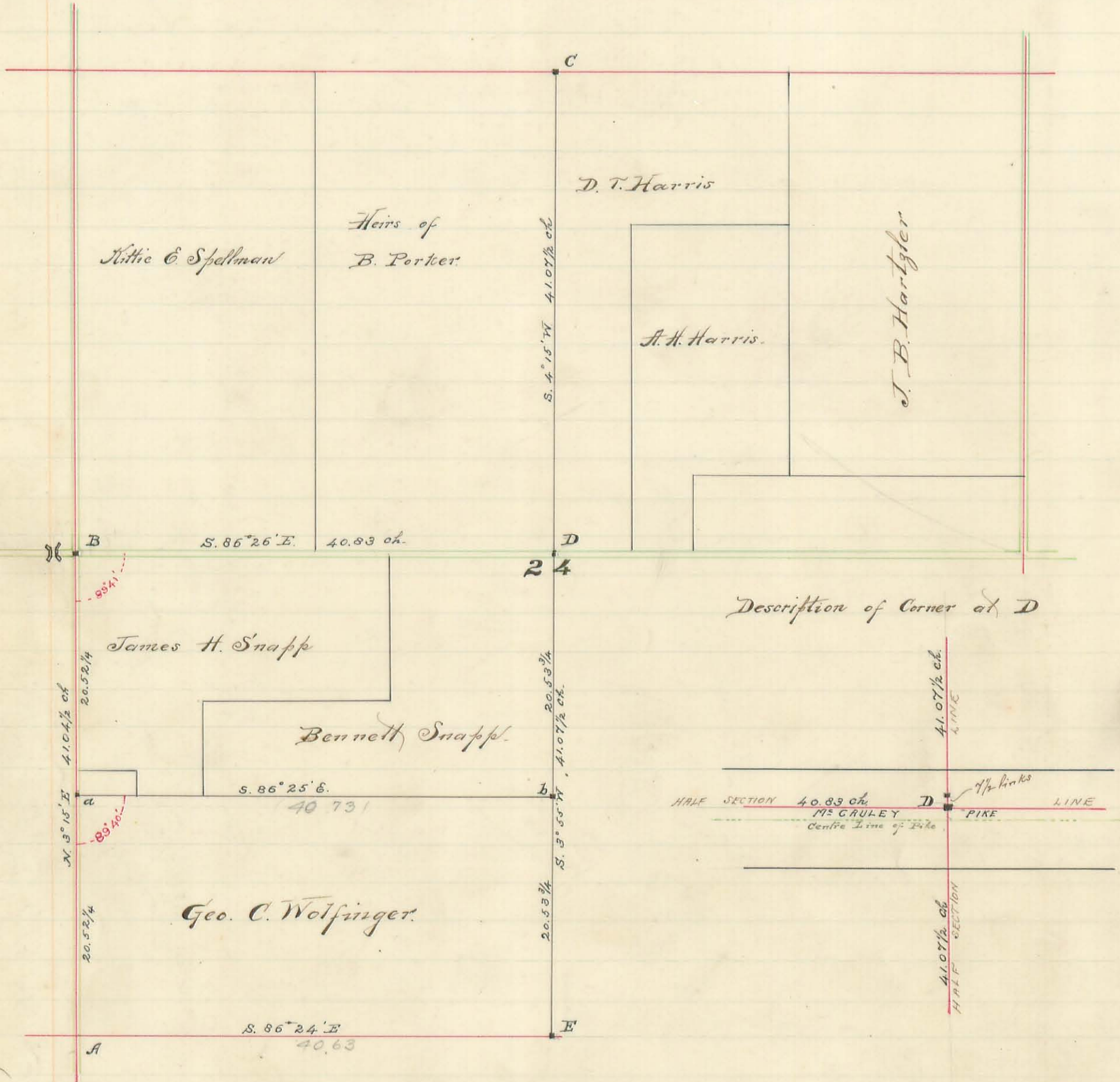
The original of this page is blank or missing.

467

INDEXED ON MAP

Survey made March 12th 1894 for James H. Snapp
Bennett Snapp and Geo. C. Wolfinger.

In
Section 24 Town. 3. Range 14. Harrison Township
Logan Co., Ohio



Witnesses and Monuments:

- A - Stone Granite Boulder - Two boulders, one on top of other - not marked -
- B - Stone Sandstone - E. end coping N.E. corner. 38 1/2 l. S.E. corner 38 1/2 l. Set on broken tile.
- C - Stone, White Boulder - marked with cross on top.
- D - Stone, 1/2 l. S. of a lime stone corner, cross marked on top.
- E - Stone, Boulder " " " " 6" x 6" x 18" White Oak 6 l. S. on line.
- a - Stone, Lime, 6" x 6" x 18" " " " "
- b - Stone Lime 8" x 12" x 24" " " " "

C. Stover }
J. S. Snapp } Chammers.

Hubert H. Gunn, Surv. Logan Co.

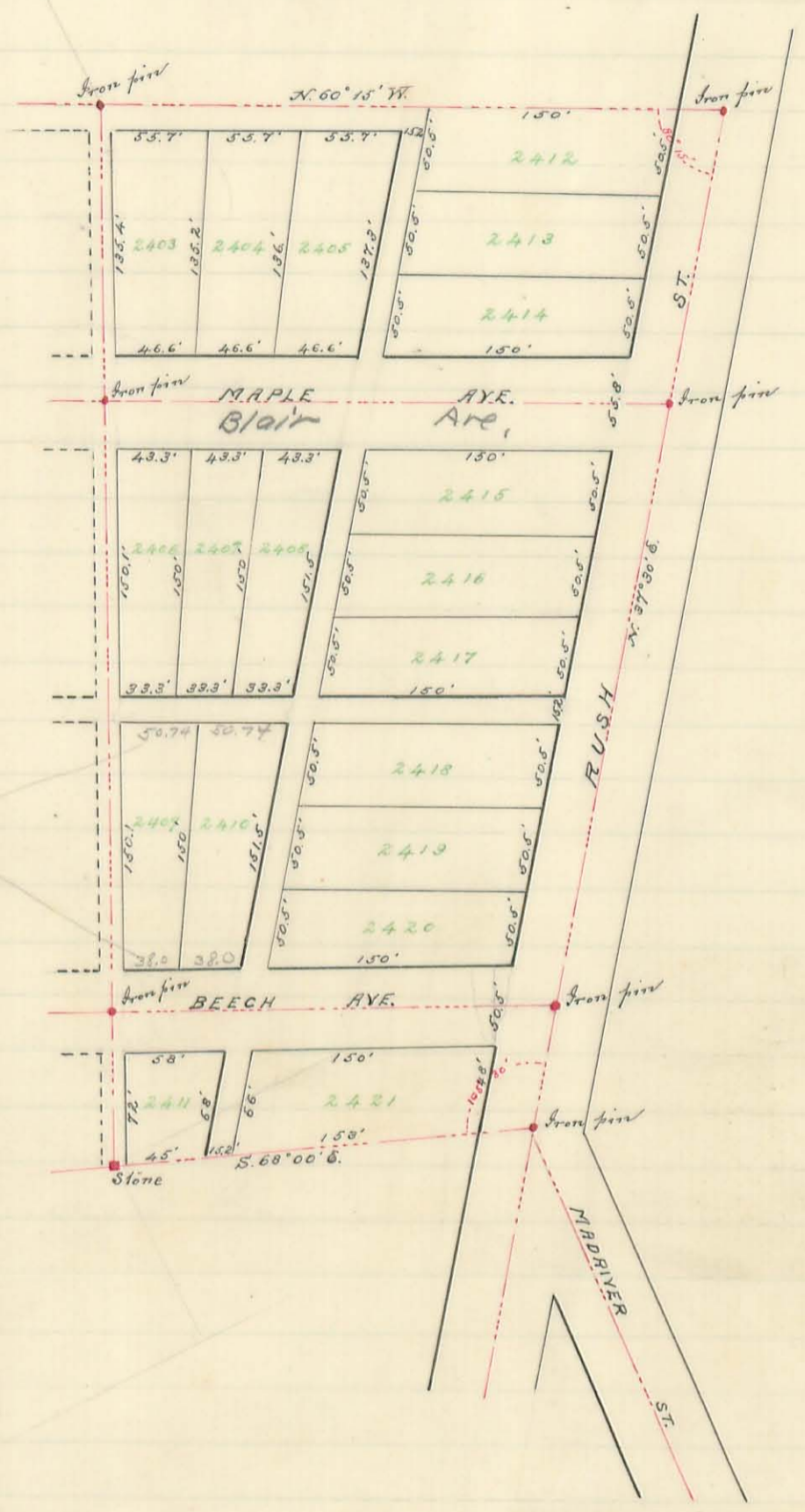
The original of this page is blank or missing.

468

INDEXED ON MAP

PLAT OF
FAIRVIEW
ADDITION
TO
Bellefontaine, Ohio

Calculated by proportion
lots divided as above lots



Surveyors Certificate:

I the undersigned Surveyor do hereby certify that the Fairview Addition to Bellefontaine, Ohio, is a subdivision of a 4⁷/₁₀₀ acre tract of land situate in the city of Bellefontaine, Ohio. Said Survey is Monumented as shown on above plat, which is a correct representation of the land as plotted for the owners J.M. and E.M. Hamilton.

Cham-men } James F. Fisher
 } Chas. A. Moore

Willard H. Ginn
Surv. Logan Co.

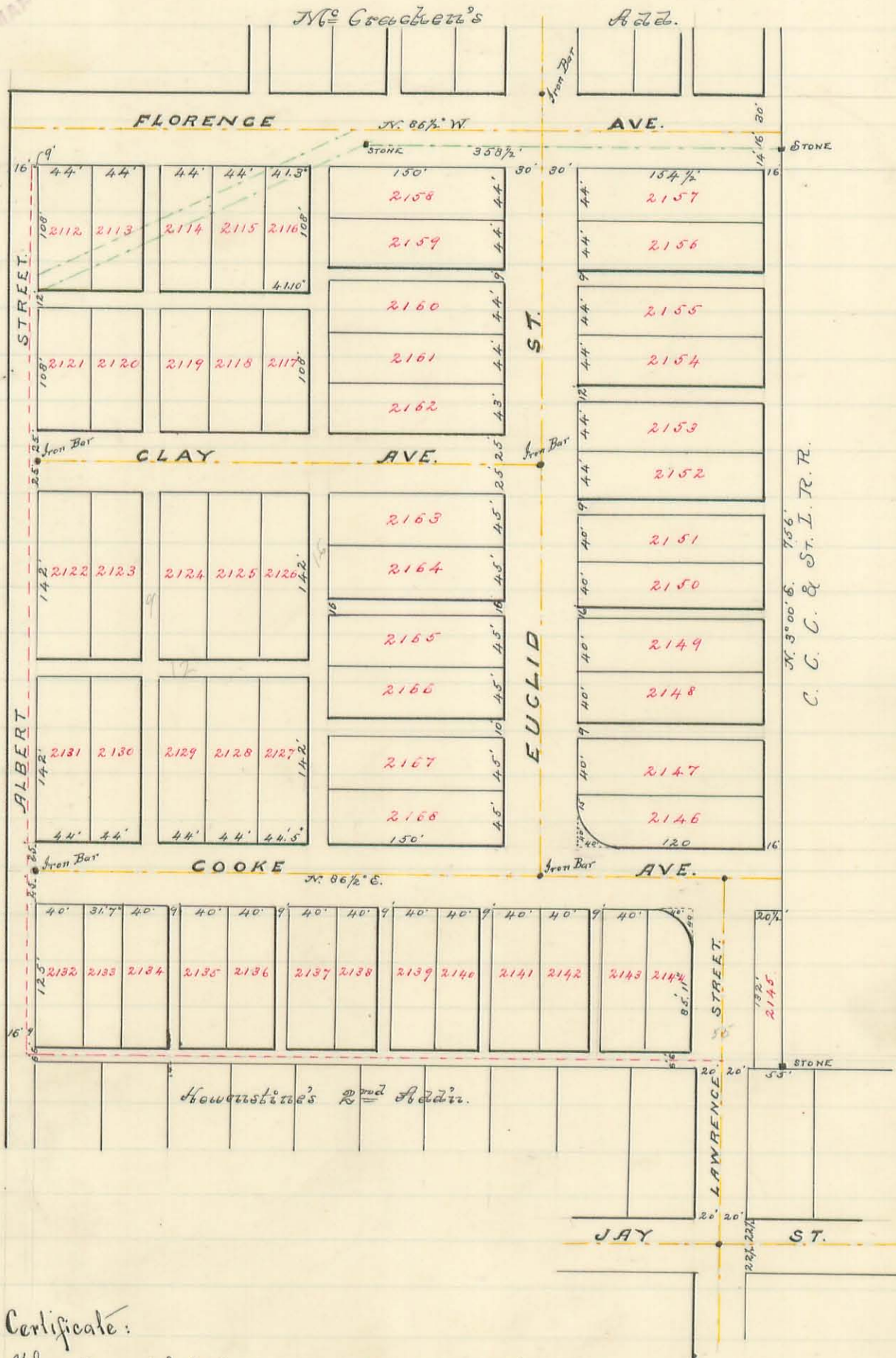
Surveyed. April 1899-

The original of this page is blank or missing.

Plat of McCracken and Cooke's Addition to Bellefontaine, Ohio.

Sec. 35. T. 4. R. 14.

(469)



Surveyor's Certificate:

The above plat is a correct representation of lands surveyed by me, and laid out in January 1894 for the owners, Jas. E. McCracken, Thos. J. Cooke and Orrin L. D. Cooke, same being in Sec 35. Town 4. Range 14 Lake Township, Logan Co. Ohio, round iron bars about 2 feet long were driven where noted on plat.

H. C. Moore, Surveyor.

W. A. Ginn, County Surveyor.

The original of this page is blank or missing.

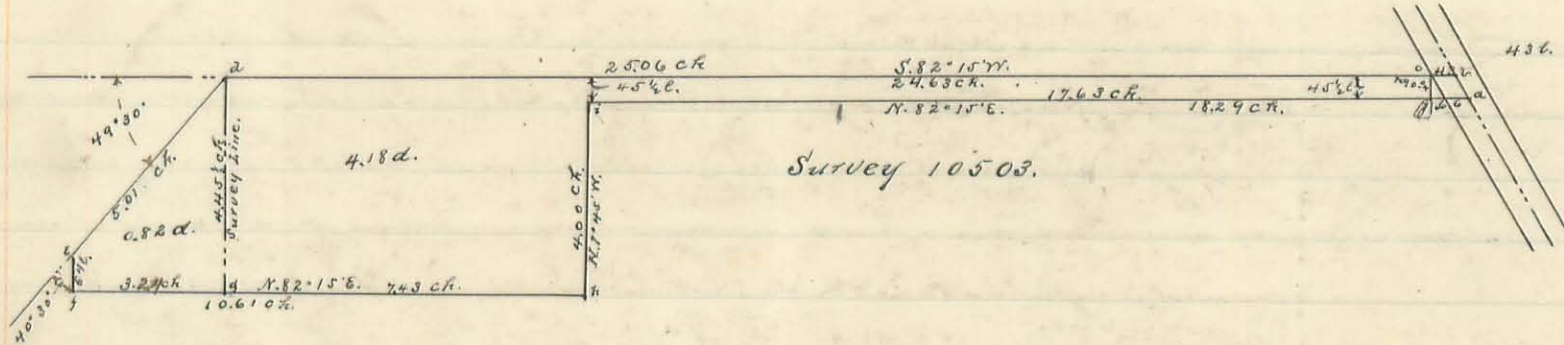
Survey for J.K. Elder

iii

V.M. Surveys - 10503 + $\left. \begin{matrix} 12311 \\ 12878 \end{matrix} \right\}$

(470)
INDEXED ON MAP

$\left. \begin{matrix} 12311 \\ 12878 \end{matrix} \right\}$



- c - Lime Stone monument. 6" x 8" x 24". Lane c-j - is 45 ft. wide throughout.
- d - Lime Stone monument. 6" x 8" x 24". f-g - is 3.18 chains.
- e - Lime Stone monument. 6" x 8" x 24". g-h - is 7.43 chains.
- f - Lime Stone monument. 6" x 8" x 24". points d + h in center Huntsville + Roundhead Pike.
- h - Lime Stone monument. 6" x 8" x 24".
- i - Lime Stone monument. 6" x 8" x 24".
- j - Lime Stone monument. 6" x 8" x 24".

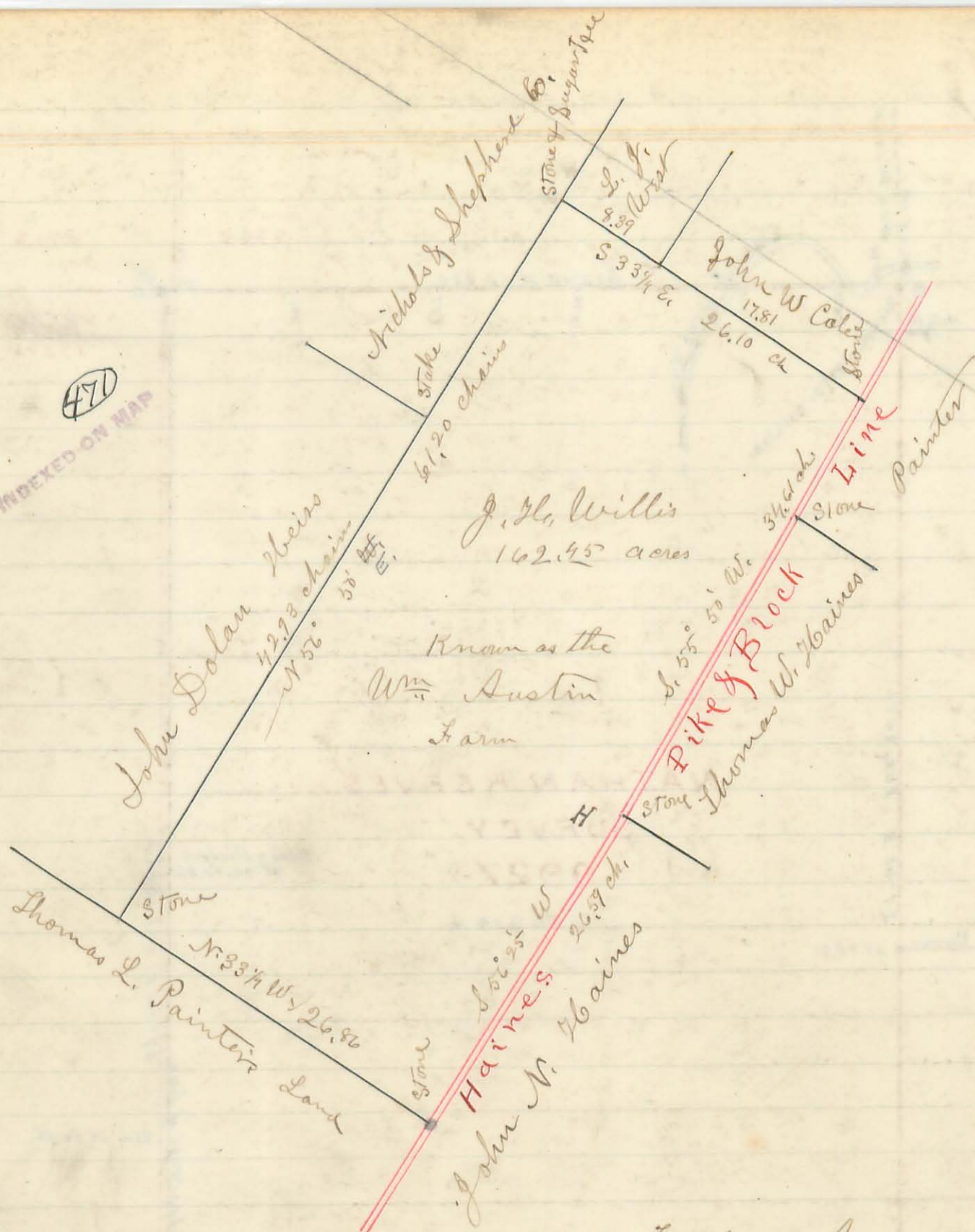
Willbur A. Ginn County Surveyor.

January - 1900.

Arthur Renick }
Jess Bennett } Chainmen.

Scale 4 chains to 1 inch.

INDEXED ON MAP



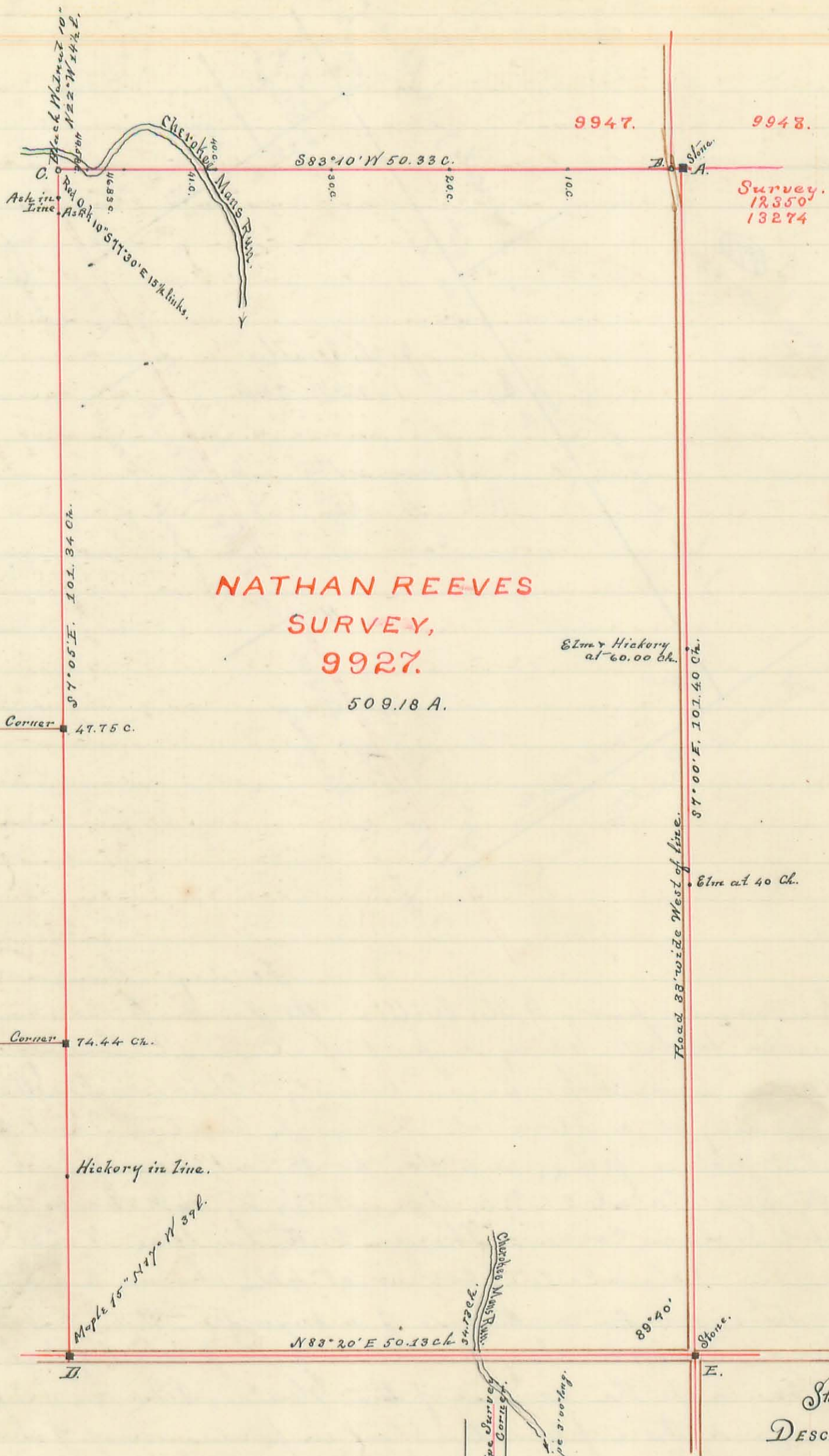
Friday August 24 1900

Surveyed for J. H. Willis the farm known as the "Wm. Austin farm" being a part of O. V. M. Survey No. 7117, in Lane Township, Logan County, Ohio, as per the above Plat, Beginning at a Stone at Thomas L. Painter's most Eastern corner, in the Haines pike, and the South East line of said Survey, thence with said Painter's N. E. line N 33 1/4 W, 26.86 chains to a Stone at John Dolan's corner; thence with his line N 56° 50' E, 61.20 chains, passing Dolan's Eastern corner at 42.23 chains, to a Stone between the roots and on the north side of a sugar tree three feet in diameter, thence S. 33 1/4 E, along the lines of L. J. West & John W. Coles lands 26.10 chains to the center of the Haines Pike and in said Survey line, and there planted a Stone in presence of John W. Cole, J. H. Willis, Wilber Reams, John Hudson, C. M. Hudson Dolan West and others. Thence with said Survey line and pike S. 55° 50' W, 34.61 chains to a Stone, corner between Thos. W. Haines & John N. Haines; thence again with said Survey line and pike S. 56° 25' W, 26.57 chains to the place of beginning, Containing 162.45 acres. This survey was made for the purpose of establishing the lines and corners, and obtaining the exact area of the said "Austin farm", for J. H. Willis.

John Hudson }
 Wilber Reams } C.B.

By H. C. Moose, Deputy Co. Surveyor
 Wilber A. Ginn Co. Surveyors
 Logan Co. Ohio

INDEXED ON MAP



**NATHAN REEVES
SURVEY,
9927.**

509.18 A.

Stone.
DESCRIPTION.

14"
N.E. Cor.
+
Survey
9927
14"

DETAIL
of
CORNER
AND
Witnesses for it.

M. H. McCormack Survey made Oct 20-1881.
W. A. Ginn Monumenting a Nov-6-1895.

(See page 227)

Bellefontaine Ohio November 26th 1895.
Office of County Surveyor.

I, the undersigned surveyor for the County of Logan, State of Ohio, hereby certifies to the Re-monumenting & marking of the N.E. Cor of Nathan Reeves Survey 9927. The N.W. Corner of J. Galloway Survey 12350 and 13274. Also The survey Corner between Geo Clark Survey 9948 S.W. Corner, and George Clark Survey 9947 S.E. Corner. N.E. Cor. V.M. 9927

Description. On Examination upon the ground I found the hickory named in original Survey notes Standing but dead, The black Oak dead, (now down) almost decayed, a second hickory taken later, dead and decayed. after taking the angles of the witnesses I made search for the corner and found 10 inches under the surface a stake of Red Oak 12 inches of the point of which was well preserved, measured 16 1/2 feet west and found stake as described in the Road Survey, made to establish the Road on the west side of Survey line 9927. by S.A. Buchanan Co Surveyor.

Monumented the point first described with a Bellefontaine quarry lime Stone, 14 x 14 inches square on top and 30" deep planted about 1 foot below the surface of the ground. Witnessed by (1.) Water Elm 36 I.d. S 60° 45' N 44 feet and 2 inches (N° 2) Water Elm 40 I.d. S 1° 28' E. 58 feet and 8 inches also by (N° 3) Burr Oak 2 I.d. S 68° 00' E 14 feet and 9 inches. Iron pipe on N. line 3 feet long. 1 1/2 inches in diameter. Ran the East line of Survey 9927. from it I turned the Angle 90° 10' from E to C. and established corner between Surveys 9947 & 9948 Eighty (80) links distant on line, A. C. Monumented with an Iron pipe fifty eight (58) inches long, witnessed by a Water Elm 36 I.d. South two (2) feet and seven (7) inches all measurements of witnesses are made to the centre of the three notches.

A. B. S 83° 10' N. 80 links passing Iron pipe at 16 1/2 feet, and ending 2 ft 7 in north of 36" Water Elm. Angle A.E.C. 90° 10'

A. C. S 83° 16' N. 50.33 ch passing hickory 6 I.d. N 20° E at 10 ch Red Oak 12 I.d. S. 12° E at 20. Ch. Ironwood 6 I.d. S 36 links at 30 ch. Sycamore line tree at 33.93 ch. Pignut hickory 14 I.d. S 16 links at 40. Ch crossing Cherokee Mans Run at 41 chains. Entering the run at 46.83 ch and leaving it at about 49.70 ch thence to corner with Red Oak 10 I.d. S 77° 30' E 15 1/2 links and a black walnut 10 I.d. N 22° W 14 1/2 links. The original corner 2 buckets and

C. D. small ash in run. Thence S 7° 05' East 101.34 ch. passing line tree 1 1/2, 2 1/2. & 89 ch. passing ables corners - 1 at 47.75 ch 1 at 74.44 ch. Thence to corner at 101.34 ch. This Witnessed by Maple 15 I.d. N 17° W 39 l. Original corner Swamp Ash, Thence with road

D. E. N 83° 20' E 50.13 ch to a stone corner, crossing same run as

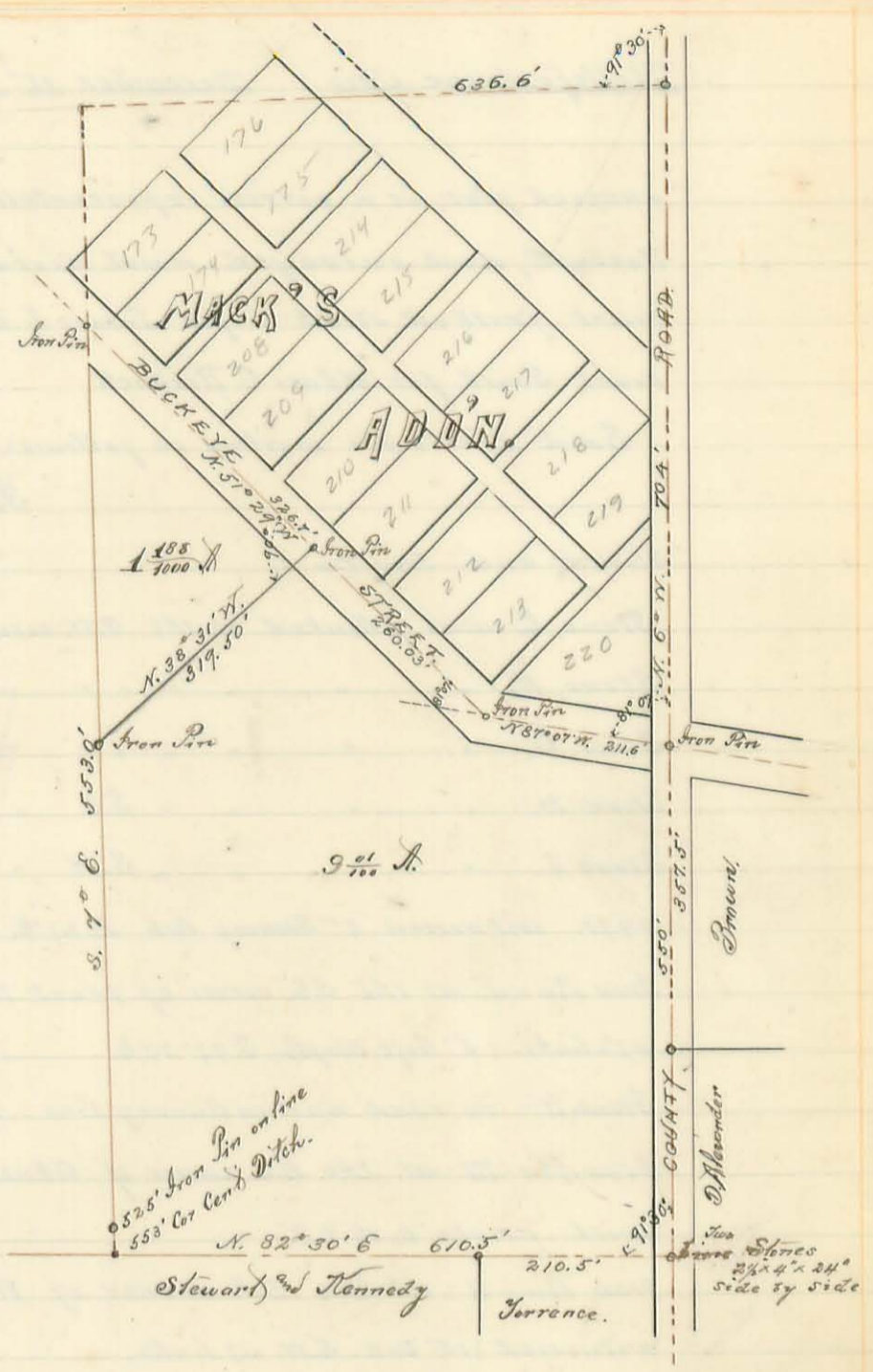
E. A. before described at 34.13 ch. Thence N 7° 00' W 101.40 ch passing Elm line tree at 40 ch Elm & Hickory at 60 ch to the N.E. Cor and place of beginning. The Above Survey Made by M.H. McCormack Co Survey Logan Co O. Ex the N.E. Corner as described, monumented and witnessed by me in the presence of Thomas-Dunn, Davie Hughes G.C. Morris Ezra Kulon. W^m Antim, Willbur J. Ginn Co. Surveyor.

The original of this page is blank or missing.

(473)

INDEXED ON MAP

Part of
Survey- 9972
Belle Centre, Logan Co. Ohio



Bellefontaine, O. Co. Surveyors Office 1898.

The above is a correct representation of a parcel of land as surveyed by me and monumented as shown on above plat,
Wilbur A Ginn
Co. Surveyor

Bellefontaine Ohio: December 11th 1899.

I, the undersigned Surveyor, do certify that the annexed plat is a correct representation of a tract of land, formerly belonging to Isaac Roebuck, and surveyed and divided into three equal tracts of 55.05 acres each; the tract farthest North is for James L. Roebuck, the center tract for William D. Roebuck and the tract South for Abner C. Roebuck.

Said tracts are marked as follows:

Stone C. was planted by me and placed in line with Stone B,

Stone P, and Iron Pin O.

Stone, E. was planted at the S.W. corner of the N. tract.

Stone, F. " " " " " " " " " " Center " "

Stone, G. " " " " " " " " S. " and in Survey Line.

Stone H. " " " " S.E. " of Survey 9987 + the S.W. corner of 9988.

Stone I. " " " " S.W. " short strip of land lying south of 9988 and in Survey 9971. witnessed 8" Swamp Ash N. 27° E. 26 links; 10" Hickory S.E. 23¹/₄ links.

Iron Pin - J. at the S.E. corner of tract to South and in County Road; witness 5" Soft Maple N. 73° 30' E. 47¹/₂ links; 5" Soft Maple S. 77° 30' E.

Stone K - in road and in Survey Line - in line with Stones G, H, and L

Iron Pin - M - at the N.E. corner of Abner Roebuck's land; S.E. corner of Wm Roebuck's land + in line with points O, N, + K.

Iron Pin - N - at the N.E. corner of Wm Roebuck's land and S.E. corner of Jas. L. Roebuck's land. witnessed 15" Oak S.W. 117 links.

Iron Pin - O - at the N.E. corner of Jas. L. Roebuck's Land and S.E. corner of Marion King's Land. and in line with points B, C + P.

Stone - P - in line with points O, C + B. and in Survey Line between Surveys 9987 and 9986.

Wilbur A. Ginn,
County Surveyor.

Wm. Roebuck. } Chainmen,
Clarence Watson. }

Clarence Witter, } Marker & Flagman.

9971 16.74 a
9987 100.00 a,
9988 55.98 a,

16672

474

INDEXED ON MAP

Survey and Division of the Isaac Roebuck Land.

in

Richland Township, Logan County Ohio.

December, 1899.

