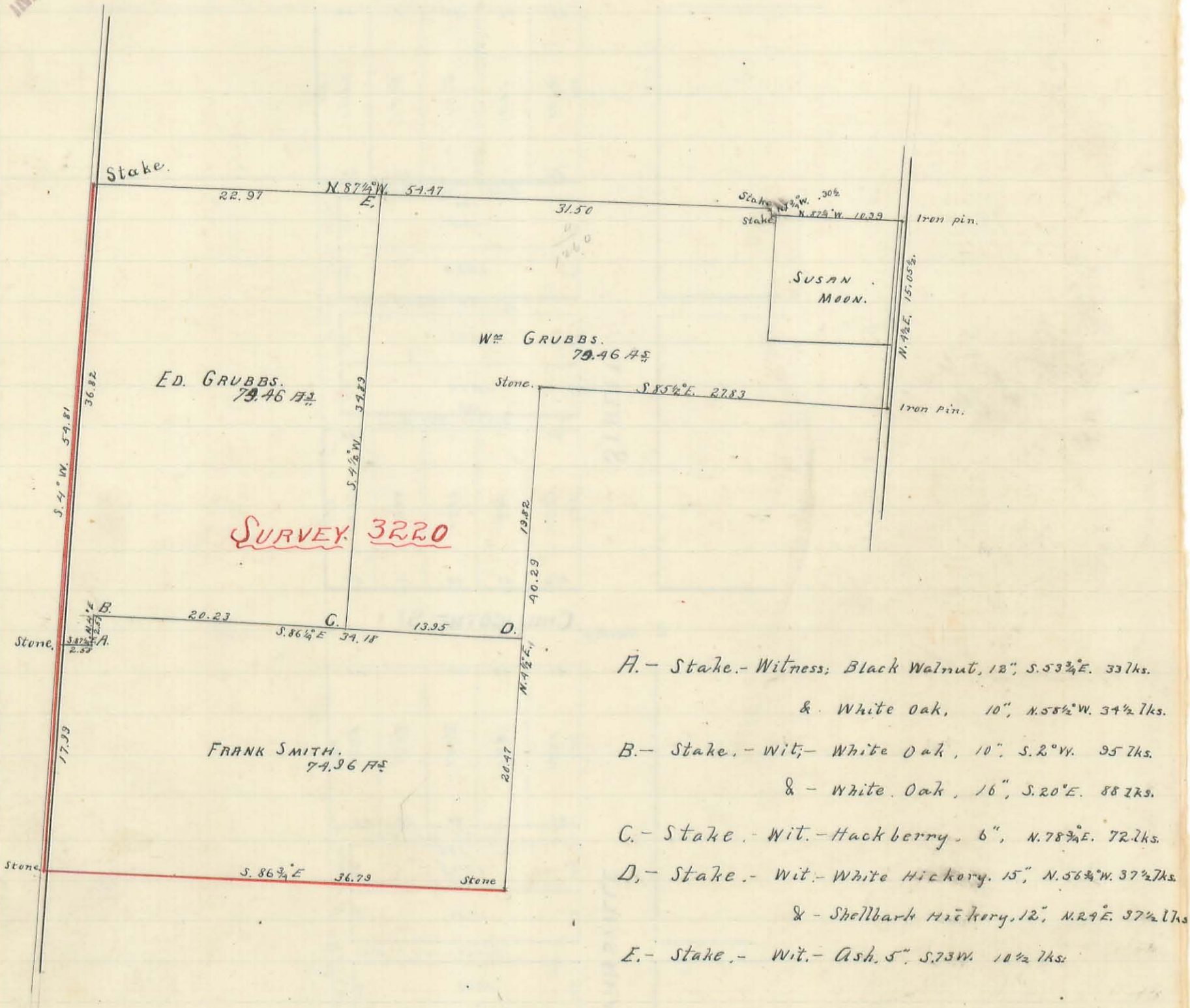


Plat of part of Virginia Military Survey No 3220. Jefferson Tp.
Surveyed for Jesse Grubbs. May 13, June 18, July 17, 1890

445

INDEXED ON MAP



Surveyed as shown above
Jas. C. Warden
County Surveyor

Plat of Part of Military Survey No. 9947 in Richland Sp.
Surveyed April 20th 1891 for Edward Bailey.

(446)

INDEXED ON MAP

(N.)
Reservoir
50
42 1/2
20 feet A. Sugar 20 in. diameter marked X

400 28 3/8 feet B. Sugar 18 in. di. Marked X

Lands of Harrison Spencer

Lands of Ursula Bailey (E.)

300 28 feet C. Hickory 12 in. di. Marked X

200 13 1/2 ft. D. Elm 22 in. di. Marked X

100 16 1/2 ft. E. Maple 14 in. di. Marked X

Blax mark on Elm
N 5 1/2 W. 36 3/4 ft.

1333.20
80 8/10 Rods

Huntsville & Reservoir improved Road

	(S)	
47 ch	A = Sugar tree 20 inches diameter	Marked thus X 20 feet East of line
40 "	B = " " 18 "	" " " 28 3/8 " " " "
30 "	C = Hickory " 12 "	" " " 28 " " " "
20 "	D = Elm " 22 "	" " " 13 1/2 " " " "
10 "	E = Maple " 14 "	" " " 16 1/3 " " " "

Part of West line of Survey No. 9947

Corners are marked as follows

- a. large Stone at ^{the N.W. corner of G. W. S. Sur. No 9947 and} N.W. cor. of H. Spencer's land, on Block line = 16 inch Sugar tree N. 34 E. 29 1/2 links
- b. Stake, in Block line 26 in. W. Oak stump S. 84 W 39 2/3 links; 23 in. Ash stump S. 12 1/2 W. 18 links; a 23 in. ash stump N 45 1/2 E. 32 links; a 24 in. ash stump N 34 1/4 E. 42 1/2 links, and a Green Blue ash 12 in. N 33 1/4 W. 9 2/3 links
- The stake is in same range of marked trees S. 57 1/2 W in Durris line.
- d each a Stake in Middle of Reservoir Pike, and d in R. G. Durris N. line
- e a 5 inch Elm N. 7 10' E 37 links; a 4 inch Pine S. 23 24 W. 51 1/2; Cor ^{1/2 brick} stone line p. 19 in long 14 W. + 8 thick
- f a Stone + 1/2 brick. Cottonwood 7 in N. 17 W. 14 1/4 links; a 6 in double sweet elm S. 6 W. 41 1/2 link
- g. a Small gray Rock + 1/2 brick; a 14 in B. Oak N 37 20' W. 48 links; a Cottonwood S 33 3/4 W. 31 1/2 links
- h a triangular gray stone + 3 half brick: 16 in Gray Ash S 83 3/4 E. 25 1/3 links; a 10 inch Sycamore N 9 1/4 E. 20 2/3 links; and a 10 inch Sycamore N. 69 1/4 W. 20 links.
- i a large Gray Rock: a Sugar 10 in. N. 2 1/2 W. 20 links; a 10 in S. 67 1/4 W 33 links; and a 6 in Sycamore S. 35 E 44 1/2 links.
- J a large rock in Reservoir line; a 15 in White Hickory S 57 1/4 E. 8 1/2 links; a 12 in B. Walnut N 72 E. 35 links; & a 10 in. B. Walnut S. 76 10 W. 112 1/4 links
- K a strong stake in Reservoir line & Block line, 105 links north of the stone at "a"
- O B. Walnut Stake in the line 21 links north.
- X Stake: Double Sour Elm each 10 in dia. N. 30 40 W. 57 1/2 links; a 6 inch B. Walnut S. 56 1/2 W. 92 1/2 links; and a 10 inch B. Walnut S. 16 20 E. 56 links

Recorded August 26th 1892. Done By Henry C. Moore, Sept. Co. Sur

Copy of Notice of Survey, so writ:

To Samantha Bailey Administrator of the estate of Benjamin Bailey. You will take notice that the County Surveyor will be on the premises, on the 28th day of June A. D. 1892; at 10 o'clock a. m. to make a survey to ascertain the lines of the lands of Benjamin Bailey's heirs, Edward Bailey's heirs, John Myers, Cynthia Gillenwater and Harrison Spencer in Survey No 9925, 9946 and 10141 this 26 day of May 1892.

Washington Township Logan County Ohio June 28th A. D. 1892

I John Myers, do hereby solemnly swear that I served a copy of the above notice on Samantha Bailey, Benjamin Bailey, Cynthia A. Gillenwater, and Harrison Spencer, by leaving said copy at their places of residence on the 26th day of May A. D. 1892. being more than 30 days ago.

signed John Myers

Subscribed and sworn to before me, a Notary Public in and for Logan County Ohio on the 28th day of June A. D. 1892

Henry C. Moore, Notary Public and Sept. Co. Sur

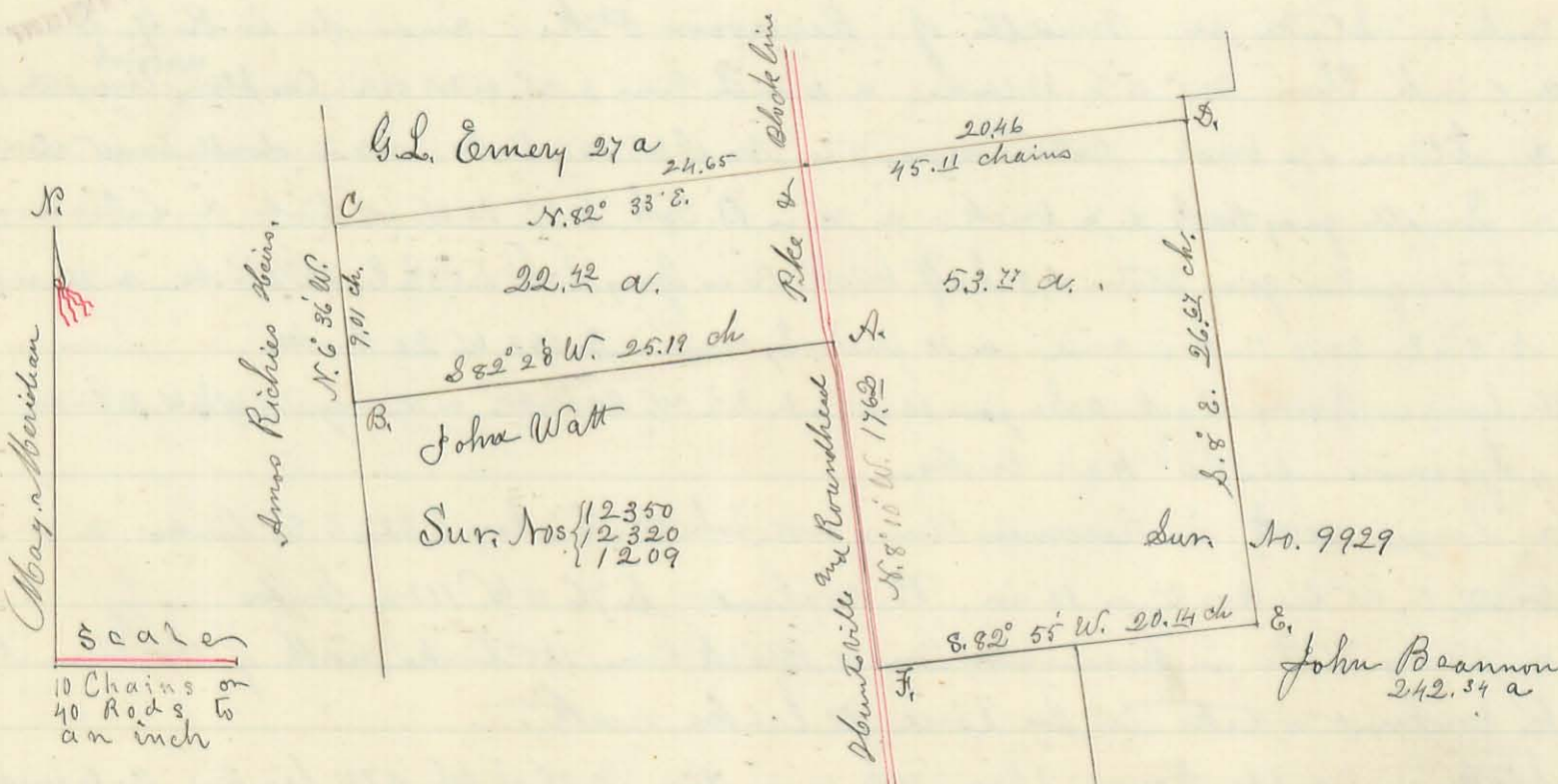
I commenced the foregoing survey at 10 o'clock A. M. June 28th 1892 in presence of John Myers, William Bailey, Benjamin Bailey, Moriel Gillenwater, George Bailey, William Clark, (who represented Harrison Spencer) and Samuel Dray and Thomas A. Smith. The last two, who were chain carriers throughout - the whole survey were by me first duly sworn to faithfully and impartially discharge the duties of Chain Carrier in this survey according to law and the best of their skill and ability.

The following named persons were present at the planting and marking of the several corners. To wit: The chain men, John Myers and George Bailey at all the corners. In addition to these, at the corners marked e, f,

g and h, Moriel Gillenwater was present, and in addition to all the foregoing named witnesses, James Gillenwater and Mrs. Synthia A. Gillenwater were present at the corners i. and j.

Witness my hand 26th day of August A.D. 1892
Henry C. Moore, Deft. Co. Sur. L. Co. O.

11 (448)



Surveyed on the 17th day of October A.D. 1892, for John M. Johnson and Elizabeth J. Johnson, as is represented by the above Plat, in W^o Arthur Township Logan County, Ohio, for the purpose of establishing the lines and corners thereof more permanently, and marking the corners thereof, and obtaining the true area. Commencing at a large gray Stone, or Boulder, heretofore planted for the corner at "A." in the line between the said surveys, and at the east side of an angular part of the Bountsville and Roundhead Pike, thence run to the right, as indicated by the letters and figures on said Plat.

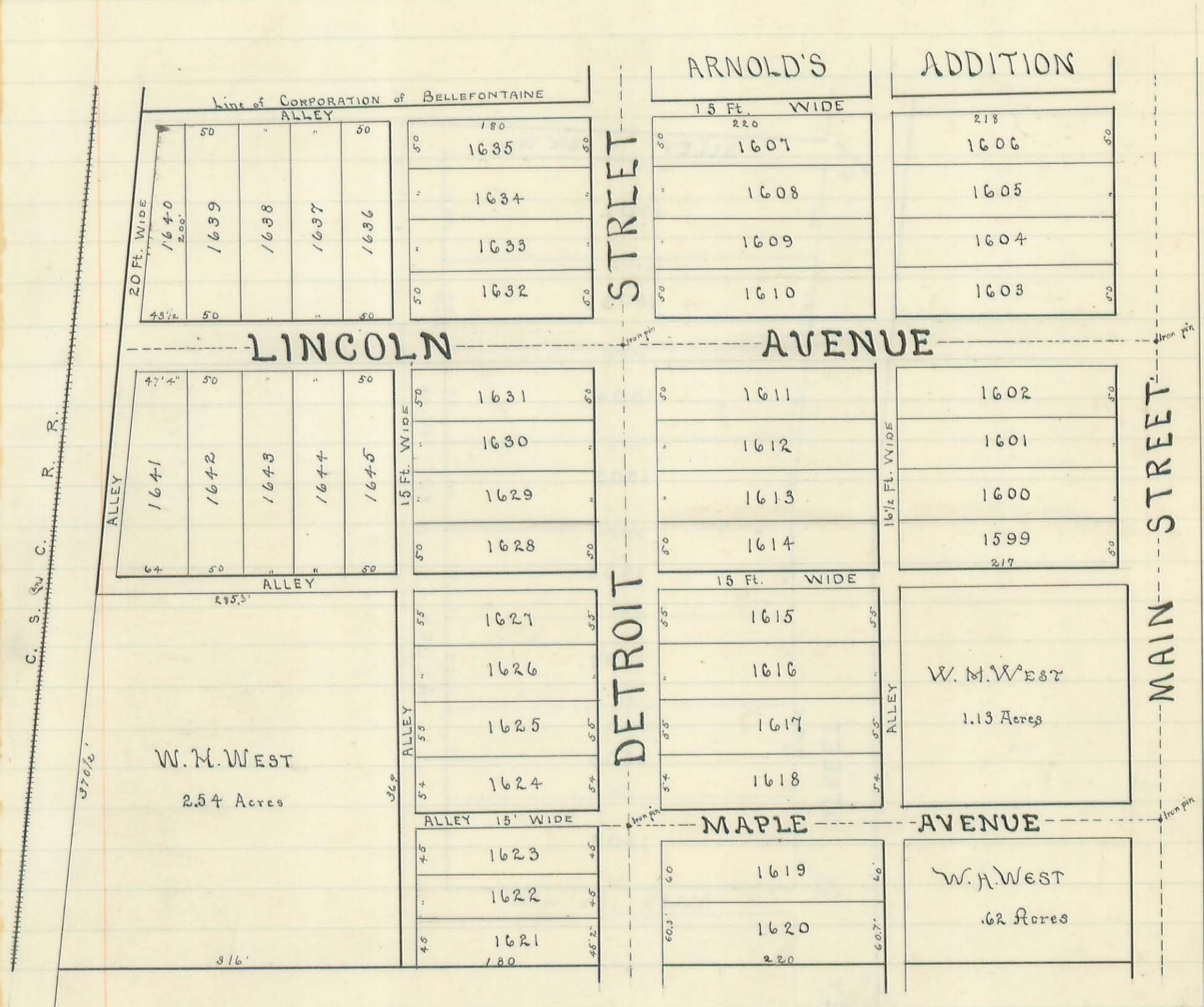
The monuments at the various corners are as follows.

St. A. The foregoing large gray Stone. — St. B. — a large flat quarry lime Stone, witness = B. Ash 16 in. N. 62° W. 6 1/4 links — St. C. — a large quarry lime Stone, in a field, 26 1/4 links west of the junction of 2 fences, and from which a Red Oak 30 inches in diameter bears N. 84 1/2° E. about 130 links. — St. D and E each, a large quarry lime Stone. — St. F. — the corner is in the center of the Pike and in the bridge over the Cook Ditch, near the north side, and from which a large quarry lime Stone is planted in the line east 100 links (or 4 Rods) and a Cottonwood Tree 10. in. dia bears S. 38° 35' W. 94 links — Notes — Each of the above lime Stones are marked on the top thus "+", for the exact corner point. The line from A. to B. runs just north, but near an old rail fence: From B. to C. is an extension of an old rail fence from the south, from the Lewistown Reservoir Pike. The line from C. to D. follows the center of an old but substantial rail fence. The lines from D. to E. and from E. to F. follow very old fence lines. From E. to near A. the center of the C. & R. Pike & Black Line. The lime Stones were all planted in presence of the chainmen, J. D. Fullerton, Robert Fullerton and myself. The one at C. (N.W. corner) Charles Richie and William Richie were also present, and approved the place and planting as correct. The area of the west part, is computed from the Stone at "A." by a right line line to the center of the Pike at the north line, The East part is likewise, from the same line. (which is 8.88 chains)

A. B. Keller, W. J. W. Lease, Chainmen (Sworn) H. C. Moore, Deputy, Town

449

INDEXED ON MAP



MAP OF

SOUTH BELLEFONTAINE

By W^m. H. WEST.

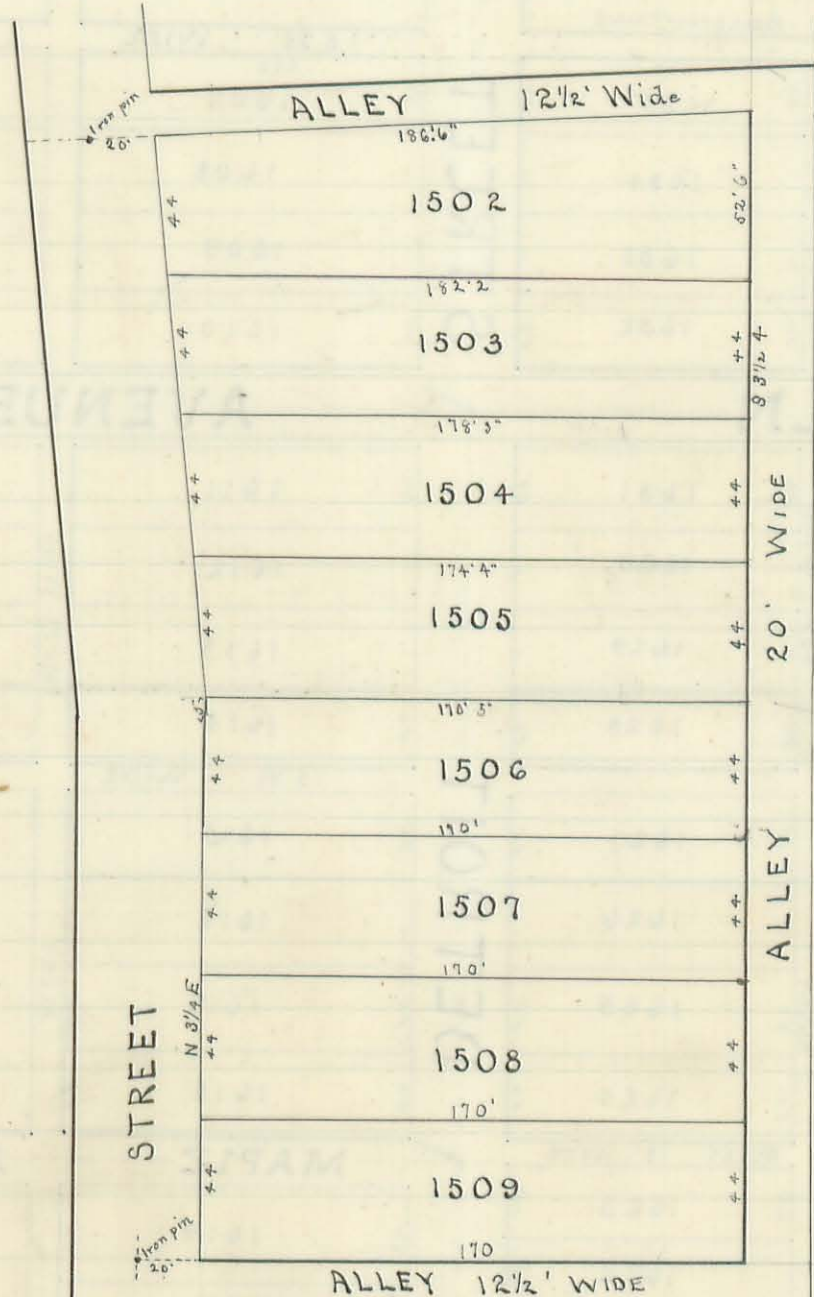
Surveyors Certificate—
 I, the undersigned surveyor, do hereby certify that the annexed plat is a correct representation of South Bellefontaine, being part of Section 10 34, T. 4. R. 14. as by me surveyed May 12-17-1892 at request of the proprietor H. H. West
 James C. Houders
 Co. Surveyor Logan Co. O.

W. Scott's add

60' feet

(450)

INDEXED ON MAP



STANLEY STREET

20' WIDE

ALLEY

STANLEY

220 feet

Map of

W. Scott's Addition

to

Bellefontaine

COLUMBUS ST.

Surveyor's Certificate

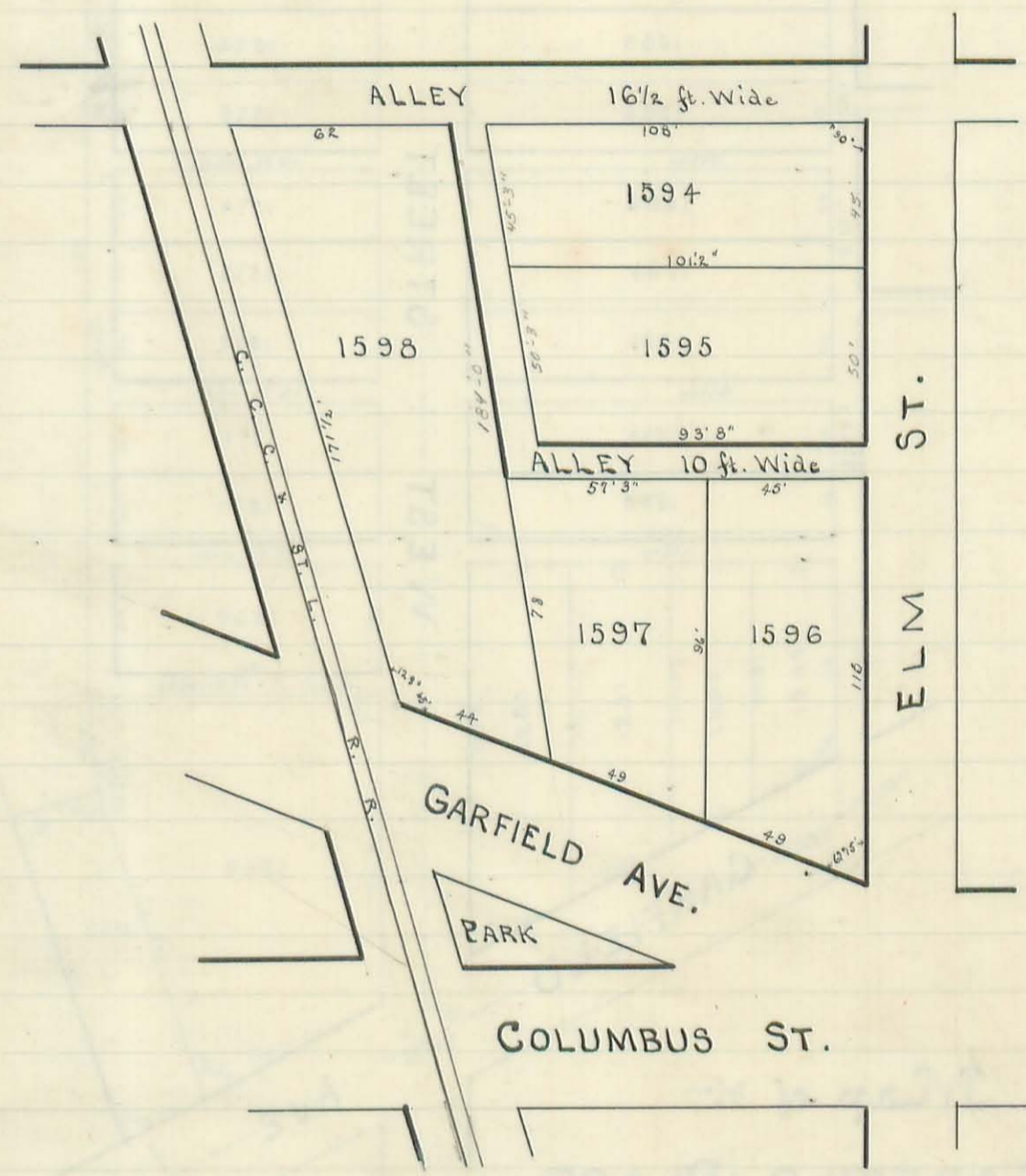
I, the undersigned Surveyor, do hereby certify that the annexed plat is a correct representation of W. Scott's Addition to Bellefontaine this being part of Virginia Military Survey No. 4990, as by me surveyed Dec. 19, 1891 at request of the Proprietor W. Scott

James C. Houdus
Surveyor Logan Co.

(451)

INDEXED ON MAP

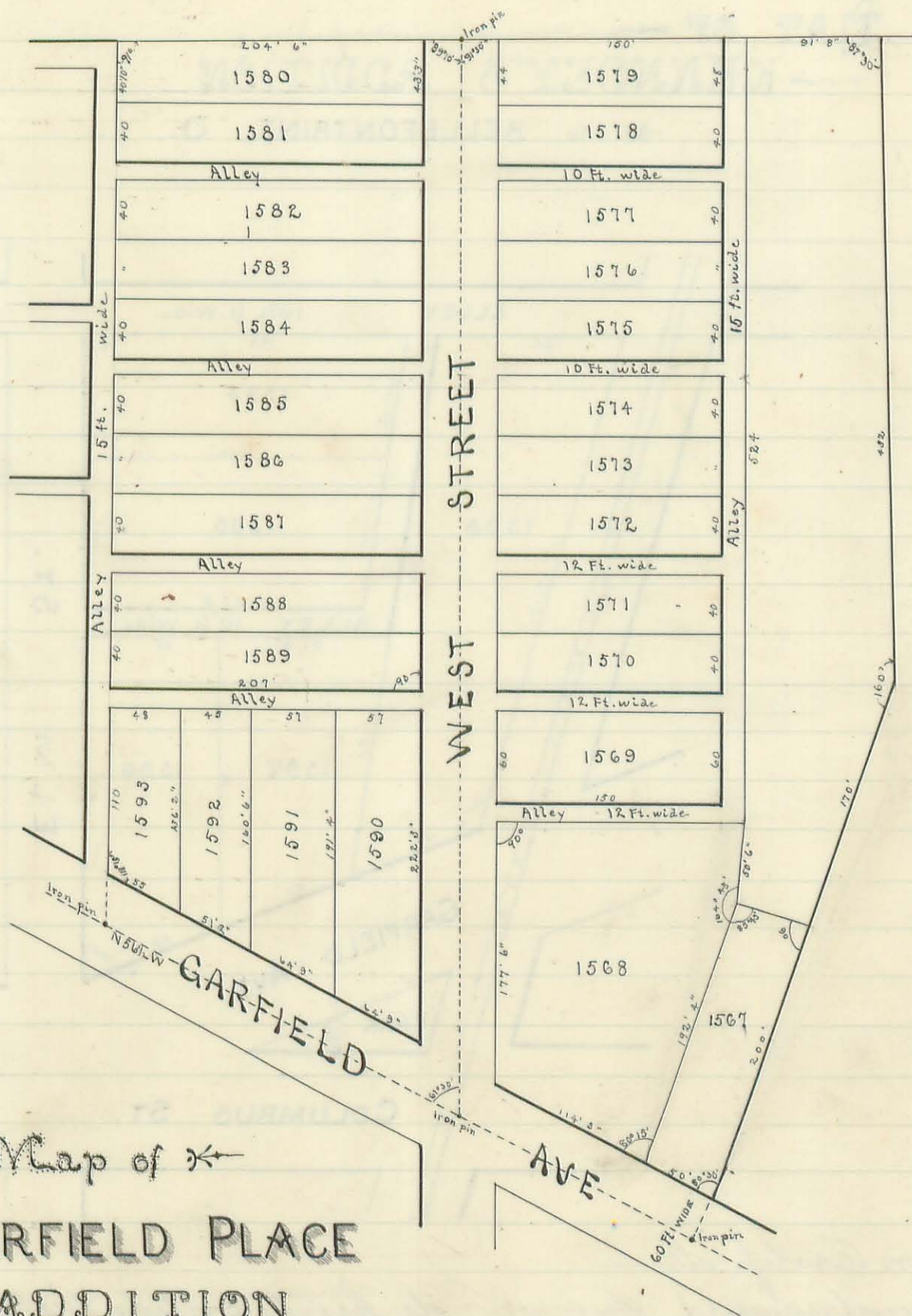
PLAT OF
KENNEDY'S ADDITION
To BELLEFONTAINE, O.



Surveyor's Certificate —
 I, the undersigned Surveyor, do hereby certify that the annexed plat
 is a correct representation of Kennedy's Addition to Bellefontaine, O.
 being part of Section No. 35 - T. 4, R. 14. as surveyed by me, May 9 -
 1896 at request of the proprietor Robt. P. Kennedy
 James C. Houdick
 Surveyor Logan Co. O.

452

INDEXED ON MAP

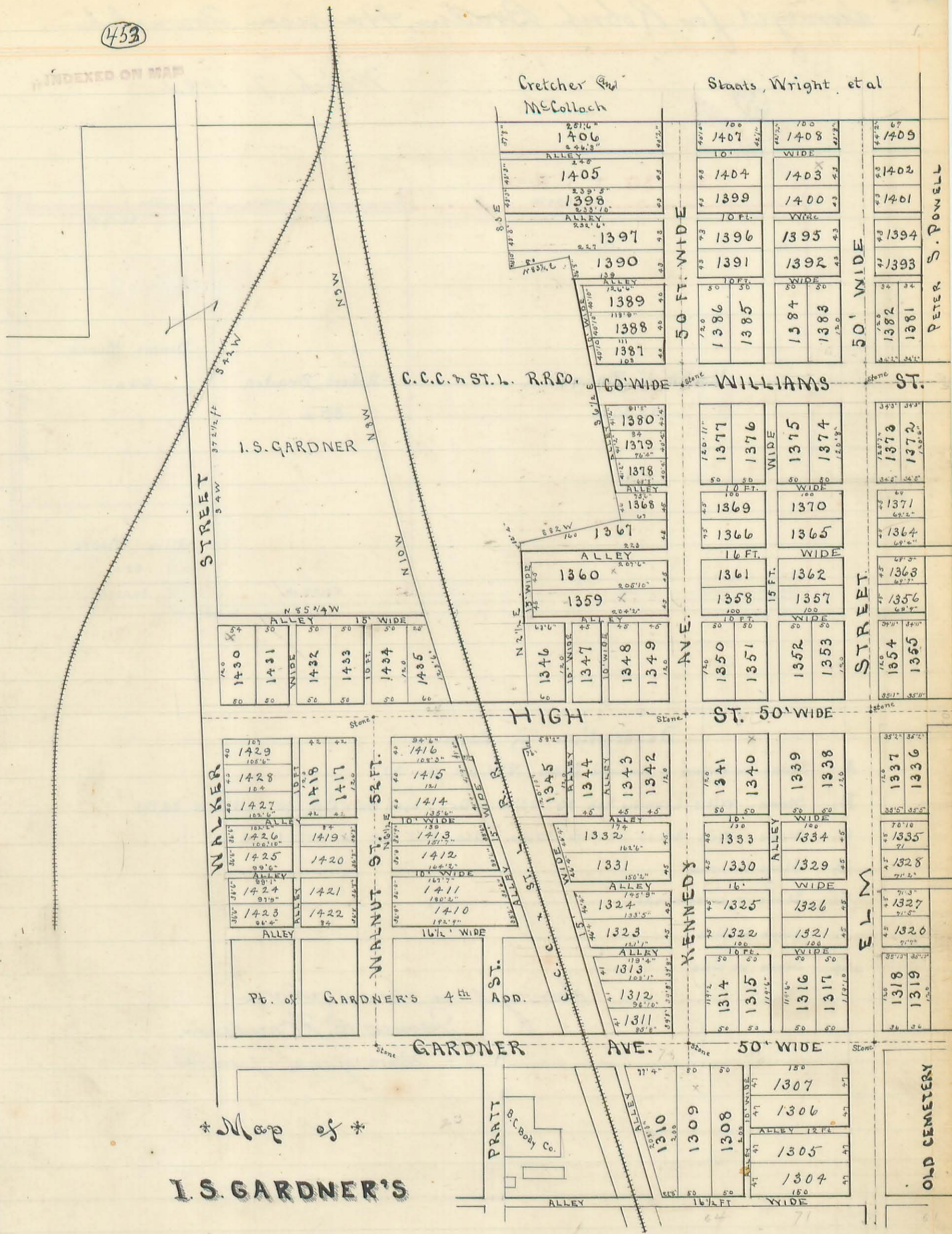


Map of ↖
**GARFIELD PLACE
 ADDITION**
 TO
BELLEFONTAINE

Surveyor's Certificate
 I, the undersigned surveyor, do hereby certify that the annexed plat is a correct representation of Garfield Place Addition to Bellefontaine, Ohio being part of Section No. 35, T. 4. R. 14, as surveyed by me, April 5-11-25 1892 at request of the proprietors Coltons and Short.
 James C. Houdue
 Surveyor Logan Co. O.

(453)

INDEXED ON MAP



* Map of *

I. S. GARDNER'S

5th ADDITION

BELLEFONTAINE

0110

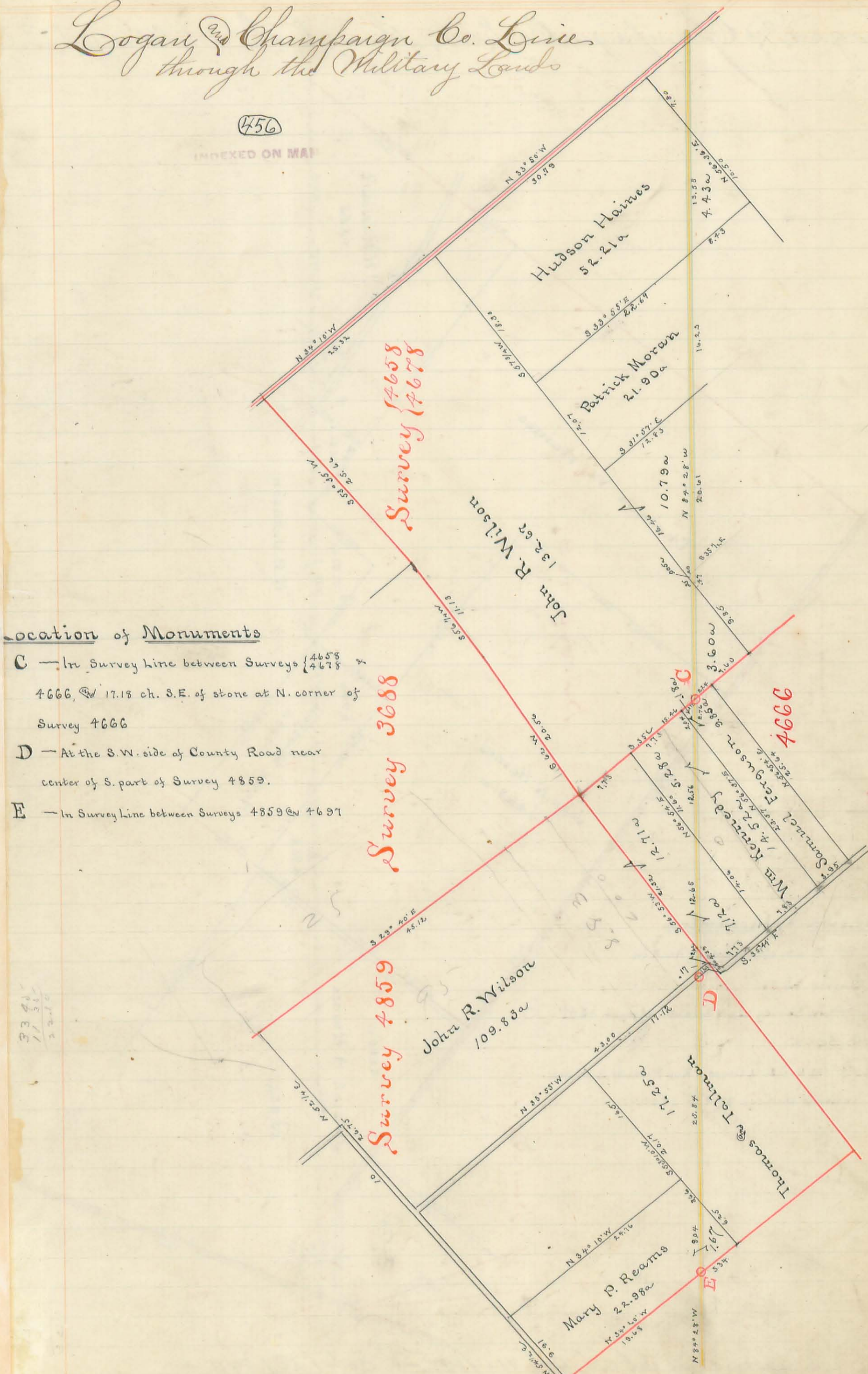
Surveyor's Certificate —
 I, the undersigned Surveyor, do hereby certify that the annexed plat is a correct representation of Gardner's 5th Addition to Bellefontaine O. being part of Section No. 35, T. 4. R. 14, as surveyed by me, Mar. 26-31, April 1 to May 1, 1891, at request of the proprietor D. S. Gardner.
 James C. Hendrix
 Surveyor Logan Co. O.

The original of this page is blank or missing.

Logan and Champaign Co. Line through the Military Lands

(456)

INDEXED ON MAP



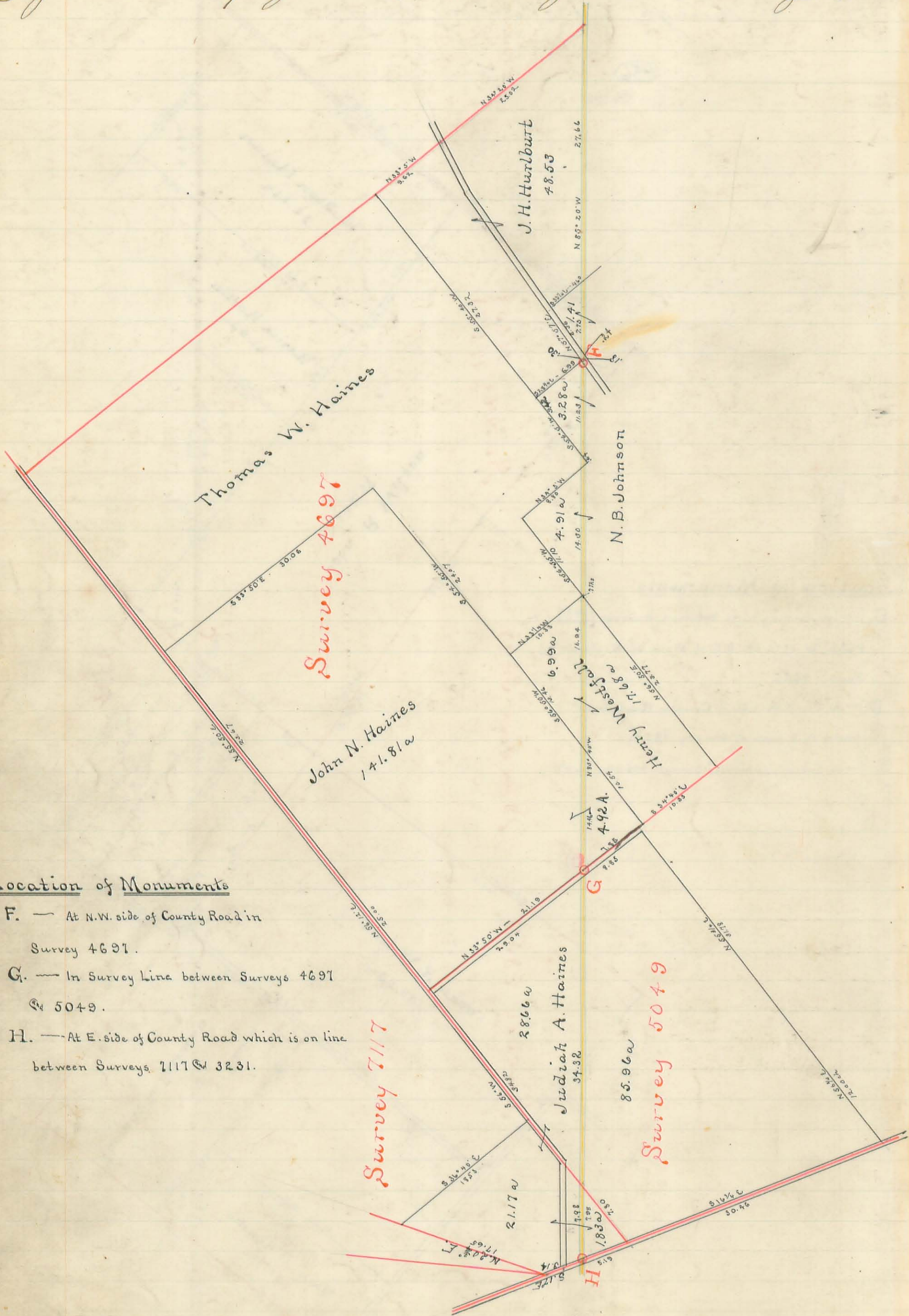
Location of Monuments

- C — In Survey line between Surveys {4658 / 4678} x
4666, @ 17.18 ch. S.E. of stone at N. corner of
Survey 4666
- D — At the S.W. side of County Road near
center of S. part of Survey 4859.
- E — In Survey line between Surveys 4859 @ 4697

33 41
17 51
2 210

Surveyed as above Oct 11-1892 + Oct 13-1893 -
Geo. C. Andrews
Surveyor - Logan County Ohio -

Logan and Champaign Co. Line, through the Military Lands



Location of Monuments

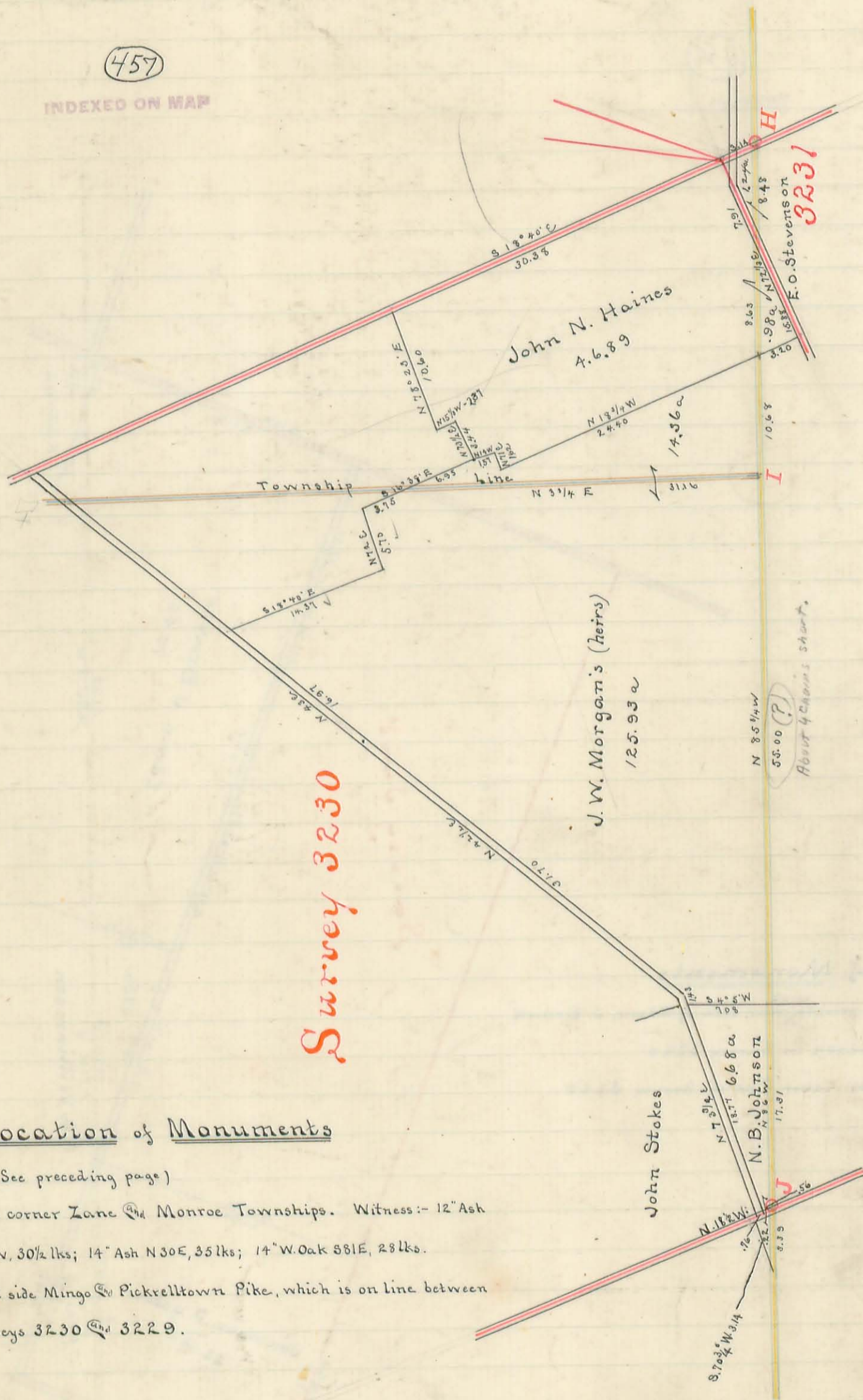
- F. — At N.W. side of County Road in Survey 4697.
- G. — In Survey line between Surveys 4697 & 5049.
- H. — At E. side of County Road which is on line between Surveys 7117 & 3231.

Surveyed as above Oct 11-1892 - Oct 13-1893 -
 Jas. C. Houdin
 Surveyor Logan County Ohio

Logan and Champaign County Line through the Military Lands

(457)

INDEXED ON MAP



Location of Monuments

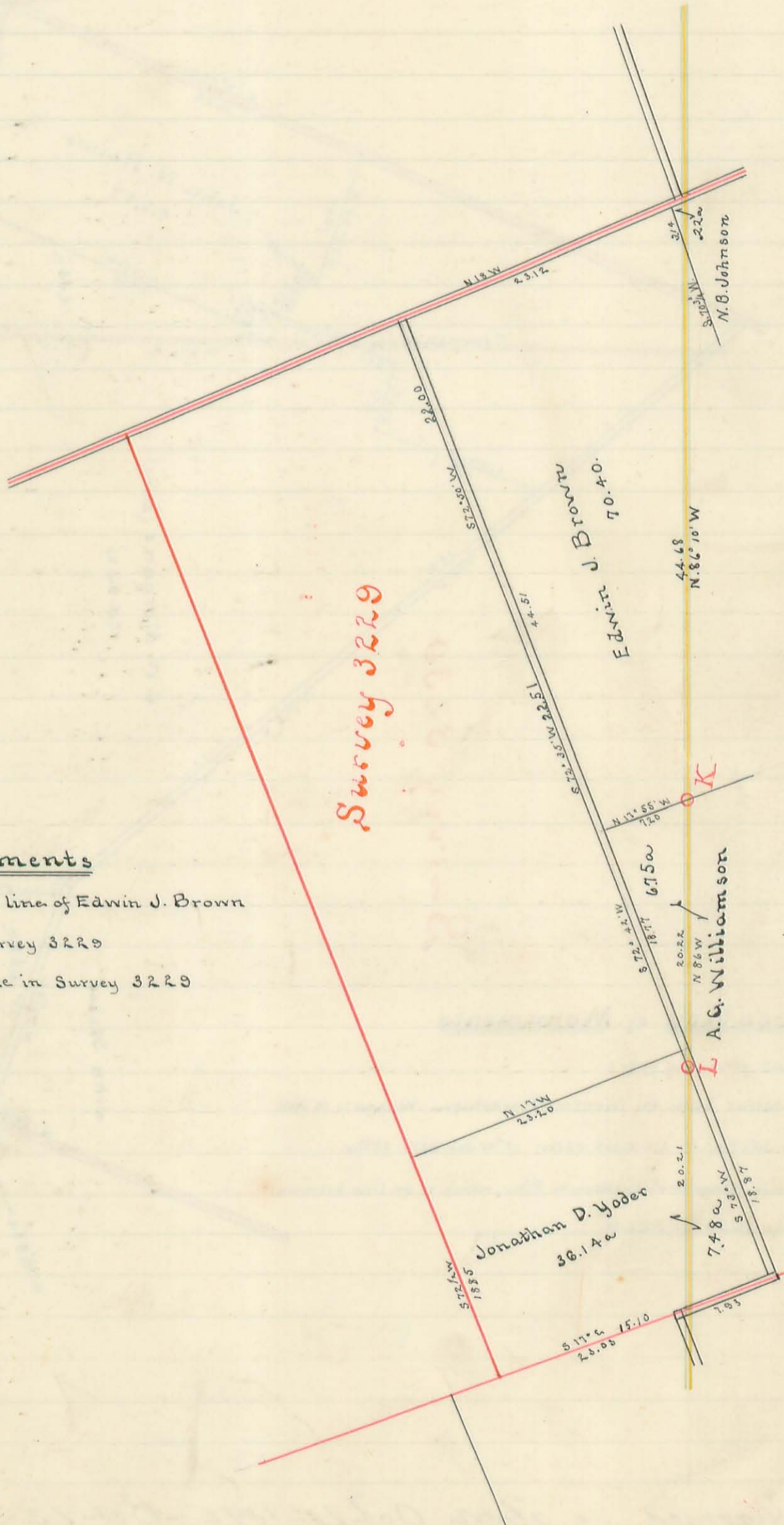
- H - (See preceding page)
- I - At corner Lane and Monroe Townships. Witness: - 12" Ash
N84W, 30 1/2 lks; 14" Ash N30E, 35 lks; 14" W. Oak S81E, 28 lks.
- J - At E side Mingo and Pickrelltown Pike, which is on line between
Surveys 3230 and 3229.

Surveyed as above Oct 11 - 1892 - Oct 13 - 1893 -
 Jas. C. Wonders
 Surveyor Logan County Ohio

Logan and Champaign County Line through the Military Lands

(458)

INDEXED ON MAP



Location of Monuments

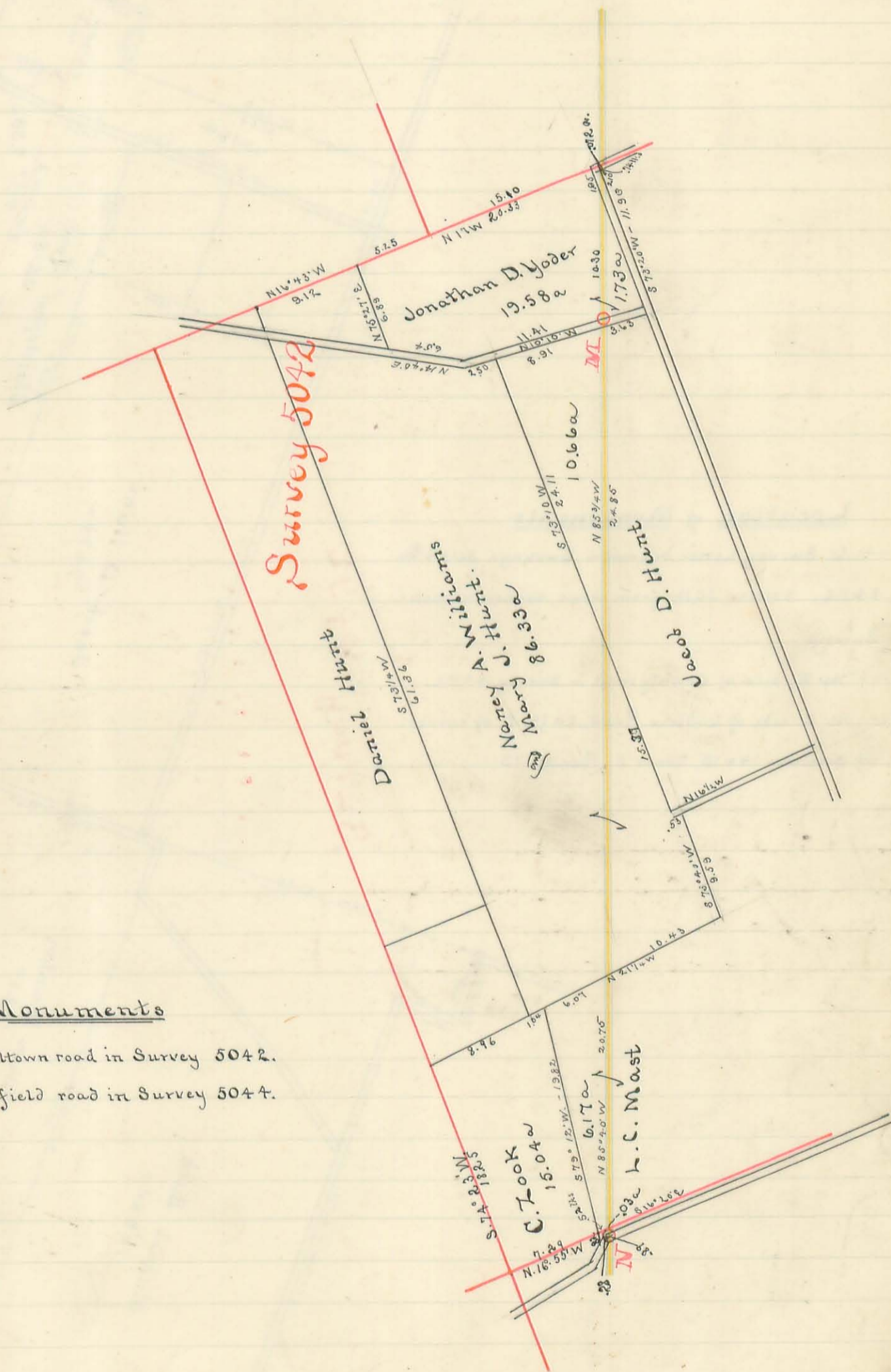
- K - At W. side of private road near line of Edwin J. Brown
- A.G. Williamson in Survey 3229
- L - At N. side of Mt. Tabor Pike in Survey 3229

Surveyed as above Oct 11 - 1892 - Oct 13 - 1893 -
 Jas. C. Houders
 Surveyor Logan County Ohio

Logan and Champaign County Line through the Military Lands

(459)

INDEXED ON MAP

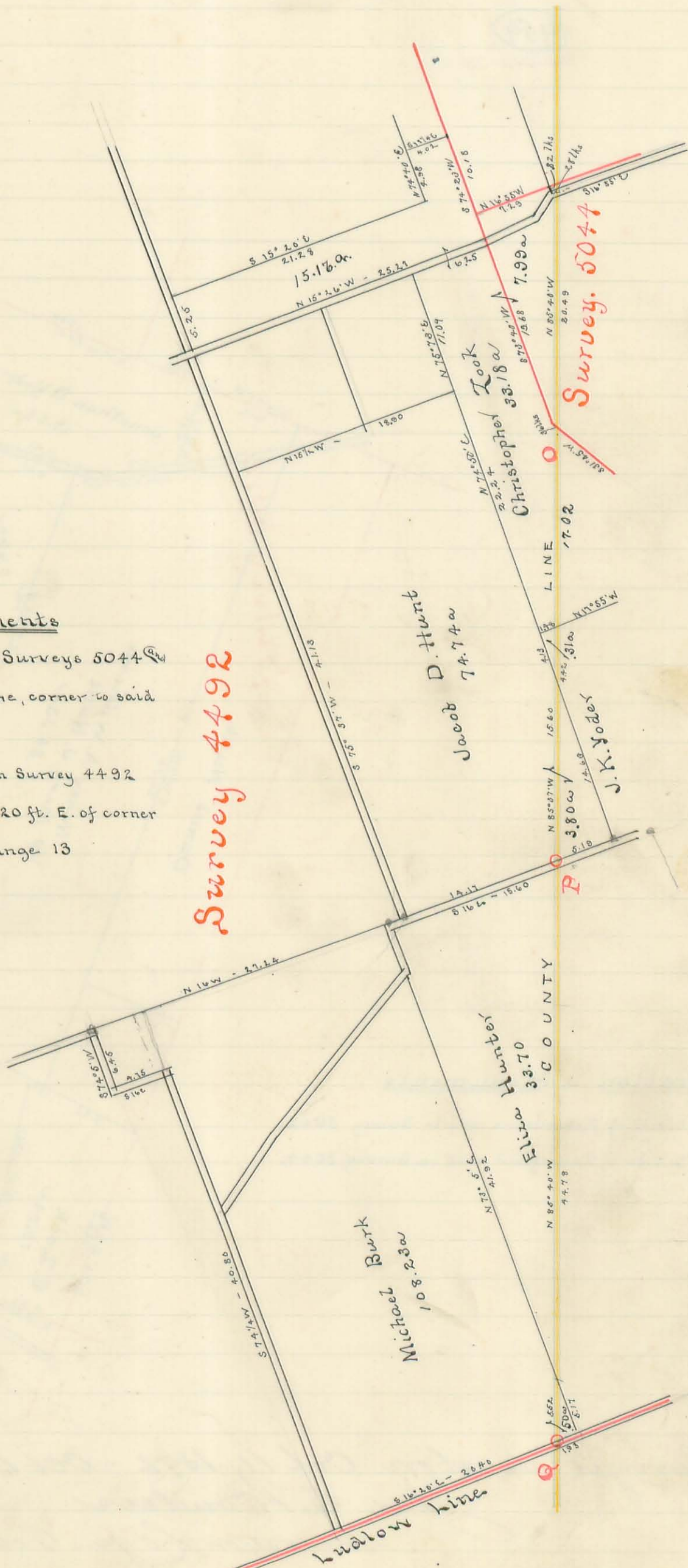


Location of Monuments

- M — At E. side of Pickreltown road in Survey 5042.
- N — At E. side of Zanesfield road in Survey 5044.

Surveyed as above Oct 11, 1892 - Oct 13, 1893 -
 Jas. C. Henders
 Surveyor Logan County Ohio.

Logan and Champaign County Line through the Military Lands



Location of Monuments

- O — At Survey Line between Surveys 5044 & 4492, S 31 1/4 W, 36 lks from stone corner to said Survey.
- P — At E. side of County road in Survey 4492
- Q — At E. side of Ludlow Road, 20 ft. E. of corner of Sections 14 & 15, Town 5, Range 13

Surveyed as above Oct. 11 - 1892 - Oct. 13 - 1893 -
 Jas. C. Houdou
 Surveyor Logan County Ohio -

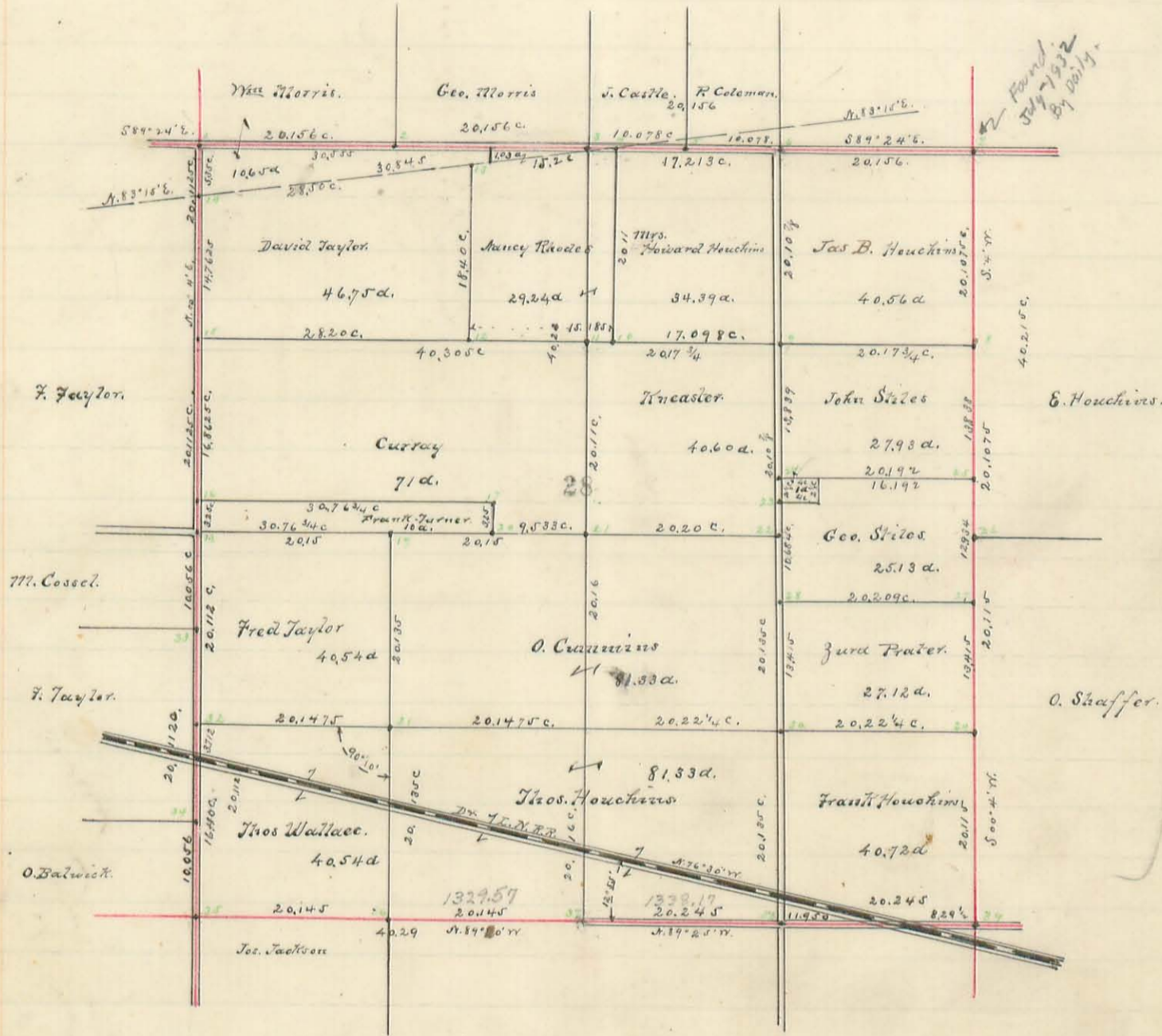
The original of this page is blank or missing.

461

INDEXED ON MAP

Survey of lands in Stokes Tp.
Sec. 28, T. 6. R. 8. Commenced Survey Mar. 22, 1900.

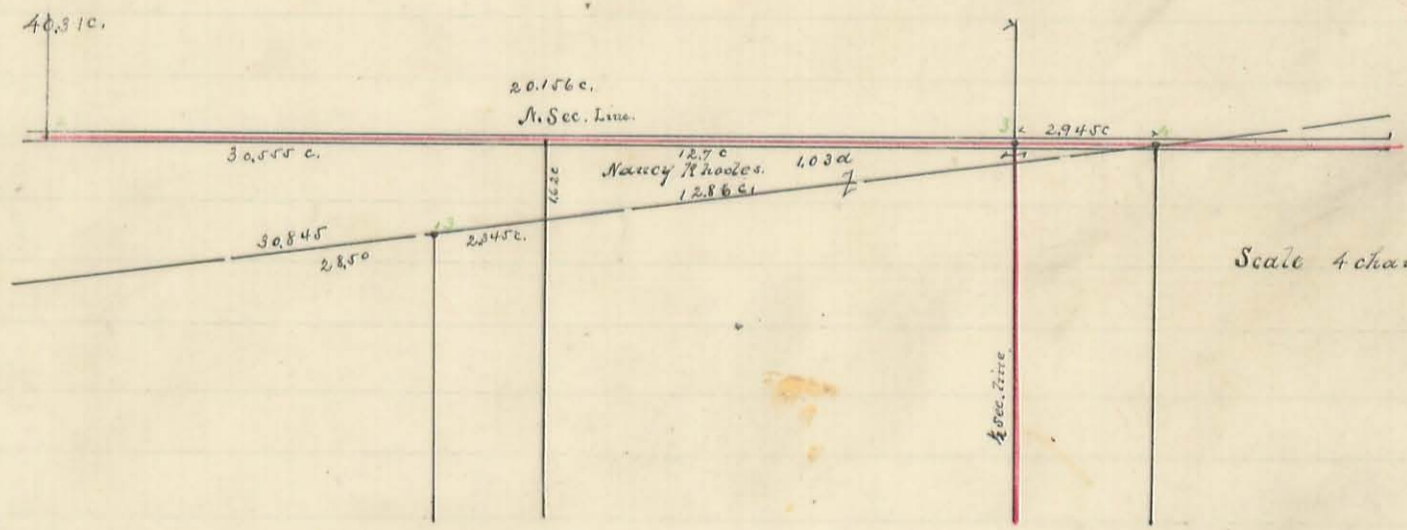
Scale 16 ch. to 1 inch.



20.1125
20.1125
40.2250

10.056
20.112
10.056
40.224

Found
July 1932
By Dolly



Scale 4 chains to 1 inch.

Description of corners in Sec. 25, T. 6, R. 8.

March 28th 1900.

- No. 1 - Stone at N.W. cor of Section.
- No 2 - Stake between lands of Geo. and Wm Morris on North.
- No 3 - Lime stone at half Section Line and between lands of Geo. Morris and J. Castle.
- No 4 - Iron pipe at intersection of Reservation Line with N. Sec. Line, N.W. corner of H. Hawkins land $\frac{1}{2}$ N.E. cor. of A. Rhodes.
- No 5 - Lime Stone and brick between lands of J. Castle and P. Cozeman on N. of Sec Line.
- No 6 - Lime Stone 15" long and bricks, and line between H. Hawkins and ^{Hawkins}
- No 7 - Lime Stone with wagon spoke drive under it, and line between ^{223 South To Anchor Post} Hawkins and Elish. Hawkins, N.E. cor. of Sec.
- No 8 - Stone & brick - witness. Forked Elm N. 30° W. 45 l. 4" Elm S. 25° W. 37 1/2 l.
- No 9 - Two Stones & a brick to one side of the present road.
- No 10 - Iron Pipe
- No 11 - Lime Stone.
- No 12 - Stone left as found.
- No 13 - Stone & tile moved north from where found 3.4 ft.
- No 14 - Stone moved N. 3 l. from where found.
- No 15 - Stone moved 13 l. N. from where found.
- No 16 - Stone.
- No 17 - Lime Stone and tile.
- No 18 - Stone and harrow tooth. - stone moved N. from original. - at $\frac{1}{2}$ Sec. line
- No 19 - Sand Stone with 4" S. Bar & tile underneath.
- No 20 - Lime Stone & tile under.
- No 21 - Large Stone & tile.
- No 22 - Stone, on $\frac{1}{2}$ Sec. Line & between lands of Cummins & Wheeler.
- No 23 - Iron Pipe 3' long at S.W. cor. of a 1st tract belonging to J. Stiles & 2 1/2 chains S. of his S.W. cor. of 27,730.
- No 24 - Iron Pipe 3' long at N.W. cor. of " " " " " " & S.W. cor. of his 27,930.
- No 25 - Stone & pipe - wit. 18" Hickory S 10° E. 51 l. - 10" Sycamore N. 49 l.
- No 26 - Large stone extends above ground 1 1/2' - at $\frac{1}{2}$ Sec. cor. & Line between E. Hawkins & O. Shaffer.
- No 27 - Stone & Iron Pipe.
- No 28 - Stone Pin.
- No 29 - Stone & stake - wit - 5" oak S. 45° E. 23 l. - 10" ash E. 47 l.
- No 30 - Stone.
- No 31 - Lime Stone & tile.
- No 32 - Lime Stone 20" x 6" x 6" & brick
- No 33 - Blue sand stone 12" long. - wit - 4" mulberry S. 60° E. 96 l. 4" Hickory N. 20° E. 115 l.
- No 34 - Lime stone 9" x 7" at base pointed top & 16" long. - brick underneath. wit. 18" R. O. S. 20° E. 89 1/2 l.
- No 35 - Stone at N.E. corner of Sec. 32. & S.W. cor. of Sec. 28.
- No 36 - Stone 2' long - wit 14" ash N. 20° E. 13 l. - Corner between Hawkins & Wallace & Jos. Jackson's N.E. corner.
- No 37 - Stone - very large; at $\frac{1}{2}$ Sec. corner - left as original
- No 38 - Sand Stone mound not 6 l.
- No 39 - 27" Lime Stone. S.E. cor. of Sec. - wit 14" oak S. 54° E. 4 l. - 8" Hickory S 45° W. 120 l. mound N. 128° E. & W. 115 l.

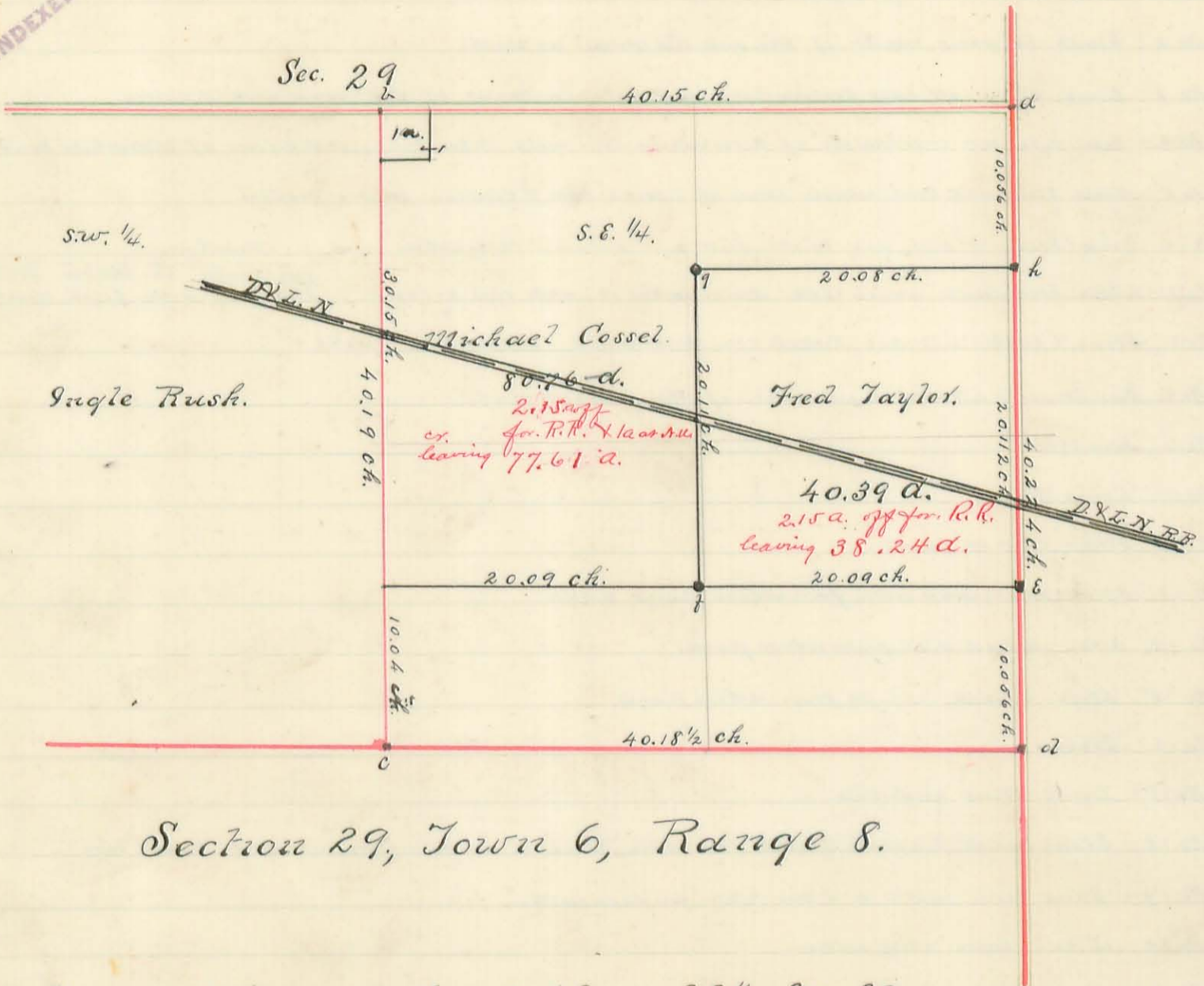
From (35) to center R.R. 164.0 ch; From (38) to center R.R. 274 e.; From (39) to center of R.R. 829 1/2 e.

Deduct 4.14 d on Thos Hawkins for R.R. - 207 d. on Thos Wallace, for R.R. - 123 d on Frank Hawkins for R.R.

Walbur A. Ginn Co. Surveyor. Logan Co., O.

C. Miller Deputy.

(462)
INDEXED ON MAP



Section 29, Town 6, Range 8.

- a- Stone and harrow tooth at N.E. cor. S.E. 1/4 Sec. 29.
- r- Stone at N.W. cor. S.E. 1/4 Sec 29.
- c- Stone " S.W. " S.E. 1/4 " Sec 29.
- d- Stone. " S.E. " S.E. 1/4 Sec. 29.
- e- Stone Lime 9"x7" at base pointed top 16" long; brick underneath with 18" R.O.S. 20"E. 87 1/2 S.
- f- Iron Pin - with 20" Sweet Oak N. 60° E. 61 l. - N. 50° E. 15" Sweet Oak - 113 l.
- g- Iron Pin - with 8" Sweet Oak S. 87° E. 119 1/4 feet.
- h- Stone - Blue Sand Stone 12" long - with 4" mulberry S. 60° E 96 l. - 4" hickory N. 20° E 115 l.

July 12" 1900.

Wilbur A. Ginn, Co. Surveyor.
 pr. C. A. Miller Deputy.

James Miller }
 J. - Castle } Chainmen.

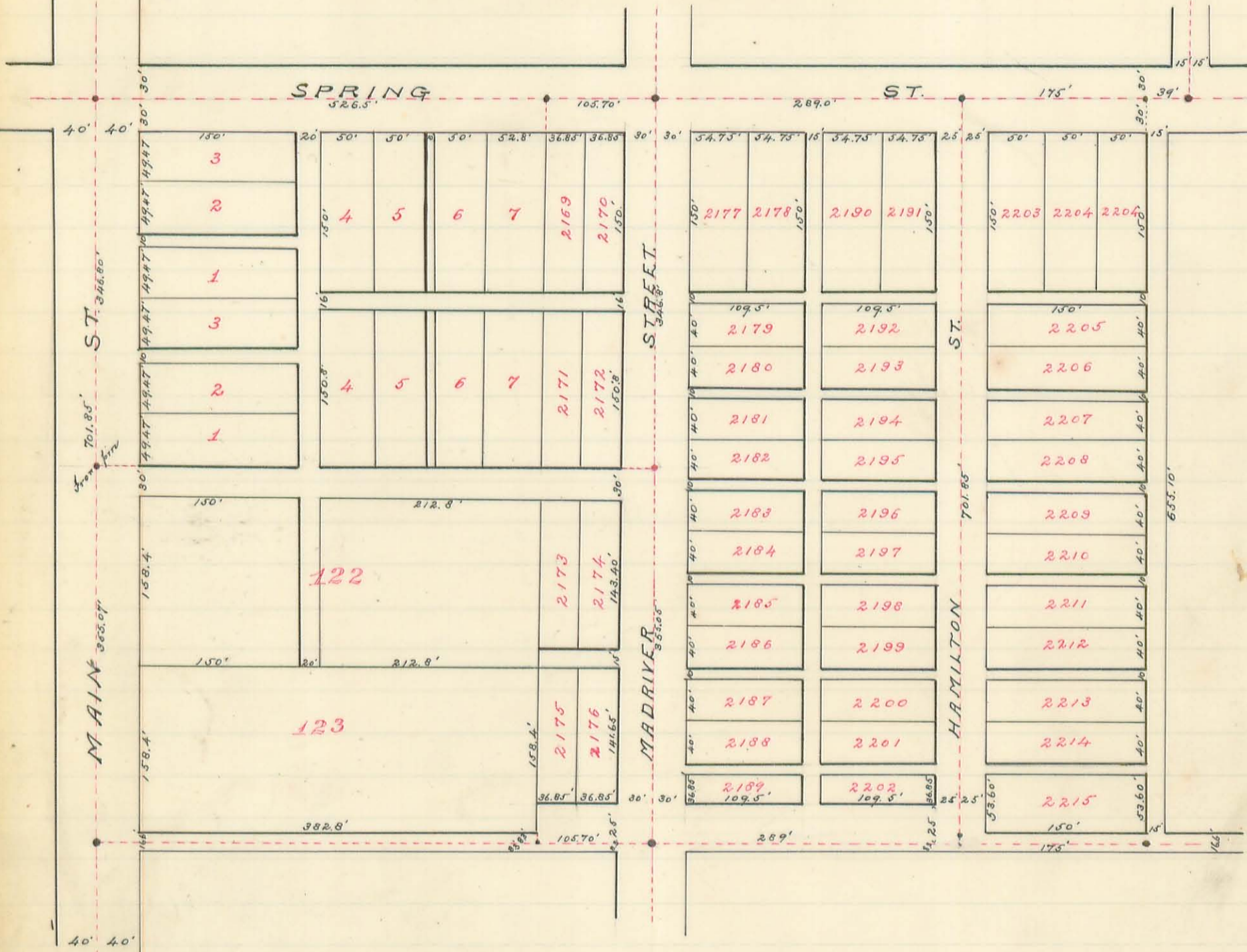
The original of this page is blank or missing.

76 lines
300 W.

(463)
INDEXED ON MAP

SPRING VALLEY ADDITION,

TO
BELLEFONTAINE, OHIO.



I the undersigned Surveyor do hereby certify that the above is a true representation of Spring Valley Addition as surveyed by me upon request of the owners Hamilton Brothers and Cotton Bros. being Outhot No 124 and parts of 125 and 126 of McCollocks Addition to Bellefontaine, Ohio

Surveyed May-1894.

William A. Linn
Columbus