

## Record of testimony N. B. Smith Sur. continued

John S. Wilgus. testimony concluded.

Ques What do you know of channel of creek at west line of Wilgus  
Ans The channel has changed to the north about 1 1/2 rods at this north turn since dam went down. Don't know when the channel was before dam was made.

Ques What do you know of channel of creek at this point (28<sup>th</sup> of line 2 and at watering place S. G. Fisher east of road at most northerly bend of creek)

Ans Do not know much about it, it has changed some can't tell how much. But has changed about 1 rod north

1886

Oct 19<sup>th</sup>

Wrial L. Mann. Surveyor E.C. (Sworn)

Ques What knowledge have you of the north west corner of Daniel Dupler's land.

Ans Some 12 or 15 years ago was called here by Samuel Dupler to survey his north line and he brought me here to a large stone which he considered his north west corner. and beginning at that stone I ran (surveyed) easterly past the cross-road at Hickman corner and passing south some 8 to 10 feet from south side of an old barn or stable east of the "corner" on Geo. Osborne lot (Routts lot) then through a grave yard and continuing on same course to a stake or stone think it was a stone on Lanesfield <sup>of</sup> North Greenfield road and considered the corner to Daniel Dupler <sup>of</sup> N. B. Smith.

Ques When was the stone at the north west corner Daniel Dupler at that time.

Ans I can locate the exact spot or nearly as.

Ques At that time the stone was in range with the center of the old road running eastward and in the east line of John Elliott's land.

Ques Can you point out the place where the stone stood

Ans This stake and stone planted this day and where I now stand is the place as I truly believe

Ques Did Mr Dupler at any time claim land further north than that stone

Ans Never that I know of.

Ques (By Elliott Dickinson) What was his object in having his land surveyed at that time

Ans His object was to find whether the buildings or fences claimed <sup>by</sup> Osburn belonged to him, Dupler.

Ques Can you locate the place claimed by Mr Dupler as his north east corner.

Ans I think I can. (go to N.E. cor) where I now stand marked by this stone is the place.

Ques What evidence have you that this is the place.

Ans I surveyed the 3 acres conveyed by Smith to Dupler and found this stone to indicate one of the corners, being the correct course and distance from the north east corner of the 3 acre tract. (then he set up instrument and took course and measured distance) and it is in the west line of the old Bushong 300 acre tract. The north west corner of the 3 acre



## Record of testimony D. B. Smith Surv. continued

Urial L. Mann: testimony concluded.

part was claimed by Mr Dupler as his north east corner at that time  
 ques Did he ever claim land north of this stone that you know of.  
 ans No do not know that he did.

876

t 19

ques

ans

William W. Fisher (Sworn)

What do you know about the north line of Samuel Duplers land  
 Was present at time survey of this line was made by Mr U. S. Mann  
 about 14 or 15 years ago. Mr Duplers object by that survey was in  
 part to locate line in reference to school house lot. I then owned  
 land on the north and joining Mr Dupler and he notified me that  
 the survey was to be made and stated the school house lot as part  
 cause for survey.

ques Did Mr Dupler accept the line as located by Mr. Mann at that time  
 as the line between his and your land.

ans Yes he did and at no time after that did he claim to be dissat-  
 isfied.

t 29

ques

ans

ques

ans

ques

ans

ques

ans

ques

ans

ques

ans

ques

ans

T. B. Wilgus (Sworn)

How long have you been acquainted with this mill dam and the  
 adjoining lands

ans Since I was a boy 11 years old. am now 62 years old

ques What do you know of the old John B. Wilgus north line and its con-  
 nection with this mill dam.

ans Well I know within a few feet of where the line was claimed  
 to be by both parties at the dam.

ques Can you locate that line at the dam.

ans I think I can come close to it. The line was just about that stake  
 (stake at north end of line R and in line D<sup>2</sup>2) In making this excavation  
 from this bank to get earth for dam we went a little beyond  
 the line (excavation made about one rod north of stake)

ques Was there a fence from north end of dam west to the Harriman  
 line

ans Yes and was supposed to be on the line

ques At what time was this work of excavation done

ans About 40 years ago

ques Was there more than one tumble (water wheel) built on this dam

ans Yes there was

ques How many and when were they

ans There was one here (at depression in dam and on line D<sup>2</sup>1) and there  
 was one here (at depression in dam and 73 links north of line D<sup>2</sup>1) this last  
 was built after I quit work on the mill.



## Record of testimony D. B. Smith Survey concluded.

✓ T. B. Wilgus testimony concluded

- ques Can you locate the north west corner of the old saw mill  
 Ans I can come very near it. this sill (point to old mill site) I believe to be the north line of mill and this the north west corner of the mill (then put in stake  $7\frac{1}{2}$  feet north of stake set for mill corner by S. Harriman)
- ques Were you ever present at any survey of Wilgus north line.  
 Ans No was not.
- ques When was the saw mill built  
 Ans Do not know but the mill and a temporary dam were built previous to 1835
- ques When was temporary dam rebuilt as now is  
 Ans Sometime between 1835 & 1840.
- ques What changes have been made in this dam since 1840.  
 Ans Both the tumblers (water-wheels) at the north end of the dam were put in since 1840.
- ques What do you know of the channel of creek at Wilgus west line  
 Ans The channel has moved north about  $1\frac{1}{2}$  rods at this turn (the most northerly bend at west line) since dam went down. Do not know when the channel was before dam was made
- ques What do you know of channel of creek at this point (at 28<sup>00</sup> of line 2 and at most northerly bend of creek east of road and place where S. D. Fisher water took from his barn)  
 Ans At this point creek has changed north about 8 feet.

1886  
 Oct 29<sup>th</sup>

✓ David H. Harriman Sworn

- ques What do you know channel of creek at west line of Wilgus  
 Ans The channel has not changed much since I knew it, has changed not more than  $\frac{1}{2}$  rod north at this point turns here. known it for 20 years. am 43 years old
- ques What do you know of channel of creek at this point (at 28<sup>00</sup> of line 2, as above)  
 Ans Don't know much but has changed north about 10 feet

1886  
 Oct 29

✓ Ira Bryner Sworn

- ques What do you know of creek channel at this point (at 28<sup>00</sup> of line 2)  
 Ans The creek in my recollection has changed its channel north 8 or 10 feet.

See plat page 169



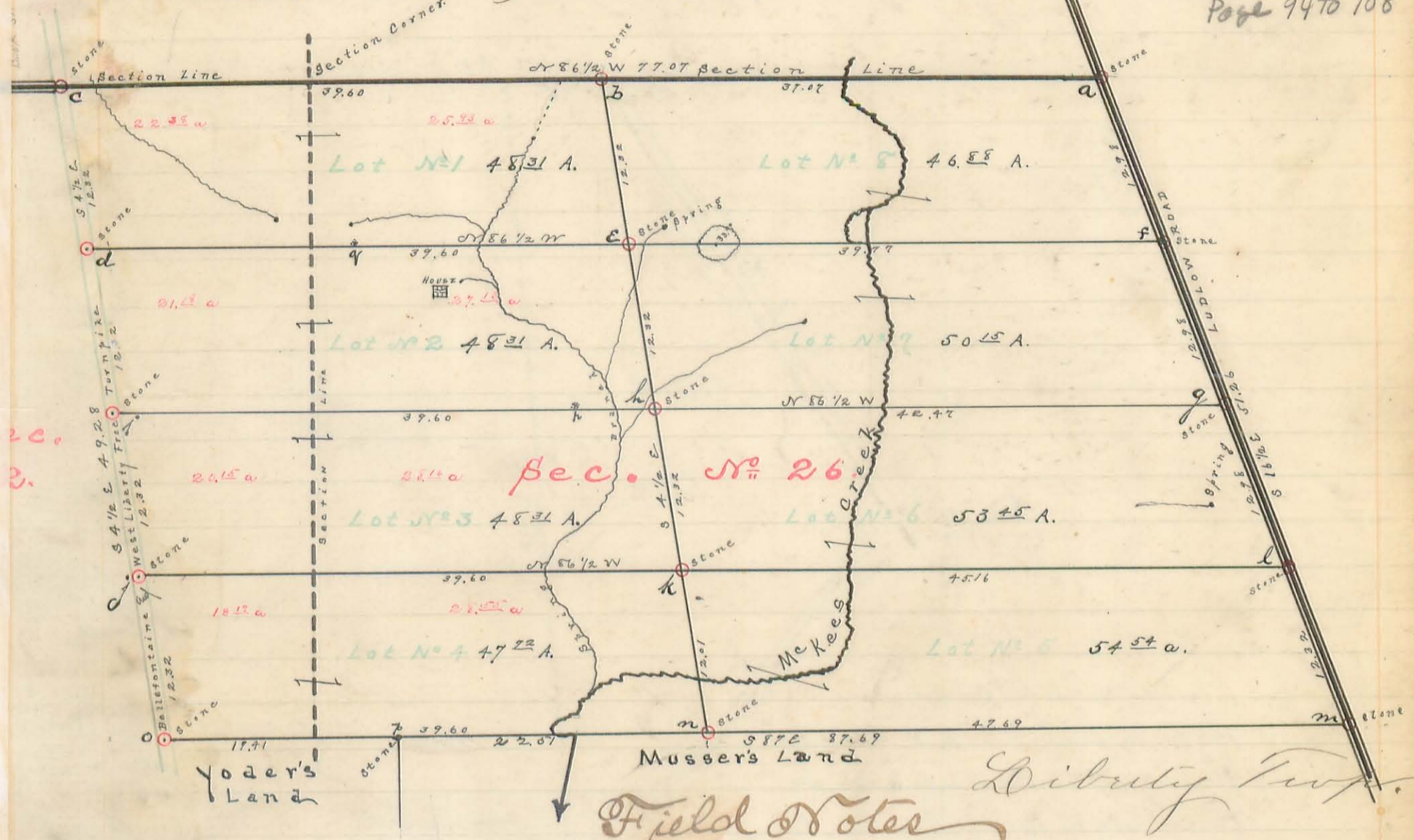
Parts of Sections 32 & 26 Town 4 Range 14.

(404)

Samuel Epley } chain carried down  
Isaac M. Wilkins }

INDEXED ON MAP

Note Book 97  
Page 94 to 108



Field Notes

- a = Stone N.E. cor. Sec 26. N.O. old bearing tree 42" S 49 W 21 links. and N 29 E 33 links dug 2 feet in old railroad fill and at level
- " = of natural ground surface find remains of W. Oak tree stump in place. old. B.T. Took new B.T. N.O. 24" N 87 1/2 W 53 1/2 links
- b = Stone 15" x 15" x 10" planted by one cor lots 1 & 8. no trees near. Corner a. S. & c. on section lines
- c = Stone 27" x 14" x 6 in cut pike. W. Oak 14" N 39 W 115 1/2 lks. & W. Oak 30" S 18 1/2 W 132 links & south west corner of
- d = frame house N 74 1/2 E 75 1/2 links, & south west corner of Lot 1 S 86 1/2 E 40 links
- e = Stone 24" x 9" x 9" in cut pike. White Oak 12" N 72 1/4 W 127 links & Hickory 10" N 38 W 143 lks. & cor lots 1 & 2 S 86 1/2 E 40 links
- f = Stone East line Sec. cor lots 7 & 8. stone 18" x 7" x 10". W. Oak 24" S 85 1/4 W 96 lks. & W. Oak 28" S 11 1/2 W 172 1/2 lks. & Hick 15" S 58 1/4 E 154 lks.
- g = " " " " " " 6" 7. " 20" x 10" x 7". Hick 20" S 58 1/4 W 66 & Elm 22 S 40 W 158 1/2 lks. & Hick 22" S 12 1/2 W 182 lks.
- h = Stone 22" x 7" x 10" cor lots 2, 3, 6 & 7 no trees near
- i = Stone 24" x 9" x 12" in cut pike. Burr Oak 16" N 37 3/4 W 250 lks. & Hickory 20" N 7 1/4 E 147 lks. & cor lots 2 & 3 S 86 1/2 E 40 links
- j = " 17" x 10" x 8" " " corner lots 3 & 4 S 86 1/2 E 40 links
- k = " 17" x 10" x 6" corner lots 3, 4, 5 & 6. W. Oak 38" N 54 1/2 W 21 1/2 lks. & W. Oak 21" N 53 1/4 W 101 1/2 lks. & Burr Oak 32" S 58 1/4 E 203 lks.
- l = " 20" x 8" x 9" in East line Sec. cor lots 5 & 6. W. Oak 26" N 80 1/2 W 90 1/2 lks. & W. Oak 26" S 44 W 169 lks.
- m = " 7" x 8" x 2" " " " " S.E. cor lot 5 & N.E. cor Musser's land. Black oval 18" S 1 W 177 lks. & W. Oak 30" N 48 1/4 W 102 1/2 lks.
- n = Stone in Musser's north line, cor lots 4 & 5. W. Oak 24" N 79 3/4 E 111 1/2 lks. & W. Oak 26" N 3 W 82 lks. & Burr Oak 24" N 70 3/4 W 57 1/2 lks.
- o = " planted cut pike. W. Oak 30" S 67 1/2 E 110 lks. & W. Oak 36" S 33 E 178 lks. & Black Oak 28" N 20 E 170 1/2 lks. & cor lot 4 S 86 1/2 E 40 lks.
- p = Stone corner Musser & Yoder and S 86 1/2 E 17.41 ch. from stone at o. & W. Oak 30" S 14 W 10 lks. & W. Oak 24" S 79 1/2 E 29 1/2 lks.

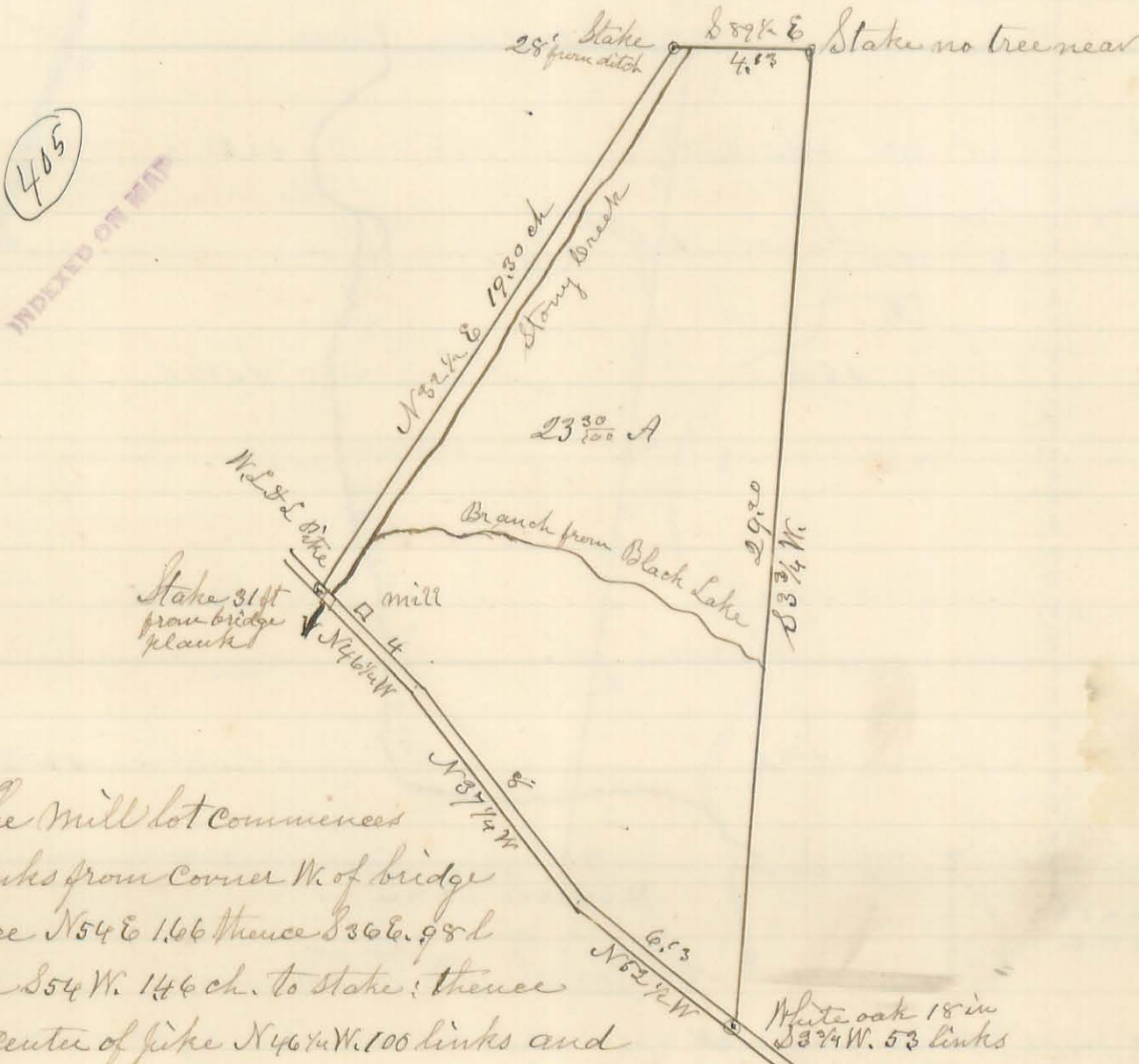
Distances in chains as shown on plat and also as given below.

- q = W. Oak 30" diam. north 10 links from line e to d and 20.03 offset of cor. e. being cor lots 1, 2, 7 & 8.
  - r = W. Oak 24" one link south of line i to h and 34.35 east of stone cut pike at i.
- The above lines were run as follows. From a to c and cor planted at b. From c to o and corner planted 12.32 apart. From o to n and corner 12.32 apart to k. From a to m and corner planted 12.98 apart to l. From m to stone at p and line continued to o. and planted in line onto p.

Surveyed as shown above Feb. 21st 1857  
By S. A. Buchanan Esq. Surr. L. Co. Ohio



Part of the E. 1/2 Section 5 Town 3 Range 13 M.R.<sup>s</sup>  
 Surveyed for John Wolf Miami Township Logan County Ohio  
 as shown by the following plat.



The mill lot commences  
 198 links from corner W. of bridge  
 thence N 54 E 1.66 thence S 36 E. 98 d  
 thence S 54 W. 146 ch. to stake; thence  
 with center of dike N 46 1/4 W. 100 links and  
 contains 15/100 of an acre, not included in the 23 30/100 acres as above.

Surveyed March 2<sup>d</sup> 1887  
 March 28 A.D. 1887

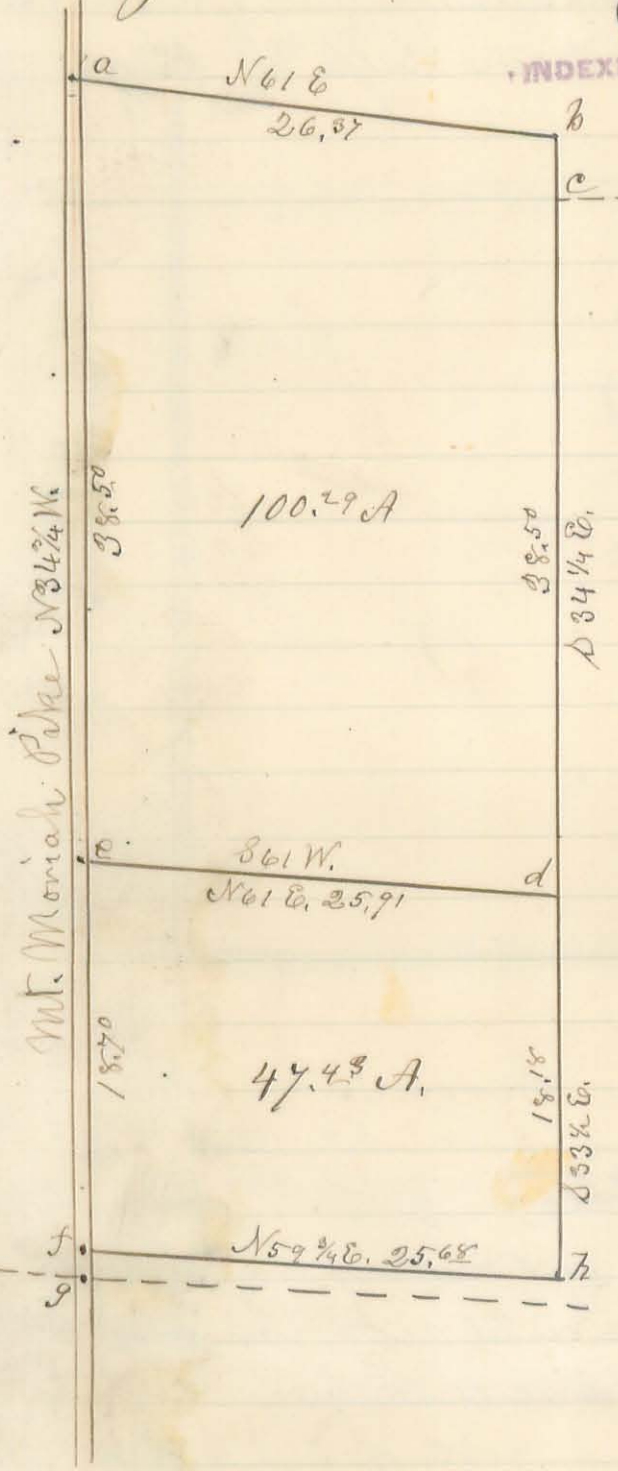
S. A. Buchanan Co. Surveyor  
 for M. W. McCormick Deputy



Part of Original Virginia Military Survey No. 479, in  
Jane Township.

(406)

INDEXED ON MAP



March 28<sup>th</sup> A.D. 1887  
Field Notes

- a = Stake driven in center of pike no tree near
  - b = Stake a sugar tree Down's Corner S 33 1/2 E. 241 links
  - c = Sugar tree 20 in N.W. Corner to lands of Jordan Down's.
  - d = Stake 8 links Eastward from a stone
  - e = Stake driven in center of pike near a gravel bank, no tree near.
  - f = Stake driven in center of pike 75 links from Corner of Survey
  - g = S.W. Corner of Survey No. 479
  - h = Stake a Beech tree 12 in S 63 W. 33 lvs a beech 10 in. N 86 W. 31 1/2 l.
- The broken line represents the South line of said Survey No. 479.

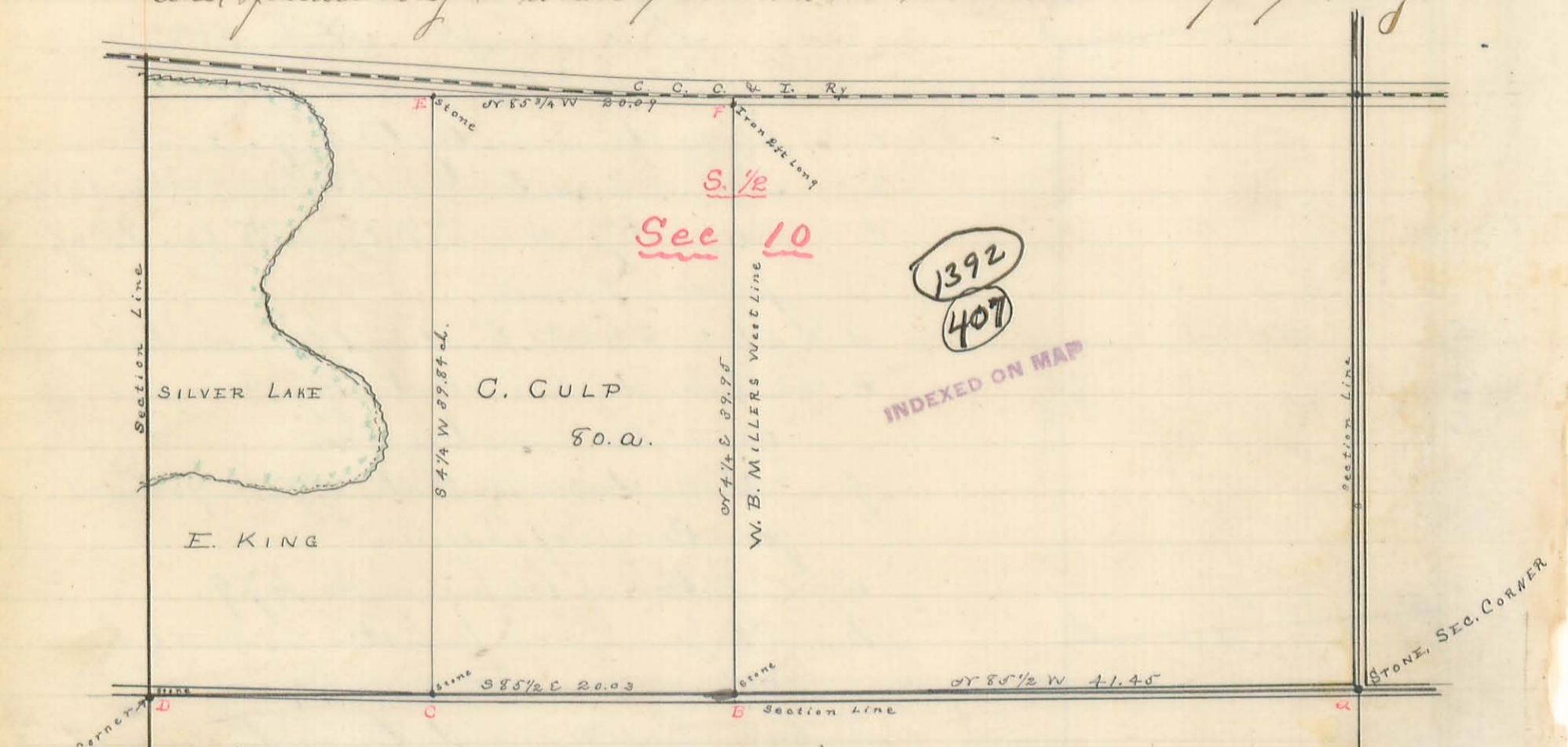
Surveyed as represented by the above plat for J. F. Sharpe and others on the 25 day of March A.D. 1887-

J. A. Buchanan Co. Surv.  
per M. W. McCormick Deft.



Plat of South 1/2 Sec No 10. Town 3. Rang 14.

Agd for R. A. King  
 Surveyed for Chris Culp & C. King, to establish the lines of Culp's land  
 and particularly to locate & establish the line between Culp & King.



Henry Heppner } chain carriers. Sworn.  
 William Luthicum }

Field Notes. Book 97 Page 110-112

Began at stone at "a" south east corner of sec. and running a straight line to  
 stone at "D" south west cor. of sec. course N 85 1/2 W. at 41.45 chains located the  
 south east corner to Culp being south west corner to W. B. Miller's land. Thence with  
 Miller's line N 4 1/4 E 39.95 chains to quar res. line in cent. of C. C. & R. Ry track.  
 Thence N 85 1/4 W 20.09 chains to corner Culp & King. Began at "B" south east  
 corner to Culp. thence with sec line N 85 1/2 W 20.03 ch. to cor Culp & King

- A = Stone south east corner Sec 10.
- B = Stone. Boulder 3 3/4 x 1 8/8 x 1 3/8. Shel. Hick 10" N 3 E 52 links & Blk Mal. 2" N 19 1/2 E 17 links
- " = & Blk. Mal. 8" N 81 W 43 links
- C = Stone south west corner Culp & South east corner to King
- " = Boulder stone, 18" x 10" x 7"
- D = Stone south west corner Sec 10.
- E = Boulder stone corner to King & Culp. in quar sec line. Stone is 22" x 12" x 10"
- " = & of center main track R.R. N 4 1/4 E 114 links
- F = post in center main track R.R. from which an iron railroad fish plate (large  
 iron) 2 feet long on line Miller & Culp bears S 4 1/4 W 50 feet. & from said  
 fish plate a W. Oak 22" S 66 1/2 W 48 1/2 links & a Hick 16" S 13 1/2 W 115 1/2 links
- " = Said fish plate was driven 22" into the ground.

The corners B. C. F & E were planted by me in presence of the above  
 named chain carriers, & E. King & C. Culp; W B Miller was not  
 present during survey but had been notified of survey to be made.  
 Distances in chains as shown on plat. viz B to C 20.03 chains  
 C to E 39.84 ch. C to F 20.09 ch. F to B 39.95 ch. a to B 41.45 ch.

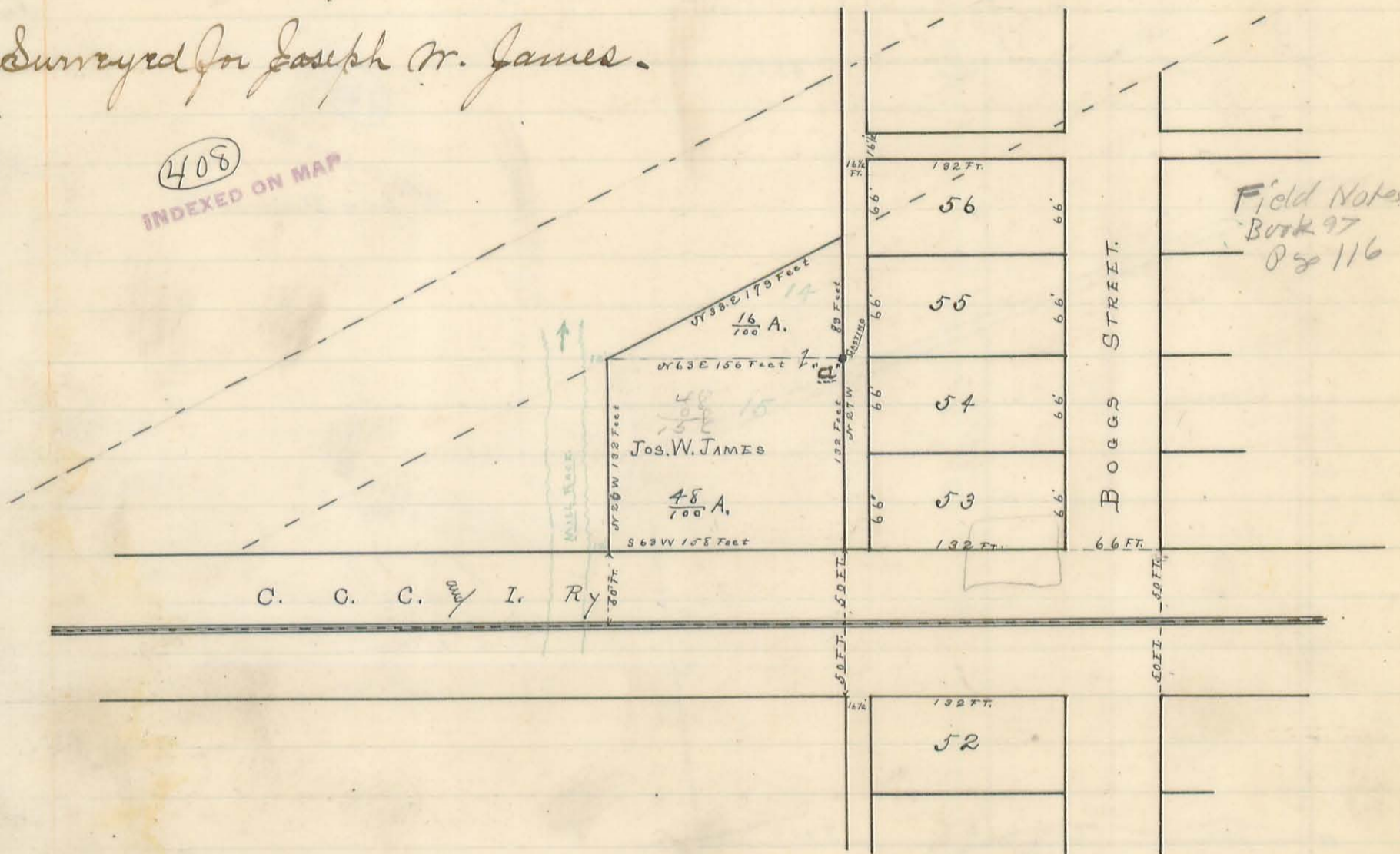
Surveyed on Wednesday April 13<sup>th</sup> 1887 as shown above  
 By S. A. Buchanan Esq. Surv. C. C. O.



Plat of a tract of land in De Graff corporation  
Part of Sec No 12 T 3. R. 13

Surveyed for Joseph W. James.

(408)  
INDEXED ON MAP



"a". Casting, hollow. 2 feet 7 inches long. 6 inches diam. planted on west line of alley and 16 1/2 feet from the north west corner of lot No 54 of the original town of De Graff. Said hollow iron casting planted vertical and about 6 inches below ground surface. The numbers on the 16a & 48a tracts in green ink are same as designated by Auditors Land Duplicate of 1887.

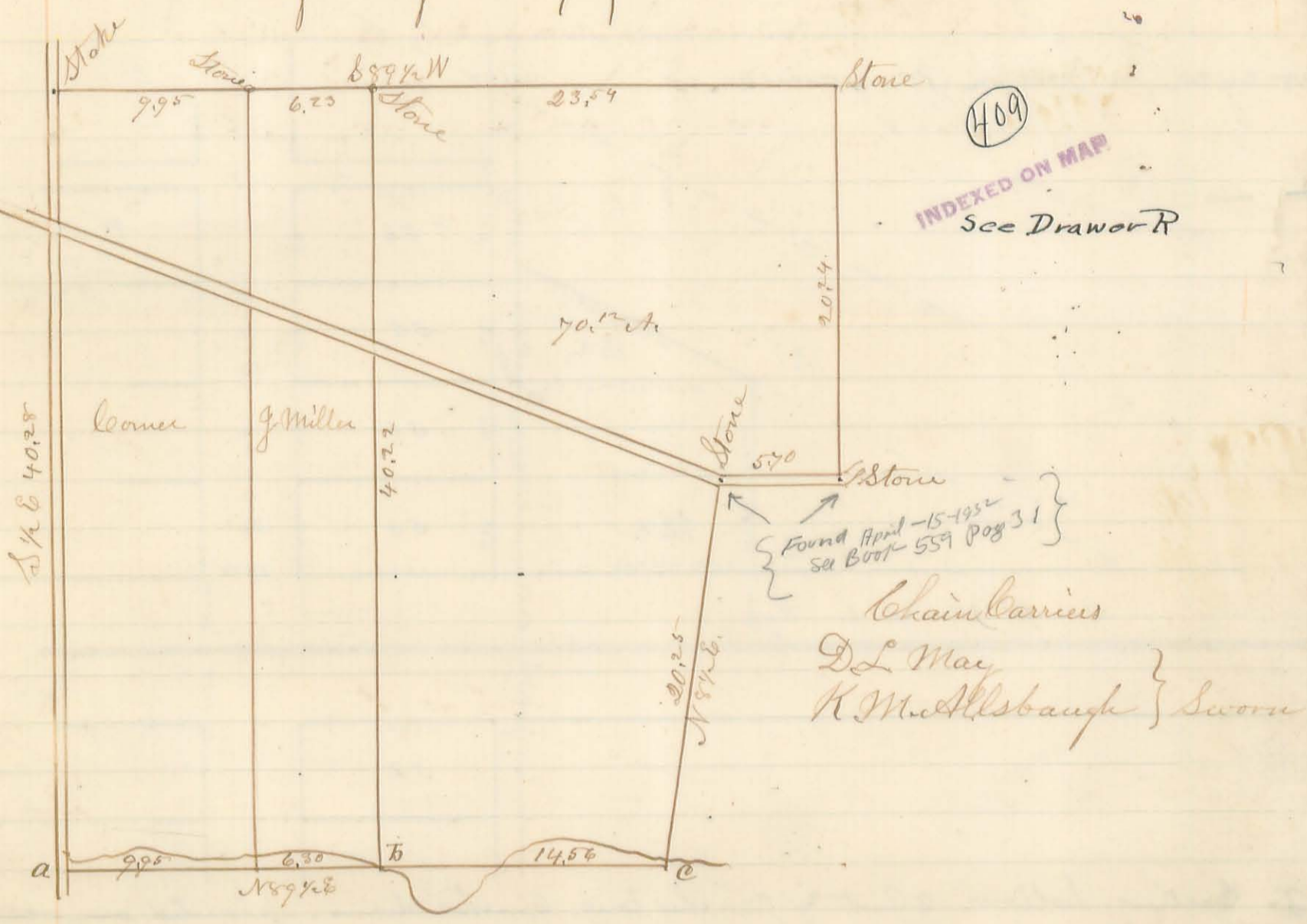
Description of 48a tract No 15. Beginning at "a" (as above described) thence with the west side of alley S 27 E 132 feet to post 50 feet from center C. C. C. & I. Ry track. Thence parallel to said track E 50 feet thencefrom S 63 W 158 feet to a post 12 feet from edge of water in mill race. Thence N 26 W with said race and 12 feet from water edge 132 feet to post. Thence N 63 E 156 feet to place of beginning containing forty eight hundredths of an acre.

Description of 16a tract No 14 Beginning at "a" (as above described) thence with west side of alley N 27 W 89 feet to post. Thence S 33 W 179 feet to post 12 feet from water edge in mill race thence N 63 E to place of beginning containing sixteen hundredths of an acre. Both tracts being part of Section No 12 Town 3 Range 13.

Surveyed as shown above  
April 19<sup>th</sup> 1887 by  
S. A. Buchanan  
Co. Surv. L. C. O.



Part of E. part Section 30 T6 R8 S W gr.  
Surveyd May 11<sup>th</sup> 1887 for Frank W. Bride



- a = S.W. Corner of Section in pike near Creek
  - b = Stone in South Side of Creek, an ash tree 12 in S80E. 36 1/2 l.
  - c = Stone South of Creek.
- Other Corners are Stones no trees near

Surveyd as above by  
 M. G. M. Connick Deputy of  
 S. A. Buchanan County Surveyor.

A. R. Elliott see next page  
 Bellefontaine O. May 31<sup>st</sup> 1887

Mr. \_\_\_\_\_ you are hereby notified that the county surveyor or his deputy will receive on the premises on the 31<sup>st</sup> day of May 1887, such depositions as may be offered according to sections No. 1188 & 1189 of the Stat. for the purpose of establishing the lines and corners bounding lands owned by L. Jeffers, A. R. Elliott, and James Windham, and others situate in Survey 9953 in Rusher creek Tpr Logan Co. Ohio & bounded on the North & East by original survey lines, and on the South and West by lands of M. John Stone, J. R. Reid, J. M. Forsythe, Wm. Harvey & others.

Bellefontaine O. May 31<sup>st</sup> 1887

I hereby certify I served copies of Original notice of Survey on the persons & in manner hereinafter shown: Irene Newman by mail May 10<sup>th</sup> 1887, Chris Jeffers personally May 10<sup>th</sup> 1887, James Windham person left at house May 11<sup>th</sup> 1887, Jerome Musselman by mail May 10<sup>th</sup> 1887. All the above parties appeared in person or by representatives on premises at time of Survey.

A. R. Elliott.







# Plat of School Lot. in Surv. No 4478.

Surveyed for William Krouskop & the Board of Education of Lake Township. to locate school lot. bought from said William Krouskop.

J. N. Evans } chain carriers sworn.  
 J. S. Nichols }

(411)  
 INDEXED ON MAP  
 See Drawer R

Field Notes Book 9  
 Page 123

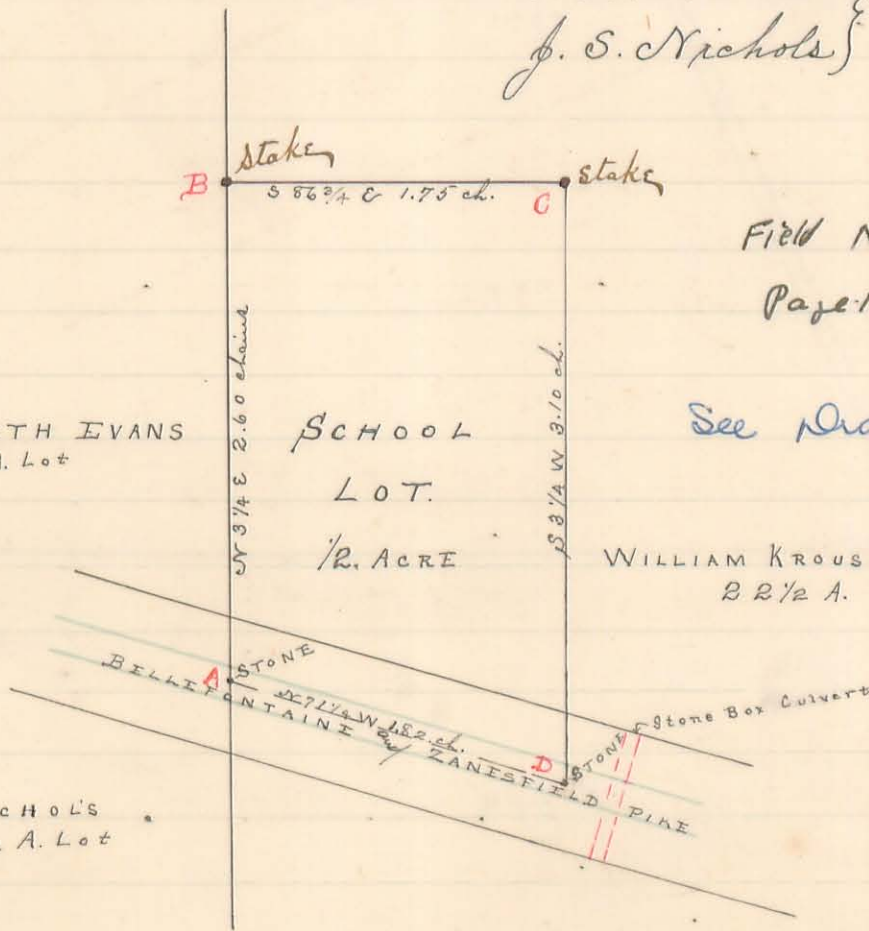
ELIZABETH EVANS  
 6.65 A. Lot

SCHOOL  
 LOT.  
 1/2 ACRE

See Drawer R #885

WILLIAM KROUSKOP  
 2 1/2 A.

C.G. NICHOLS  
 5 1/2 A. Lot



## Field Notes

Began at A. being the south east corner to Elizabeth Evans 6.65 a lot & north east corner to Christina G Nichols 5 1/2 acre lot. At this corner found Black Walnut 18" diam & Horn Bush 6" diam old bearing trees and from them located and established the corner. Thence with line of Krouskop & Evans as determined from above corner A & the stone planted in south line of Akeep land being North east corner to Evans & North west corner to Krouskop N 3 1/4 E 2.60 chains to post in said line corner B. Thence with north line of school lot S 86 3/4 E 1.75 chains to cor. C. Thence with east line of school lot S 3 1/4 W 3.10 chains to post in center of gravel on Bellefontaine & Zanesfield Free pike. Thence with said pike N 7 1/4 W 1.82 chains to the beginning containing one half acre. Took witnesses to corners as follows

- Corner A. Black Walnut 18" di. (O. B. T.) N 26 1/4 E 83 links & the south east corner of a two story frame house N 38 1/2 W 138 links. planted at corner a lime stone 5" x 5" x 14". Center of gravel on pike S. 4 links from corner.
- Corner B. Stake. Fence post of school lot to be put in where this stake stands
- " C " " " " " " " " " " " " " " " "
- " D planted folded stone 5" x 5" x 18" at corner in center of gravel on pike. Stone box culvert under pike S 7 1/4 E 25 links.

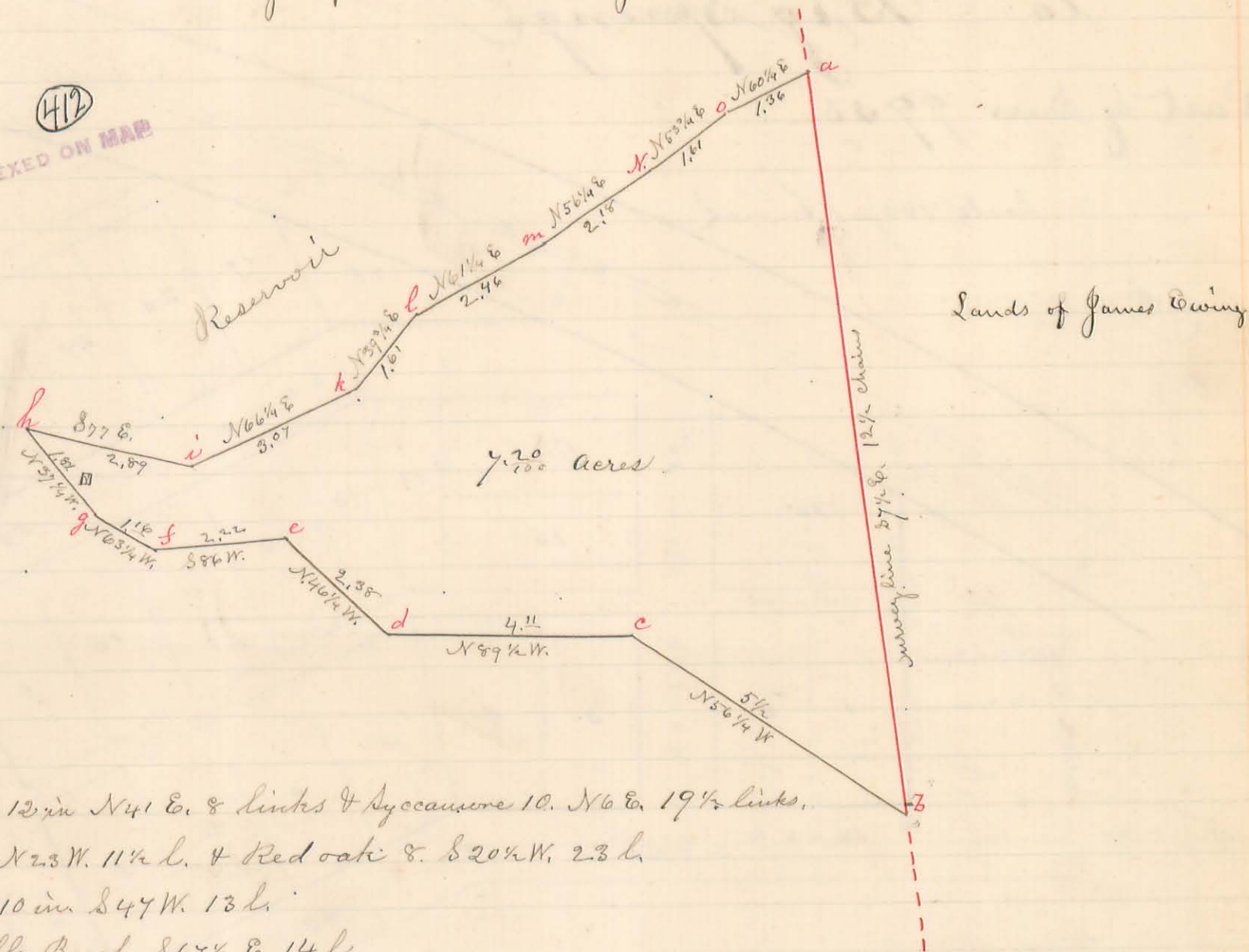
Then was present during survey of lot & planting of corner stones. the chain carriers above & Evans representative of Elizabeth Evans. J. S. Nichols for Christina G. Nicholl. Wm Krouskop land owners interested all of whom were satisfied with lines and corners as surveyed & located. Also Daniel Shannon, Stewart Watson & Levi Shick. Member of Board of Education of Lake Tp.

Surveyed as above June 11<sup>th</sup> 1887  
 By J. A. Buchanan  
 Co Surv. L. C. O.



Part of Wallace Survey No. 13393  
 Surveyed for Geo. W. Cline June 24<sup>th</sup> A.D. 1887

INDEXED ON MAP



- a Hickory 12 in N41 E. & links & Sycamore 10. N6 E. 19 1/2 links.
- b Ash & N23 W. 11 1/2 l. & Red oak & S20 W. 23 l.
- c W. Oak 10 in S47 W. 13 l.
- d A. Double Beech S67 1/2 E. 14 l.
- e A. Buckeye & S40 W. 23 1/2 l.
- f A. Pigeon oak & N6 1/2 W. 22 l.
- g A. Sycamore 10. N87 W. 15 1/2 l.
- h A. Hickory 6 in. N61 E. 6 l.
- i A. Small elm North 1 foot.
- k A. Small ironwood E. 1 foot
- l A. Small ash
- m A. Wild Cherry N28 1/2 W 15 l.
- n Oak & ironwood
- o Post near a fence

Surveyed as shown by above plat by  
 M. H. McCormick Deputy of  
 S. A. Buchanan County Surveyor L. C. O.

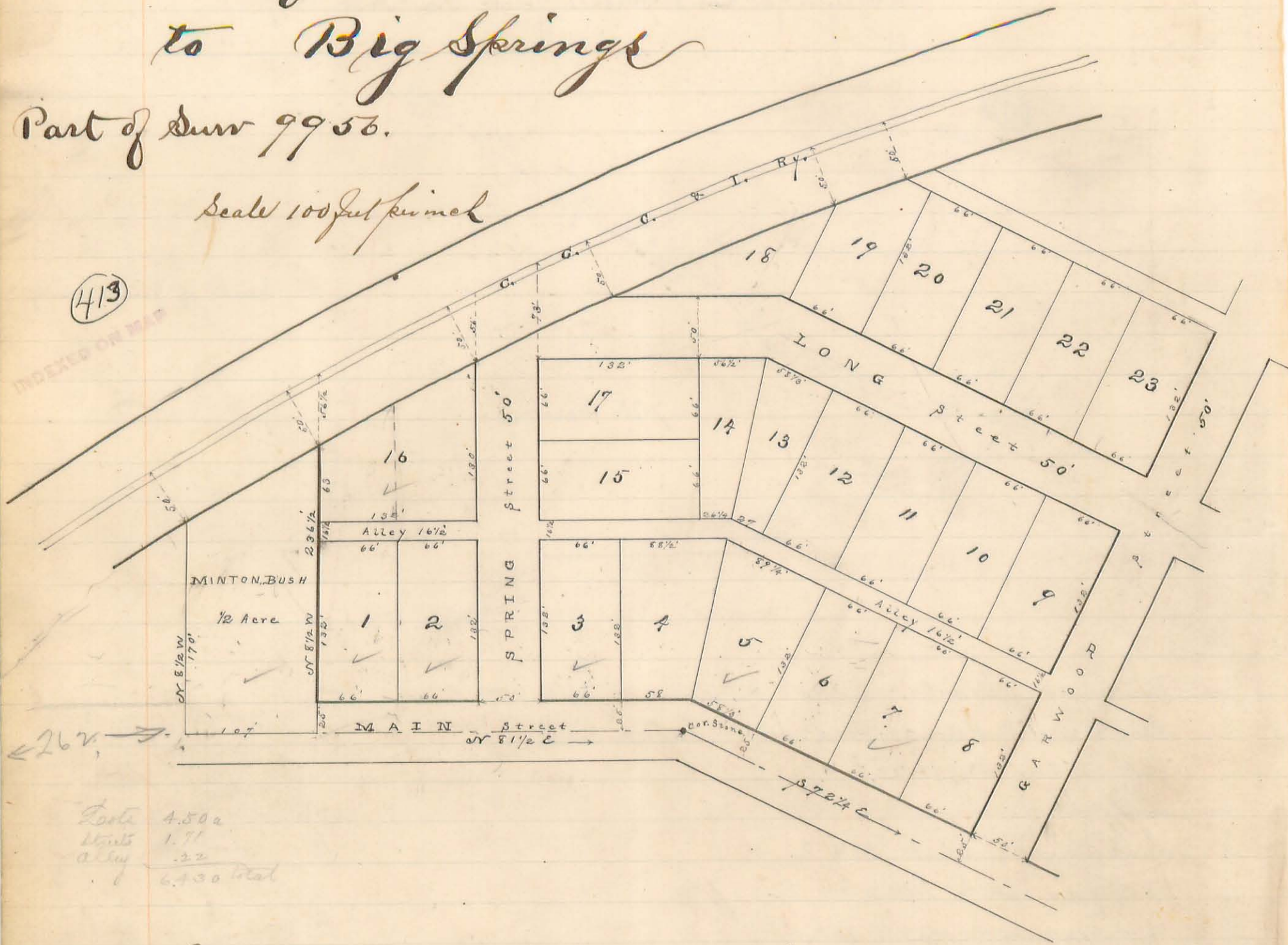


# Plat of Garwoods Additions to Big Springs

Part of Surv 9956.

Scale 100 feet per inch

(413)



Lots 4.500  
 Streets 1.71  
 Alley .22  
 6.430 total

I the undersigned Surveyor do hereby certify the above to be a correct plat of Garwoods Addition to Big Springs in Logan Co. O. as the same was surveyed & laid out by me on the 13<sup>th</sup> day of June, 1887. All regular lots are rectangular in shape & 66 feet by 132 feet in size. Fractional lots are in shape & size in feet as shown by plat. Main street is 25 feet wide from center to north side and Spring. Long & Garwood streets are 50 feet wide. Alley is 16 1/2 feet wide. The south boundary of the C. C. C. & S. Ry. right-of-way is 50 feet from the north rail of rail road. The course of west Main st is N 87 1/2° E & the course of east Main st is S 72 1/4° E.

S. A. Buchanan  
 Co. Surv. L. C. O.

Field notes Book 97  
 Page 124 - To 127

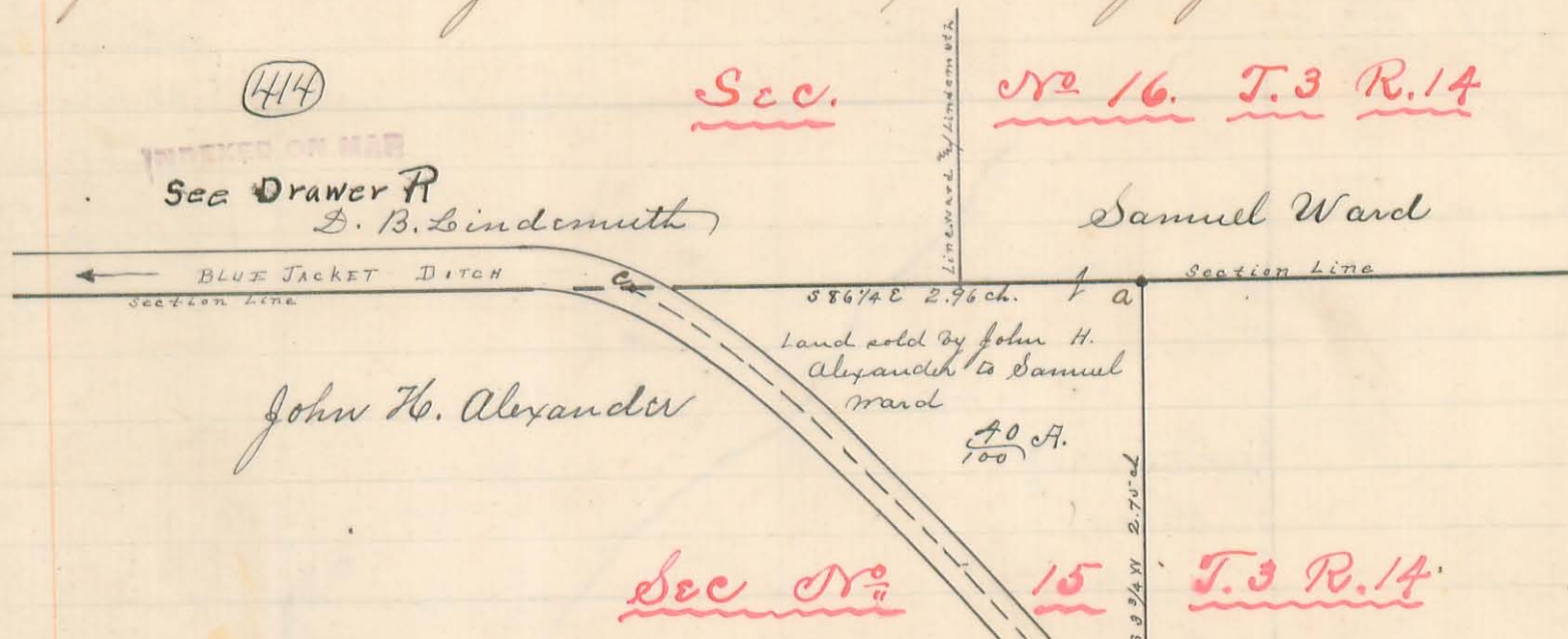
51  
 55  
 132  
 107  
 406

9.80  
 66  
 608  
 604  
 668  
 406  
 262



Part of N. W. Quarter Sec 15. Town 3. Range 14.

Surveyed for John H. Alexander and Samuel Ward being part of the north west quarter of Sec 15 town 3 Range 14. as per agreement made for boundaries by said Alexander and Ward July 24<sup>th</sup> 1882.



- a stake in line of Alexander and Ward and in north line of Sec No 15 T. 3 R. 14 from which a willow 4 feet diam bears N 3 3/4 E 11 links and an Elm 14 inches diam bears S 79 W 49 links
- b post in center of channel of Blue Jacket Ditch, at S 33 3/4 W 2.75 chains
- c post in center of channel of Blue Jacket Ditch and in section line c to a with section line S 86 1/4 E 2.96 chains passing corner to Ward and Lindemuth at about 2 chains.

Surveyed as shown above July 30<sup>th</sup> 1887  
By S. A. Buchanan  
Co. Surv. L. C. O.



# Plat of Section No 32. Town 6. Range 8 Surveyed for Moses Smith, Frank Thompson and Mosgrove (owner of Daniel Miller lands).

Jesse Line }  
 Arnold Arthur } chain carrier sworn  
 G. L. Bogart }  
 Frank Thompson make  
 Austin Smith "  
 Andrew Smith "  
 Saml Shely "

415  
 INDEXED ON MAP



at this corner I drove an oak  
 stake 2 1/2" x 2" x 24" to a depth  
 of about 2 feet below surface  
 of ground and planted a  
 bowlder stone 5 1/2" x 9" on top  
 of stake and then planted  
 a second stone on top of  
 first one 8" x 10" x 14"

## Field Notes.

- a North east corner Section 5 Town 7. Range 8. see page 167 of this Book. S to N S 89° W 66 1/2 links.
- N South east corner Section 32 Town 6 Range 8; Black Walnut 16" bearing true to corner Sec. 5) S 89 1/4° W 73 1/2 links. Elm 24"  
 S 21 3/4° E 96 1/2 links. Ald bearing tree gone.
- B gr. sec. cor. Ash 22" S 46° E 104 links, and Ash 22" S 67 3/4° E 53 1/2 links. Ald bearing tree gone.
- C N. E. cor. sec. Ash 36" (original bearing tree down, log and stump remaining.) S 75° E 36 links. From corner as indicated by  
 ash took course and distance S 22° W 23 links and dug up remains of Lynn stump being original bearing tree. made a  
 corner as above and took new B.T. Elm 24" S 88 1/2° W 20 1/2 links & ash 18" S 84° W 12 1/2 links. Stake and stone see above.
- d gr. sec. corner. post. old bearing tree gone.
- e gr. sec. corner. Hickory 6" S 88° E 71 links; Beech 14" (stands in front of hickory) S 88° E 36 links; Sugar 7" S 9 1/2° E 20; Hick. 7" S 88 1/2° W 67 links  
 (20 links)
- f Stone (lime) 5" x 6" x 14" on top of oak stake driven 1 foot below ground surface. Ash 6" S 73 1/2° W 35 1/2 links. Black Walnut 16" S 18° E 11 links  
 Elm 5" S 14° W 48 1/2 links.
- g Stone (lime) 2" x 6" x 20" Red Oak 18" S 47 1/4° E 72 1/2 links. Hickory 5" S 10 1/2° W 53 links
- h gr. sec. corner. in center Hall & Whitney pike, Burr Oak 12" S 31 1/2° E 106 links. Red Oak 16" S 65 1/4° E 73 links.
- i south west corner sec. in center pike. Hickory 2" S 85 1/2° E 29 1/4 l, Hickory 18" S 60 1/2° E 70 l, Cottonwood 5" S 81° E 73 1/4 links
- j gr. sec. cor. Found remains of old B.T. dye 60" from which located corner S 72 1/2° W 17 links and took new B.T. Red Oak 36" S 2 1/4° W 54 1/2 l  
 Pigeon Oak 36" S 81 3/4° E 120 l. & ash 9" S 40 1/2° E 122 links
- k Red Oak 16" S 50 3/4° W 52 3/2 links & Hickory 2" S 16° E 38 1/2 links
- l Pigeon Oak 14" S 49° W 130 l. Hickory 16" (stands almost in front of oak) S 43 1/2° W 90 1/2 l. Ash 10" S 5° E 94 links
- m Jack Oak 5" S 77 1/2° W 25 l. & white ash 14" S 4 1/4° W 46 links

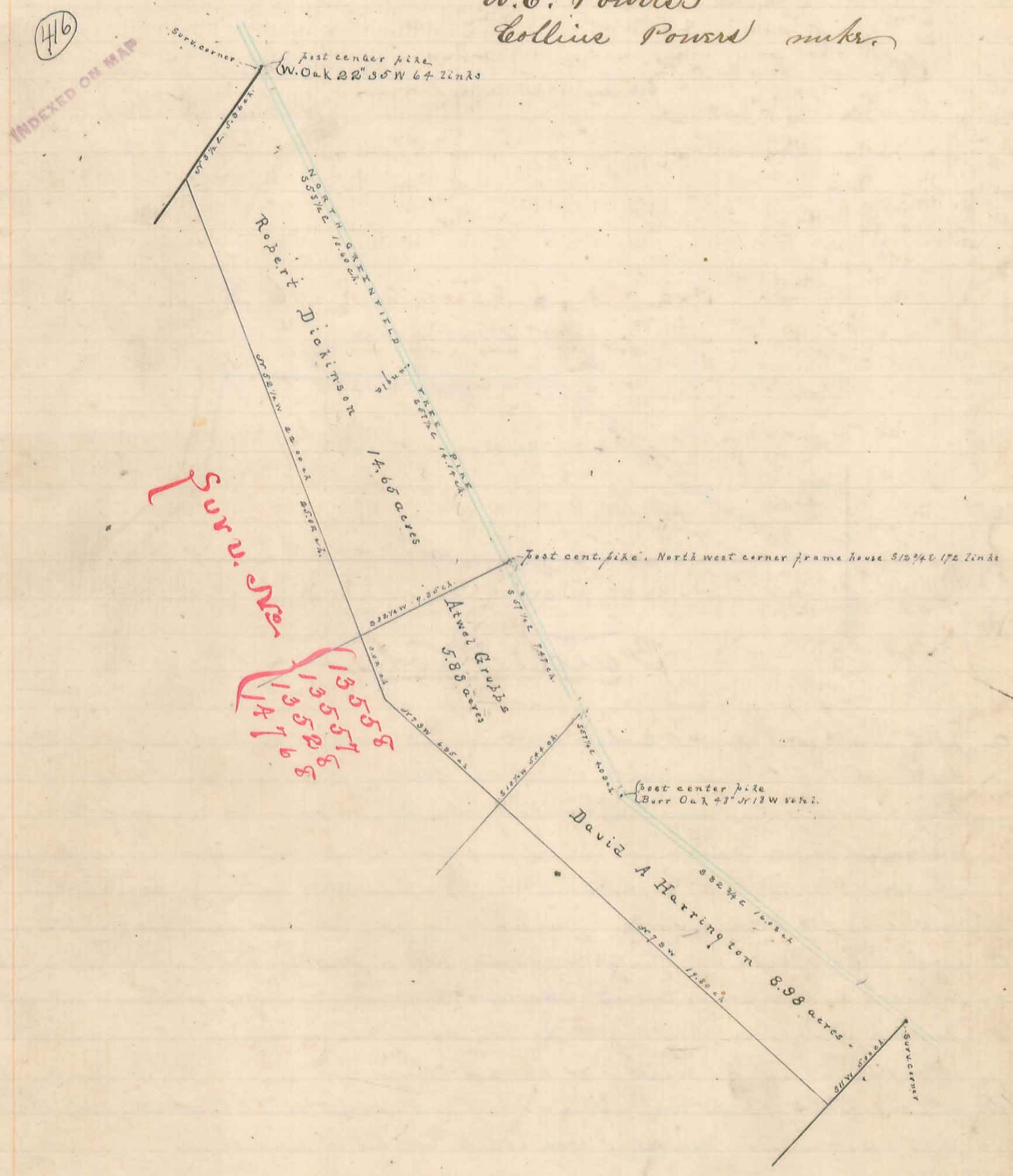
All the corners shown above in Sec 32 were located and established by this survey. Distances in chains and courses by present magnetic bearings as shown on plat.

Surveyed as shown above Nov. 17, 18 & 19, 1887  
 By S. A. Buchanan Esq. Surv. L. Co. O.



Part of Durr. <sup>13558</sup><sub>13567</sub><sup>13528</sup><sub>14768</sub> in Perry Tp.

Surveyed on request of B. R. Crown. Clerk. U.S. Dist. & Cir. Courts.  
being tract described in McArthur mill case.  
Harley Powers } chain carrier, sworn  
W. E. Powers }  
Collins Powers mkr.



Surveyed as shown above  
September 6<sup>th</sup> 1886  
By S. Buchanan  
Co. Durr. L. C. O.



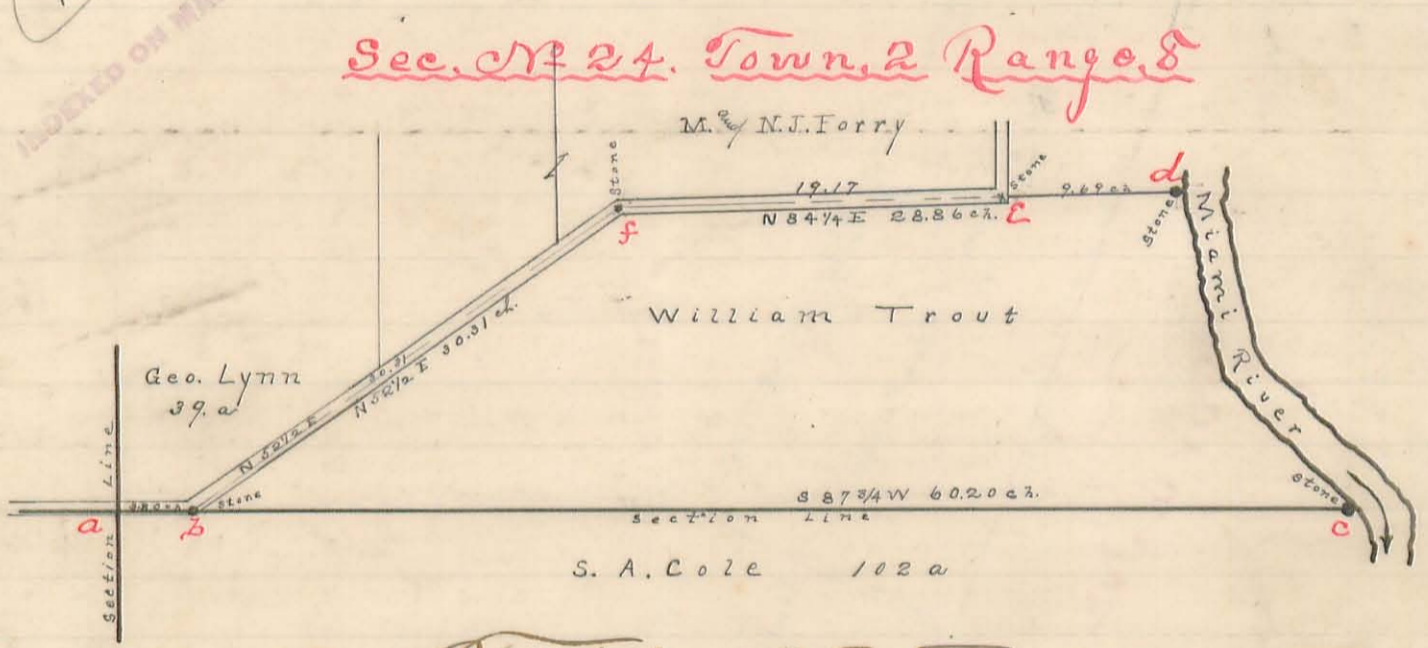
Plat of South part of Sec No 24. Town 2 Range 8

Surveyed for William Trout & others for the purpose of locating and establishing the lines and corners bounding Trouts land.

Edwin Lowe } chain carriers sworn. William Trout } markers  
 James Lowe } William Melvin }

Bloomfield Twp

417



Field Notes

- a post. south west corner to Section 24. From a to f. N 87 3/4 E about 3.50 chains. corner a not located
- b south west corner to William Trout in south line of section. at this corner found remains of 2 fecch trees  
 " being remains of orig. bearing trees, and living white oak <sup>20"</sup> also bearing tree by survey of Co. Surv. 1876,  
 " and located corner by course and distance from them. planted boulder stone 8"x9"x17" and took following  
 " monuments, W. Oak (old B.T. see above) 20" S 51 1/2 E 28 1/2 links. Black Walnut 15" N 73 E 120 links <sup>2</sup> of south  
 " east corner log. dwelling house N 53 1/4 W 149 links. This corner stands at south side of angle in road.
- c south east corner Sec 24. Planted boulder stone 8"x9"x16" at 12 links west of edge of water in River.  
 " W. Hickory 23" (old Bearing Tree) S 45 E 17 links. This tree stands on edge of bank and is partially undermined  
 " by wash from River. Hackberry old B.T. had evidently been washed away. Took new B.T. viz. W. Hickory  
 " 18" S 69 1/4 W 28 links & Hackberry 30" S 27 1/4 W 87 links
- d N.E. corner Trout. Planted boulder stone 5"x13"x15" on River bank 43 links from water edge. W. Oak 28" (old  
 " B.T.) S 26 E 24 links. Red. Oak 12" S 72 W 42 links. & W. Oak 12" N 16 E 47 links.
- e Boulder stone planted in angle of road and in line from d to f. stone 5"x8"x10". From d to e 9.69 ch.
- f Lime stone 9"x12"x16" in angle of road and north west corner to Trout. old B.T. gone. Took new one viz.  
 " W. Oak 14" N 8 E 81 links & W. ash 24" N 51 1/4 W 14 1/2 links

Boundary lines to Trouts land as follows. b to c with south line of Sec 24 N 87 3/4 E 60.20 ch.; c to d with Miami River and the meanderings thereof; d to f S 84 1/4 W 28.86 ch passing stone at e at 9.69 ch, (beginning measurement from stone at d); f to b S 52 1/2 W. 30.31 ch.

Stones shown at each of the corners above were planted by the undersigned surveyor in presence of William Trout Edwin Lowe, James Lowe & William Melvin; S. A. Cole was duly notified of and consented to making of survey but was not present.

Surveyed as shown above Dec 7<sup>th</sup> / 8, 1887  
 By S. A. Buchanan  
 Co. Surv. L. C. O.



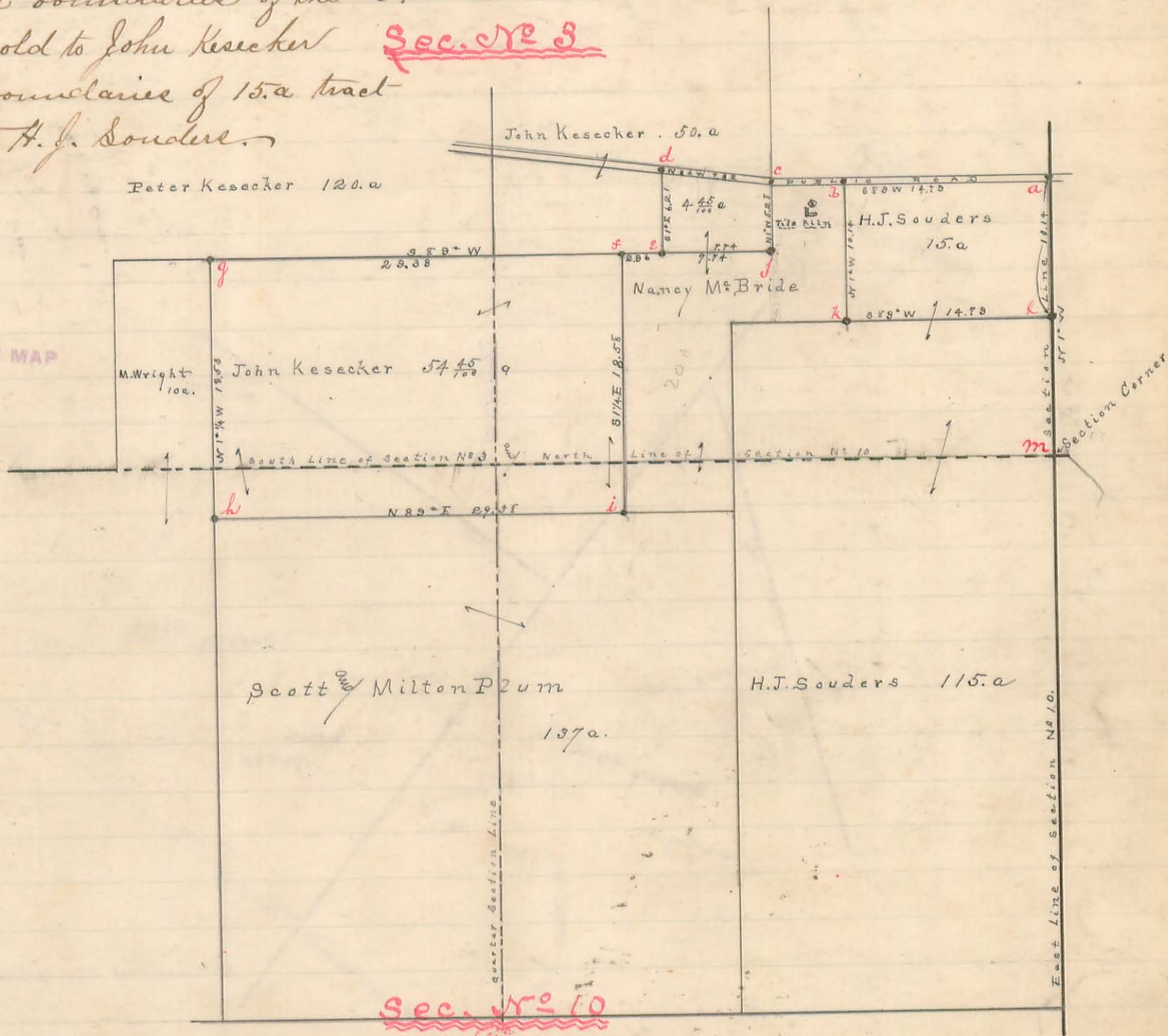
# Plat of parts of Sections 3 & 10

## Town 7. Range 8.

Surveyed for Seth McBride & others  
to locate boundaries of the 54.45 a  
tract sold to John Kesecker Sec. No 3  
& of the boundaries of 15 a tract  
sold to H. J. Souders.

(418)

INDEXED ON MAP



Field Notes  
Book 300 Page 174 to 177

### Field Notes

- a post in east line of Sec. No 3 Town 7 Range 8 and in center of public road. N 1° W 10.14 ch. from cor. b.
- b " " center of public road S 89° W 14.79 chains from a.
- c " " " " " " S 89° W about 20.00 chains from a.
- d " " " " " " N 84° W 7.82 ch. from c; Burr Oak 2" S 24° W 3 1/2 links & White Oak 2" S 26 1/2 E 3 1/2 links
- e " " north line Nancy McBride land. Burr Oak 2 1/2" S 82° W 15 1/4 links & White Oak 4" N 28° E 11 links
- f " north east corner to 54.45 a sold to John Kesecker. 29.38 chains from corner g & 2.96 chains from cor. c; g to j. transit line
- g " north west corner to 54.45 a (about 15 chains north of south line of sec 3), White Oak 7" S 1 E 7 1/2 links & White Oak 20" S 88 1/4 E 75 l.
- h " south west cor. 54.45 a & N. W. cor. S & M. Plum. Maple 18" (Old B. Tree down) S 68° W 5 l. & Elm 10" N 80° E 5 1/2 l. & Maple 24" S 86 1/2 E 28 1/2 l.
- i " in north line Plum, S. E. cor 54.45 a N 89° E 29.38 chains from h. & S 1 1/4 E 18.55 chains from cor. f.
- j " formerly south east cor to John Kesecker 50. a. White Oak 5" N 52 3/4 W 10 3/4 links & White Oak 3" N 2 1/2 W 10 1/2 links
- k " south west cor 15 a S 1 E 10.14 ch. from b & S 89° W 14.79 ch from l.
- l " in Sec line at S. E. cor 15 a & north east cor of south half of the south east quarter of the south east quarter of Sec 3.
- m South east corner of Sec No 3 & north east corner of Sec No 10.

Surveyed as shown above  
Feb 6<sup>th</sup> 1888  
By S. A. Buchanan

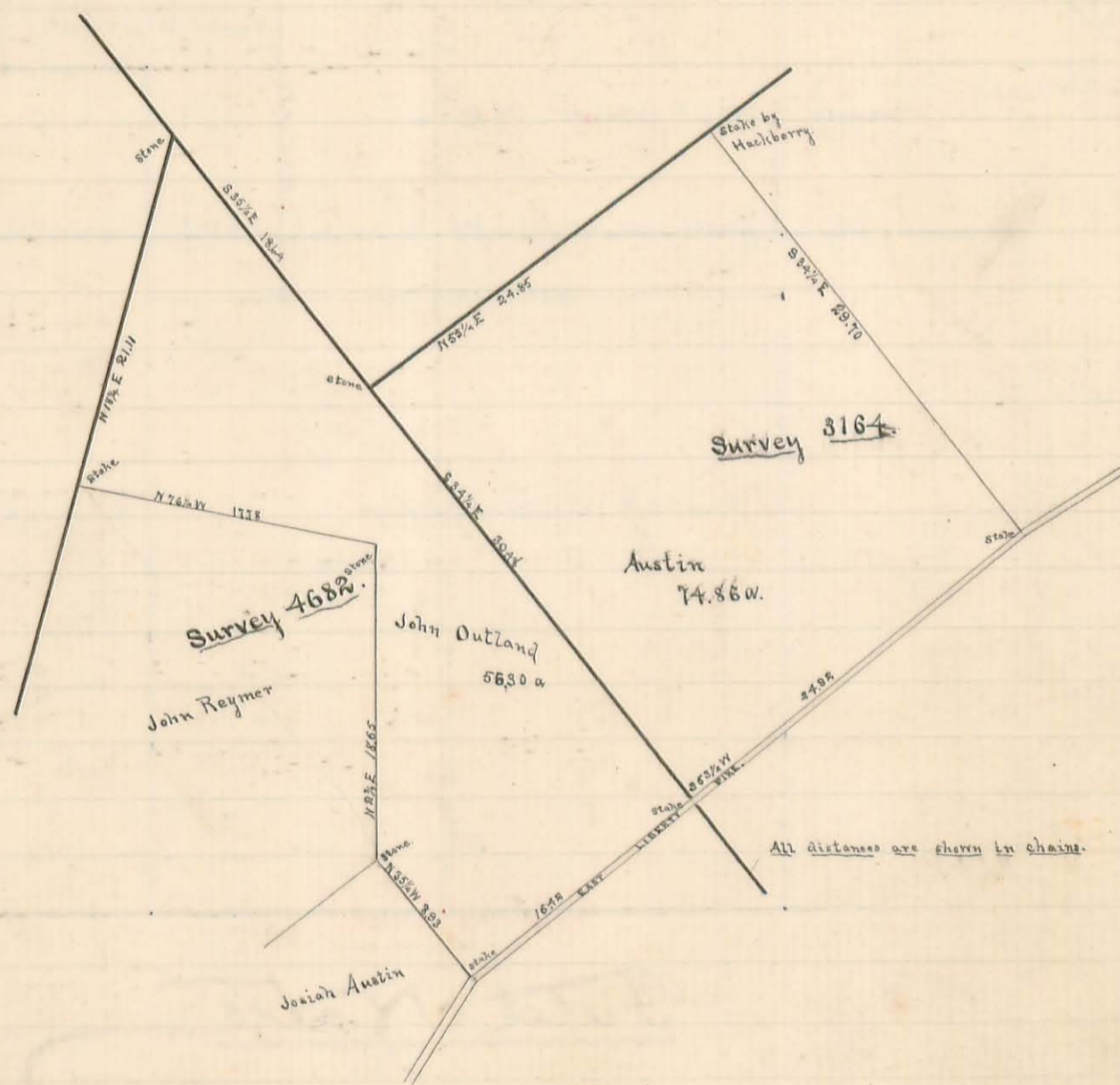


Part of Surveys Nos 3164 and 4682. in Perry Township.

Surveyed for John Outland, to ascertain amount of land in each survey owned by said Outland and Austins heirs.

419

INDEXED ON MAP

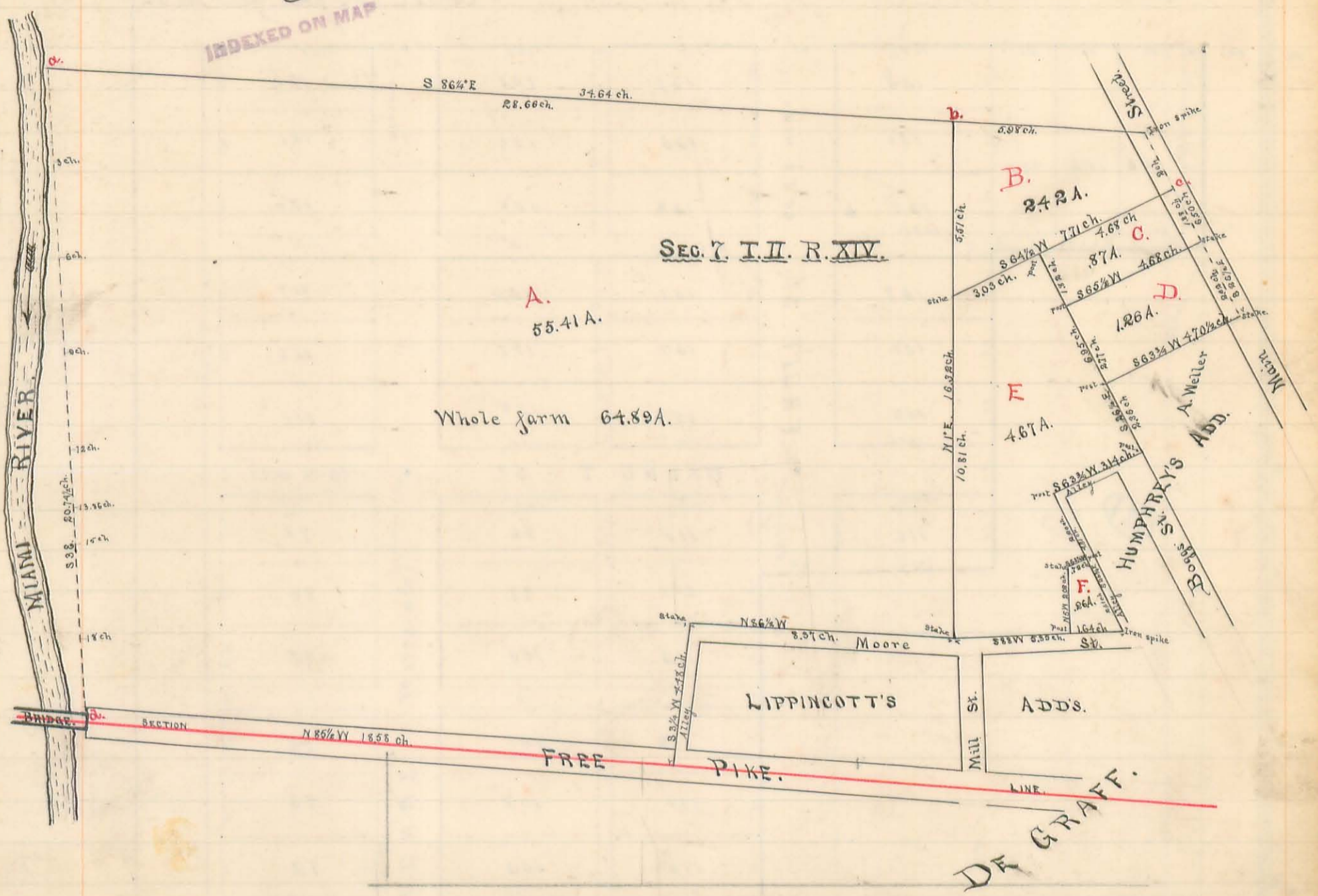


Surveyed Jan. 5. 1858 By J. C. Wondra Co. Surv.



Part of Section No. 7. Town. 2. Range 14. Miami Township.  
Surveyed for Samuel Lippincott Admr. A. J. Lippincott estate

(420)



Field Notes

- a. An iron spike in a double sycamore tree on east bank of Miami River.
- b. Walnut tree 15" in Lippincott's line.
- c. Iron spike in center of Main Street De Graff O. wit: weather strip on S.W. corner Samuel Wilke frame house, N 77 1/2 E 44 1/4 feet, also walnut tree 18" in Lippincott's yard, S 21 W 71 1/2 feet.
- d. Center of East end of a covered wooden bridge over the Great Miami River.

Offsets from line a-d to low water mark east side Miami River.

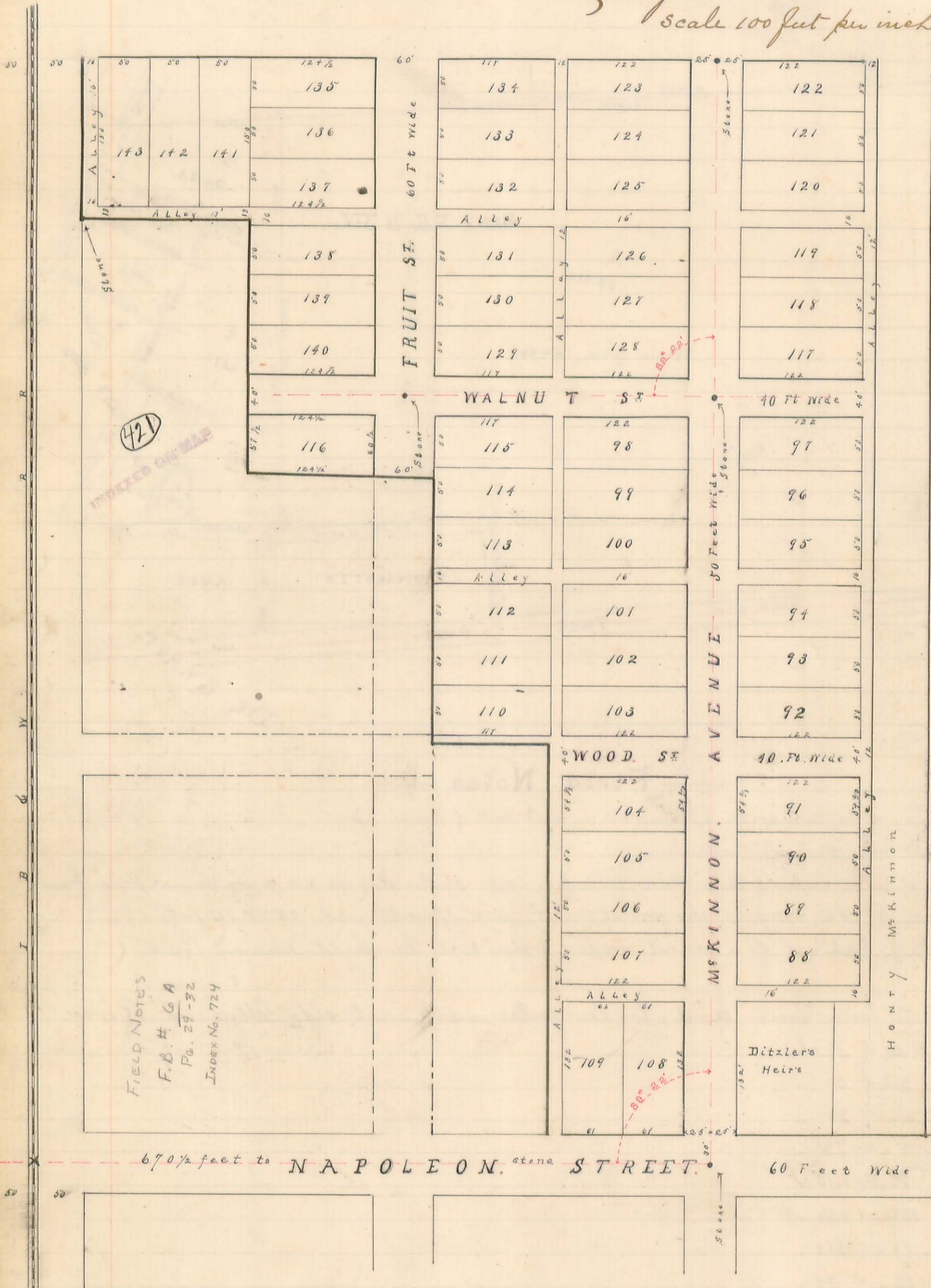
At a = .17 ch.

" 3 ch = .20 "
" 6 " = .35 "
" 9 " = .73 "
" 12 " = 1.10 "
" 13.86 " = 1.38 "
" 15 " = 1.18 "
" 18 " = .75 "
" d = .71 "

Surveyed Feb. 2. 1888. by  
James C. Wondra Co. Surveyor.



Plat of Mr. Kinmons 1<sup>st</sup> & 2<sup>nd</sup> Additions  
 to Huntsville Logan Co. Ohio  
 Scale 100 feet per inch



page 197 opposite



Mc Kinnons 1<sup>st</sup> & 2<sup>nd</sup> Addition to Huntersville Ohio

1<sup>st</sup>  
2<sup>nd</sup>

Addition comprises Lots Nos 88 to 116 inclusive

" " " " 117 " 143 "

Lots No 88 to 107 inclusive, excepting lots 91 & 104, are each 50 feet by 122 feet. Lots No 91 & 104 are each 54 1/2 feet by 122 feet. Lots 108 & 109 are each 61 feet by 132 feet. Lots 110 to 115 inclusive are each 50 feet by 117 feet. Lot 116 is 60 1/2 feet on Fruit street, 57 1/2 feet on west end by 124 1/2 feet on north and south. Lots 117 to 128, <sup>inclusive</sup> are each 50 feet by 122 feet. Lots 129 to 134 inclusive are each 50 feet by 117 feet. Lots 135 to 140 inclusive are each 50 feet by 124 1/2 feet. Lots 141, 142 & 143 are each 50 feet by 150 feet. Wood & Walnut streets are each 40 feet wide. Mc Kinnon Avenue is 50 feet wide. Fruit street is 60 feet wide. Alleys and all streets and lots are of the widths and dimensions respectively as shown on the plat. The angle included between the center lines of Mc Kinnon Avenue and Napoleon street and Mc Kinnon Avenue and Walnut street on the north and west sides of said streets is 89 degrees and 22 minutes. I planted good and suitable stone monuments on center line of Mc Kinnon Avenue at intersection of center line of Napoleon and Walnut streets and on line with north sides of lots 122 & 123. I also planted similar stone monument at the intersection of center lines of Walnut & Fruit streets. Each of said stone monuments were marked X on top. Said monuments were as follows. On Napoleon street, granite boulder 7" x 9" x 12", planted level with top of road. On Walnut & Mc Kinnon Av. granite boulder 9" x 9" x 12" top about 2 inches above ground surface. At north end of Mc K. Av. on north lines of lots 122 & 123 granite boulder 12" x 15" x 24", top about 3 inches above ground surface. On Walnut & Fruit streets, boulder 8" x 10" x 13", top 12 inches below natural ground surface. I made center line of Mc K. Av. a transit line and planted stones on Napoleon & Walnut streets 758 feet and 8 inches apart and from stone on Walnut street to stone at north end of Mc Kinnon Av. 336 feet. The center line of Walnut street is a transit line and distance between stone monuments is 306 feet. The distance on Napoleon street from center of main track I. B. & W. Ry. to stone on Mc K. Av. is 670 feet & 6 inches. The present bearing of Mc Kinnon Avenue is S 81 1/2 E and of Walnut street is N 72 3/4 W. The stone at angle of alley on east side of I. B. & W. Ry. is a lime stone about 6" x 8" on top an old land mark found in place when laying out alley.

I hereby certify the foregoing to be a true and correct plat and return of survey as made by me Feb. 17<sup>th</sup> / 18<sup>th</sup> 1888.

J. P. Buchanan

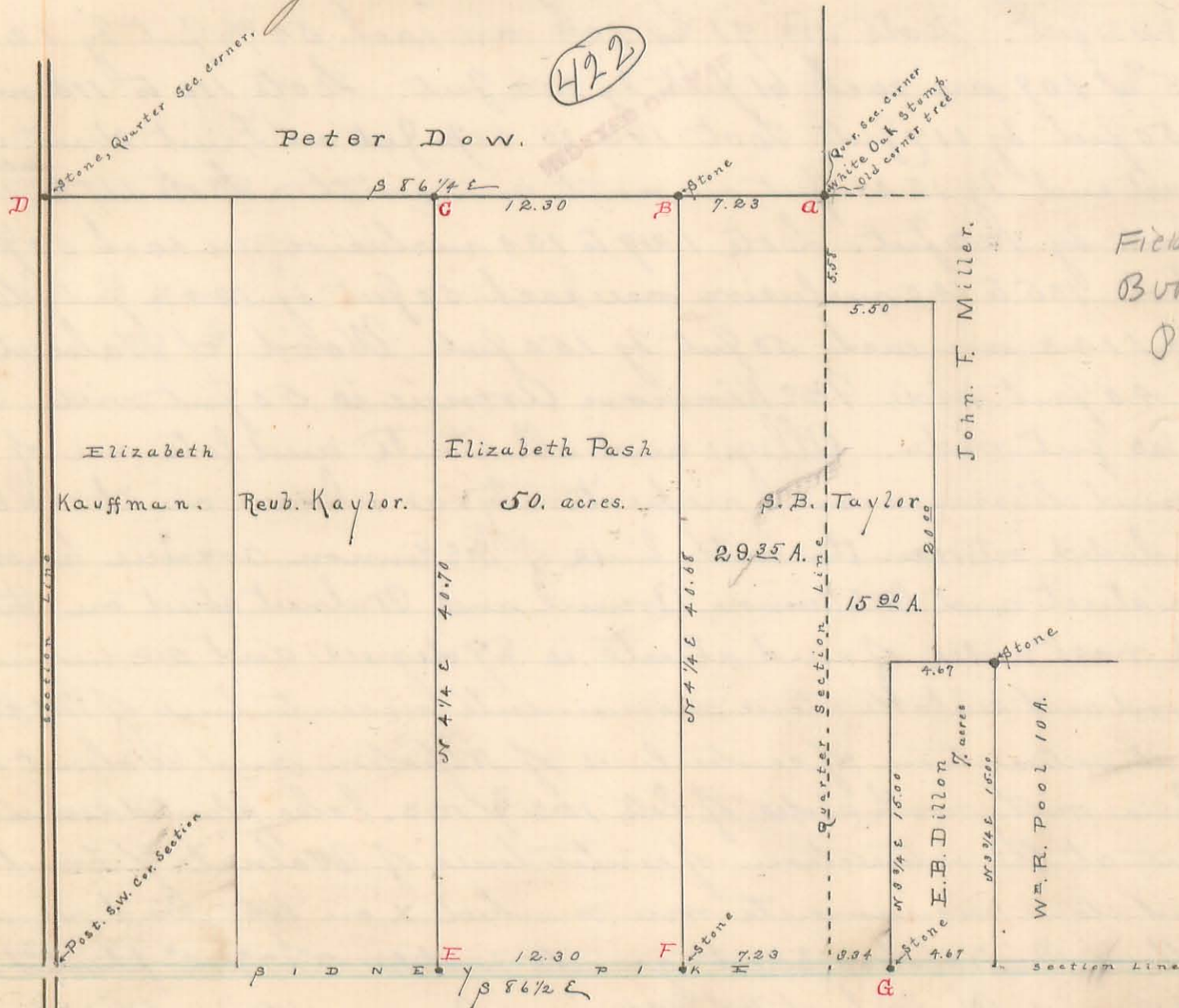
Surr.



Plat of part South half Sec. No 5. T.3. R. 14.

Surveyed for Dr. Scarf Admir Estate S.B. Taylor for purpose of locating boundaries of lands sold to John F. Miller

Frank Whitehill chain carriers sworn.  
A. J. Millikin



Field Notes  
Book 97  
Page 137

Field Notes

- A. White Oak stump, 24" remains of old corner tree. Hopkins 1841.
- B. Boulder stone 18"x8"x7". Black walnut 24" S 16 1/4 E 115 1/2 links of Black walnut 30" (double) S 58 1/2 E 131 1/2 links
- C. Stake. Black walnut 9" S 6 1/2 E 15 1/2 links
- D. Stone in center of road. quar sec corner. Hopkins 1841.
- E. Post in Sidney pike corner made by David Hopkins Co. Surv. 1841. found remains of old walnut witness tree taken by Hopkins and located corner by it took new witness or bearing tree. Hickory 24" N 8 1/4 W 44 links
- F. Boulder stone, 18"x10"x9". Black walnut 18" N 42 1/4 E 47 1/2 links
- G. Boulder stone 18"x9"x8"

I located corners B & F by measurement from corners C & E. and located and established corners B, F & G and planted stones as above. Courses and distances in chains are as shown on plat

Surveyed as shown above  
March 2nd 1888 by  
S. A. Buchanan  
Surv.



# Plat of the estate of M. M. Reams. (decd.)

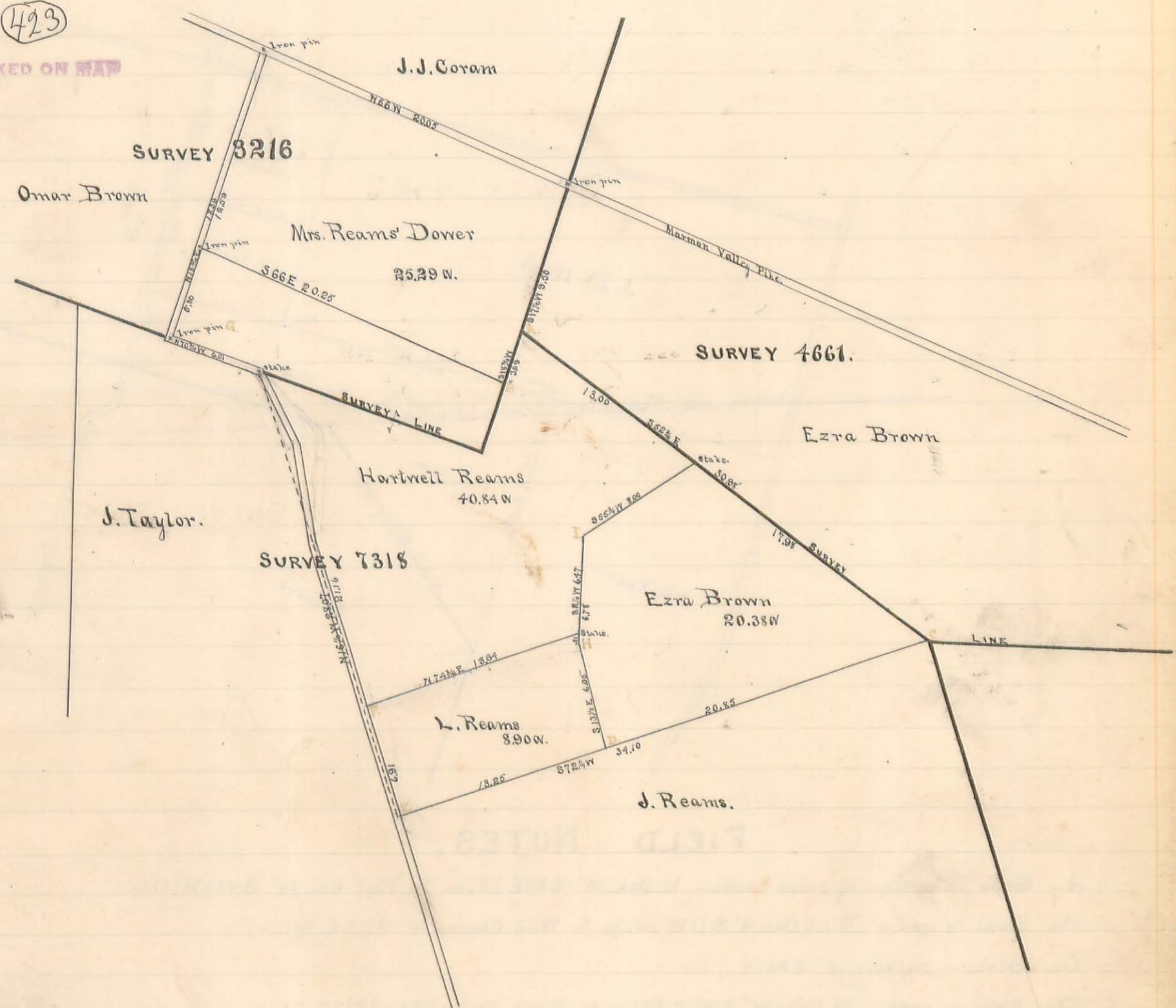
Surveyed for J. M. Reymur Administrator. Part of Surveys Nos. 3216, and 7318. in Jefferson Township.

J. M. Reymur } chain carriers.  
F. Watkins }

March 7<sup>th</sup> and 9<sup>th</sup>, 1888.

(423)

INDEXED ON MAP



## Field Notes.

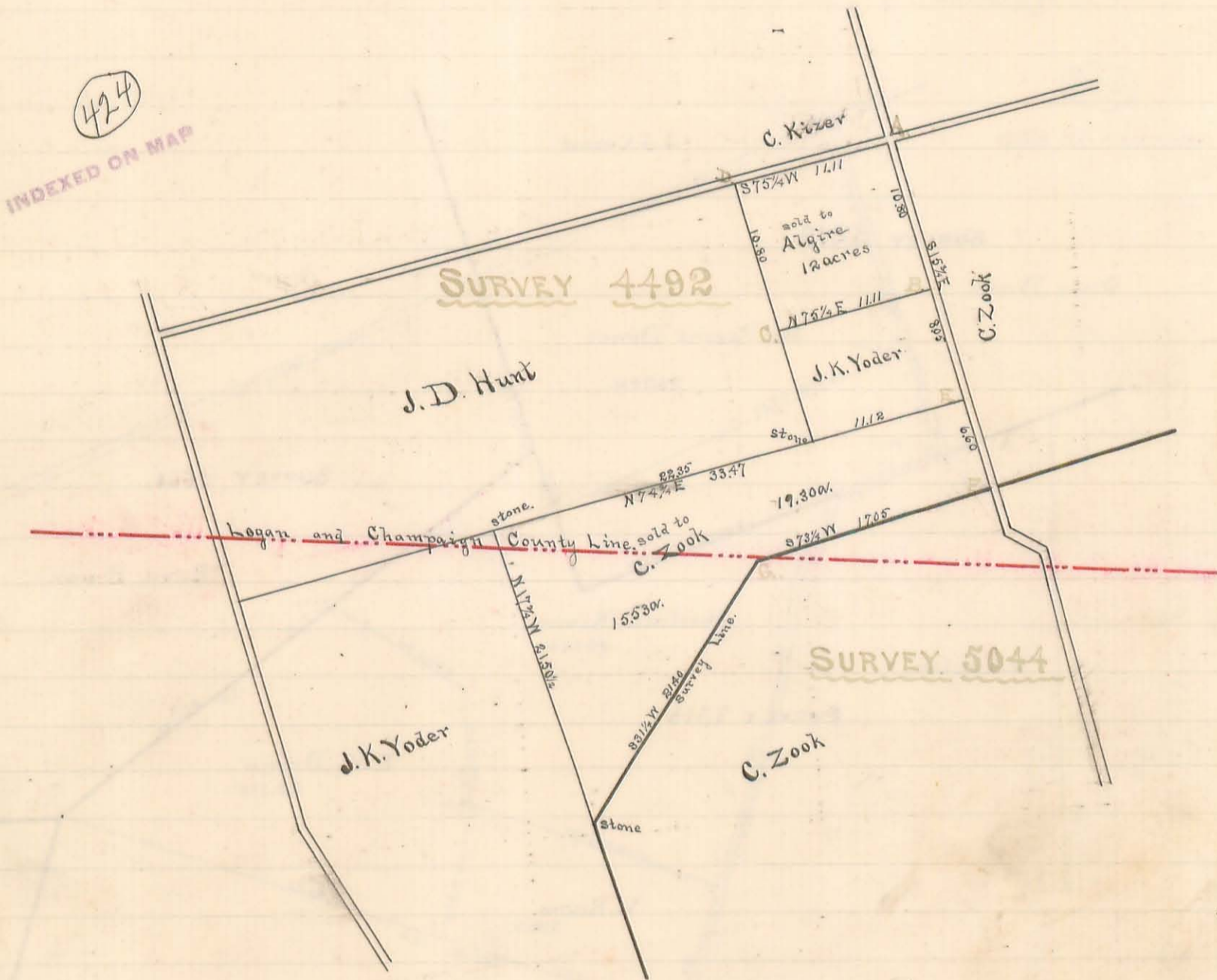
- A- Iron pin - White Walnut 12" S64½E 372ks.
- B- Stake - Ash 24" S59¾W 39½2ks.
- C- .. - Beech 18" N82½W 642ks.
- D- .. - Oak Stump 30" N22½E 452ks.
- E- Iron pin in road - Wild Cherry 16" S49E 572ks.
- F- Stone in road - Apple tree 8" S70¼W 31½2ks. Also Apple tree 6" N56¼W 502ks.
- G- Iron pin in road - Sugar tree 8" N42½W 492ks.
- H- Ironwood tree 8" at corner.
- I- Limestone 7" X 5" on top.

James C. Wouders,  
Co. Surveyor, Logan Co. Ohio.



Surveyed for Jacob K. Yoder,  
Monroe Township

Part of Survey No. 4492,  
March 29, 1888



FIELD NOTES.

- A - Stone in center of cross roads - W. Oak 30" S9 $\frac{1}{2}$ E 75 lks.  $\frac{1}{2}$  Red Oak 14" S48 $\frac{1}{2}$ W 75 lks.
- B - Stake in road - Black Oak 8" S71W 35 lks.  $\frac{1}{2}$  Wild Cherry 10" S77 $\frac{1}{2}$ E 41 lks.
- C - Stake - Hickory 16" S23 $\frac{1}{2}$ E 7 lks.
- D - Stone in road - W. Oak 30" S21 $\frac{1}{2}$ W 59 lks.  $\frac{1}{2}$  Black Walnut 24" S53 $\frac{1}{2}$ E 77 lks.
- E - Stone in road - Black Walnut 6" S85W 31 $\frac{1}{2}$  lks.  $\frac{1}{2}$  Black Walnut (forked) 21" N30E 53 $\frac{1}{2}$  lks.
- F - Stone in west side of road - Black Walnut 10" S34 $\frac{1}{2}$ E 61 $\frac{1}{2}$  lks.
- G - Stone - Burr Oak 36" S33W 49 lks.

S.J. Yoder } chain carriers.  
Levi Simons }

James C. Houdus  
County Surveyor, Logan Co. O.