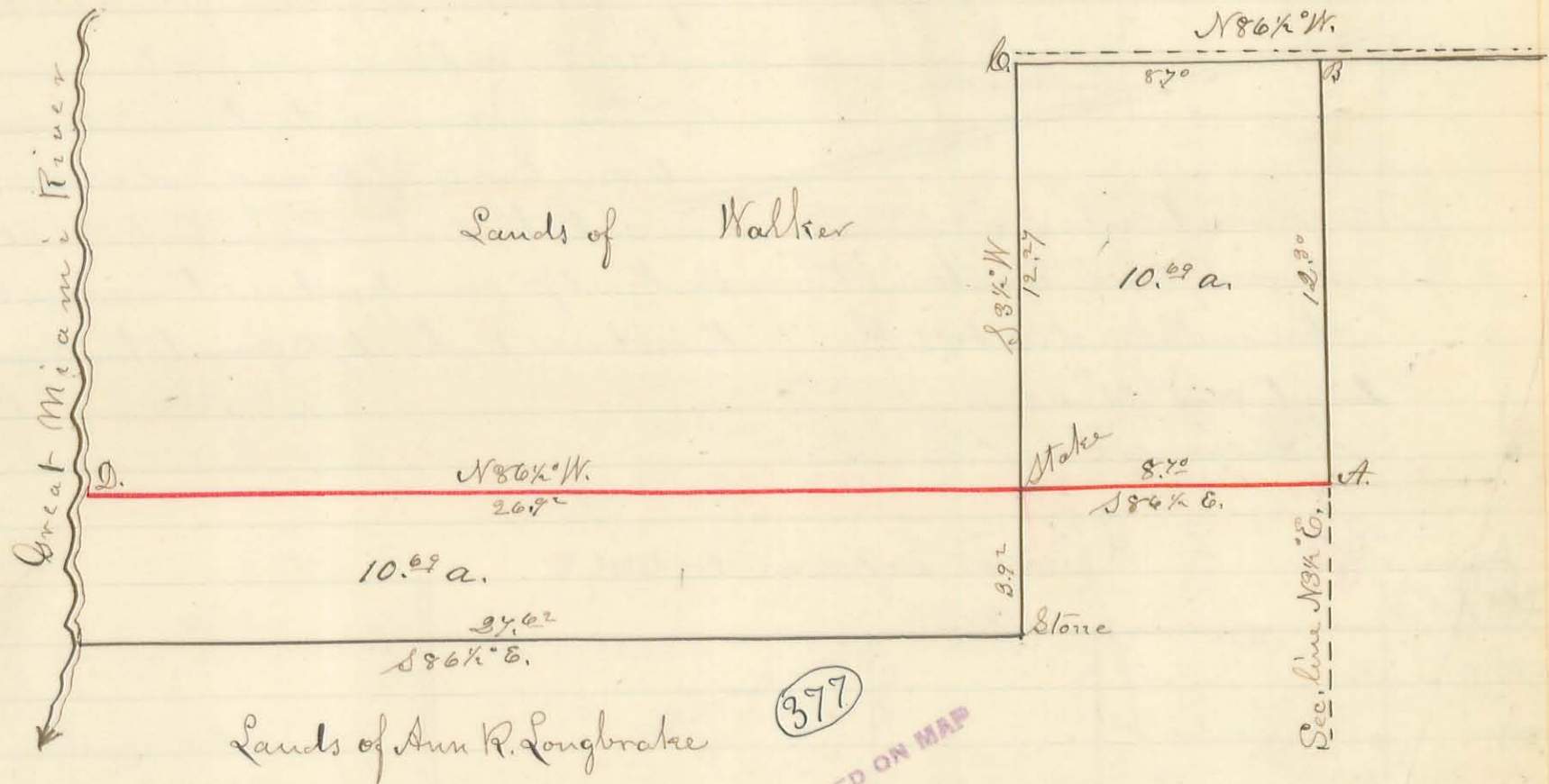


Morning, Edward Clark, A. M^o Ginnis, William Perry, and the Chain Carriers, Richard Poice and Ephraim Scott.

Per. H. C. Moore, Sept. Co. Sur.

Part of Fractional Section No. 16 T. R. 14 (M.R.)



Pleasant and Washington

September 9th A.D. 1885

Surveyed as shown by the above plat on the 31st day of July A.D. 1885, for Ann R. Longbrake & Walker. First for Mrs. Longbrake in said Sec. 16

Beginning at a Stone at the South Side of a private road & in the East line of said Section: thence with the South Side of said road N86 1/2° W. 8.7⁰ Chains to a stake; thence S3 1/2° W. 12.3⁰ Chains to a stake; thence S86 1/2° E. 8.7⁰ Chains to a stake in the East line of said Section; thence N3 1/2° E. 12.3⁰ Chains to the beginning, Containing 10.69 Acres

2nd For said Walker, in same Section, to wit:

Beginning at a Stone heretofore Corner to said Walker's land: thence N3 1/2° Chains to a stake; thence N86 1/2° W. 26.9⁰ Chains to a stake at the river; thence Southward with the Meanderings of the river to a point near a Bur Oak down; thence S86 1/2° E. 27.0⁰ Chains to the beginning, Containing 10.69 Acres. The object of Survey being to establish a line (marked with red ink on plat,) by which an equal number of acres may be exchanged.

- A. = Apple tree N. of E. 42 links.
- P. = Apple tree S. of E. 34 1/2 links.
- B. = Red Oak S. of E. 31 links.
- C. = B. Oak Stump N. & E. 34 links.
- Hicks N 77° E. 28 1/2 links.
- D. = Hackberry 12' Northward 11 1/2 links.

S. A. Buchanan Co. Surveyor
per. M. H. M. Cornick Deput

Part S.W. qr. Section 13. T₇ R₈ E 1st Mer.

December 7th A. D. 1885.

Surveyed as shown by the annexed plat for John Miller, on the 14th day of October A. D. 1885, and described as follows to wit: 1st

Beginning at a stone in a private road N.W. Corner to S.W. qr. of Sec. 13 T₇ R₈ E 1st Mer. thence Eastward 40.²⁵ Chains to Nash Millers Corner, passing middle of gr. at 20.¹⁴ & the N.E. Corner of John Millers land at 30.²¹ chains, where we planted a stone 42 feet East from a white oak tree 28 in. diam. & marked as an original line tree.

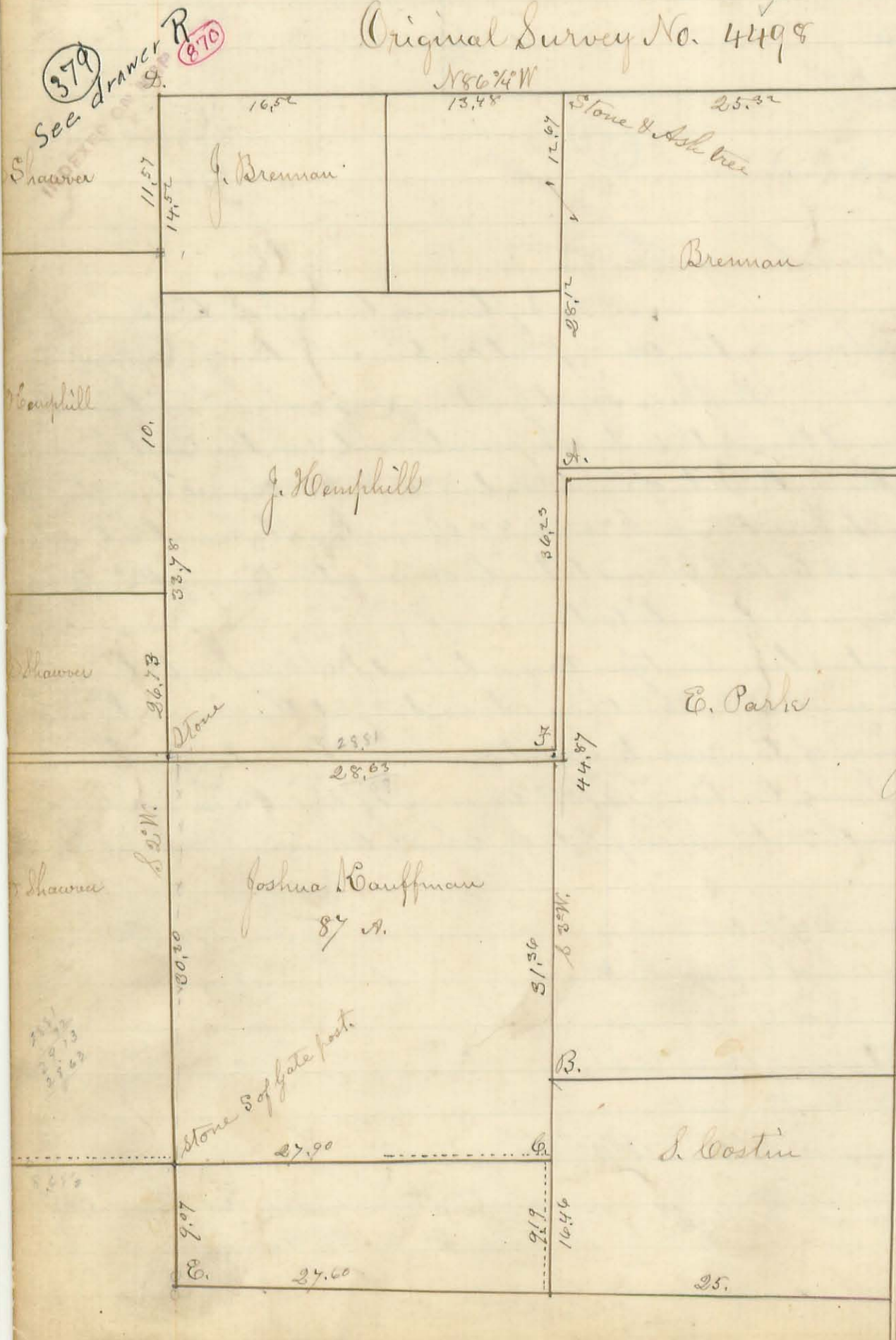
2nd - Beginning at a stone in a Cranberry Marsh 15.¹² Chains East of N.W. Corner of said gr. seci thence S 3/4 E.

28 1/2 chains, to center of N & N. Va Pike; thence with the center of pike Eastward 50 links; thence Northward 78 links to a stone; thence Eastward 7.¹² chains to a stone; thence N 3/4 W. 28 1/2 chains to a stone in N. line of said gr; thence with said line Westward 7.⁵¹ chains to the beginning, containing twenty one (21) acres.

Washington Prop.

S. A. Buchanan Co. Surv.
Jr. M. H. McCormick Deft.

Original Survey No. 4498



Explanation

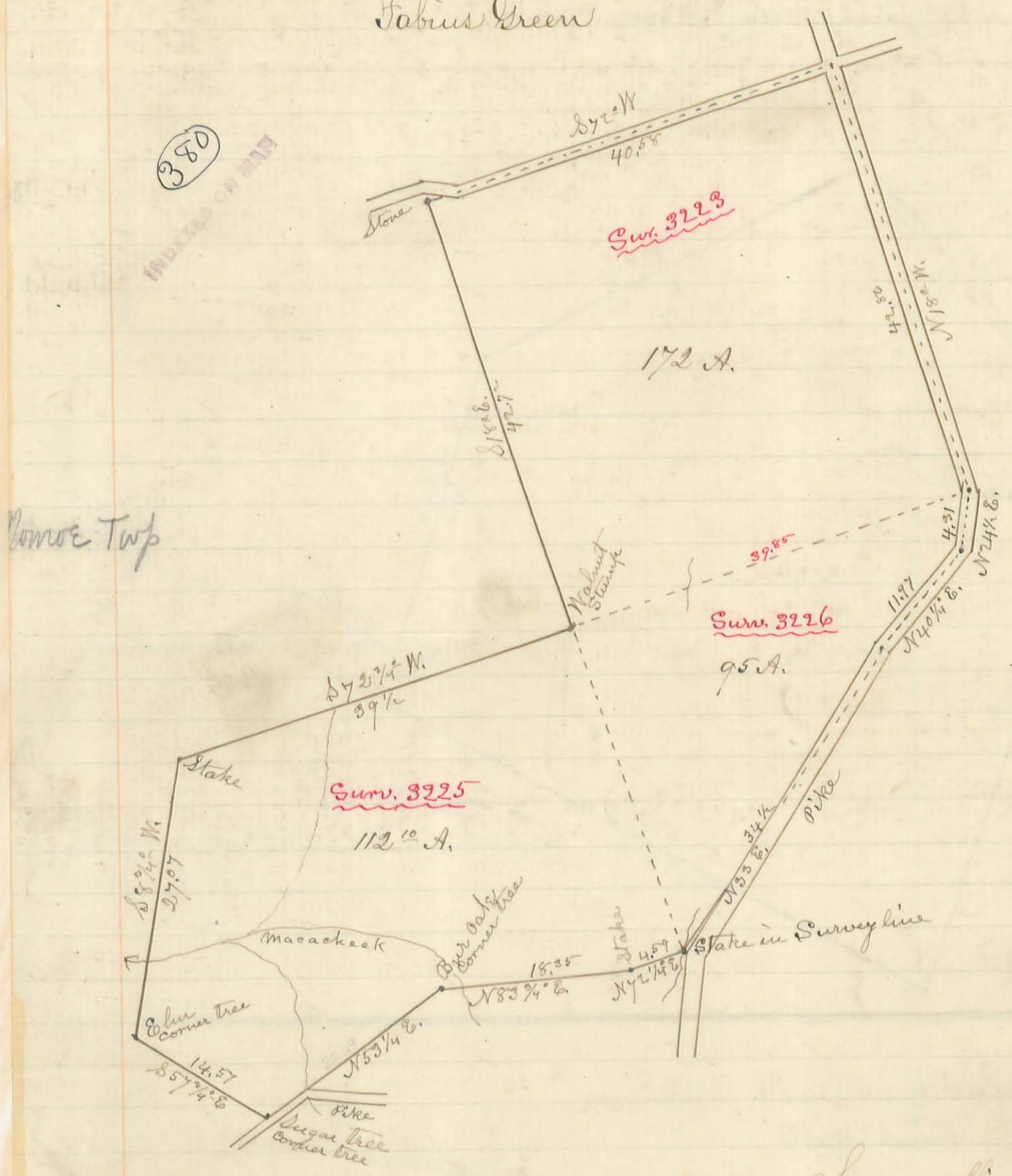
- A. - Line N. & S. 6 feet 3 in. W. of Oak Tree
- B. - Line " " " 2 " E. of White Oak Tree
- C. - Walnut N.E. 17 & Walnut S.E. 16
- D. - Stone & two Black oaks, Ori
- E. - Black Oak & white Oak stump
- F. - Line N & S. passed 32 links West of a stone marked with a cross

Surveyed for Joshua Kauffman
Nov. 16th A. D. 1885.

S. A. Buchanan Co. Surv.
Jr. M. H. McCormick Deft.
Jefferson and Lake Prop.

Parts of Surveys 3223, 3225 & 3226

Jabius Green



Surveyors office Logan County
Bellfontaine O. Dec. 9th A.D. 1885.

Surveyed as shown by the above plat Nov. 5th & 6th A.D. 1885 for Jabius Green
 And described as follows, to wit: Beginning at a stake in the South line of Survey
 No. 3323, & in a free pike; thence with said pike

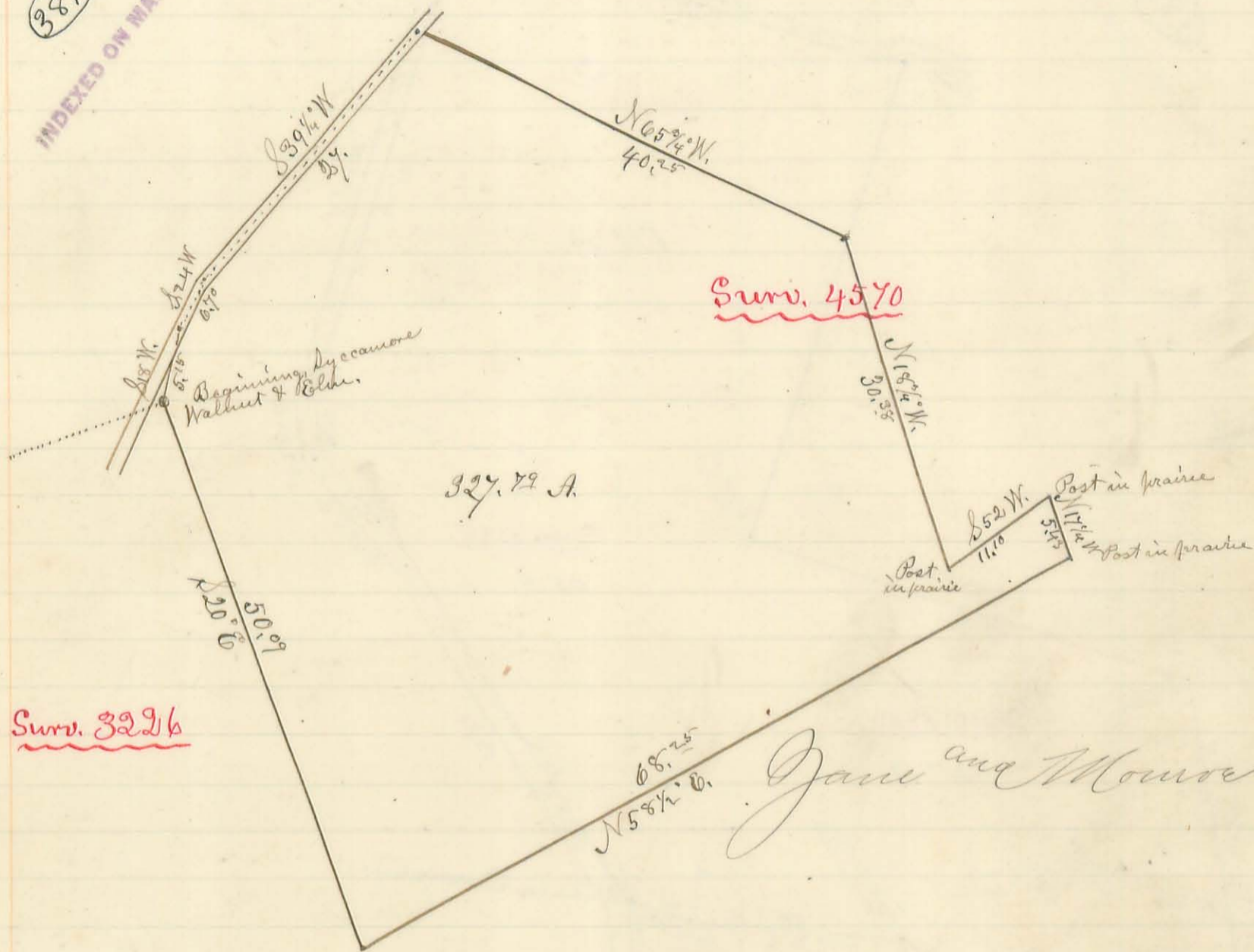
- 1 N 18° W. 42.⁰⁰ Chains to Center of Crossing of said pike and a County Road
- 2 N 72° W. 40.⁵⁰ Chains to a stone 4 feet North of a gate post.
- 3 S. 18° E. 42.⁷⁵ Chains to a stake at West Side of a large Walnut Stump S.W. cor. to S. 3223.
- 4 S 72 1/4° E. 39 1/2 Chains to a stake in the North line of Survey No. 3225.
- 5 S 8 3/4° W. 27.⁰⁷ Chains Crossing Creek at 19 chains to an Elm Corner tree on hill side.
- 6 S 57 1/4° E. 14.⁵⁷ Chains to a Sugar Corner tree at side of a pike.
- 7 N. 53 1/4° E. 20.⁰² Chains to a Burr Oak Corner tree.
- 8 N. 83 1/4° E. 18.³⁵ Chains Crossing Creek at 3 chains to a stake.
- 9 N. 72 1/4° E. 4.⁵⁹ Chains to a stake in Survey line near pike.
- 10 N. 33° E. 34 1/2 Chains to a stake in pike North of a school house.
- 11 N. 40 1/4° E. 11.⁹⁷ Chains to a stake in pike.
- 12 N. 24 1/2° E. 4.³¹ Chains to the place of beginning, containing 379.¹⁰ acres.

S. A. Buchanan Co. Survs.
by M. H. McCormick, Deft.

Part of Survey No. 4570
Micajah Green

381

INDEXED ON MAP

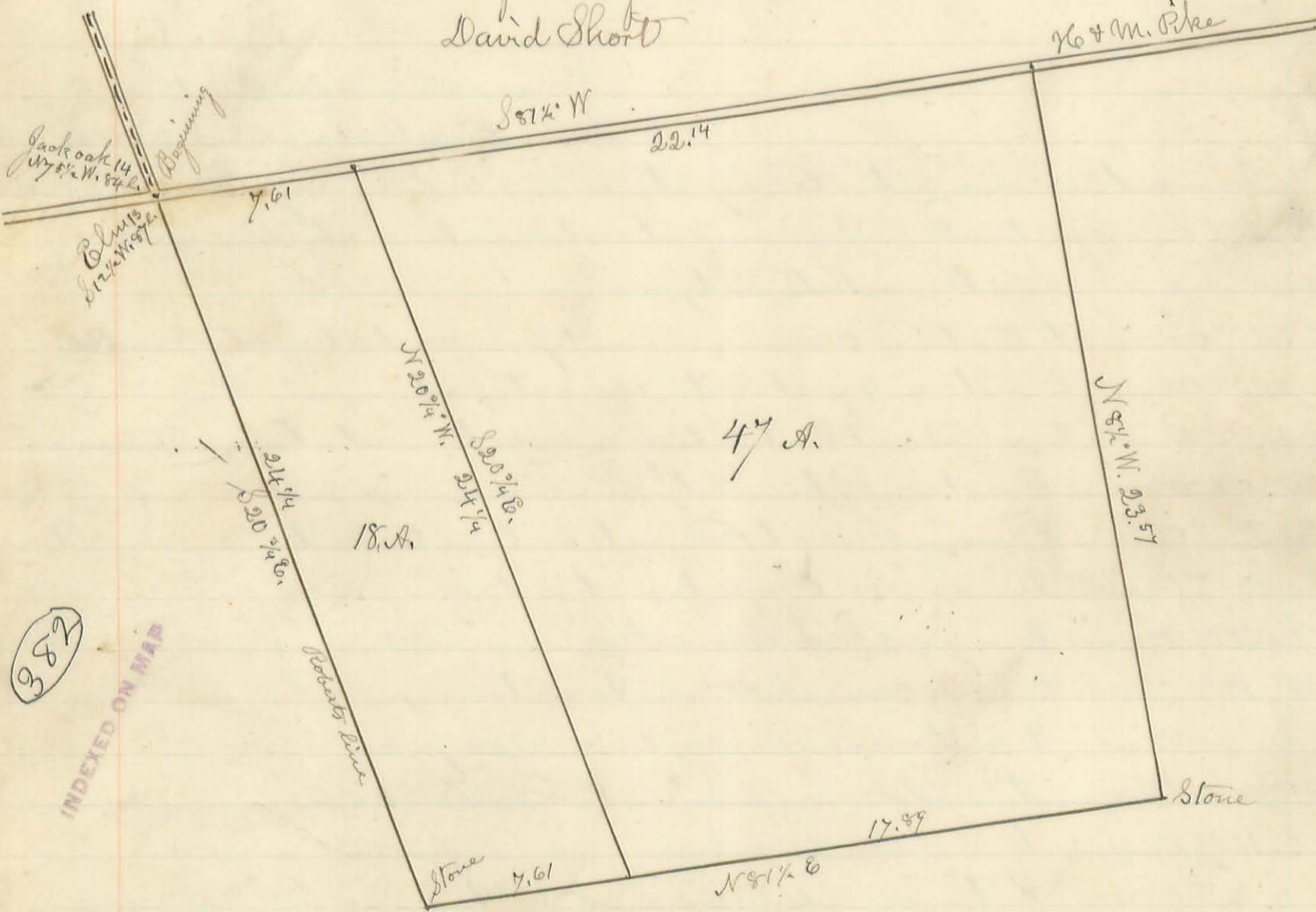


Surv. 3296

Jane and Monroe Prop.

Part of Survey No. 12168
David Short

No. & M. Pike



382

INDEXED ON MAP

Surveyed Nov. 9. A.D. 1885 for

David Short.

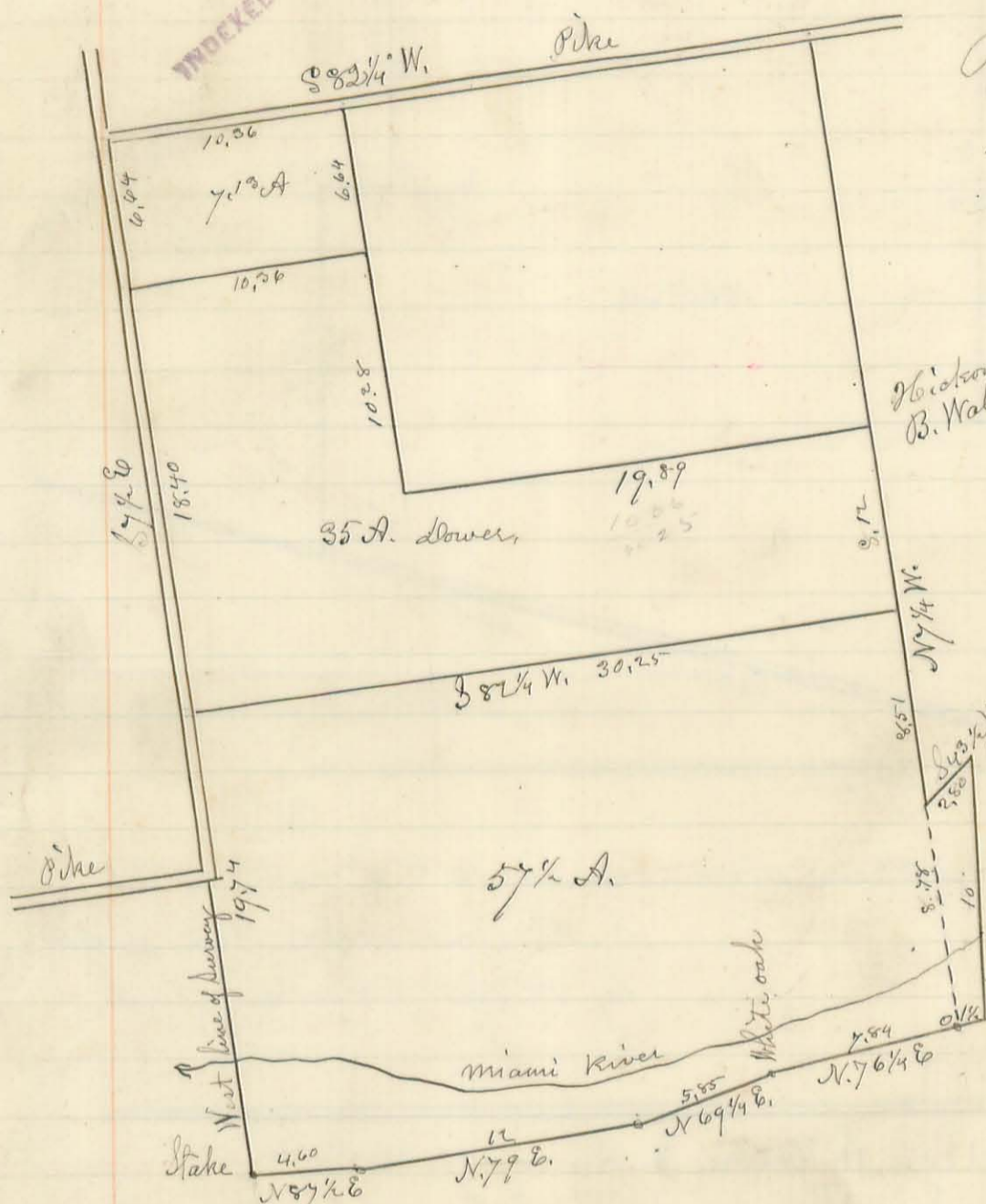
McArthur and Washington Prop. S. A. Buchanan Co. Surv.
by M. G. McManis Left.

Part of Survey No. 9948.

Bickham Brothers

953

INDEXED ON MAP



Richland Twp.

Scale 30 rods to 1 inch.

a. = Elm N.E. 17 & Buckeye NW. 15 l.

December 18th A.D. 1885
 Bellefontaine Ohio
 Surveyed as above for Bickham Brothers on
 the 27th day of November A.D. 1885.

L.A. Buchanan Co. Surv.
 by M.H. McCormick Deft.

954

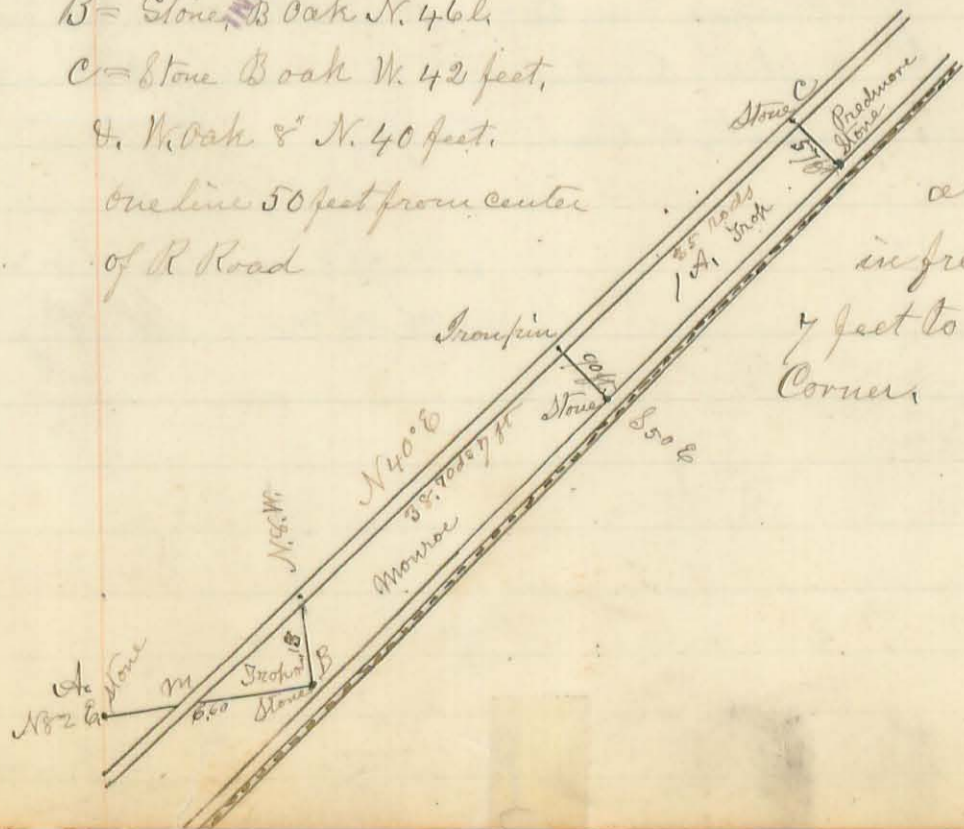
INDEXED ON MAP

Part of Survey No. 9955

Mrs. Trop Dec. 10. 1885.

Rushcreek Twp.

B = Stone 3 Oak N. 46 l.
 C = Stone 3 Oak W. 42 feet.
 D. Oak 8 N. 40 feet.
 one line 50 feet from center
 of R Road



Line from point A a stone as follows:

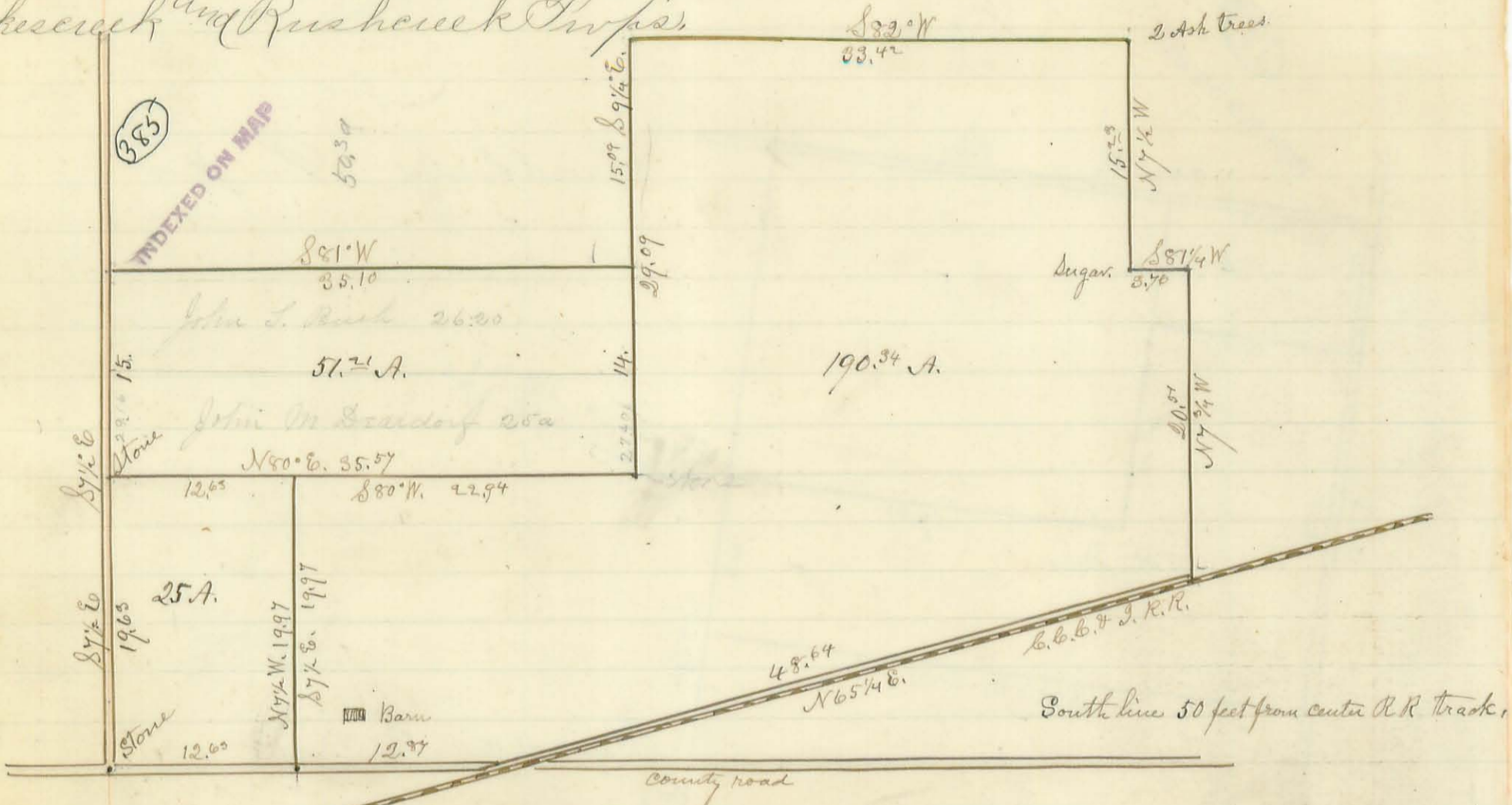
N 82 E. 6.00 chains to an iron pin where we planted
 a stone: thence N 8 W. 2¹² chains to center of pike
 in front of Mrs Mowres door: thence N 40 E. 38 rods &
 7 feet to Mrs. Trop's corner: same course 35 rods to Fredmore
 corner. Surveyed Dec 10. A.D. 1885

L.A. Buchanan Co. Surv.
 by M.H. McCormick Deft.

Part of Survey No. 9978

B. S. Allison

Bokeseeck and Rusheuck Tracts



Survey as shown above December 10th & 11th A.D. 1885

S. A. Buchanan Co. Surv. by M. H. McCormick Dept.

N.E. Corner Section 10 Town 3. Range 14 M.P.
Joseph Klammer

Surveyed Dec. 15th A.D. 1885. as a "Children's Home"

Explanation

- A - Gate post N.E. 46 feet
- " Gate post S.W. 33 "
- " Fence Post S.E. 40 "
- B = Fence Post S 24 ft. & Fence post N. 25 1/2 ft. the Corner in a line with the two posts, marked,
- C = Hickory 8 in. E. of N. 11 feet. No other tree near.
- D = Stake Eastward 18 ft. & Black Walnut 12" South of East 23 ft.

Harrison Prop.

S. A. Buchanan Co. Surv. by M. H. McCormick Dept.

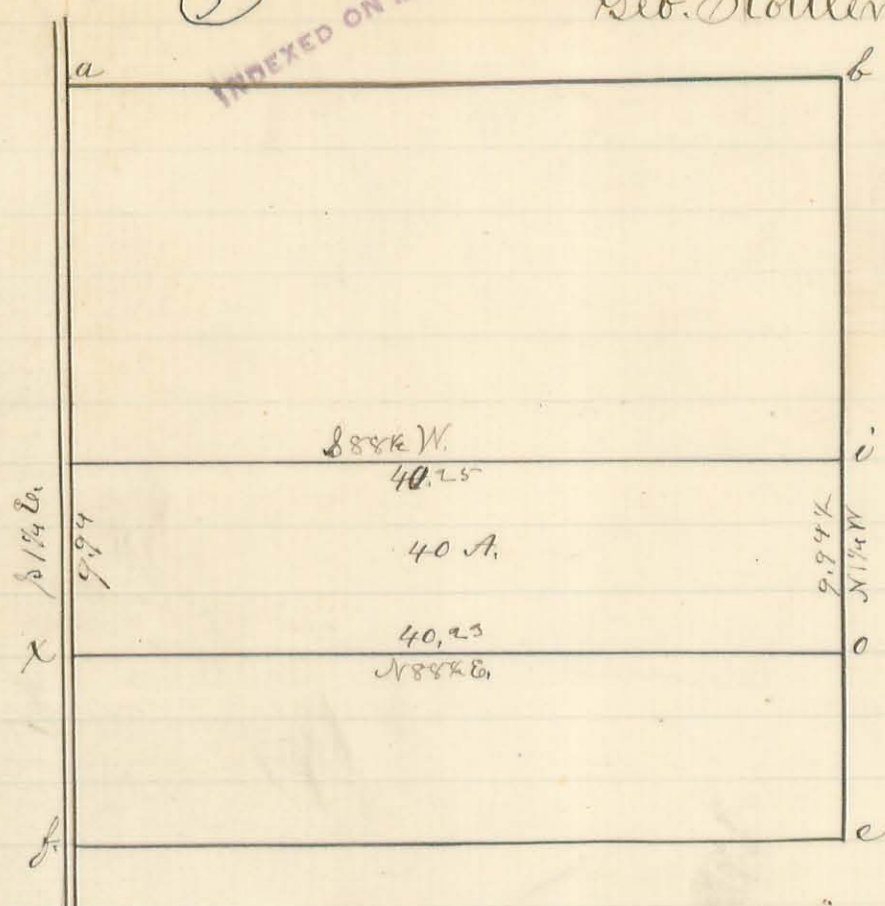
INDEXED ON MAP

N. Part S. 1/2 N.W. q. Sec 2, Town 7, Range 8 Stokes Sp.

357

INDEXED ON MAP

Geo. Stottmeyer



Surveyor's office Logan County
Bellefontaine O. Jan. 9th 1886

The annexed plat represents the North part of the South half of North West quarter of Section 2 Town 7 Range 8 Surveyed for George Stottmeyer of Stokes Township Logan County Ohio

Explanation

- a = Flat limestone N.W. Cor. Sec. 2 T 7 R 8.
- b = Stake in line of center of B.D. ditch Willow 18 S 29 1/4 E. 30 1/2 links & Willow 14" (2 from 1 post) N 19 1/4 E. 52 1/2 links, & Elm 12" N 87 1/4 W. 40 l.
- c = Red oak 10" N 82 1/2 W. 18 1/4 l. & Ash 24" S 29 1/4 W. 19 l.
- f = Stake 62 l. South of center of Culvert.
- i = Stake, a maple 12" N 58 E. 29 1/2 l. Ash 10" N. tree 8 1/2 W. 37 1/2 feet.
- o = Double Ash 10" N. 17 E.
- x = Oak E. 40 l.

Surveyed Decemba 24th A. D. 1885.

S. A. Buchanan Co. Surv.
by M. H. McCormick Deft.

The original of this page is blank or missing.

Part of Mil. Surv No 12272

Lines a. b. c. d. e & f were located and lines connecting same were established by the undersigned Surveyor March 16th & 17th 1886. Land owners John W. Morris, Milton Patrick & A.S. Blank were present, at time of planting corners, which said corners and lines connecting were duly accepted and acknowledged as the true and lawful boundaries between said several owners. Geo. A. Warden of Springfield authorized surveyor to establish such boundary line as he should find necessary of Warden land.

Field Notes

A. Stone, Red Elm 3 inches diam N 87 1/4 E 13 1/2 links, A to B N 79 3/4 E 13.25 chains
 B. Stone, Elm 18" N 83 3/4 W 16 links B to C N 19 1/4 E 28.04 ch
 C. Stone in cut road, and 4 bricks, Apple tree 16" S 39 1/4 W 45 1/2 links also Shel. Hickory 28"
 S 72 W 28 1/2 links. C to D S 79 1/2 W 7 1/2 ch.
 D. Stone and brick gate in center of road and in east line of "Snodgrass tract". Black Walnut
 10" S 84 1/2 E 140 3/4 links also Shel. Hick. 24" N 30 1/4 E 67 3/4 links
 D to E N 19 1/4 E 14.17 ch.
 A to F N 9 1/2 W 36.79 ch

Surv No 12272
Cherry's Land
John Lackey



Surv. 12272

Stokes Tp.

Richland Tp.

M. Patricks land is 76.43 acres, as per this survey. Contents of all other tracts shown on plat are taken from Auditors Dup.

Field Notes continued

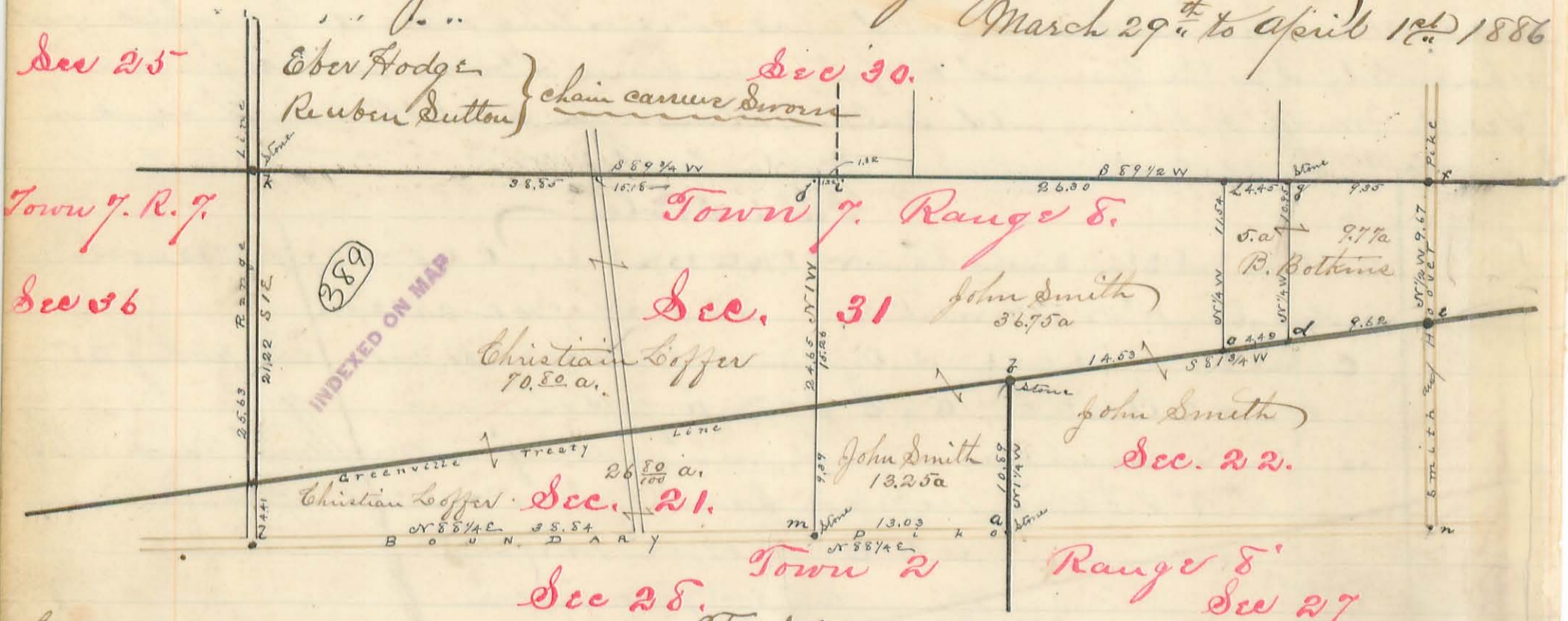
E. Stone north east corner to "Snodgrass tract" Elm 14" N 18 1/2 E (old mt) 7 links
 also Elm 12" N 80 3/4 E, live tree 17 1/4 links
 also Elm 15" S 48 3/4 W 13 links
 E to F S 80 W. 25.75 ch. pass Red Oak live tree 86 di at 21 1/2 chains
 F = Stake and stone in willow swamp. Swamp oak 8" (leaves south) N 77 1/2 E
 53 1/2 links also a willow 8" (leaves north west) S 8 1/2 E 6 links
 G = Orig south west corner of Surv in Lewisston Reservoir. This corner found and perpetuated in Feb. 1886. No water then on ground at corner. Original corner trees dead. Hickory down ash stump 12' high standing. Ash 20" S 9 1/2 E 20 links, Hickory N 89 1/2 W 20 links. at the corner I drove round Black Walnut stake.
 H = Stake in prairie corner to V. Piers Survey No 12276, S 7 1/2 W 15.46 ch from co. line at
 I = Bena Stone monument in Survey and county line
 J = " " " " county line at corner to Stokes & Richland Townships

Surveyed as shown above March 16th & 17th 1886
 By S. A. Buchanan Co. Surv. Co. C.

Richland and Stokes Map

Section 31. Town 7 Range 8 parts of
Sections 21 & 22 Town 2 Range 8.

Surveyed as shown below for Jacob Shearer
March 29th to April 1st 1886



Field Notes Book 3 W Page 167 to 193
See Road Record Vol Page 35

Field Notes

- a Stone at dot & fill on Boundary pike south east corner Sec. 22. S. 2. R. 8. cent. gravel on pike S 1/4 W 4 1/2 links. a to b N 1/4 W 10.89 chains
 - b Stone north west corner Sec. in G. Treaty line. Red Elm 14" N 86 3/4 E 24 links. b to c with Greenville Treaty line N 81 3/4 E 14.53 chains, c to d same 4.49 chains, d to e same 9.62 ch
 - c Stake in G. T. line. Birch 16" N 53 1/2 W 9 1/2 links & Black Walnut 14" S 72 1/2 W 3 1/2 links
 - d post, 2 links north of stone, stone out of place.
 - e Stake and Stone south east corner Sec 31 T. 7. R. 8. at west side Smith & Hoover pike
 - f Stake north east corner Sec 31. T. 7. R. 8. at west side S 1/4 pike. c to f N 1/2 W 9.67 ch
 - g Stone in Sec line, f to g with Sec line S 89 1/2 W 9.35. g to h same 4.45, h to i same 26.30 ch.
 - h stake in Sec line. Gray Ash 14" S 2 1/2 W 57 1/4 links & Elm 14" S 50 1/2 W 28 1/4 links
 - i Stake at gr Dec cor. Shel. Hick 7" N 87 3/4 E 76 links. Angle in Dec line at gr Dec cor 14
 - j Stake in Dec line. Quar Dec bears S 88 3/4 E 13.22 links. j to k S 87 3/4 W 35.85 chains
 - k Stone in center pub. road 18" below surface road. north west cor Sec 31. T. 7. R. 8.
 - l stake in north line Dec 28. T. 2. R. 8. center of gravel on Boundary pike N 10 W 7 1/2 links. k to l S 1 E 25.63 chains passing G. T. line at 21.22 chains
 - m Stone in south line Dec 21. T. 2. R. 8. in center pike. l to m. N 88 1/4 E 38.54 ch.
 - m to j N 1 W 24.65 chains pass treaty line at 9.39 chains, c to k N 1/4 W 11.07 chains
 - m to a. with Dec line N 88 1/4 E 13.03 chains, d to g N 1/4 W 10.95 chains
- Christian Loffer has 70.80 acres in Sec 31. T. 7. R. 8. & 26.80 a. in Sec 21 T. 2 R. 8.
John Smith has 13 1/4 acres in Sec 21 T. 2 R. 8. & 36 3/4 acres in Sec 31 T. 7 R. 8.
Benjamin Bothins has 5 acres in Sec 31 T. 7 R. 8.

Above lands of Loffer, Smith & Bothins purchased of Jacob Shearer.

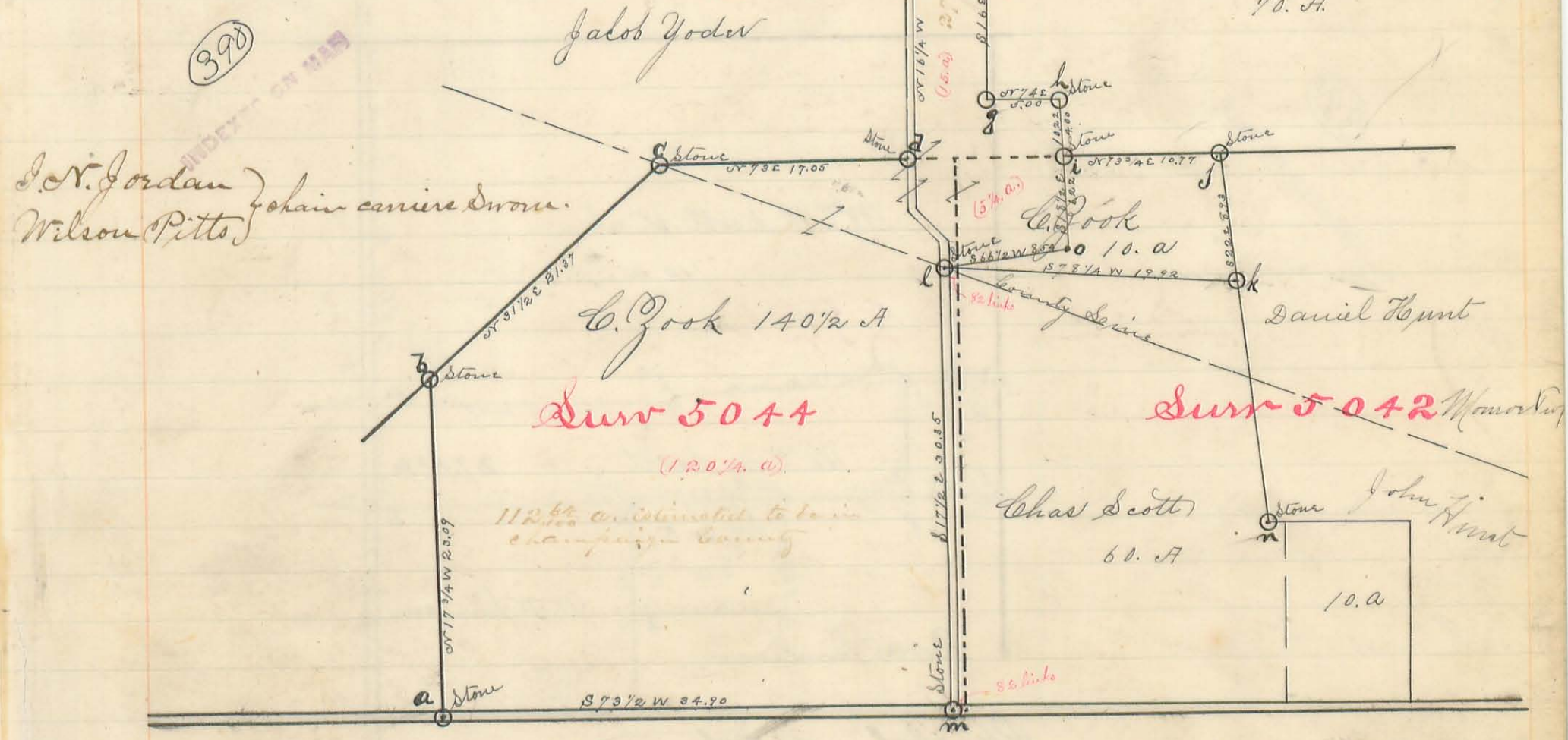
Surveyed as shown above
March 29th to April 1st 1886

By S. Buchanan
County Surv. L. C. O.

Bloomfield Prop.

Parts of Surveys Nos 5044, 5042 & 4492,

Surveyed for R.N. Jordan Atty at Law
and Chas Scott Executors for
estate Wm Scott, decd.



Corners

(Field Notes Book 97 Page 14 to 17)

- a. Stone in center public road. South west corner Durr 5044. a to f N 17 3/4 W 23.09 chains
- b " corner to Durr 5044 f to c N 31 1/2 E 21.37 "
- c " " " " " " Burr 0.36 S 33 07 W 49 links c to d N 73 E 17.05 "
- d " in Durr line at west side road. Black Walnut 10" S 34 1/4 E 61 3/4 links, d to e N 16 1/4 W 25.40 "
- e " in cut X road, W. Oak 30" S 9 3/4 E 75 links & Red Oak 14" S 48 1/4 W 75 links. e to f N 73 3/4 E 5.25 "
- f " cut road, north west corner Wm Cookston, W. Oak 30" S 6 E 17 1/2 links f to g S 16 E 21.33 "
- g stake, Black Walnut 24" N 1 E 67 1/3 links & Black Walnut 24" N 70 1/2 W 89 links g to h N 74 E 5.00 "
- h a stone, in S line Durr 4492 & N line Durr 5042. Red Oak 30" S 54 1/4 E 71 link also White Oak 30" N 71 3/4 E 120 links. h to i S 18 1/2 E 10.22 chains
- h stone, h to o S 18 1/2 E 10.22 chains
- o post near Sarsaparilla tree 16"
- l stone center pub. road. o to l S 66 1/2 W 8.07 chains, crossing Durr line at 7.72 chains
- m stone " " " and 82 links west of south east corner to Durr 5044. l to m S 17 1/2 E 30.35 chains with cut road, m to a S 73 1/2 W 34.90 chains
- j stone at Shil. Hickory 20" in Durr line formerly north east corner to Chas Scotts land.
- k stake in west line Saul. Hunts land. Walnut Black 6" S 12 1/2 E 11 links
- n stone corner Daniel Hunt and Chas Scott.

The lines joining corners a. b, c, d, e, f, g, h, i, o, l, m, a, contain 140 1/2 a. old Wm Scott farm -
" " " " i, j, k, l o, p contain 10 acres

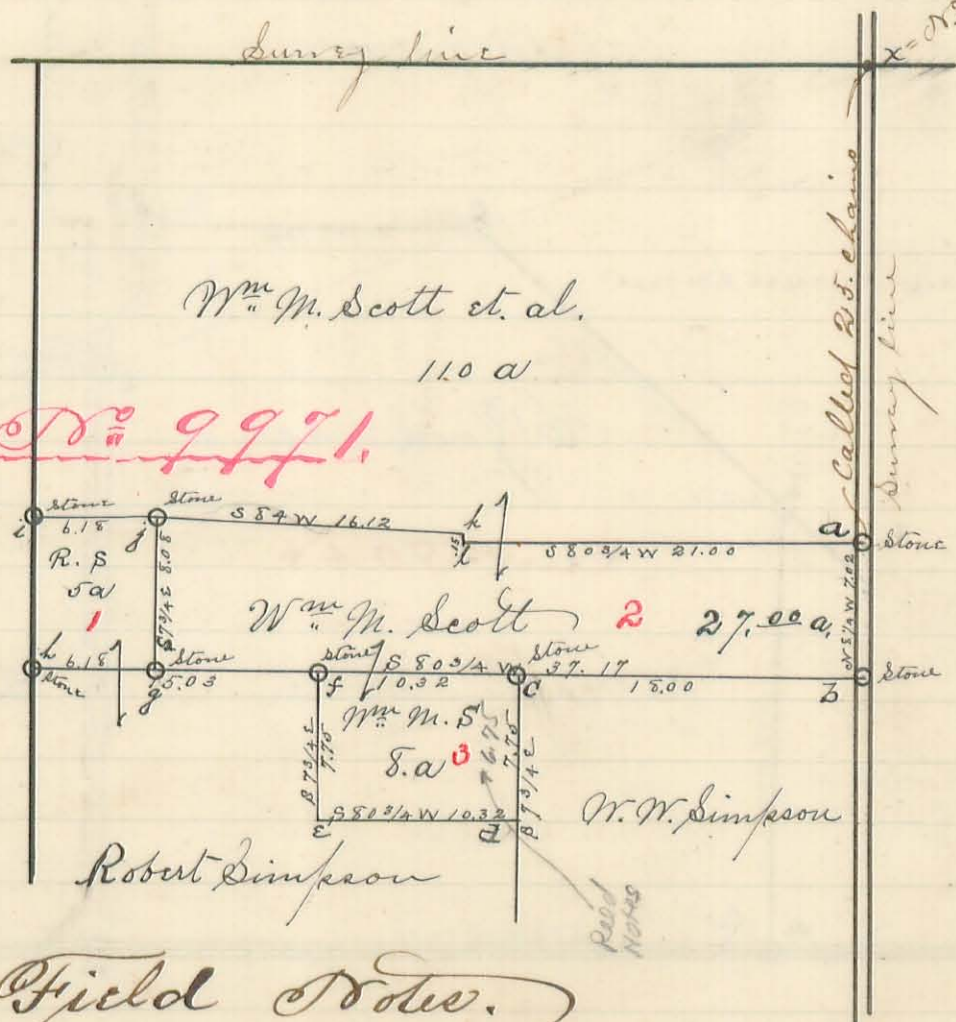
The 140 1/2 acre tract is divided by Durr & co. lines as follows. Durr 5044 has 120 1/4 acres. Durr 4492 has 15 acres. Durr 5042 has 5 1/4 acres. Champagne Co. has 112 6/10 a and Logan Co. has 27 5/8 a. The location of county line was not known positively but assumed on best evidence obtainable to pass through corners c and l and on this basis the calculation for division between the counties was made.

Surveyed as shown above April 5. / 6 1886

By J. B. Bannan
County Durr S. C. Ohio

Part of Mil Surv No 9971. Vol 277 1/2 a. Orig Plan
 Surveyed for Rebecca Hoover & William M. Scott.
 April 14th 1886.

391
 INDEXED ON MAP



Richland Prop.

Courses

Field Notes.

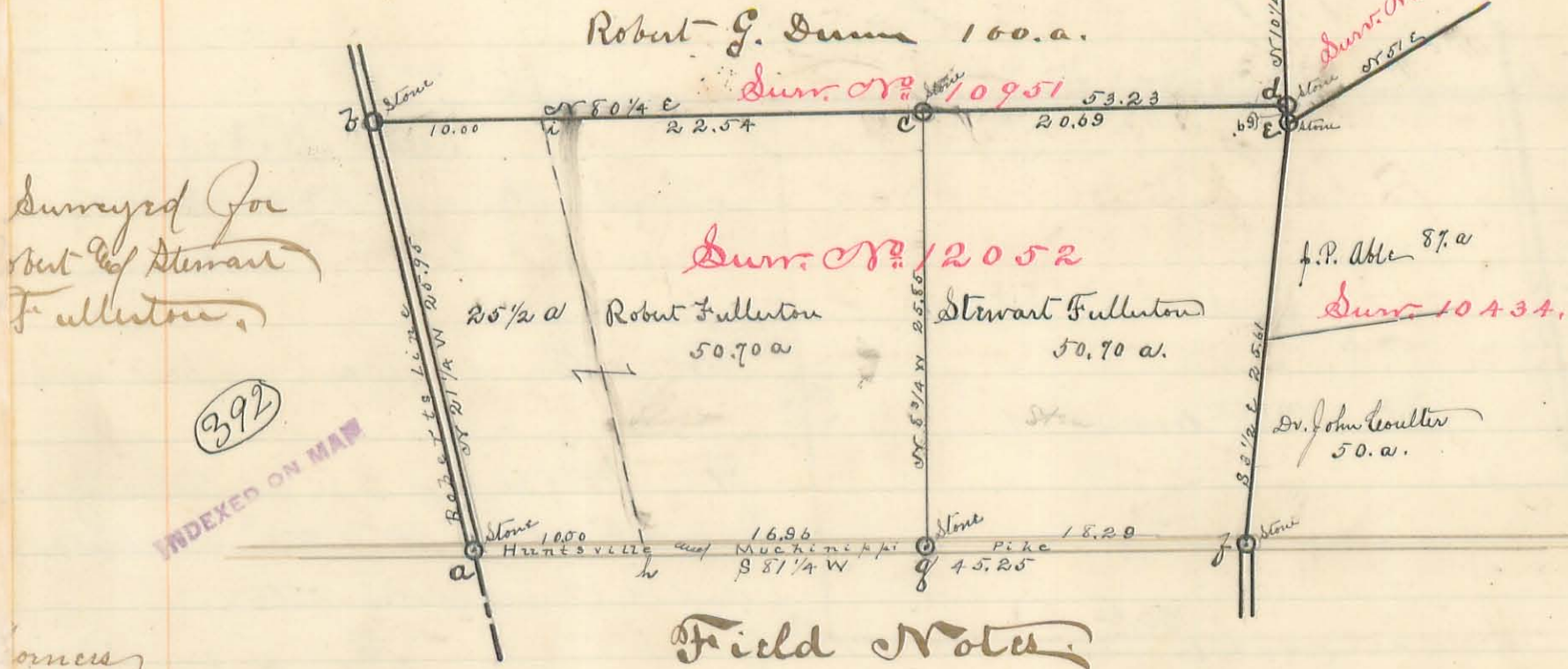
- a Stone in East line Survey corner to Scott & Hoover lands
- b " " " " " corner to Hoover & W. W. Simpsons heirs lands from which a Burr Oak 4 feet diam bears N 48 1/2 E 31 links & Black Walnut 2 feet S 35 1/4 E 12 1/2 l
- c Stone north west corner to lands of W W Simpson heirs
- d post in west line of " " " " " corner to Robert Simpson
- e post corner to Robert Simpson
- f stone " " " " " corner to Robert Simpson
- g " " " " " corner to Robert Simpson
- h post, the east end of old fence row. It is S 8 1/4 E 15 links from k.
- i " " " " " corner x is the north east corner of the Survey and supposed to be 25 chains northward from corner a
- j " " " " " corner to Robert Simpson

h, i, j and g
 k & l

Courses & distances in chains are as shown on plat.
 Course a, b, c & g, h, j & i were established on survey made by H. B. Moore Surv. about a year ago and accepted by adjoining land owners as true and lawful corners. He also planted stones at points intended for course d & e. But in this survey I discovered he had made an error of one chain in the line c to d same being 6.75 chains instead of 7.75 and a proportionate error in the corner e. These errors I corrected and placed the corner at d & e as shown above. course k & l are posts accepted by adjoining land owners as a compromise of errors in former survey. Tract No 1 is 8 acres sold by Rebecca Hoover to Robert Simpson. Tract No 2 is 27.00 acres sold by Rebecca Hoover to William M. Scott. Tract No 3 is 8 acres sold by Robert Simpson to Rebecca Hoover & by her to William M. Scott. At corner d & e I drove stakes. Land owners agreed to plant stones as soon as possible. D. S. Thompson } chain carriers. Sworn
 John W. Bridge }

Surveyed as shown above
 April 14th 1886
 By S. A. Buchanan
 Cos. Surv. Lo. Ex. Ohio

All of Virginia. Mil. Surv. No. 12052



Field Notes

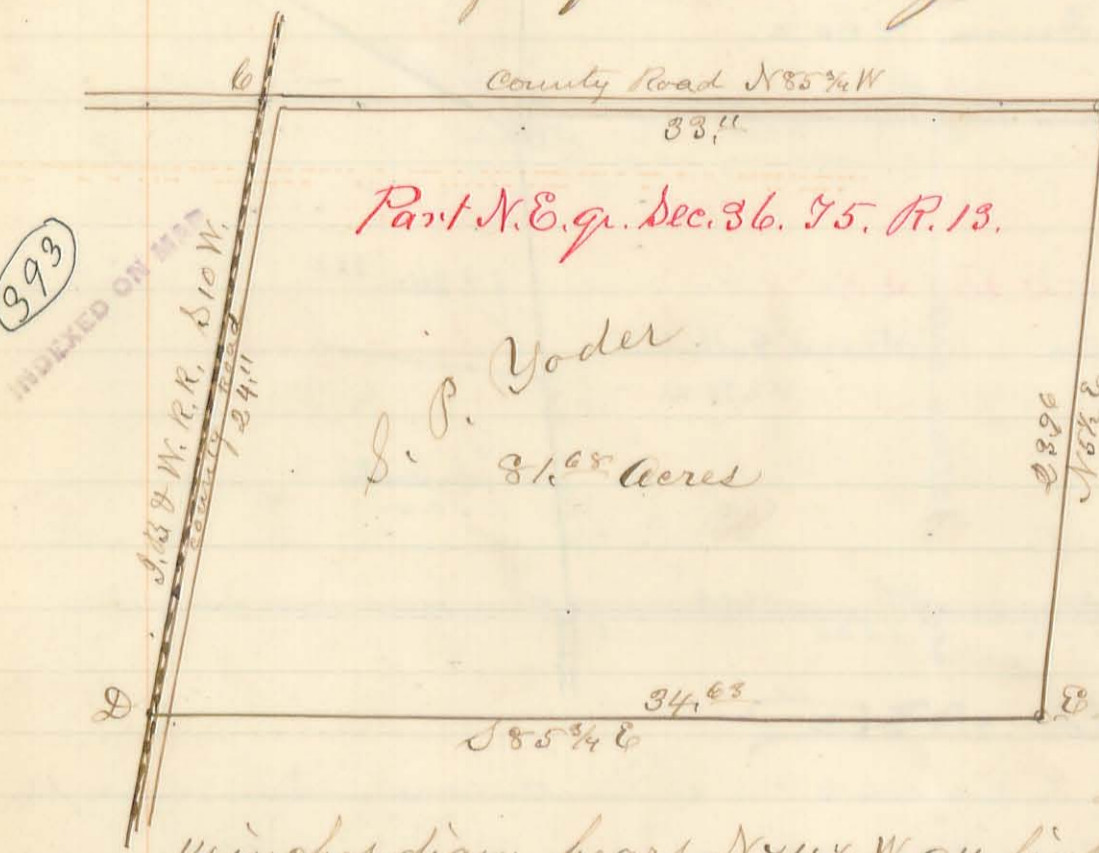
- a Stone, Boulder 20"x10"x8", in center of pike and Robt's line and southwest corner Dunn 12052 from which Red Oak 22" bears N 74 1/2 W 84 links and an Elm 22" bears S 13 1/4 W 87 links
- b Stone in Robt's line and N.W. corner Dunn. Stone is a boulder 21"x12"x8". Quar. Sec corner in Sec 7. T7. R9 bears N 21 1/2 W 5.27 chains, also W. Oak 36" N 45 3/4 E 70 1/2 links of Bur Oak 12" S 18 W 67 1/2 links of W. Oak 26" S 82 W 73 1/2 links
- c Stone, boulder, 21"x10"x8", in Dunn's line and corner to Robt Fullerton and Stewart Fullerton from which a W. Oak 30" old pump line tree bears N 80 1/4 E 246 links of Black walnut 9" N 71 1/4 W 8 links of White Elm 14" N 78 1/2 E 18 3/4 links and a Pin Oak 30" S 15 E 40 links
- d Stone, boulder, 24"x12"x12", South east corner to Dunn 10951 and corner to Dunn 12052 in line of Dunn 13715. From which a stone corner to Dunn 10715 and 10434 bears S 10 1/4 E 69 1/2 links and a Shel. Hickory 7" S 39 1/4 W 43 1/2 links and a Shel. Hick. 8" N 37 1/4 W 59 links and a Bur Oak 6" N 74 E 23 1/2 links
- e Stone cor. Duns. 13715 and 10434, Black wal. 10" bears S 29 E 29 links. See corner d. above.
- f Stone, boulder 20"x7"x8", in center of ^{Pike} corner to Duns. 12052 and 10434 from which a Shel. Hick. 12" bears N 8 E 101 links and a Red Oak 16" bears N 37 3/4 E 114 links
- g Stone, boulder 20"x8"x10, in center of pike corner to Robert Fullerton and Stewart Fullerton

h & i Posts corner to the old Fullerton tract.
 Courses and distances in chains are as shown on plat above,
 Charles Fear } chain carriers sworn
 James Fear }

Surveyed as shown above,
 April 22nd / 23, 1886
 By S. A. Buchanan
 Co. Surv. L. C. O.

Part N.E. q. Sec 36 Town 5 Range 13 M.R.
 Surveyed for S.P. Yoder Jan. 29th 1886.

393



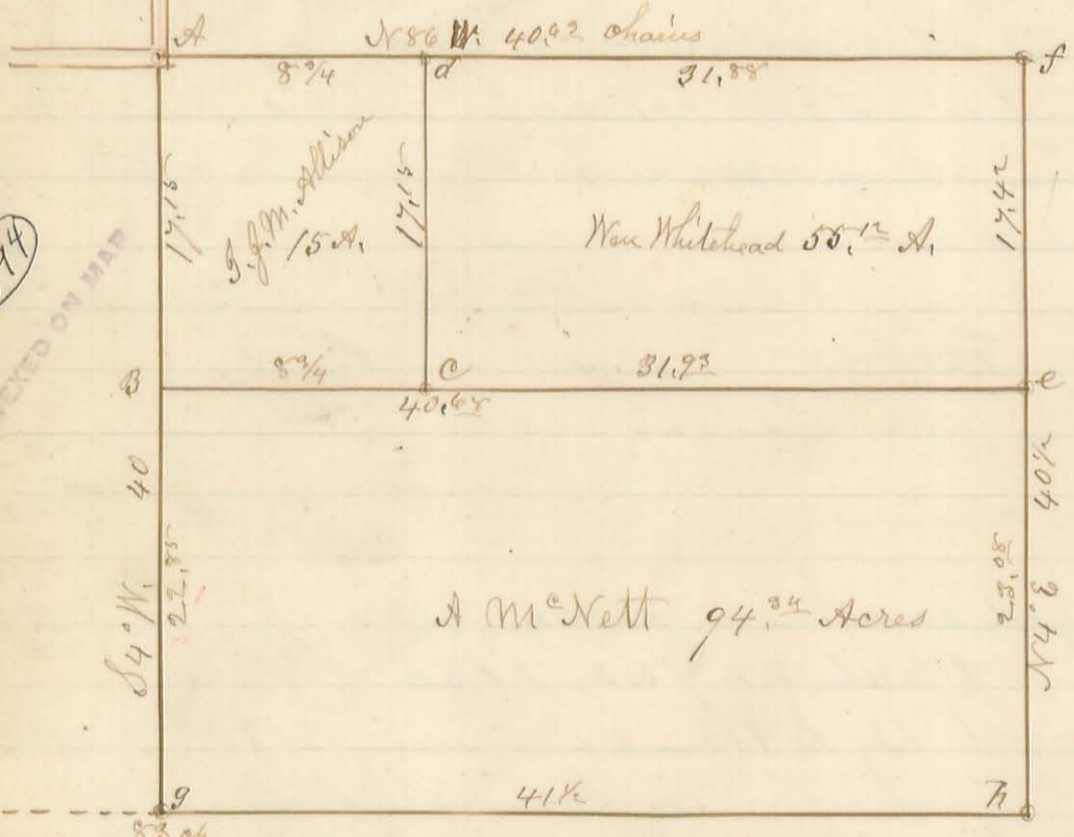
Field Notes

A = Stone at N.E. cor. Sec. 36 near S.N. Dille's Residence,
 B = Stone in road, no tree near
 C = West rail of RR track, a Black Walnut tree bears S.E. 118 links distant and is 12 inches diameter,
 D = West rail of RR track, a Hickory 14 inches diam, bears N 74 1/2 W. 94 links distant.
 E = Stone, A Red oak ^{30"} N. of N. 62 links, and a Wild Cherry 14 in. diam, West of South 45 links distant.
 S.A. Buchanan Co. Surv.
 by M.H. McCormick Dep.

Liberty Twp.

S.E. q. Sec. No. 1 Town 3, Range 14 M.R.

394



Field Notes

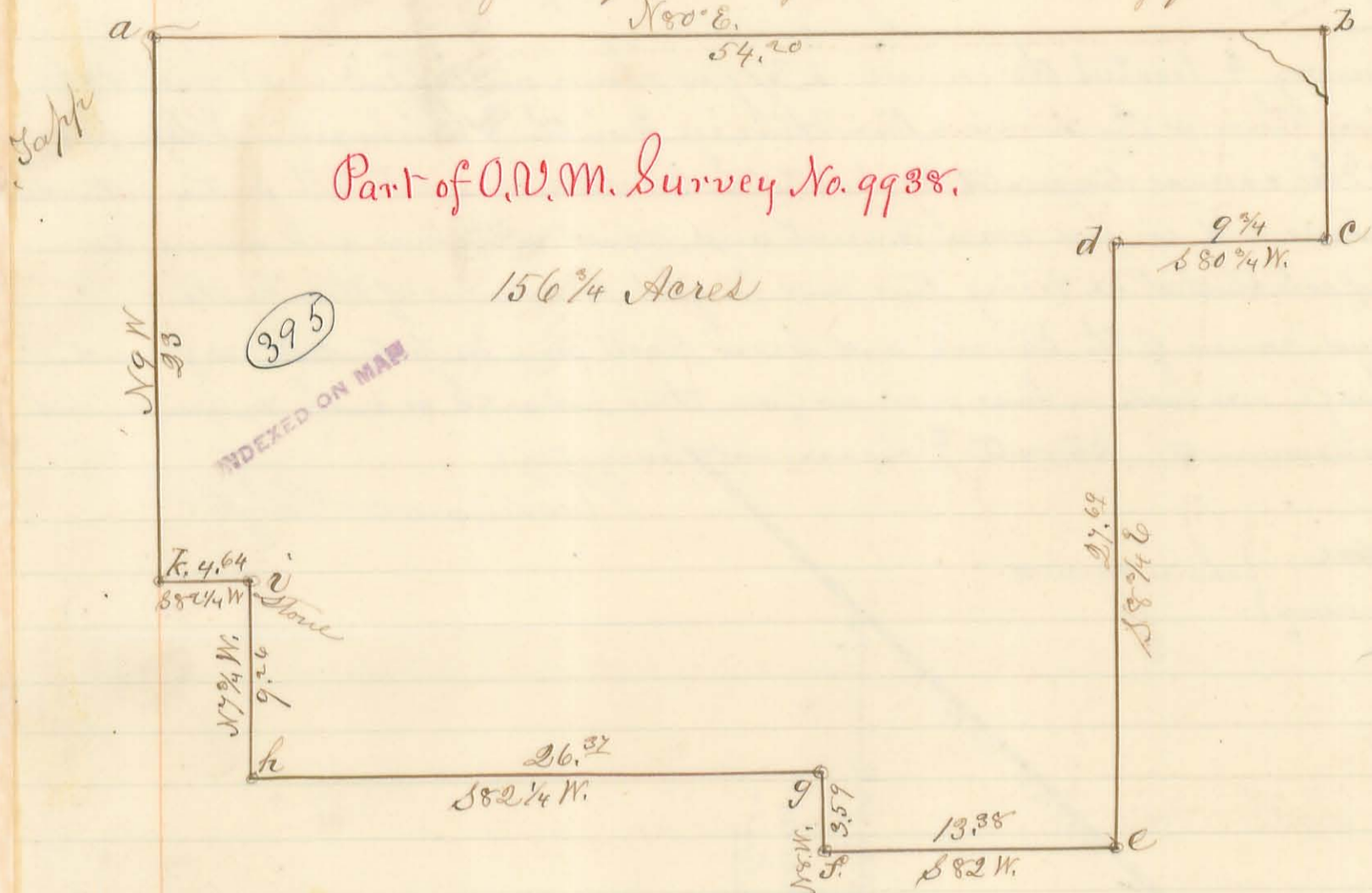
A = Stone, a White oak 30" S 88 3/4 E. 30 links
 B = Stone, a Black oak 20 in. S 6 W. 66 links
 C = Stone a stake, No tree near
 D = " " " a White oak 12 in. N 42 E. 19 L
 E = Stake driven in Prairie no tree near
 F = Stone planted, a White oak E of N. 18 & Hickory 8 in West of South 25 links,
 G = Middle one of 3 oaks N 50 W. 31 links Elm 12 in. S 6 1/2 W. 53 links
 H = Stone road, Witnessed originally by a White oak 16 in N 62 W. 18 L now cut down, stump still there.

Surveyed for W. Whitehead, as shown by the above plat
 April 12th A.D. 1886.

Liberty Twp.

S.A. Buchanan Co. Surv.
 by M.H. McCormick Dep.

Part of Survey No. 9938
 Surveyed for Fisher & Middle of Ridgeway May 6th A.D. 1886
 as shown by the following Plat. purchased from Carlisle A. Marmou.



Field Notes.

- As follows, - a. = Stone, a maple 8 in. S28 1/2 W. 40 links & Maple 10 in S. 20 1/2 E. 58 links distant.
 b. = Stone, an Ash 12 in. S28 1/4 W. 26 links
 c. = Stone, & White oak 20 in, on bank of Channel N. 45 1/4 E. 41 l.
 d. = Stake 2 feet North of an Elm 24 in.
 e. = Stone & Cottonwood 24 in. N. 7 1/2 W. 41 l.
 f. = Black Ash, Corner Tree in lane
 g. = White oak 14 in. S5° E. 46 l. & B. Walnut 6 in N65° E. 45 links.
 h. = Stone at North side of an Elm.
 i. = Sugar 14 S36 E. 38 links, & Lynn 12 in. N71 E. 22
 k. = Stone, an Ash 18 N30 1/2 E. 23 links distant.

Andrew Murdock } Ch. Carriers,
 John W. Libally }

S. A. Buchanan Co. Surv.
 by M. H. McCormick Dept.

Cokes Creek Puff

Part of Mil. Surv. No 14032

Surveyed for M. A. Smith & Thos. Livingston

In this survey I located the corners b. & j as shown on the plat and erected the line joining them as the division line between Smith & Livingston. I also perpetuated the corners designated by k. i & h. (Decker corner). All parties interested in said lines and corners were present and agreed to the lines and corners as located and established as being true and lawful boundaries of their lands.

The lines and corners of the Stewarts and Lease tracts were perpetuated as found, and no change was made in lines or corners from those indicated as such by fences and other monuments. Stewarts & Lease not present.

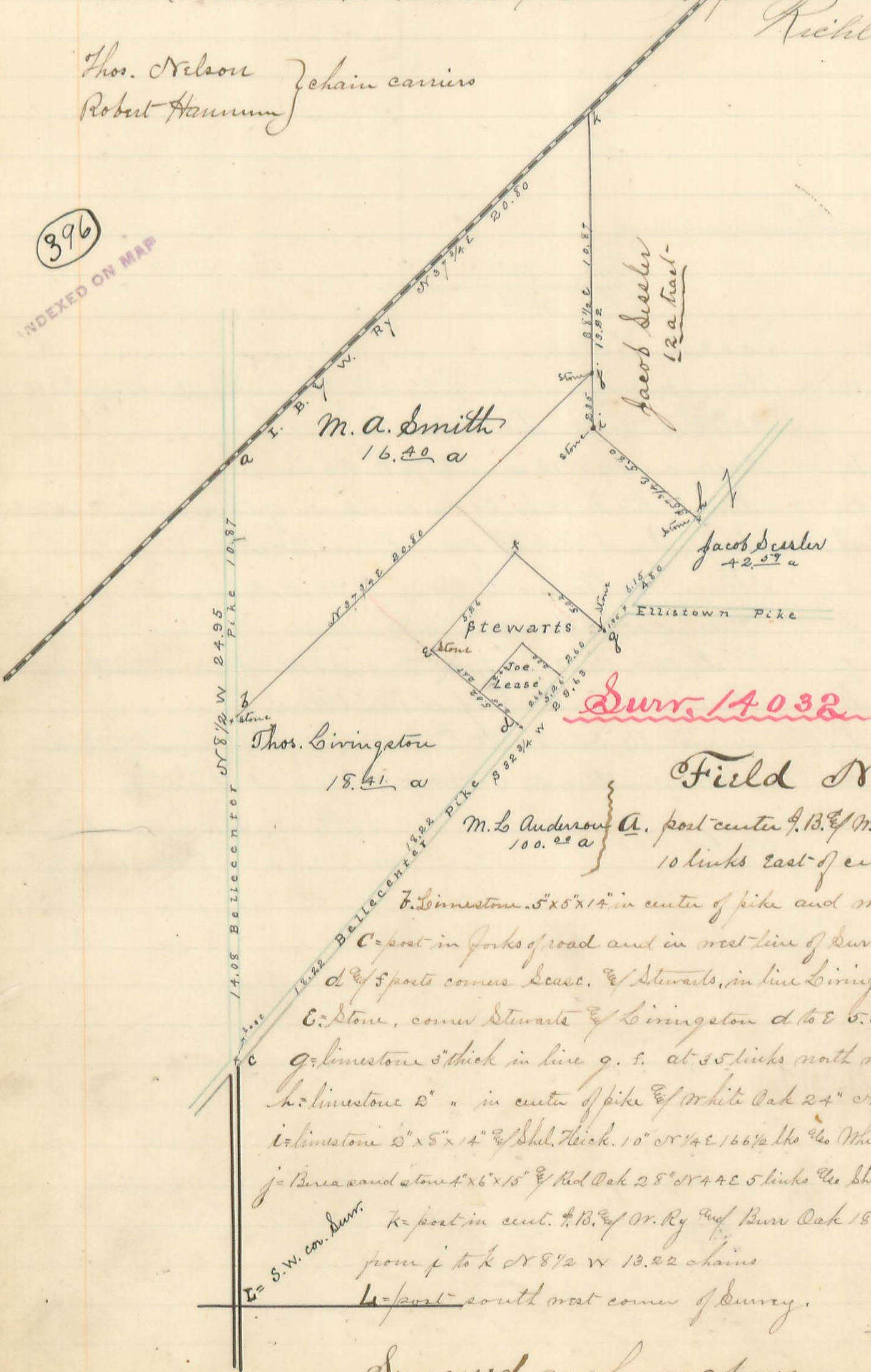
Richland Prop.

Thos. Nelson } chain carriers
Robert Hannum }

Field Notes Book 99 Page 23

396

INDEXED ON MAP



Field Notes.

a. post center of B. & W. Ry & W. line of Survey. at 10 links east of center of crossing.

b. limestone 5" x 5" x 14" in center of pike and west line of Survey. a to b 10.87 ch

c = post in forks of road and in west line of Survey. b to c 14.08 ch

d = 5 posts corner Lease, & Stewarts, in line Livingston c to d = 18.22 ch

e = Stone, corner Stewarts & Livingston d to e 5.02 ch. e to f 5.26 ch.

g = limestone 3" thick in line g. f. at 55 links north west from g, cut pike, f to g 5.02

h = limestone 2" " in center of pike & White Oak 24" or 2 1/4" 185 links g to h 6.15 ch

i = limestone 2" x 5" x 14" & Shel. Hick. 10" or 1 1/4" 166 1/2 lbs White Oak 14" 528 1/2 129 1/2 links, h to i

j = Berea sand stone 4" x 6" x 15" & Red Oak 28" or 4 1/4" 5 links the Shel. Hick (corner as above) 528 1/4 77, f to j

k = post in cent. of B. & W. Ry and Burn Oak 15" or 5 1/2" 56 links, j to k 18.87

from j to k or 8 1/2 W 13.22 chains

l = post south west corner of Survey.

Surveyed as shown above

May 24th 1886 by

D. B. ...

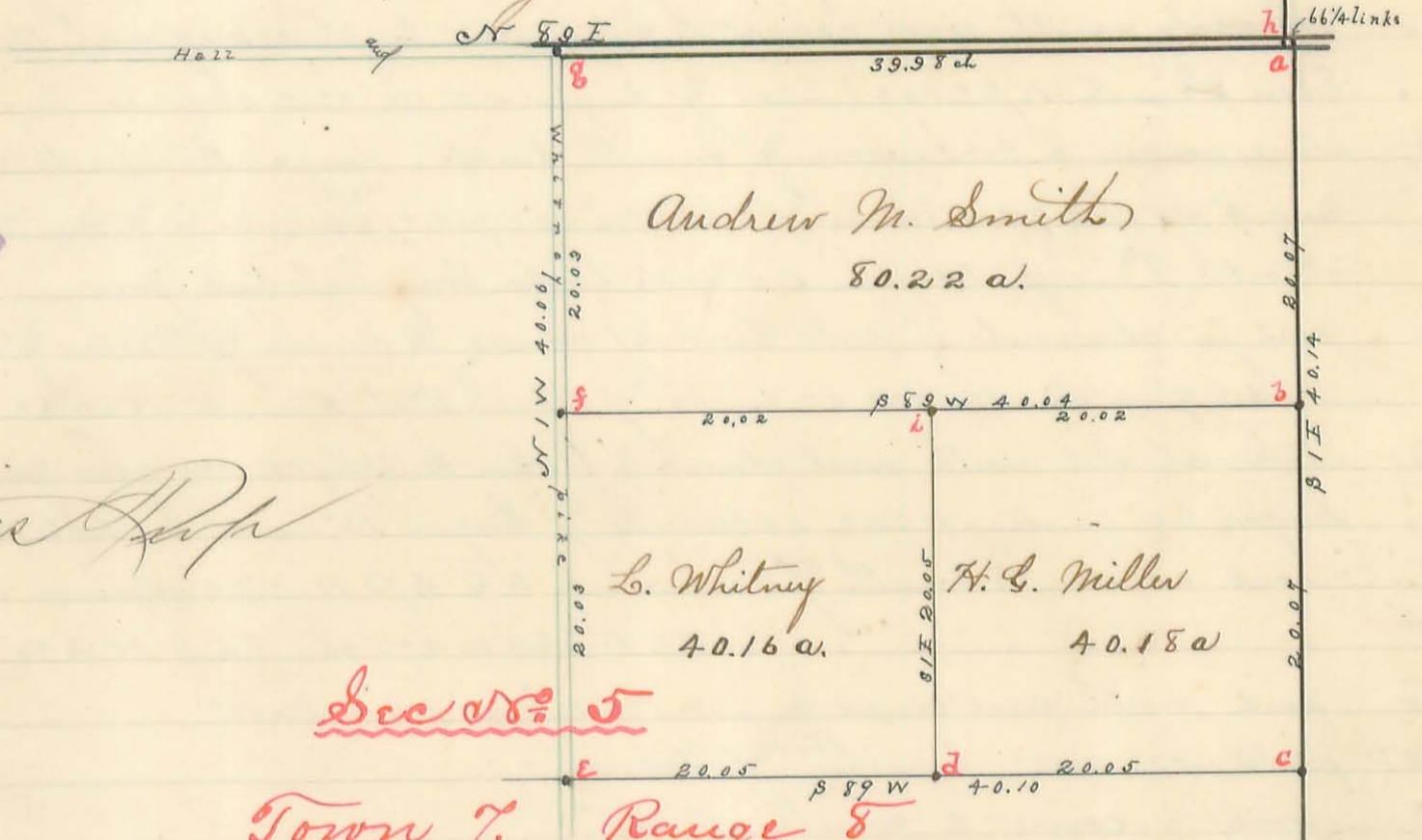
Plat of N.E. Quarter Sec No 5 Town 7 Range 8.

Surveyed for Andrew M. Smith & Maggie & Robinson.

John M. Laughlin } chain carriers Sworn.
Joseph Lehman } Moses Smith } Marker
Andrew M. Smith }
Henry G. Miller } " "

397
INDEXED ON MAP

Stokes Sup



Sec No 5
Town 7. Range 8

Field notes.

- a - North east corner of Section, at this corner found fresh 28" dead original bearing tree as located the corner by it and took following new trees. Black Wal. 16" N 47 1/4 W 104 1/4 links the Black Wal. 24" N 24 E 121 links. This corner is on about a 5 foot fill in road.
- f - Stake middle east line quarter. Red Oak 24" S 78 E 29 links
- c - South east corner of north east quad sec. here found remains of old orig witness trees Elm 18" and Black ash 14". by which I located corner and dug down and found remains of old corner stake from 12" to 18" below ground surface. took new trees as follows Black ash 9" N 1 1/2 W 18 links also Burr Oak 24" N 88 1/2 E 75 1/2 links
- d - Stake middle S. line of qr. W. Elm 12" N 50 W 37 links the Elm 5" N 3 E 44 links
- e - post in center Hall of Whitney pike and S.W. corner quar. sec.
- f - " " " " " " " " in center west line quar. sec.
- g - post in center of pike south of west. and north west corner to quar sec from which a Red Oak 16" bears N 8 3/4 E 28 1/2 links
- h - Stake corner to Sec's 32 & 33 T. 6. R. 8. and S 89 W 66 1/4 links from N.E. corner Sec 5 T. 7. R. 8.
- i - Stake center S. line N 1/2 N.E. qr. sec. Shel Hick (not marked) 10" S 8 1/4 W 65 1/2 links

Surveyed as shown above

August 31st 1886

S. A. Buchanan
Surr L. C. O.

Description of corners shown on plat on opposite page, as the same were located and established in Surr. for N. B. Smith made Oct 18th to 29th 1886.

Corners

Description

- A Stone in south line of Surr. 5089 parent corner to Elliott Dickinson
 " formerly south west corner to Samuel Duplex original 124 acre tract.
 " Elm 34 in di. N 88° 10' 4" E 104 links E Sugar 22" N 78 1/2° E 32 links. Original trees gone
- B Stone corner to Dickinson & Smith tracts. Sugar 2 inches di. S 62 1/4° W 7 links
 " Sug. 4" N 1 1/2° E 79 1/2 links E Blk. Wal. 10" S 70 1/2° E 232 1/4 links center of gravel on
 " North Greenfield pike S 5° W 46 links. Original tree gone
- C post in channel of Mill Creek E corner to Smith & Fisher E 3.87 ch. south of cor D.
 " Willow 9" in. di. N 18° W 52 links E Black. Wal. 5" in. di. N 62 1/4° E 69 1/2 links
- D Stake at old north west corner to John B. Wilgus 100 acre tract.
 " Sugar 22" in. di. N 24° E 53 3/4 links E Sugar 14" in. di. S 85 1/4° E 52 lks. Original trees gone
- E post corner to Smith & Fisher. E to C S 73° W 4.20 chains
- F " " " " " F to E S 63° W 4.75 ch. F to D N 86 3/4° W 8.00 ch
- G post north east corner to Jno B. Wilgus 100. a tract
- H & I & P posts, corners Smith & Fisher
- J post corner to Smith's tract
- K post Original south west corner to Jno B. Wilgus 100 acre tract
- L Stone Original south east corner to Samuel Duplex & south west corner Bushong
 " 300 acre tract in south line of surry. Original trees gone
- M Stone Original northeast corner to Daniel Duplex 124 a tract, no tree called.
- N corner to Smith & Fisher in old Bushong line
- Q post corner to Dickinson & Smith
- R Stake in Surr. line corner to Dickinson & Smith
 " Blue Ash 15" in. di. N 73 3/4° W 79 1/2 links E Pigeon Oak 14" in. di. N 10 1/4° E 48 1/4 lks.
 I planted a stone at the corner marked "B" and described above being the northwest corner of Elliott Dickinson's land and south west corner of N. B. Smith's land, in presence of N. B. Smith, Elliott Dickinson, Elmer Elliott, David H. Hariman, S. F. Fisher, William Fisher, U. S. Mann, Ira Lygum and Renford Armstrong. I did not plant any other stone on this survey all other stones being found planted as above described. I caused all stakes mentioned to be driven as above mentioned. In planting stone at corner to Smith and Dickinson and in making all corners as shown I was governed by copies of former field notes, descriptions of said lines & corners from Record and the Depositions relating thereto as shown pages 175 to 178 this book.

Plot of part of Surv. No 5089.
Surveyed for N. B. Smith Oct 18th to 29th 1886.

398

INDEXED ON MAP

Perry and Jefferson Prop.

William Fisher

S. G. Fisher

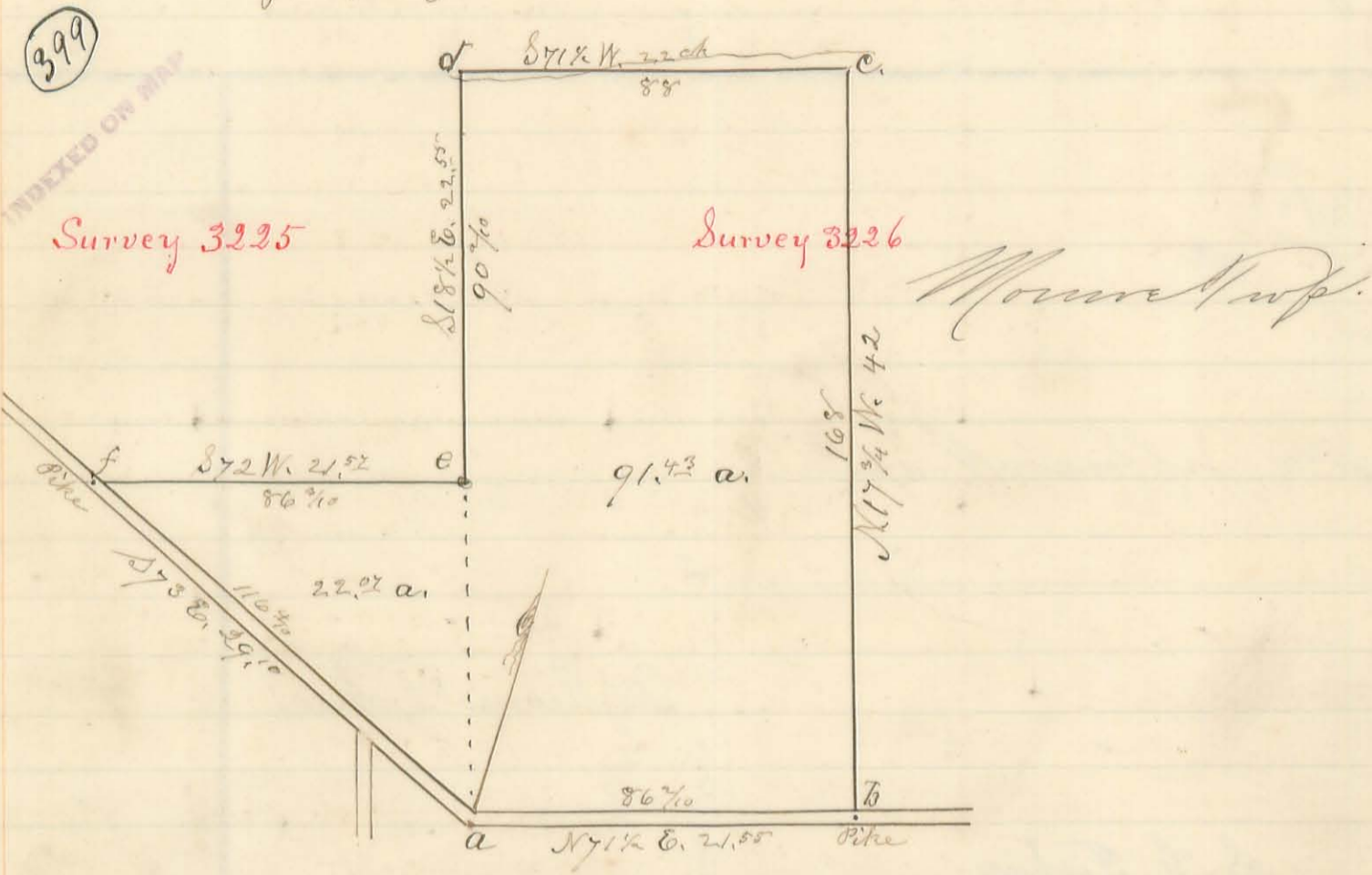


N. B. Smith axman
Elliott Dickinson marker

Norman S. Garvin }
Esa Gorym } chain carriers. sworn
Renford Armstrong }

Surveyed as herein before shown Oct 18th to 29th 1886
By S. A. Buchanan
Co. Surv. L. Co. Ohio

Plat of parts of Surveys No. 3225 & of No. 3226
 Surveyed for Jonathan Parker October 20th A. D. 1886.



Field Notes

- a = S.W. Corner of Surv. 3226.
- b = Large White Walnut gone Took New bearing trees as follows.
 Elm 15" N 7 1/2 W. 104 1/2 links & Sugar 15" N 7 1/2 E. 91 links.
- c = Yellow Willow 24" N 17 W. 75 links, South of branch.
- d = Black Walnut 15" S 18 1/2 E. 160 links, Stake N. side branch.
- e = Large Stone & B. Walnut 8" S 35 W. 20 links.
- f = Iron bolt driven in center of pike & Beech 20" S 8 1/2 W. 110 1/2 links.

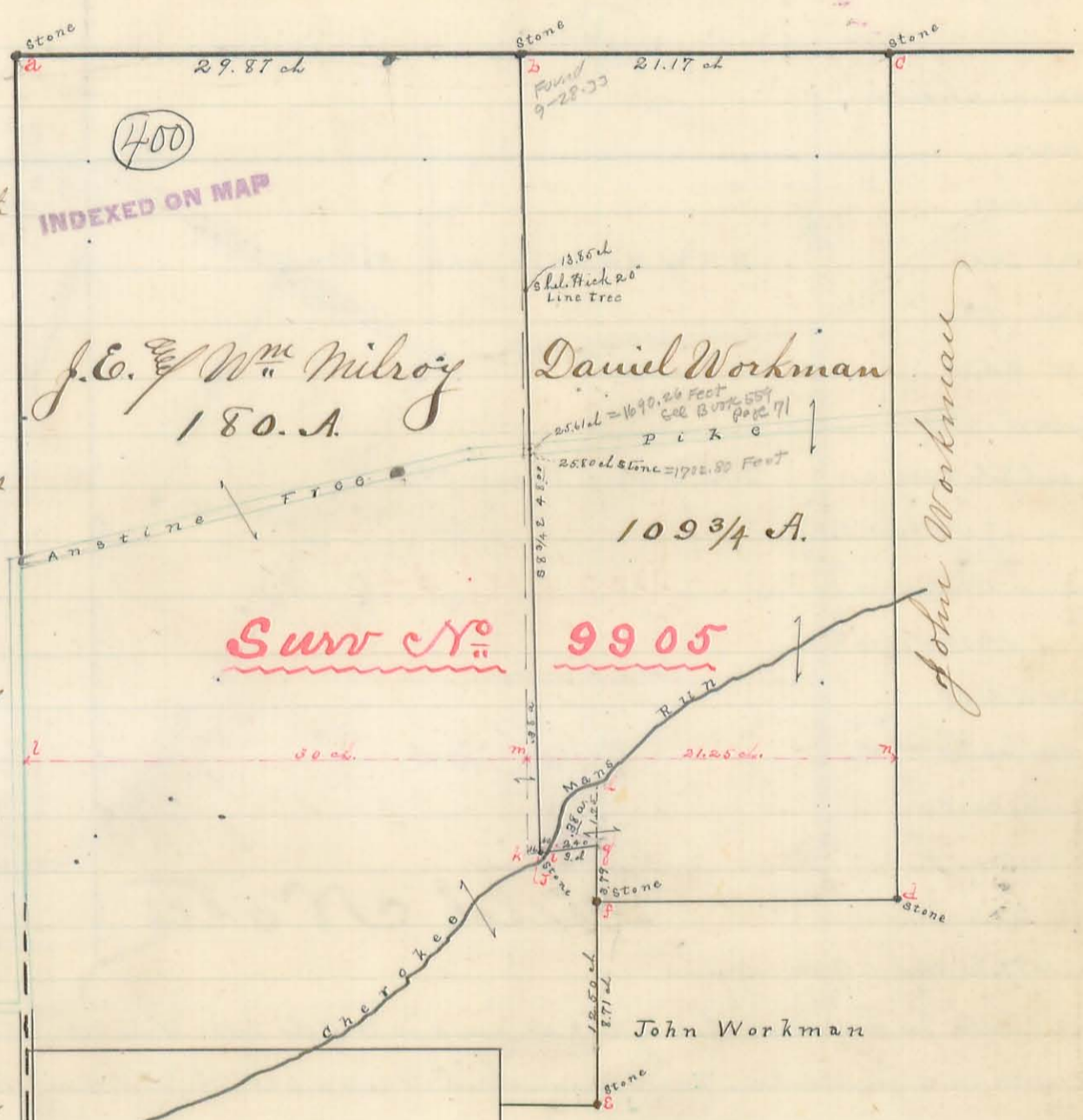
Surveyed as above by
 S. A. Buchanan Co. Surveyor
 M. H. McCormick Deputy Co. Surveyor

Part of Mil. Surv. No. 9905.

Surveyed for Daniel Workman and Jas E & William Milroy.
In this survey I located and established the corners b, f, g and e and all interested owners of land in Surv. 9905 were present and agreed to said corners and lines joining them as being hereafter the true and lawful boundaries of their respective lands.

J. E. Travis } chain carriers, sworn. James E. Milroy marker
Lemuel Bayles } Daniel Workman "

The line b to k, S 8 1/2 E 48.00 ch
is or one found to be the line dividing
Milroy & Workman lands. from the north
line of Surv. 9905 to point k, and the
line k to i and the channel of creek
on i to h and the line h, g, & con-
tinue their boundary lines to point f,
in order to square the lands as nearly as
practicable Jas E & W^m Milroy convey
Daniel Workman 38/100 of an acre
bounded by the channel of the creek
on i to h and by the lines i to g & g
to h, and Daniel Workman con-
veys to said Milroy 38/100 of an
acre bounded by lines b, k, f, b
which runs to a point at b and is
6 links wide at k f.



M^r Arthur Prop.

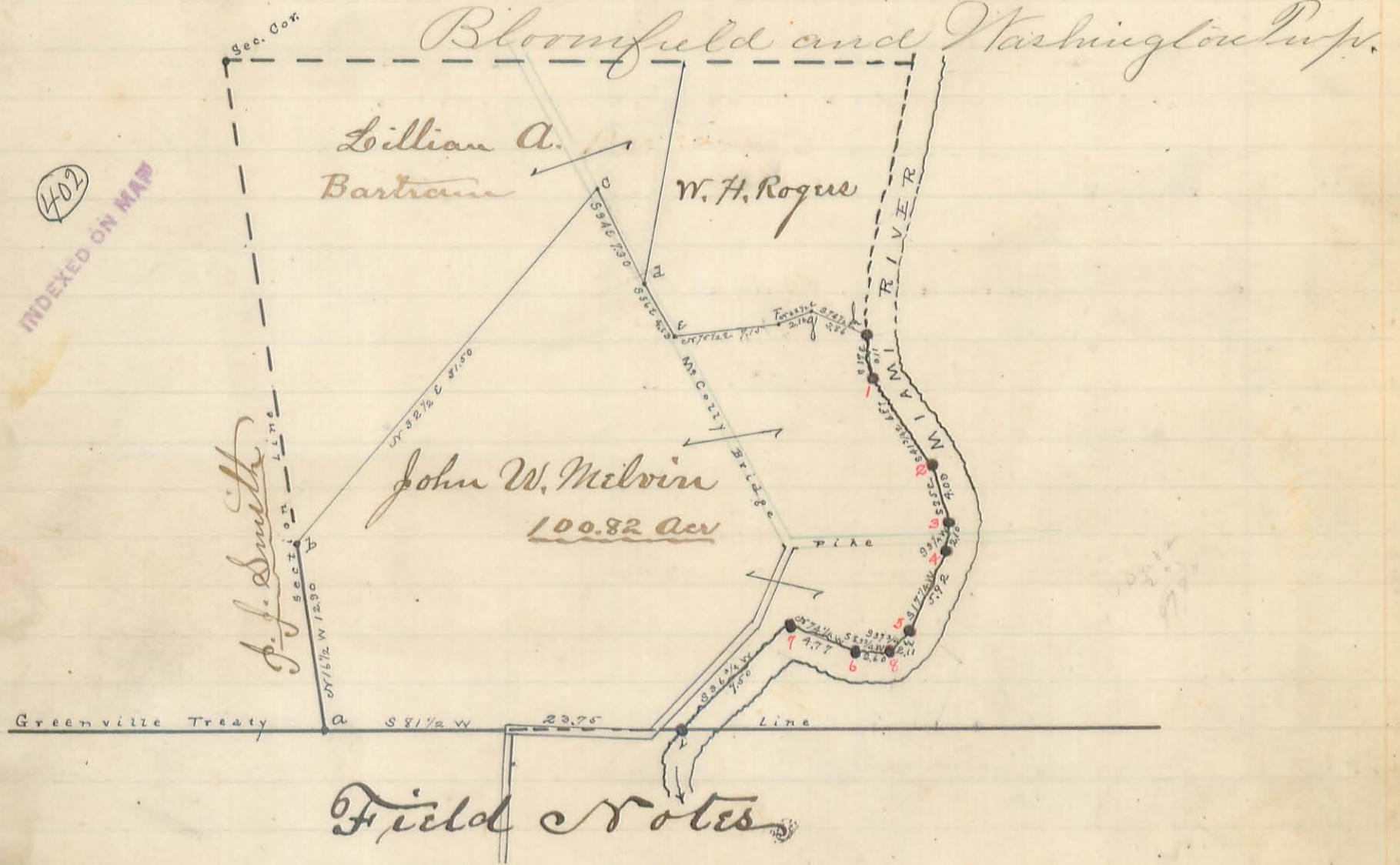
Field Notes.

- a = Stone north west corner of Surv 9905 Hickory (old corner tree) 18" N 17 3/4 W 14 1/2 links, Sug. 30" (old cor. tree down) S 25 1/2 E 14 1/2 links & Sug. 9" S 88 1/2 E 60 1/2 links
- Stone planted by me in N. line Surv. as corner to Milroy & Workman, Red Oak 24" N 78 E 2 1/2 links & Sug. 10" S 51 1/2 E 4 1/4 links
- Stone in N. line Surv. cor Daniel & John Workman White Oak 24" S 16 1/4 W 17 links & Red Oak 28" S 71 3/4 E 4 1/2 links
- Stone at east end of hedge fence corner Daniel & John Workman
- Stone planted by me corner Milroy & John Workman Black Walnut 8" N 8 1/2 E 5 3/4 links & Black Walnut 20" N 73 3/4 E 11 1/2 links
- " " " Daniel & John Workman and in east line Milroy, Ash 15" S 60 E 4 1/2 links
- take ^{south} bank of ditch from which stone f bears S 8 3/4 E 379 links & stone f bears S 74 3/4 W 300 links
- post in channel of creek formerly corner to Milroy & Workman, is same as h.
- line stone 30" x 12" x 3" planted by me and hereafter to be the corner between Milroy & Workman. Black Walnut 20" on north bank of creek S 53 1/4 E 64 links & W. Elm 22" on south bank of creek S 77 1/4 E 12 1/2 links & Double Red Oak 24" S 62 1/4 W 23 3/4 links
- post formerly corner to Milroy & Workman, a to b 29.87 ch; b to c - 21.17 ch.
- c to d S 88 3/4 E 48.00 chains; d to e N 88 3/4 W 8.71 chains; e to f N 88 3/4 W 12.50 ch; f to g S 74 3/4 W 2.40 ch; g to h S 73 3/4 W 3.00 ch; h to i 16 links
- Line l. m. n. was measured for the purpose of locating point m. in old Milroy & Workman line

Surveyed as shown above on November 18/2, 1886
by S. A. Buchanan Co. Surv. L. C. O.

Part of Nancy Stewart Section Town 7 Range 8
Surveyed for E. J. Howrntine Agt. of Alice Bartram.

A. J. Smith } chain carriers. sworn
James Melvin }
John S Wren } markers
John W. Melvin }



Field Notes

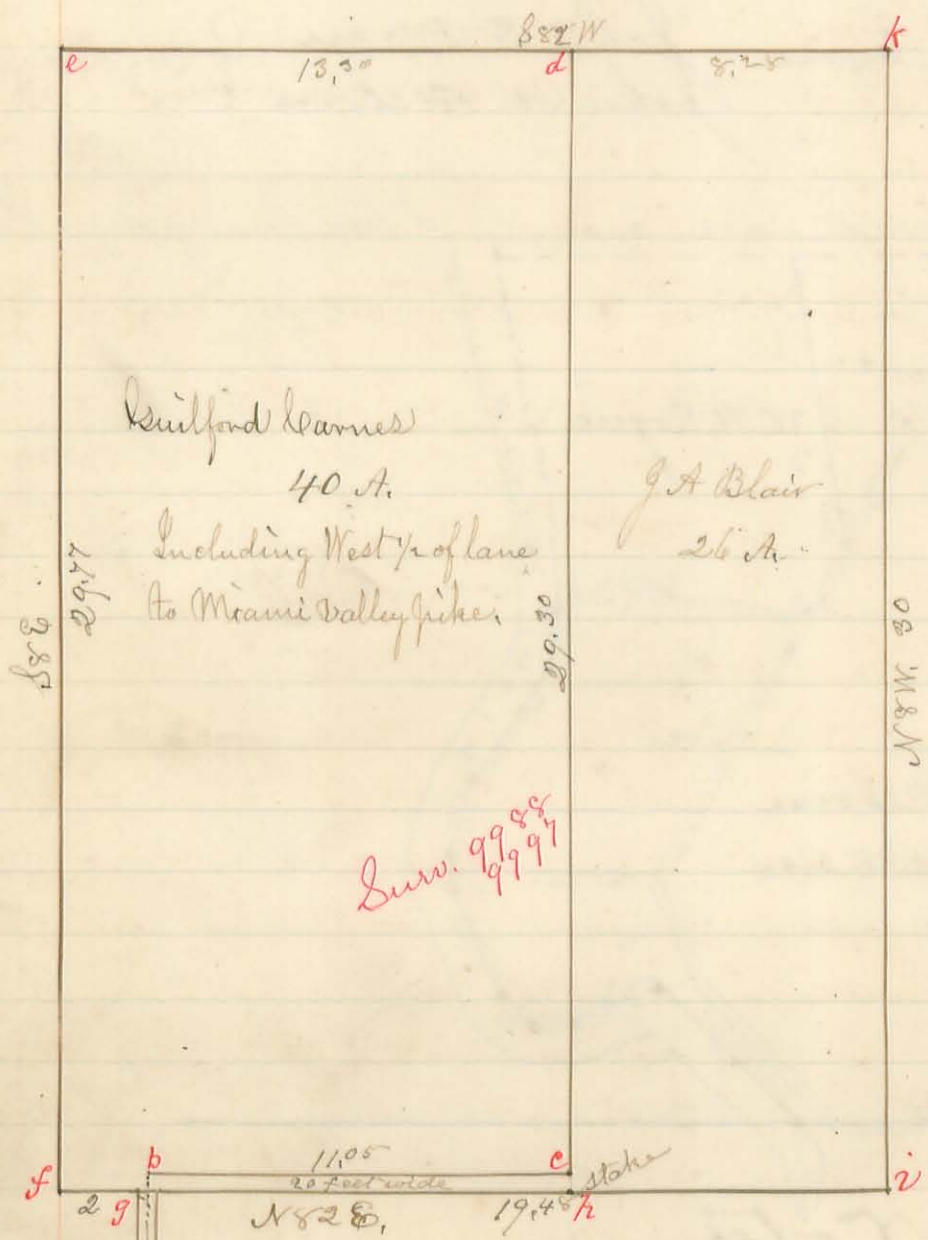
- a- Stone Boulder 18"x 10"x 7", south west corner Nancy Stewart Sec. W. Elm 25" N 1 1/4 W 13 1/2 links of W. Oak 20" N 72 3/4 E
 - " 83 links of Red. Oak 5" S 74 1/2 W 42 1/2 links. Old Bearing tree gone.
 - b- Lime Stone 18"x 12"x 5" Beech (old. B. T.) 16" N 6 E 14 lks. W. Oak stump (decayed, old B. T.) S 44 1/2 E 21 lks. W. Ash
 - " 22" N 27 1/2 W 69 lks. of Red. Elm 3" S 54 1/4 E 26 lks.
 - c- Lime Stone 17"x 10"x 7", Ash 22" (old B. T.) N 84 E 43 lks. of cent. gravel on pike S 54 W 29 lks.
 - d- post center Mr. Colly Bridge pike
 - e- Stone 12"x 6"x 7" cent. " " of Blk. Walnut 12" N 45 3/4 E 65 1/2 links of Blk Walnut 5" S 18 1/2 W 115 links
 - f- Double W. Oak (each stem 4") corner tree
 - g- Stone 14"x 8"x 9", in swamp, on top of old cov. stone, Red Oak 15" S 62 W 76 1/2 links of W. Oak 15" N 52 3/4 W 58 links
 - h- Lime Stone 14"x 4"x 6", on River Bank, W. Ash (old B. T.) N 36 E 29 l. of W. Oak 24" N 17 1/2 W 44 l. of Red Oak 5" S 56 W 25
 - i- Stake on River Bank in Greenville Treaty line. Planted stone (lime stone) 18"x 12"x 6" S 81 1/2 W 43 links from said stake and took following Bearing Trees from said stone W. Oak 18" S 43 3/4 W 37 l. of Shel. Hick. 4" N 86 1/4 W 8 1/2 links of Buck 30" S 13 1/4 E 21 1/2 links of Shulbank Hickory (line tree) 6" S 81 W 31 links
- From h to i the west bank of river was meandered on the ice as follows. h to 1 S 17 E 3.11 - 1 to 2 S 41 3/4 E 6.87 - 2 to 3 S 25 E 4.09 - 3 to 4 S 37 1/4 W 2.10 pass center of pike under bridge at 1.20 = 4 to 5 S 17 1/4 W 5.72 = 5 to 6 S 37 3/4 W 2.11 = 6 to 7 S 53 3/4 W 2.60 = 7 to 8 N 74 1/2 W 4.77 = 8 to 9 S 36 3/4 W 9.50. The remaining courses of distances were as follows
- a to b with west line of Sec N 16 1/2 W 12.90 = b to c N 32 1/2 E 31.50 = c to d S 34 E 7.30 = d to e S 36 E 4.13 = e to f N 75 1/2 E 7.15 = f to g N 62 1/2 E 2.16 = g to h S 74 1/2 E 3.86 = h to a S 81 1/2 W with Greenville T. line 23.75

For calculation of contents see Volume No. 1. Page 10.

Surveyed as shown above Dec. 31st 1886
By S. A. Buchanan Co. Surv. L. C. O.

(403)

Part of Military Survey No. 9988 + 9988 + 9997
Surveyed for Thomas Koil January 6th 1887



Richland Twp.

Sulford Barnes

40 A.

Including West 1/2 of lane
to Miami valley pike

J.A. Blair

26 A.

Surv. 9988,
9997

Surv. 9988

Lane 2 rods wide 29.05

Broken line 29.00 chains

- a = S.E. corner of McNeal's land
- b = Stone 20' N. Sur. line
- c = Stump.
- d = Stone, No tree near
- e = Stone, Beech 14 N 84 1/2 E. 7 links.
- f = Stone, Beech 14 S 23 1/2 E. 28 links.
- g = Stone.
- h = Stone.
- i = Stone, Ash N 45 W. 6 l.
- k = Stone, Large Red oak S 66 1/2 W. 29 1/2 l. old wt.

Miami Valley Pike

Surveyed as above January 6th 1887 by
W. H. McCormick, Dep.
for S. T. Buchanan County Survey

Record of Testimony taken in Surry for N. B. Smith
In Va. Mil Sur No 50 89 - Perry Township.

1886
Oct 18th

John E. Southard. (Sworn)

Que. Do you know where the north west corner of the old John B. Wilgus tract of 100 acres is

Ans. This stone I believe to be the old corner

Que. Was there any timber called for at this corner, if so what.

Ans. I think the timber called for was 2 sugars and believe this sugar stump to be the remains of one of the trees. Supplied by my father in law put in the stone.

Que. Was there a survey made at time of sale to William Fisher of the joggs

Ans. Do not remember.

1886

John S. Wilgus (Sworn)

Oct 18th (At north west corner Wilgus tract)

I recognize sugar stump as remains of one of the old corner trees.

Oct 29th Que. Can you locate the north west corner of old saw mill.

Ans. Am not positive but to best of my judgement it is about that sill at the stake set by J B Wilgus

Que. How long have you known this dam

Ans. Since 1835. am 65 years old.

Que. can you tell the changes made in this dam since 1840

Ans. Both the tumbles (waterwheels) have been made at north end of dam since 1840.

Que. can you locate the original bank of the creek at or near the north end of dam
Ans. The bank ran parallel to dam from the north end nearly to the saw mill. say within 2 or 3 rods of the mill. this bank was the bank of the creek before the dam was built and the dam was built on the bank of the creek and on the east side of the channel of creek.

Que. Can you locate the north end of the dam as constructed by Gill

Ans. The north end of dam as made by Gill was here. (I link south of line No 2 and 108 links northward from line No 1) the fill was intended to be on a level to meet this bank

Que. Can you locate the old John B. Wilgus line at the dam.

Ans. Not exactly. this line was ~~intended~~ originally made to run straight through from the east line of Surry to east line of Harriman. and a line run parallel to the north line of N. B. Smiths 151 a. tract (formerly John Bushong) starting from Smiths north west corner would be the Wilgus line, let it run where it will. Do not know when it crosses the dam.

Que. When was this line from the east line of the Surry to Harrimans originated

Ans. By Mr. Arthur when he floeked out the Surry

Que. Was there a fence west from the north end of dam

Ans. Yes and this was called the north line of Wilgus