

- North in road on line bet secs 32+33.
 2047 Centre of $\frac{1}{4}$ sec line fence
 Geo. B. Hill. who was present at a previous survey says: The corner was opposite the centre of this fence.
- 3068 Full 19 links west of stone corner to secs 28.29. 32. 33. in centre of Stewart & Shroyer pike at J. where a forked cherry 8 in diam bears $S 52\frac{1}{2}^{\circ} W$ 60 $\frac{1}{2}$ links distant and an Elm 24 in diam, bears $N 30\frac{3}{4}^{\circ} W$ 178 $\frac{1}{2}$ links distant. Correct bearing of line $N. 1\frac{1}{4}^{\circ} W$.
- 2019 West on line in pile bet Secs. 29. 32 $S. 88\frac{3}{4}^{\circ} W$. Stone in centre of pile on county line at N^o 10.
- 2536 Supposed location of old county line.
 3558 Centre of line fence on the south Six Pines. Lafevre.
- 4038 Corner in pile at 70. Ret'd to cor of Secs 28. 29. 32+33. at J.
- 4006 North in road on line bet Secs 28+29. South east corner of Graryard -
 8015 Strike $39\frac{1}{2}$ east east of corner stone at cor of Secs 20. 21. 28+29 at I in centre of Boundary pike. Bearing of line $N 2^{\circ} W$
- 646 West on line bet Secs 20+29 $S. 87\frac{3}{4}^{\circ} W$. West end of fractional sec. 20 in pile on Greenville Treaty line.
- 179 West in pile on Greenville Treaty line bet Sec. 29. Tp. 2. R. 8. E. & Sec 36 Tp. 7. R. 7. E. + Sec 36. Tp. 7. S. R. 7. E. Treaty line bears $S 80\frac{1}{2}^{\circ} W$. Corner stone in pile at east. ang. of Co. line. + at South west cor of Frac. east half of sec 36 at 8.
- 383 West ang. in Co. line in pile on treaty line bet Secs 29+36 at N^o 9
 Feb. 5th 1884.
 Traveled to corner of Secs 31+36 at intersection of Greenville Treaty line with range line bet Ranges 7+8 at H.
- 2112 North on Range line in road bet bet Secs 31+36. Full 1 link west of cor. to sec 20. 30. 31+36 at G. Bearing of line $N. 1\frac{1}{2}^{\circ} W$.

Continued north on road on Range line
bet Secs 20 & 30

- 40²⁵ Struck 3 1/2 links east of 1/4 cor stone
- 42⁶⁰ Centre of Brandy wine creek
- 60³⁸ Struck 12 links east of 40 acre corner stone
- 80⁵⁷ Struck 8 links east of Stone corner to Secs
19.24.25. & 30. at F. Bearing of line N. 10° 25' W.

Continued north on road on range line bet
secs 24 & 19-

- 20¹⁶ 40 acre corner-
- 40²³ Centre of trout & Smith pile running east & west.
- 80⁵⁰ Strike 7 links east of corner Sec 13.18.19. & 24. at E.
Witness an ash 24 in. diam. North 5 links
distant Bearing of line North 11° 25' W.

Continued north in road on line bet Secs 13 & 18

- 20⁰⁵ Centre of road running west. &
- x Strike corner stone in Buckwood & Boughman
pile & in south end of Frank & Pierce pile
bearing corner to Secs 7.12.13. & 18. at D. Line bears
N 1 1/4° W.

Continued north in pile on range line bet
Secs 7 & 12

- 11³⁷ Gordon Boughmans south line
- 40²⁰ 1/4 Sec line -
- 80⁴⁰ Fell 12 links west of stone in centre of pile
at cor to Secs 16.7. & 12. at C. Line bears N 1 1/4° W

Continued north in pile on range line bet
Secs 1 & 6

- 20⁰⁷ Centre of 40 Acre line fence.
- 40¹³ Fell 10 links west of corner
- 60¹⁹ Centre of 40 acre line fence
- 80²⁶ Fell 11 links west of corner to Secs 1.6.31 & 36 T_p 6.7
& range 7 & 8 at B
Bearing of line north 1 1/2° W.

Continued north on pile on range line
bet Secs 31 & 36. N 1 1/2° W

- 20¹² Centre of 40 acre line fence
- 40¹⁹ Centre of 1/4 sec line fence.
- 80⁰⁰ Struck 7 links west of cor at A.
Street on line bet Secs 25 & 36 T_p 6 B
R.7.E. S. 88 3/4° W.

- 14⁵⁰ Old es. line & dock east cor of Auglaye Co
- 15¹⁶ Line fence bet Dav Shoffstall, & Joe Bayne

3572

Set temporary $\frac{1}{4}$ sec post for Co line
Original witness trees at this corner
were a Pigeon Oak 12 in diam. bears N. 69° W.
15 links distant & a Swamp Ash 8 in diam. bears
S 35° W 26 links distant Both trees distant

3566

Struck 26 links south of 40 acre corner
A little further on is Muck-
cippi Creek which is too deep to cross
on acct of the freshet now

Returned to temporary post at
Co line & moved it 16 $\frac{3}{4}$ links north & 47 links east at N° 1
& took the following witness trees. A water Beech
4 in in diam bears S 46° W 78 links distant & a
swamp ash 11 in. diam. bears N. 70 $\frac{1}{2}$ ° W. 78 links distant

South on County line through Sec 36.

20th

Line fence crosses

40th

Line fence crosses

52nd

Line fence running west

60th

Line fence running east

80th

Boulder corner stone at N° 2. $\frac{1}{4}$ Sec corner bit
Sec 36. To S R 7 E & Sec 1 To S R 7 E. Stone was set
by Jonathan Counts in east & west road that
now trees gone

Bearing of line S 1° 25' E.

Continued south on Co. line through Sec 1

20th

40 acre corner stone

40th $\frac{1}{4}$ Sec line fence crosses60th

40 acre corner stone -

80th

Small boulder in east & west road possibly
intended for $\frac{1}{4}$ cor. but sees 1 & 12 at N° 3
Here the original witness trees are also gone

Traveled west to corner of secs 1, 2, 11, & 12. Corner stone
at C.

East in road on line but sees 1 & 12.

40th

Strike 2 links north of stone at Co line

75th

Corner to secs 1, 6, 7, & 12. at C.

The original field notes length of line, is
west half 40⁰⁰ chains & east half 35⁴⁶ chs, whole
length 75⁴⁶ chs. The excess of 60 links is divided
proportionally to the lengths of the east & west
halves of the line This gives the Co line
40.32 chains east of the west line & 35.46 chs
west of the east line of the section. Ret'd to
County line & planted boulder at $\frac{1}{4}$ corner on Co line
2 links west & 2 links east of stone already there at N° 3.

Bearing of line S. 1° 29' E. July 18 1884

Continued south on Co line through Sec 12

470²⁰ 1/4 Sec line

546⁰⁵ Line running west

69⁰³ Line running east

80⁴⁰ Centre of Stephenson pile at No 2 no corner marked and witness trees gone Set temporary posts on north & south sides of pile each 12 links from centre Traveled west to cor. of Secs 11, 12, 13 & 14 at

4038 x D. East on line Set sec's 12 & 13 Intersect temporary posts at Co line on Stephenson pile at No 4.

75⁵³ x Corner of Secs 7, 12, 13 & 18 at D. The original field notes give the east half of the line 35.21 chs & the west half 40 chs, whole length 75.21 chains. The excess of 38 links is divided proportionally between the east & west halves of the line. Placing the Co line 40.20 chs east of the west line & 35.39 west of the east line. Returned to Co line & moved posts 18 links west to true point of intersection at No 4. Bearing of line S. 1° 55' E.

Continued south on Co line through Sec 13 S. 1° 8' E

20⁴² Line running east

22⁰⁰ Line running west.

40²⁵ Supposed 1/4 Sec line

60³⁸ Centre of road running east & west

80²⁵ Strike 1/4 corner post bet sec 13 & 24 on Co line a point for monument No 5

Cont'd south on Co line through Sec 24.

40²⁵ Centre of road running east & west.

60²⁵ 40 acre line

80²⁵ Strike 1/4 cor post bet sec 24 & 25 on Co line at point for monument No 6 Bearing of line S. 1° E

Continued south on Co line through sec 25

20⁰⁷ 40 acre line running east.

40²⁰ Strike 1/4 cor stone in centre of sec.

54²⁰ Line running west

80⁴⁰ Strike 1/4 cor stone bet sec 25 & 26 at point for monument at No 7 Bearing of line S. 1° E.

Cont'd south on Co line through sec 26

10³⁰ Run creek across here.

10⁵⁵ Line runs east.

26⁶⁵

Strike stone in pile on Greenville Treaty line at N^o. 8. Bearing of line S 1 1/2° E

All the corners given are at the magnetic bearing.
 Feb 9th 84

The line is marked by sand stone monuments four feet long & twelve inches sq. The tops are dressed pyramids with the apex 6 in high & the four sides are dressed smooth 12 in down making each face 12 in square. The other part 30 in is left rough & buried in the ground. The monuments are in variably planted on the co. line & at the intersection of the co line with the section lines except where there is a road or section line and at the south end at the river where they are planted 20 feet either north or south of the sec. lines.

All the monuments except the one at the north end of the county line, were set by & in the presence of D. W. Pampel Dep Co Sur of Shelby Co O. & J. A. Buchanan. Co Sur of Logan Co O. E. Cantwell decomp loss & Kellis Jackson & James Stewart helpers (last two named men are colored) July 10th 1884.

Set monument No 15 25 feet north of average waters edge of Great Miami River & 15 feet north of stone on lands of J. H. Pool & B. J. Allbaugh. The monument has the following inscription on the four sides North side S 20 T 1 R 8 south side 1884 east side Logan west side Shelby

Set monument No 14 on Co line 25 feet north of line bet sec 17 & 20 Tp 1 R. 8. E. with the following inscription North side S 17 T 1 R 8 south side S. 20. 1884. east side Logan west side Shelby

Set monument No 12 set at intersection of co line with line bet sec 5 & 8 inscribed as follows North side S 5 T 1 R 8 south side S. 8. 1884 east side Logan west side Shelby -

Set monument No 13 at intersection of Co line with line between sec 8 & 17. Ins - north side S 8 T 1 R 8 south side S 17 1884 E side Logan west side Shelby -

Set monument No 11 at intersection of Co line with Tp line bet sees 5 + 32
Tps 1 + 2 Inscriptions north side S32 T2 R8
south side S. 5. T. 1. R. 8. 1884 east side Logan west
side Shelby.

Set monument No 10 on county line
20 feet north of line between sees 29 + 32 on
Stewart pile Inscrip. North side S29 T2 R8
south side S. 32. 1884. east side Logan west side Shelby
There is also a boulder at the corner in pile
- July - 17 - 1884 -

Set monument No 9 on co line 20 feet
south of Greenville Treaty line Ins North side
S36 T7 R7 south side S. 29. T. 2. R. 8. 1884 east side Logan
west side Shelby

Set monument No 8 on co line 20 feet
north of Greenville Treaty line bet See 29 T2 R8
+ Dec 36 Tp. 7. S. R. 7. E. Inscriptions as follows
north side S36 T7 R7 south side S29 T2 R8 E east
side Logan west side Shelby. There is also
a boulder at the corner in pile.

At No 7 the corner stone already
set was removed & monument set in
its place at intersection of Co line with line
between sections 25 + 26 Inscriptions North
side S. 25. T. 7. R. 7. south side S. 36. 1884. east side
Logan west side Shelby.

Monument No 6 was set at the in-
tersection of county line with the line bet
sees 24 + 25 Inscriptions as follows north side
S. 24. T. 7. R. 7. south side S25 1884. east side
Logan west side Shelby

Monument No 5 was set at Int. of the
county line with line between sees 13 + 24
Inscriptions as follows - north side S. 15. T. 7. R. 7.
south side S. 24. 1884. east side Logan west side Shelby.

Set monument No 4 on Co line 20
feet north of line between see 12 + 13 Ins-
criptions as follows north side S. 12. T. 7. R. 7. south side
S. 13. 1884. east side Logan west side Shelby.

July 1884 Set monument No 3 on Co line
20 feet north of line between see 1 + 12 Ins as
follows north side S. 1. T. 7. R. 7. south side S. 12. 1884.
east side Logan west side Shelby.

Set monument. No 2 on Co line
25 feet south of Tp line between sees 1. T. 7. R. 7.
7. E. + S. 36. T. 6. S. R. 7. E. with inscriptions as follows
north side S. 36. T. 6. R. 7. south side S. 1. T. 7. R. 7.
east side Logan west side Shelby. Stone

Adjourned to meet hereafter with the Co. Surveyor of Auglaize Co or his representative to set the monument at the north end of the county line between Logan & Shelby Cos on the south line of Auglaize Co Aug 25th 1884

By a previous appointment Saml Craig suror appointed by Auglaize Co. Met this day with J. A. Buchanan & D. W. Pampel to set monument bet Auglaize, Logan, & Shelby Cos. S. S. Craig son of Saml Craig was also present. A careful search was made to discover if possible remains of the original witness trees no traces being visible above ground except a slight unevenness of the ground which was examined and found to contain a whole lined with oak bark the top root having disappeared entirely from this the course & distance was measured to where the corner should be at the post & from the point the course & distance was measured to where the Ash should have stood & the ground dug open shows remains of ash roots. This was regarded as sufficient evidence to locate the corner & monument. In making the excavation for the monument we were rewarded with additional evidence & positive proof of the corner at this place. By finding the the points of two old posts one having the appearance of being thirty or forty years old & the other one half that age. A whole in which the original corner post stood was planned to be seen also. All of these marks were about 18 in. below the surface of the ground & within an area of 1. ft. sq.

Set monument N^o 1 at intersection of Co. line bet Logan & Shelby & sec. line & co. line. Bet Sec 25 & 26. T. 6. S. R. 7. E. Auglaize Logan, & Shelby Co. Suror north side AUGLAIZE Co S. 25. T. 6. R. 7. south side COUNTY LINE S. 26. 1884. On east side LOGAN & west side SHELBY.

Dec 19th 1884 D. W. Pampel Co Suror Shelby Co. O

Dec 19th 1884 S. A. Buchanan Co Suror Logan Co. O

Co Suror Shelby Co

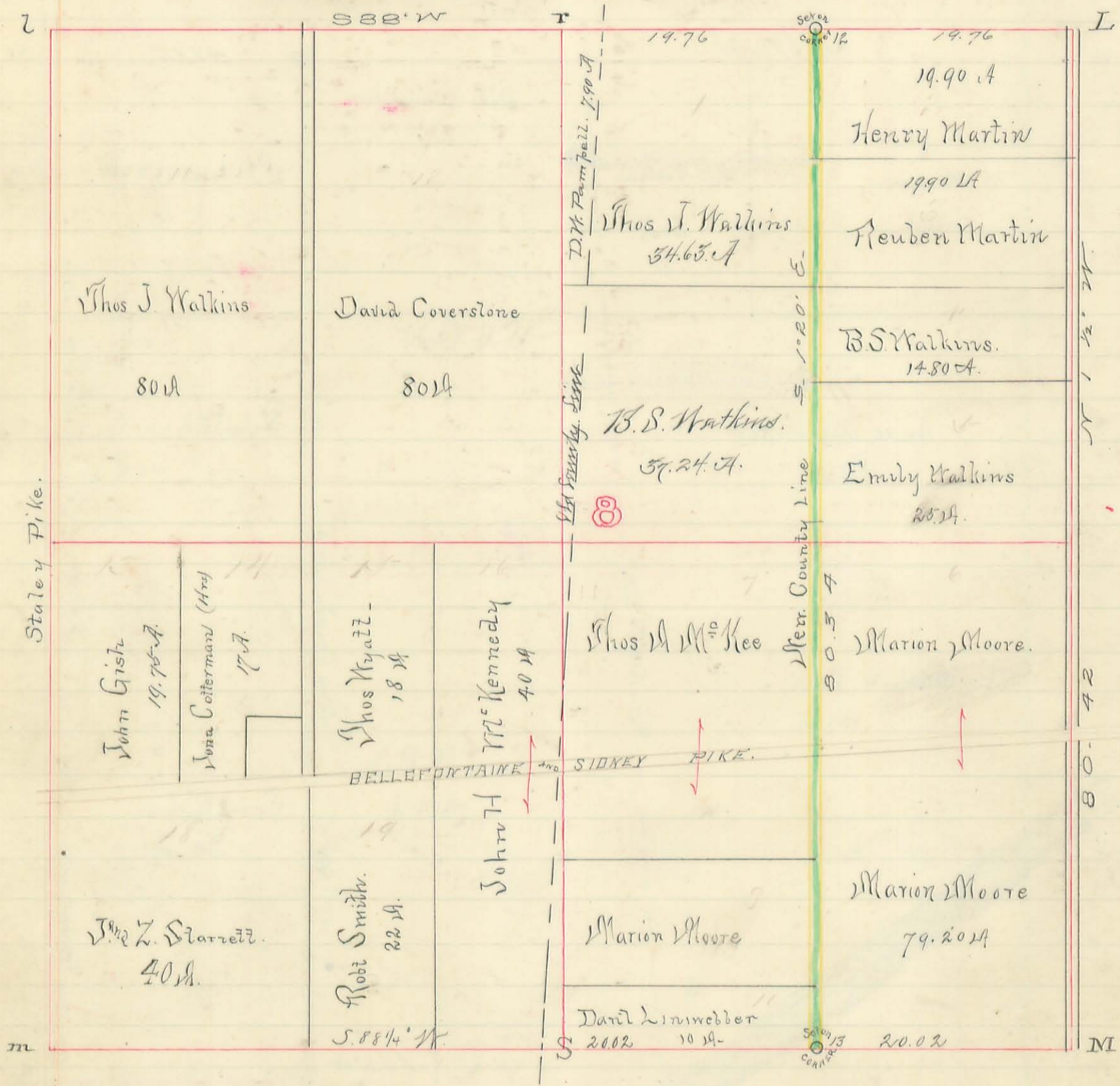
See Report - Drawn R.
Bloomfield Twp.

Plot of Sec 8. T. 1. R. 8.

Shelby and Logan County Line

(370)

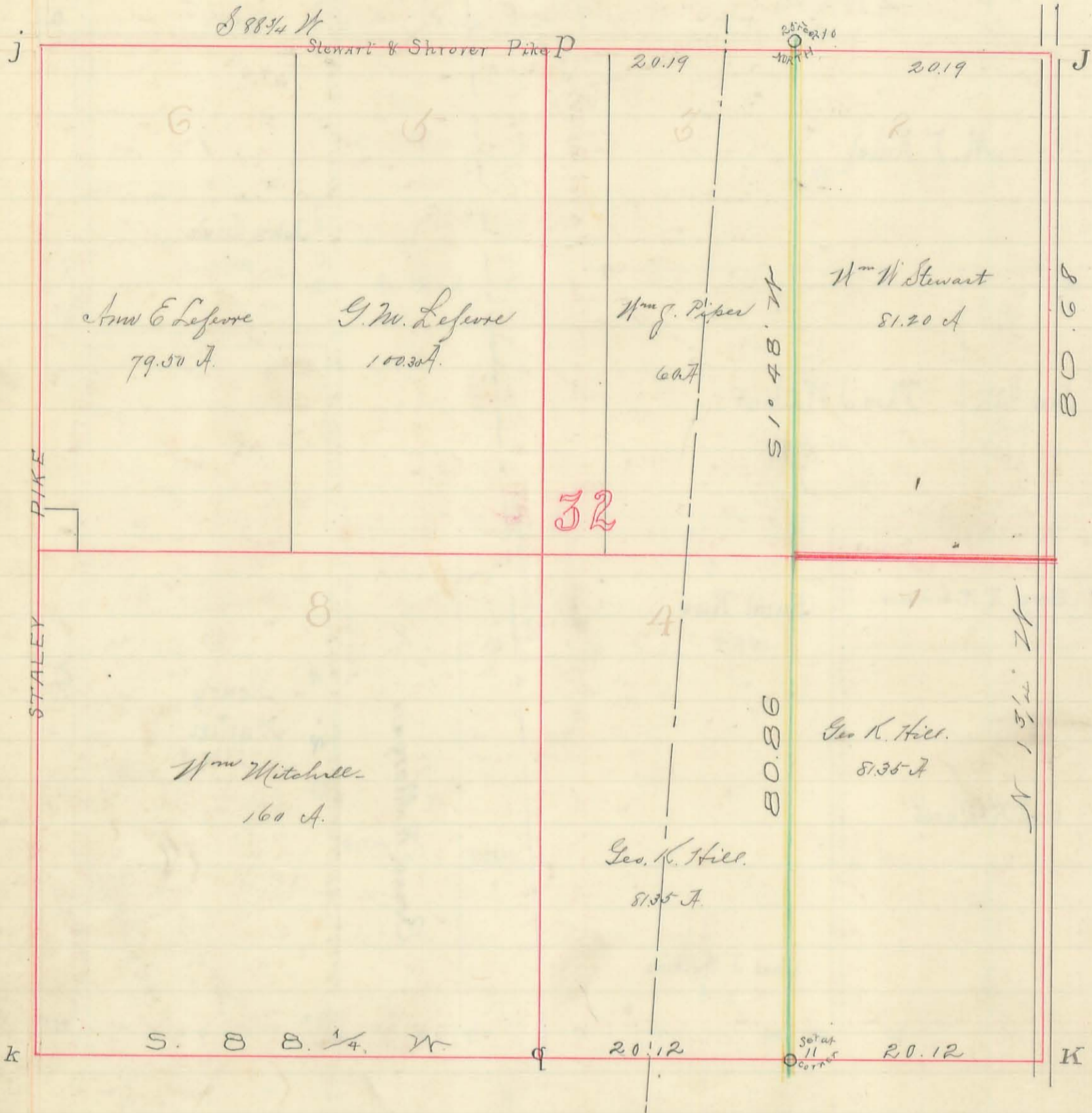
INDEXED ON MAP



PLAT of Sec N° 32. T. 2. R. 8.

(373)

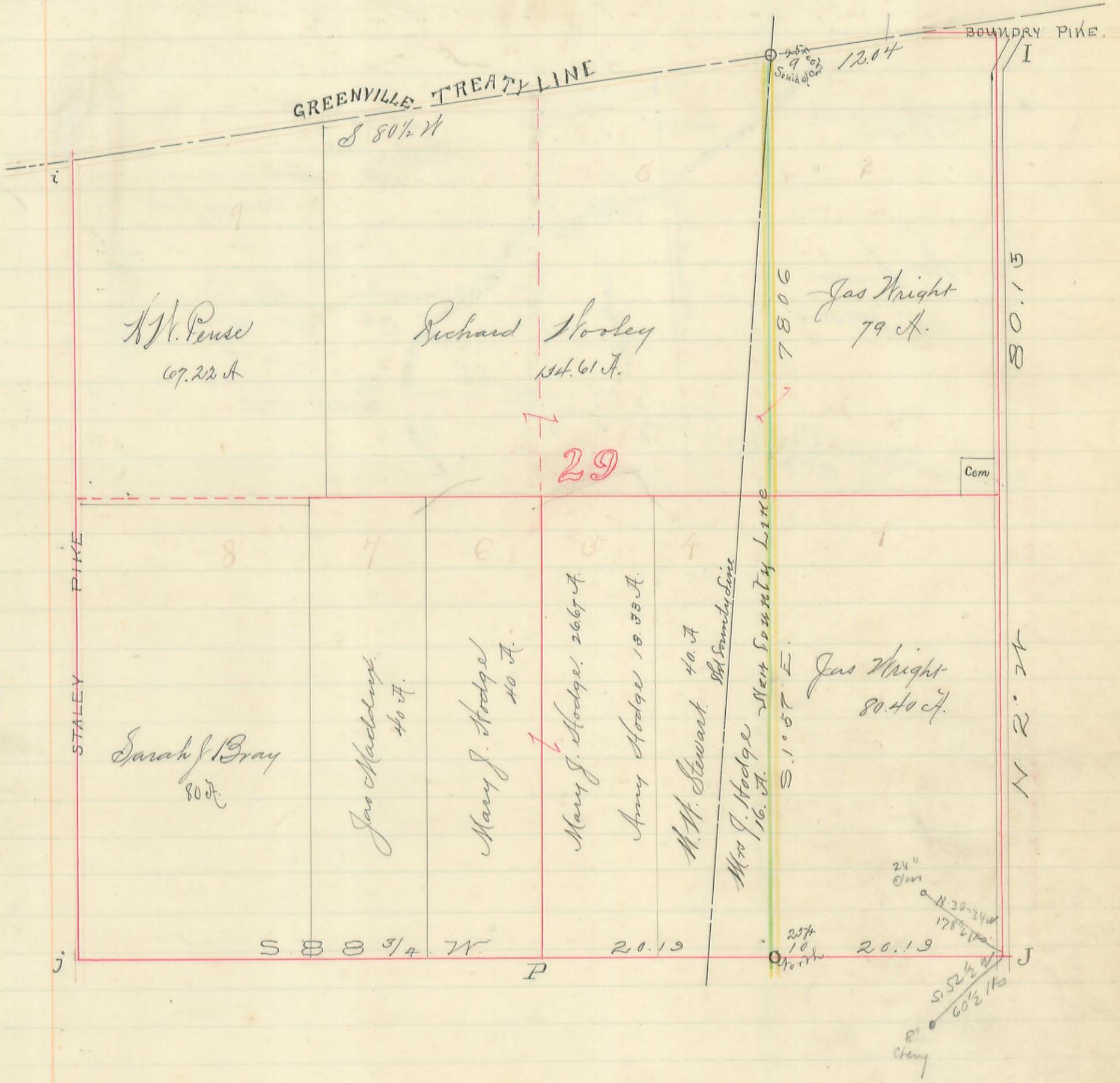
Shelby and Logan County Line INDEXED ON MAP



PLAT of N° 29. T2 R. 8.

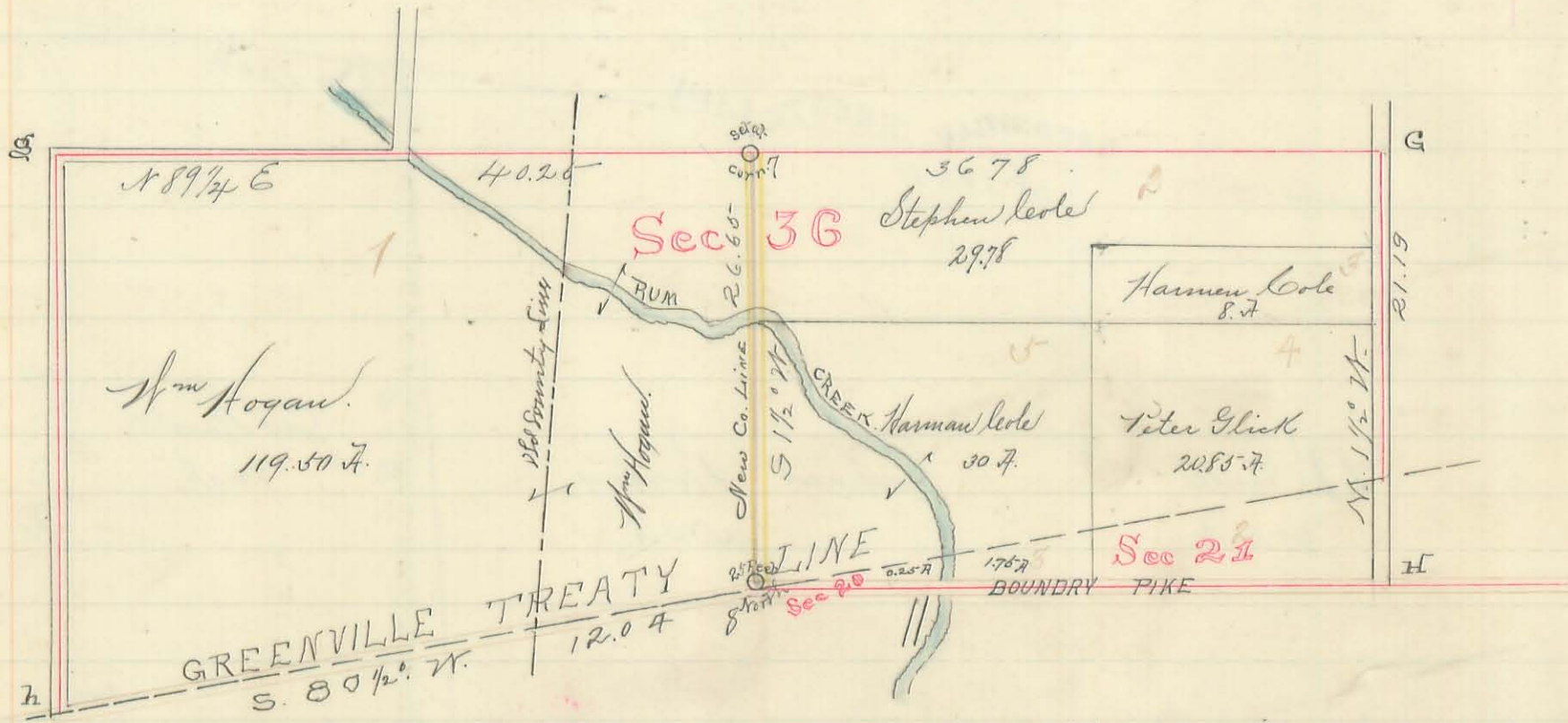
Shelby and Logan County Lines

344



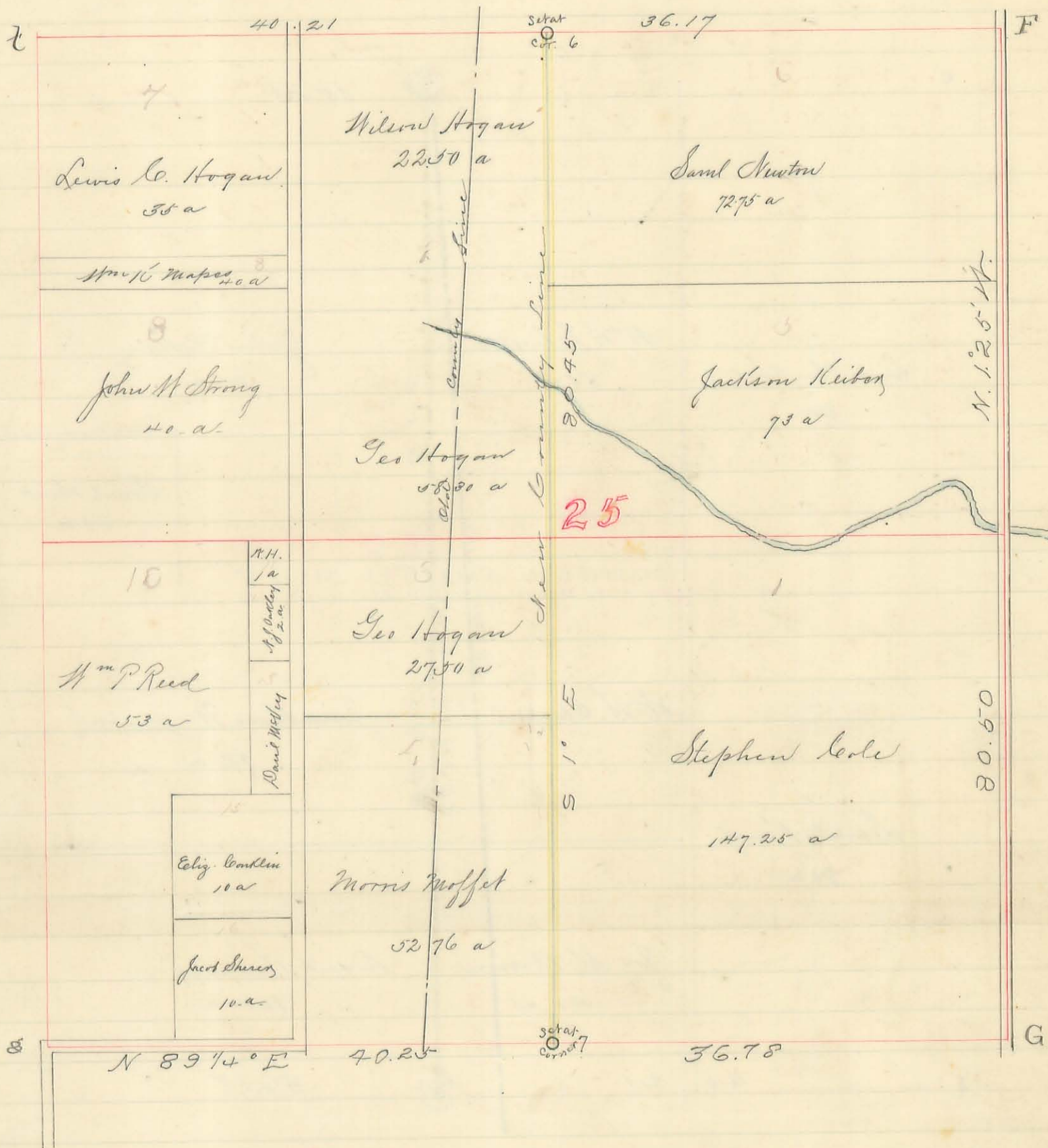
Plot of Secs. 20+21 T2R8. ^{1/2} V² 36 T7R7

Shelby and Logan County Line



Plat of Sec. 25 T.7. R.7.

Shelby and Logan County Line



Plat of Sec 24. T. 7. R. 7.

Shelby and Logan County Lines

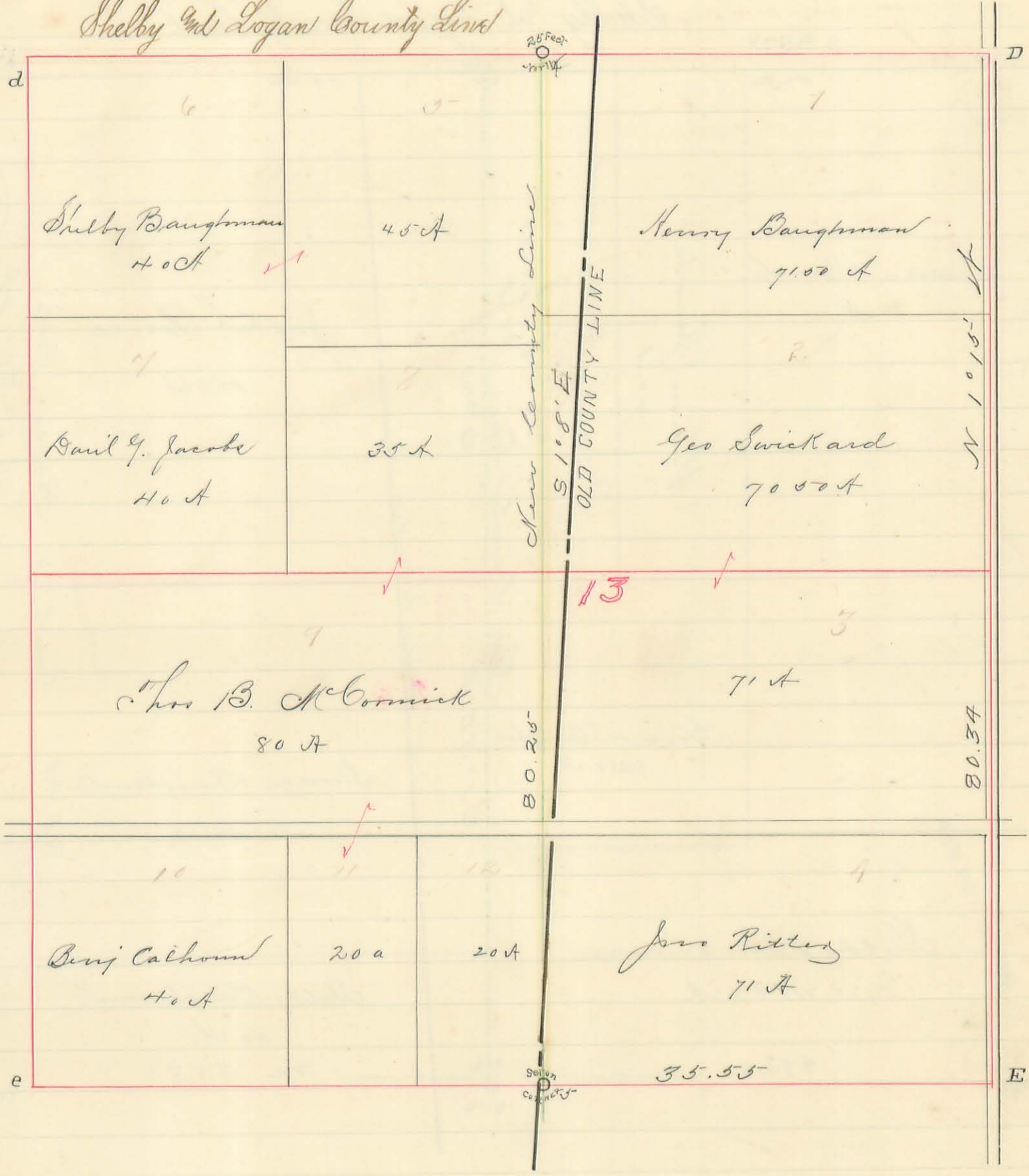
347



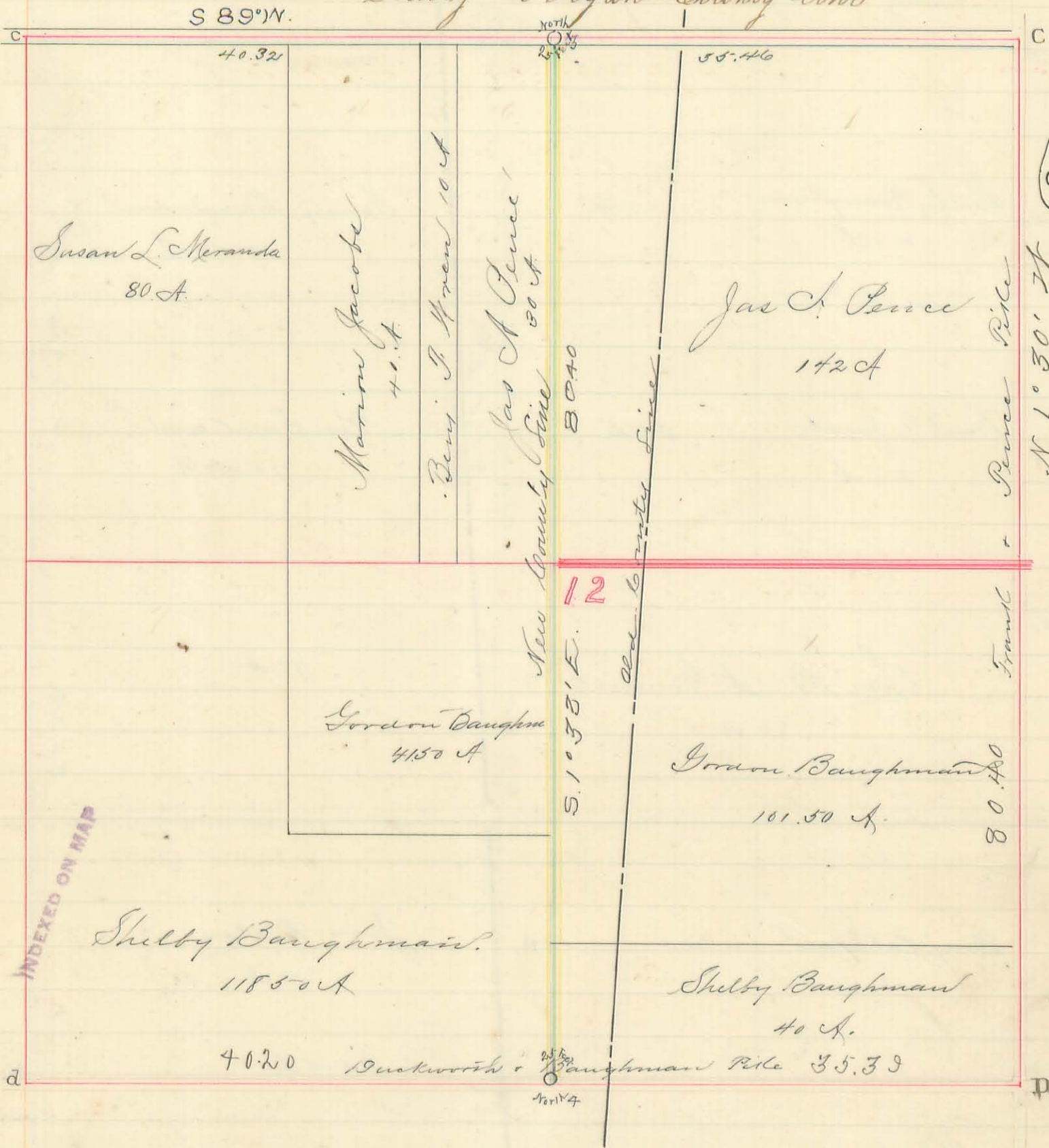
Plat of Sec. 15 T. 7. R. 7.

Shelby vs Logan County Line

348



Plat of Sec 12 T7. R.7.
Shelby and Logan County Lines



INDEXED ON MAP

349

INDEXED ON MAP

350

INDEXED ON MAP

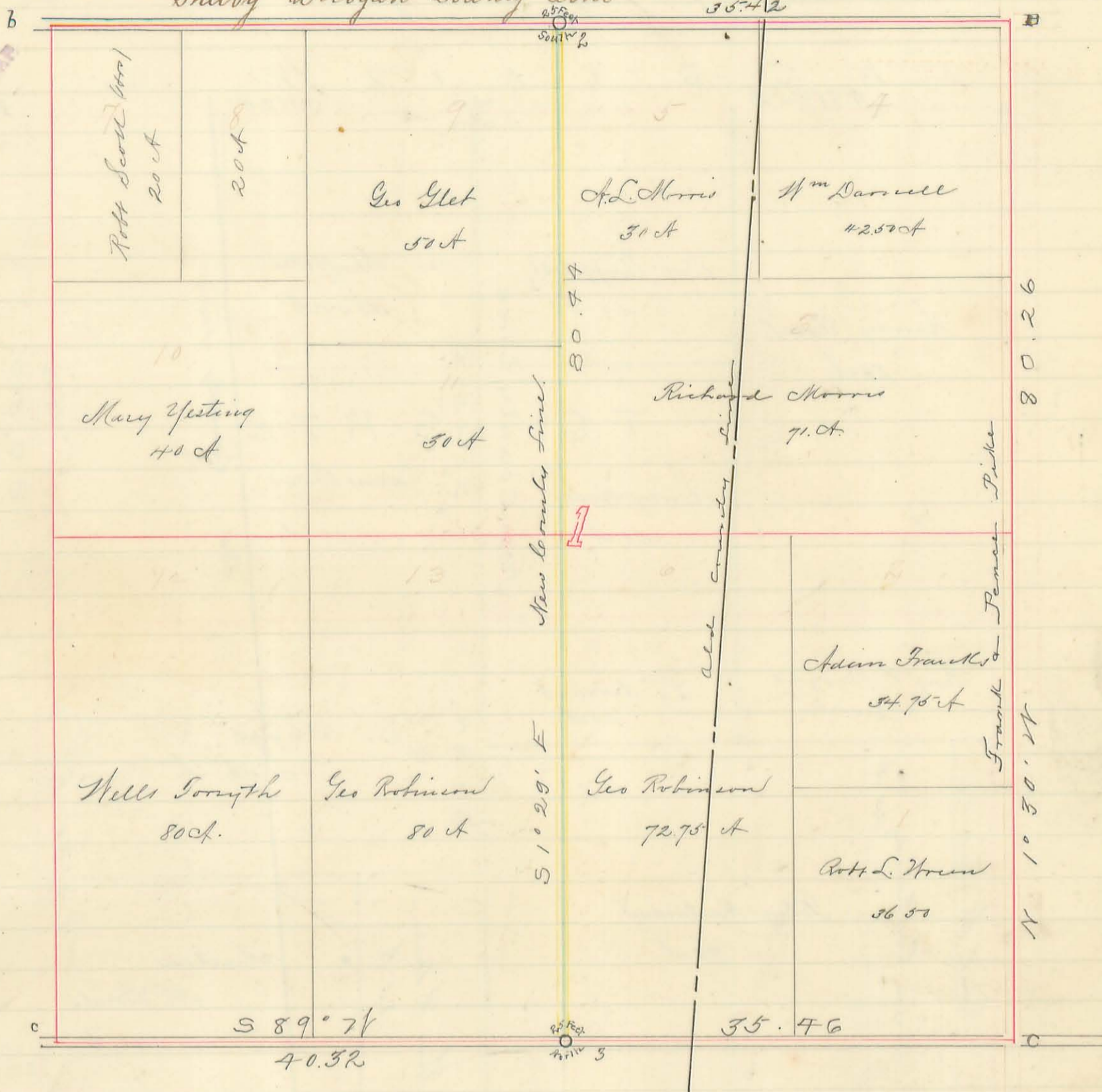
10/14

Plat of Sec 7 T. 7. R. 7.

Shelby and Logan County Line

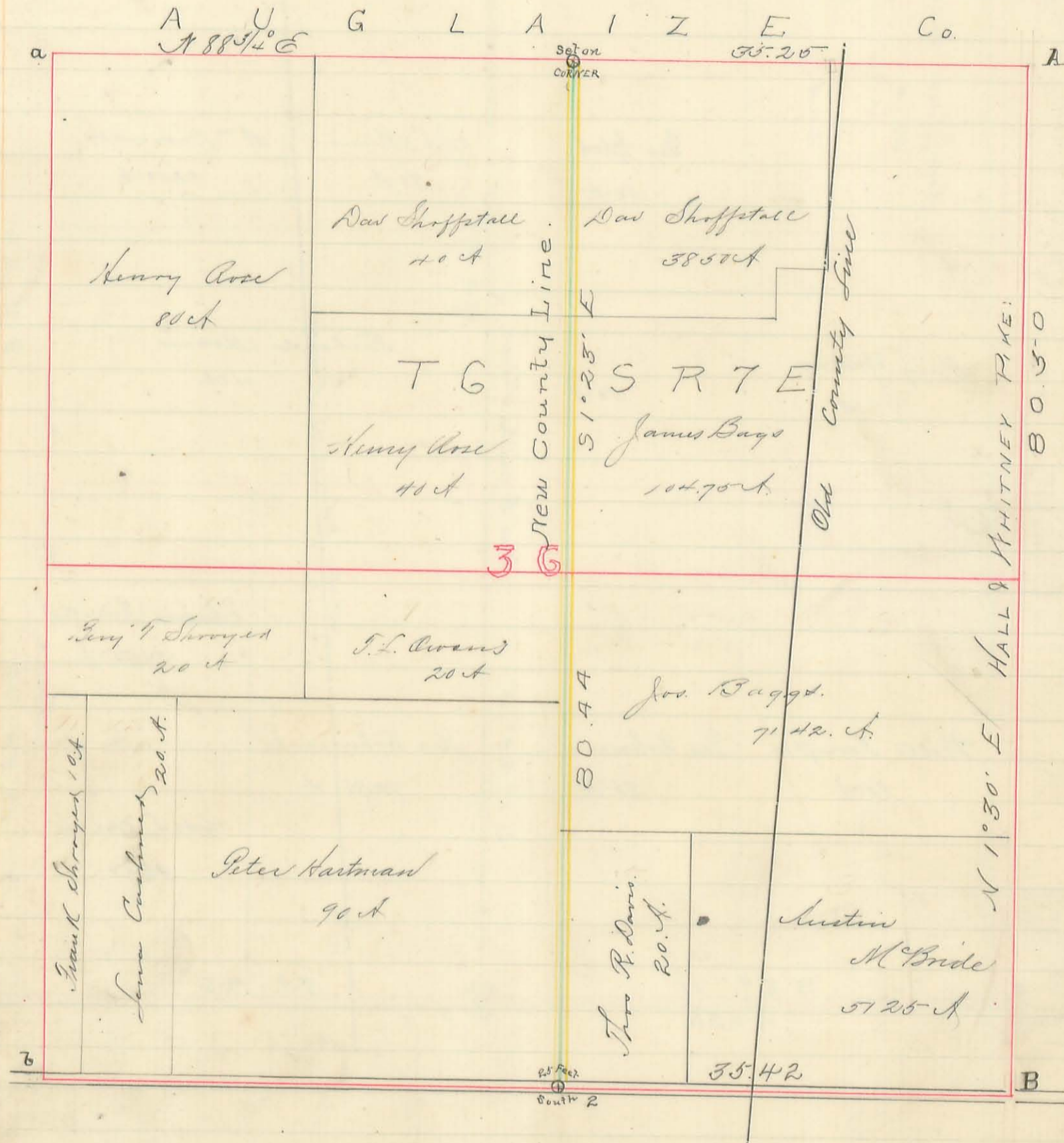
35

INDEXED ON MAP



Plot of Sec. 36. T. 6. R. 7.

Shelby and Logan County Lines



Shelby Co Line

121

- To the clerk of the Court -
- of Common Pleas of -
- Logan Co Ohio -

The undersigned surveyors of Shelby & Logan counties make the foregoing report of the survey, location & marking of the new county line bet Shelby & Logan Cos. north of the Great Miami River as changed & established by the Sixty Fifth Genl Assembly of Ohio Apl 11th 1883. as follows to wit.

That the boundary line between Logan & Shelby Cos be changed so as to run parallel with section lines instead of angling across them as it now does to wit:

That said line be located on the north & south centre line of sec. no. thirty six Township six south Range seven east & sections one, twelve thirteen twenty four twenty five & thirty six of Township 7 south Range seven east to the Greenville treaty line. Thence north & west to the east half of section twenty nine township two Range eight east thence with the line through the centre of the east half of said section no. twenty nine & section no. thirty two Range eight east & sections five eight seventeen & twenty to the Great Miami River.

See Laws of Ohio Vol 80 1883 Page 324.

Logan & Shelby Co. Line Report

Drawer R. - Bloomfield Twp.

Hardin & Logan County Line. Field notes

February 18th 1884. Surveyors. Samuel Craig of Auglaize Co
N. H. Colwell of Hardin Co. & S. A. Buchanan Logan Co.

Chains	Random Line, No. One
0	North with Range line and road. Course $N 1^{\circ} 10' W$
11.55	North east corner Sec 36 Town 6 Range 7. in center of pike, Center bridge over Muchinippi Creek.
22.00	Set stake in line. Lyons log house on west.
40.00	" " " " at 15 links east of center gravel on pike
40.09	Fence 1/2 section line on west.
45.00	Center Muchinippi pike in Sabita Fee. E of end of Hall & Whitney pike.
60.00	Set stake in line
80.00	" " " " one mile
80.25	Section line west.
100.00	set stake in line
100.29	Fence west.
120.00	Set stake in line
120.29	Line Mrs. Liddle of St. L. Neal. quar Sec line Sec 24 Town 6 R. 7.
140.00	Set stake in line 2 poles north of log house east
140.57	Fence west.
160.00	Log yard saw mill east.
160.89	Fence west
164.16	W. Oak 8" di. live tree, 2 flazes called co. line tree by natives, west 296 1/2 links
167.42	Stone corner sections 17 & 18. Town 6 Range 8 at Ford Castle & Huber pike,
180.00	Set stake in line
197.00	East end Five Points pike in Auglaize County.
198.46	center of small bridge over Wolf creek ditch
240.00	Move east 10 fut. thence continue $N 1^{\circ} 10' W$
247.19	Stone corner sections 7 & 18 Town 6. Range 8. pass 1 link nr. of stone
280.30	Quarter section line in Sec 12. T. 6. R. 7.
287.58	" " " " " 7 " " 8
297.40	Ash stump called co. line tree by Madison Copeland
297.27	Shel. Hickory 32" di. old county line tree marked, east 184 links
280.00	Lynn county line tree east 325 links
295.00	set stake. Beginning of Random line No. 2

Hoardine of Logan County Field Notes.

Random Line No. 2

Dunroyne Craig. Colwell & Buchanan

Line East on course S 88 E.

- 0 At point 295 chains on Random line S 88 E.
 40.00 Set stake in line
 80.00 Road north of south fall 2,80 chains north of quar sec corner, more north 3 chains
 115.00 Muchinippi Creek 50 links wide runs southward.
 129.08 Center public road.
 160.79 Center road on sec line, pass 140 links north of quar sec cor. in Secs 8 & 9.
 180.90 Pass 28 links north of stone at S.E. cor. nr. 1/2 N.W. quar Sec. 9. T.B. R.S.
 186.00 Cross quar sec line in Sec. 9.
 220.42 Center of Levistown of New Hampshire Free Pike
 238.56 Old Hickory stump 24" di. One of Marmons tree at his 22 mile post.
 267.92 Beech 22" di. south 13 links. old county line tree.
 321.73 East line of Section 10. at 8.12 chains south of quar sec cor.
 343.16 center of public road at Beatty's house
 349.84 Cottonwood 24" di. south 5 links
 344.96 South east corner of Beatty's frame barn, line just missus barn. luck.
 361.17 Roberts line of east line of Sec 11. at 31.75 ch. north of the south east cor said Sec.
 398.88 Oak 14" county line tree south 103 links
 403.00 Beech " " " " 100 "
 410.00 Blk. Oak " " " " 109 "
 426.78 Center public road in Surr 12276. called Black road.
 426.78 set south 129 links thence continue S 88 E.
 427.37 Hickory county line tree north 5 links
 454.59 set stake on west bank of branch.
 455.08 Beech 14" di. county line tree north 1 link
 464.75 Cross Hoog creek
 466.00 chan. " " north 2 poles
 479.00 Beech 16" di. old county line tree south 95 links
 500.00 set stake in line
 503.05 Beech 18" di old county line tree south 128 links
 510.00 Set stake near west side of Round prairie so called.

Hardin & Logan County line. Field Notes.

Sept 8th 1884. Random Line No 3.

Surveyors Buchanan Craig & Colwell.

Chains	Course	Notes
0	N 87 1/2 W. (East line of Logan co. bears S 2 1/2 W)	Bera Stone Monument North East corner Logan County.
7.37		Center Mt. Victory free pike,
19.00		enter timber
20.00		set stake in line
44.34		Ash 14" county line tree north 2 links
46.20		cross south line Surr 12280
82.66		center public road in Surr 12280
		At 2 o'clock p.m. diurnal var. needle bearing 17°
211.55		cent east street in Ridgeway
218.67		West side Hardin street in Ridgeway at point 130 links south of Marmou line
224.22		Cent Main Street Ridgeway " " 110 " " " " "
231.13		Move south 2.00 chains and thence N 87 1/2 W
264.64		Cent C. C. & P. Ry.
288.34		Move north 2.00 chains and thence N 87 1/2 W
313.10		" " 1.00 " " " " "
338.41		center public road of west line of Surr 10239.

Pot-pourri

1884 Nov. 19th 4 o'clock p.m. On Bates land in Surr 12276 at 510 chains of Random Line No 2. present Samuel Craig & Samuel Buchanan N. H. Colwell failed to appear. misunderstanding. find bearing of R. L. No 2. to be S 87 3/4 E.

Nov. 20th Start at stake in Round prairie south east corner Surr 12276 thence N 7 1/2 W with east line of said Surr. At 2.91 ch. cross the ditch. At 24.25 ch post, as shown by plat J. B. McLaughlin Surr. 1837 for co line. Start at said post and run N 87 1/2 W 10.00 ch. found no marks for county line. Satisfied this point was not on or near county line and that plat was in error. Returned to Sta. 5.00 chains on Random line No 2. thence producing said line S 87 3/4 E to point 507.44 ch. Thence N 2 1/2 E 143 links to Beech 24" di. old county line tree. cut blocks each side of tree found marks 50 years old. The tree being liable fall from "flocking" cut it down. This tree was noted as "Beech No 1" and made it a permanent point on county line. Start at said Beech No 1 and run N 4 E 16.83 chains to Sta 1495.48 chains on Transit line No 1.

Dec 2nd 1884. Surveyors Craig & Buchanan start at Beech No 1 thence N 86 W. at 24.84 chains Beech No 2. 15" di county line tree. blocked marks 50 years old. N 4 E 17.37 ch to Sta 1520.32 chains Tr. line No 1. course of transit line N 85 3/4 W at 9 o'clock a.m. Dec 2-84. At 30.00 Beech No 3. 16" di. blocked marks 50 years old. At 47.61 chains Beech No 4. 18" di blocked marks 50 years old. From Beech No 4 ran N 4 E. At 84 links cross Random line No 2 and at 17.87 strike transit line No 1 at Sta 1543.09 ch.

Made Beech No 4 the place of beginning for Random line No 4

Heard and Logan County line Field notes.

Dec 2nd 1884. Random line N^o 4 in Surr. N^o 12276

Surveyor Craig and Buchanan
 Course N 87 W.

- 0 Buch N^o 4. See Pat-pourri. Bot page 124.
 7.78 Buch N^o 5, 28" di. north 51 links, dead counted marks 45 years old
 21.14 Post 53 links south of Sta 440.00 chains on Random line N^o 2.
 24.36 Buch N^o 6 13" diam. dead north 28 links. Wood too decayed to tell age of marks
 25.21 Buch N^o 7 22" " " " 36 " marks 45 years old. tree dead 4 to 8 years
 31.14 Post 39 links south of Sta 430.00 chains on Random line N^o 2
 33.83 Hickory 20" dia tree north 40 1/2 links, See Random N^o 2 at 427.37 at 5 links south.
 35.36 Post 34 links south of offset on Random line N^o 2 at 426.78 ch.
 37.00 " 14 links east of center Black road. End of Random N^o 4.

Random Line, N^o 5.

Surveyor Craig and Buchanan.

Dec 3rd 1884. Course S 87 E

- 0 Buch N^o 1. See Pat-pourri. Opposite page;
 4.55 Buch N^o 8 32" diam. south 4 links. marks 45 to 50 years old
 9.00 West side of round prairie.
 14.00 Point of timber protrudes from north into round prairie. cross point
 17.74 East line Surr 12276. at N 7 1/2 W 14.79 ch. from stake in prairie South E. cor. Surr.
 33.38 Ash 14" N^o 9. north 6 links. marks 45 to 50 years old.
 35.00 Center small timber and thick under brush. no large trees.
 50.00 leave " " " " " " Center open country.
 58.67 Post. log house. called on co. line by natives bears S 3 W 4.58 chains.
 65.30 Terose point of timber from north.
 75.34 Post west side Timberlake road. post called co. line S 3 W 4.53 ch.
 85.55 center Timber lake road line Surr 12277 (10000 a) E/12277 (5000 a)
 100.00 Ash and Elm swamp 10 chains wide
 104.16 Swamp ash N^o 10. 19" diam south 75 links. marks 45 to 50 years old
 From Ash N^o 10 S 4 E 15.24 chains to Sta 1391.29 Transit line N^o 1
 105.00 Move south 3 West 75 links to old county line
 110.00 Ash & Elm swamp.
 119.45 Apple tree, wild, in field. one of old Johnny Apples seeds trees (legend)
 128.69 Ash stump on Stamata land Surr 13393 called co. line south 87 links
 142.20 Sugar 20" di south side Stamata road. north 20 links called by natives co. line
 153.57 Elm 36" " west side Stamata prairie " 19 " " " " " "
 160.00 In wet prairie
 177.00 Set stake in line at about 5 poles east of line Stamata & Wilson. Surr 13403
 181.87 Buch stump 33" di. on west side Hunterville & R. pike. South 88 links. called co. line
 200.00 On land of Robert Wilson Surr 13334
 13341
 269.04 Buch N^o 11, 22" diam 88 1/2 links south. From Buch N^o 11 N 4 E 14.56 ch to Surr line
 N^o 1 at Sta 1226.70 chains. Move south 88 1/2 links
 273.18 Buch 24" diam N^o 12. north 3 links marks 50 years old
 278.58 Ash 20" diam. south 6 links. 3 plain hicks on east side of 1 diam hick west.
 282.09 Burr Oak 30" diam N^o 13 county line tree good, not blocked.
 282.75 Culvert on Zimmerman road called co line by natives south 99 links
 286.87 Hickory 14" diam N^o 14 south 7 links. co line tree good did not block it.