

APPROVALS

APPROVED BY THE BELLEFONTAINE PLANNING COMMISSION

THIS 30th DAY OF August, 2021

Foley C. Norris
DIRECTOR PLANNING COMMISSION

PRE-APPROVAL *Stephen J. ... 8-25-21*

PLAT CHECKED *Stephen J. ... 9-3-21*

TRANSFERRED THIS 8 DAY OF September, 2021

Carol Stein
AUDITOR LOGAN COUNTY, OHIO

RECORDED IN PLAT CABINET B, SLIDE 154 B

RECEIVED FOR RECORD AT 3:24 O'CLOCK P.M.

THIS 9th DAY OF September, 2021

Patricia A. ...
RECORDER, LOGAN COUNTY, OHIO



ENGINEER'S CERTIFICATE

I DO HEREBY CERTIFY THAT THIS ACCURATELY REFLECTS THE BUILDINGS "AS-BUILT" OR CONSTRUCTED.

Lee O. Jacobs
PROFESSIONAL ENGINEER

9-1-21

DATE



NOTES:

- EASEMENTS, IF SHOWN, ARE AS PROVIDED BY DEVELOPER. THE SURVEYOR DID NOT SEARCH FOR ADDITIONAL EASEMENTS.
- THE WORD "CERTIFY" IS INTENDED TO BE AS DEFINED IN OHIO ADMINISTRATIVE CODE #133-35-04(C).
- BUILDING HEIGHT FROM PEAK OF ROOF TO GROUND:

- UNIT 11 IS 16'8"
- UNIT 12 IS 16'8"
- UNIT 13 IS 16'8"
- UNIT 14 IS 16'8"
- UNIT 15 IS 16'8"
- UNIT 16 IS 16'8"

CURVE DATA

C1
R = 388.04'
Δ = 00°57'42"
L = 6.51'
CHORD = S. 05°08'12" W. - 6.51'

C2
R = 388.04'
Δ = 07°03'28"
L = 47.80'
CHORD = S. 01°06'52" W. - 47.77'

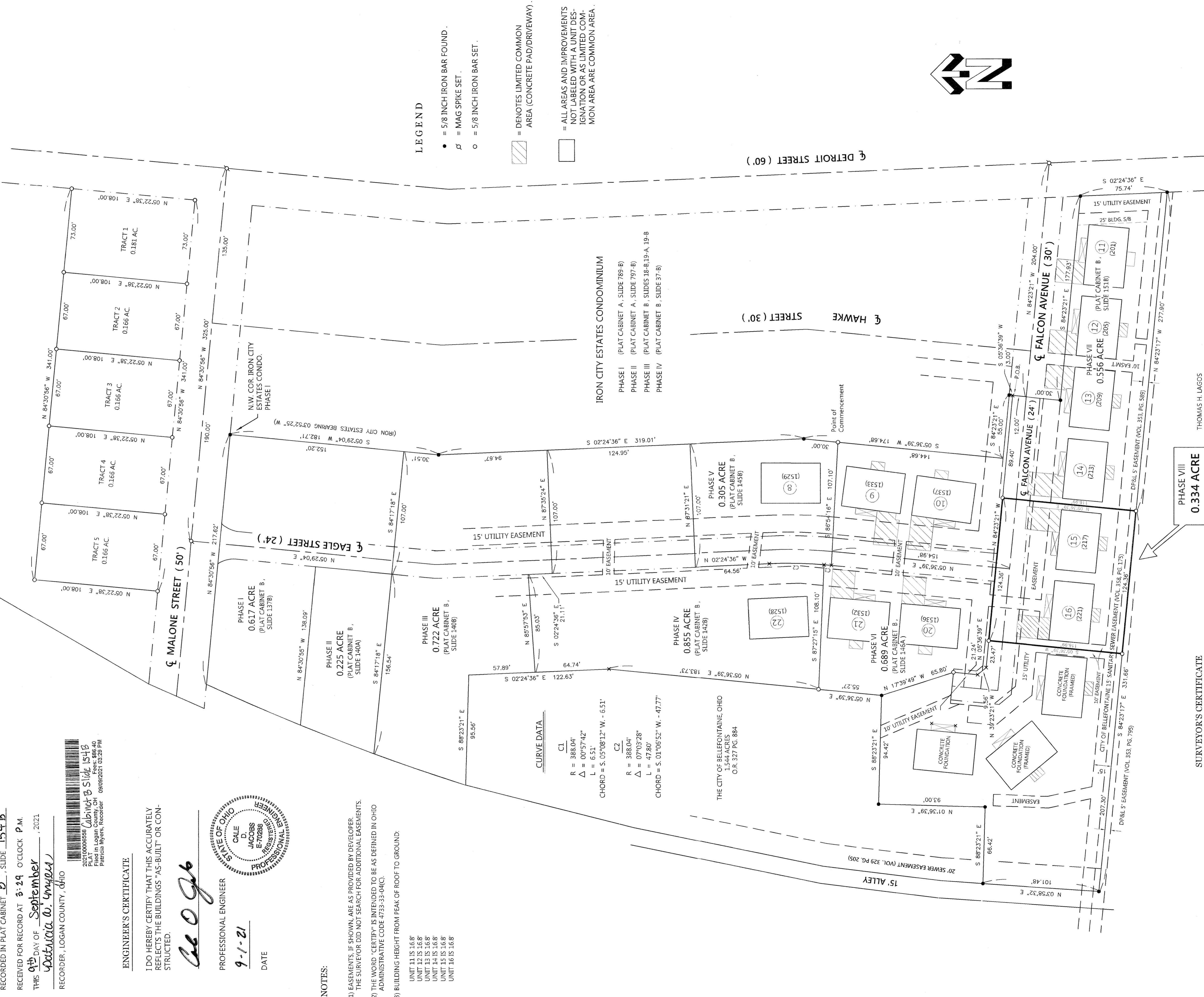
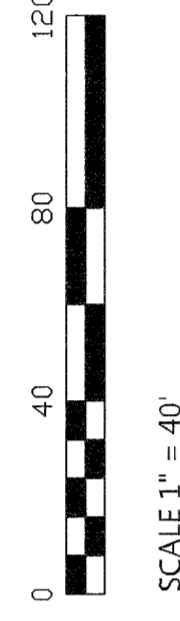
EXHIBIT 2 TO DECLARATION AND BYLAWS OF

EAGLES NEST CONDOMINIUMS
PHASE VIII
PEAK ASSETS LTD.

5.059 ACRE TRACT OFFICIAL RECORD 1301, PAGE 267

SECTION 33, TOWN 4, RANGE 14

CITY OF BELLEFONTAINE, LAKE TOWNSHIP, LOGAN COUNTY, OHIO.



LEGEND

- = 5/8 INCH IRON BAR FOUND
- ⊘ = MAG SPIKE SET
- = 5/8 INCH IRON BAR SET
- [Hatched Box] = DENOTES LIMITED COMMON AREA (CONCRETE PAD/DRIVEWAY)
- [Empty Box] = ALL AREAS AND IMPROVEMENTS NOT LABELED WITH A UNIT DESIGNATION OR AS LIMITED COMMON AREA ARE COMMON AREA.

IRON CITY ESTATES CONDOMINIUM

- PHASE I (PLAT CABINET A, SLIDE 789-B)
- PHASE II (PLAT CABINET A, SLIDE 797-B)
- PHASE III (PLAT CABINET B, SLIDES 18-6, 19-A, 19-B)
- PHASE IV (PLAT CABINET B, SLIDE 37-B)

GESLIN SURVEYING

595 S. SECOND ST.
COLDWATER, OHIO 45828
Phone: (419) 678-7233
Email: geslinsurveying@gmail.com

SURVEYOR'S CERTIFICATE

I DO HEREBY CERTIFY THAT THIS SURVEY OF EAGLES NEST CONDOMINIUMS PHASE VIII ACCURATELY REFLECTS THE LOCATION OF IMPROVEMENTS AND RECORDED EASEMENTS.

James W. Geslin
JAMES W. GESLIN
PROFESSIONAL SURVEYOR 7764
DATE: AUGUST 23, 2021



BASIS OF BEARINGS

THE BEARINGS CONTAINED HEREIN ARE BASED ON GPS OBSERVATIONS USING O.D.T. COIS NETWORK STATIONS CONVERTED TO THE OHIO STATE PLANE SOUTH ZONE, HORIZONTAL DATUM NAD83 (2011).

PHASE VIII
0.334 ACRE

THOMAS H. LAGOS
6.000 ACRES
O.R. 805 PG. 190