

APPROVALS

APPROVED BY THE BELLEFONTAINE PLANNING COMMISSION
THIS 19th DAY OF October, 2020

DIRECTOR PLANNING COMMISSION

PRE-APPROVAL: *Shirley A. Colburn 10-9-2020*
PLAT CHECKED: *Michael Colburn 10-20-2020*

TRANSFERRED THIS 20th DAY OF October, 2020

AUDITOR, LOGAN COUNTY, OHIO

RECORDED IN PLAT CABINET B, SLIDE 146A

RECEIVED FOR RECORD AT 3:33 O'CLOCK P.M.
THIS 20th DAY OF October, 2020

RECORDED BY: *Debra A. Myers*

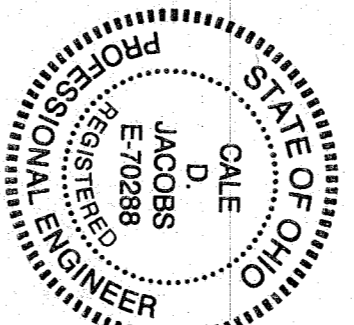


ENGINEER'S CERTIFICATE

I DO HEREBY CERTIFY THAT THIS ACCURATELY REFLECTS THE BUILDINGS AS BUILT OR CONSTRUCTED.

PROFESSIONAL ENGINEER

DATE: 10-14-2020



NOTES:

- 1) EASEMENTS, IF SHOWN, ARE AS PROVIDED BY DEVELOPER. THE SURVEYOR DID NOT SEARCH FOR ADDITIONAL EASEMENTS. ADMINISTRATIVE CODE 4733-33-04(C).
- 2) THE WORD "CERTIFY" IS INTENDED TO BE AS DEFINED IN OHIO ADMINISTRATIVE CODE 4733-33-04(C).
- 3) BUILDING HEIGHT FROM PEAK OF ROOF TO GROUND.

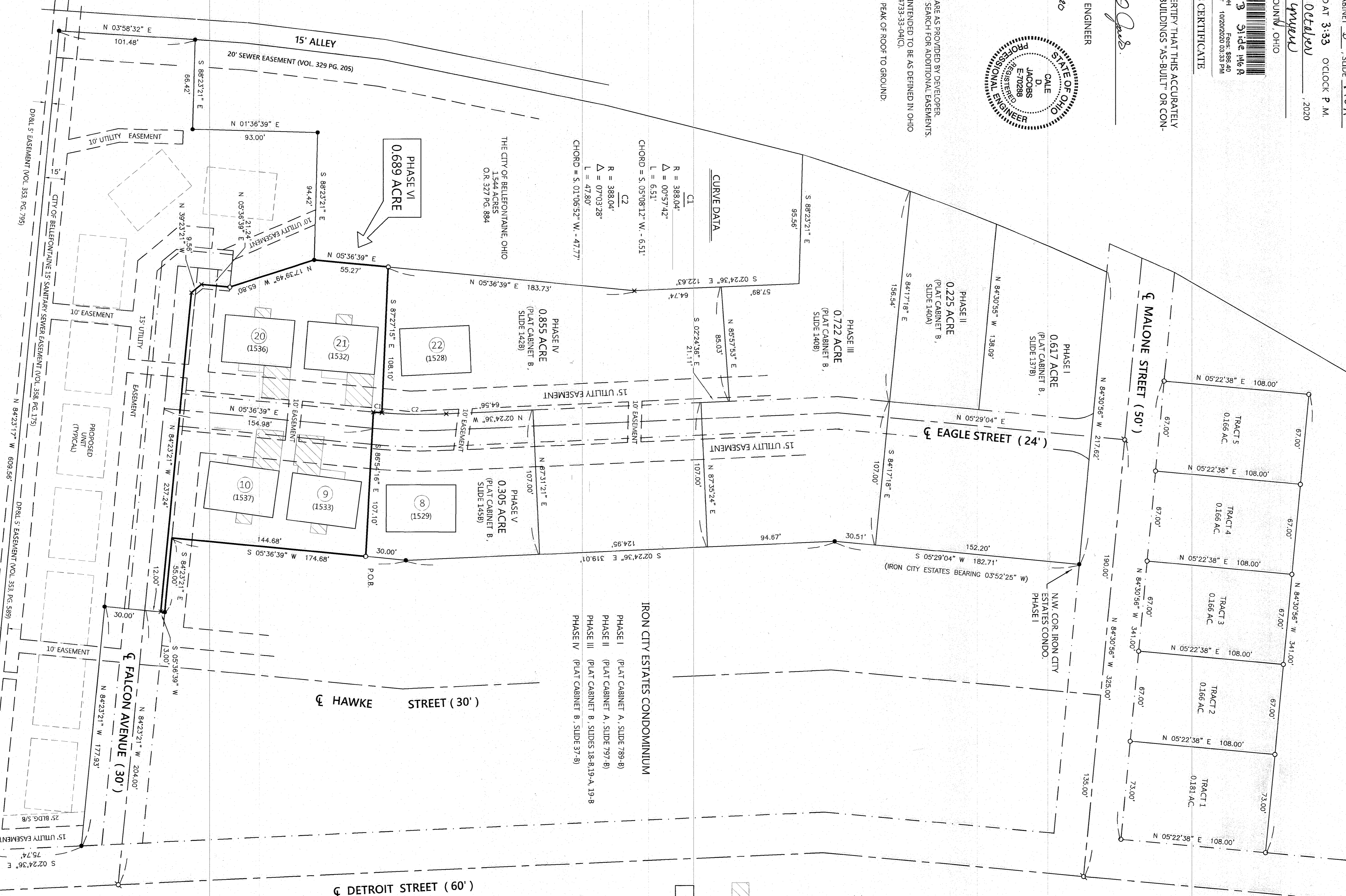
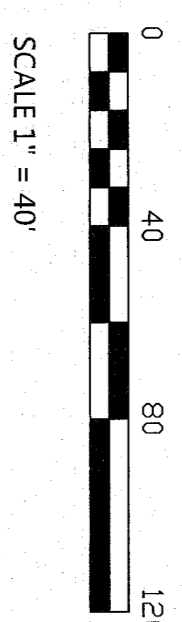
UNIT 915.168
UNIT 1015.168
UNIT 2015.168
UNIT 2115.168

EXHIBIT 2 TO DECLARATION AND BYLAWS OF
EAGLES NEST CONDOMINIUMS

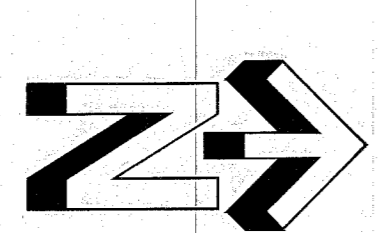
PHASE VI
PEAK ASSETS LTD.

5.059 ACRE TRACT OFFICIAL RECORD 1301, PAGE 267
SECTION 33, TOWN 4, RANGE 14

CITY OF BELLEFONTAINE, LAKE TOWNSHIP, LOGAN COUNTY, OHIO.



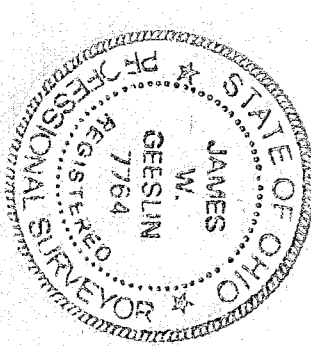
- LEGEND**
- = 5/8 INCH IRON BAR FOUND.
 - ⌀ = MAG SPIKE SET.
 - = 5/8 INCH IRON BAR SET.
 - = DENOTES CONCRETE.
 - ▨ = DENOTES LIMITED COMMON AREA.
 - = ALL AREAS AND IMPROVEMENTS NOT LABELED WITH A UNIT DESIGNATION OR AS LIMITED COMMON AREA ARE COMMON AREA.



SURVEYOR'S CERTIFICATE

I DO HEREBY CERTIFY THAT THIS SURVEY OF EAGLES NEST CONDOMINIUMS PHASE VI ACCURATELY REFLECTS THE LOCATION OF IMPROVEMENTS AND RECORDED EASEMENTS.

JAMES W. GEESLIN
PROFESSIONAL SURVEYOR 7764
DATE: OCTOBER 8, 2020



BASIS OF BEARINGS

THE BEARINGS CONTAINED HEREIN ARE BASED ON GPS OBSERVATIONS USING O.D.O.T. CORS NETWORK STATIONS, CONVERTED TO THE OHIO STATE PLANE SOUTH ZONE HORIZONTAL DATUM (NAD83 (2011)).

GEESLIN SURVEYING

525 S. SECOND ST.
COLDWATER, OHIO 43828
Phone : (419) 678-7233
Email : geeslinsurveying@gmail.com