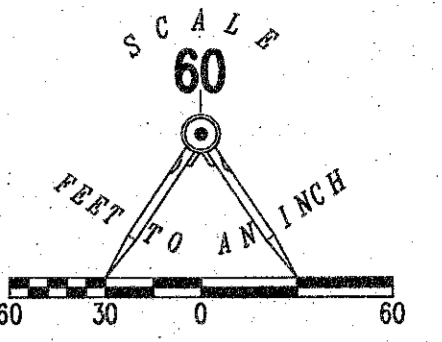


# LUDLOW BRIDGE CONDOMINIUMS - PHASE XXVIII

6.04 ACRE TRACT, 1.00 ACRE TRACT, 8.05 ACRE TRACT OFFICIAL RECORD 710, PAGE 550, TRACTS I, II AND III

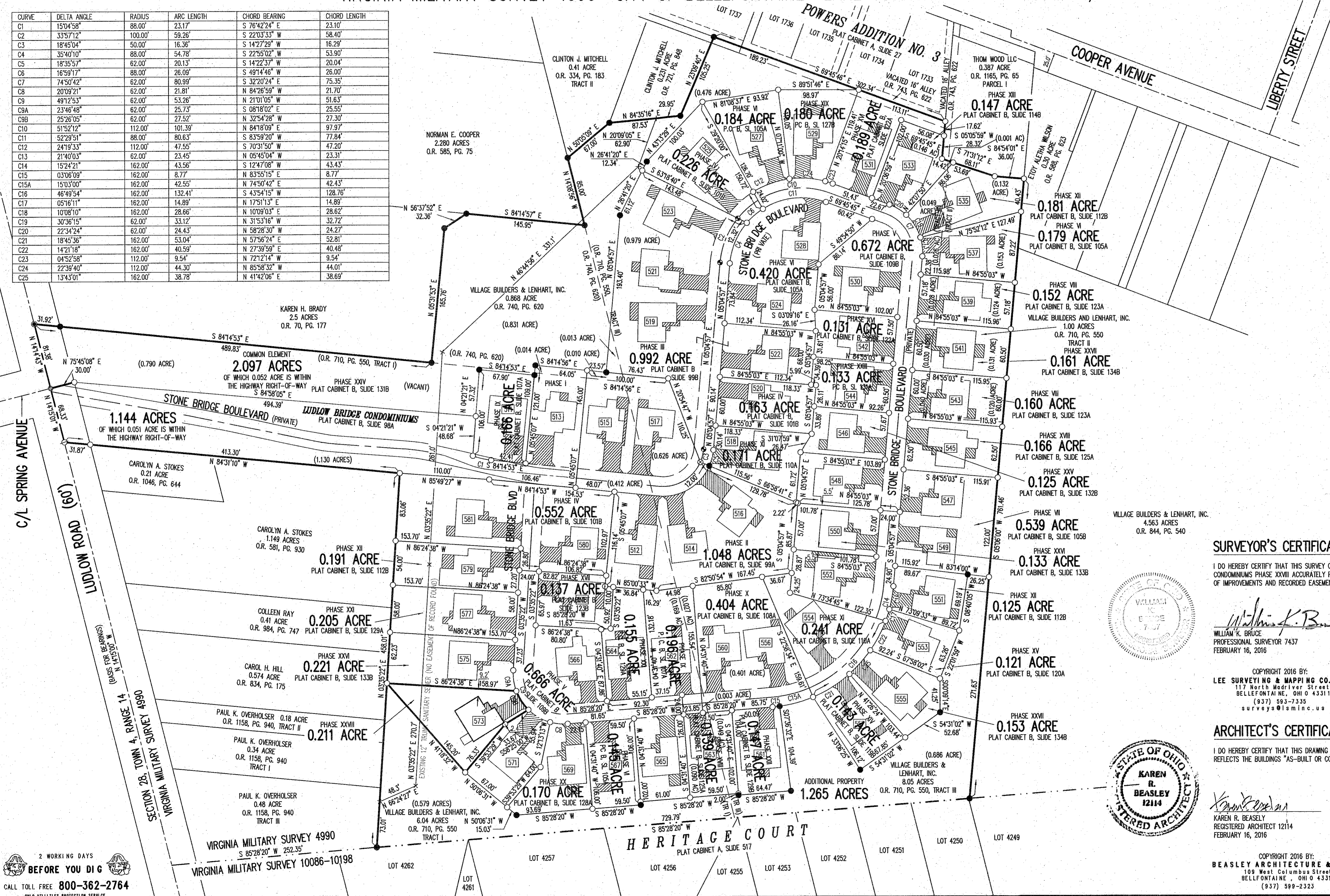
0.868 ACRE TRACT OFFICIAL RECORD 740, PAGE 620

VIRGINIA MILITARY SURVEY 4990 CITY OF BELLEFONTAINE LAKE TOWNSHIP LOGAN COUNTY, OHIO



- LEGEND:
- ⊙ 1-1/4 INCH IRON PIPE FOUND
  - 5/8 INCH IRON ROD SET
  - 5/8 INCH IRON ROD FOUND
  - ⊙ MAG NAIL SET
  - ⊙ MAG NAIL FOUND
  - ⊙ RAILROAD SPIKE SET
  - ⊙ RAILROAD SPIKE FOUND
  - ▨ LIMITED COMMON AREA
  - UNIT NUMBER

CURVE	DELTA ANGLE	RADIUS	ARC LENGTH	CHORD BEARING	CHORD LENGTH
C1	150°45'8"	88.00'	23.17'	S 76°42'24" E	23.10'
C2	335°7'12"	100.00'	59.26'	S 22°03'33" W	58.40'
C3	18°45'04"	50.00'	16.36'	S 14°27'29" W	16.29'
C4	35°40'10"	88.00'	54.78'	S 22°55'02" W	53.90'
C5	18°35'57"	62.00'	20.13'	S 14°22'37" W	20.04'
C6	165°9'17"	88.00'	26.09'	S 8°14'46" W	26.00'
C7	74°50'42"	62.00'	80.99'	S 32°20'24" E	75.35'
C8	20°09'21"	62.00'	21.81'	N 84°26'59" W	21.70'
C9	48°12'53"	62.00'	53.26'	N 21°01'05" W	51.63'
C9A	23°46'49"	62.00'	25.73'	S 08°18'02" E	25.55'
C9B	25°36'05"	62.00'	27.52'	N 32°54'28" E	27.30'
C10	51°52'12"	112.00'	101.39'	N 84°18'09" E	97.97'
C11	51°29'51"	88.00'	80.63'	S 83°59'20" W	77.84'
C12	24°19'33"	112.00'	47.55'	S 70°31'50" W	47.20'
C13	21°40'03"	62.00'	23.45'	N 05°45'04" W	23.31'
C14	15°24'21"	162.00'	43.56'	S 12°47'08" W	43.43'
C15	03°08'09"	162.00'	8.77'	N 83°55'15" E	8.77'
C15A	15°03'00"	162.00'	42.55'	N 74°50'42" E	42.43'
C16	46°49'54"	162.00'	132.41'	S 43°54'15" E	128.76'
C17	05°16'11"	162.00'	14.89'	N 10°09'03" E	14.89'
C18	10°08'10"	162.00'	28.86'	N 17°51'13" E	28.82'
C19	30°36'15"	62.00'	33.12'	N 31°53'16" W	32.72'
C20	22°34'24"	62.00'	24.43'	N 58°28'30" W	24.27'
C21	18°45'36"	162.00'	53.04'	N 57°56'24" E	52.81'
C22	14°21'18"	162.00'	40.59'	N 27°39'59" E	40.46'
C23	04°52'58"	112.00'	9.54'	N 72°12'14" W	9.54'
C24	22°39'40"	112.00'	44.30'	N 85°58'32" W	44.01'
C25	13°43'01"	162.00'	38.78'	N 41°42'06" E	38.69'



- NOTES:
- EASEMENTS IF SHOWN ARE AS PROVIDED BY DEVELOPER. THE SURVEYOR DID NOT SEARCH FOR ADDITIONAL EASEMENTS.
  - THE WORD "CERTIFY" IS INTENDED TO BE AS DEFINED IN OHIO ADMINISTRATIVE CODE 4733-35-04(C).
  - BUILDING HEIGHT FROM PEAK OF ROOF TO GROUND: UNIT 573 IS 25.5'

**SURVEYOR'S CERTIFICATION:**

I DO HEREBY CERTIFY THAT THIS SURVEY OF LUDLOW BRIDGE CONDOMINIUMS PHASE XXVIII ACCURATELY REFLECTS THE LOCATION OF IMPROVEMENTS AND RECORDED EASEMENTS.

*William K. Bruce*  
 WILLIAM K. BRUCE  
 PROFESSIONAL SURVEYOR 7437  
 FEBRUARY 16, 2016

COPYRIGHT 2016 BY:  
 LEE SURVEYING & MAPPING CO., INC.  
 117 North Redfield Street  
 BELLEFONTAINE, OHIO 43311  
 (937) 593-7335  
 surveys@lsm-inc.us

**ARCHITECT'S CERTIFICATION:**

I DO HEREBY CERTIFY THAT THIS DRAWING ACCURATELY REFLECTS THE BUILDINGS "AS-BUILT OR CONSTRUCTED".

*Karen R. Beasley*  
 KAREN R. BEASLEY  
 REGISTERED ARCHITECT 12114  
 FEBRUARY 16, 2016

COPYRIGHT 2016 BY:  
 BEASLEY ARCHITECTURE & DESIGN  
 109 West Columbia Street  
 BELLEFONTAINE, OHIO 43311  
 (937) 599-2323

PRE-APPROVAL *Erin M. Yeats*  
 PLAT CHECKED *Erin M. Yeats*  
 TRANSFERRED THIS 10<sup>th</sup> DAY OF March, 2016  
 AUDITOR, LOGAN COUNTY, OHIO  
 RECORDED IN PLAT CABINET B, SLIDE 135B  
 RECEIVED FOR RECORD AT 1:57 O'CLOCK P.M.  
 THIS 2<sup>nd</sup> DAY OF March, 2016  
*Patricia A. Umser*  
 RECORDER, LOGAN COUNTY, OHIO

2 WORKING DAYS  
 BEFORE YOU DIG  
 CALL TOLL FREE 800-362-2764  
 OHIO UTILITIES PROTECTION SERVICE