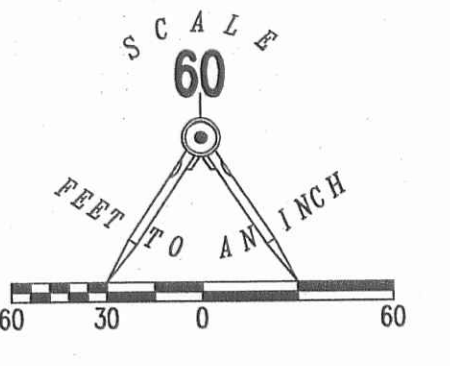


LUDLOW BRIDGE CONDOMINIUMS - PHASE XXVI

6.04 ACRE TRACT, 1.00 ACRE TRACT, 8.05 ACRE TRACT OFFICIAL RECORD 710, PAGE 550, TRACTS I, II AND III

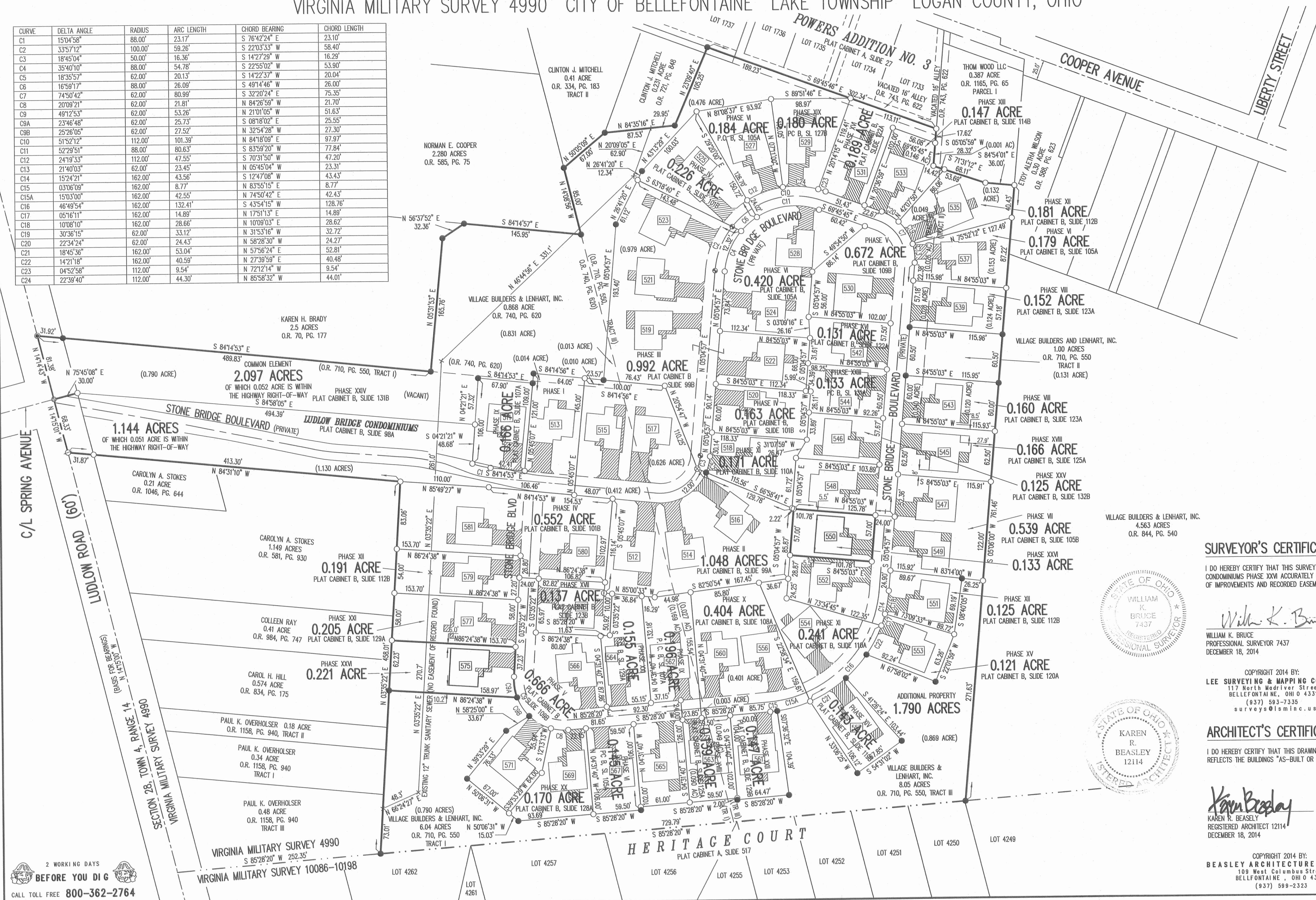
0.868 ACRE TRACT OFFICIAL RECORD 740, PAGE 620

VIRGINIA MILITARY SURVEY 4990 CITY OF BELLEFONTAINE LAKE TOWNSHIP LOGAN COUNTY, OHIO



- LEGEND:
- 1-1/4 INCH IRON PIPE FOUND
 - 5/8 INCH IRON ROD SET
 - 5/8 INCH IRON ROD FOUND
 - MAG NAIL SET
 - MAG NAIL FOUND
 - RAILROAD SPIKE SET
 - RAILROAD SPIKE FOUND
 - ▨ LIMITED COMMON AREA
 - ||| UNIT NUMBER

CURVE	DELTA ANGLE	RADIUS	ARC LENGTH	CHORD BEARING	CHORD LENGTH
C1	150°4'58"	88.00'	23.17'	S 76°42'24" E	23.10'
C2	33°57'12"	100.00'	59.26'	S 22°03'33" W	58.40'
C3	18°45'04"	50.00'	16.36'	S 14°27'29" W	16.29'
C4	35°40'10"	88.00'	54.78'	S 22°55'02" W	53.90'
C5	18°35'57"	62.00'	20.13'	S 14°22'37" W	20.04'
C6	16°59'17"	88.00'	80.99'	S 32°20'24" E	75.35'
C7	74°50'42"	62.00'	21.81'	N 84°26'59" W	21.70'
C8	20°09'21"	62.00'	21.81'	N 21°01'05" W	51.63'
C9	49°12'53"	62.00'	53.26'	S 08°18'02" E	25.55'
C9A	23°46'48"	62.00'	25.73'	N 32°54'28" W	27.30'
C9B	25°26'05"	62.00'	101.39'	N 84°18'09" E	97.97'
C10	51°52'12"	112.00'	101.39'	S 83°59'20" W	77.84'
C11	52°29'51"	88.00'	80.63'	S 70°31'50" W	47.20'
C12	24°19'33"	112.00'	47.55'	N 05°45'04" W	23.31'
C13	21°40'03"	62.00'	23.45'	S 12°47'08" W	43.43'
C14	15°24'21"	162.00'	43.56'	N 83°55'15" E	8.77'
C15	03°06'09"	162.00'	8.77'	N 74°50'42" E	42.43'
C15A	15°03'00"	162.00'	42.55'	S 43°54'15" W	128.76'
C16	46°49'54"	162.00'	132.41'	N 17°51'13" E	14.89'
C17	05°16'11"	162.00'	14.89'	N 10°09'03" E	28.62'
C18	10°08'10"	62.00'	28.62'	N 31°53'16" W	32.72'
C19	30°36'15"	62.00'	33.12'	N 58°28'30" W	24.27'
C20	22°34'24"	62.00'	24.43'	N 57°56'24" E	52.81'
C21	18°45'36"	162.00'	53.04'	N 27°39'59" E	40.48'
C22	14°21'18"	162.00'	9.54'	N 72°12'14" W	9.54'
C23	04°52'58"	112.00'	9.54'	N 85°58'32" W	44.01'
C24	22°39'40"	112.00'	44.30'		



- NOTES:
- EASEMENTS IF SHOWN ARE AS PROVIDED BY DEVELOPER. THE SURVEYOR DID NOT SEARCH FOR ADDITIONAL EASEMENTS.
 - THE WORD "CERTIFY" IS INTENDED TO BE AS DEFINED IN OHIO ADMINISTRATIVE CODE 4733-35-04(C).
 - BUILDING HEIGHT FROM PEAK OF ROOF TO GROUND:
UNIT 550 IS 22.95'
UNIT 575 IS 23.80'

SURVEYOR'S CERTIFICATION:

I DO HEREBY CERTIFY THAT THIS SURVEY OF LUDLOW BRIDGE CONDOMINIUMS PHASE XXVI ACCURATELY REFLECTS THE LOCATION OF IMPROVEMENTS AND RECORDED EASEMENTS.

WILLIAM K. BRUCE
PROFESSIONAL SURVEYOR 7437
DECEMBER 18, 2014

COPYRIGHT 2014 BY:
LEE SURVEYING & MAPPING CO., INC.
117 North Madriver Street
BELLEFONTAINE, OHIO 43311
(937) 593-7335
surveys@lsmcinc.us

ARCHITECT'S CERTIFICATION:

I DO HEREBY CERTIFY THAT THIS DRAWING ACCURATELY REFLECTS THE BUILDINGS "AS-BUILT OR CONSTRUCTED".

KAREN R. BEASLEY
REGISTERED ARCHITECT 12114
DECEMBER 18, 2014

COPYRIGHT 2014 BY:
BEASLEY ARCHITECTURE & DESIGN
109 West Columbus Street
BELLEFONTAINE, OHIO 43311
(937) 599-2323

PRE-APPROVAL *Ernie M. Hearty 1-28-15*
 PLAT CHECKED *Ernie M. Hearty 1-28-15*
 TRANSFERRED THIS *20th* DAY OF *January*, 2015
 AUDITOR, LOGAN COUNTY, OHIO
 RECORDED IN PLAT CABINET *B*, SLIDE *133B*
 RECEIVED FOR RECORD AT *9:23:27* O'CLOCK *A.M.*
 THIS *28th* DAY OF *January*, 2015
 RECORDER, LOGAN COUNTY, OHIO

2 WORKING DAYS
BEFORE YOU DIG
CALL TOLL FREE 800-362-2764
OHIO UTILITIES PROTECTS OUR SERVICE.