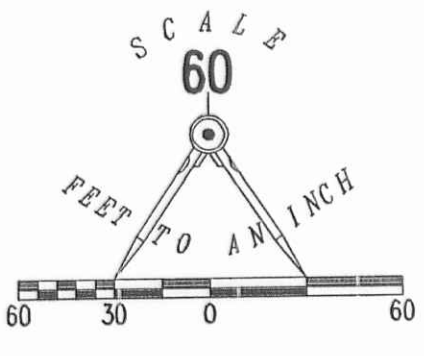


LUDLOW BRIDGE CONDOMINIUMS - PHASE XXIV

6.04 ACRE TRACT, 1.00 ACRE TRACT, 8.05 ACRE TRACT OFFICIAL RECORD 710, PAGE 550, TRACTS I, II AND III

0.868 ACRE TRACT OFFICIAL RECORD 740, PAGE 620

VIRGINIA MILITARY SURVEY 4990 CITY OF BELLEFONTAINE LAKE TOWNSHIP LOGAN COUNTY, OHIO

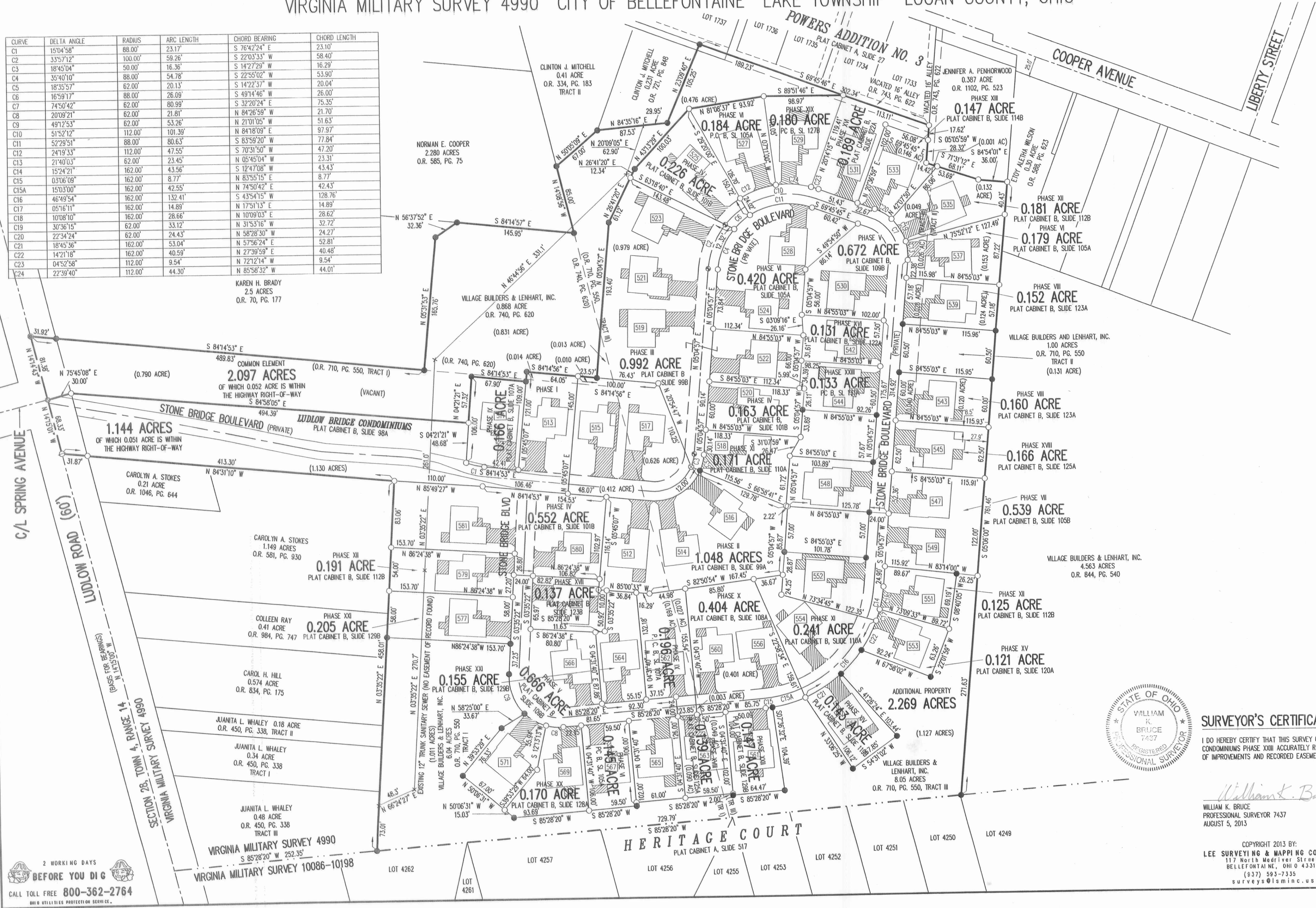


LEGEND:

- 1-1/4 INCH IRON PIPE FOUND
- 5/8 INCH IRON ROD SET
- 5/8 INCH IRON ROD FOUND
- MAG NAIL SET
- MAG NAIL FOUND
- RAILROAD SPIKE SET
- RAILROAD SPIKE FOUND
- ▨ LIMITED COMMON AREA
- [] UNIT NUMBER

CURVE	DELTA ANGLE	RADIUS	ARC LENGTH	CHORD BEARING	CHORD LENGTH
C1	15°04'58"	88.00'	23.17'	S 76°42'24" E	23.10'
C2	33°57'12"	100.00'	59.26'	S 22°03'33" W	58.40'
C3	18°45'04"	50.00'	16.36'	S 14°27'29" W	16.29'
C4	35°40'10"	88.00'	54.78'	S 22°55'02" W	53.90'
C5	18°35'57"	62.00'	20.13'	S 14°22'37" W	20.04'
C6	16°59'17"	88.00'	26.09'	S 49°14'46" E	26.00'
C7	74°50'42"	62.00'	80.99'	S 32°20'24" E	75.35'
C8	20°09'21"	62.00'	21.81'	N 84°26'59" W	21.70'
C9	49°12'53"	62.00'	53.26'	N 21°01'05" W	51.63'
C10	51°52'12"	112.00'	101.39'	N 84°18'09" E	97.97'
C11	52°29'51"	88.00'	80.63'	S 83°59'20" W	77.84'
C12	24°19'33"	112.00'	47.55'	S 70°31'50" W	47.20'
C13	21°40'03"	62.00'	23.45'	N 05°45'04" W	23.31'
C14	15°24'21"	162.00'	43.56'	S 12°47'08" W	43.43'
C15	03°06'09"	162.00'	8.77'	N 83°55'15" E	8.77'
C15A	15°03'00"	162.00'	42.55'	N 74°50'42" E	42.43'
C16	46°49'54"	162.00'	132.41'	S 43°54'15" E	128.76'
C17	05°16'11"	162.00'	14.89'	N 17°51'13" E	14.89'
C18	10°08'10"	162.00'	28.66'	N 10°09'03" E	28.62'
C19	30°36'15"	62.00'	33.12'	N 31°53'16" W	32.72'
C20	22°34'24"	62.00'	24.43'	N 58°28'30" W	24.27'
C21	18°45'36"	162.00'	53.04'	N 57°56'24" E	52.81'
C22	14°21'18"	162.00'	40.59'	N 27°39'59" E	40.48'
C23	04°52'58"	112.00'	9.54'	N 72°12'14" W	9.54'
C24	22°39'40"	112.00'	44.30'	N 85°58'32" W	44.01'

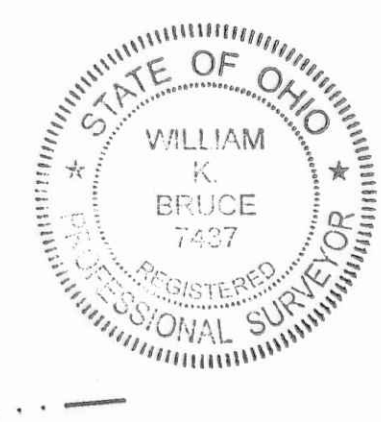
KAREN H. BRADY
2.5 ACRES
O.R. 70, PG. 177



NOTES:

1. EASEMENTS IF SHOWN ARE AS PROVIDED BY DEVELOPER. THE SURVEYOR DID NOT SEARCH FOR ADDITIONAL EASEMENTS.
2. THE WORD "CERTIFY" IS INTENDED TO BE AS DEFINED IN OHIO ADMINISTRATIVE CODE 4733-35-04(C).

STATE OF OHIO
Patricia A. Myers
Logan County Recorder
PLAT 201307072 PLAT B/13118
RECORDED
10/17/2013 10:48:35 AM
RECORDING FEES: \$55.40
LEE SURVEYING & MAPPING CO. INC.
117 North Madison Street
Bellefontaine, OH 43111
(937) 593-7335
surveys@lsmcinc.us



SURVEYOR'S CERTIFICATION:

I DO HEREBY CERTIFY THAT THIS SURVEY OF LUDLOW BRIDGE CONDOMINIUMS PHASE XXIV ACCURATELY REFLECTS THE LOCATION OF IMPROVEMENTS AND RECORDED EASEMENTS.

WILLIAM K. BRUCE
PROFESSIONAL SURVEYOR 7427
AUGUST 5, 2013

PRE-APPROVAL *Erin M. Yost*
PLAT CHECKED *Erin M. Yost 10-17-13*
TRANSFERRED THIS 17th DAY OF October, 2013
AUDITOR, LOGAN COUNTY, OHIO
RECORDED IN PLAT CABINET B, SLIDE 131B
RECEIVED FOR RECORD AT 10:48 O'CLOCK A.M.
THIS 17th DAY OF October, 2013
RECORDER, LOGAN COUNTY, OHIO *Patricia A. Myers*

2 WORKING DAYS
BEFORE YOU DIG
CALL TOLL FREE 800-362-2764
OHIO WILDLIFE PROTECTION SERVICE