

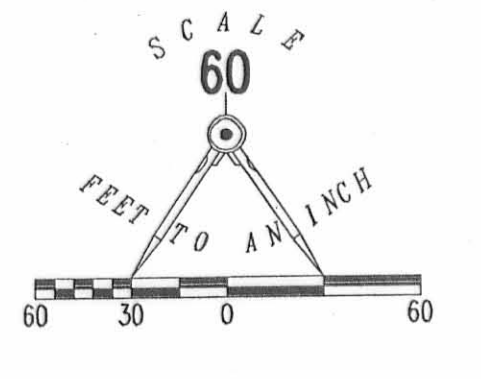
EXHIBIT B TO DECLARATION AND BYLAWS OF

LUDLOW BRIDGE CONDOMINIUMS - PHASE XV

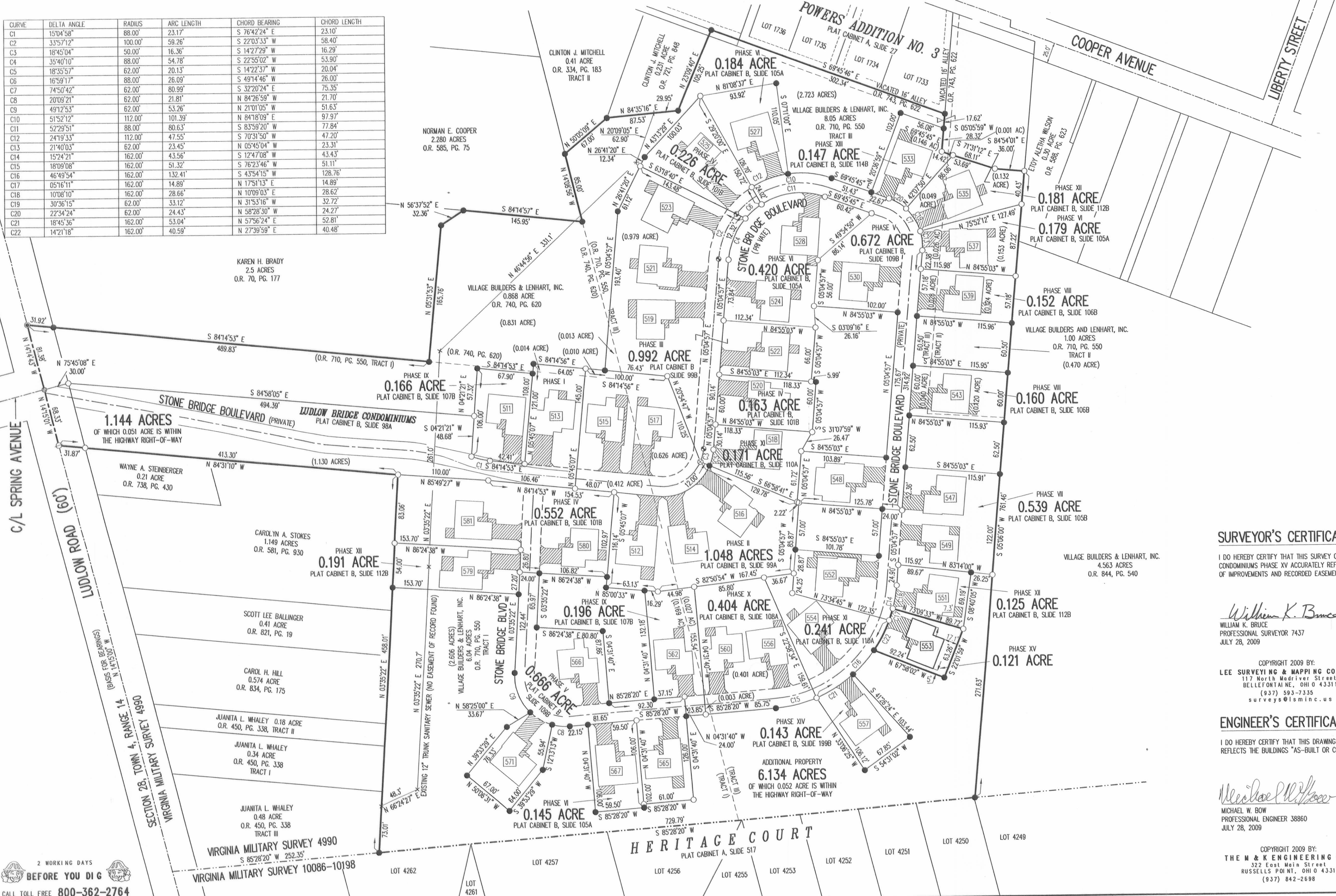
6.04 ACRE TRACT, 1.00 ACRE TRACT, 8.05 ACRE TRACT OFFICIAL RECORD 710, PAGE 550, TRACTS I, II AND III

0.868 ACRE TRACT OFFICIAL RECORD 740, PAGE 620

VIRGINIA MILITARY SURVEY 4990 CITY OF BELLEFONTAINE LAKE TOWNSHIP LOGAN COUNTY, OHIO



CURVE	DELTA ANGLE	RADIUS	ARC LENGTH	CHORD BEARING	CHORD LENGTH
C1	150°45'8"	88.00'	23.17'	S 76°42'24" E	23.10'
C2	33°57'12"	100.00'	59.26'	S 22°03'33" W	58.40'
C3	18°45'04"	50.00'	16.36'	S 14°27'29" W	16.29'
C4	35°40'10"	88.00'	54.78'	S 22°55'02" W	53.90'
C5	18°35'57"	62.00'	20.13'	S 14°22'37" W	20.04'
C6	16°59'17"	88.00'	26.09'	S 49°14'46" E	26.00'
C7	74°50'42"	62.00'	80.99'	S 32°20'24" E	75.35'
C8	20°09'21"	62.00'	21.81'	N 84°26'59" W	21.70'
C9	49°12'53"	62.00'	53.26'	N 21°01'05" W	51.63'
C10	52°29'51"	88.00'	101.39'	S 83°59'20" W	77.84'
C11	24°19'33"	112.00'	47.55'	S 70°31'50" W	47.20'
C12	21°40'03"	62.00'	23.45'	N 05°45'04" W	23.31'
C13	15°24'21"	162.00'	43.56'	S 12°47'08" W	43.43'
C14	18°09'08"	162.00'	51.32'	S 43°54'15" W	51.11'
C15	05°16'11"	162.00'	132.41'	N 17°51'13" E	128.76'
C16	10°08'10"	162.00'	28.66'	N 10°09'03" E	14.89'
C17	30°36'15"	62.00'	33.12'	N 31°53'16" W	28.62'
C18	22°34'24"	62.00'	24.43'	N 58°28'30" W	24.27'
C19	18°45'36"	162.00'	53.04'	N 57°56'24" E	52.81'
C20	14°21'18"	162.00'	40.59'	N 27°39'59" E	40.48'



- LEGEND:
- ⊙ 1-1/4 INCH IRON PIPE FOUND
 - 5/8 INCH IRON ROD SET
 - 5/8 INCH IRON ROD FOUND
 - ⊙ MAG NAIL SET
 - ⊙ MAG NAIL FOUND
 - ⊙ RAILROAD SPIKE SET
 - ⊙ RAILROAD SPIKE FOUND
 - ⊙ LIMITED COMMON AREA
 - ⊙ UNIT NUMBER

- NOTES:
- EASEMENTS IF SHOWN ARE AS PROVIDED BY DEVELOPER. THE SURVEYOR DID NOT SEARCH FOR ADDITIONAL EASEMENTS.
 - THE WORD "CERTIFY" IS INTENDED TO BE AS DEFINED IN OHIO ADMINISTRATIVE CODE 4733-35-04(C).
 - BUILDING HEIGHT FROM PEAK OF ROOF TO GROUND: UNIT 553 IS 21.2'

SURVEYOR'S CERTIFICATION:

I DO HEREBY CERTIFY THAT THIS SURVEY OF LUDLOW BRIDGE CONDOMINIUMS PHASE XV ACCURATELY REFLECTS THE LOCATION OF IMPROVEMENTS AND RECORDED EASEMENTS.

William K. Bruce
 WILLIAM K. BRUCE
 PROFESSIONAL SURVEYOR 7437
 JULY 26, 2009

COPYRIGHT 2009 BY:
 LEE SURVEYING & MAPPING CO., INC.
 117 North Madriver Street
 BELLEFONTAINE, OHIO 43311
 (937) 593-7335
 surveys@lsmcinc.us

ENGINEER'S CERTIFICATION:

I DO HEREBY CERTIFY THAT THIS DRAWING ACCURATELY REFLECTS THE BUILDINGS "AS-BUILT OR CONSTRUCTED".

Michael W. Bow
 MICHAEL W. BOW
 PROFESSIONAL ENGINEER 38860
 JULY 28, 2009

COPYRIGHT 2009 BY:
 THE M & K ENGINEERING CO.
 372 East Main Street
 RUSSELLS POINT, OHIO 43311
 (937) 842-2698

PRE-APPROVAL *Jan C. Ho* 8-14-09

PLAT CHECKED *Jan C. Ho* 8-14-09

TRANSFERRED THIS 14th DAY OF August, 2009

AUDITOR, LOGAN COUNTY, OHIO *Michael E. Guder*

RECORDED IN PLAT CABINET B, SLIDE 120A

RECEIVED FOR RECORD AT 9:57 O'CLOCK A.M.

THIS 14th DAY OF August, 2009

Linda Hanson
 RECORDER, LOGAN COUNTY, OHIO

2 WORKING DAYS BEFORE YOU DIG
 CALL TOLL FREE 800-362-2764
 OHIO UTILITIES PROTECTION SERVICE