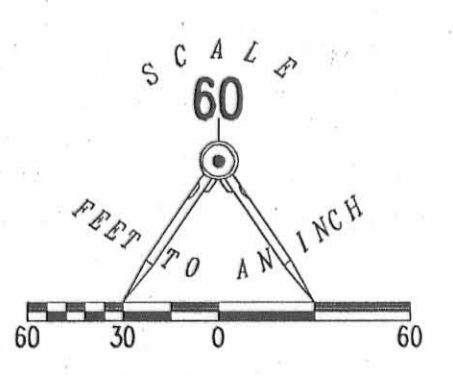


EXHIBIT B TO DECLARATION AND BYLAWS OF LUDLOW BRIDGE CONDOMINIUMS - PHASE XIII

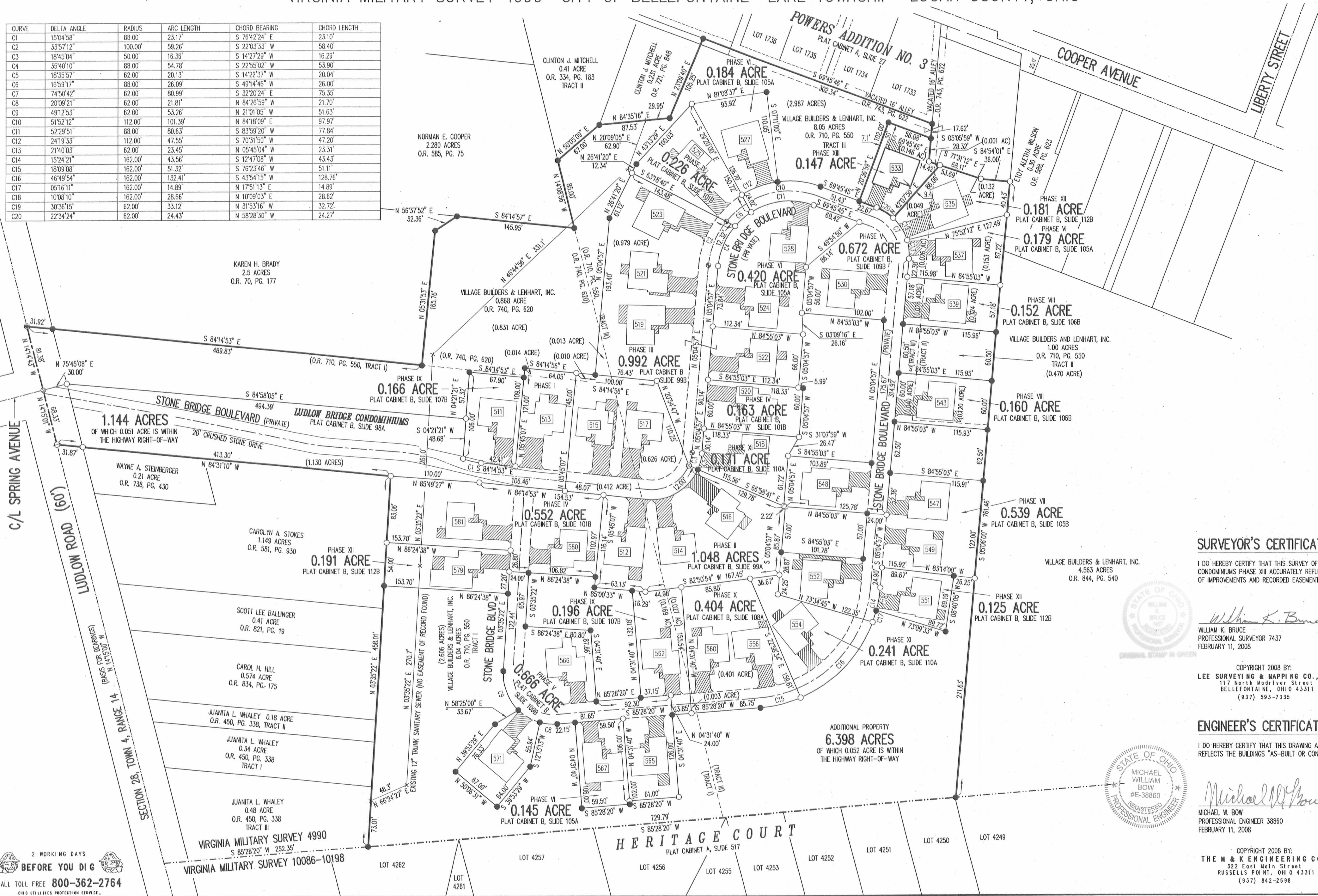
6.04 ACRE TRACT, 1.00 ACRE TRACT, 8.05 ACRE TRACT OFFICIAL RECORD 710, PAGE 550, TRACTS I, II AND III

0.868 ACRE TRACT OFFICIAL RECORD 740, PAGE 620

VIRGINIA MILITARY SURVEY 4990 CITY OF BELLEFONTAINE LAKE TOWNSHIP LOGAN COUNTY, OHIO



CURVE	DELTA ANGLE	RADIUS	ARC LENGTH	CHORD BEARING	CHORD LENGTH
C1	15°04'58"	88.00'	23.17'	S 76°42'24" E	23.10'
C2	33°57'12"	100.00'	59.26'	S 22°03'33" W	58.40'
C3	18°45'04"	50.00'	16.36'	S 14°27'29" W	16.29'
C4	35°40'10"	88.00'	54.78'	S 22°55'02" W	53.90'
C5	18°35'57"	62.00'	20.13'	S 14°27'37" W	20.04'
C6	16°59'17"	88.00'	26.09'	S 49°14'46" W	26.00'
C7	74°50'42"	62.00'	80.99'	S 32°20'24" E	75.35'
C8	20°09'21"	62.00'	21.81'	N 84°26'59" W	21.70'
C9	49°12'53"	62.00'	53.26'	N 21°01'05" W	51.63'
C10	51°52'12"	112.00'	101.39'	N 84°18'09" E	97.97'
C11	52°29'51"	88.00'	80.63'	S 83°58'20" W	77.84'
C12	24°19'33"	112.00'	47.55'	S 70°31'50" W	47.20'
C13	21°40'03"	62.00'	23.45'	N 05°45'04" W	23.31'
C14	15°24'21"	162.00'	43.56'	S 12°47'08" W	43.43'
C15	18°09'08"	162.00'	51.32'	S 76°23'46" W	51.11'
C16	46°49'54"	162.00'	132.41'	S 43°54'15" W	128.76'
C17	05°16'11"	162.00'	14.89'	N 17°51'13" E	14.89'
C18	10°08'10"	162.00'	28.66'	N 10°09'03" E	28.62'
C19	30°36'15"	62.00'	33.12'	N 31°53'16" W	32.72'
C20	22°34'24"	62.00'	24.43'	N 58°28'30" W	24.27'



- LEGEND:
- 1-1/4 INCH IRON PIPE FOUND
 - 5/8 INCH IRON ROD SET
 - 5/8 INCH IRON ROD FOUND
 - MAG NAIL SET
 - MAG NAIL FOUND
 - RAILROAD SPIKE SET
 - RAILROAD SPIKE FOUND
 - ▨ LIMITED COMMON AREA
 - UNIT NUMBER

- NOTES:
- EASEMENTS IF SHOWN ARE AS PROVIDED BY DEVELOPER. THE SURVEYOR DID NOT SEARCH FOR ADDITIONAL EASEMENTS.
 - THE WORD "CERTIFY" IS INTENDED TO BE AS DEFINED IN OHIO ADMINISTRATIVE CODE 4733-35-04(C).
 - BUILDING HEIGHT FROM PEAK OF ROOF TO GROUND: UNIT 533 IS 20.8'

SURVEYOR'S CERTIFICATION:

I DO HEREBY CERTIFY THAT THIS SURVEY OF LUDLOW BRIDGE CONDOMINIUMS PHASE XIII ACCURATELY REFLECTS THE LOCATION OF IMPROVEMENTS AND RECORDED EASEMENTS.

William K. Bruce
WILLIAM K. BRUCE
PROFESSIONAL SURVEYOR 7437
FEBRUARY 11, 2008

COPYRIGHT 2008 BY:
LEE SURVEYING & MAPPING CO., INC.
117 North Mediflex Street
BELLEFONTAINE, OHIO 43311
(937) 593-7355

ENGINEER'S CERTIFICATION:

I DO HEREBY CERTIFY THAT THIS DRAWING ACCURATELY REFLECTS THE BUILDINGS "AS-BUILT OR CONSTRUCTED".

Michael W. Bow
MICHAEL W. BOW
PROFESSIONAL ENGINEER 38860
FEBRUARY 11, 2008

COPYRIGHT 2008 BY:
THE W & K ENGINEERING CO.
322 East Main Street
RUSSELLS POINT, OHIO 43311
(937) 842-2698

PRE-APPROVAL *Jon C. Hill* 2-29-08
PLAT CHECKED *Jon C. Hill* 2-29-08
TRANSFERRED THIS 29th DAY OF February, 2008
AUDITOR, LOGAN COUNTY, OHIO
RECORDED IN PLAT CABINET B, SLIDE 114B
RECEIVED FOR RECORD AT 10:55 O'CLOCK A.M.
THIS 29th DAY OF February, 2008
RECORDER, LOGAN COUNTY, OHIO

2 WORKING DAYS
BEFORE YOU DIG
CALL TOLL FREE 800-362-2764
OHIO UTILITIES PROTECTION SERVICE