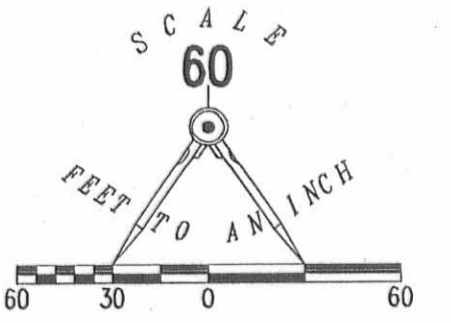


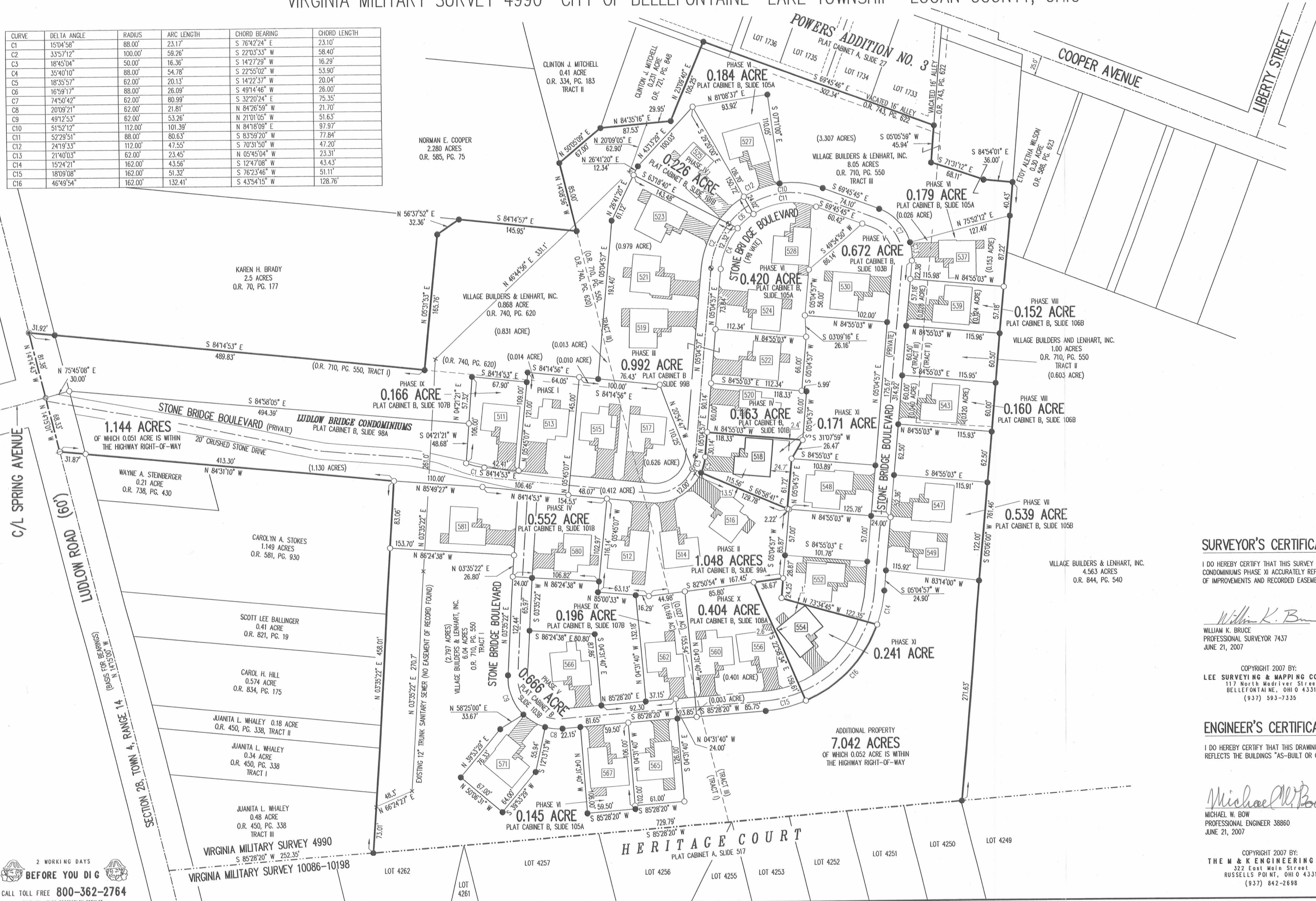
# LUDLOW BRIDGE CONDOMINIUMS - PHASE XI

EXHIBIT B TO DECLARATION AND BYLAWS OF  
 6.04 ACRE TRACT, 1.00 ACRE TRACT, 8.05 ACRE TRACT OFFICIAL RECORD 710, PAGE 550, TRACTS I, II AND III  
 0.868 ACRE TRACT OFFICIAL RECORD 740, PAGE 620  
 VIRGINIA MILITARY SURVEY 4990 CITY OF BELLEFONTAINE LAKE TOWNSHIP LOGAN COUNTY, OHIO



- LEGEND:
- 1-1/4 INCH IRON PIPE FOUND
  - 5/8 INCH IRON ROD SET
  - 5/8 INCH IRON ROD FOUND
  - MAG NAIL SET
  - MAG NAIL FOUND
  - RAILROAD SPIKE SET
  - RAILROAD SPIKE FOUND
  - ▨ LIMITED COMMON AREA
  - UNIT NUMBER

CURVE	DELTA ANGLE	RADIUS	ARC LENGTH	CHORD BEARING	CHORD LENGTH
C1	15°04'58"	88.00'	23.17'	S 76°42'24" E	23.10'
C2	33°57'12"	100.00'	58.26'	S 22°03'33" W	58.40'
C3	18°45'04"	50.00'	16.36'	S 14°27'29" W	16.29'
C4	35°40'10"	88.00'	54.78'	S 22°55'02" W	53.90'
C5	18°35'57"	62.00'	20.13'	S 14°27'37" W	20.04'
C6	16°59'17"	88.00'	26.09'	S 49°14'46" W	26.00'
C7	74°50'42"	62.00'	80.99'	S 32°20'24" E	75.35'
C8	20°09'21"	112.00'	101.39'	N 84°26'59" W	21.70'
C9	49°12'53"	62.00'	53.26'	N 21°01'05" E	51.63'
C10	51°52'12"	112.00'	101.39'	N 84°18'09" E	97.97'
C11	52°29'51"	88.00'	80.63'	S 83°59'20" W	77.84'
C12	24°19'33"	112.00'	47.55'	S 70°31'50" W	47.20'
C13	21°40'03"	62.00'	23.45'	N 05°45'04" W	23.31'
C14	15°24'21"	162.00'	43.56'	S 12°47'06" W	43.43'
C15	18°09'08"	162.00'	51.32'	S 76°23'46" W	51.11'
C16	46°49'54"	162.00'	132.41'	S 43°54'15" W	128.76'



- NOTES:
- EASEMENTS IF SHOWN ARE AS PROVIDED BY DEVELOPER. THE SURVEYOR DID NOT SEARCH FOR ADDITIONAL EASEMENTS.
  - THE WORD "CERTIFY" IS INTENDED TO BE AS DEFINED IN OHIO ADMINISTRATIVE CODE 4733-35-04(C).
  - BUILDING HEIGHT FROM PEAK OF ROOF TO GROUND:  
 UNIT 518 IS 20.0'  
 UNIT 554 IS 20.1'

**SURVEYOR'S CERTIFICATION:**

I DO HEREBY CERTIFY THAT THIS SURVEY OF LUDLOW BRIDGE CONDOMINIUMS PHASE XI ACCURATELY REFLECTS THE LOCATION OF IMPROVEMENTS AND RECORDED EASEMENTS.

*William K. Bruce*  
 WILLIAM K. BRUCE  
 PROFESSIONAL SURVEYOR 7437  
 JUNE 21, 2007

COPYRIGHT 2007 BY:  
 LEE SURVEYING & MAPPING CO., INC.  
 117 North Medivler Street  
 BELLEFONTAINE, OHIO 43311  
 (937) 593-7335

**ENGINEER'S CERTIFICATION:**

I DO HEREBY CERTIFY THAT THIS DRAWING ACCURATELY REFLECTS THE BUILDINGS "AS-BUILT OR CONSTRUCTED".

*Michael W. Bow*  
 MICHAEL W. BOW  
 PROFESSIONAL ENGINEER 38860  
 JUNE 21, 2007

COPYRIGHT 2007 BY:  
 THE M & K ENGINEERING CO.  
 322 East Main Street  
 RUSSELLS POINT, OHIO 43311  
 (937) 842-2698

PRE-APPROVAL *J.C.H.* 8-15-07  
 PLAT CHECKED *J.C.H.* 8-15-07  
 TRANSFERRED THIS 15<sup>th</sup> DAY OF August, 2007  
 AUDITOR, LOGAN COUNTY, OHIO  
 RECORDED IN PLAT CABINET B, SLIDE 110A  
 RECEIVED FOR RECORD AT 3:29 O'CLOCK P.M.  
 THIS 15<sup>th</sup> DAY OF August, 2007  
*Linda Hanson*  
 RECORDER, LOGAN COUNTY, OHIO

2 WORKING DAYS  
**BEFORE YOU DIG**  
 CALL TOLL FREE 800-362-2764  
 OHIO PROFESSIONAL SURVEYORS

20070619H