

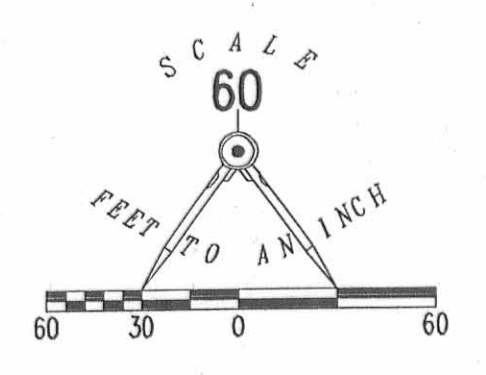
EXHIBIT B TO DECLARATION AND BYLAWS OF

LUDLOW BRIDGE CONDOMINIUMS - PHASE V

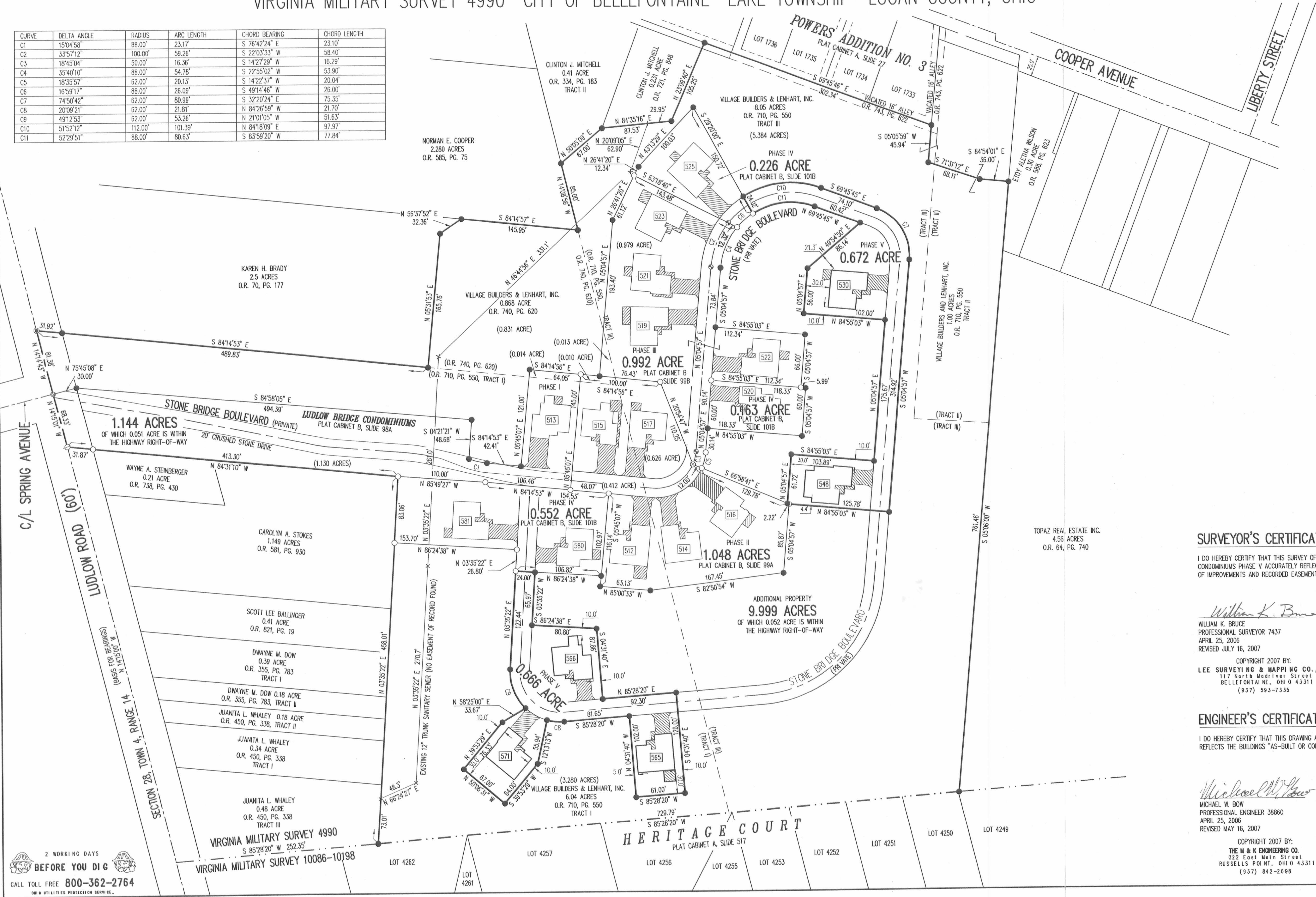
6.04 ACRE TRACT, 1.00 ACRE TRACT, 8.05 ACRE TRACT OFFICIAL RECORD 710, PAGE 550, TRACTS I, II AND III

0.868 ACRE TRACT OFFICIAL RECORD 740, PAGE 620

VIRGINIA MILITARY SURVEY 4990 CITY OF BELLEFONTAINE LAKE TOWNSHIP LOGAN COUNTY, OHIO



CURVE	DELTA ANGLE	RADIUS	ARC LENGTH	CHORD BEARING	CHORD LENGTH
C1	15°04'58"	88.00'	23.17'	S 76°42'24" E	23.10'
C2	33°57'12"	100.00'	59.26'	S 22°03'33" W	58.40'
C3	18°45'04"	50.00'	16.36'	S 14°27'29" W	16.29'
C4	35°40'10"	88.00'	54.78'	S 22°55'02" W	53.90'
C5	18°35'57"	62.00'	20.13'	S 14°22'37" W	20.04'
C6	16°59'17"	88.00'	26.09'	S 49°14'46" W	26.00'
C7	74°50'42"	80.99'	80.99'	S 32°20'24" E	75.35'
C8	20°09'21"	62.00'	21.81'	N 84°26'59" W	21.70'
C9	49°12'53"	62.00'	53.26'	N 21°01'05" W	51.63'
C10	51°52'12"	112.00'	101.39'	N 84°18'09" E	97.97'
C11	52°29'51"	88.00'	80.63'	S 83°59'20" W	77.84'



- LEGEND:
- 1-1/4 INCH IRON PIPE FOUND
 - 5/8 INCH IRON ROD SET
 - 5/8 INCH IRON ROD FOUND
 - MAG NAIL SET
 - MAG NAIL FOUND
 - RAILROAD SPIKE SET
 - RAILROAD SPIKE FOUND
 - ▨ LIMITED COMMON AREA
 - UNIT NUMBER

- NOTES:
1. EASEMENTS IF SHOWN ARE AS PROVIDED BY DEVELOPER. THE SURVEYOR DID NOT SEARCH FOR ADDITIONAL EASEMENTS.
 2. THE WORD "CERTIFY" IS INTENDED TO BE AS DEFINED IN OHIO ADMINISTRATIVE CODE 4733-35-04(C).
 3. BUILDING HEIGHT FROM PEAK OF ROOF TO GROUND:
 UNIT 530 IS 23.9'
 UNIT 548 IS 21.0'
 UNIT 565 IS 19.8'
 UNIT 566 IS 21.1'
 UNIT 571 IS 19.5'

SURVEYOR'S CERTIFICATION:

I DO HEREBY CERTIFY THAT THIS SURVEY OF LUDLOW BRIDGE CONDOMINIUMS PHASE V ACCURATELY REFLECTS THE LOCATION OF IMPROVEMENTS AND RECORDED EASEMENTS.

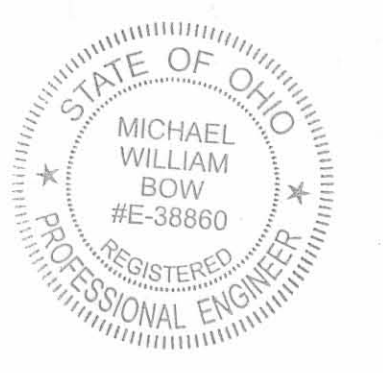
William K. Bruce
WILLIAM K. BRUCE
PROFESSIONAL SURVEYOR 7437
APRIL 25, 2006
REVISED JULY 16, 2007



ENGINEER'S CERTIFICATION:

I DO HEREBY CERTIFY THAT THIS DRAWING ACCURATELY REFLECTS THE BUILDINGS "AS-BUILT OR CONSTRUCTED".

Michael W. Bow
MICHAEL W. BOW
PROFESSIONAL ENGINEER 38860
APRIL 25, 2006
REVISED MAY 16, 2007



COPYRIGHT 2007 BY:
THE M & K ENGINEERING CO.
322 East Main Street
RUSSELLS POINT, OHIO 43311
(937) 842-2698

PRE-APPROVAL *J.C.H.* 8-6-07
 PLAT CHECKED *J.C.H.* 8-6-07
 TRANSFERRED THIS 6th DAY OF August, 2007
 AUDITOR, LOGAN COUNTY, OHIO
 RECORDED IN PLAT CABINET B, SLIDE 109B
 RECEIVED FOR RECORD AT 1:32:58 O'CLOCK P.M.
 THIS 6th DAY OF August, 2007
 RECORDER, LOGAN COUNTY, OHIO
Linda Hanson

2 WORKING DAYS BEFORE YOU DIG
CALL TOLL FREE 800-362-2764

2007005930