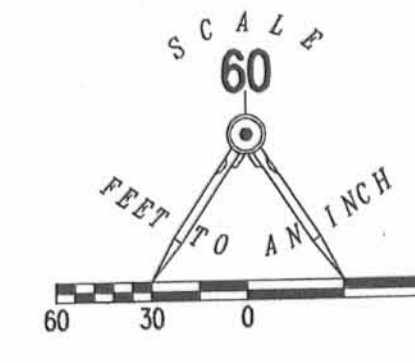


# EXHIBIT B TO DECLARATION AND BYLAWS OF LUDLOW BRIDGE CONDOMINIUMS - PHASE VIII

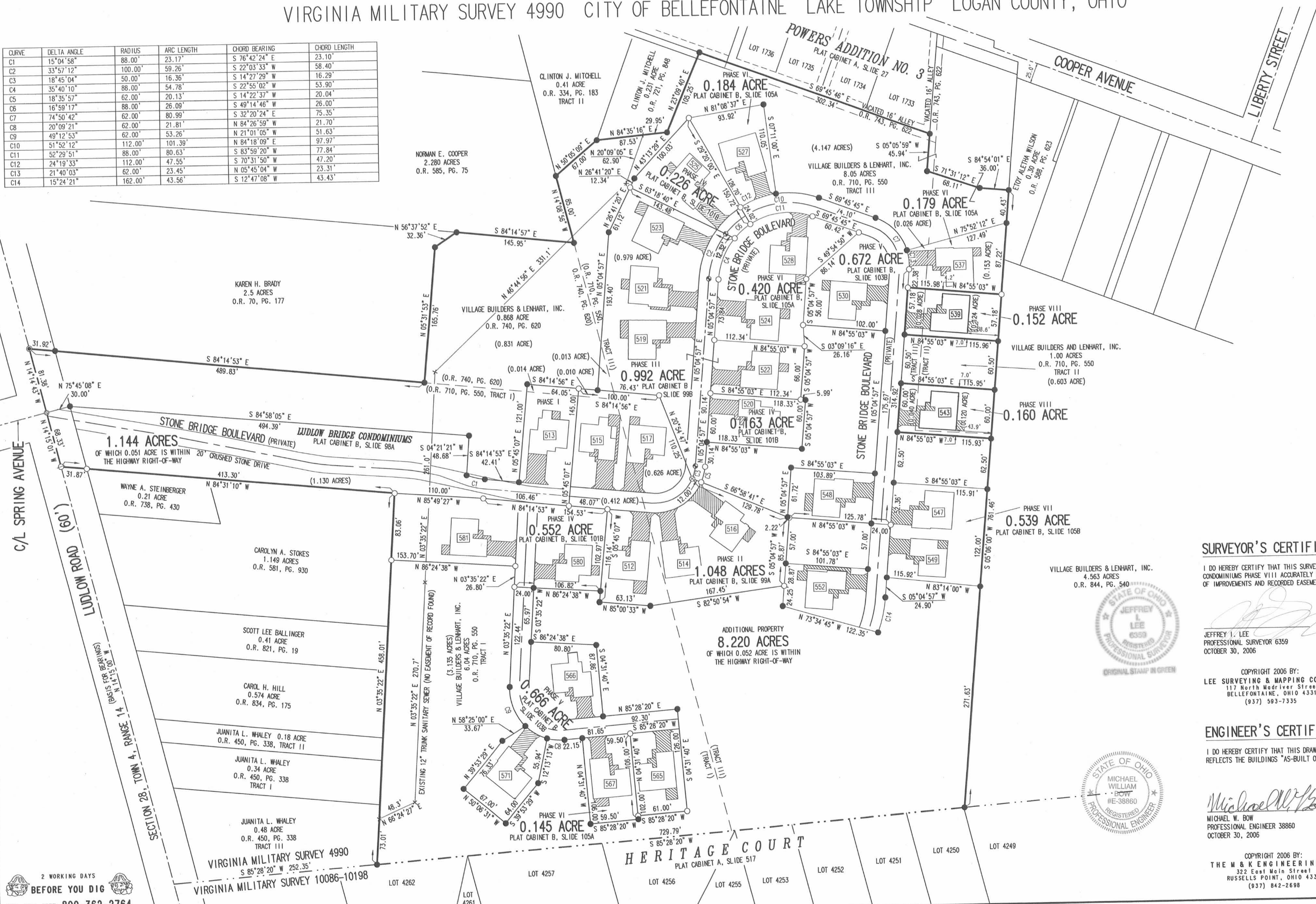
6.04 ACRE TRACT, 1.00 ACRE TRACT, 8.05 ACRE TRACT OFFICIAL RECORD 710, PAGE 550, TRACTS I, II AND III  
0.868 ACRE TRACT OFFICIAL RECORD 740, PAGE 620

VIRGINIA MILITARY SURVEY 4990 CITY OF BELLEFONTAINE LAKE TOWNSHIP LOGAN COUNTY, OHIO



- LEGEND:
- ⊙ 1-1/4 INCH IRON PIPE FOUND
  - 5/8 INCH IRON ROD SET
  - 5/8 INCH IRON ROD FOUND
  - ⊙ MAG NAIL SET
  - ⊙ MAG NAIL FOUND
  - ⊙ RAILROAD SPIKE SET
  - ⊙ RAILROAD SPIKE FOUND
  - ▨ LIMITED COMMON AREA
  - [ ] UNIT NUMBER

CURVE	DELTA ANGLE	RADIUS	ARC LENGTH	CHORD BEARING	CHORD LENGTH
C1	15°04'58"	88.00'	23.17'	S 76°42'24" E	23.10'
C2	33°57'12"	100.00'	59.26'	S 22°03'33" W	58.40'
C3	18°45'04"	50.00'	16.36'	S 14°27'29" W	16.29'
C4	35°40'10"	88.00'	54.78'	S 22°55'02" W	53.90'
C5	18°35'57"	62.00'	20.13'	S 49°14'46" W	20.04'
C6	16°59'17"	88.00'	26.09'	S 32°20'24" E	26.00'
C7	74°50'42"	62.00'	80.99'	S 21°01'05" W	51.63'
C8	20°09'21"	62.00'	21.81'	N 84°26'59" W	21.70'
C9	49°12'53"	62.00'	53.26'	N 21°01'05" W	97.97'
C10	51°52'12"	112.00'	101.39'	N 84°18'09" E	77.84'
C11	52°29'51"	88.00'	80.63'	S 83°59'20" W	47.20'
C12	24°19'33"	112.00'	47.55'	S 70°31'50" W	23.31'
C13	21°40'03"	62.00'	23.45'	N 05°45'04" W	43.43'
C14	15°24'21"	162.00'	43.56'	S 12°47'08" W	



- NOTES:
- EASEMENTS IF SHOWN ARE AS PROVIDED BY DEVELOPER. THE SURVEYOR DID NOT SEARCH FOR ADDITIONAL EASEMENTS.
  - THE WORD "CERTIFY" IS INTENDED TO BE AS DEFINED IN OHIO ADMINISTRATIVE CODE 4733-35-04(C).
  - BUILDING HEIGHT FROM PEAK OF ROOF TO GROUND:  
UNIT 539 IS 20.0'  
UNIT 543 IS 20.9'

**SURVEYOR'S CERTIFICATION:**

I DO HEREBY CERTIFY THAT THIS SURVEY OF LUDLOW BRIDGE CONDOMINIUMS PHASE VIII ACCURATELY REFLECTS THE LOCATION OF IMPROVEMENTS AND RECORDED EASEMENTS.

JEFFREY L. LEE  
PROFESSIONAL SURVEYOR 6359  
OCTOBER 30, 2006

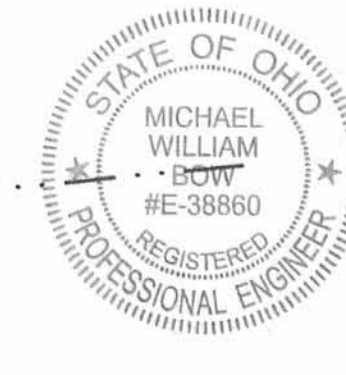


COPYRIGHT 2006 BY:  
LEE SURVEYING & MAPPING CO., INC.  
117 North Madriver Street  
BELLEFONTAINE, OHIO 43311  
(937) 593-7335

**ENGINEER'S CERTIFICATION:**

I DO HEREBY CERTIFY THAT THIS DRAWING ACCURATELY REFLECTS THE BUILDINGS "AS-BUILT OR CONSTRUCTED".

MICHAEL W. BOW  
PROFESSIONAL ENGINEER 38860  
OCTOBER 30, 2006



COPYRIGHT 2006 BY:  
THE M & K ENGINEERING CO.  
322 East Main Street  
RUSSELLS POINT, OHIO 43311  
(937) 842-2698

PRE-APPROVAL *Jan C. H.* 12-1-06  
PLAT CHECKED *Jan C. H.* 12-1-06  
TRANSFERRED THIS 1<sup>ST</sup> DAY OF DECEMBER, 2006  
AUDITOR, LOGAN COUNTY, OHIO  
RECORDED IN PLAT CABINET B, SLIDE 106B  
RECEIVED FOR RECORD AT 14:04:09 O'CLOCK P.M.  
THIS 1<sup>ST</sup> DAY OF December, 2006  
RECORDER, LOGAN COUNTY, OHIO

2 WORKING DAYS  
BEFORE YOU DIG  
CALL TOLL FREE 800-362-2764  
OHIO UTILITIES PROTECTION SERVICE.