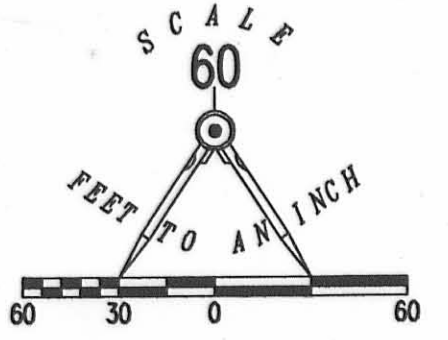


# EXHIBIT B TO DECLARATION AND BYLAWS OF LUDLOW BRIDGE CONDOMINIUMS - PHASE V

6.04 ACRE TRACT, 1.00 ACRE TRACT, 8.05 ACRE TRACT OFFICIAL RECORD 710, PAGE 550, TRACTS I, II AND III

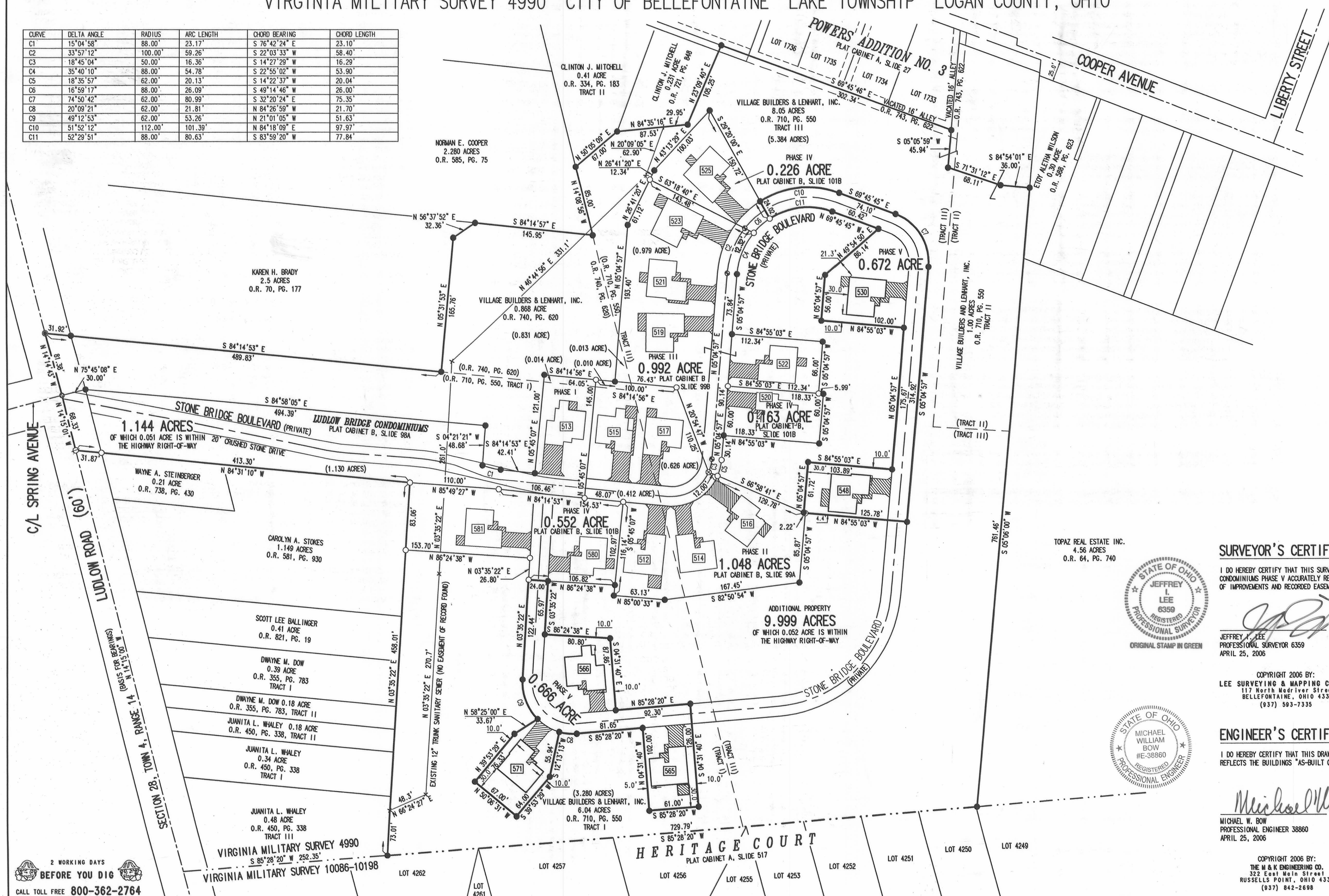
0.868 ACRE TRACT OFFICIAL RECORD 740, PAGE 620

VIRGINIA MILITARY SURVEY 4990 CITY OF BELLEFONTAINE LAKE TOWNSHIP LOGAN COUNTY, OHIO



- LEGEND:
- 1-1/4 INCH IRON PIPE FOUND
  - 5/8 INCH IRON ROD SET
  - 5/8 INCH IRON ROD FOUND
  - MAG NAIL SET
  - MAG NAIL FOUND
  - RAILROAD SPIKE SET
  - RAILROAD SPIKE FOUND
  - ▨ LIMITED COMMON AREA
  - [ ] UNIT NUMBER

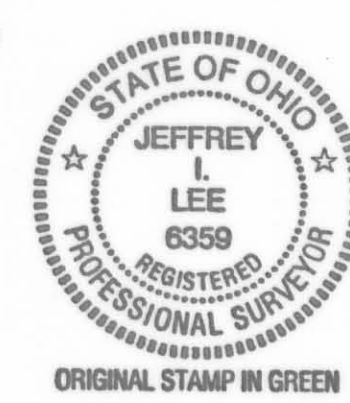
CURVE	DELTA ANGLE	RADIUS	ARC LENGTH	CHORD BEARING	CHORD LENGTH
C1	15°04'58"	88.00'	23.17'	S 76°42'24" E	23.10'
C2	33°57'12"	100.00'	59.26'	S 22°03'33" W	58.40'
C3	18°45'04"	50.00'	16.36'	S 14°27'29" W	16.29'
C4	35°40'10"	88.00'	54.78'	S 22°55'02" W	53.90'
C5	18°35'57"	62.00'	20.13'	S 14°22'37" W	20.04'
C6	16°59'17"	88.00'	26.09'	S 49°14'46" W	26.00'
C7	74°50'42"	62.00'	80.99'	S 32°20'24" E	75.35'
C8	20°09'21"	62.00'	21.81'	N 84°26'59" W	21.70'
C9	49°12'53"	62.00'	53.26'	N 21°01'05" W	51.63'
C10	51°52'12"	112.00'	101.39'	N 84°18'09" E	97.97'
C11	52°29'51"	88.00'	80.63'	S 83°59'20" W	77.84'



- NOTES:
- EASEMENTS IF SHOWN ARE AS PROVIDED BY DEVELOPER. THE SURVEYOR DID NOT SEARCH FOR ADDITIONAL EASEMENTS.
  - THE WORD "CERTIFY" IS INTENDED TO BE AS DEFINED IN OHIO ADMINISTRATIVE CODE 4733-35-04(C).
  - BUILDING HEIGHT FROM PEAK OF ROOF TO GROUND:  
 UNIT 530 IS 23.9'  
 UNIT 548 IS 21.0'  
 UNIT 565 IS 19.8'  
 UNIT 566 IS 21.1'  
 UNIT 571 IS 19.5'

**SURVEYOR'S CERTIFICATION:**

I DO HEREBY CERTIFY THAT THIS SURVEY OF LUDLOW BRIDGE CONDOMINIUMS PHASE V ACCURATELY REFLECTS THE LOCATION OF IMPROVEMENTS AND RECORDED EASEMENTS.

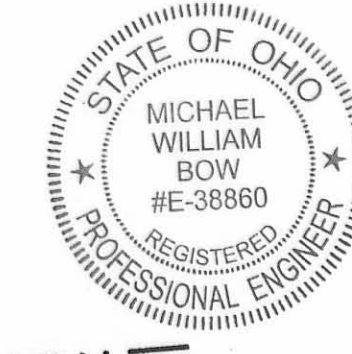


JEFFREY L. LEE  
 PROFESSIONAL SURVEYOR 6359  
 APRIL 25, 2006

COPYRIGHT 2006 BY:  
 LEE SURVEYING & MAPPING CO., INC.  
 117 North Madison Street  
 BELLEFONTAINE, OHIO 43311  
 (937) 593-7335

**ENGINEER'S CERTIFICATION:**

I DO HEREBY CERTIFY THAT THIS DRAWING ACCURATELY REFLECTS THE BUILDINGS AS-BUILT OR CONSTRUCTED.



MICHAEL W. BOW  
 PROFESSIONAL ENGINEER 38860  
 APRIL 25, 2006

COPYRIGHT 2006 BY:  
 THE M & K ENGINEERING CO.  
 322 East Main Street  
 RUSSELLS POINT, OHIO 43311  
 (937) 842-2698

PRE-APPROVAL *Jan C. Hio* 5-16-06  
 PLAT CHECKED *Jan C. Hio* 5-16-06  
 TRANSFERRED THIS 22nd DAY OF MAY, 2006  
 AUDITOR, LOGAN COUNTY, OHIO  
 RECORDED IN PLAT CABINET B, SLIDE 103B  
 RECEIVED FOR RECORD AT 10:00 O'CLOCK A.M.  
 THIS 22nd DAY OF MAY, 2006  
 RECORDER, LOGAN COUNTY, OHIO

2 WORKING DAYS BEFORE YOU DIG  
 CALL TOLL FREE 800-362-2764  
 OHIO UTILITIES PROTECTION SERVICE