

ZEUS SHOPPING CENTER, INC.
11.81 ACRES
O.R. 203, PG. 855

ZEUS SHOPPING CENTER, INC.
2.18 ACRES
O.R. 203, PG. 855, TRACT 2

RED BUD HILL, LTD.
3.749 ACRES
O.R. 12, PG. 167

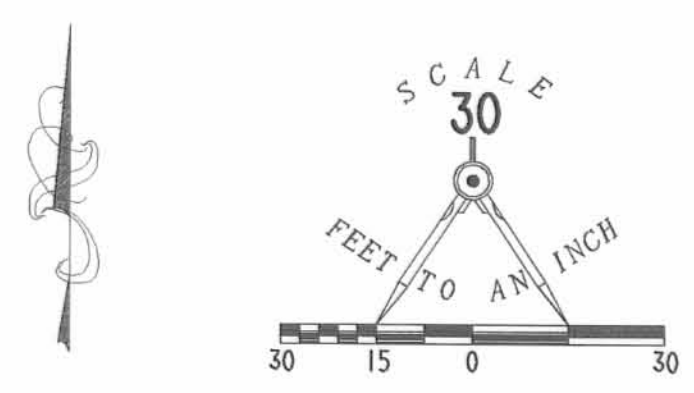
ZEUS SHOPPING CENTER, INC.
1.223 ACRE
O.R. 270, PG. 644

**LAKWOOD TERRACE
CONDOMINIUM, REHAB. AND DAYCARE**
3.677 ACRES
VIRGINIA MILITARY SURVEY 4399
CITY OF BELLEFONTAINE
LAKE TOWNSHIP
LOGAN COUNTY, OHIO

PART OF THE
BUCKEYE COMMUNITY HOPE FOUNDATION
ORIGINAL 4.175 ACRES
O.R. 253, PG. 236

HILLS AND DALES PARTNERSHIP
28.64 ACRES
O.R. 72, PG. 880

BELLEFONTAINE MANOR, LTD.
4.59 ACRES
VOL. 368, PG. 213



- LEGEND
- 5/8" IRON ROD SET
 - 1/2" IRON ROD FOUND
 - ⊙ RAILROAD SPIKE SET

BONNIE LANE (10.498 ACRE)

LAKWOOD DRIVE (40')

WE DO HEREBY STATE THAT THESE DRAWINGS OF LAKWOOD TERRACE CONDOMINIUM, REHAB. AND DAYCARE SHOW ALL BUILDINGS AS CONSTRUCTED. ALL OTHER IMPROVEMENTS ARE BASED UPON RECORDS. THIS IS NOT A NEW BOUNDARY SURVEY AS DEFINED IN OHIO ADMINISTRATIVE CODE 4733-37.

DATE 8/15/96
DONALD W. SCHOFIELD
ARCHITECT

DATE 8/15/96
JEFFREY I. LEE
PROFESSIONAL SURVEYOR 6359

COPYRIGHT 1996 BY:
DONALD SCHOFIELD & ASSOCIATES, INC.
4150 TULLER ROAD, SUITE 204
DUBLIN, OHIO 43017
TEL (614) 764-9338

COPYRIGHT 1996 BY:
LEE SURVEYING & MAPPING CO., INC.
117 North Madriver Street
BELLEFONTAINE, OHIO 43311
(513) 593-7335



APPROVED BY THE BELLEFONTAINE PLANNING COMMISSION
THIS 28TH DAY OF August, 1996

Frank L. Norene
CLERK, PLANNING COMMISSION

PREAPPROVAL *Suzanne M. Yeasty 8-30-96*

PLAT CHECKED *Suzanne M. Yeasty 8-30-96*

TRANSFERRED THIS 30TH DAY OF August, 1996

Nickie E. Godwin
AUDITOR, LOGAN COUNTY, OHIO

RECORDED IN PLAT CABINET B, SLIDE 11A-15A

RECEIVED FOR RECORD AT 9:42:00 O'CLOCK A.M.

THIS 30TH DAY OF August, 1996

Carolyn Callis
RECORDER, LOGAN COUNTY, OHIO

9107006

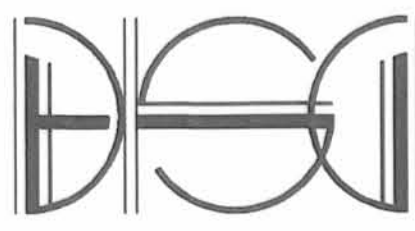
DATE	11/10/95
COM. NO.	DC
HEET NO.	3
DWG. TYPE	DC

DONALD SCHOFIELD + ASSOCIATES, INC.
 4150 TULLER ROAD, SUITE 204
 DUBLIN, OHIO 43017
 TEL (614) 764-9338
 FAX (614) 764-4731

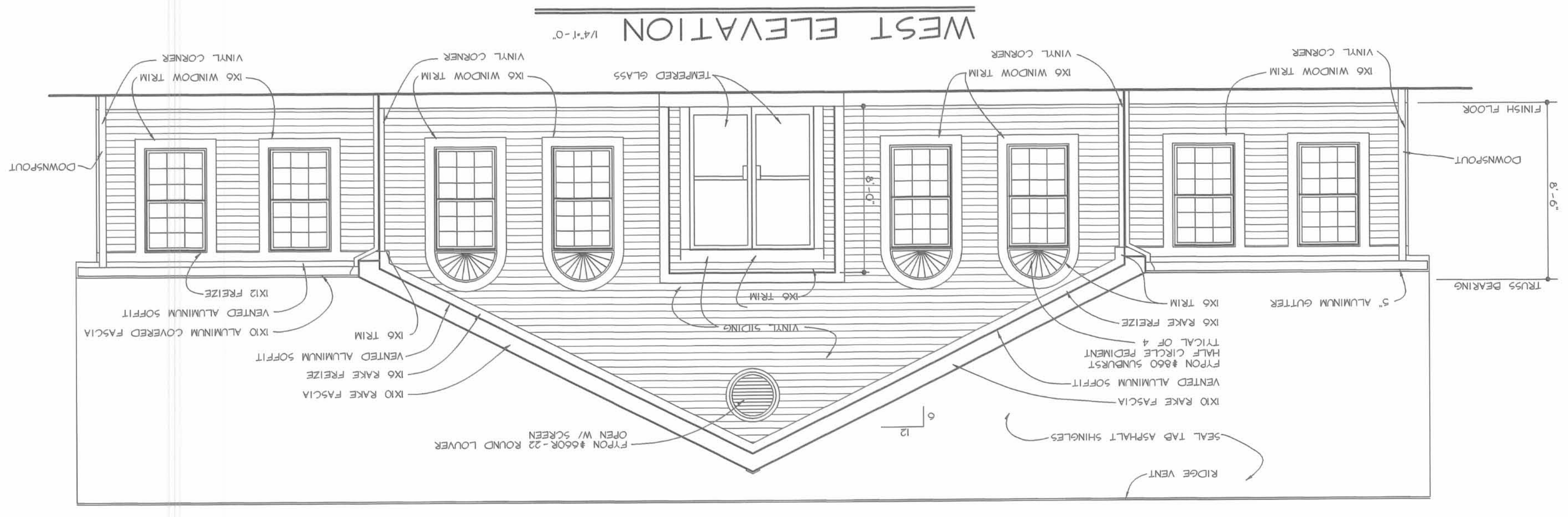
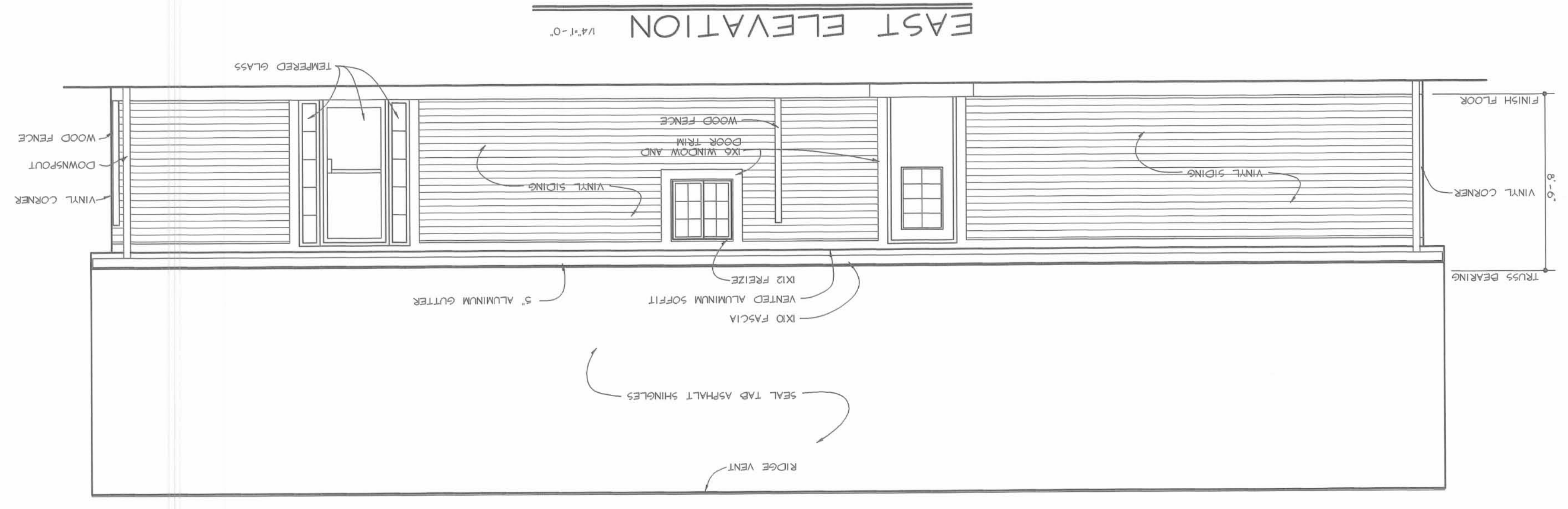
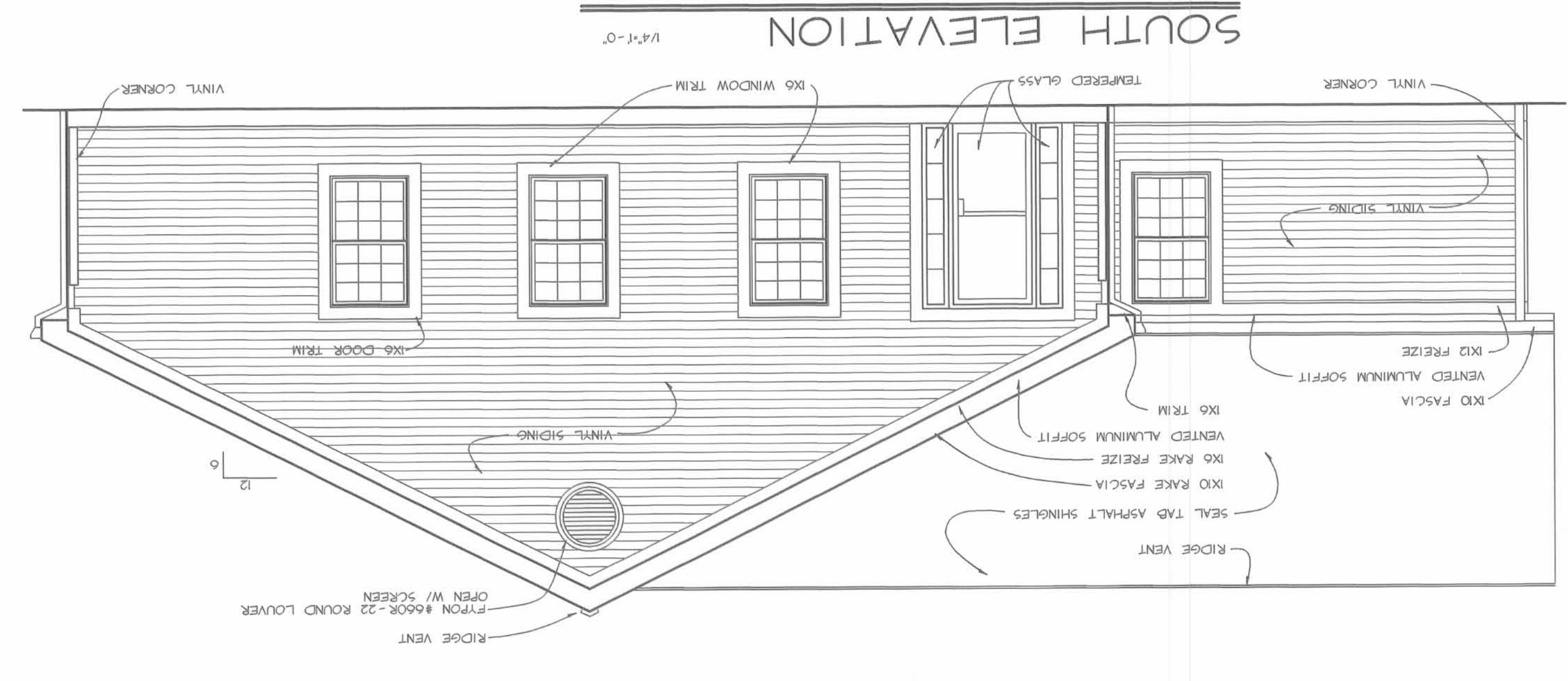
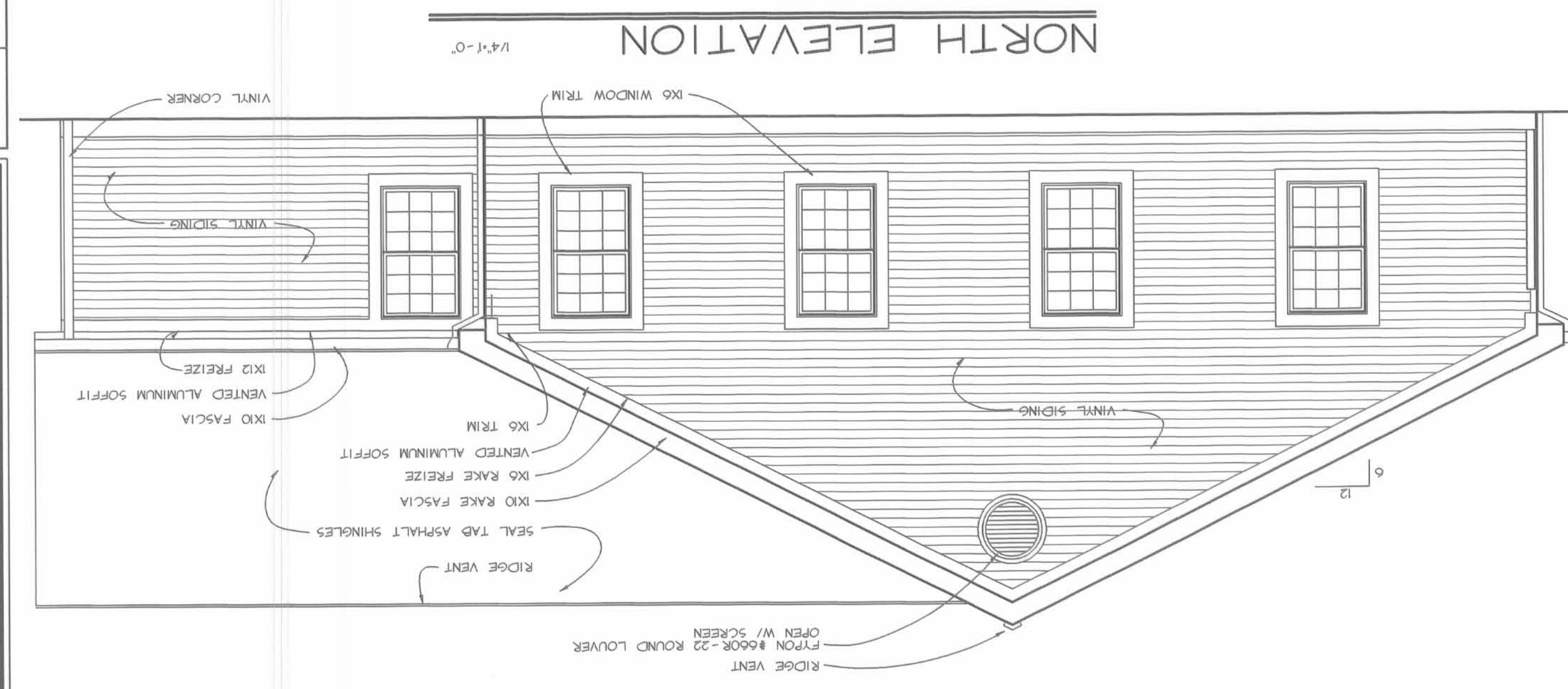
LAKEWOOD TERRACE
 DAYCARE FACILITY
 LAKEWOOD DRIVE
 BELLEFONTAINE, OHIO

REVISIONS	11/17/95
ADDITION #1	

THESE DRAWINGS ARE THE PROPERTY OF DONALD SCHOFIELD + ASSOCIATES, INC. AND MAY NOT BE REPRODUCED, COPIED, ALTERED OR COMBINED WITHOUT THE EXPRESS WRITTEN CONSENT OF DSA ARCHITECTS, INC.



Plat Cab B Side 12A



11/10/95	131611
DATE	COMA NO.
4	A
SHEET NO.	CHG. TYPE

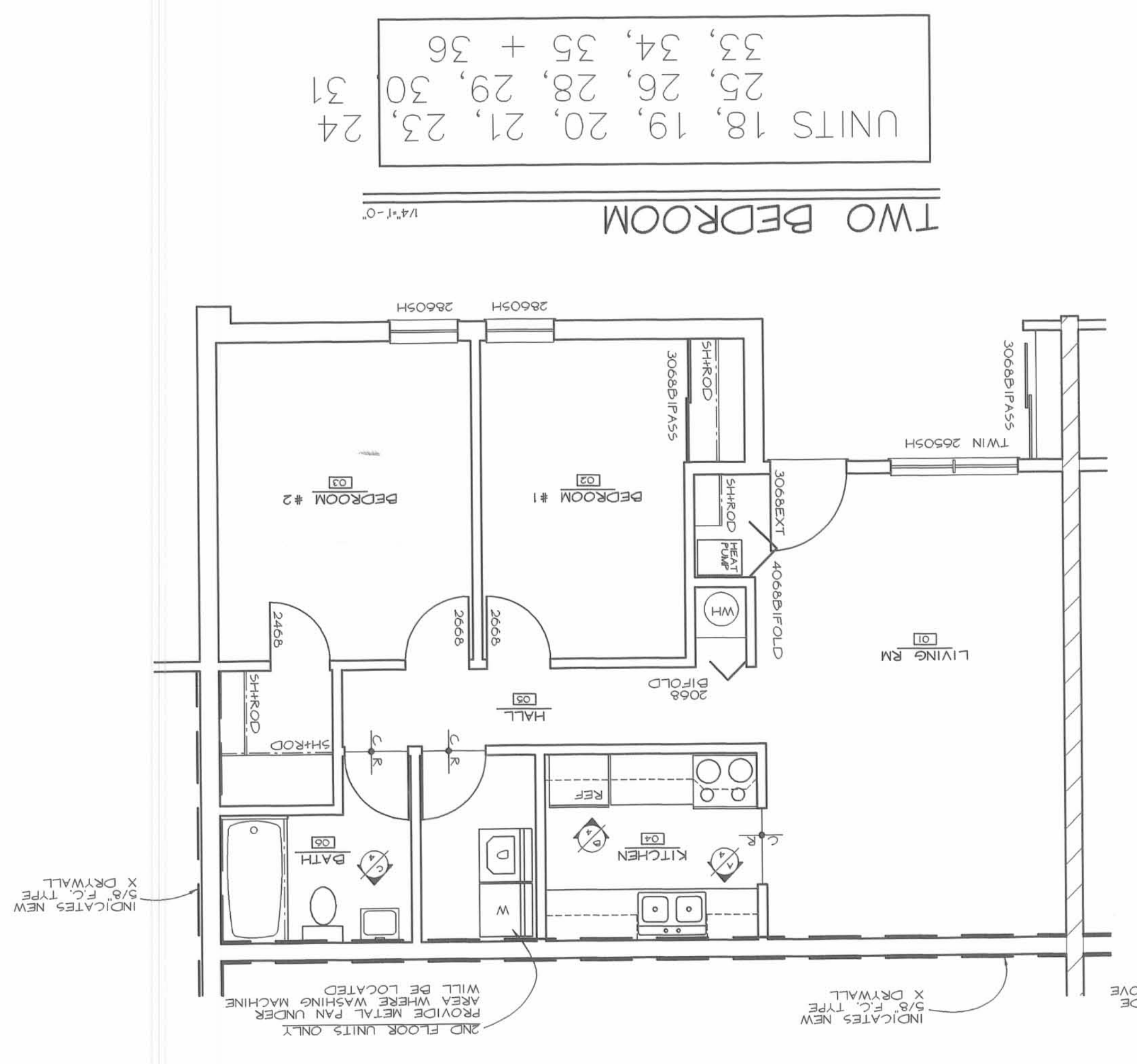
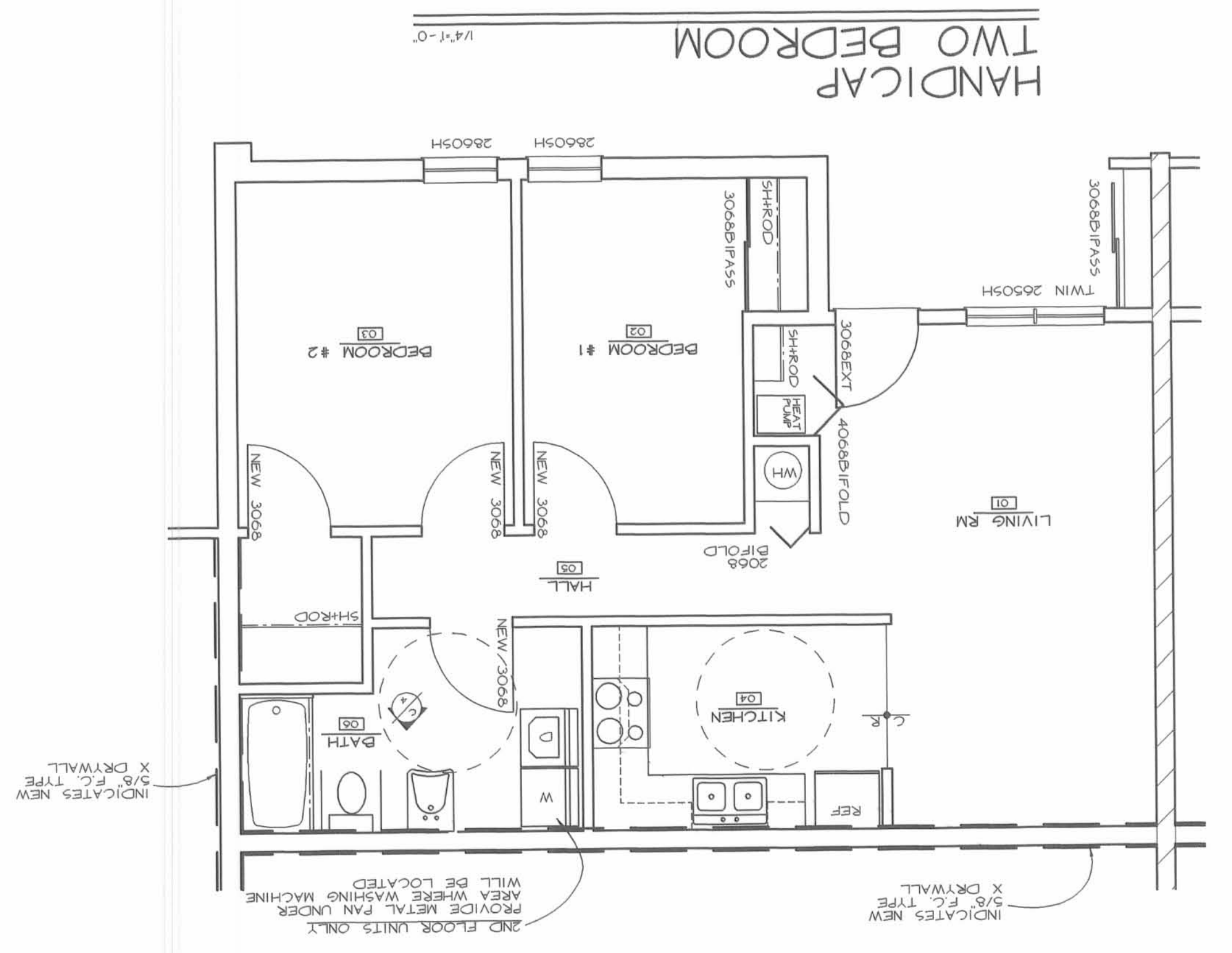
DONALD SCHOFIELD + ASSOCIATES, INC.
 4150 TULLER ROAD, SUITE 204
 DUBLIN, OHIO 43017
 TEL (614) 764-9338
 FAX (614) 764-4731

LAKEWOOD TERRACE
 CONDOMINIUM REHAB
 LAKEWOOD DRIVE
 BELLEFONTAINE, OHIO

REVISIONS

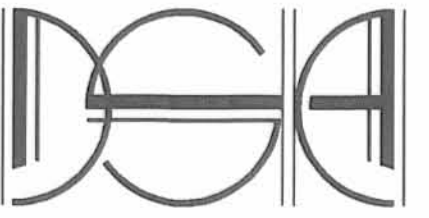
11/17/95	ADDDUM #1
2/8/96	ADDDUM #2

THESE DRAWINGS ARE THE PROPERTY OF DONALD SCHOFIELD + ASSOCIATES, INC. AND MAY NOT BE REPRODUCED, COPIED, ALTERED, OR CHANGED WITHOUT THE EXPRESS WRITTEN CONSENT OF DONALD SCHOFIELD + ASSOCIATES, INC.



UNITS 18, 19, 20, 21, 23, 24
 25, 26, 28, 29, 30, 31
 33, 34, 35 + 36

PLEASE NOTE
 GENERAL CONTRACTOR TO
 INSURE THAT SEPARATION
 WALLS EXTEND TO UNDERSIDE
 OF ROOF DECK/FRAMING ABOVE



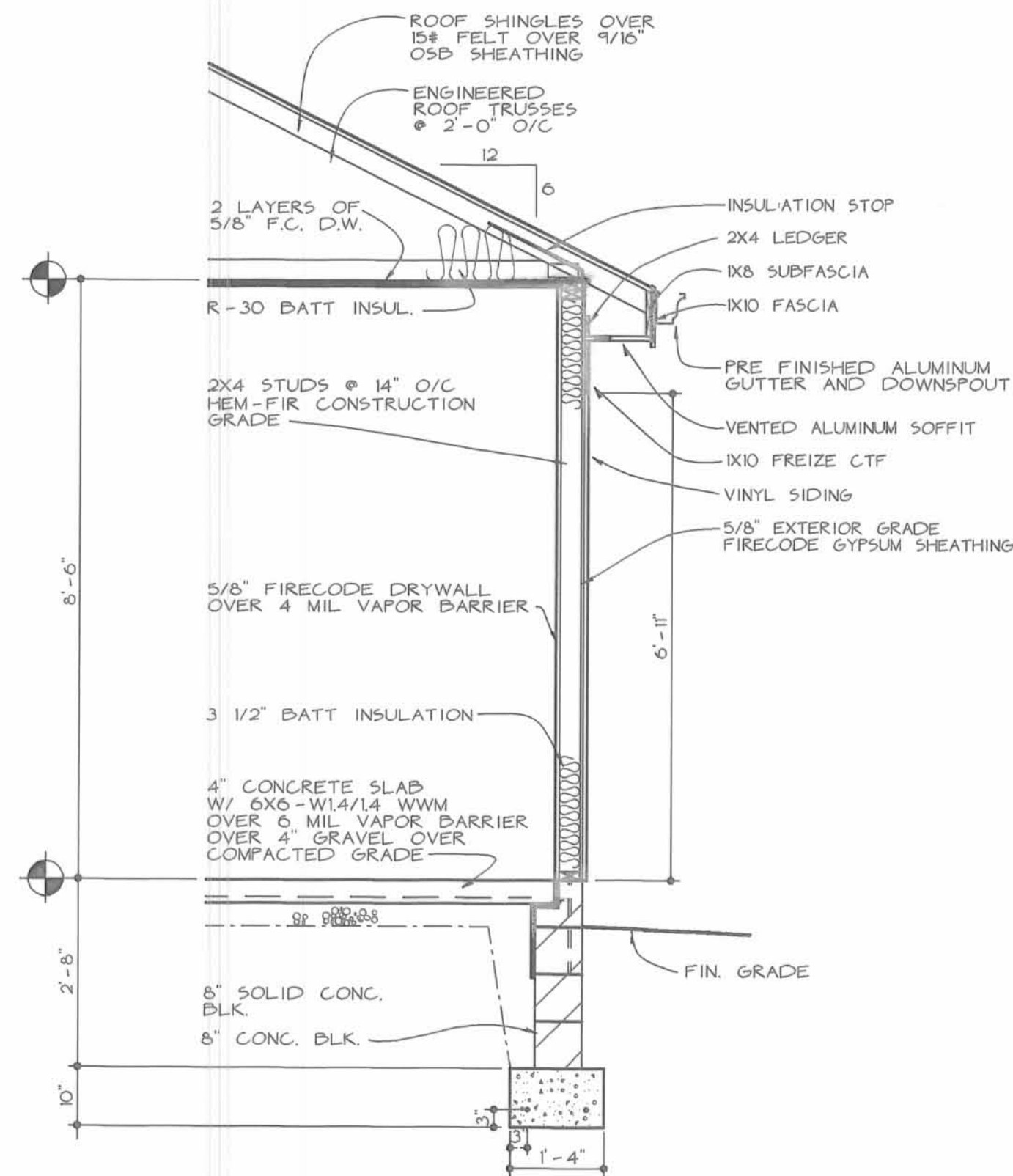
THESE DRAWINGS ARE THE PROPERTY OF DSA ARCHITECTS INC. AND MAY NOT BE REPRODUCED, ALTERED OR CHANGED WITHOUT THE EXPRESSED WRITTEN CONSENT OF DSA ARCHITECTS INC.

REVISIONS

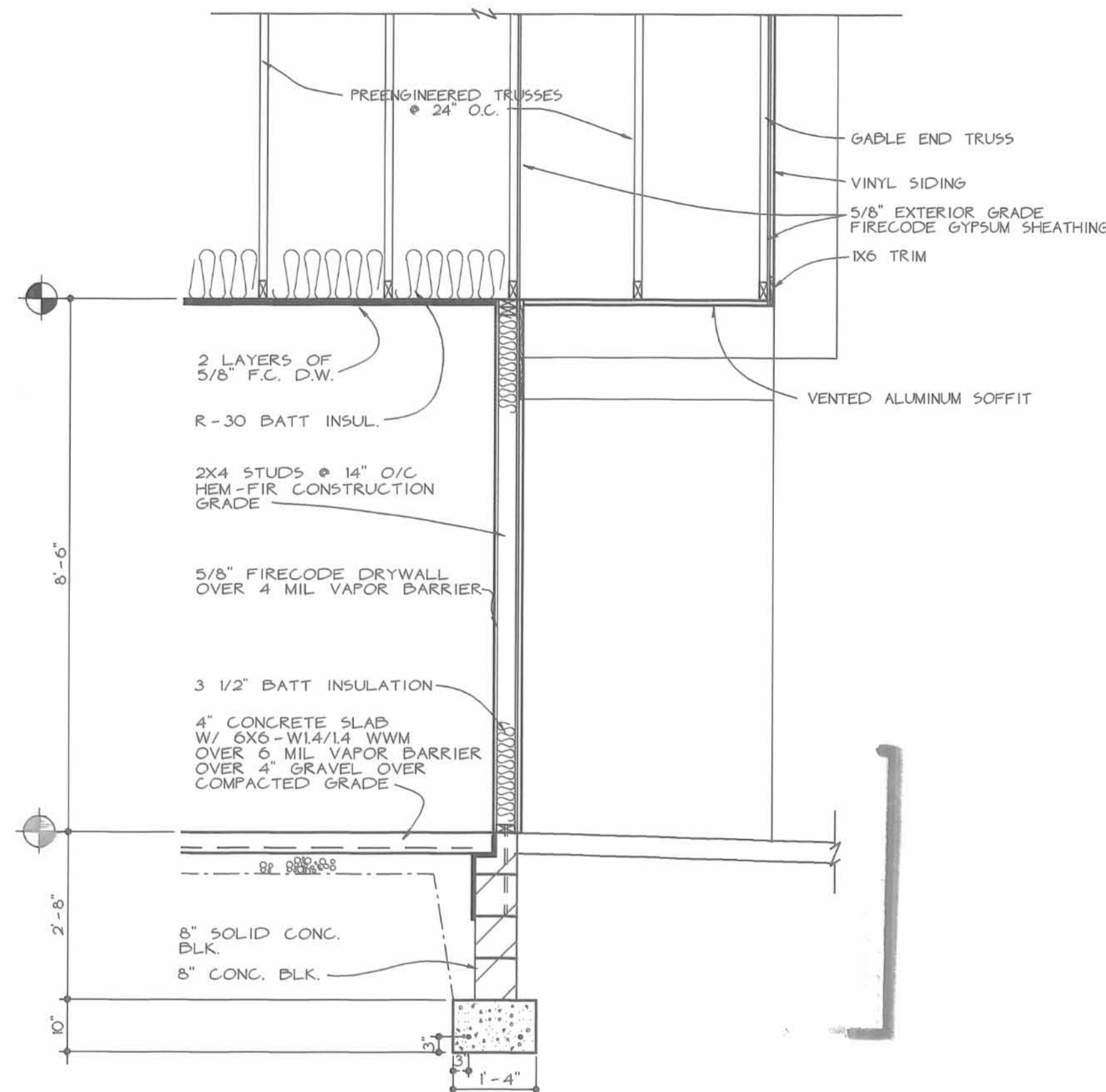
LAKWOOD TERRACE
 DAYCARE FACILITY
 LAKEWOOD DRIVE
 BELLEFONTAINE, OHIO

DONALD SCHOFIELD + ASSOCIATES, INC.

4150 TULLER ROAD, SUITE 204
 DUBLIN, OHIO 43017
 TEL (614) 764-9338
 FAX (614) 764-4731

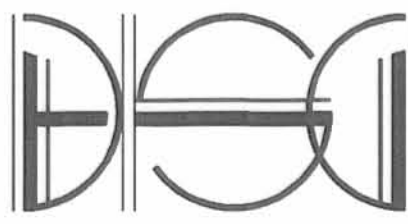


SECTION A 1/2"=1'-0"



SECTION B 1/2"=1'-0"

DWG. TYPE	SHEET NO.
DC	5
CONC. NO.	DATE
931612	11/10/95



Plat Cab B Side 14A

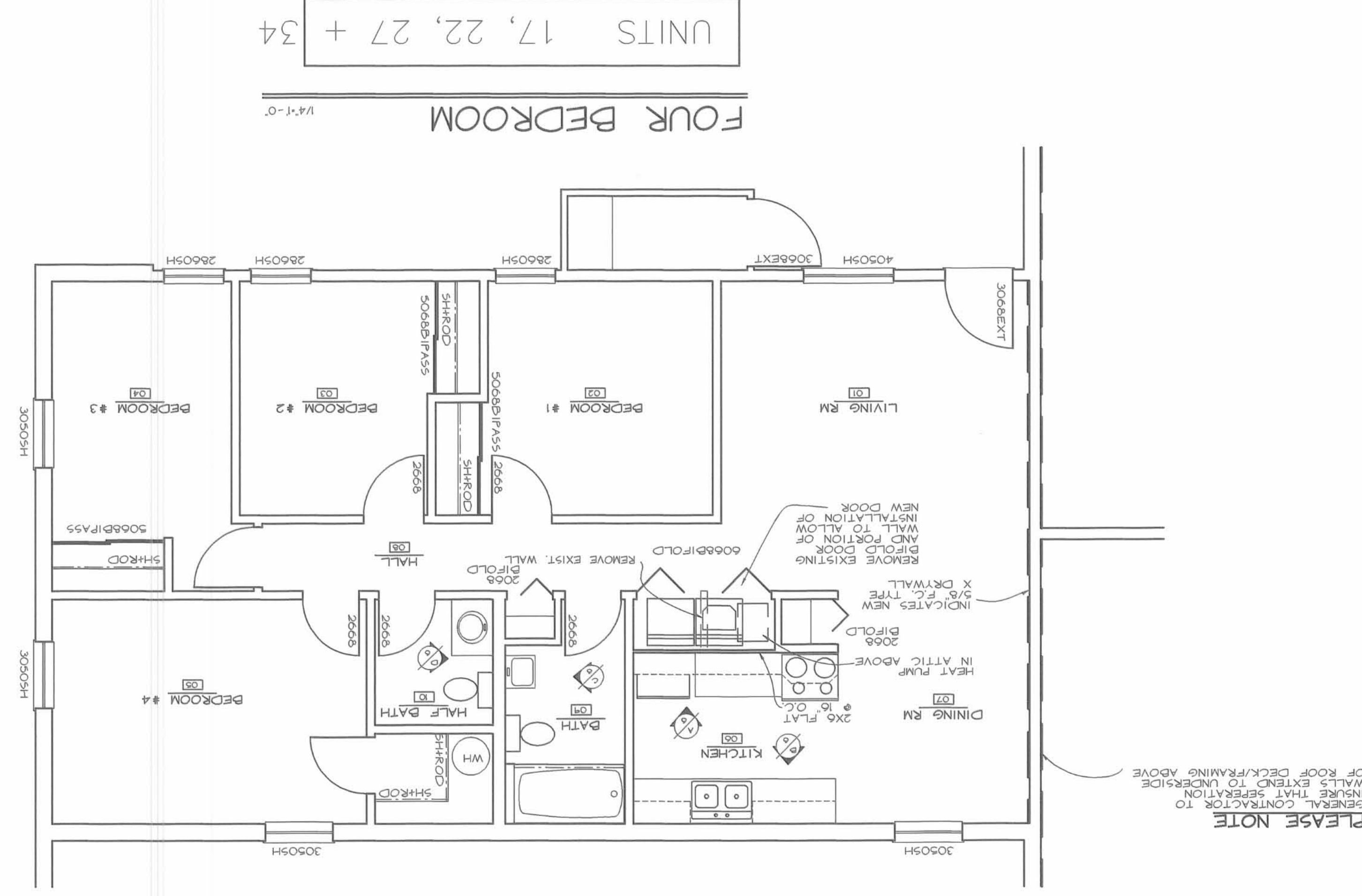
THESE DRAWINGS ARE THE PROPERTY OF DON ARCHITECTS INC AND MAY NOT BE REPRODUCED, COPIED, ALTERED OR CHANGED WITHOUT THE EXPRESS WRITTEN CONSENT OF DON ARCHITECTS INC.

REVISION	DATE	DESCRIPTION
2	2/8/96	ADDENDUM #2
1	1/17/95	ADDENDUM #1

LAKWOOD TERRACE
 CONDOMINIUM REHAB
 LAKWOOD DRIVE
 BELLEFONTAINE, OHIO

DONALD SCHOFIELD + ASSOCIATES, INC.
 4150 TULLER ROAD, SUITE 204
 DUBLIN, OHIO 43017
 TEL (614) 764-9338
 FAX (614) 764-4731

CHG. TYPE	SHEET NO.	DATE	COM. NO.
A	6	11/10/95	131611



FOUR BEDROOM
 UNITS 17, 22, 27 + 34
 1/4"=1'-0"

BUILDING TYPE A
RANCH EXTERIOR ELEVATIONS

931011	DATE	11/10/95
A	SHEET NO.	8

DONALD SCHOFIELD + ASSOCIATES, INC.
 4150 TULLER ROAD, SUITE 204
 DUBLIN, OHIO 43017
 TEL (614) 764-9338
 FAX (614) 764-4731

LAKEWOOD TERRACE
 CONDOMINIUM REHAB
 LAKEWOOD DRIVE
 BELLEFONTAINE, OHIO

REVISIONS
 2/8/96
 ADDENDUM #2

THESE DRAWINGS ARE THE
 PROPERTY OF DSA ARCHITECTS
 AND MAY NOT BE REPRODUCED
 OR ALTERED OR CHANGED
 WITHOUT THE EXPRESS
 WRITTEN CONSENT OF DSA
 ARCHITECTS INC.

