

2 WORKING DAYS  
**BEFORE YOU DIG**  
CALL TOLL FREE **800-362-2764**  
OHIO UTILITIES PROTECTION SERVICE.

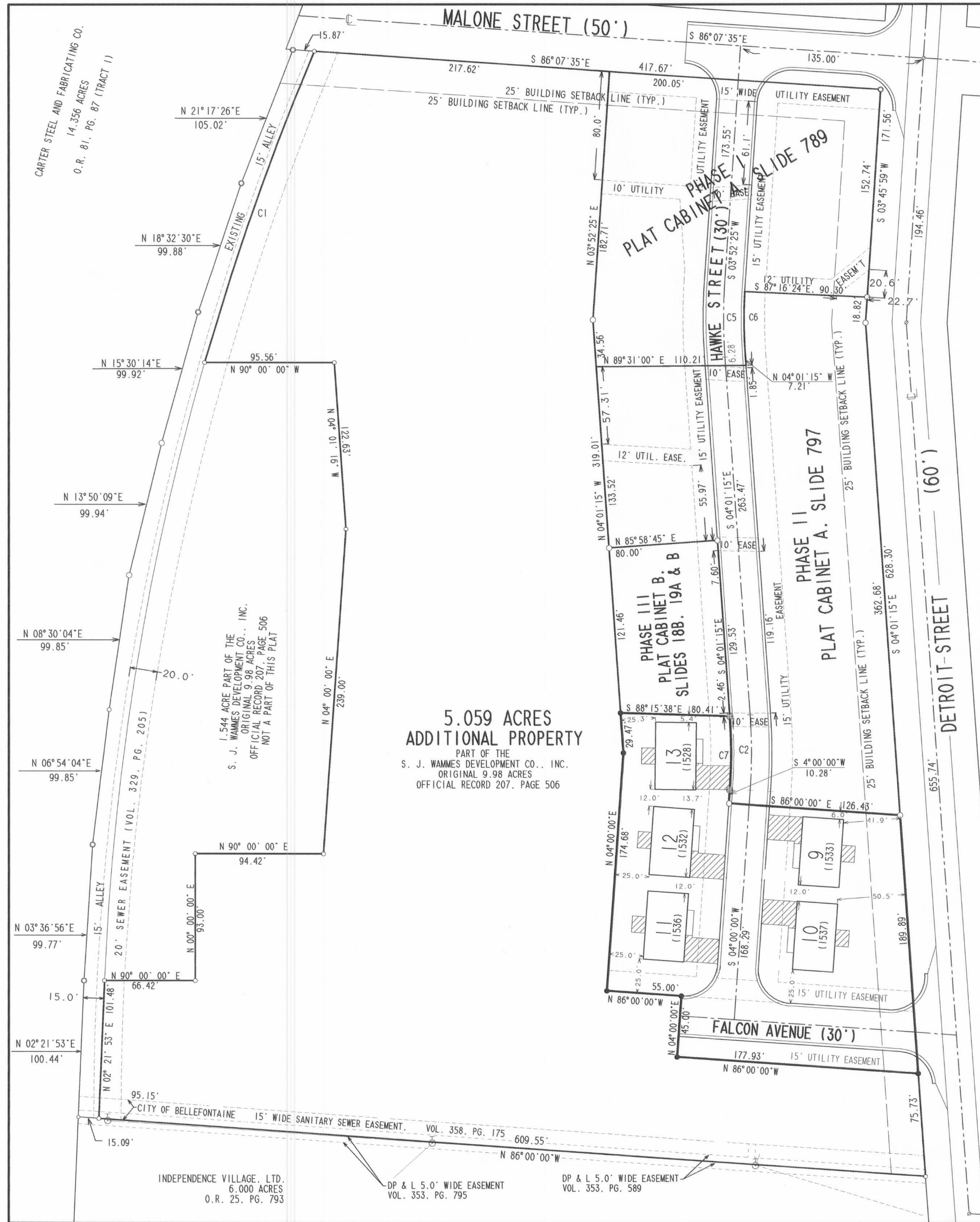
- LEGEND:
- 5/8" IRON ROD SET
  - 5/8" IRON ROD FOUND
  - 5/8" IRON PIPE FOUND
  - 1/2" IRON ROD FOUND
  - P.K. NAIL FOUND
  - ⊕ CHISELED + SET ON CONCRETE CURB

54 UNIT NUMBER  
(1545) STREET ADDRESS

- LIMITED COMMON AREA
- ALL AREAS AND IMPROVEMENTS NOT LABELED WITH A UNIT DESIGNATION OR AS LIMITED COMMON AREA ARE COMMON AREA.

CURVE	DELTA ANGLE	RADIUS	ARC	TANGENT	CHORD	CHORD BEARING
C 1	07°08'14"	1947.52'	242.60'	121.46	242.44'	S 19°31'36"W
C 2	08°01'15"	400.00'	56.00'	28.04'	55.95'	S 00°00'38"E
C 5	07°53'40"	400.00'	55.11'	27.60'	55.07'	S 00°04'25"E
C 6	07°00'06"	385.00'	47.05'	23.55'	47.02'	N 00°31'12"W
C 7	08°01'15"	385.00'	53.89'	26.99'	53.85'	S 00°00'38"E

- NOTES:
- ALL RESIDENCE UNITS ARE SEPARATED BY A DISTANCE OF 12.0 FEET BETWEEN THE FOUNDATION WALLS UNLESS OTHERWISE NOTED ON THIS PLAN.
  - UTILITY EASEMENTS ARE NOT EXCLUSIVE AND ARE SUBJECT TO ROOF AND/OR GUTTER OVERHANG.



**5.059 ACRES**  
**ADDITIONAL PROPERTY**  
PART OF THE  
S. J. WAMMES DEVELOPMENT CO., INC.  
ORIGINAL 9.98 ACRES  
OFFICIAL RECORD 207, PAGE 506

**CONDOMINIUM DRAWINGS FOR**  
**PHASE IV - 1.006 ACRE**  
**IRON CITY ESTATES CONDOMINIUM**  
SECTION 33, TOWN 4, RANGE 14  
CITY OF BELLEFONTAINE  
LAKE TOWNSHIP  
LOGAN COUNTY, OHIO  
**PLOT PLAN**

PART OF THE  
S. J. WAMMES DEVELOPMENT CO., INC.  
ORIGINAL 9.98 ACRES  
OFFICIAL RECORD 207, PAGE 506



WE DO HEREBY STATE THAT THESE DRAWINGS OF IRON CITY ESTATES CONDOMINIUM SHOW ALL BUILDINGS AS CONSTRUCTED.

*Michael W. Bow*  
MICHAEL W. BOW  
PROFESSIONAL ENGINEER 38860  
NOVEMBER 13, 1998

*Jeffrey T. Lee*  
JEFFREY T. LEE  
PROFESSIONAL SURVEYOR 6359  
NOVEMBER 13, 1998

**THE M & K ENGINEERING CO.**  
1691 T.R. 31 North  
BELLEFONTAINE, OHIO 43311  
(513) 592-2697

**LEE SURVEYING & MAPPING CO.**  
117 North Madriver Street  
BELLEFONTAINE, OHIO 43311  
(937) 593-7335



APPROVED BY THE BELLEFONTAINE PLANNING COMMISSION  
THIS 11<sup>th</sup> DAY OF January, 1999.

*Father L. Brown*  
CLERK, PLANNING COMMISSION

PLAT REVIEWED Joseph M. Mundy 12-15-98

PLAT CHECKED Jon C. Adams 1-15-99

TRANSFERRED THIS 19<sup>th</sup> DAY OF January, 1999.

*Michael E. Gowan*  
AUDITOR, LOGAN COUNTY, OHIO

RECORDED IN PLAT CABINET B, SLIDE 37B, 38A, 38B

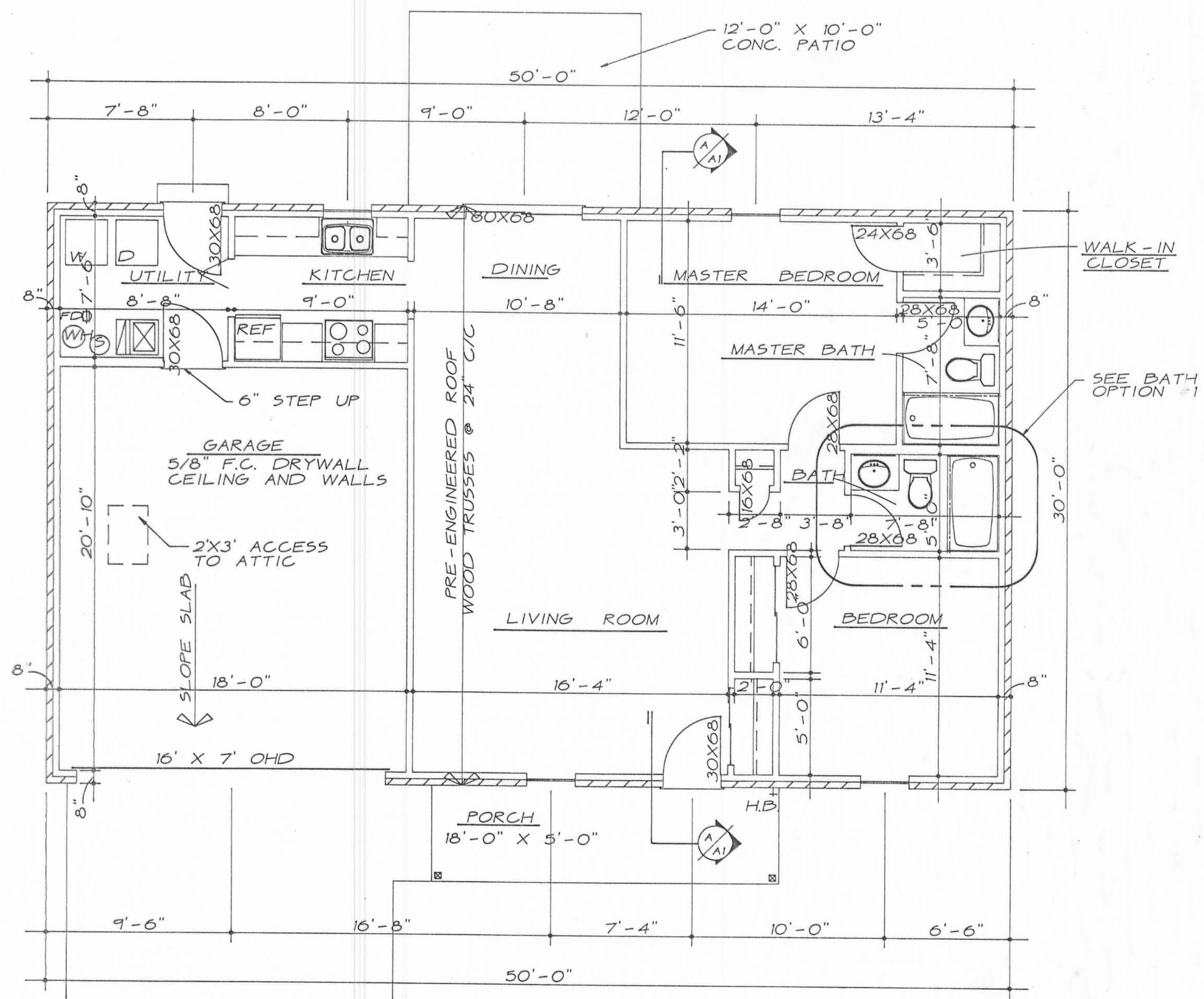
RECEIVED FOR RECORD AT 10:44:00 O'CLOCK A.M.

THIS 19<sup>th</sup> DAY OF January, 1999.

*Caroline Collins*  
RECORDER, LOGAN COUNTY, OHIO

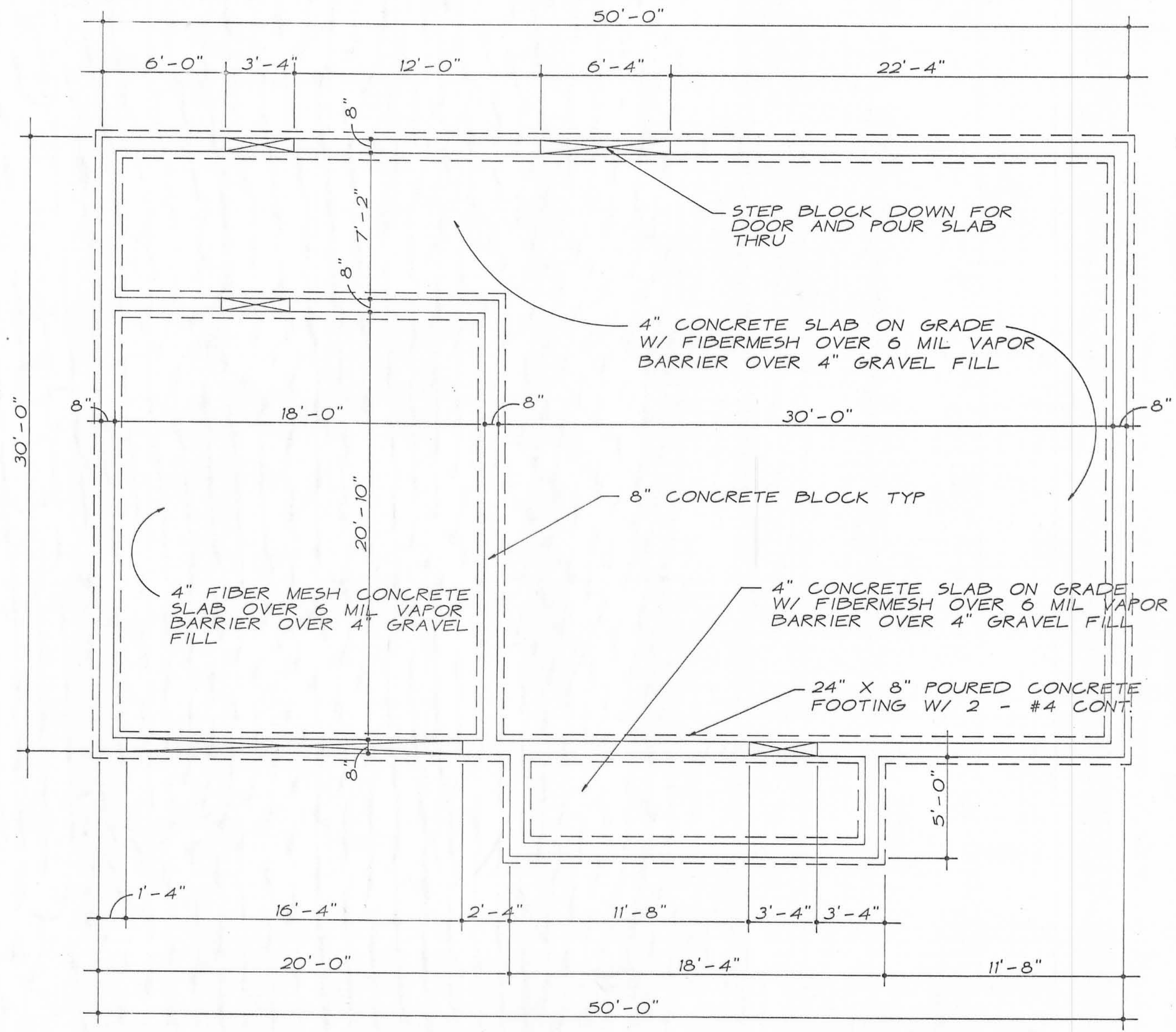
9900482

ORIGINAL STAMP IN GREEN



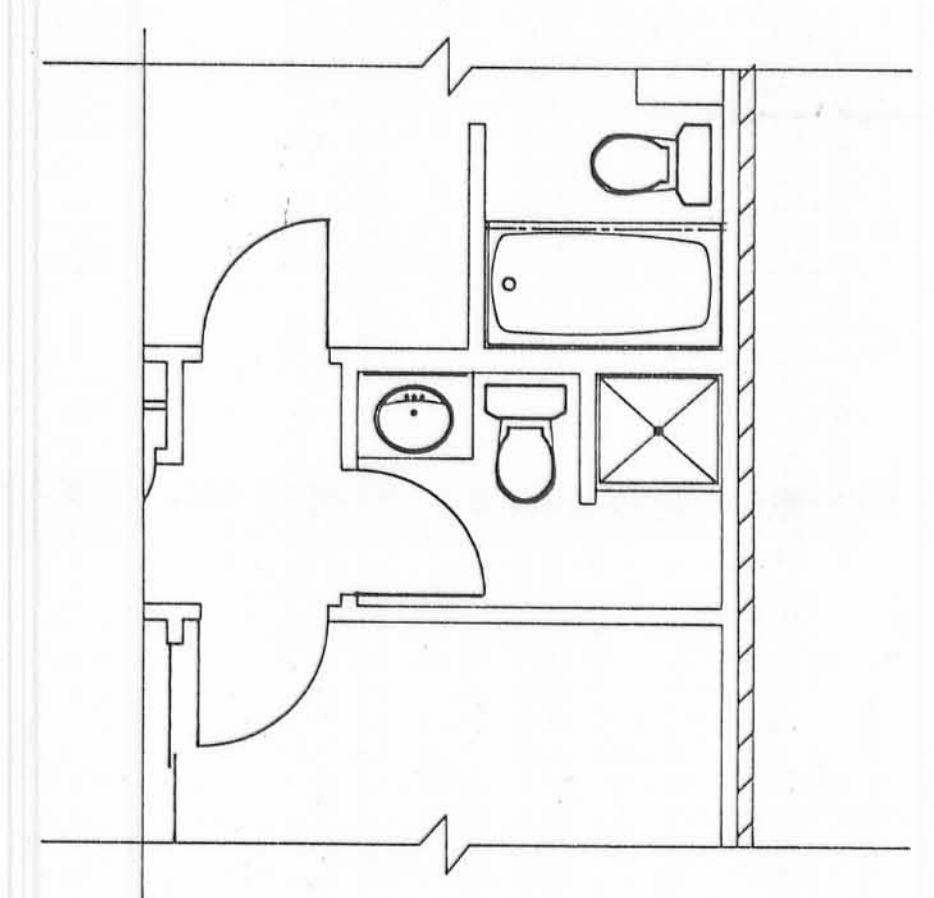
**FLOOR PLAN**

SCALE: 1/4" = 1'-0"



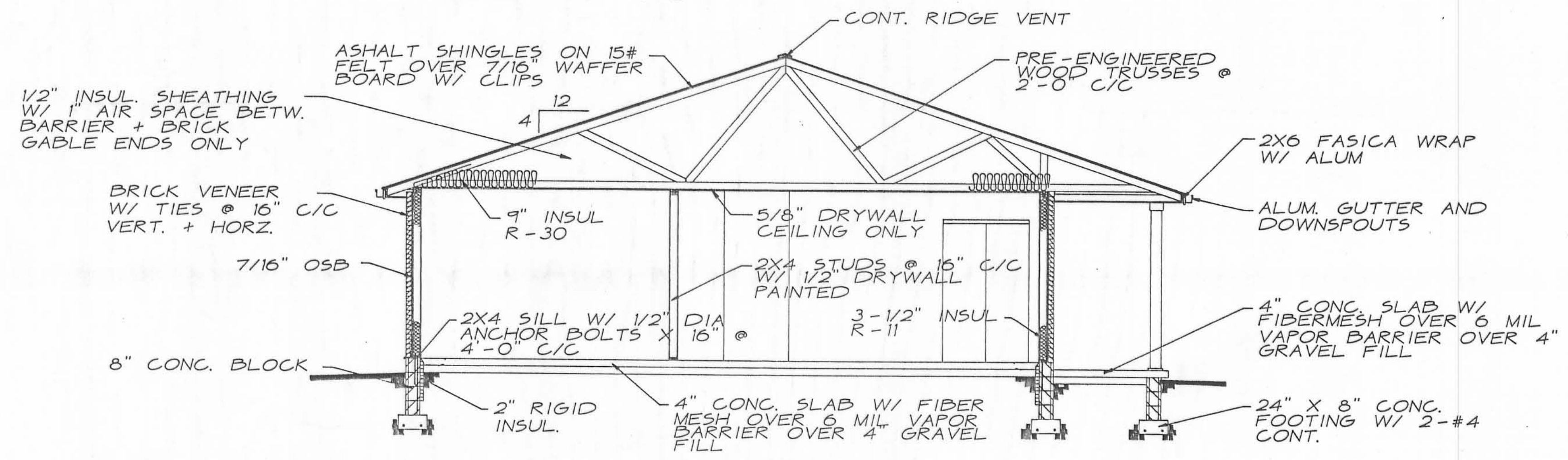
**FOUNDATION PLAN**

SCALE: 1/4" = 1'-0"



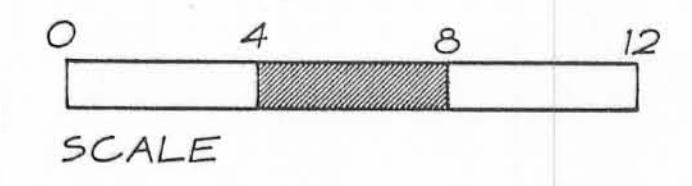
**SHOWER OPTION #1**

SCALE: 1/4" = 1'-0"



**SECTION A-A**

SCALE: 1/4" = 1'-0"



ARCHITECTURAL STRUCTURES ASSOCIATED  
ARCHITECTS • ENGINEERS • PLANNERS

P.O. BOX 261  
PIQUA, OHIO 45356  
(513) 773-9452

P.O. BOX 185  
URBANA, OHIO 43078  
(513) 652-1628

PROJECT NO.	92175
DRAWING TYPE	FLOOR - DWG
REVISIONS	1 REVIS 8-21-94

**IRON CITY ESTATES**  
SPEC HOUSE

DATE 9-26-93

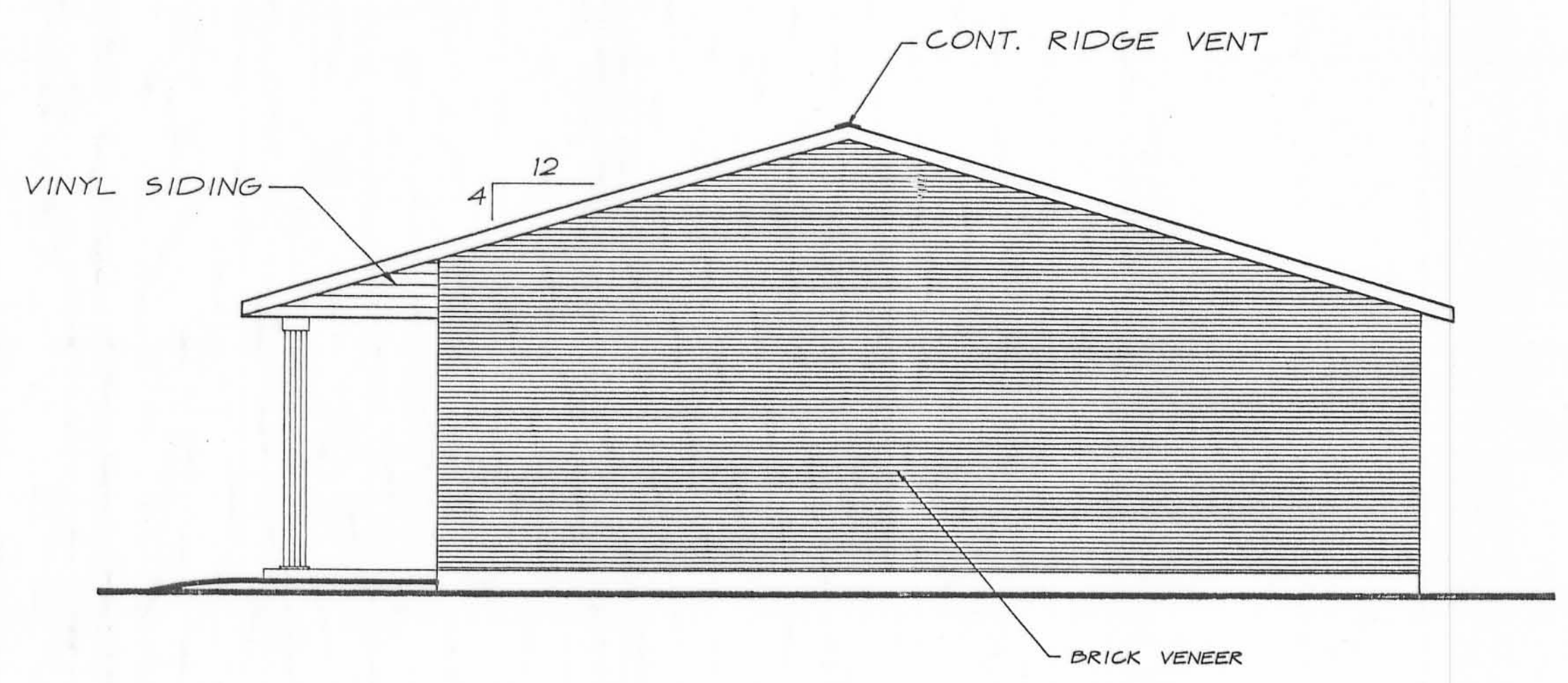
**A-1**

Plat Cab B Slide 38B



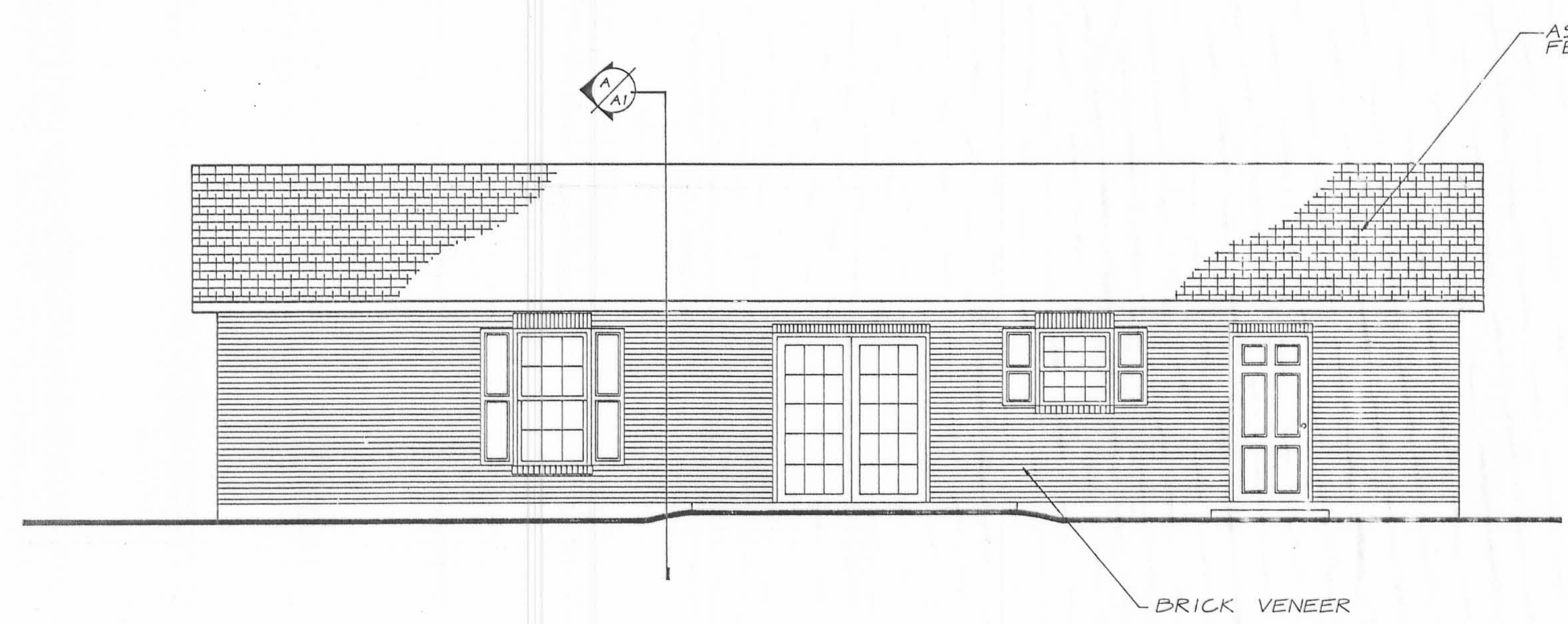
FRONT ELEVATION

SCALE · 1/4" = 1'-0"



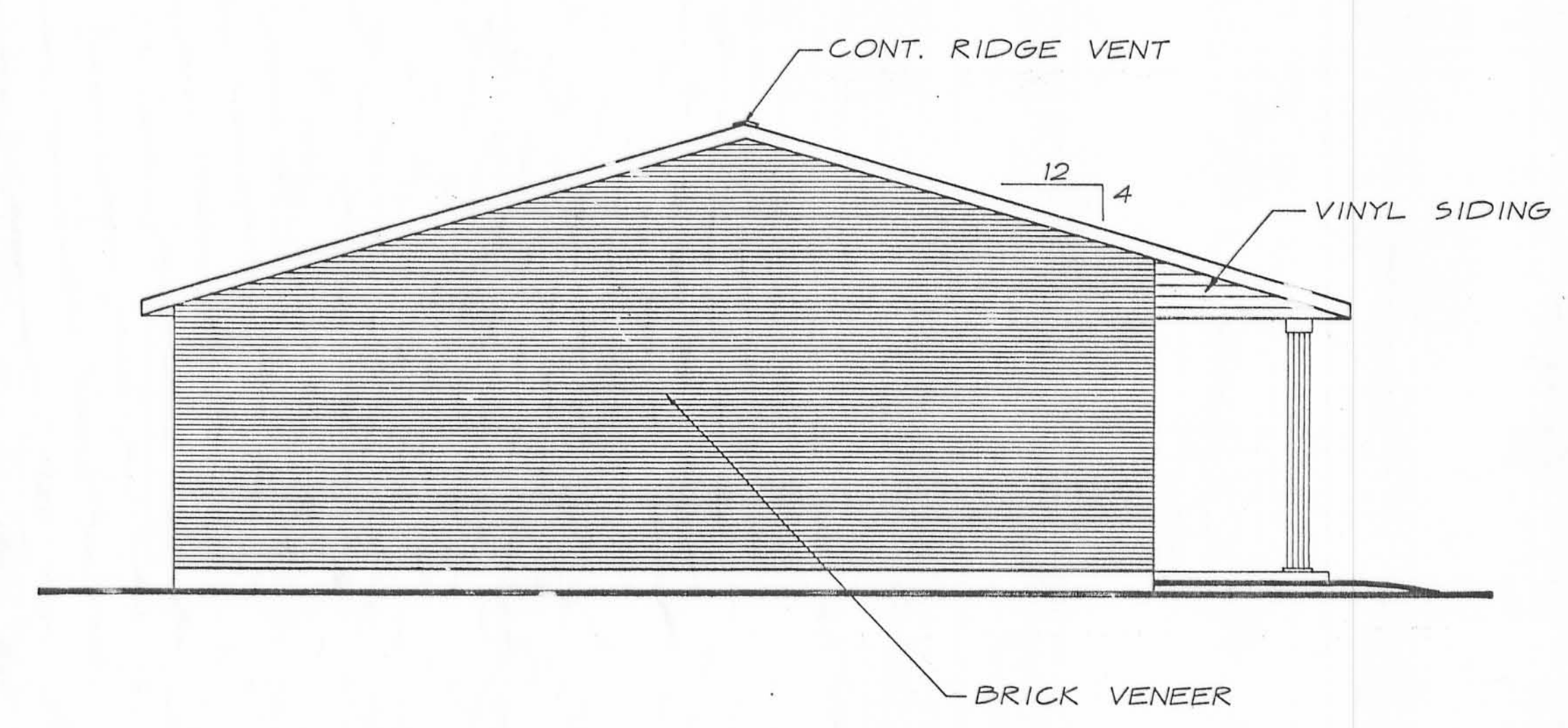
RIGHT SIDE ELEVATION

SCALE · 1/4" = 1'-0"



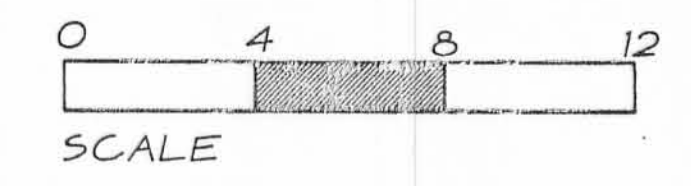
BACK ELEVATION

SCALE · 1/4" = 1'-0"



LEFT SIDE ELEVATION

SCALE · 1/4" = 1'-0"



ARCHITECTURAL STRUCTURES ASSOCIATED  
ARCHITECTS • ENGINEERS • PLANNERS

P.O. BOX 185  
URBANA, OHIO 43078  
P.O. BOX 261  
Piqua, Ohio 45356  
(513) 773-9452

PROJECT NO.	92195
DRAWING TITLE	FLOOR - DWG
REVISIONS	REVISED 8-21-94
DATE	7-26-93

IRON CITY ESTATES  
SPEC HOUSE

DATE 7-26-93

A-2