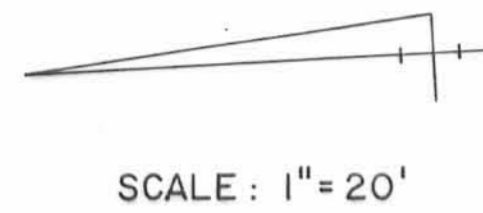
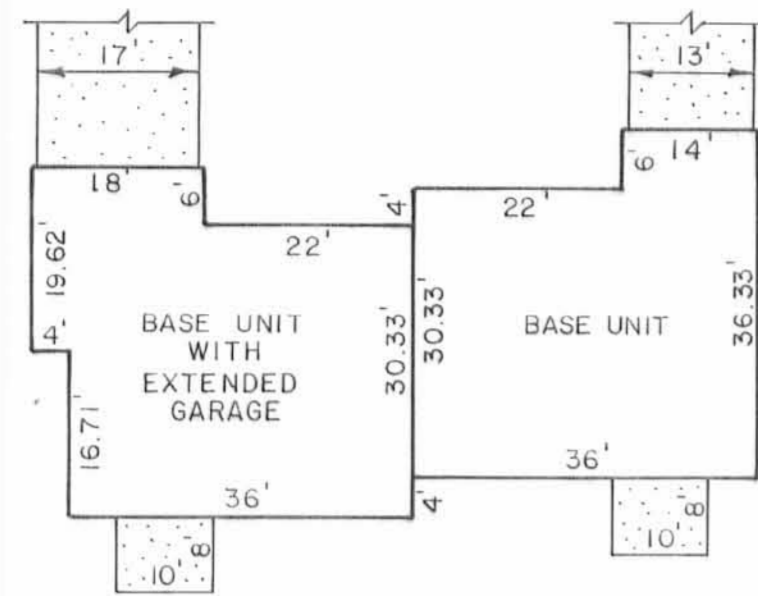


PHASE I CROSS POINTE CONDOMINIUMS

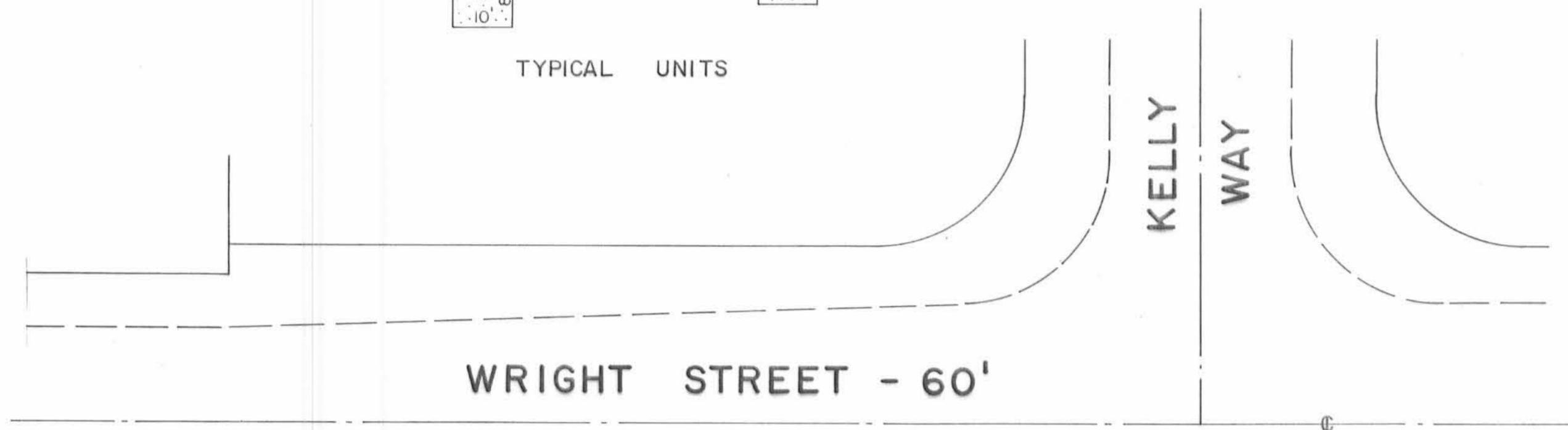
SEC. 33, T. 4, R. 14, LAKE TOWNSHIP
JADO VILLE
BELLEFONTAINE, OHIO



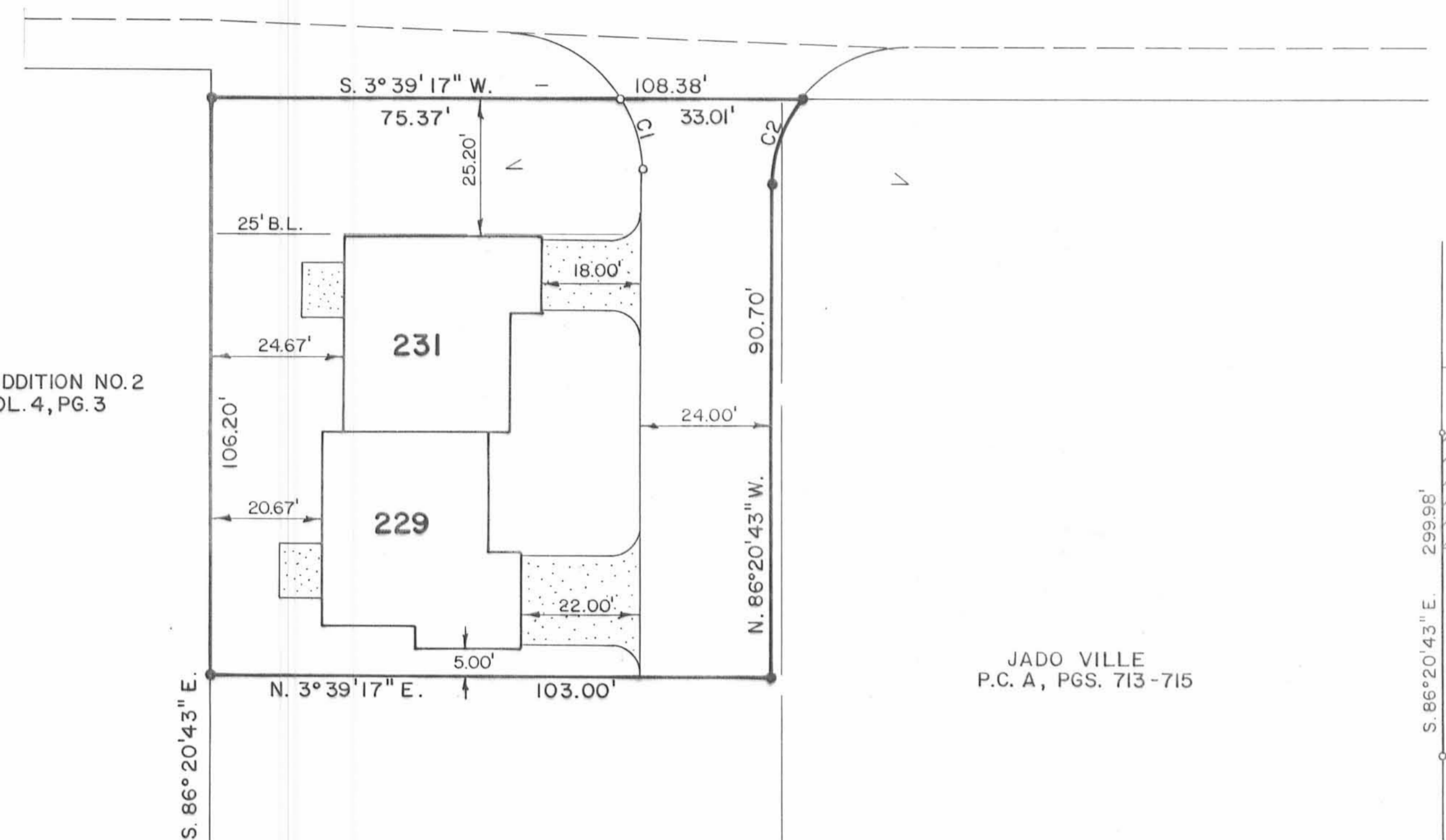
SCALE: 1" = 20'



TYPICAL UNITS



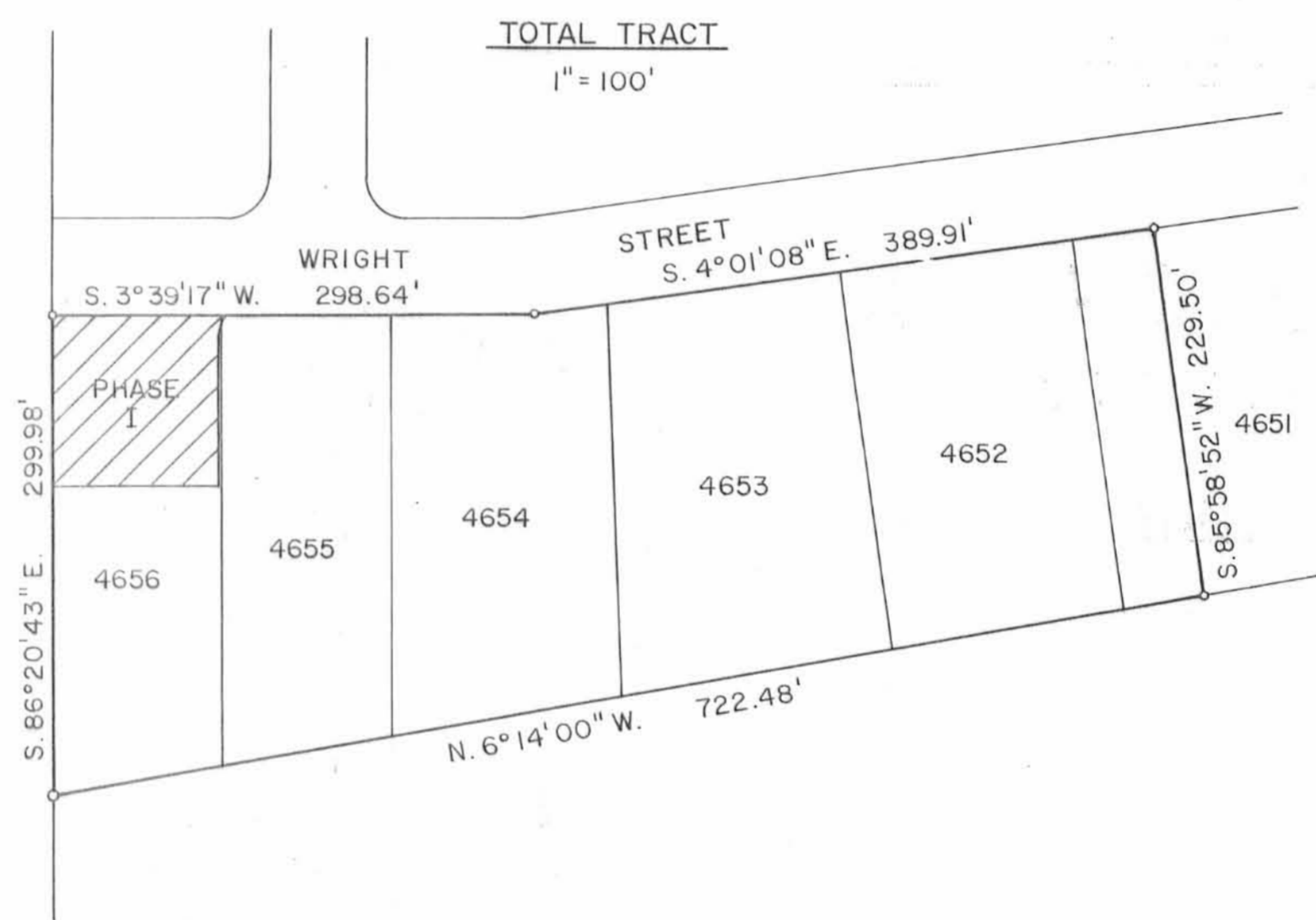
WRIGHT STREET - 60'



SOUTHVIEW ADDITION NO. 2
P.B. D., VOL. 4, PG. 3

JADO VILLE
P.C. A., PGS. 713-715

JADO VILLE
P.C. A., PGS. 713-715



TOTAL TRACT
1" = 100'

LEGEND

- LIMITED COMMON AREA
- ALL AREAS & IMPROVEMENTS NOT LABELED WITH A UNIT DESIGNATION OR AS LIMITED COMMON AREA ARE COMMON AREAS.
- CONCRETE MONUMENT SET
- 5/8 INCH IRON BAR SET
- 231 INDICATES UNIT DESIGNATION

WE DO HEREBY CERTIFY THAT THIS PLAT OF CROSS
POINTE CONDOMINIUM SHOW ALL THE BUILDINGS
AS CONSTRUCTED.



BY: Richard A. Bruce DATE: 9-19-91
RICHARD A. BRUCE
REG. SURVEYOR NO. 6993

BY: Richard A. Bruce DATE: 9-19-91
RICHARD A. BRUCE
PROF. ENGINEER NO. 45325



LEGAL DESCRIPTIONS

TOTAL TRACT

THE FOLLOWING DESCRIBED REAL ESTATE SITUATED IN THE STATE OF OHIO, COUNTY OF LOGAN, TOWNSHIP OF LAKE, CITY OF BELLEFONTAINE, SECTION 33, TOWN 4, RANGE 14, AND BEING PART OF LOTS 4652, 4653, 4654, 4655, 4656 AND THE NORTH 50 FEET OF LOT 4651 OF JADO VILLE AS RECORDED IN PLAT CABINET A, PAGES 713-715.

PHASE I - NO. 229 & 231

THE FOLLOWING DESCRIBED REAL ESTATE SITUATED IN THE STATE OF OHIO, COUNTY OF LOGAN, TOWNSHIP OF LAKE, CITY OF BELLEFONTAINE, SECTION 33, TOWN 4, RANGE 14 AND BEING PART OF LOTS 4655 AND 4656 OF JADO VILLE AS RECORDED IN PLAT CABINET A, PAGES 713-715 AND MORE PARTICULARLY DESCRIBED AS FOLLOWS:

COMMENCING AT A CONCRETE MONUMENT SET MARKING THE NORTHWEST CORNER OF LOT 4656.

THENCE, WITH THE NORTH LINE OF LOT 4656, S. 86° 20' 43" E. 193.78 FEET TO A 5/8 INCH IRON BAR SET, SAID IRON BAR BEING THE TRUE POINT OF BEGINNING OF THIS DESCRIPTION.

THENCE, CONTINUING WITH THE NORTH LINE OF LOT 4656, S. 86° 20' 43" E. 106.20 FEET TO A 5/8 INCH IRON BAR SET MARKING THE NORTHWEST CORNER OF LOT 4656.

THENCE, WITH THE EAST LINE OF LOT 4656, ALSO THE WEST LINE OF WRIGHT STREET, S. 3° 39' 17" W. 108.38 FEET TO A 5/8 INCH IRON BAR SET.

THENCE, WITH A CURVE TO THE LEFT, A CHORD DISTANCE OF 16.41 FEET AND A CHORD BEARING OF N. 67° 11' 14" W. TO A 5/8 INCH IRON BAR SET, SAID CURVE HAVING A RADIUS OF 25.00 FEET, A DELTA OF 38° 18' 58", AN ARC LENGTH OF 16.72 FEET AND A TANGENT OF 8.69 FEET.

THENCE, N. 86° 20' 43" W. 90.70 FEET TO A 5/8 INCH IRON BAR SET.

THENCE, N. 3° 39' 17" E. 103.00 FEET TO THE POINT OF BEGINNING.

CONTAINING 10,965 SQUARE FEET OR 0.252 ACRES, MORE OR LESS, OF WHICH 8.7 SQUARE FEET ARE CONTAINED IN LOT 4655 AND 10,956.3 SQUARE FEET ARE CONTAINED IN LOT 4656.

BASIS FOR BEARING: CENTERLINE OF WRIGHT STREET (S. 3° 39' 17" W.).

THIS DESCRIPTION PREPARED FROM AN ACTUAL FIELD SURVEY.

PREAPPROVAL for this 10-2-91
PLAT CHECKED for this 10-4-91

APPROVED BY THE BELLEFONTAINE PLANNING
COMMISSION THIS 3 DAY OF October,
1991.

Forthy L. N...
CLERK, PLANNING COMMISSION

TRANSFERRED THIS 4th DAY OF OCTOBER,
1991.
Joan Jones
AUDITOR, LOGAN COUNTY, OHIO

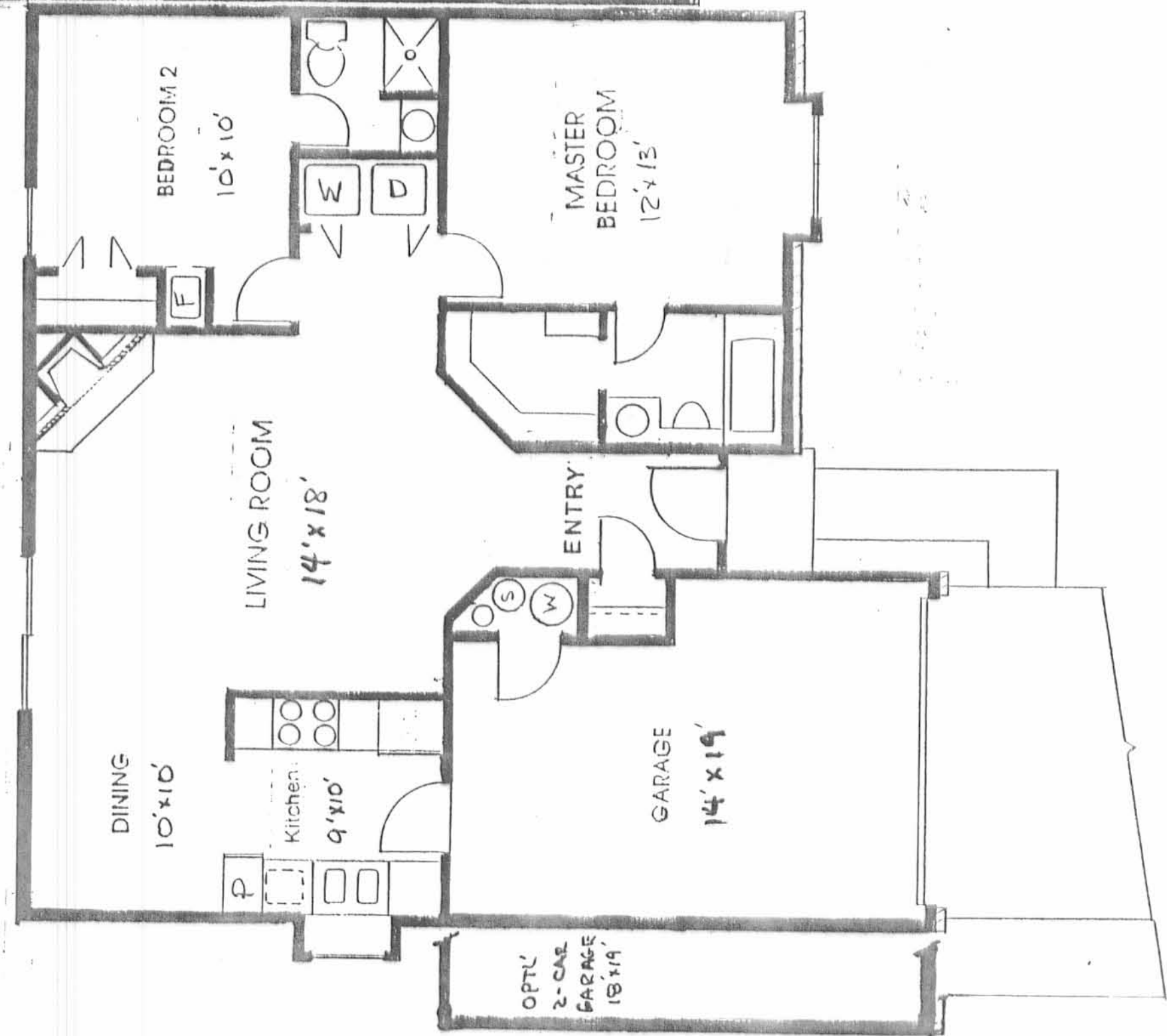
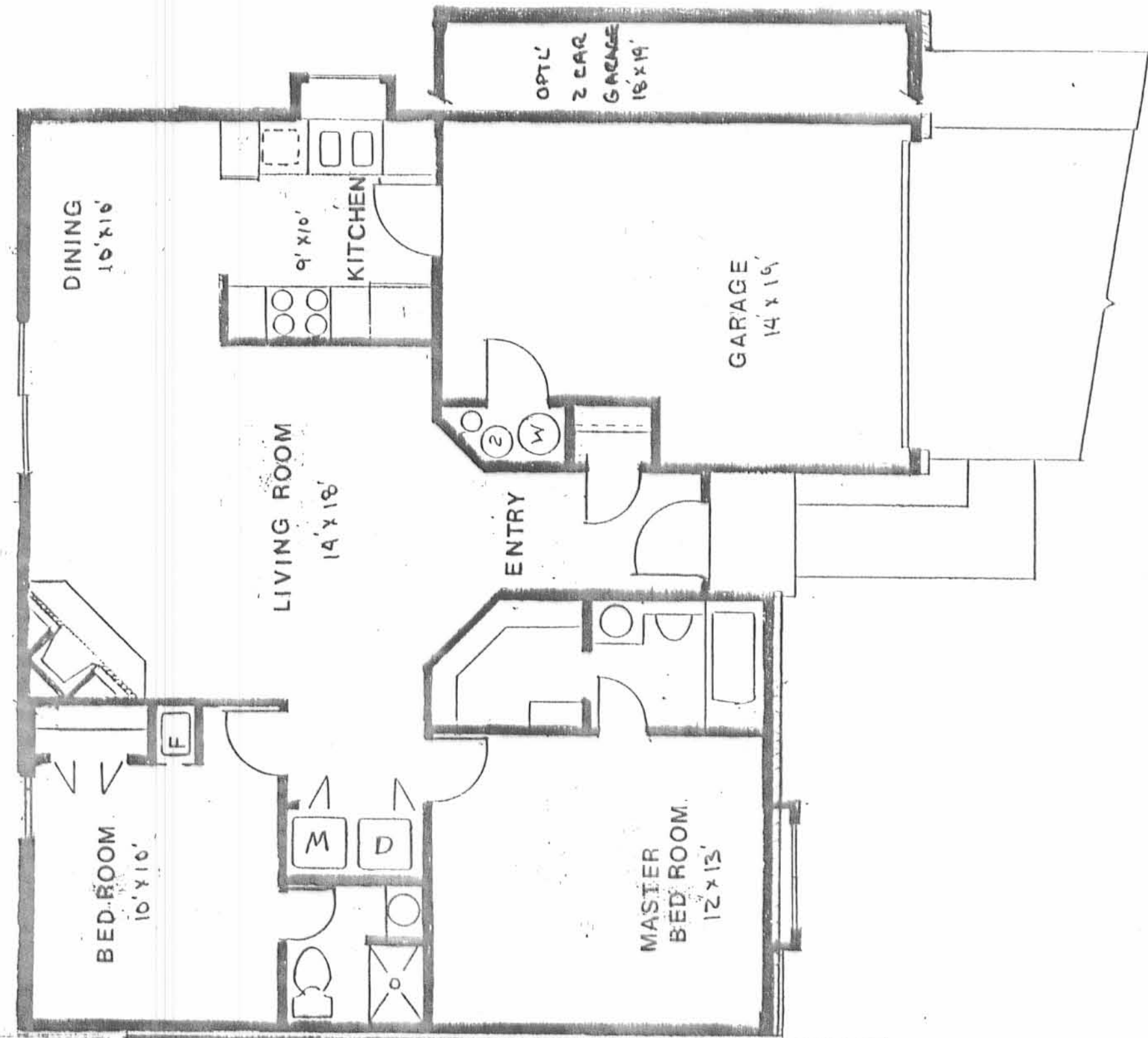
RECORDED IN PLAT CABINET "A",
SLIDE 729B; 731A, RECEIVED FOR RECORD
AT 1:14 O'CLOCK P.M. THIS 4th DAY OF
OCTOBER, 1991.
Carolyn Collins
RECORDER, LOGAN COUNTY, OHIO

NOTE: AT THE DATE OF THIS PLAT UNITS WERE UNDER CONSTRUCTION.

COPY OF ORIGINAL

PLAT CABINET "A" SLIDE 730 A

2
2



TYPICAL Condo - Unit

