

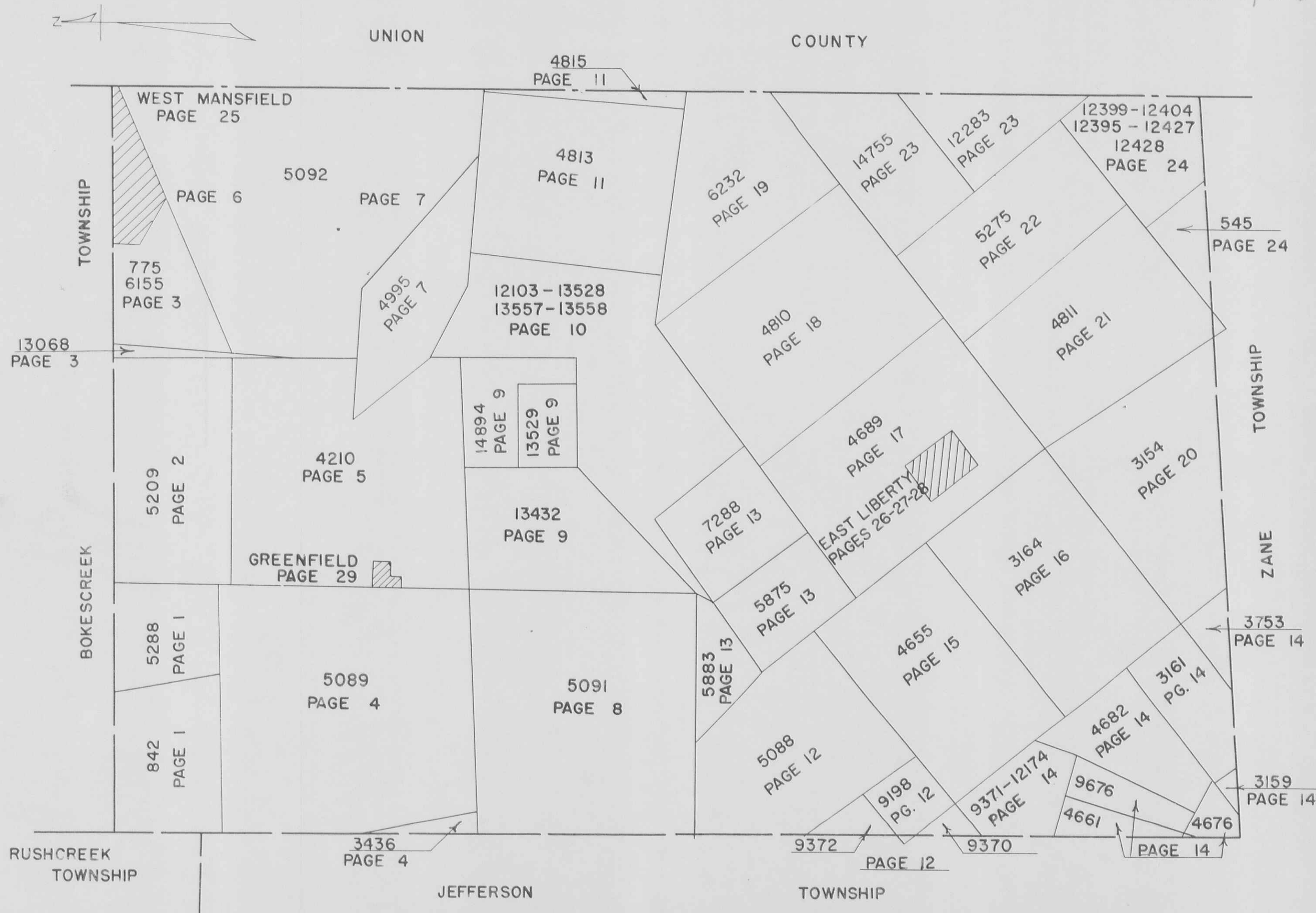
**PERRY**

**TOWNSHIP**

**1966**

INDEX MAP  
VIRGINIA MILITARY SURVEY

CORRECTED TO  
January 1, 1966  
JANUARY 1, 1967  
JANUARY 1, 1968  
JANUARY 1, 1969



INDEX

VIRGINIA MILITARY SURVEYS

V.M.S.	PAGE	V.M.S.	PAGE	V.M.S.	PAGE
545	24	4815	11	9372	12
775	3	4995	7	9676	14
842	1	5088	12	12103	10
3154	20	5089	4	12174	14
3159	14	5091	8	12283	23
3161	14	5092-North Part	6	12395	24
3164	16	5092-South Part	7	12399	24
3436	4	5209	2	12404	24
3753	14	5275	22	12427	24
4210	5	5288	1	12428	24
4655	15	5875	13	13068	3
4661	14	5883	13	13432	9
4676	14	6155	3	13528	10
4682	14	6232	19	13529	9
4689	17	7288	13	13557	10
4810	18	9198	12	13558	10
4811	21	9370	12	14775	23
4813	11	9371	14	14894	9

VILLAGE OR TOWN	PAGE
EAST LIBERTY-North East Part	26
EAST LIBERTY-North West Part	27
EAST LIBERTY-South Part	28
GREENFIELD LOTS	29
WEST MANSFIELD CORPORATION	25

SCALE 10 CHAINS TO THE INCH

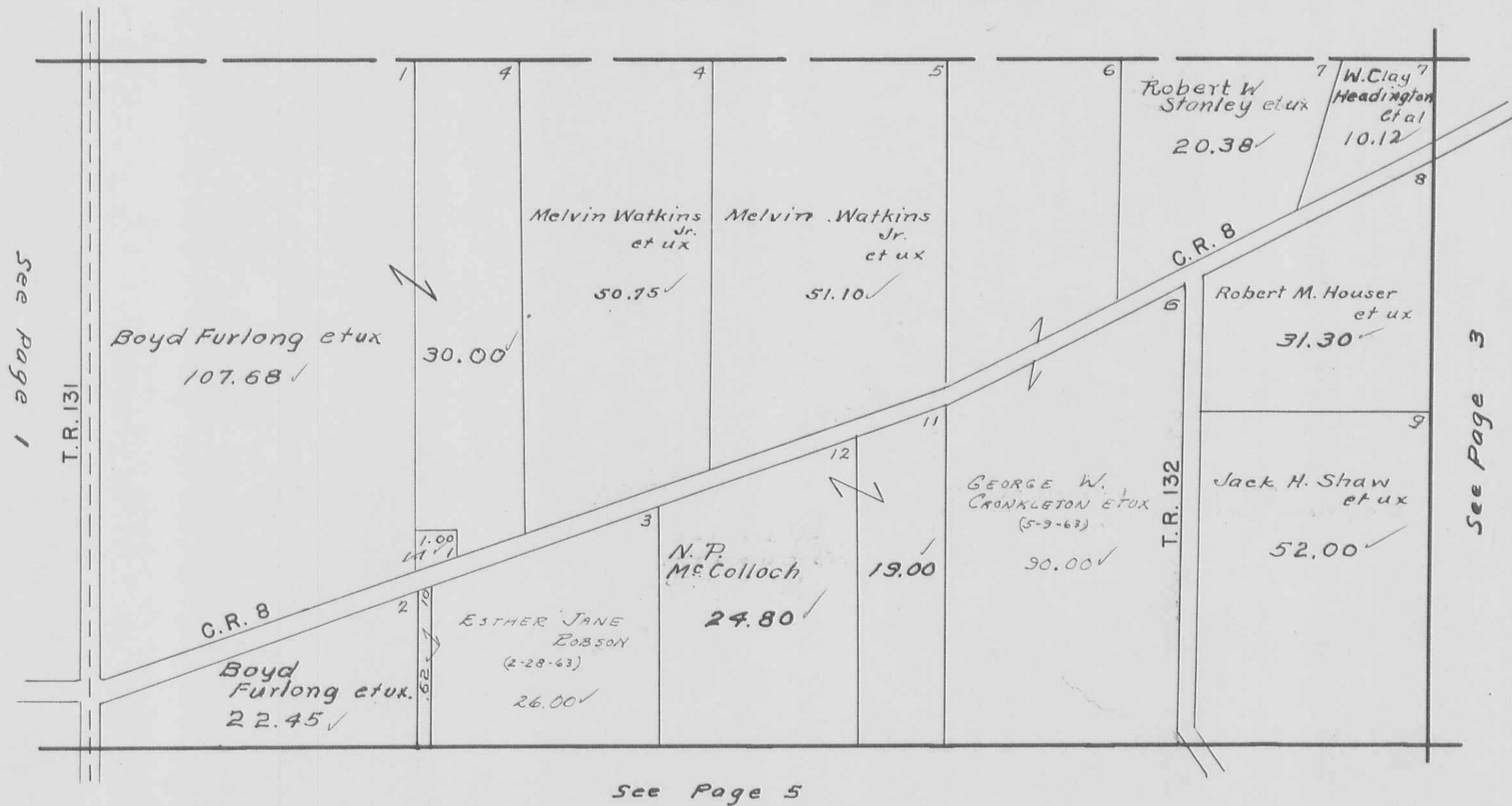
BOKESCREEK TOWNSHIP





SCALE 10 CHAINS TO THE INCH

BOKESCREEN TOWNSHIP

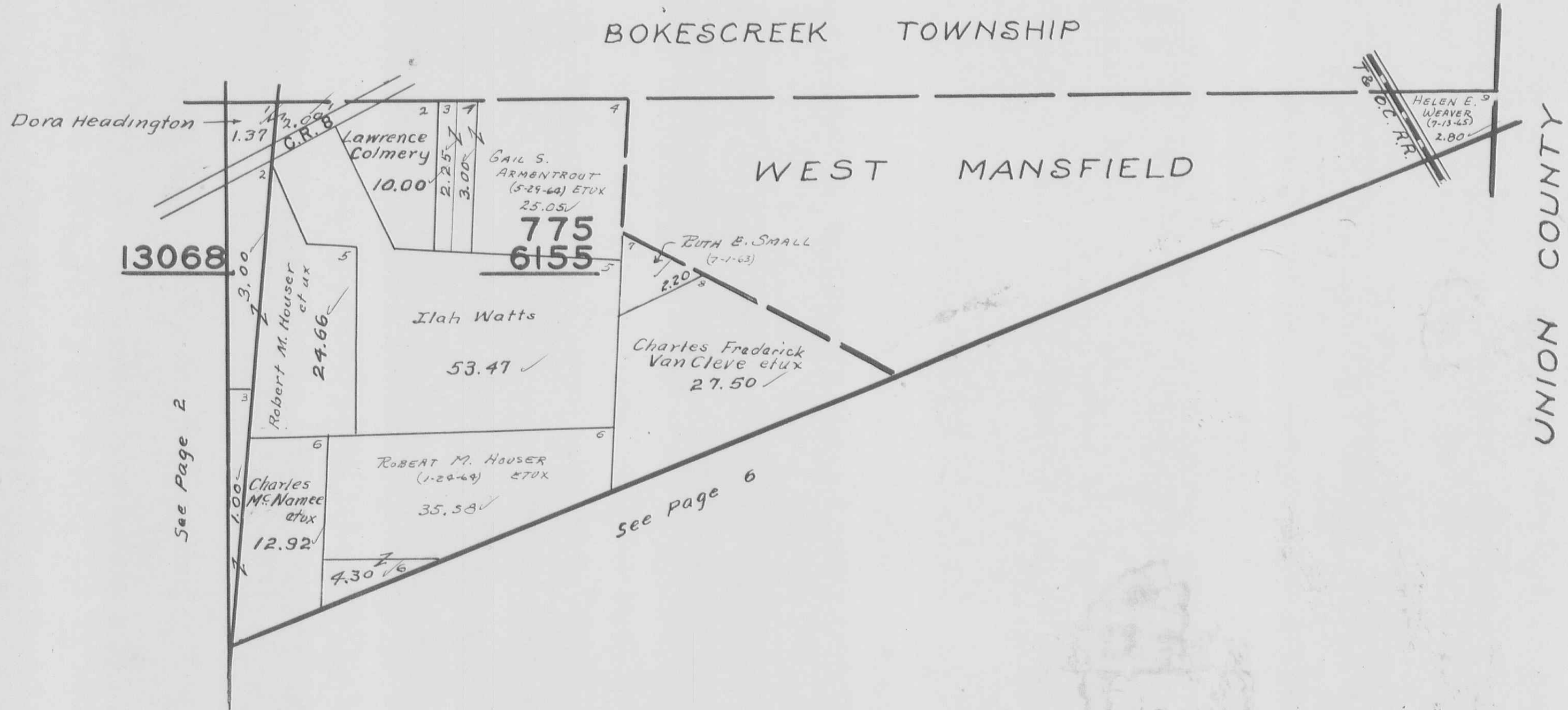


PERRY TOWNSHIP  
VIRGINIA MILITARY SURVEYS

775  
6155  
13068

SCALE 10 CHAINS TO THE INCH

BOKESCREEK TOWNSHIP



VIRGINIA

MILITARY

SURVEYS

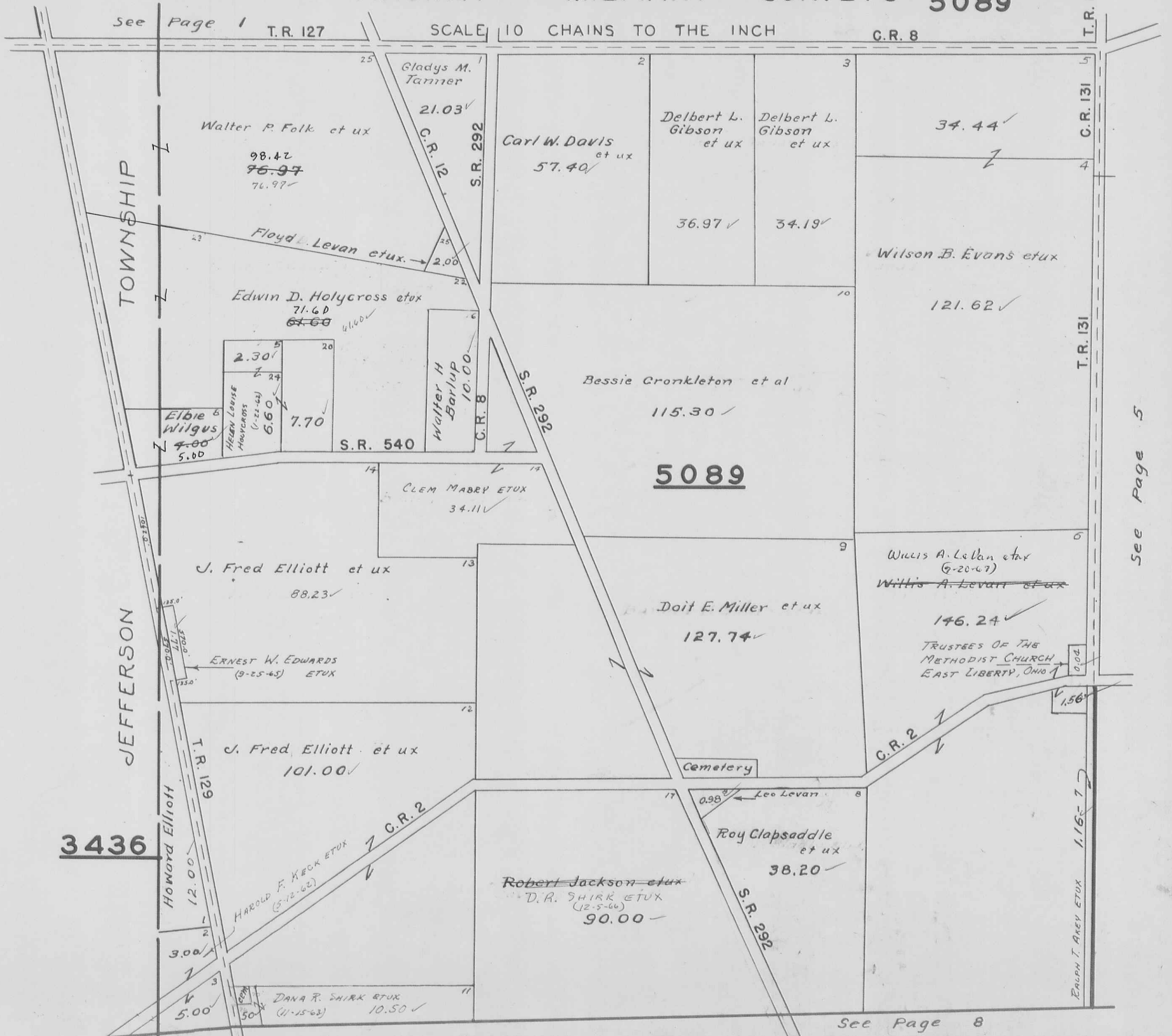
3436  
5089

See Page 1 T.R. 127

SCALE 10 CHAINS TO THE INCH

C.R. 8

T.R. 131



See Page 5

See Page 8







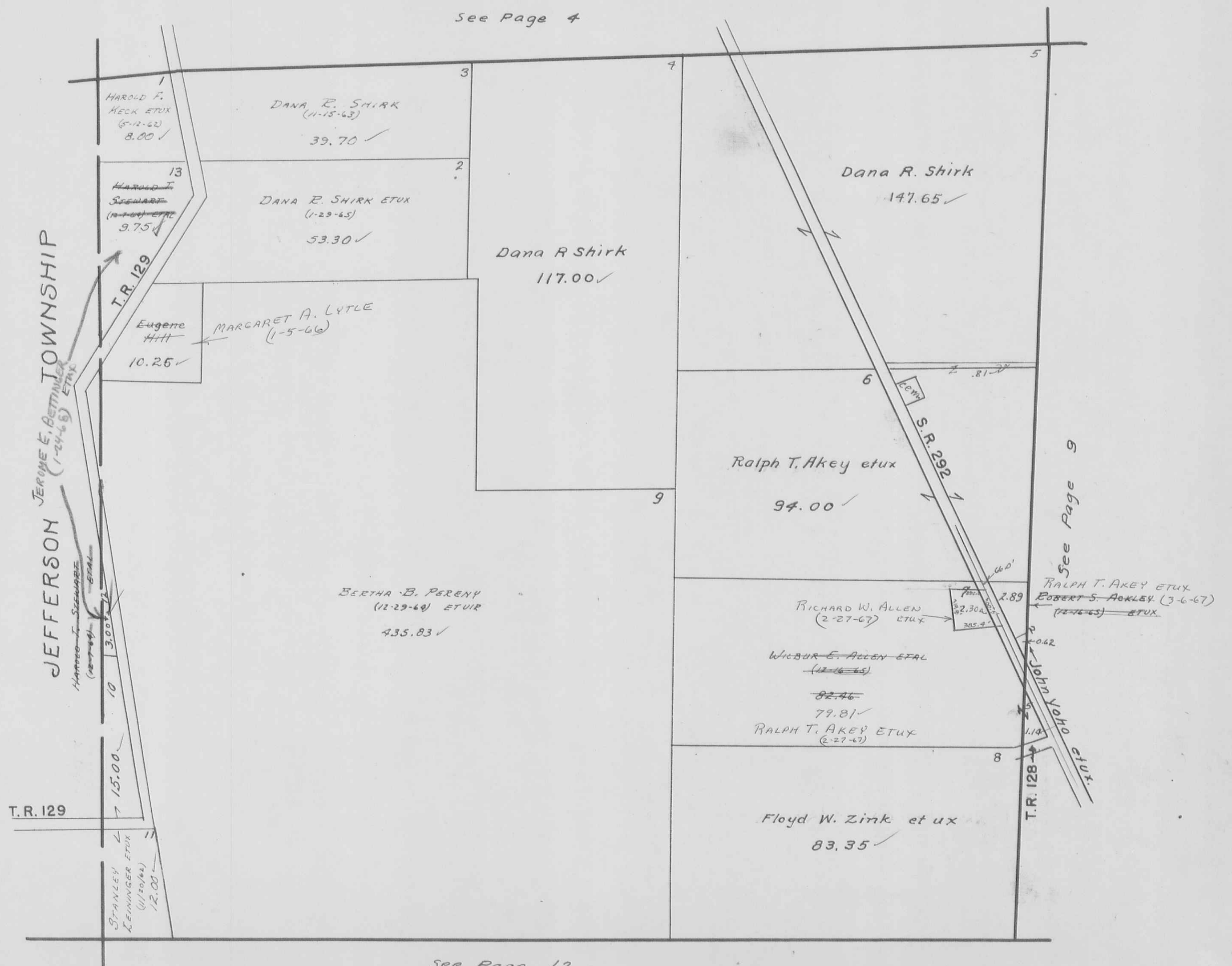




PERRY TOWNSHIP  
 VIRGINIA MILITARY SURVEY 5091

SCALE 10 CHAINS TO THE INCH

See Page 4



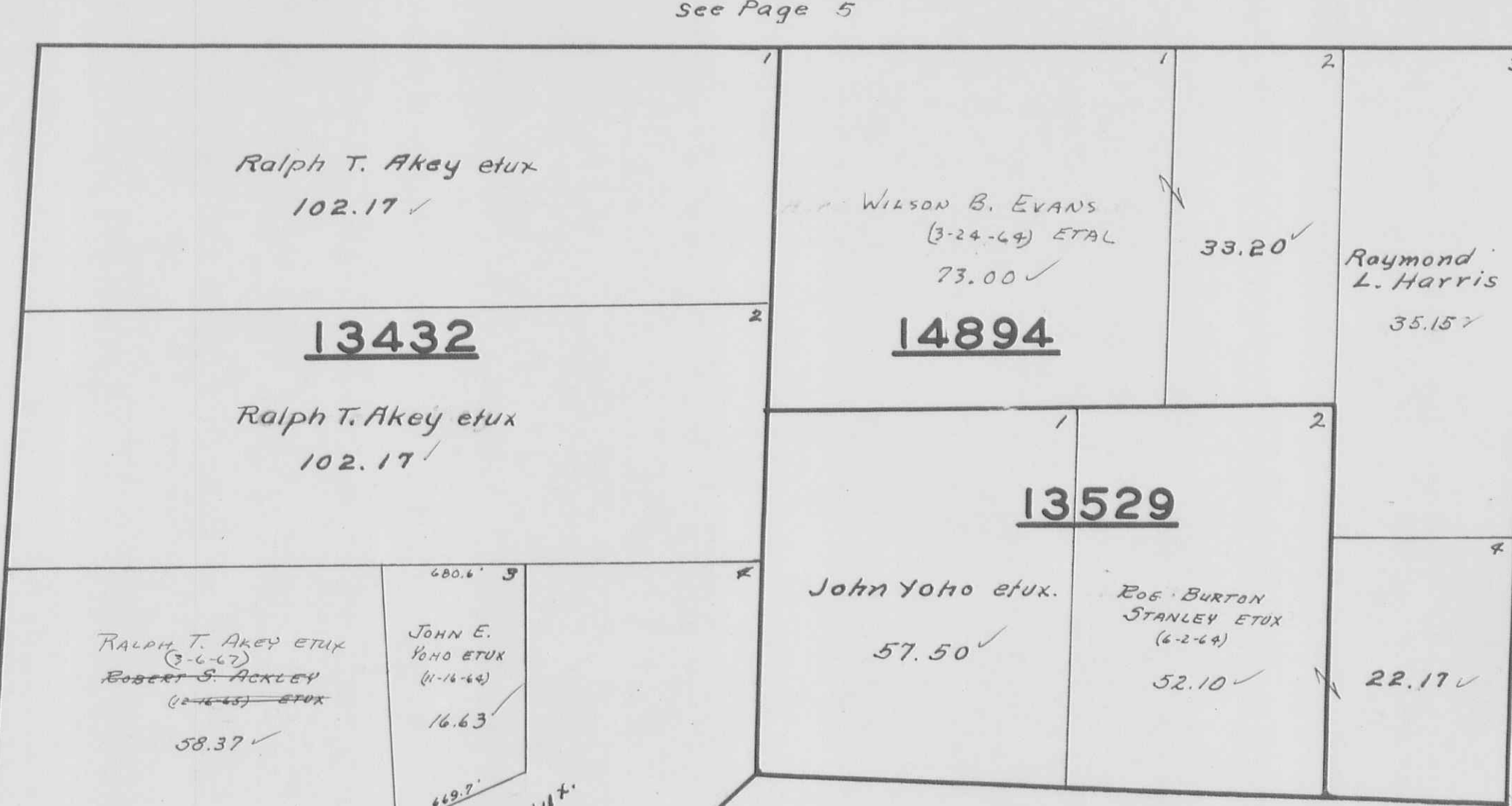
See Page 12

PERRY TOWNSHIP  
VIRGINIA MILITARY SURVEYS

13432 PAGE 9  
13529  
14894

SCALE 10 CHAINS TO THE INCH

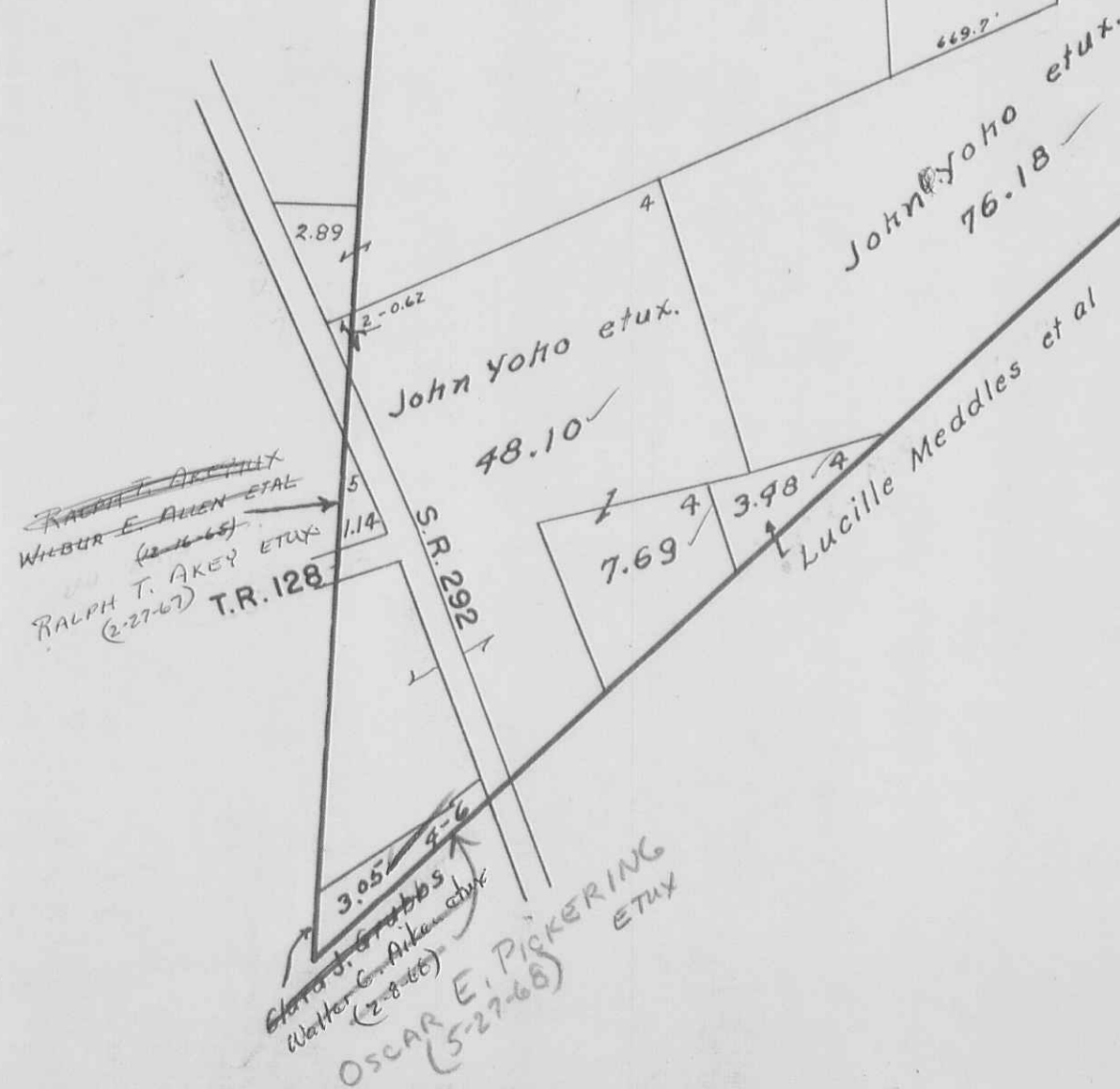
See Page 5



See Page 8

See Page 10

See Page 10





PERRY TOWNSHIP  
VIRGINIA MILITARY SURVEYS

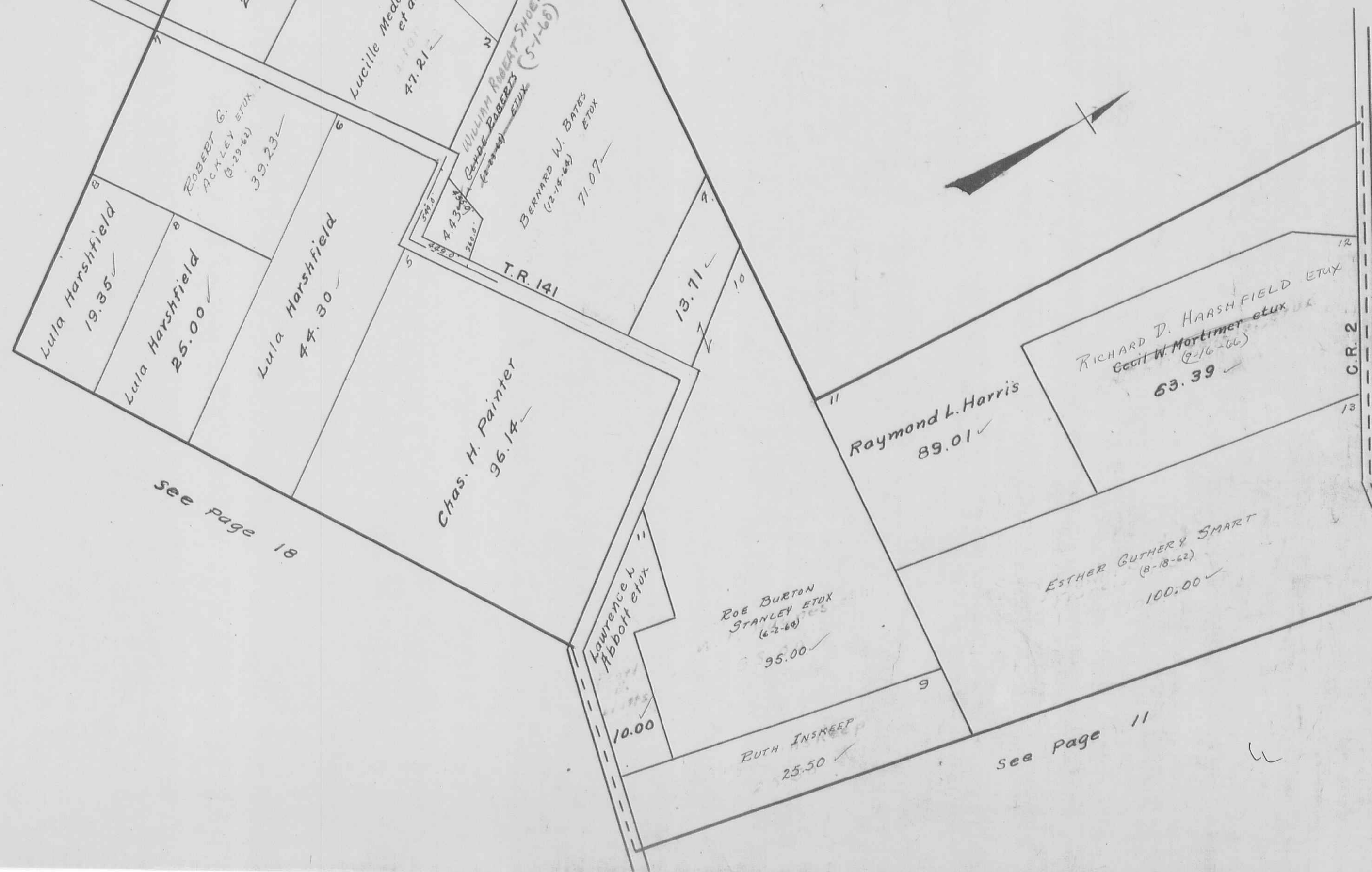
12103  
13528  
13557  
13558

SCALE 10 CHAINS TO THE INCH

HERMAN W. LAUTENBACH ETUX  
(6-17-68)  
John Yoho etux  
Lucille Meadles et al  
26.00  
16.75  
24.00  
7.93  
2.62  
4.71  
2.40  
SR. 292  
Lucille Meadles et al  
47.21  
John Yoho etux  
19.47

See Page 9

See Page 13



see page 18

See Page 7

see Page 11

PERRY TOWNSHIP  
 VIRGINIA MILITARY SURVEYS 4813 4815  
 SCALE 10 CHAINS TO THE INCH



See Page 10

UNION COUNTY

UNION

**4813**

**4815**

Bernard  
Wilgus  
et ux  
78.07

Foy D. Bushong  
et ux  
74.20

HARLEY H.  
LANE ETUX  
(8-23-63)  
40.00

Marie  
Johnson  
76.47

Wilson B.  
Evans et al  
40.00

11.00

John H. Hatcher et ux  
52.53

3.80

RUTH  
INSKEEP  
67.75

ROBERT L. McCULLOCH  
(9-22-65) ETUX  
96.25

ROY LAVERN ASBURY  
(1-13-66) ETUX  
Lloyd Davis  
et ux  
62.00

CHESTER POTE  
CHESTER A. POTE  
(4-7-67) ETUX  
57.57

Harold E. Longbrake et ux  
33.57

16.89

2.07



PERRY TOWNSHIP  
VIRGINIA MILITARY SURVEYS

5088  
9198  
9370  
9372

SCALE 10 CHAINS TO THE INCH

22-11  
11-12  
90-13  
24  
24  
86-71  
52-77  
10-61  
34-76



See Page 8

See Page 13

See Page 15

JEFFERSON

TOWNSHIP

9372

9370

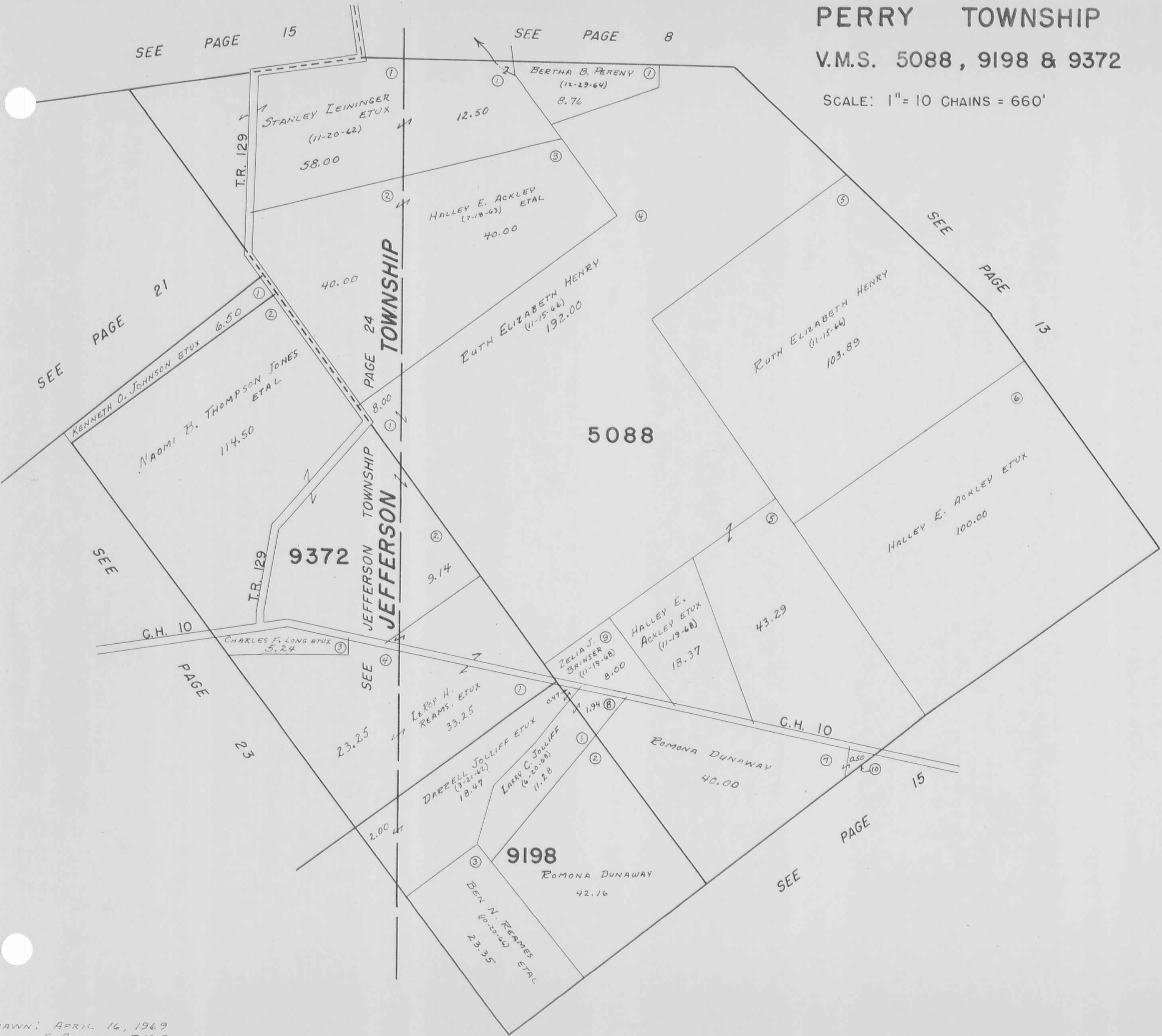
5088

9198

# PERRY TOWNSHIP

V.M.S. 5088, 9198 & 9372

SCALE: 1" = 10 CHAINS = 660'









PERRY TOWNSHIP  
 VIRGINIA MILITARY SURVEY 4655

SCALE 10 CHAINS TO THE INCH



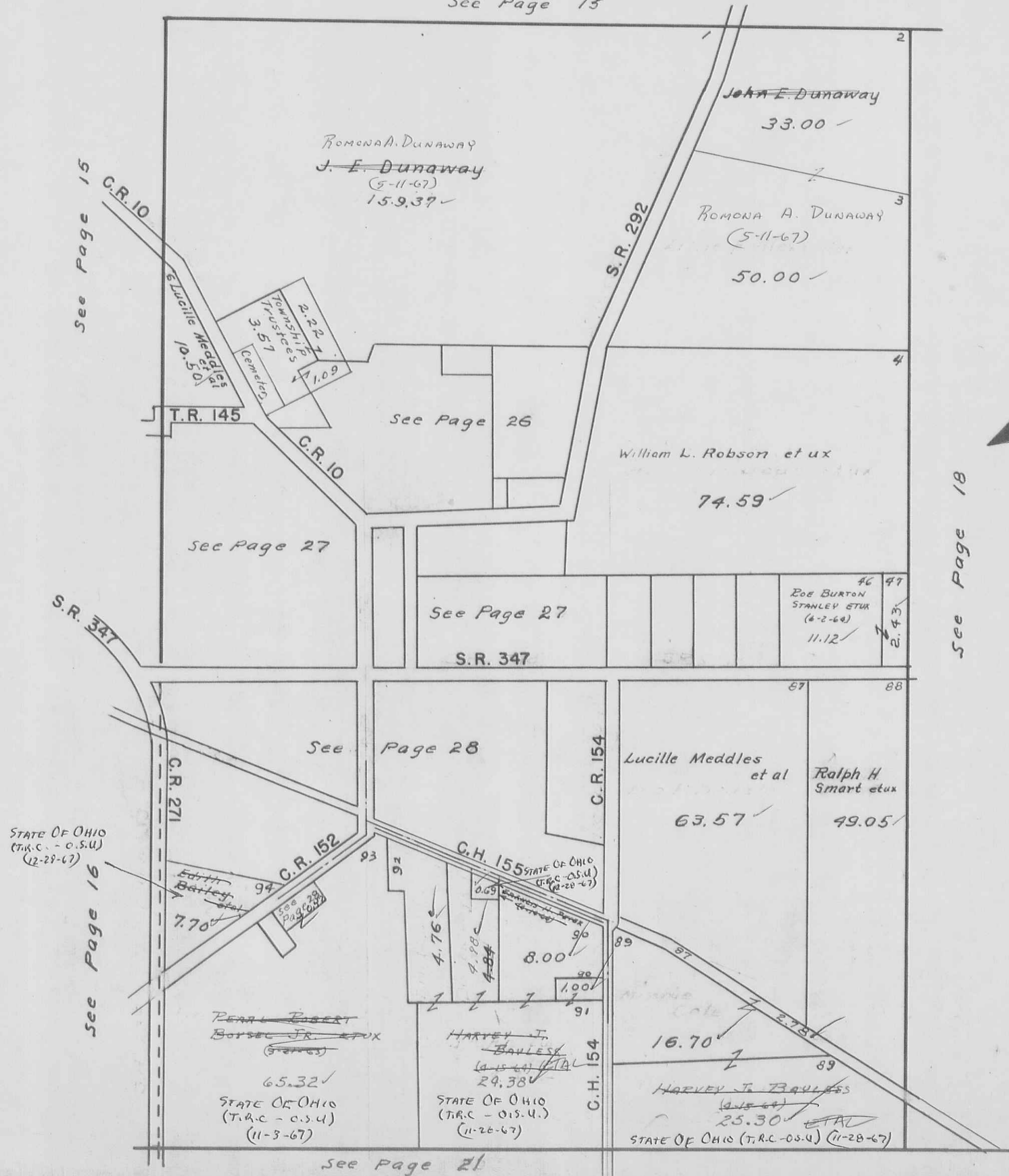




PERRY TOWNSHIP  
 VIRGINIA MILITARY SURVEY 4689

SCALE 10 CHAINS TO THE INCH

See Page 15

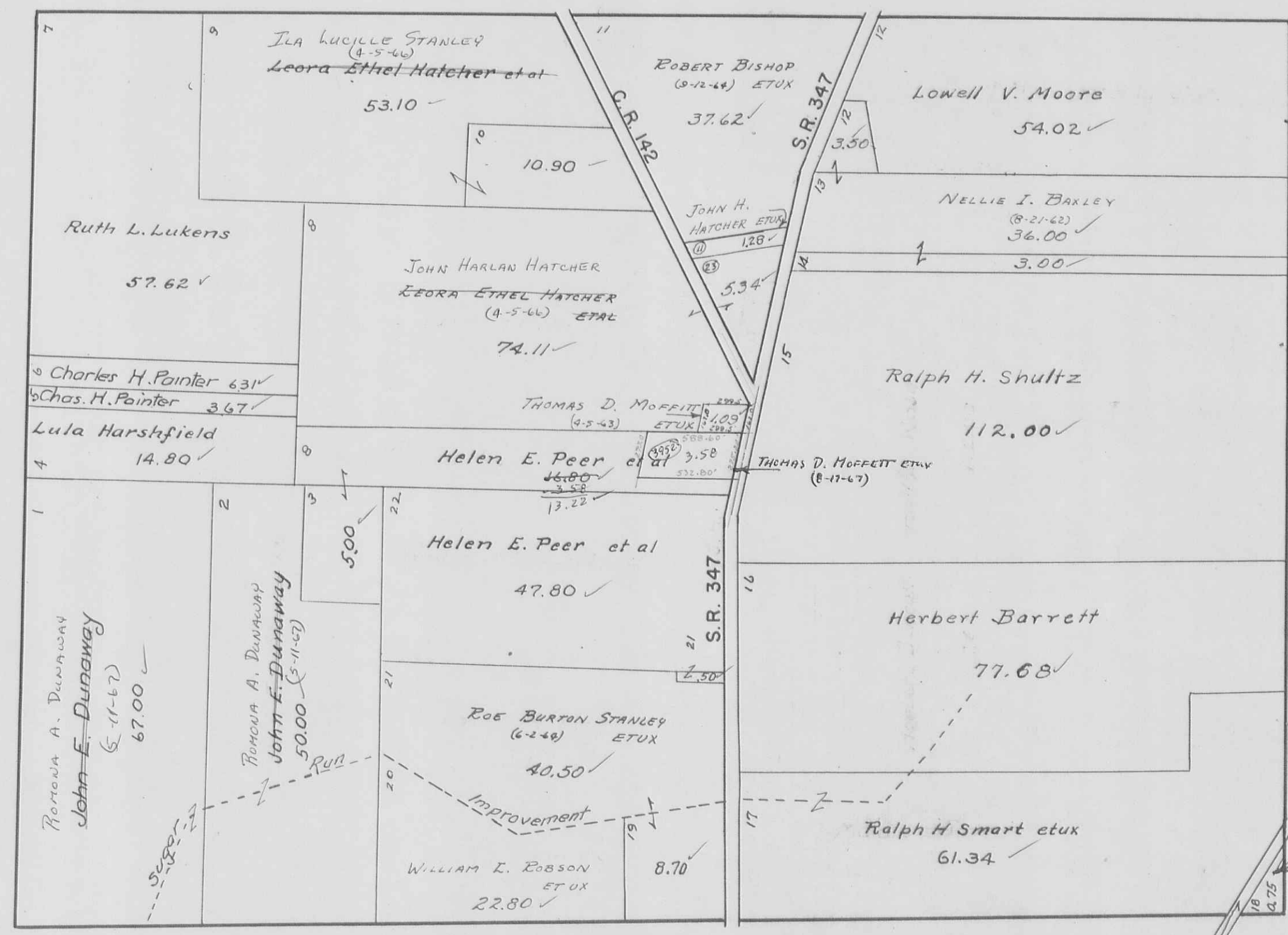




PERRY TOWNSHIP  
VIRGINIA MILITARY SURVEY 4810

SCALE 10 CHAINS TO THE INCH

See Page 19

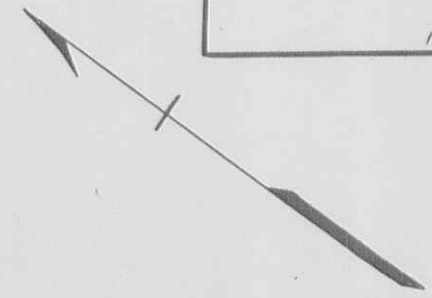


See Page 10

See Page 23

HARVEY J. BAULES  
(8-15-68) ETAL  
STATE OF OHIO - (P.A.C. - 01514)  
(11-26-67)  
See Page 22

See Page 17



PERRY TOWNSHIP  
VIRGINIA MILITARY SURVEY 6232

SCALE 10 CHAINS TO THE INCH







VIRGINIA

MILITARY

SURVEY

4811

SCALE 10 CHAINS TO THE INCH



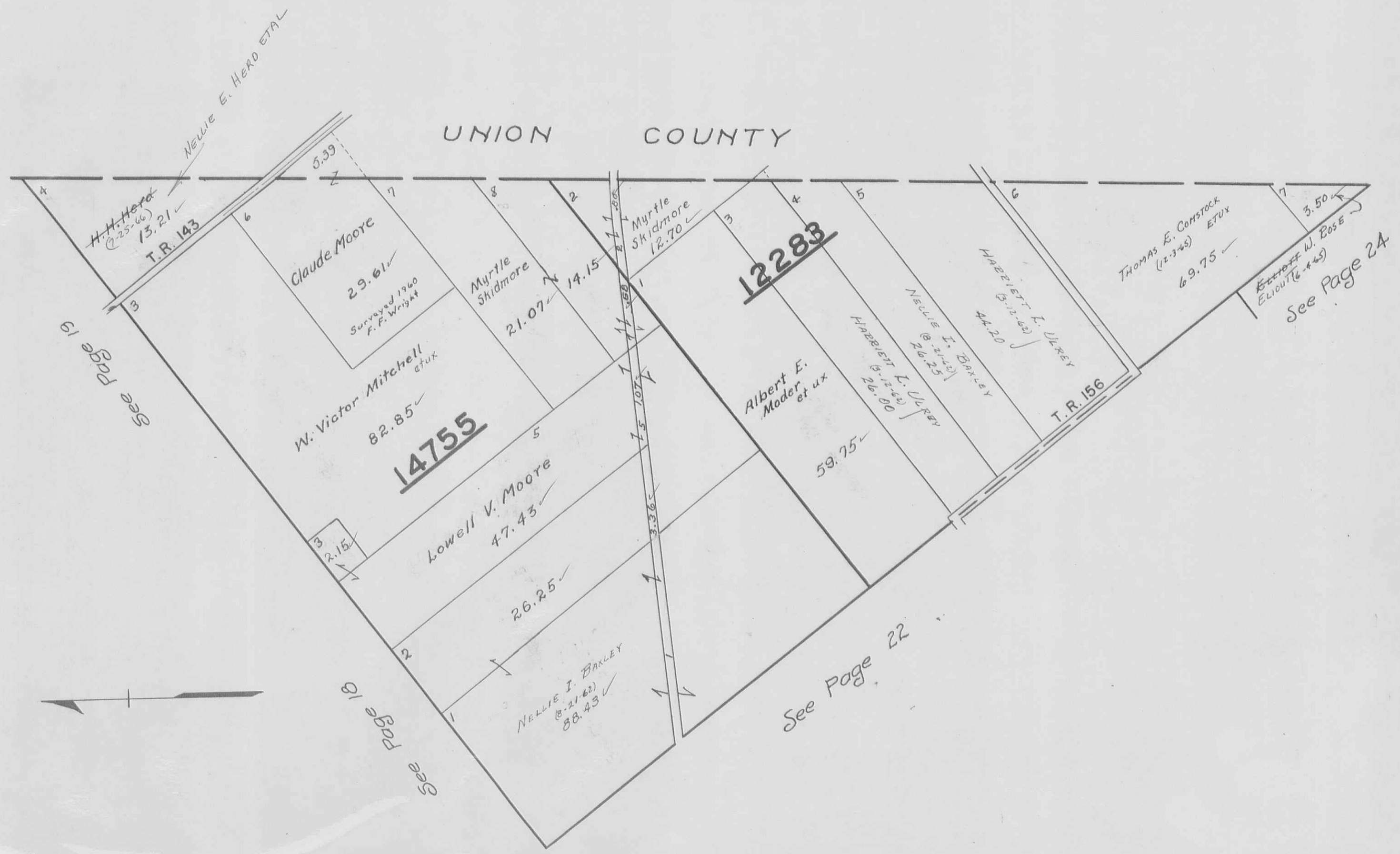
PERRY TOWNSHIP  
VIRGINIA MILITARY SURVEY 5275  
SCALE 10 CHAINS TO THE INCH



PERRY TOWNSHIP  
VIRGINIA MILITARY SURVEYS  
SCALE 10 CHAINS TO THE INCH

12283  
14755

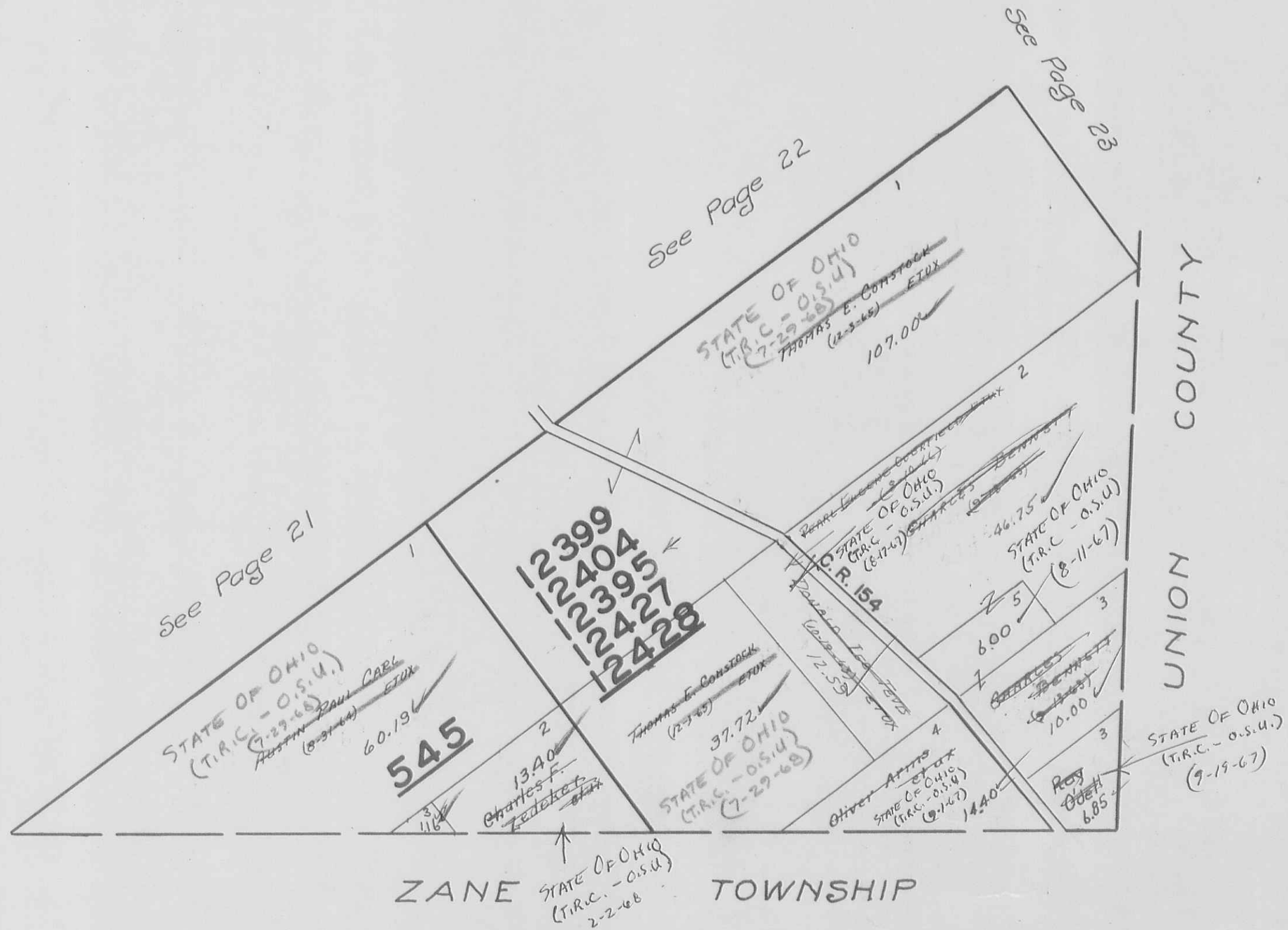
UNION COUNTY



PERRY TOWNSHIP  
VIRGINIA MILITARY SURVEYS

SCALE 10 CHAINS TO THE INCH

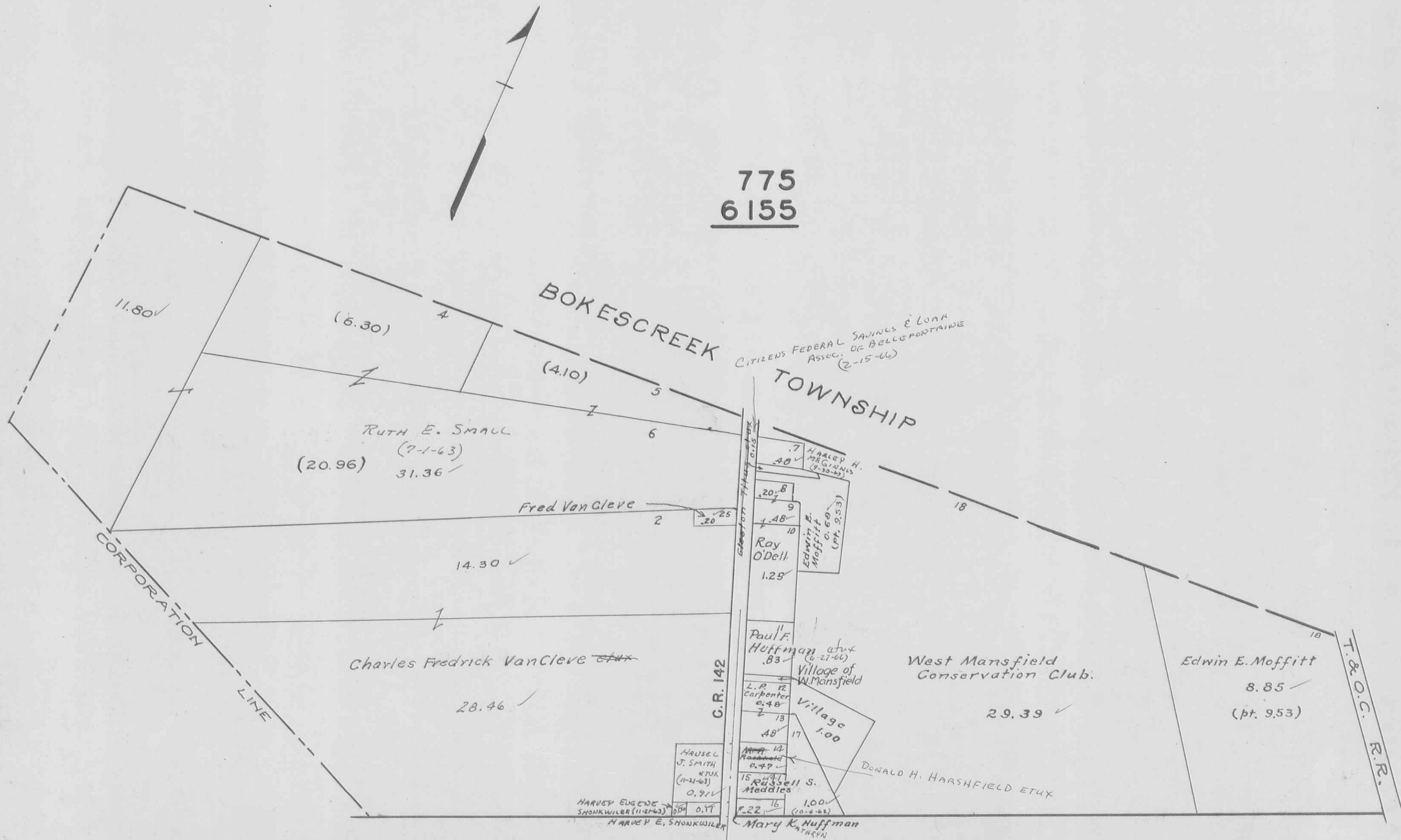
545  
12399  
12404  
12395  
12427  
12428





PERRY TOWNSHIP  
 WEST MANSFIELD CORPORATION

SCALE 300 FEET TO THE INCH



775  
 6155

CITIZENS FEDERAL SAVINGS & LOAN ASSOC. OF BELLEFONTAINE (2-15-66)

BOKESCREEK TOWNSHIP

C.G.R. 142

See Page 6

CORPORATION LINE

T. & O.C. R.R.

RUTH E. SMALL  
 (7-1-63)  
 (20.96) 31.36 ✓

Fred VanCleve

Charles Fredrick VanCleve

HALEY H. GINNIS (8-30-63)

Edwin E. Moffitt (pt. 9.53)

Paul F. Huffman et ux (6-27-66)  
 Village of W. Mansfield

HAUSEL J. SMITH et ux (11-21-63)

HARVEY EUGENE SHONKWILER (11-24-63)

Mary K. Huffman

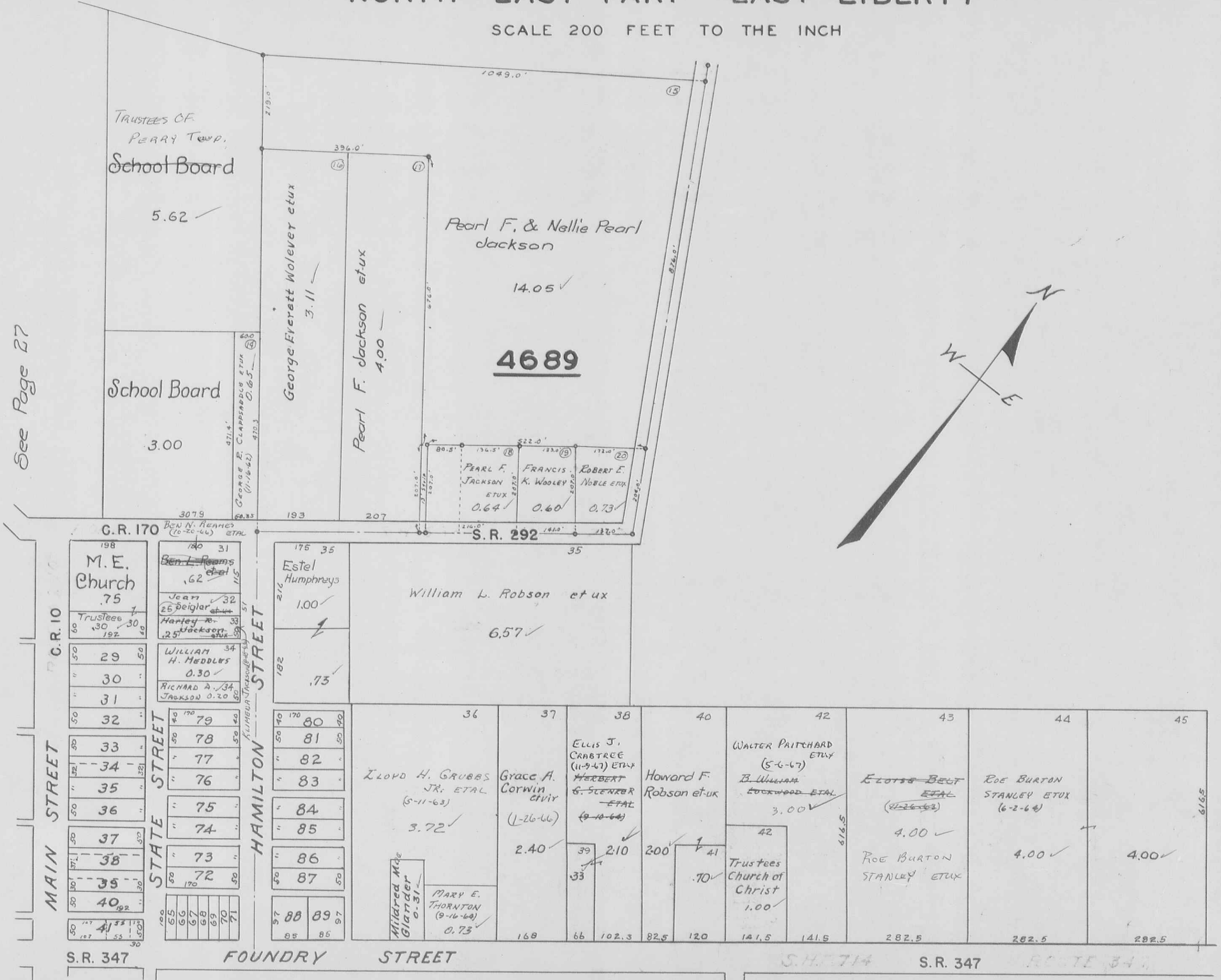
West Mansfield Conservation Club

Edwin E. Moffitt  
 8.85 ✓  
 (pt. 9.53)

DONALD H. HARSHFIELD ETUX

NORTH EAST PART EAST LIBERTY

SCALE 200 FEET TO THE INCH

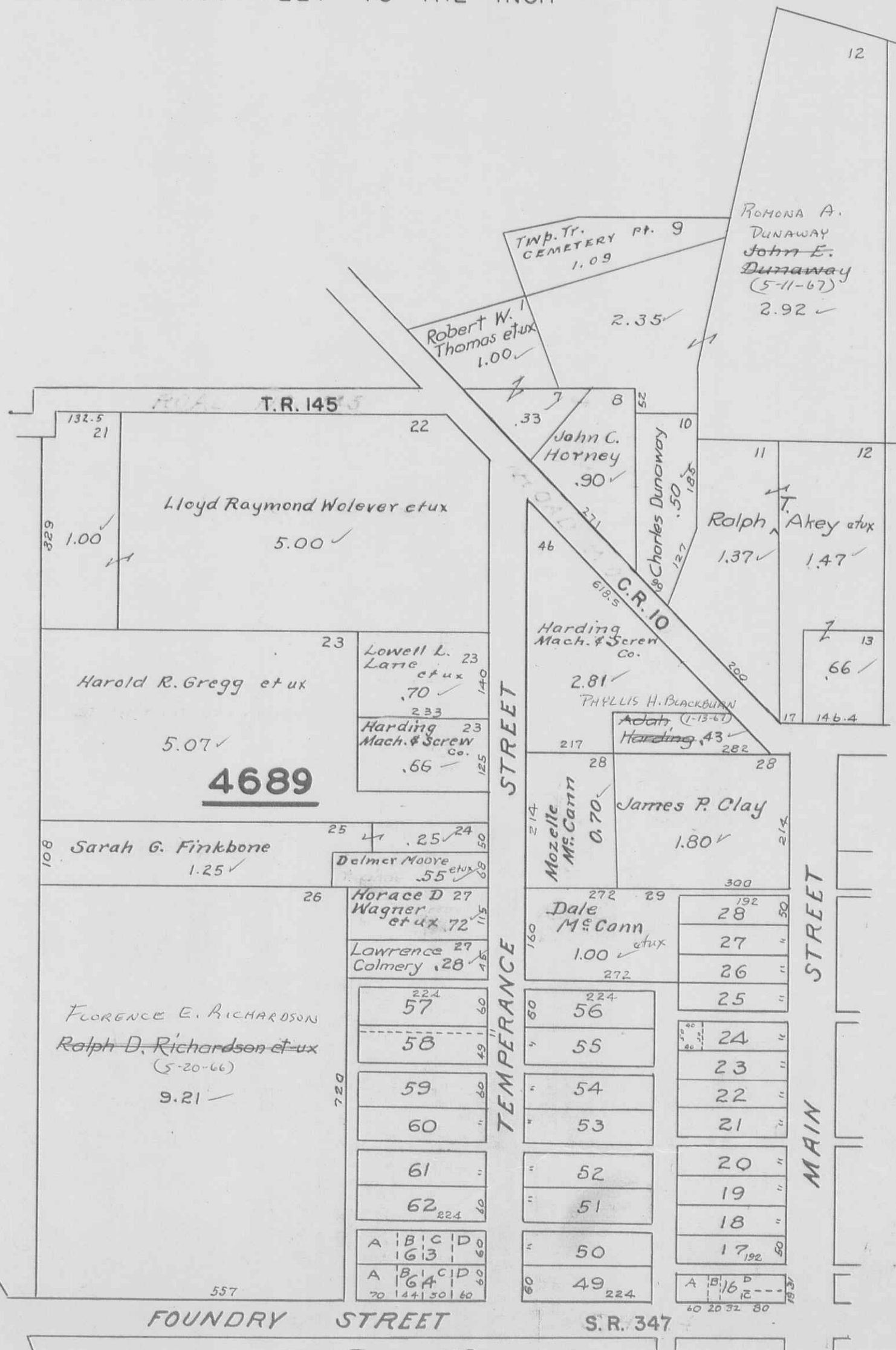
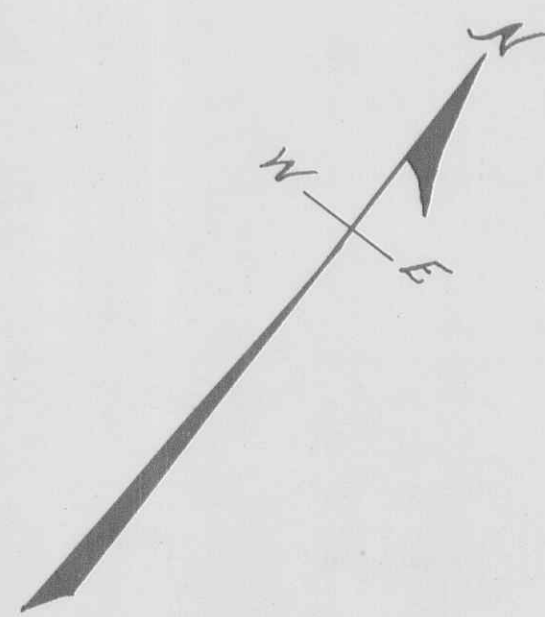


See Page 27

See Page 28

PERRY TOWNSHIP  
 NORTH WEST PART EAST LIBERTY

SCALE 200 FEET TO THE INCH



See Page 26

FOUNDRY STREET  
 See Page 28







VIRGINIA MILITARY SURVEY 4210

GREENFIELD

SCALE 150 FEET TO THE INCH

