

McARTHUR

TOWNSHIP

1966

INDEX

VIRGINIA MILITARY SURVEYS

V.M.S.	PAGE	V.M.S.	PAGE
9881	18	9932	9
9883	20	9946	1
9884	21	10121	1
9885	21	10122	17
9902	13	10248	17
9903-NORTH PART	3	10249	17
9903-SOUTH PART	4	10306	19
9904	5	10307	19
9905	10	10434	2
9906	11	10951	1
9907	12	12052	1
9925	1	12168	14
9927	2	12320	3
9928-NORTH PART	3	12350	3
9928-SOUTH PART	4	12742	2
9929	6	13715	2
9930	7	14033	11
9931	8	M:Pherson Section	16

SECTION	TOWN	RANGE	PAGE
17	7	9	15
18	7	9	15
19	7	9	15
20	7	9	15
BATES SUBDIVISION			26
CHEROKEE			24
HUNTSVILLE			22-23
NORTHWOOD			25

M^CARTHUR TOWNSHIP

INDEX MAP

VIRGINIA MILITARY SURVEY

SECTIONS - TOWN - RANGE

CORRECTED TO

~~January 1, 1966~~

JANUARY 1, 1967

JANUARY 1, 1968

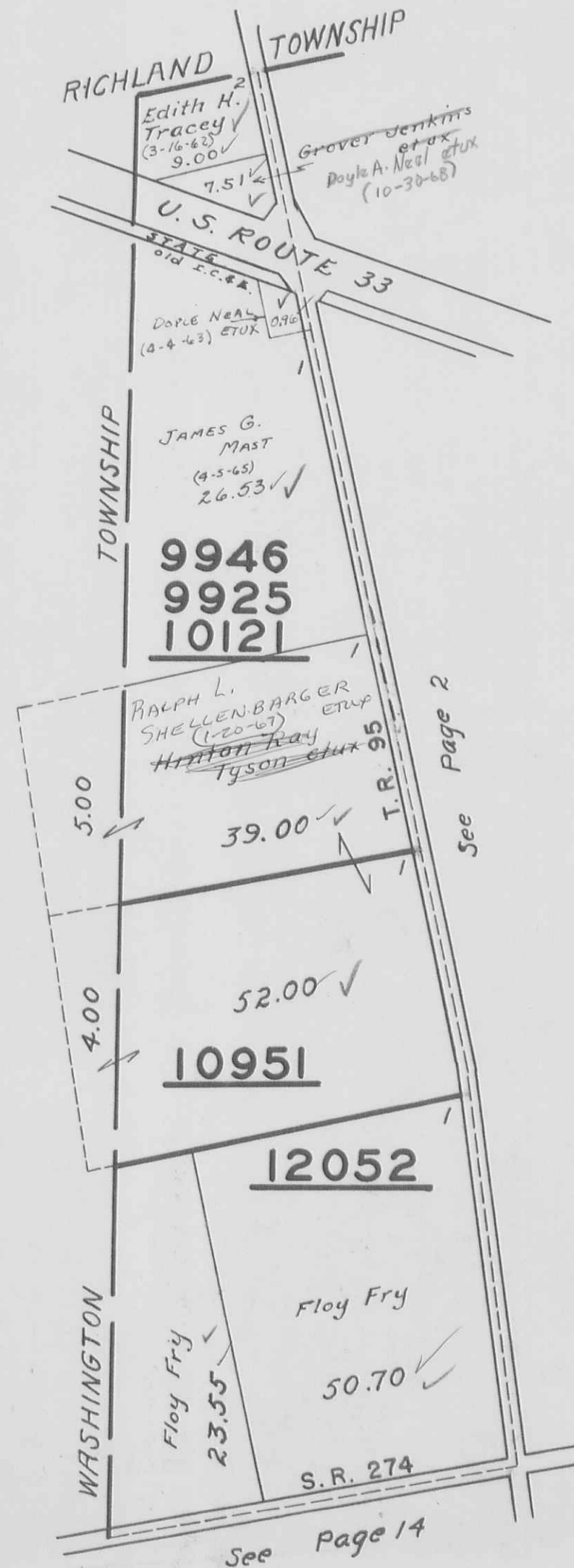
January 1, 1969



McARTHUR TOWNSHIP
VIRGINIA MILITARY SURVEYS

SCALE 10 CHAINS TO THE INCH

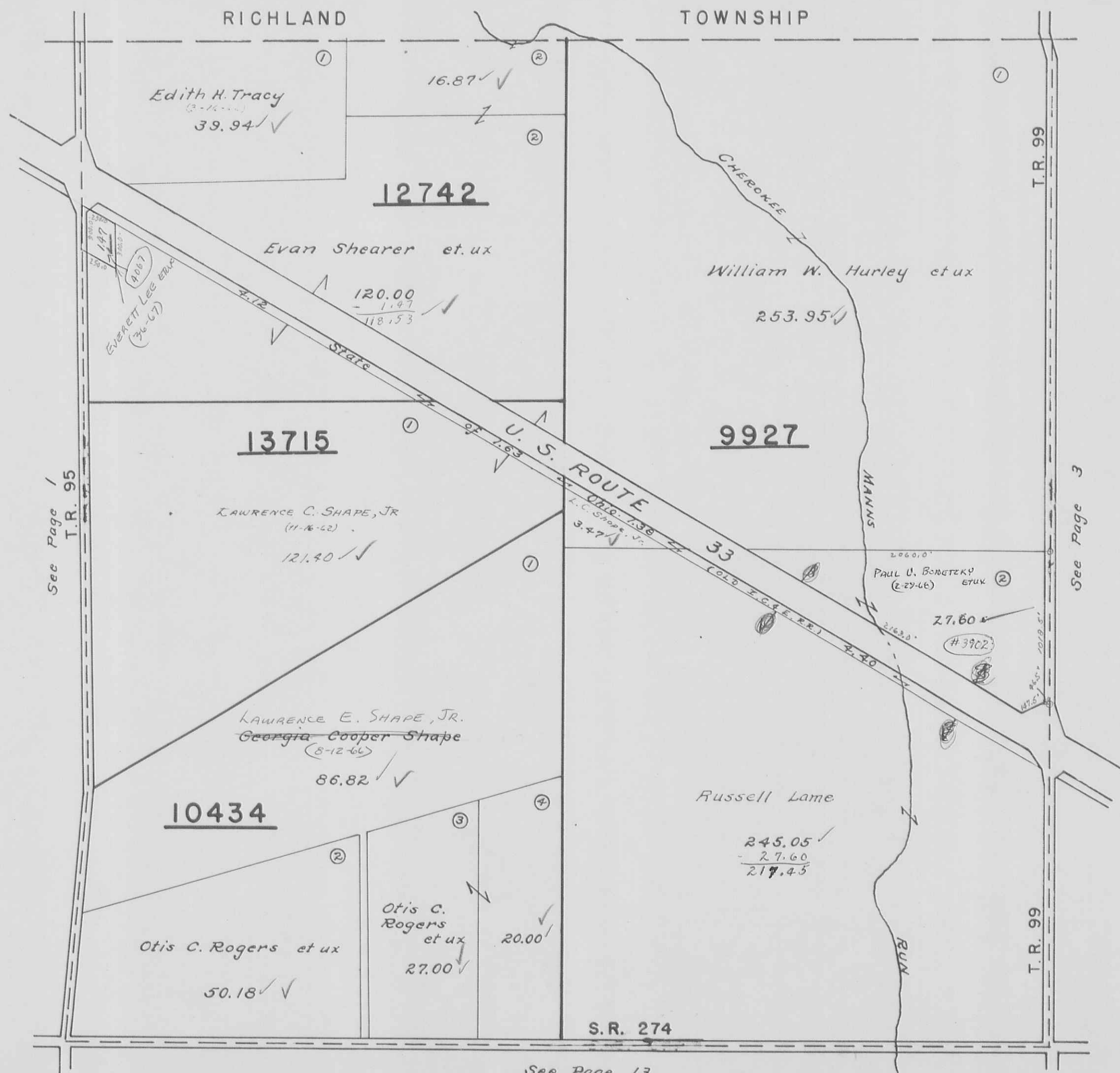
9946
9925
10121
10951
12052



VIRGINIA MILITARY SURVEY

SCALE 10 CHAINS TO THE INCH

12742
13715
10434
9927



See Page 1
T.R. 95

See Page 3

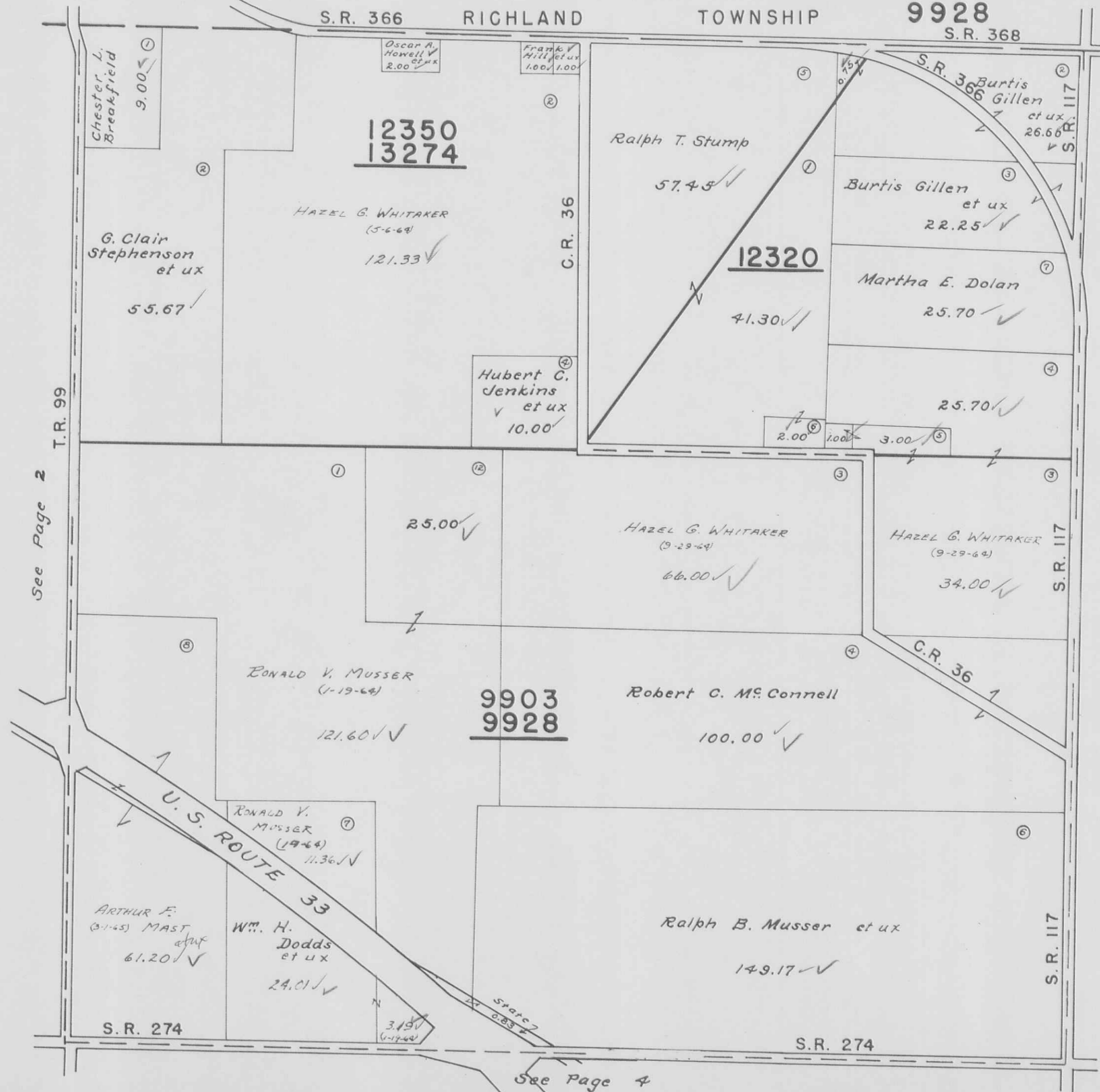
See Page 13

Mc ARTHUR TOWNSHIP

VIRGINIA MILITARY SURVEYS

12350
13274
12320
9903
9928

SCALE 10 CHAINS TO THE INCH



See Page 2

See Page 6

See Page 4

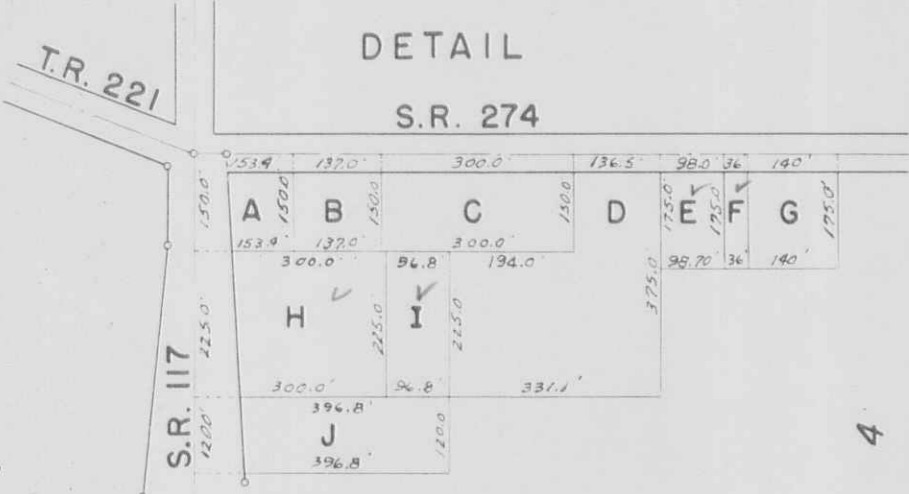
McARTHUR TOWNSHIP

5

V.M.S. 9904

SCALE: 1" = 10 CHAINS = 660'

SEE PAGE 6



SCALE: 1" = 300'

- | TRACT | NAME |
|--------|---|
| 0.47 | GERALDINE E. TRACEY (3-22-67) ✓ |
| A-0.53 | JESSE E. HAGER ETUX (7-29-65) ✓ |
| B-0.47 | JASON W. SWARTZ (7-19-65) ✓ |
| C-1.03 | ANTHONY A. DELAUGHDER ETUX (8-20-59) ✓ |
| D-2.18 | ANTHONY A. DELAUGHDER ETUX (8-20-59) ✓ |
| E-0.39 | LELO ALLOWAY (4-15-63) ✓ |
| F-0.15 | LELO ALLOWAY (2-13-63) ✓ |
| G-0.56 | ETHEL M. HANSON (1-18-68) ✓ |
| H-1.55 | VERNON A. BUCKHAM ETUX (10-23-56) ✓
Mary J. Stoner (5-27-68) ✓ |
| I-0.50 | VERNON A. BUCKHAM ETUX (10-23-56) ✓
Mary J. Stoner (5-27-68) ✓ |
| J-1.09 | DONALD METZLER ETUX (7-30-56) ✓ |

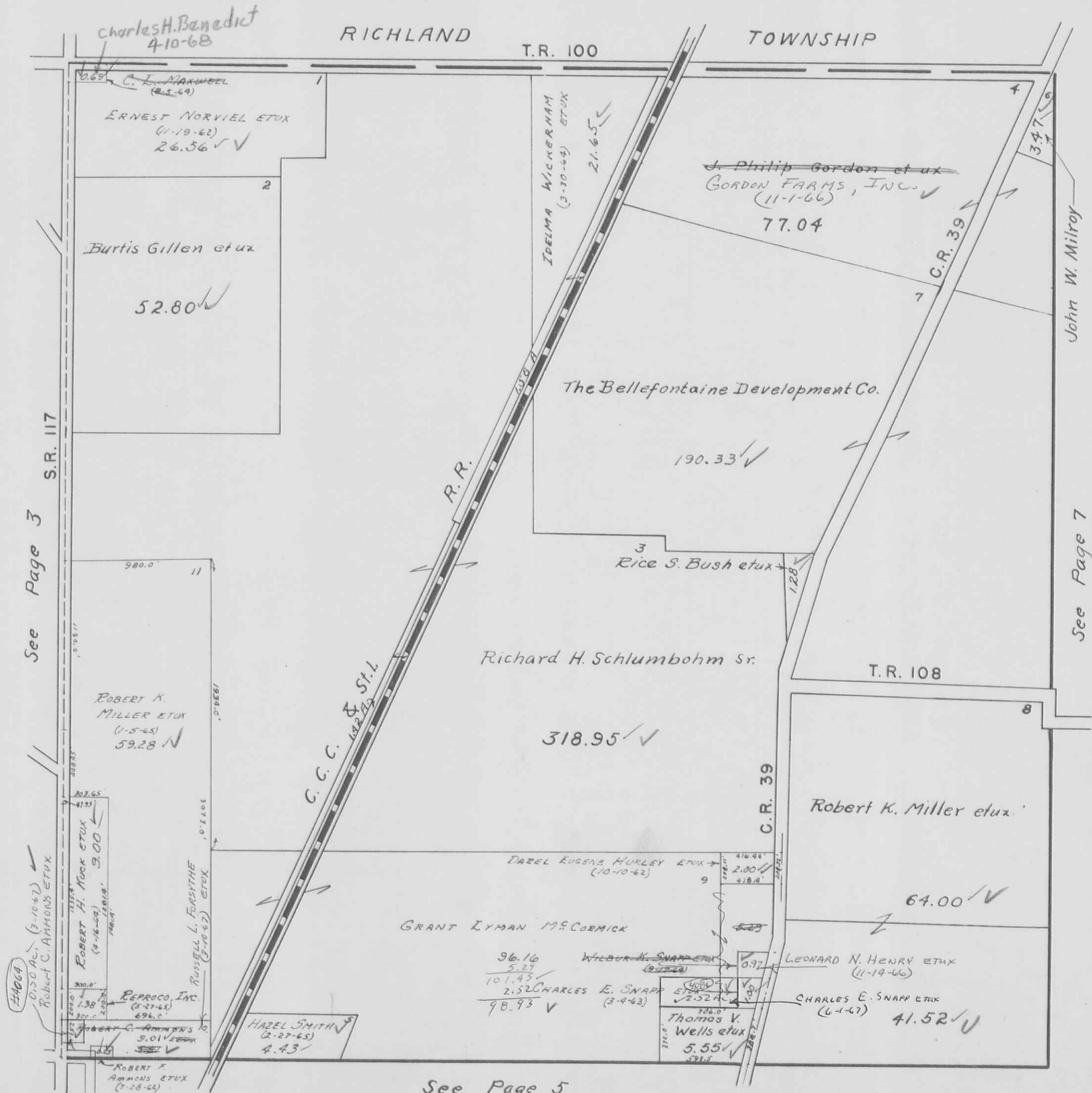
DRAWN: MARCH 18, 1966
DANIEL E. GILBERT

SEE PAGE 19

SEE PAGE 10

McARTHUR TOWNSHIP
VIRGINIA MILITARY SURVEY 9929

SCALE 10 CHAINS TO THE INCH



See Page 3

See Page 7

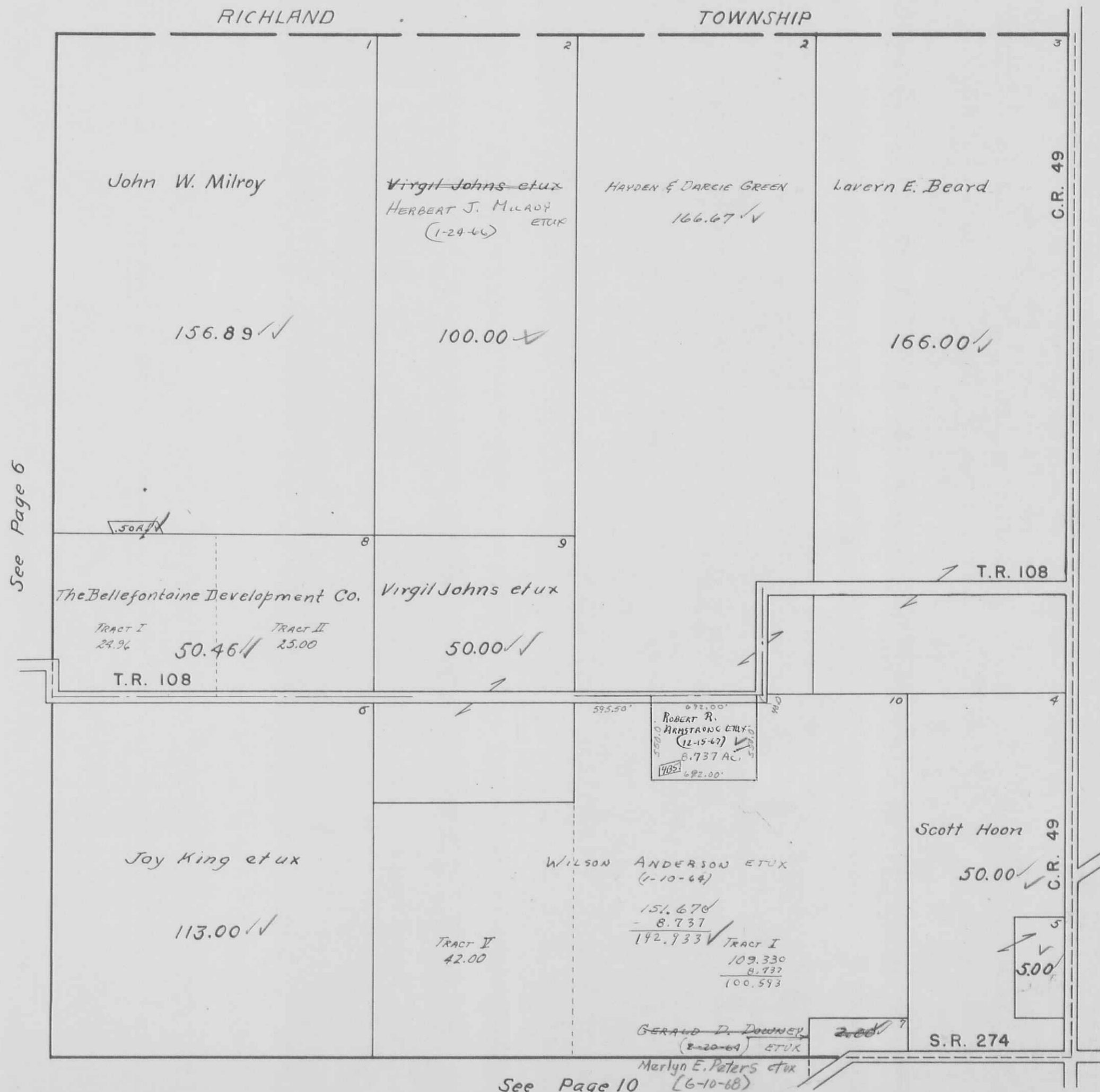
See Page 5

VIRGINIA MILITARY SURVEY 9930

SCALE 10 CHAINS TO THE INCH

RICHLAND

TOWNSHIP

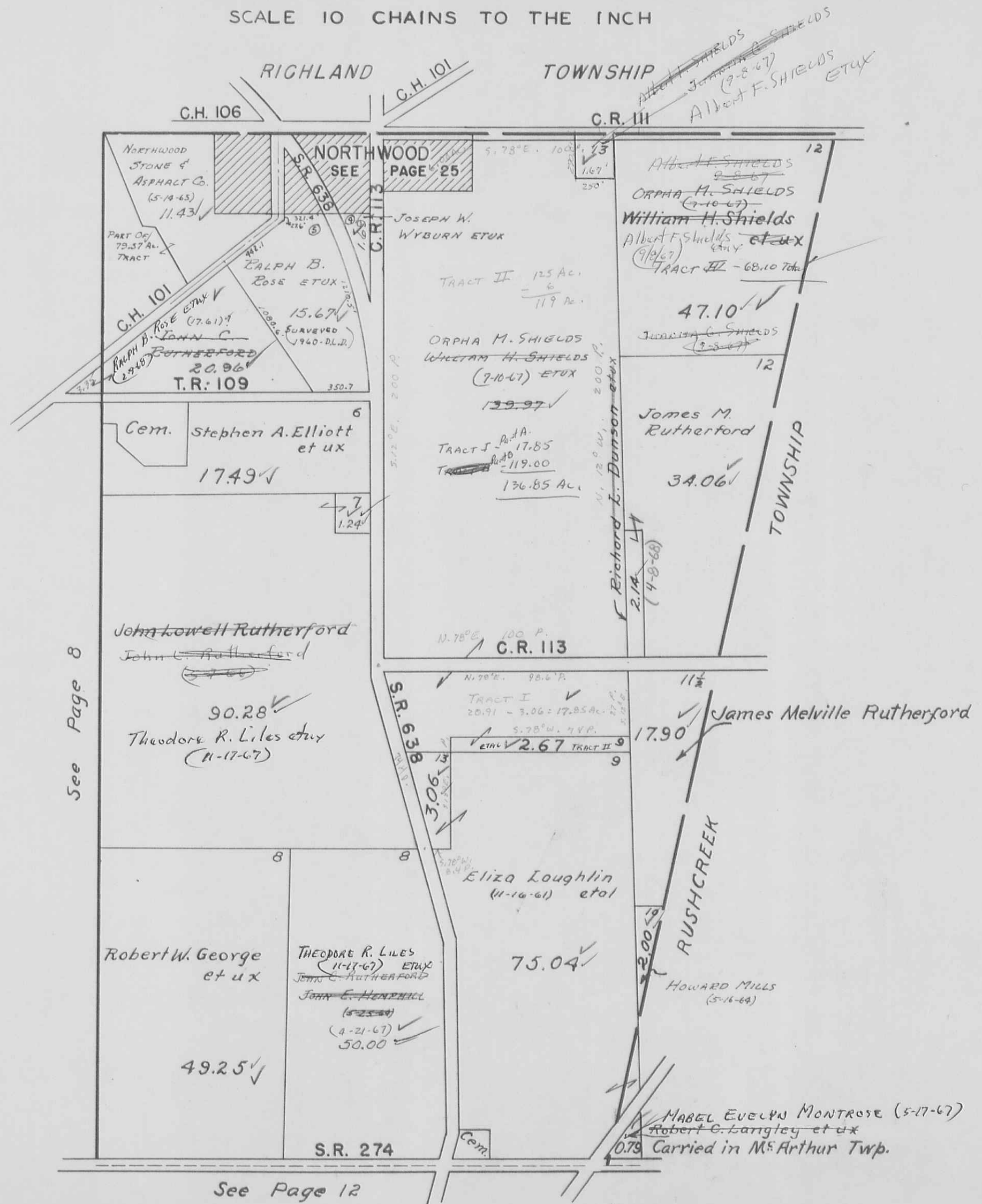


See Page 6

See Page 8

McARTHUR TOWNSHIP
 VIRGINIA MILITARY SURVEY 9932

SCALE 10 CHAINS TO THE INCH



See Page 8

See Page 12

McARTHUR TOWNSHIP
 VIRGINIA MILITARY SURVEY 9905

SCALE 10 CHAINS TO THE INCH



See Page 20

VIRGINIA

MILITARY

SURVEYS

9906

14033

SCALE 10 CHAINS TO THE INCH

See Page 8 S.R. 274



See Page 10 C.R. 49

See Page 12

See Page 21

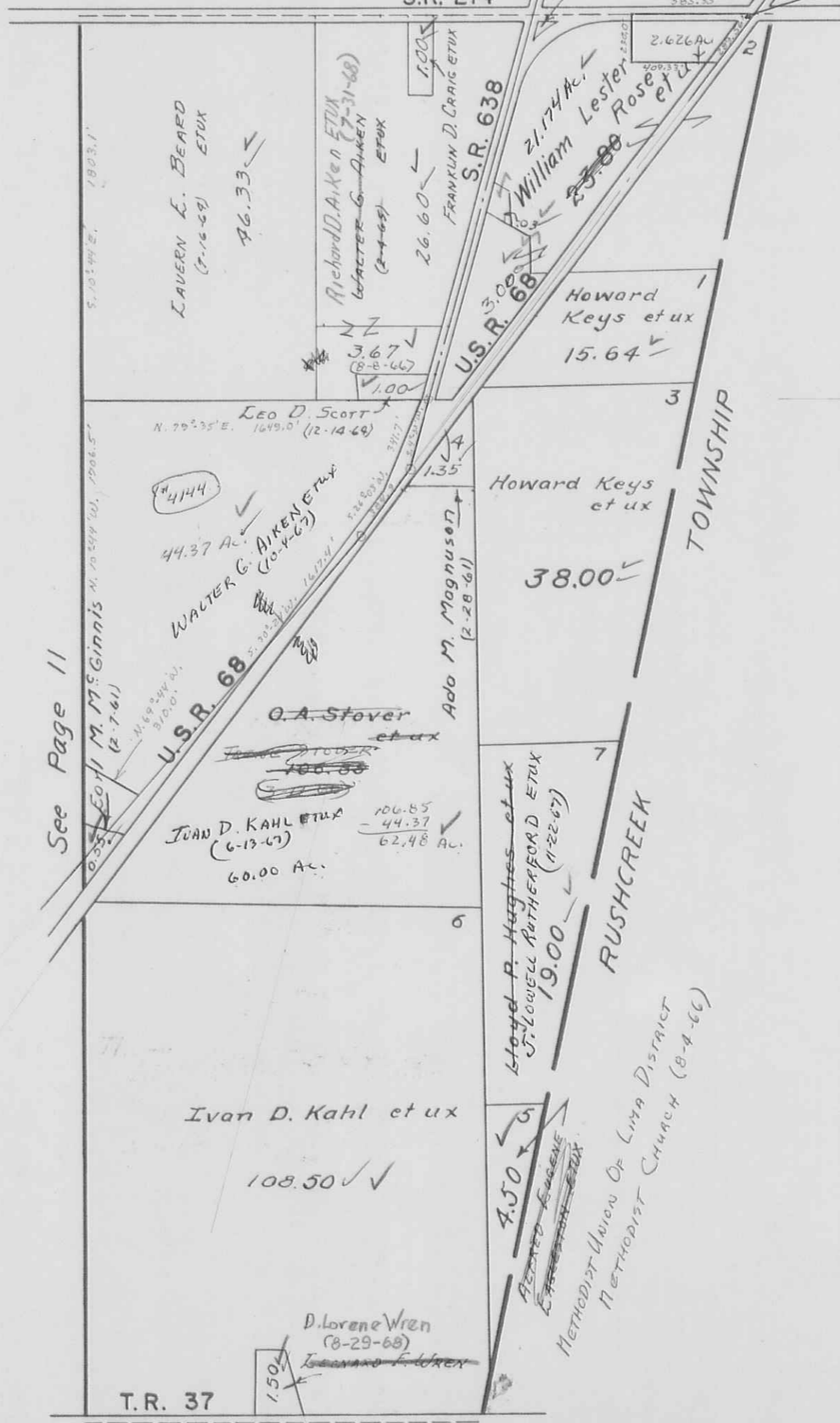
VIRGINIA MILITARY SURVEY 9907

SCALE 10 CHAINS TO THE INCH

Note: Cecil M. Connor 0.74 A.
To: State of Ohio; By Perpetual
Easement dated November-13-1941
Recorders book
171 Page 86

STATE OF OHIO
(11-16-67)

See Page 9 S.R. 274



23.800
- 2.626
21.174 ✓

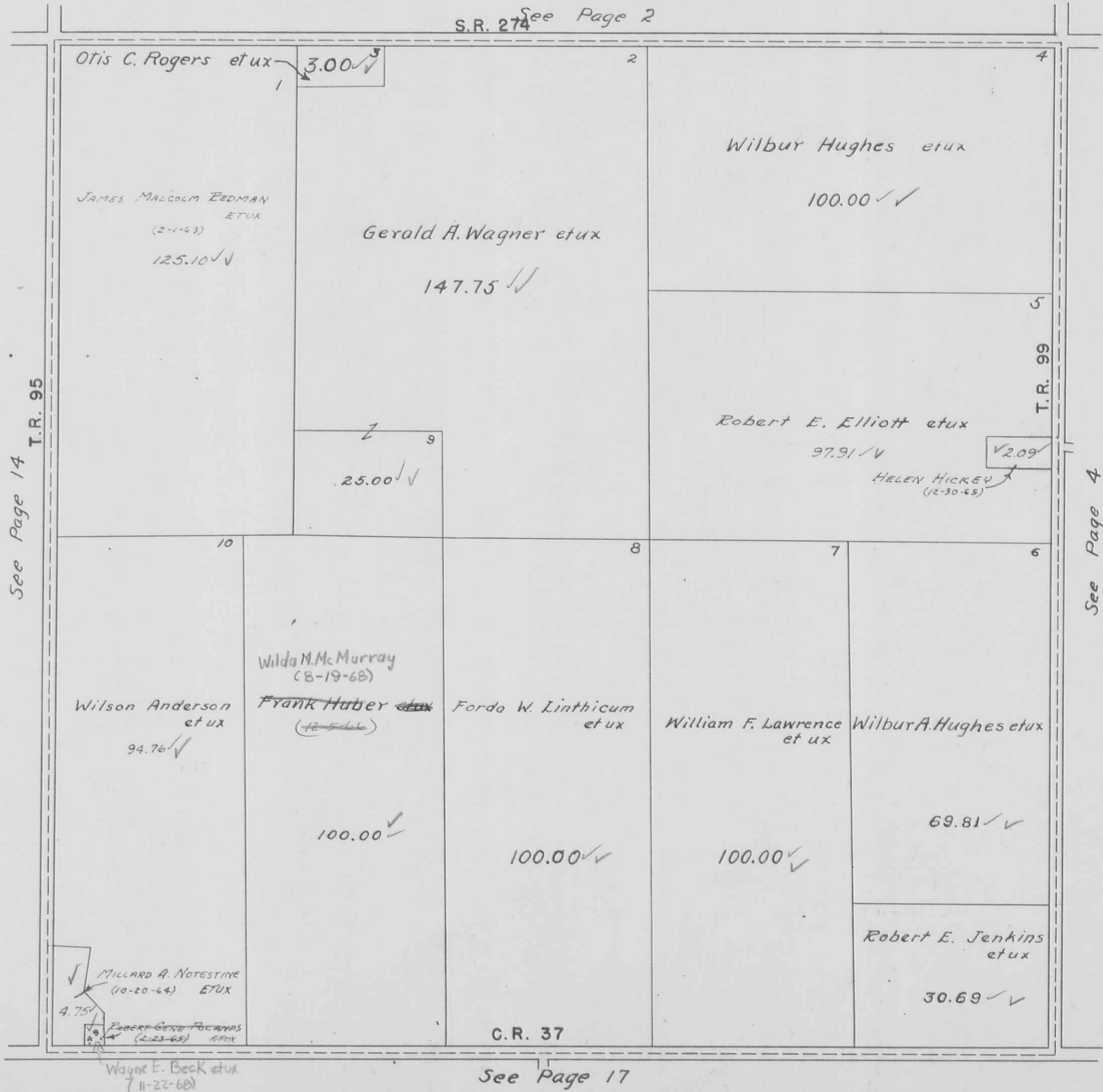
See Page 11

T.R. 37

See Page 21

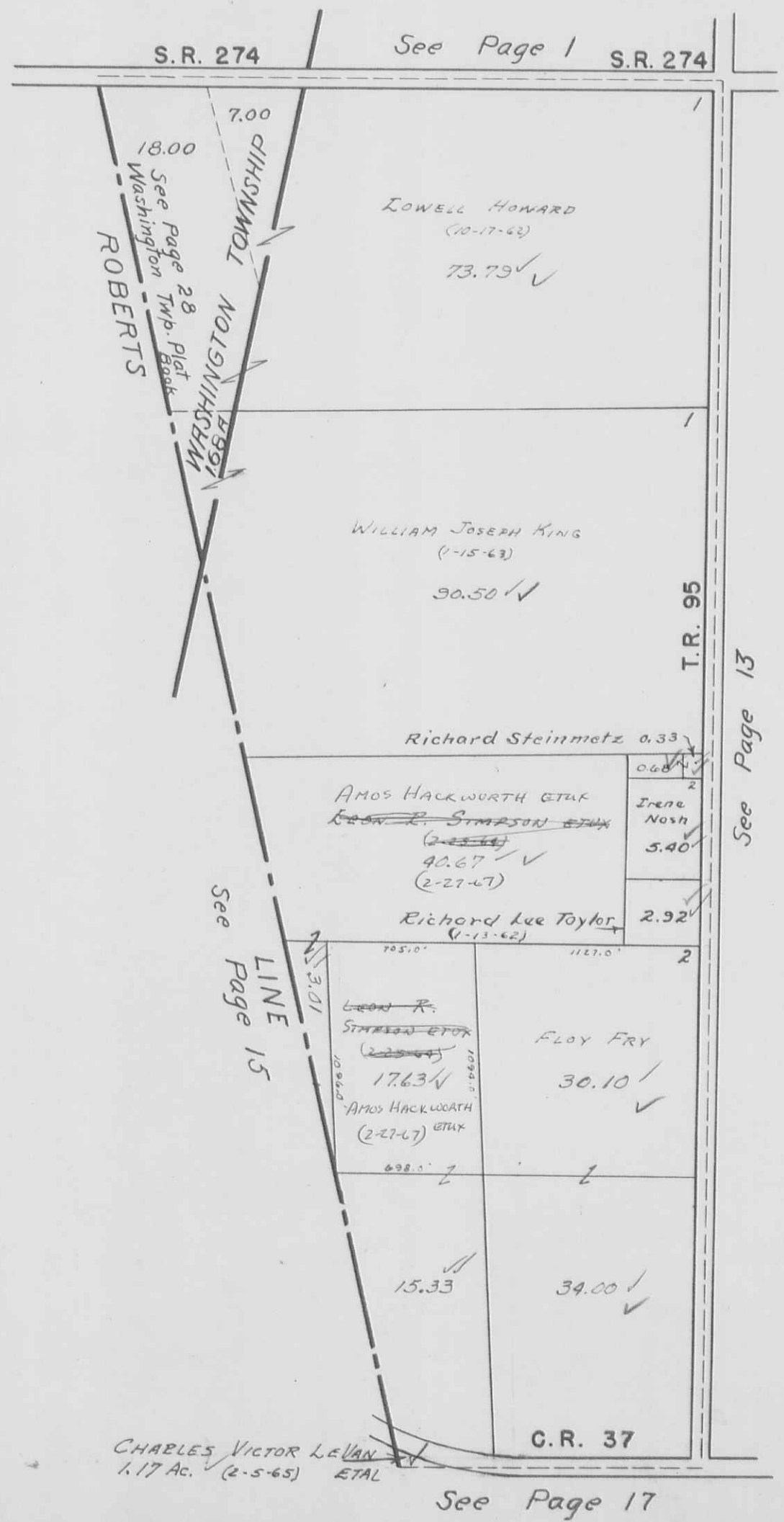
McARTHUR TOWNSHIP
VIRGINIA MILITARY SURVEY 9902

SCALE 10 CHAINS TO THE INCH



McARTHUR TOWNSHIP
 VIRGINIA MILITARY SURVEY 12168

SCALE 10 CHAINS TO THE INCH

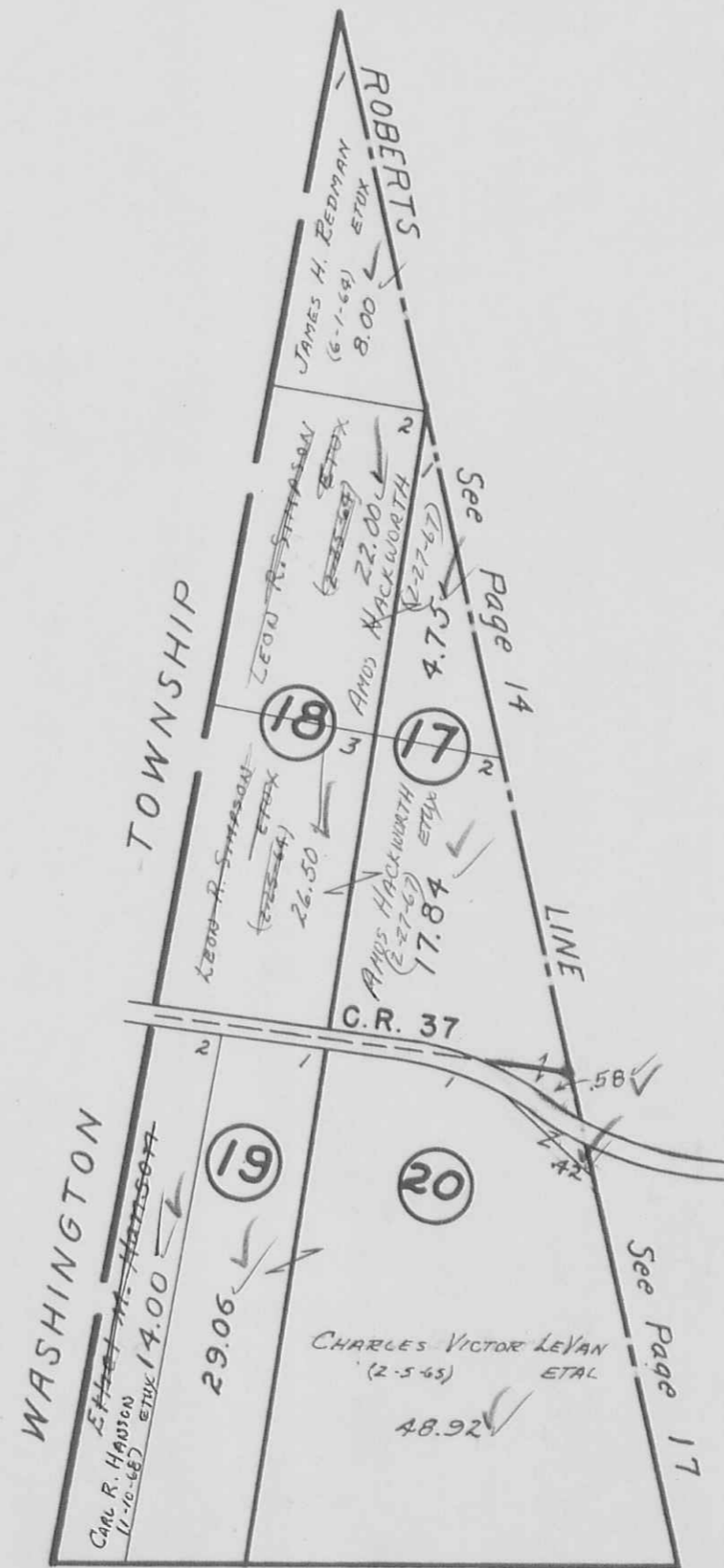


CHARLES VICTOR LEVAN
 1.17 Ac. (2-5-65) ETAL

See Page 17

McARTHUR TOWNSHIP
SECTION 17 18
SECTION 19 20 TOWN 7 RANGE 9

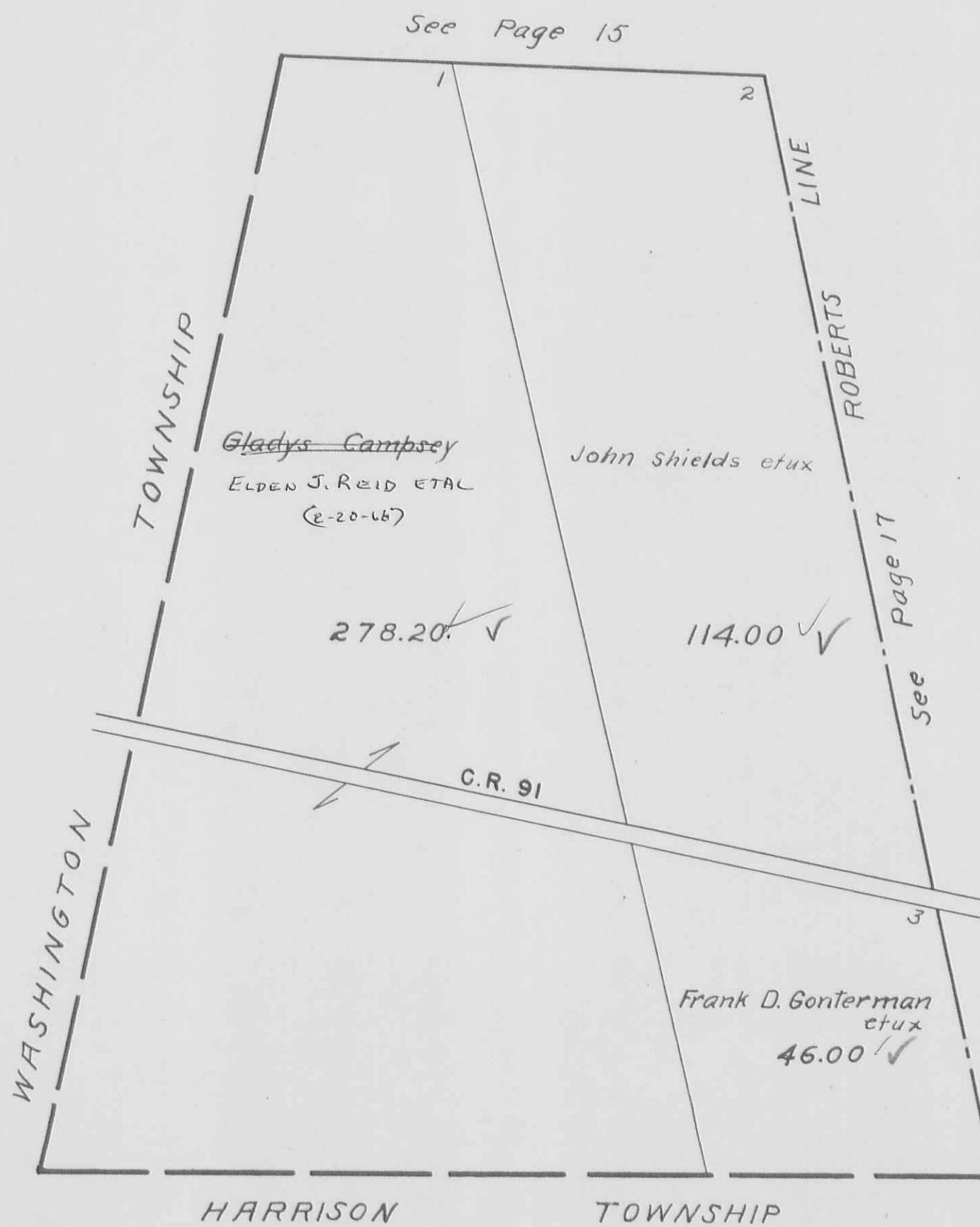
SCALE 10 CHAINS TO THE INCH



See Page 16

McPHERSON SECTION TOWN 7 RANGE 9

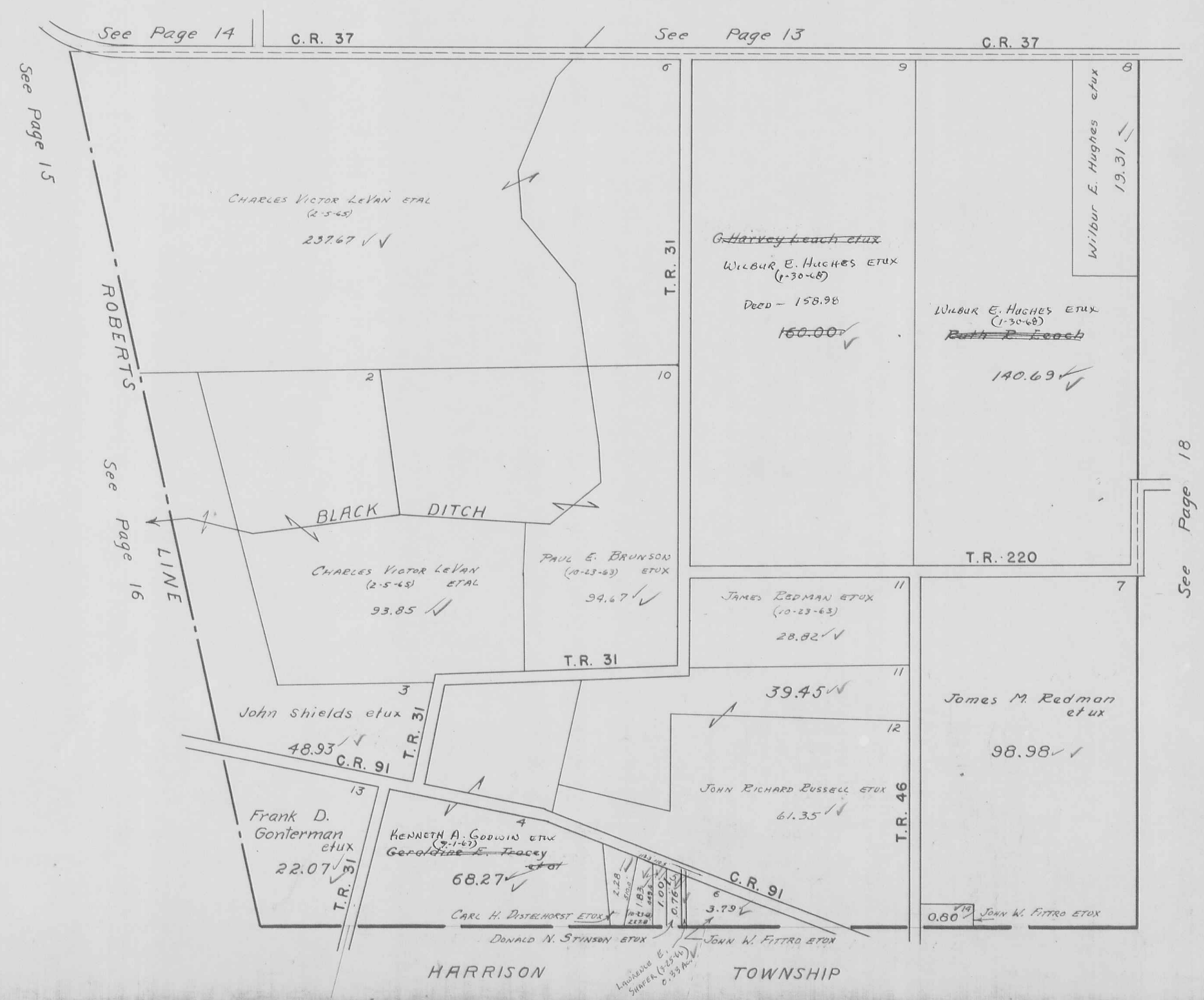
SCALE 10 CHAINS TO THE INCH



McARTHUR TOWNSHIP
VIRGINIA MILITARY SURVEYS

10122
10248
10249

SCALE 10 CHAINS TO THE INCH



H.E.D.

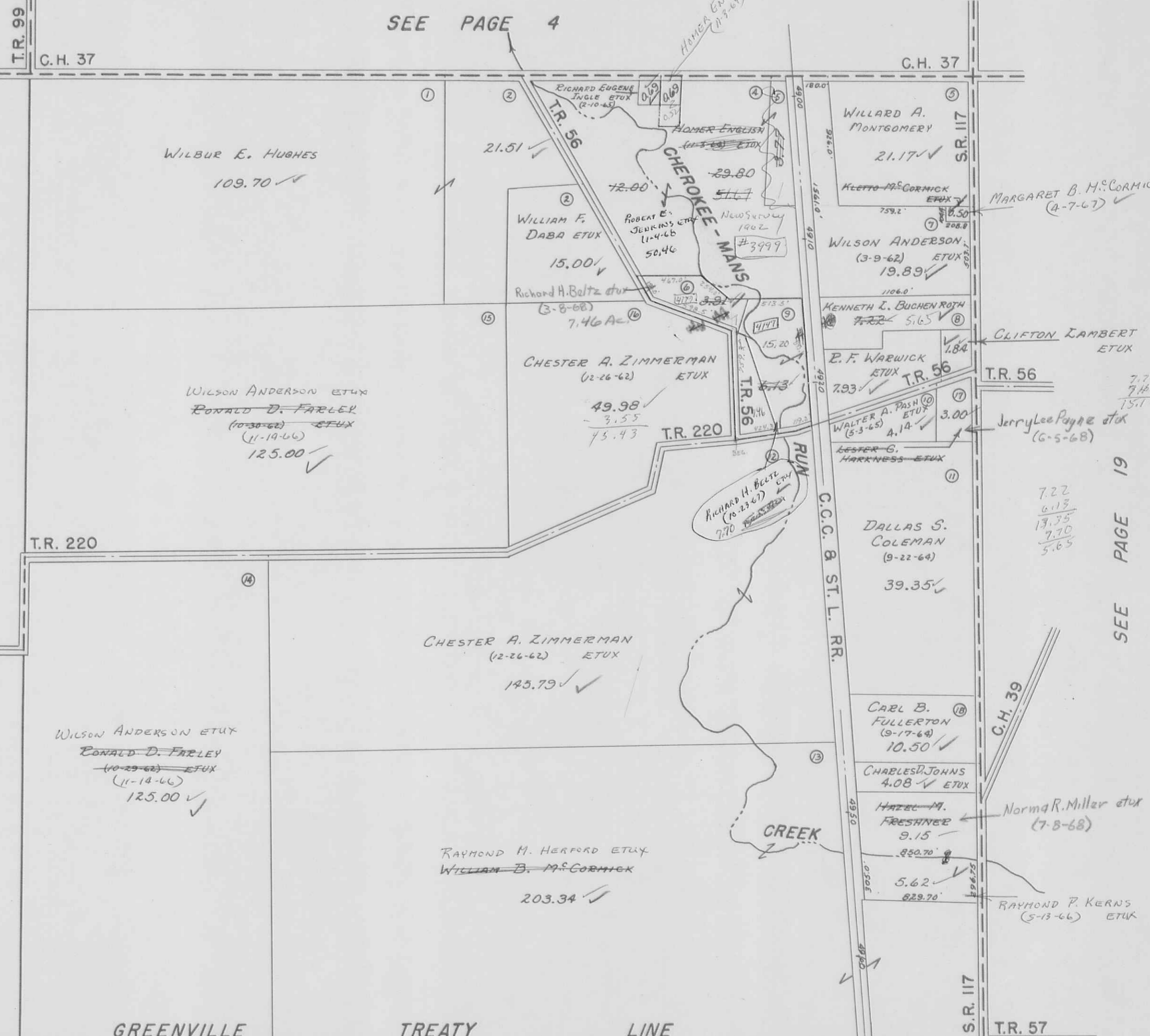
HARRISON TOWNSHIP

MCARTHUR TOWNSHIP

V.M.S. 9881

SCALE: 1" = 10 CHAINS = 660'

SEE PAGE 4



SEE PAGE 17

SEE PAGE 19

51.67
 5.69
 50.98

GREENVILLE TREATY LINE

HARRISON TOWNSHIP

SEE HARRISON TOWNSHIP PAGE 24

SEE HARRISON TOWNSHIP PAGE 23

MCARTHUR TOWNSHIP

V.M.S 10306 & 10307

SCALE: 1" = 10 CHAINS = 660'



SEE PAGE 18

SEE PAGE 20

40.00
 39.69
 36.20

1205.0
 150.0
 1055.0

DRAWN: MARCH 23, 1966
 DANIEL E. GILBERT

SEE HARRISON TOWNSHIP PAGE 23

SEE HARRISON TOWNSHIP PAGE 22

McARTHUR TOWNSHIP
 VIRGINIA MILITARY SURVEY 9883

SCALE 10 CHAINS TO THE INCH



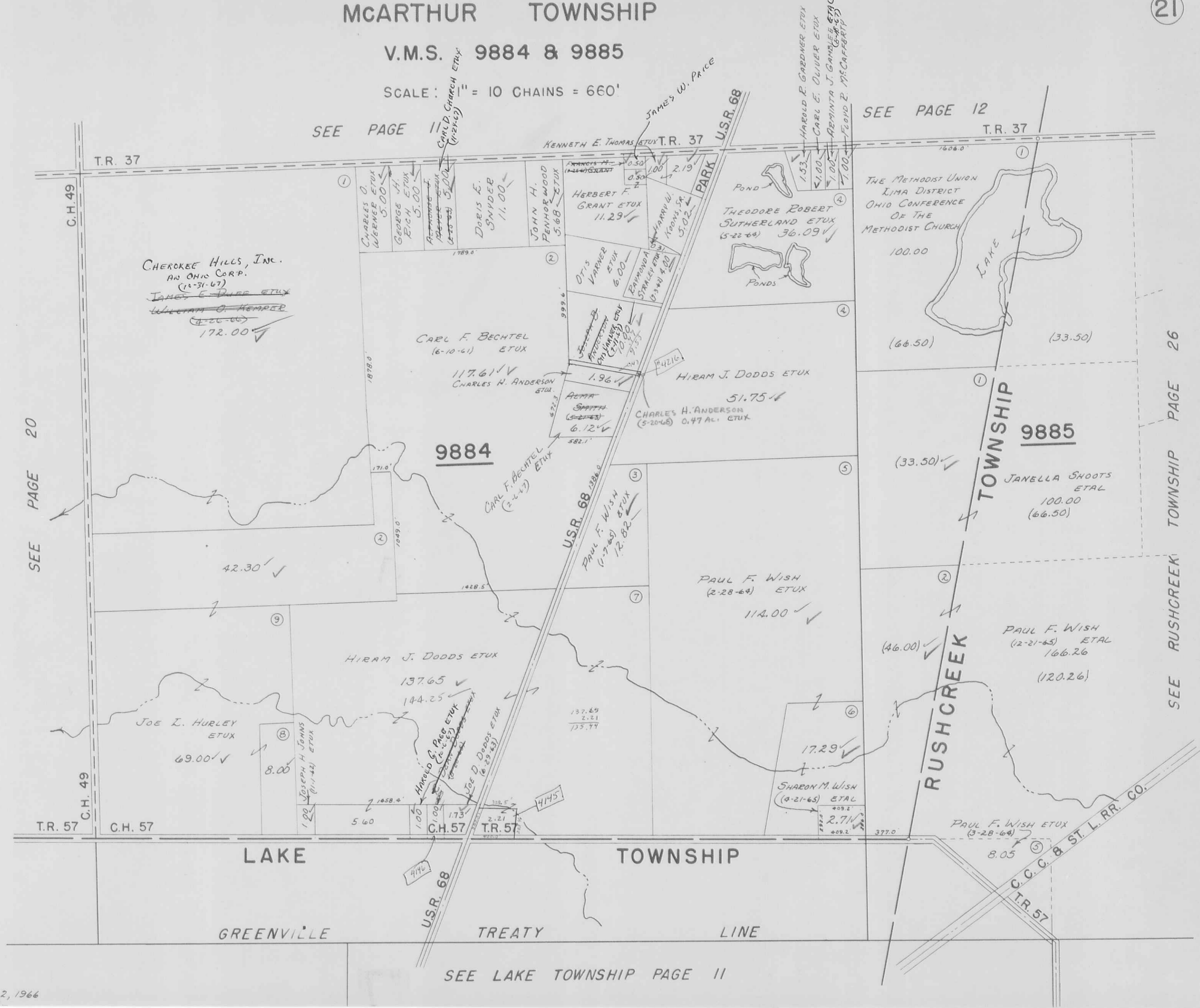
MCARTHUR TOWNSHIP

V.M.S. 9884 & 9885

SCALE: 1" = 10 CHAINS = 660'

SEE PAGE 11

SEE PAGE 12

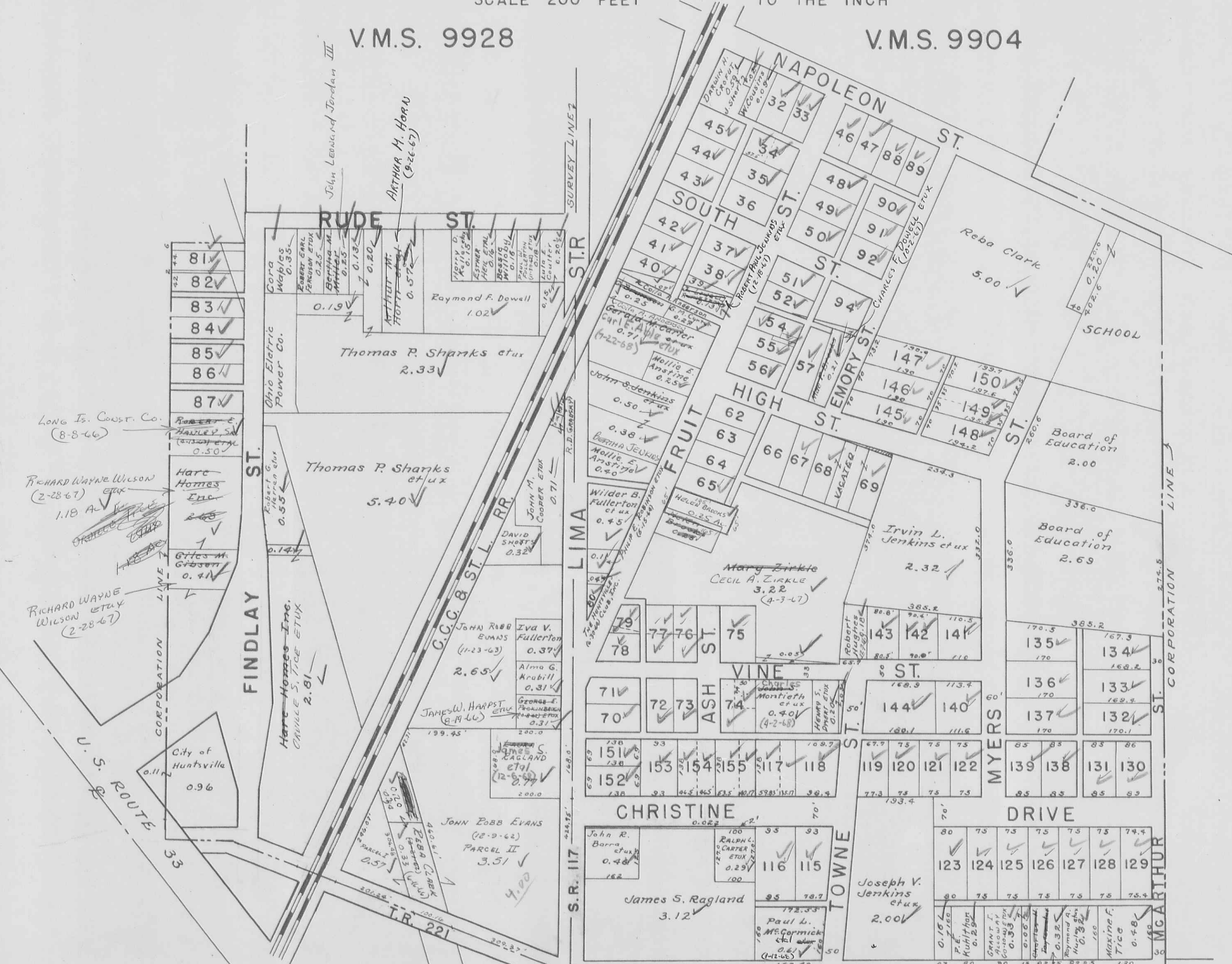


HUNTSVILLE CORPORATION (SOUTH PART)

SCALE 200 FEET TO THE INCH

V.M.S. 9928

V.M.S. 9904



LONG IS. COAST. CO. (8-8-66)

RICHARD WAYNE WILSON (2-28-67) 1.18 AC

RICHARD WAYNE WILSON (2-28-67)

CITY OF HUNTSVILLE 0.96

JOHN LEONARD JORDAN III
ARTHUR M. HORN (9-26-67)

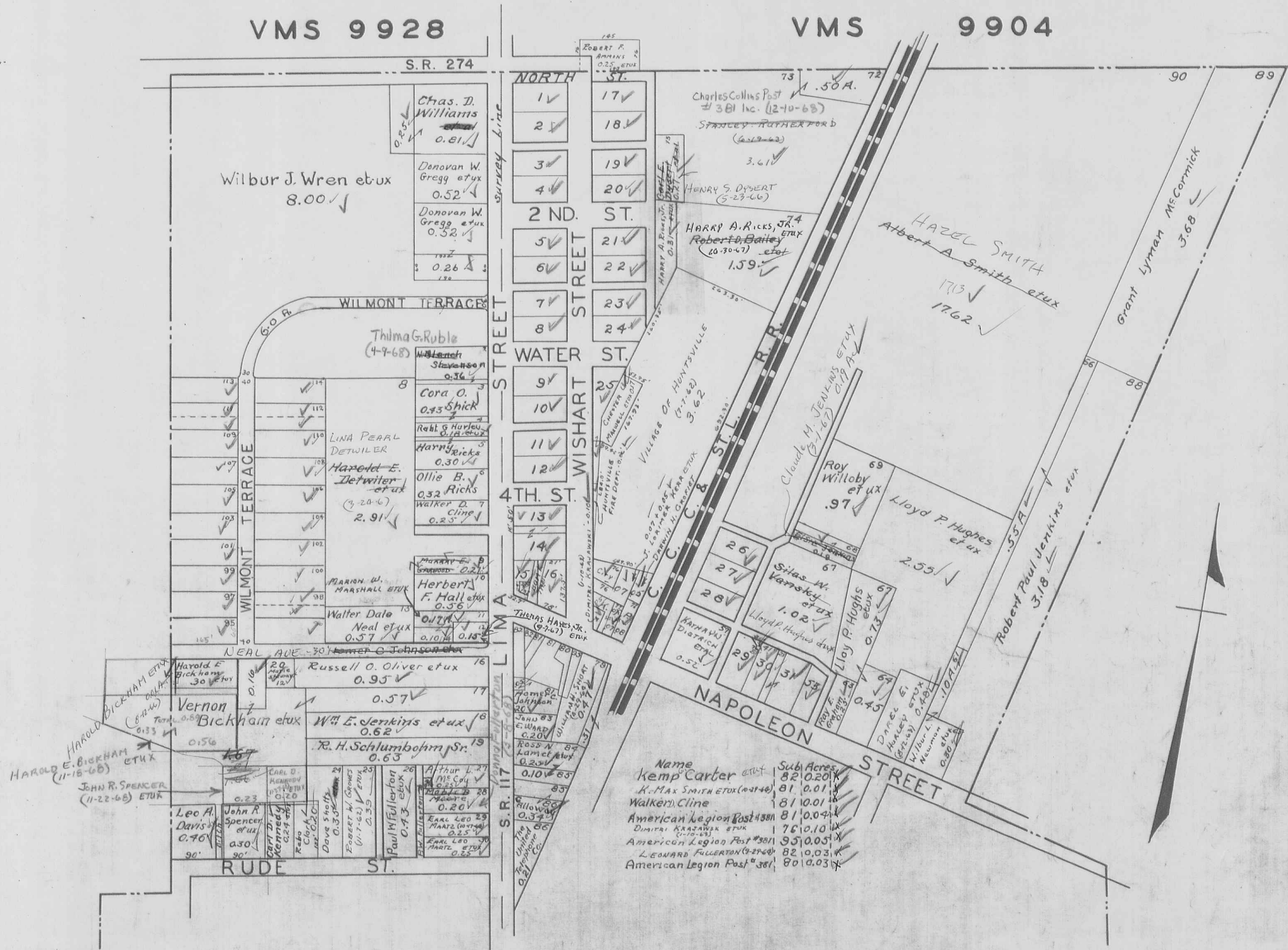
PAUL R. CRANE ET UX (8-21-66)
LARRY B. JERVISS ET UX (6-25-68)

HUNTSVILLE CORPORATION NORTH PART

SCALE 200 FEET TO THE INCH

VMS 9928

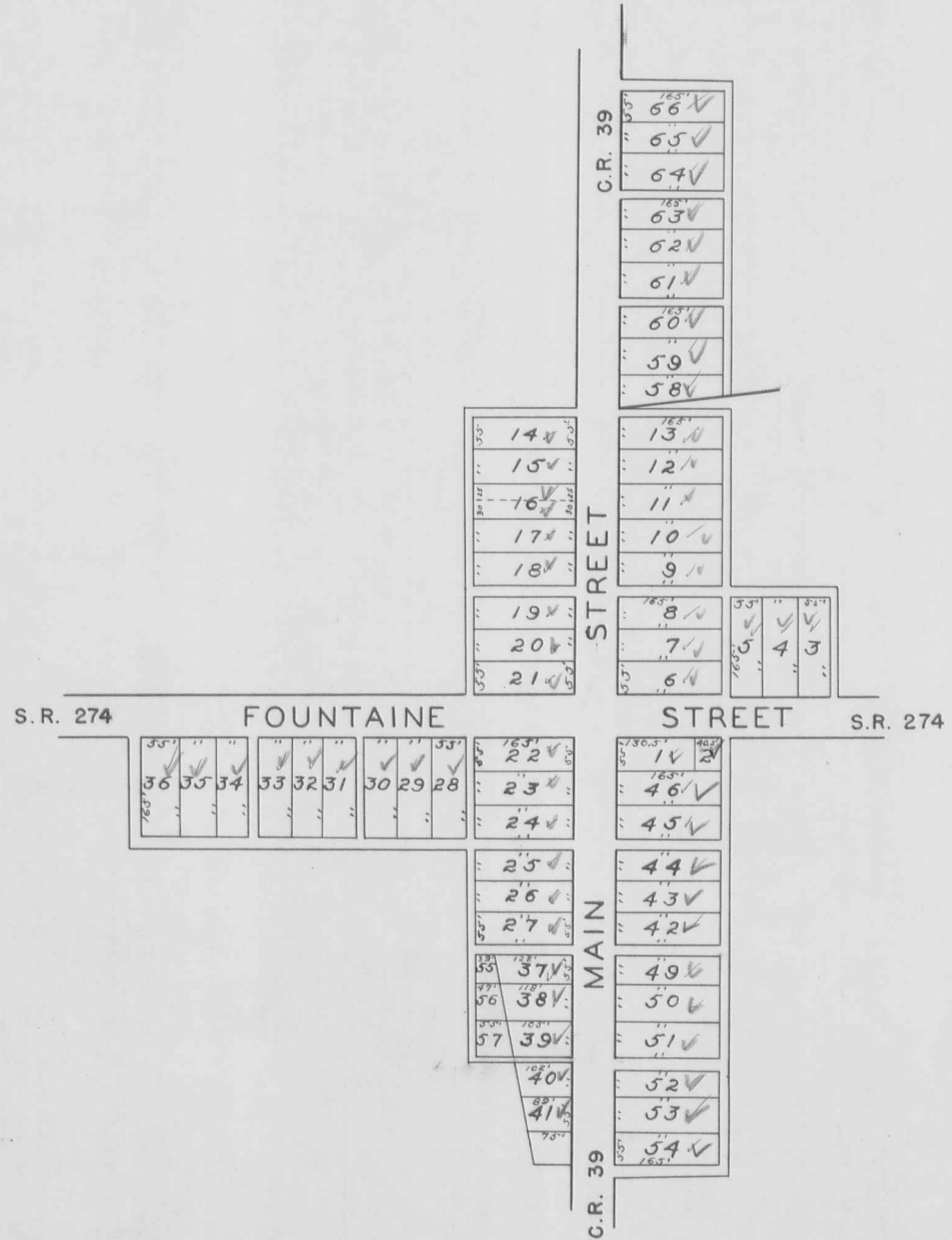
VMS 9904



Name	Sub	Acres
Kemp Carter et ux	82	0.20
K. Max Smith et ux (10-21-40)	81	0.01
Walker, Cline	81	0.01
American Legion Post #381	81	0.04
Dimitri Kravanski et ux (10-2-43)	76	0.10
American Legion Post #381	95	0.05
Leonard Fullerton (9-27-40)	82	0.03
American Legion Post #381	80	0.03

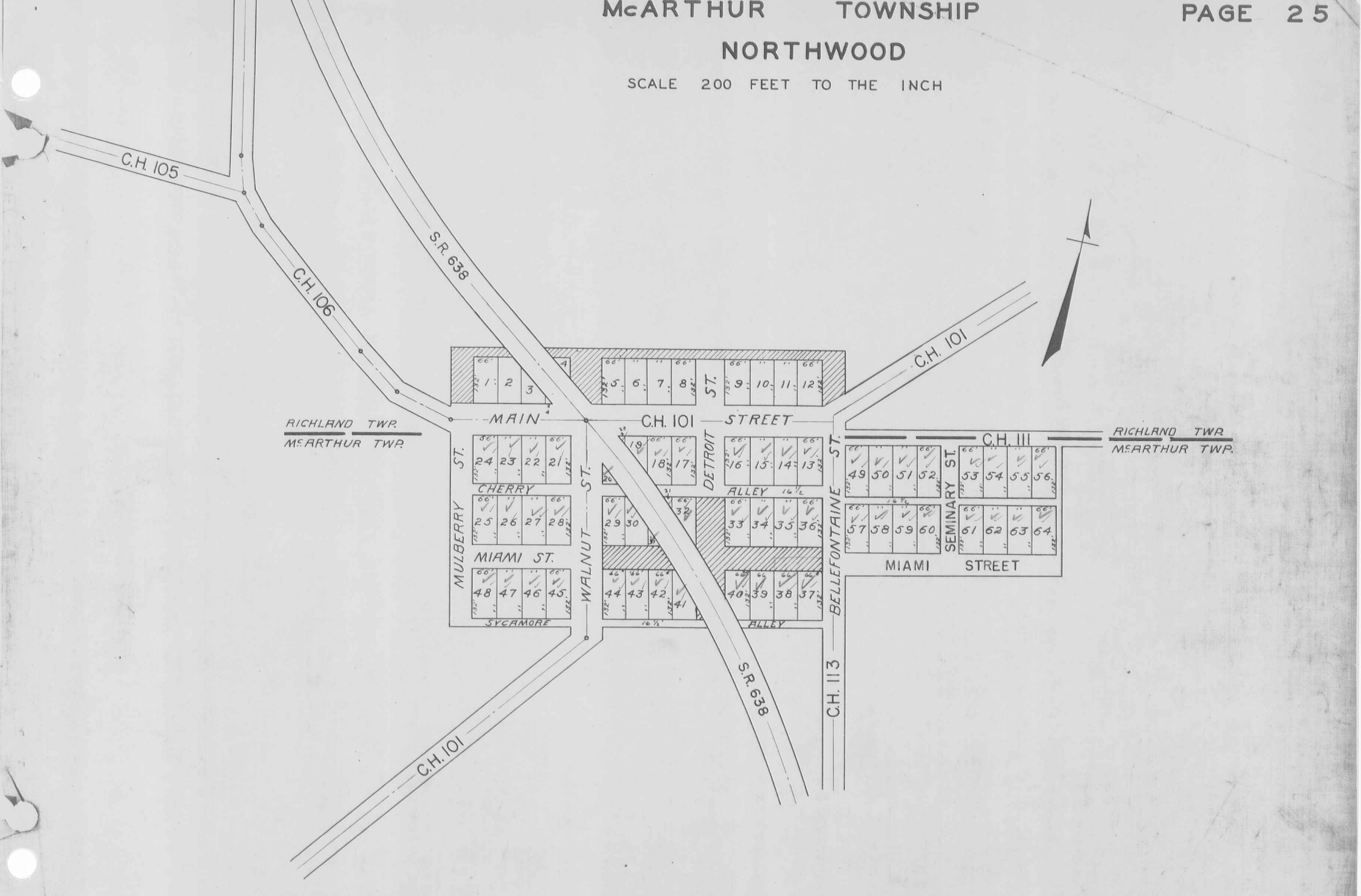
CHEROKEE

SCALE 200 FEET TO THE INCH



NORTHWOOD

SCALE 200 FEET TO THE INCH



RICHLAND TWP.
McARTHUR TWP.

RICHLAND TWP.
McARTHUR TWP.

