

LIBERTY

TOWNSHIP

1966

INDEX

SECTION TOWN RANGE PAGE

| | | | |
|----|---|----|----|
| 4 | 4 | 13 | 9 |
| 5 | 4 | 13 | 8 |
| 6 | 4 | 13 | 5 |
| 27 | 5 | 13 | 11 |
| 28 | 5 | 13 | 10 |
| 29 | 5 | 13 | 7 |
| 30 | 5 | 13 | 6 |
| 33 | 5 | 13 | 12 |
| 34 | 5 | 13 | 9 |
| 35 | 5 | 13 | 8 |
| 36 | 5 | 13 | 5 |

| | | | |
|----|---|----|---|
| 1 | 3 | 14 | 4 |
| 2 | 3 | 14 | 1 |
| 25 | 4 | 14 | 3 |
| 26 | 4 | 14 | 2 |
| 31 | 4 | 14 | 4 |
| 32 | 4 | 14 | 1 |

V.M.S. 5864 _____ 2

| | |
|----------------------------|------------------|
| WEST LIBERTY CORPORATION | -----13-14-15-16 |
| CRESTWOOD ALLOTMENT | -----17 |
| HILLWOOD ACRES ALLOTMENT | -----20 |
| SOUTH GATE ACRES ALLOTMENT | -----18 |
| WOODLAND REST ALLOTMENT | -----19 |
| TANGLEWOOD OAKS ALLOTMENT | -----21 |
| CEDAR HEIGHTS ALLOTMENT | -----22 |
| BARRETT ALLOTMENT | -----23 |

LIBERTY TOWNSHIP INDEX MAP

CORRECTED TO:
January 1, 1966
JANUARY 1, 1967
JANUARY 1, 1968
JANUARY 1, 1969

| | | | | |
|----------------------|--------------------|--|--------------------|-----------------------|
| HARRISON TOWNSHIP | | LAKE TOWNSHIP | | |
| | 2-3-14 PAGE 1 | 32-4-14 PAGE 1 | 26-4-14 PAGE 2 | JEFFERSON TOWNSHIP |
| | 1-3-14 PAGE 4 | 31-4-14 PAGE 4 | 25-4-14 PAGE 3 | |
| TOWNSHIP | 6-4-13 PAGE 5 | 36-5-13 PAGE 5 | 30-5-13 PAGE 6 | TOWNSHIP |
| UNION | 5-4-13 PAGE 8 | 35-5-13 PAGE 8 | 29-5-13 PAGE 7 | MONROE |
| | 4-4-13 PAGE 9 | 34-5-13 PAGE 9 | 28-5-13 PAGE 10 | |
| CHAMPAIGN COUNTY | 33-5-13 PAGE 12 | <div style="border: 1px solid black; padding: 5px; display: inline-block;"> WEST LIBERTY CORPORATION PAGES 13-14-15-16 </div> | | CHAMPAIGN COUNTY |
| | | 27-5-13 PAGE 11 | | |

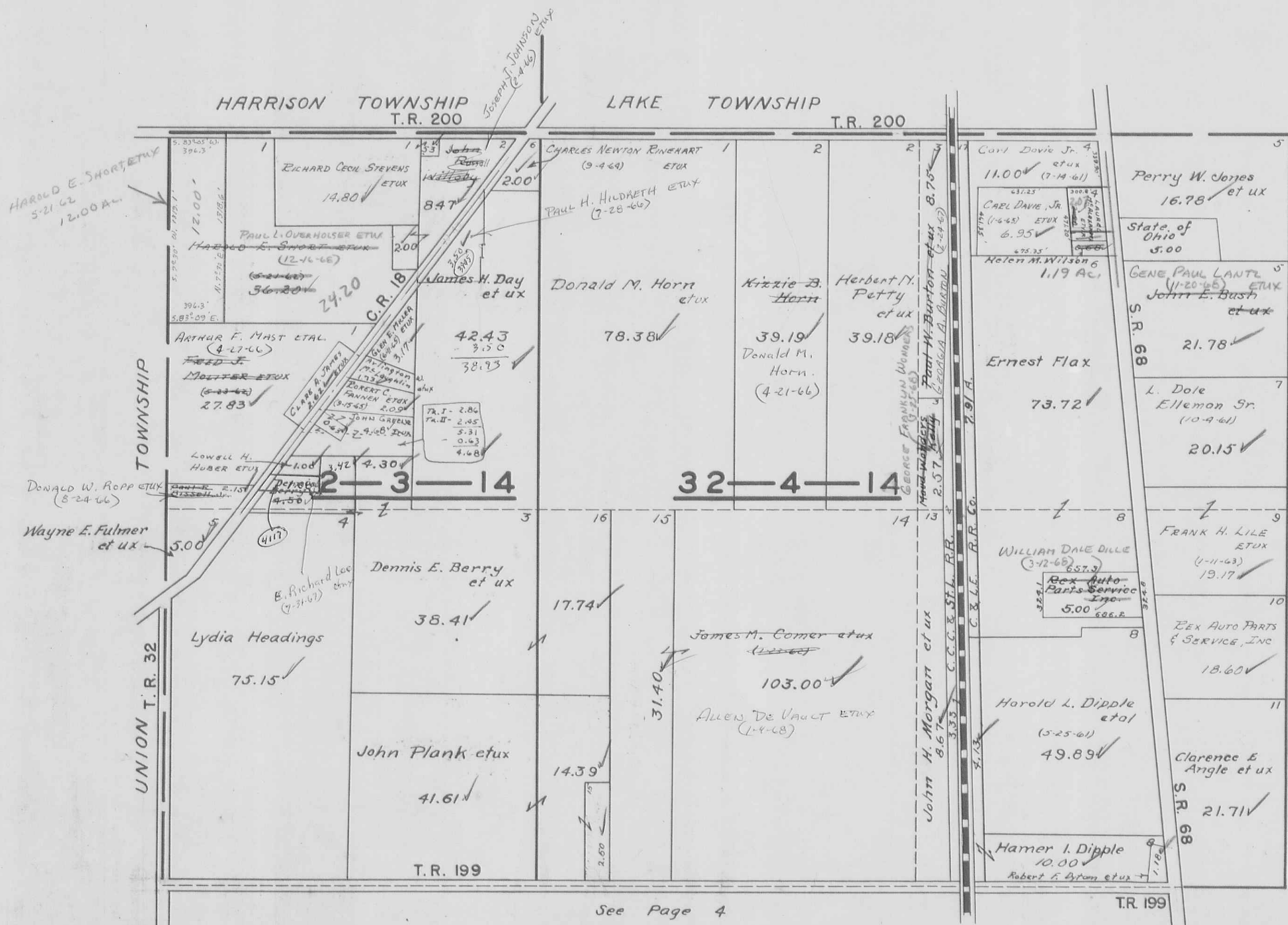
PAGE 2
N.M.S. 5894



SECTION 2 TOWN 3 RANGE 14

SECTION 32 TOWN 4 RANGE 14

SCALE 10 CHAINS TO THE INCH

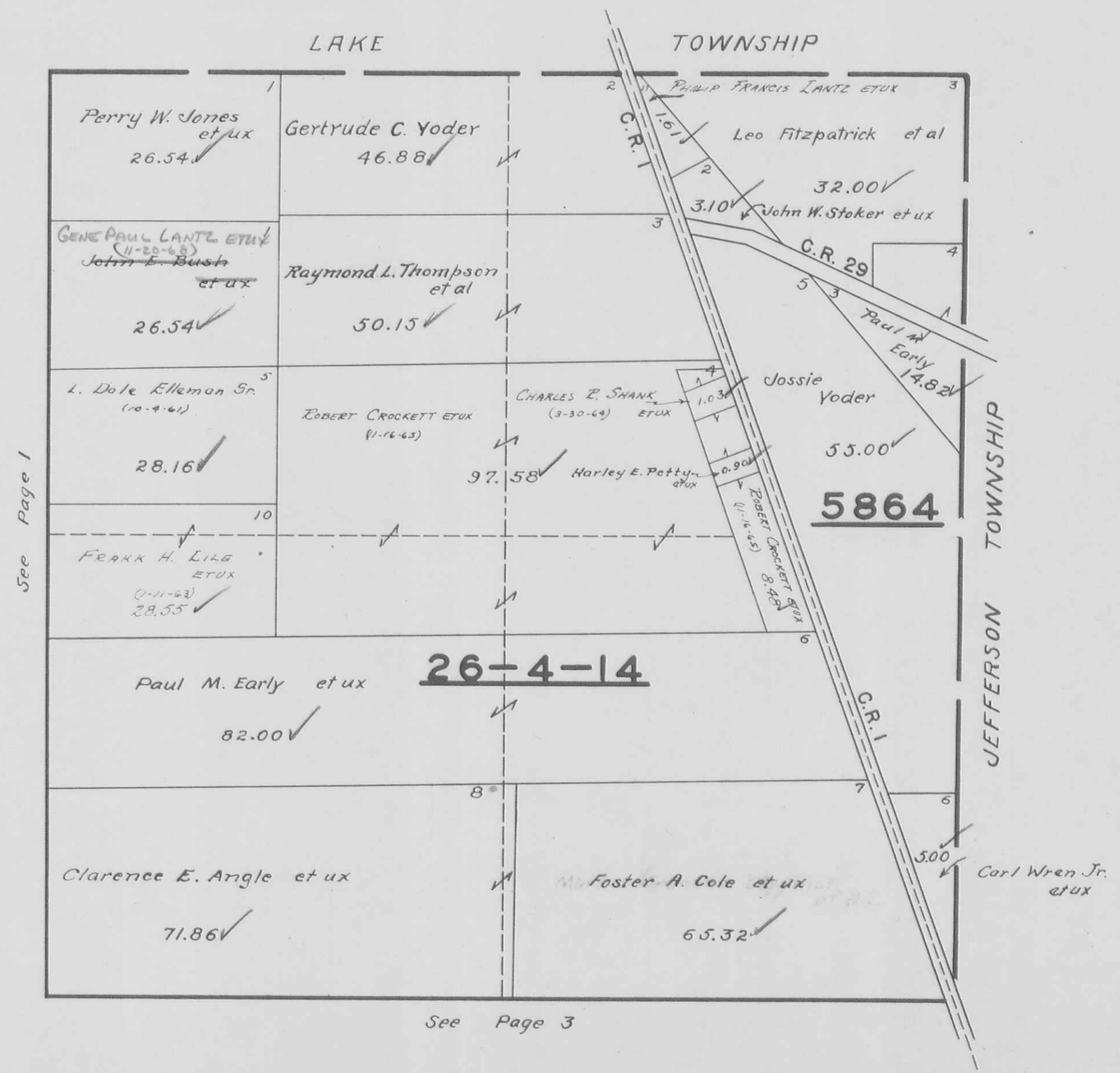


See Page 2

See Page 4

SECTION 26 TOWN 4 RANGE 14
VIRGINIA MILITARY SURVEY 5864

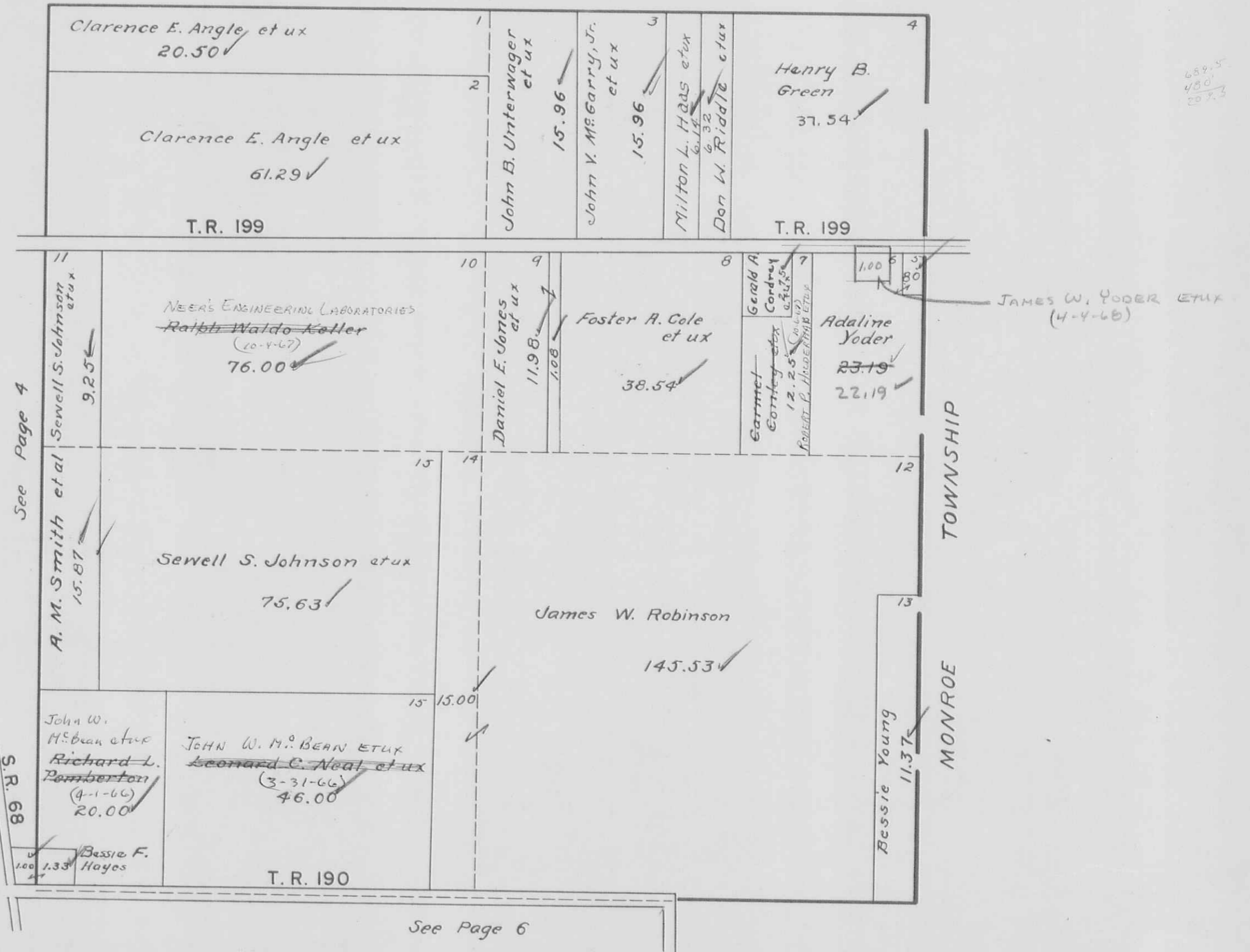
SCALE 10 CHAINS TO THE INCH



SECTION 25 TOWN 4 RANGE 14

SCALE 10 CHAINS TO THE INCH

See Page 2



See Page 4

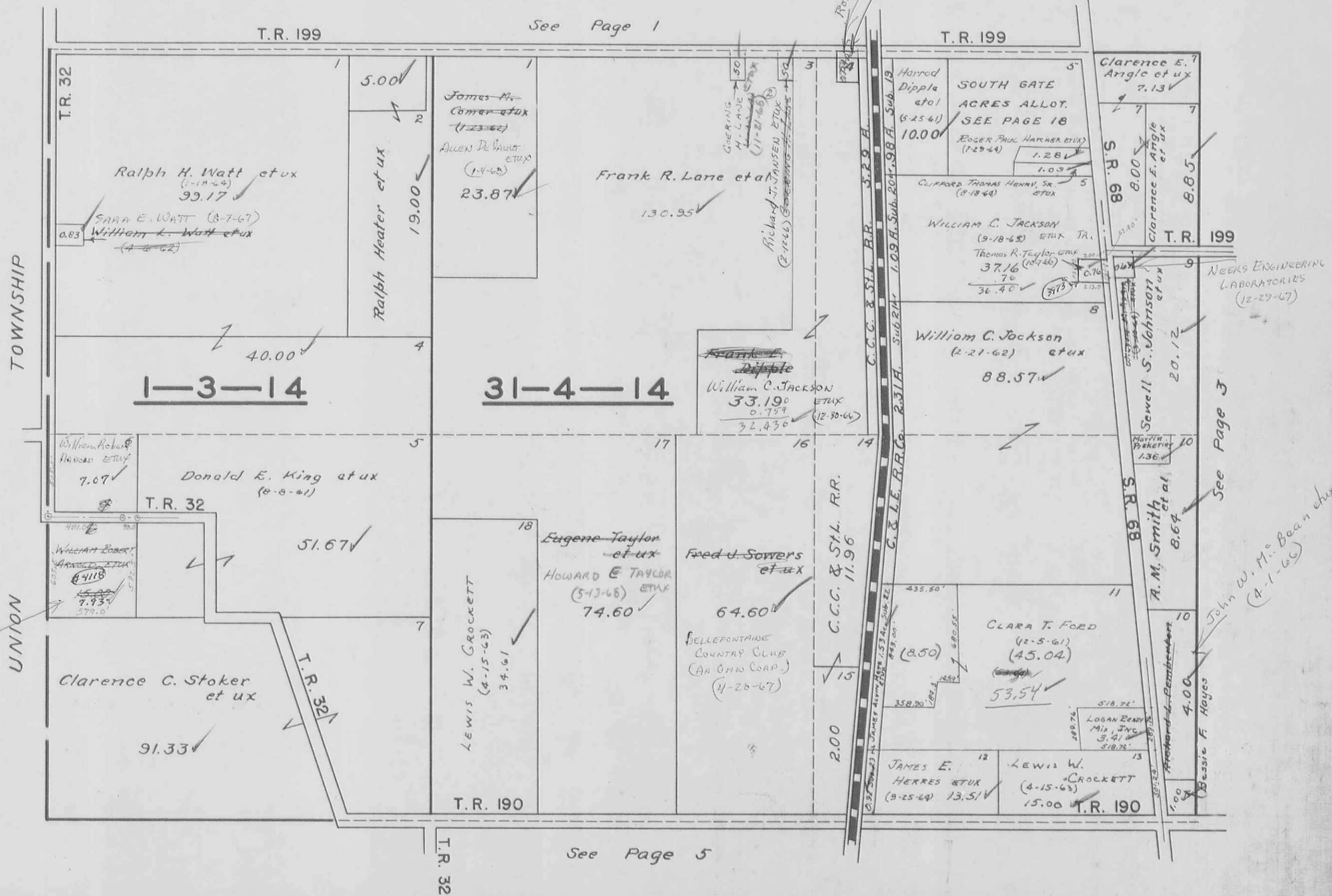
S.R. 89

See Page 6

SECTION 1 TOWN 3 RANGE 14

SECTION 31 TOWN 4 RANGE 14

SCALE 10 CHAINS TO THE INCH



MARY JVALO PETERS (8-18-67)

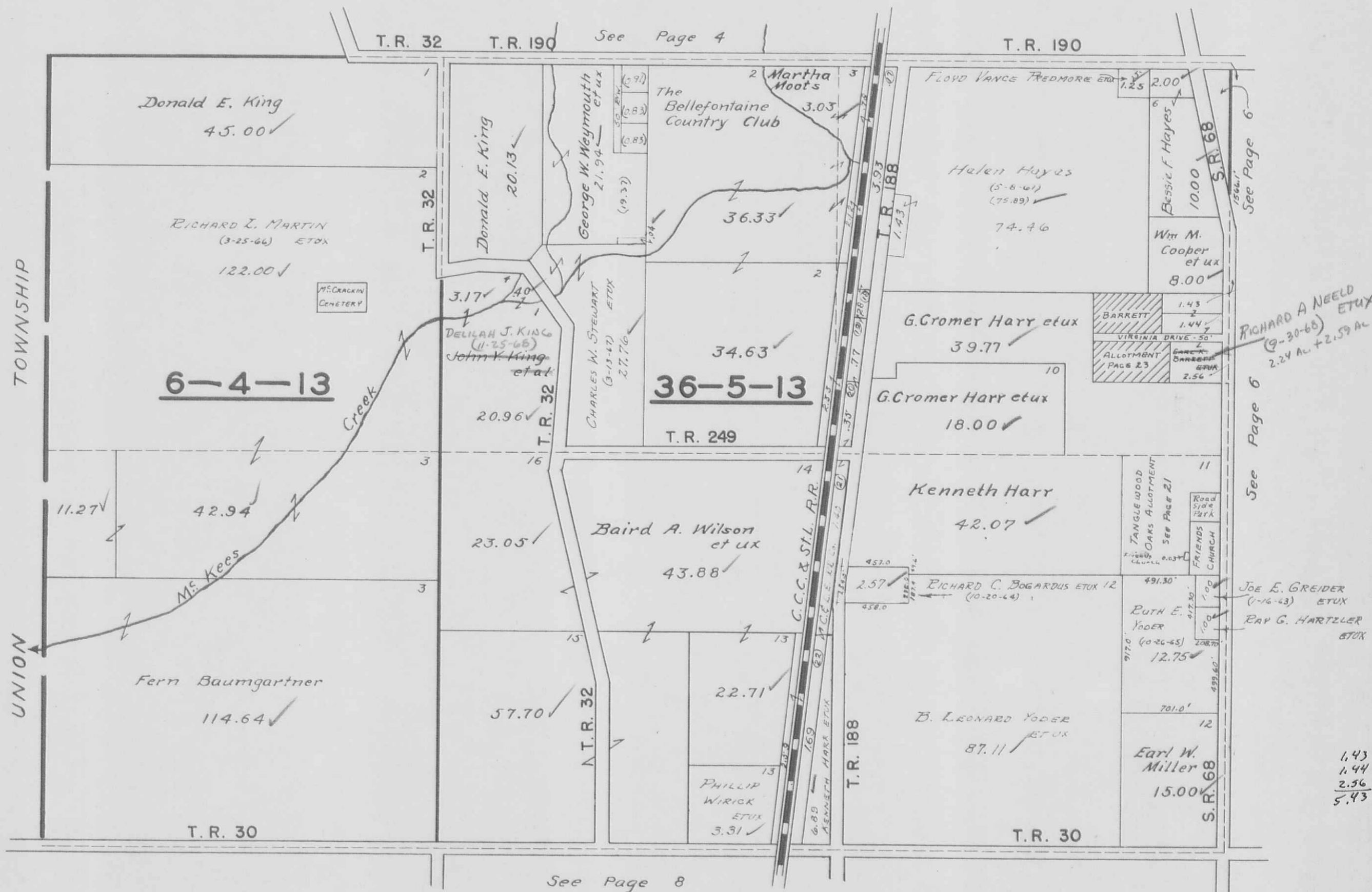
UNION

Robert E. ...
4116
BENNIE M. CHAVINS ET UX
11-28-67

NEERS ENGINEERING LABORATORIES (12-29-67)

See Page 3

John W. M. Bean et ux (4-1-66)



TOWNSHIP

UNION

6-4-13

36-5-13

T.R. 32

T.R. 190

See Page 4

T.R. 190

T.R. 32

T.R. 32

T.R. 30

See Page 8

T.R. 188

T.R. 188

T.R. 188

T.R. 188

S.R. 68

S.R. 68

S.R. 68

S.R. 68

S.R. 68

S.R. 68

S.R. 68

S.R. 68

S.R. 68

S.R. 68

S.R. 68

S.R. 68

S.R. 68

S.R. 68

See Page 6

See Page 6

See Page 6

See Page 6

See Page 6

See Page 6

See Page 6

See Page 6

See Page 6

See Page 6

See Page 6

See Page 6

See Page 6

See Page 6

See Page 6

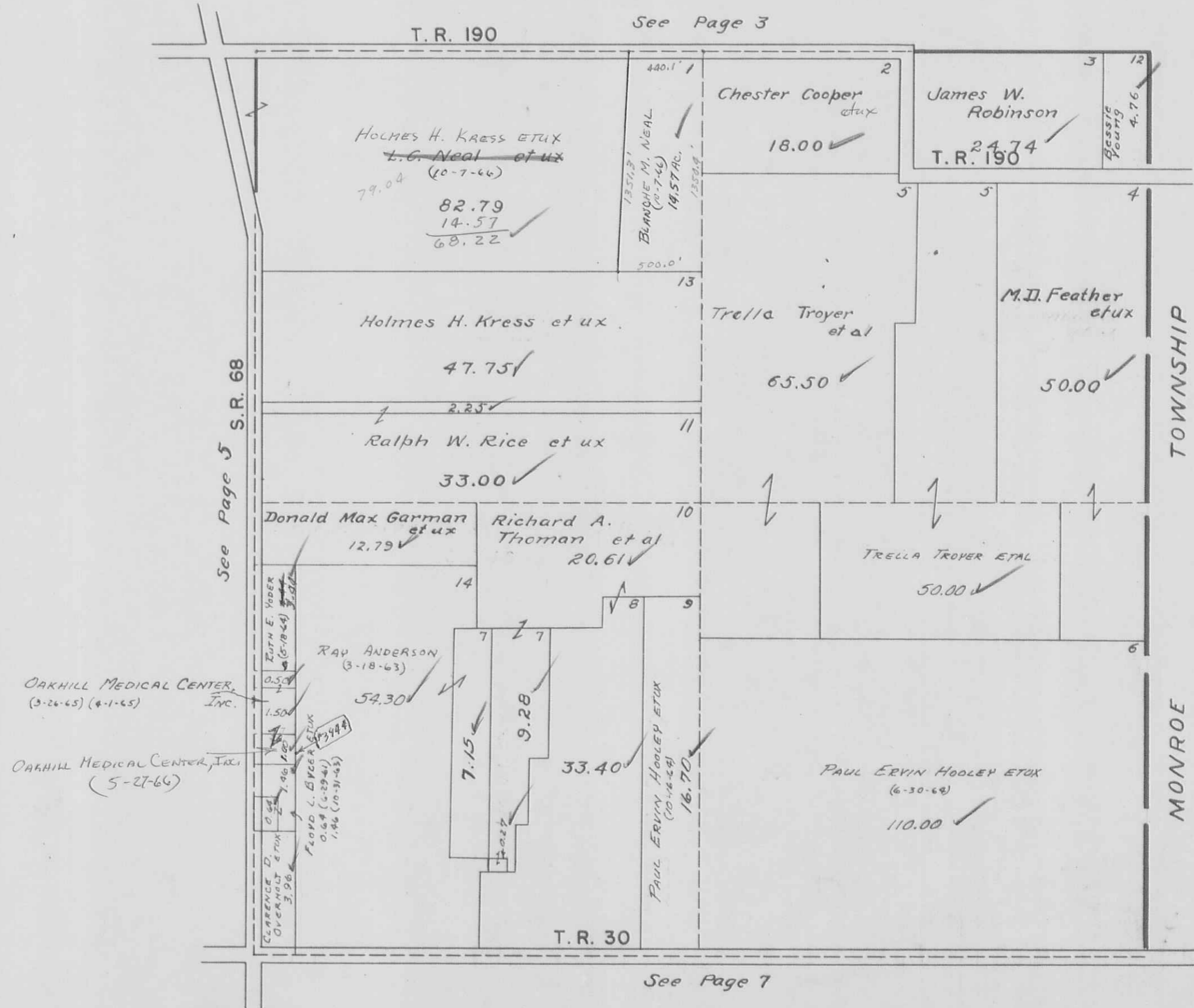
See Page 6

See Page 6

See Page 6

SECTION 30 TOWN 5 RANGE 13

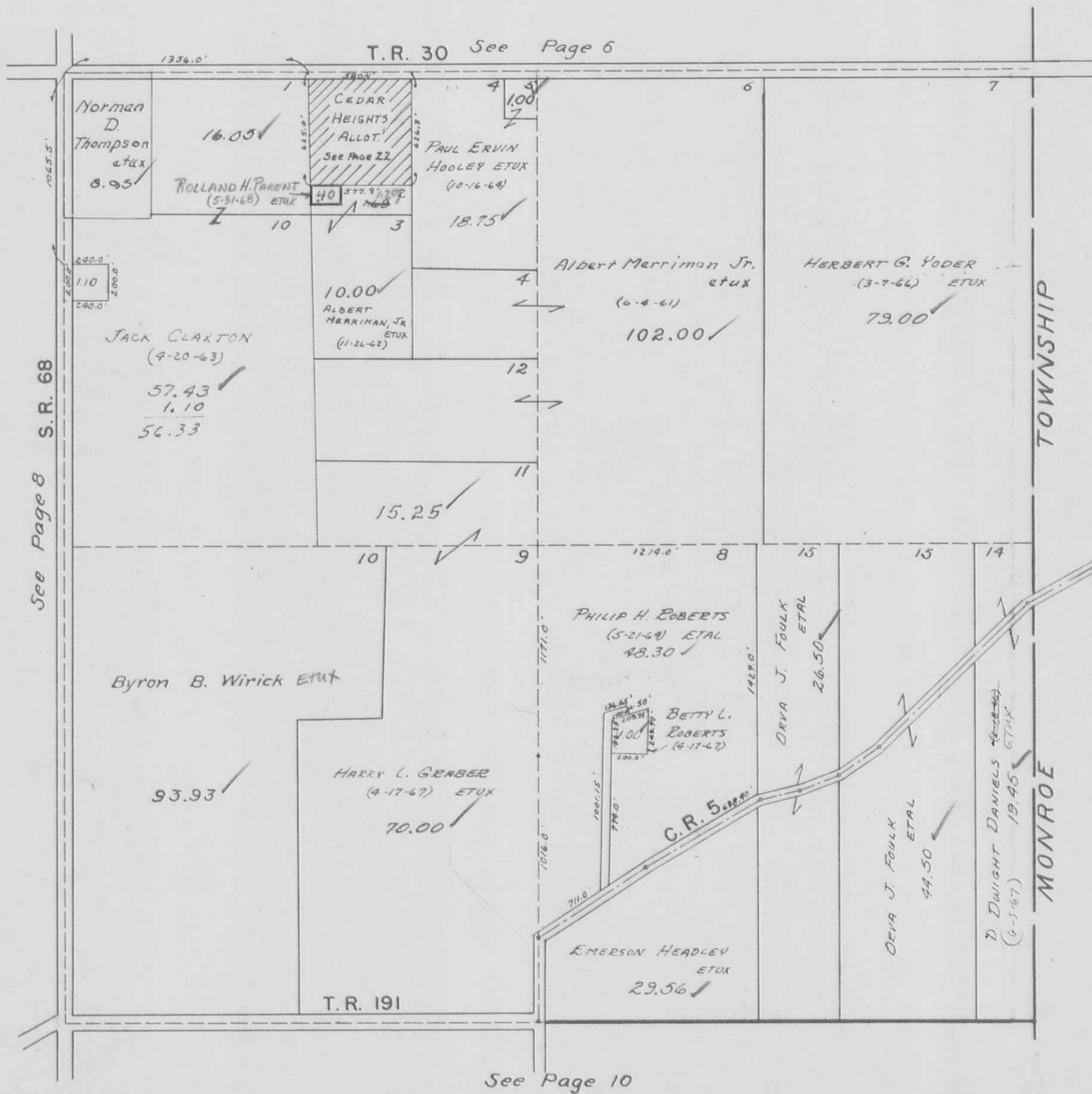
SCALE 10 CHAINS TO THE INCH



82.79
79.04
3.75

SECTION 29 TOWN 5 RANGE 13

SCALE 10 CHAINS TO THE INCH

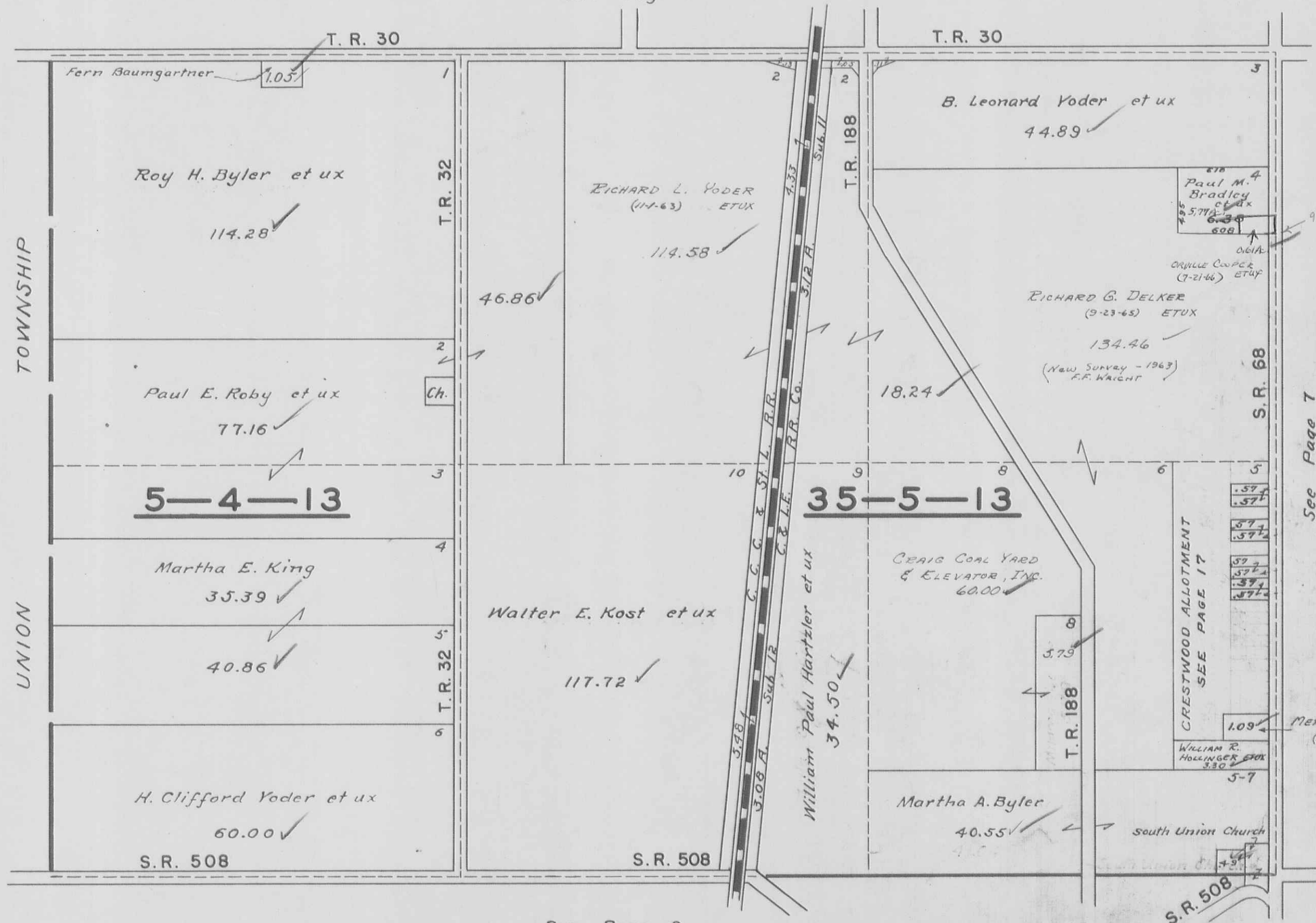


SECTION 5 TOWN 4 RANGE 13

SECTION 35 TOWN 5 RANGE 13

SCALE 10 CHAINS TO THE INCH

See Page 5



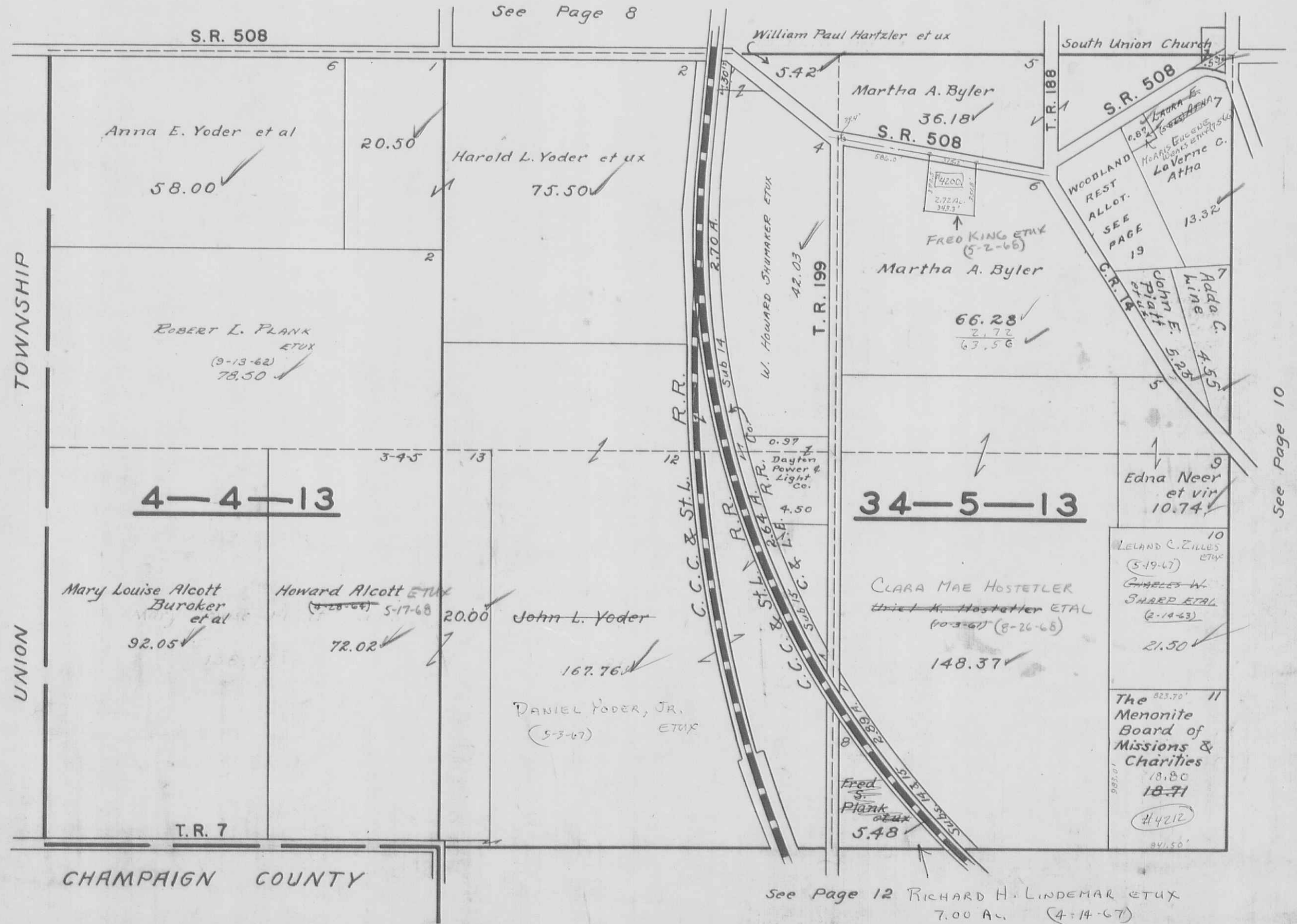
See Page 7

See Page 9

SECTION 4 TOWN 4 RANGE 13

SECTION 34 TOWN 5 RANGE 13

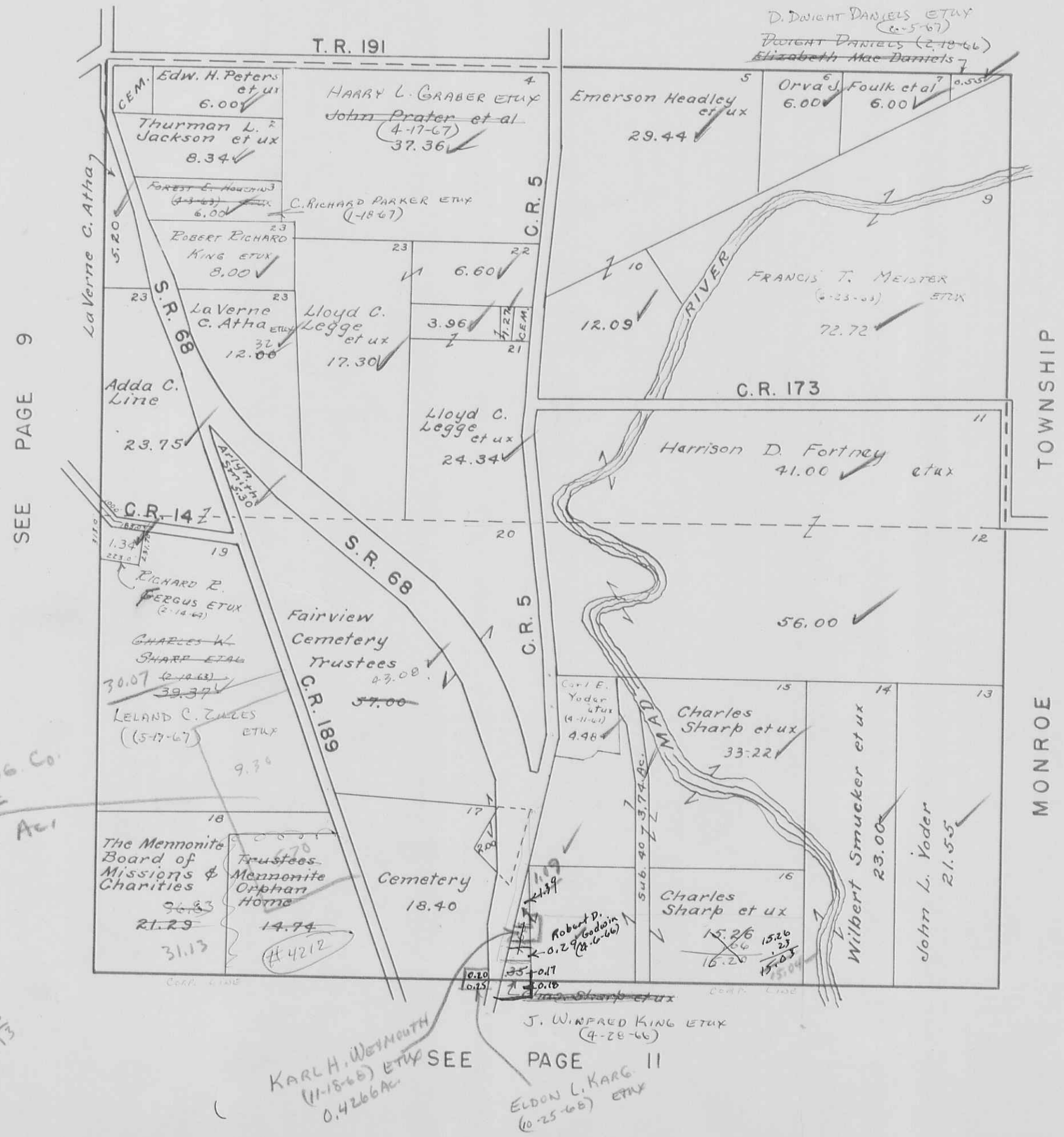
SCALE 10 CHAINS TO THE INCH



SECTION 28 TOWN 5 RANGE 13

SCALE 10 CHAINS TO THE INCH

SEE PAGE 7



SEE PAGE 9

MONROE TOWNSHIP

SEE PAGE 11

$$\begin{array}{r} 39.37 \\ 9.30 \\ \hline 30.07 \end{array}$$

 COLUMBIA BLDG. Co.
 $9.30 + 5.70 = 15.00 \text{ Acs}$

2.39
 1.39
 1.07

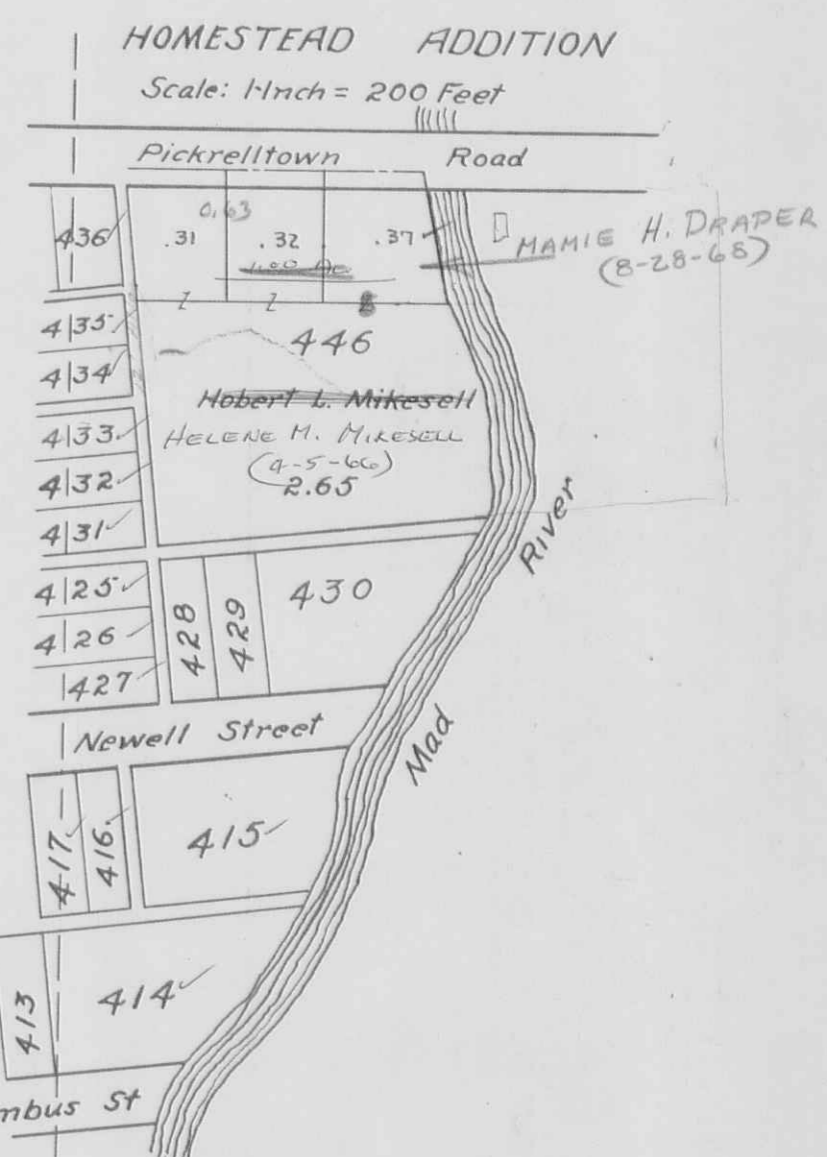
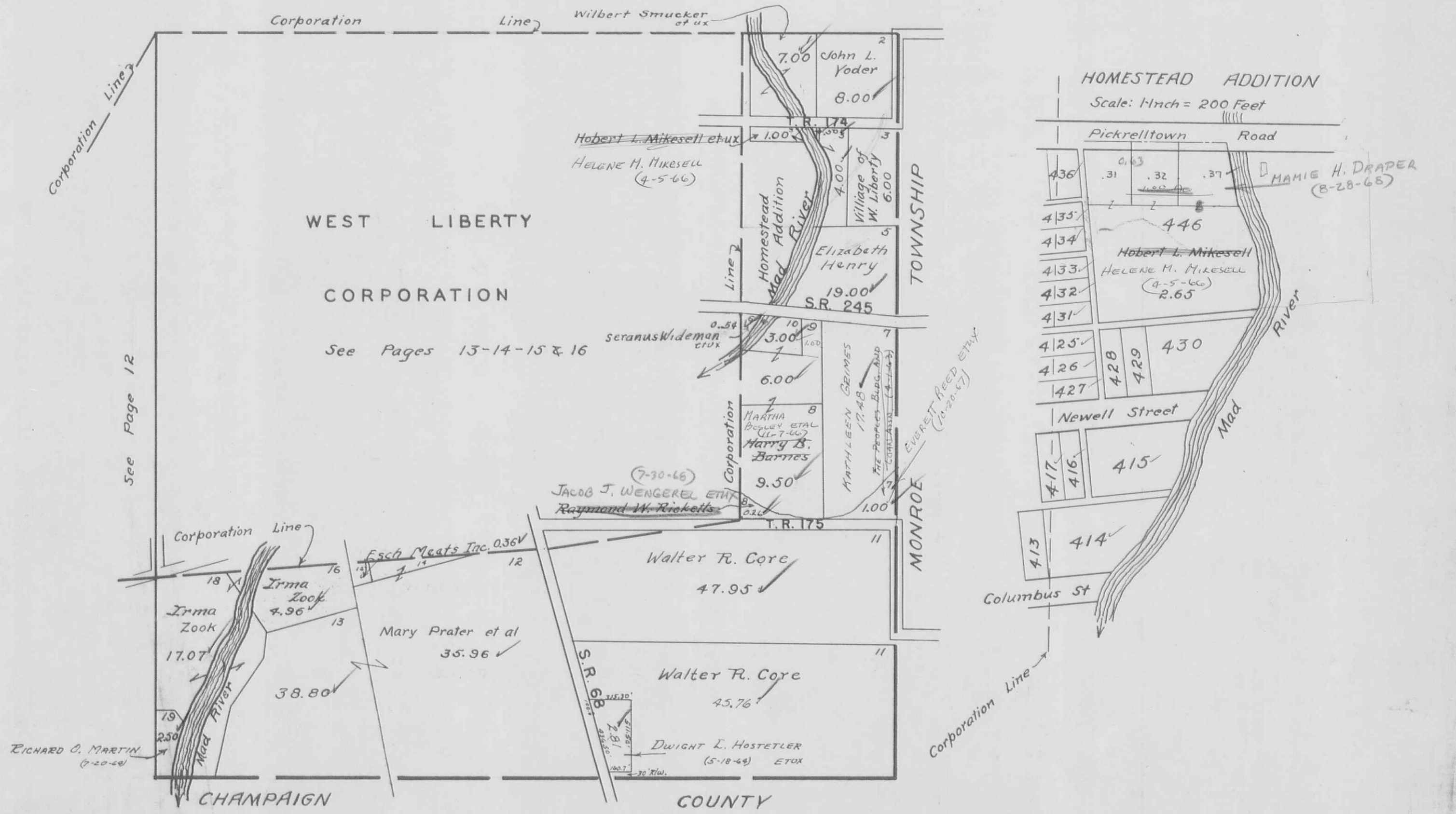
$$\begin{array}{r} 36.83 \\ 5.70 \\ \hline 31.13 \end{array}$$

KARL H. WYOMOUTH
 (11-18-68) ETUX
 0.4266 AC.

SECTION 27 TOWN 5 RANGE 13

SCALE 10 CHAINS TO THE INCH

See Page 10

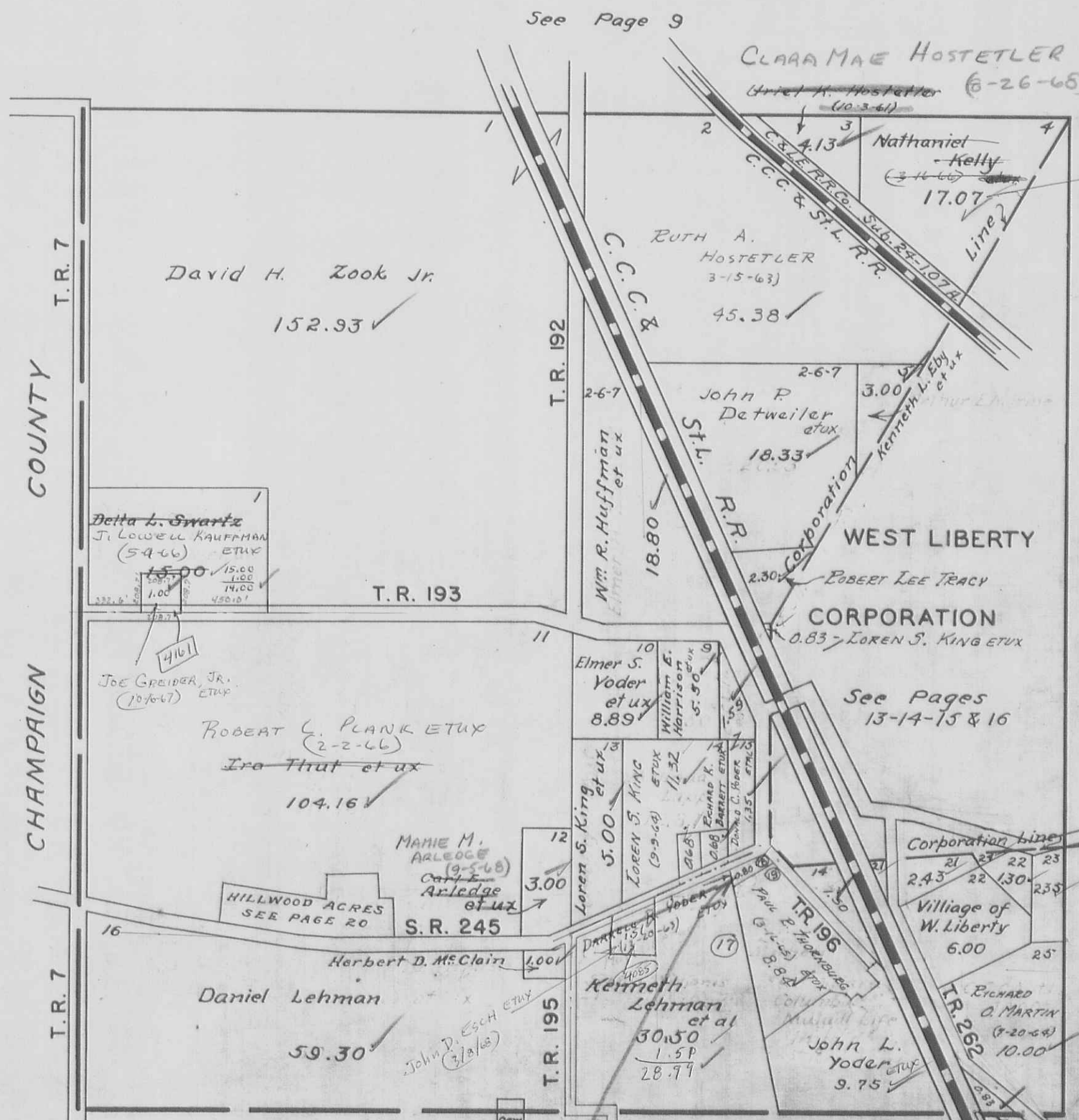


H.E. Dysert

OTTO L. LOCKWOOD et ux - 0.80? (4-18-66)

LIBERTY TOWNSHIP
SECTION 33 TOWN 5 RANGE 13

SCALE 10 CHAINS TO THE INCH



See Page 9

CLARA MAE HOSTETLER ETAL
Arlet A. Hostetler (10-3-61)
(8-26-65)

Phyllis IGORE ETAL
(8-11-67)

T.R. 7
COUNTY
CHAMPAIGN
T.R. 7

SEE PAGE 11

11.32
26
12.06

12.19
26
12.45

11.32
26
12.06

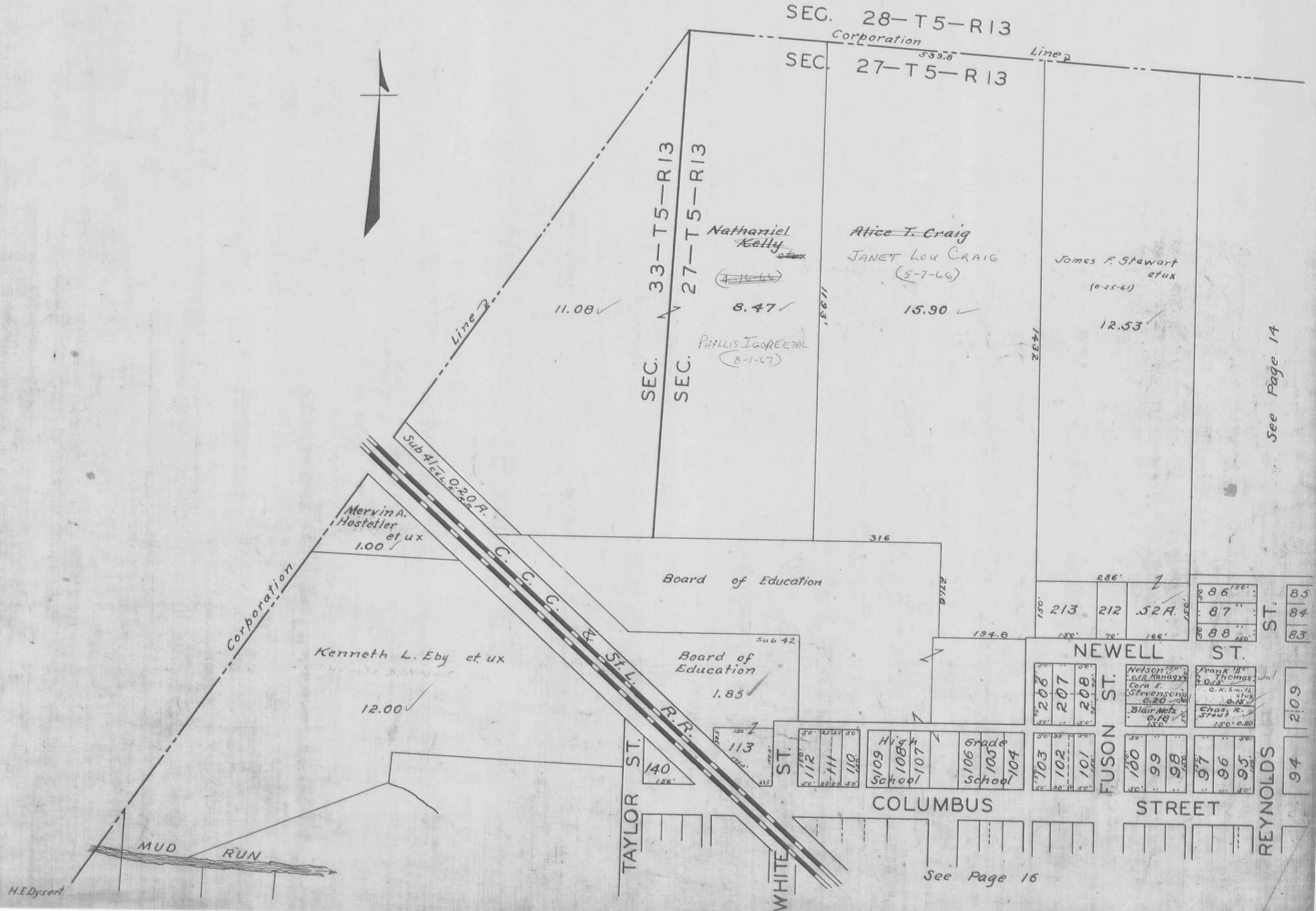
| Sub | Name | Acres |
|-----|------------------------------|-------|
| 14 | ESCH'S MEATS INC. | 1.50 |
| 21 | ARLENE SMITH (4-18-62) | 0.75 |
| 21 | Joseph L. Mast Jr. Trustee | 2.43 |
| 22 | Joseph L. Mast Jr. Trustee | 1.30 |
| 23 | AVALON M. WOODARD (10-20-63) | 2.35 |
| 24 | ESCH'S MEATS, INC. (7-27-62) | 0.20 |

FRANKLIN SCOTT
SHOFFNER ETAL
(11-26-66)

HERMAN B. LOCKWOOD ETAL

LIBERTY TOWNSHIP
 WEST LIBERTY CORPORATION

SCALE 200 FEET TO THE INCH



See Page 14

See Page 16

WEST LIBERTY CORPORATION

SCALE 200 FEET TO THE INCH

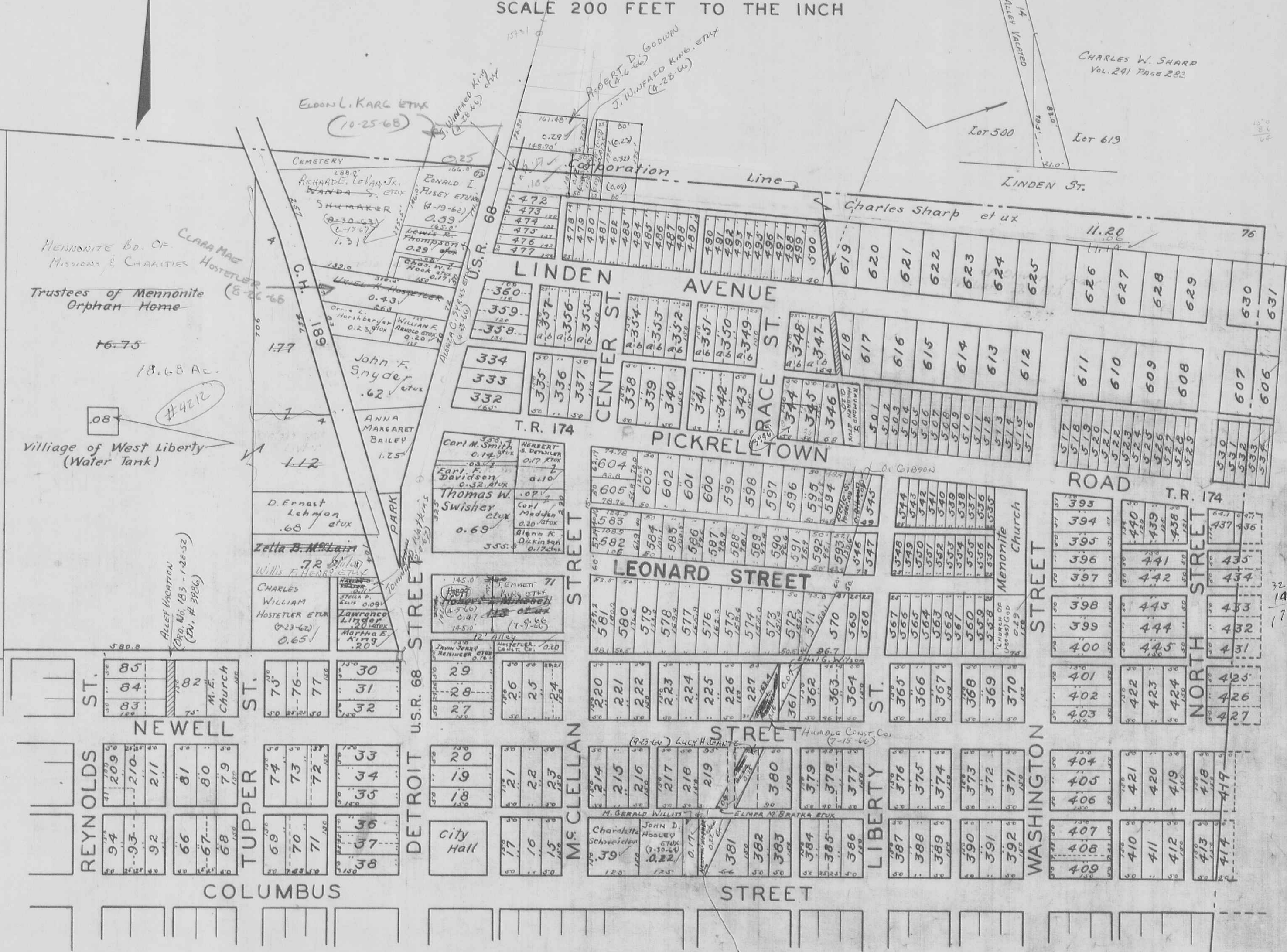
15 31.0
4+29.4
1-01.6

CHARLES W. SHARP
Vol. 241 PAGE 282

MEMORITE Bd. OF
MISSIONS & CHARITIES
Trustees of Mennonite
Orphan Home

Village of West Liberty
(Water Tank)

See Page 13



See Page 15

H.E. Dysert

1938.70
177.70

MARTHA A. KAUFFMAN
(10-5-67)

851

87

320
105
75

WEST LIBERTY CORPORATION

SCALE 200 FEET TO THE INCH

See Page 14

THOMAS M. DUNHAM ETUX (8-19-66)

See Page 11



See Page 16

H.E. Dysert

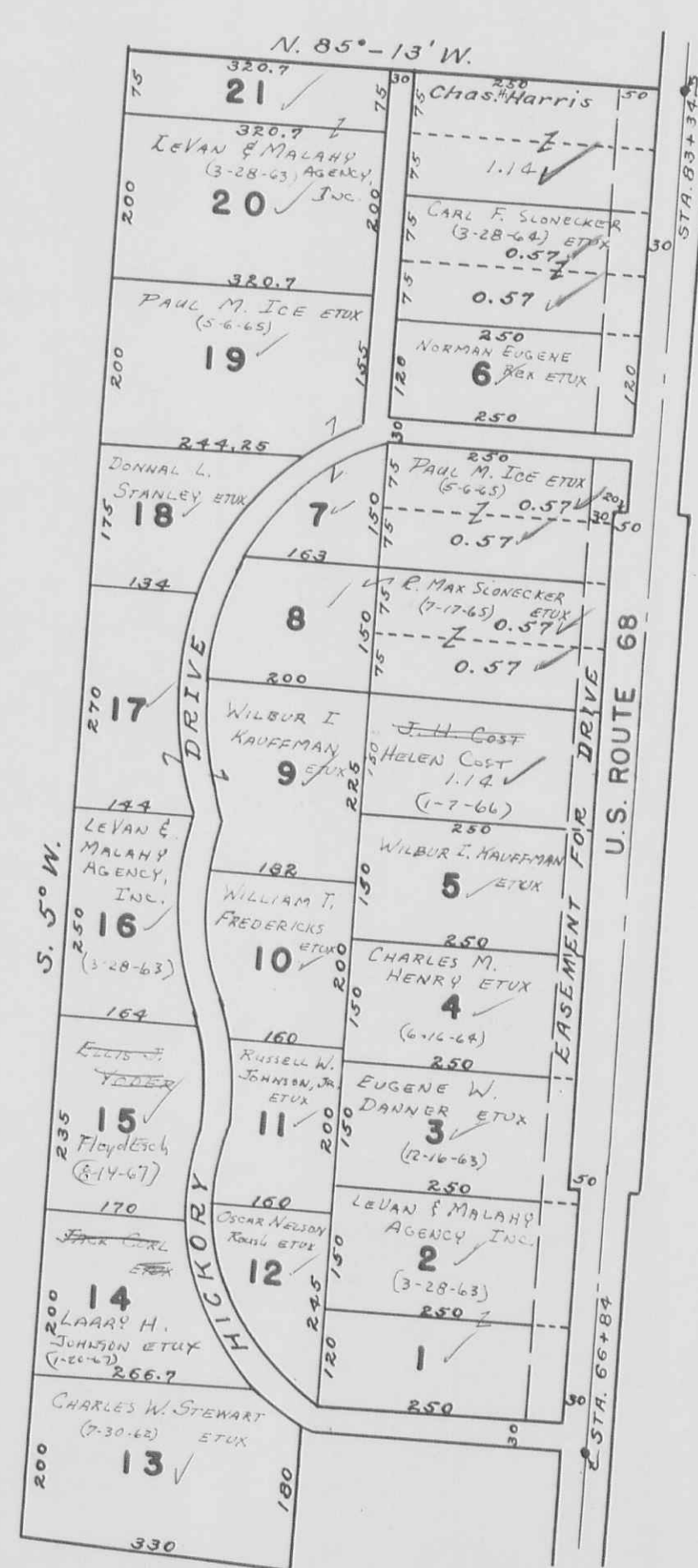
21

X 1/1

11

CRESTWOOD ALLOTMENT
LIBERTY TOWNSHIP

SEC. 35 - T. 5 - R. 13



SCALE: 1" = 200'

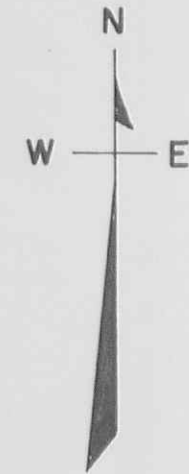
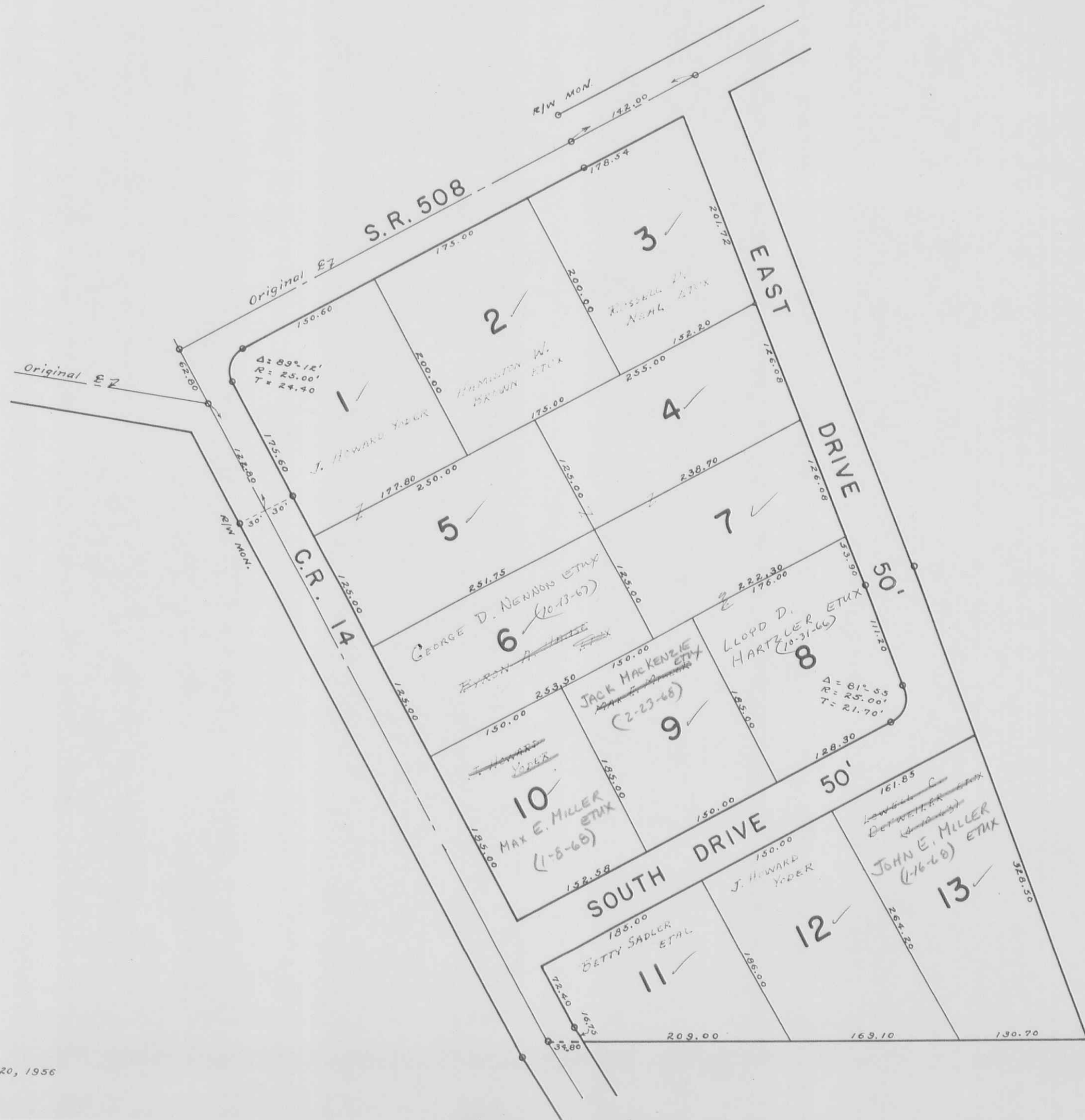
Note;
See Plat Book 4D, Page 8
Logan Co. Recorders Office

SOUTH GATE ACRES

SCALE: 1 INCH = 100 FEET



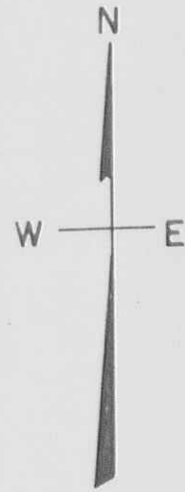
LIBERTY TOWNSHIP
 SECTION 34 TOWN 5 RANGE 13
 WOODLAND REST ALLOTMENT
 SCALE: 1 INCH = 100 FEET



SECTION 33 TOWN 5 RANGE 13

SCALE 1 INCH = 100 FEET

HILLWOOD ACRES ALLOTMENT



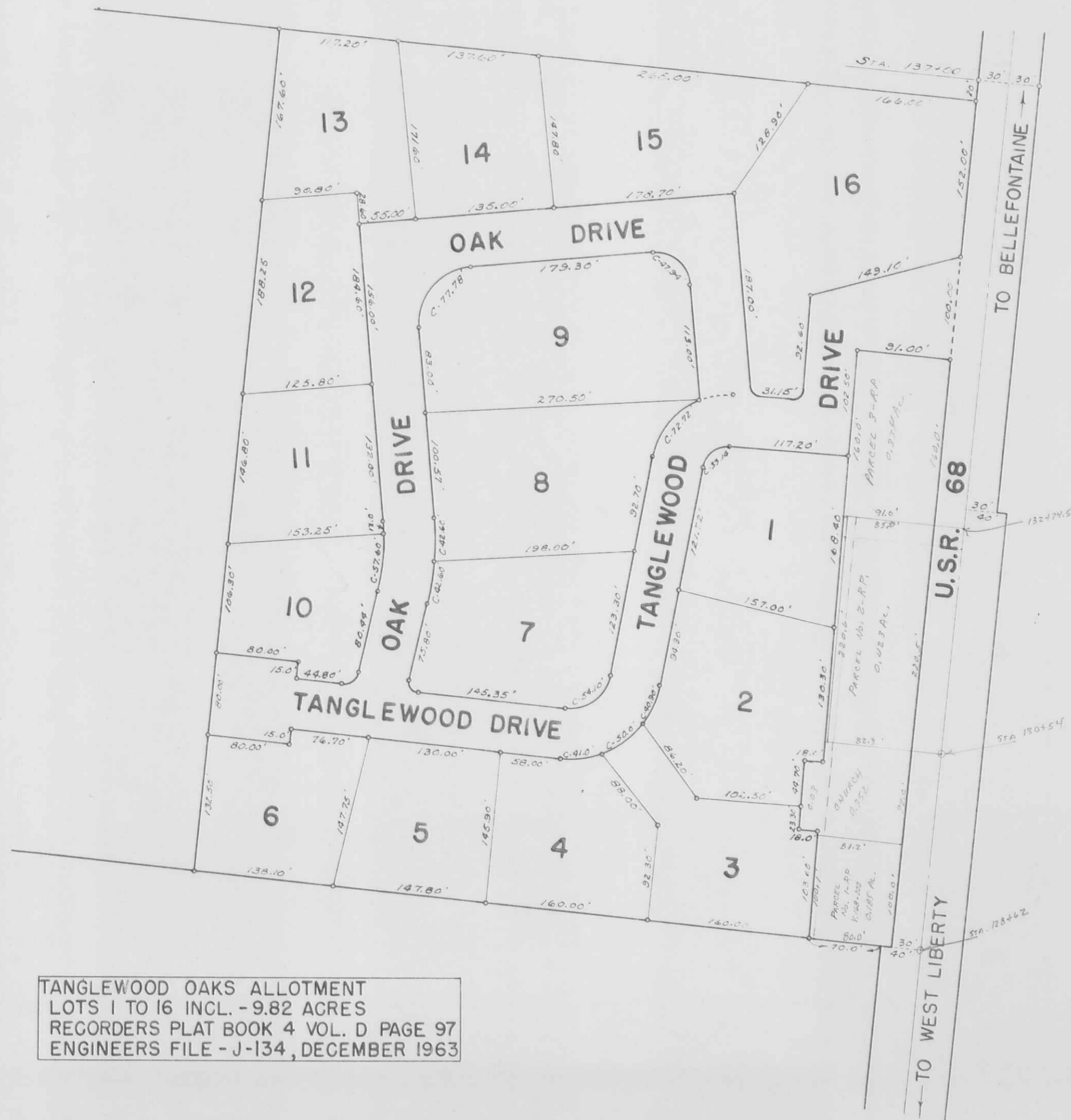
Ira Thut et ux



LIBERTY TOWNSHIP TANGLEWOOD OAKS ALLOTMENT

SECTION 36 TOWN 5 RANGE 13

SCALE: 1" = 100'



TANGLEWOOD OAKS ALLOTMENT
 LOTS 1 TO 16 INCL. - 9.82 ACRES
 RECORDERS PLAT BOOK 4 VOL. D PAGE 97
 ENGINEERS FILE - J-134, DECEMBER 1963

| LOT | NAME | DATE |
|-----|---------------------------|------|
| 1 | ORRIE L. HARSHBARGER ETAL | |
| 2 | " | |
| 3 | " | |
| 4 | " | |
| 5 | " | |
| 6 | " | |
| 7 | " | |
| 8 | " | |
| 9 | " | |
| 10 | " | |
| 11 | " | |
| 12 | " | |
| 13 | " | |
| 14 | " | |
| 15 | HERMAN LOCKWOOD ETUX | |
| 16 | ORRIE L. HARSHBARGER ETAL | |

All lots -

LIBERTY TOWNSHIP
CEDAR HEIGHTS ALLOTMENT
SECTION 29 TOWN 5 RANGE 13

SCALE: 1" = 100'



| LOT | NAME | DATE |
|-----|------------------------|---------|
| 1 | | |
| 2 | DARYL R. MARSH ETUX | 6-7-66 |
| 3 | | |
| 4 | | |
| 5 | DARYL R. MARSH ETUX | 6-7-68 |
| 6 | | |
| 7 | | |
| 8 | | |
| 9 | ROLLAND A. PARENT ETUX | 5-31-68 |

CEDAR HEIGHTS ALLOTMENT
 LOTS 1 TO 9 INCL. - 8.31 ACRES.
 RECORDERS PLAT BOOK 6 VOL. F PAGE 16.
 ENGINEERS FILE - J-186, JULY 1967.

DRAWN: OCTOBER 17, 1967.
 BY DANIEL E. GILBERT, T.M.D.

LIBERTY TOWNSHIP

BARRETT ALLOTMENT

SECTION 36 TOWN 5 RANGE 13

SCALE: 1" = 100'



| LOT | NAME | DATE |
|-----|----------------------|--------|
| 1 | CARL K. BARRETT ETUX | |
| 2 | " | |
| 3 | " | |
| 4 | " | |
| 5 | " | |
| 6 | JOE E. KAUFFMAN ETUX | 7-3-66 |

BARRETT ALLOTMENT
 LOTS 1 TO 6 INCL. - 7.17 ACRES.
 RECORDERS PLAT BOOK 6 VOL. F PAGE 20.
 ENGINEERS FILE - J-189, SEPTEMBER 1967.

DRAWN: OCTOBER 18, 1967.
 BY DANIEL E. GILBERT, T.M.D.