

**LAKE**

**TOWNSHIP**

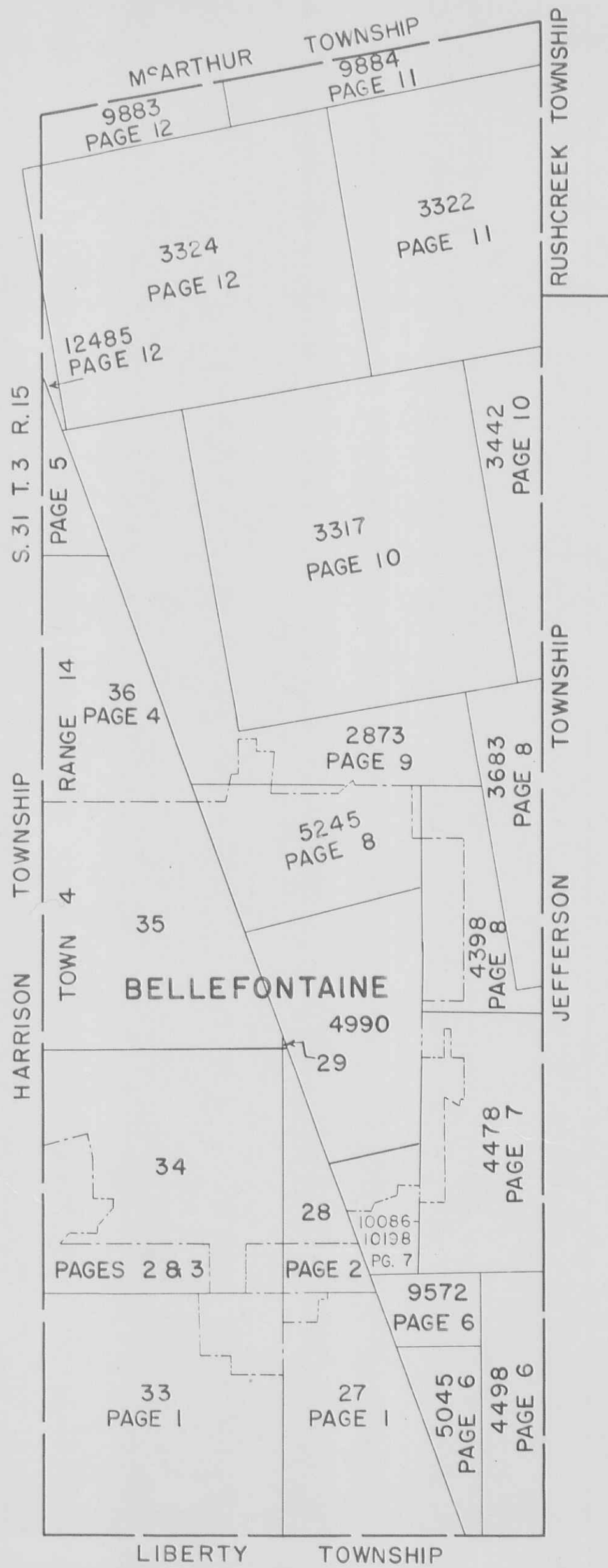
**1966**

INDEX

SECTION	TOWN	RANGE	PAGE	VIRGINIA MILITARY SURVEY	PAGE
27	4	14	1	2873	9
27	4	14	PART 16	3317	10
28	4	14	2	3322	11
33	4	14	1	3324	12
34	4	14	2	3442	10
34	4	14	PART 3	3683	8
36	4	14	4	4399	8
31	3	15	5	4478	7
				4498	6
				5045	6
				5045 PART	16
				5245	8
				9572	6
				9883	12
				9884	11
				{ 10086	7
				{ 10198	
				12485	12

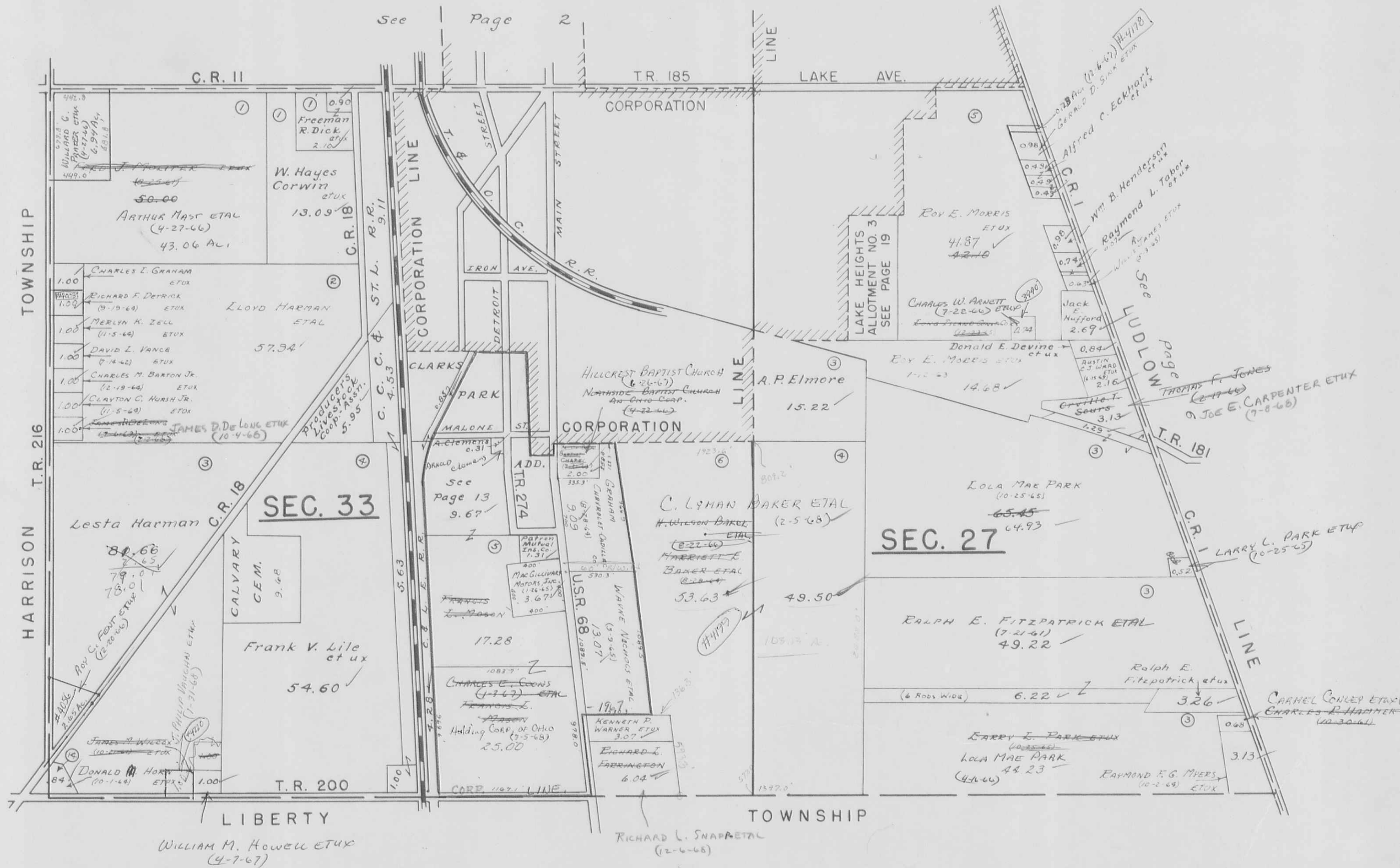
ALLOTMENTS & SUBDIVISIONS	PAGE
CAMPBELL ALLOTMENT	14
CLARKS PARK ADDITION (NORTH PART)	13
HEIDI ROAD ALLOTMENT	18
HOLLY HILL SUBDIVISION (VACATED - 1965)	17
KROUSE ALLOTMENT	7
LAKE HEIGHTS ALLOTMENT NO. 3	19
WOODLAND SUBDIVISION	15

CORRECTED TO:  
January 1, 1966  
~~JANUARY 1, 1967~~  
~~JANUARY 1, 1968~~  
JANUARY 1, 1969



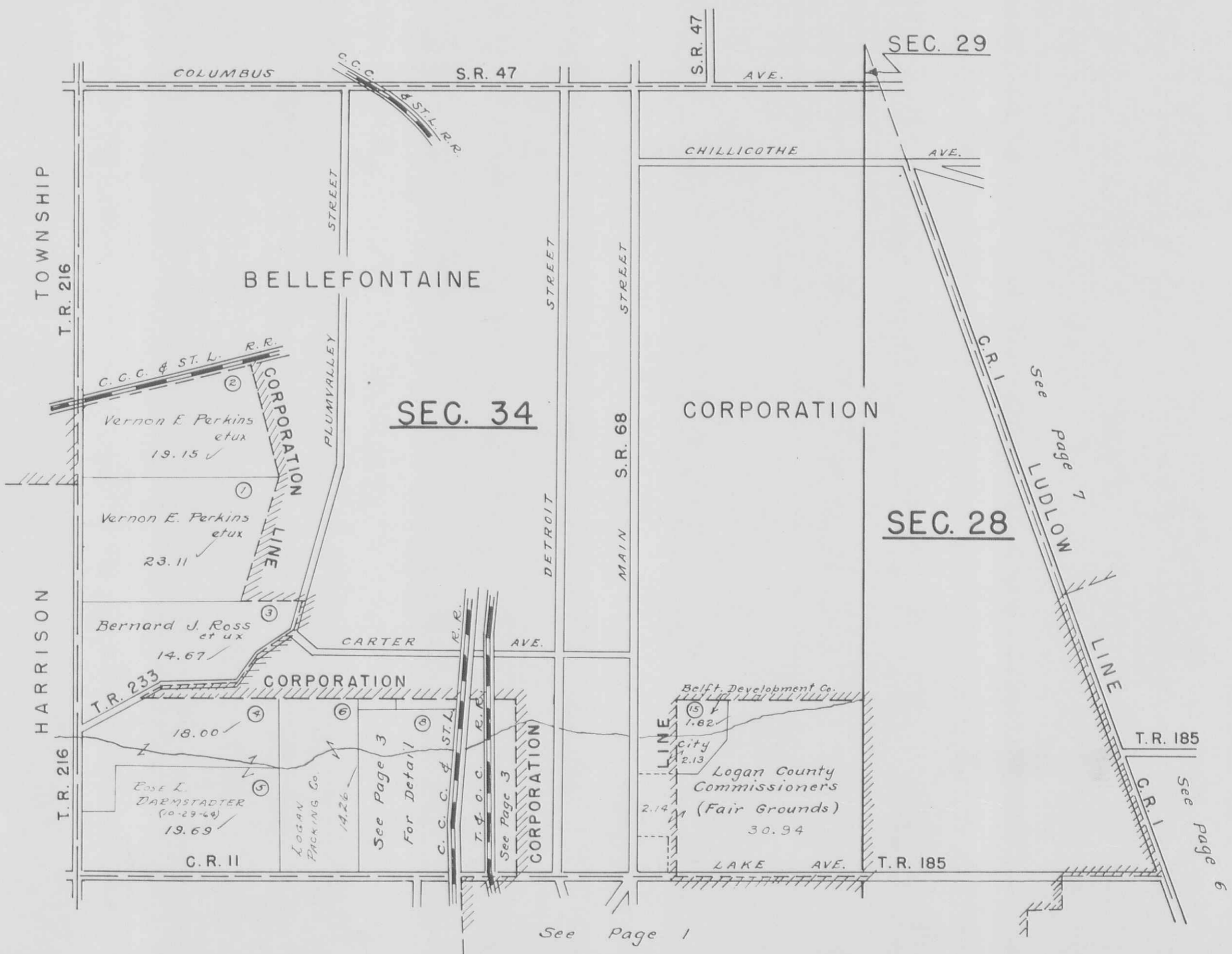
SECTION 27 TOWN 4 RANGE 14  
SECTION 33 TOWN 4 RANGE 14

SCALE 10 CHAINS = 1 INCH



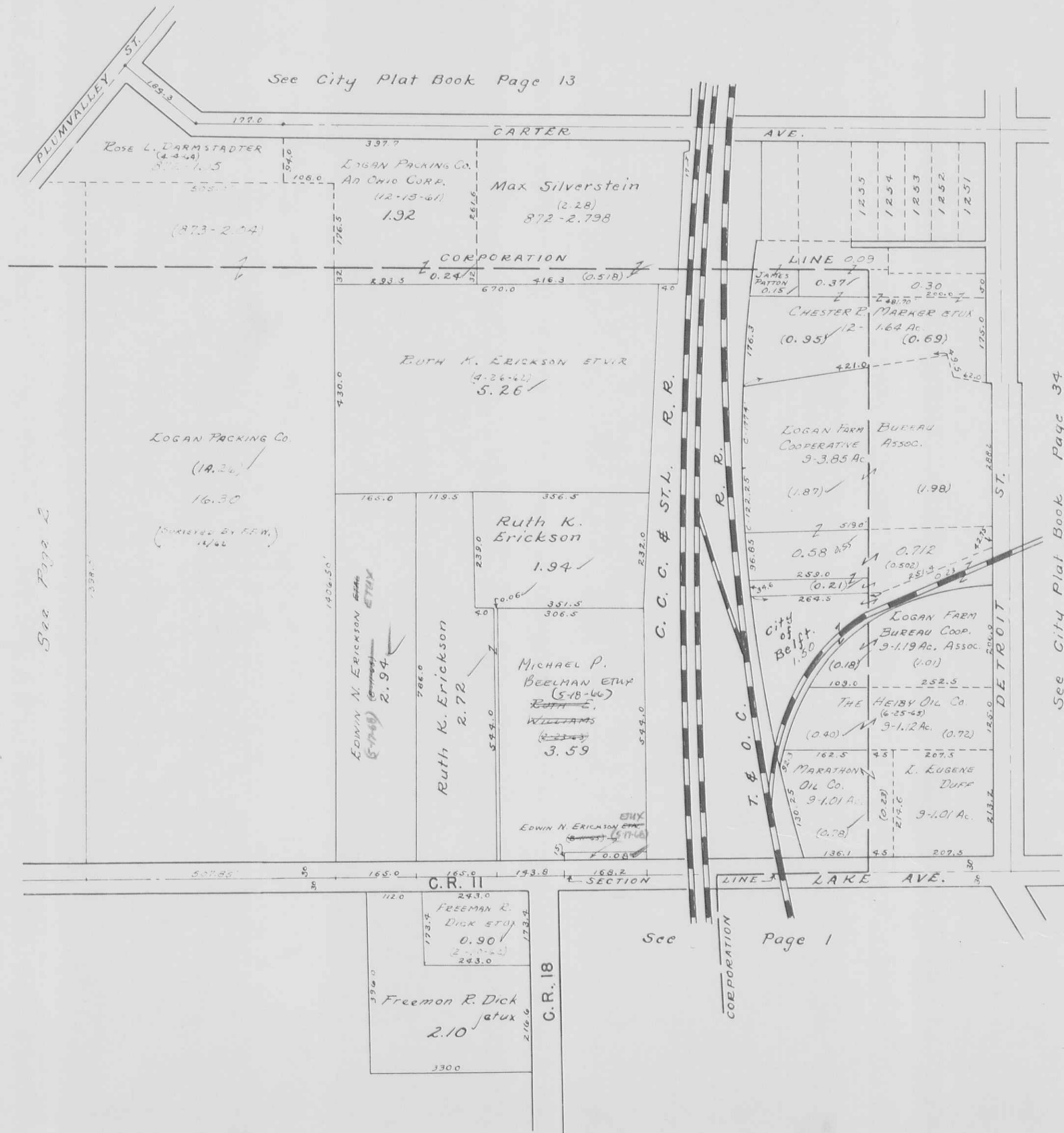
SECTION 28 TOWN 4 RANGE 14  
 SECTION 29 TOWN 4 RANGE 14  
 SECTION 34 TOWN 4 RANGE 14

SCALE 10 CHAINS = 1 INCH



LAKE TOWNSHIP  
SECTION 34 TOWN 4 RANGE 14 (PART)

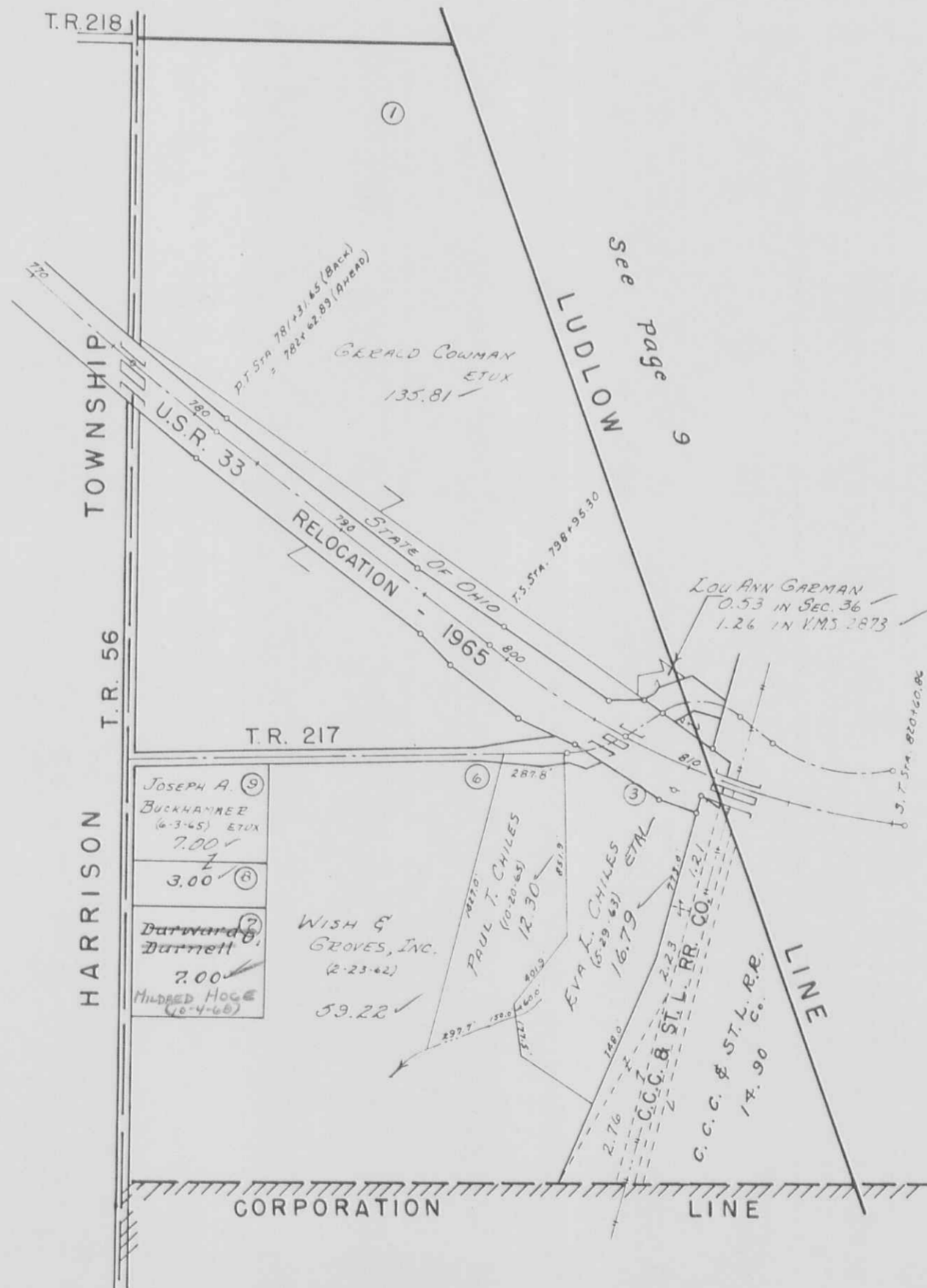
SCALE : 1 INCH = 200 FEET



LAKE TOWNSHIP  
SECTION 36 TOWN 4 RANGE 14

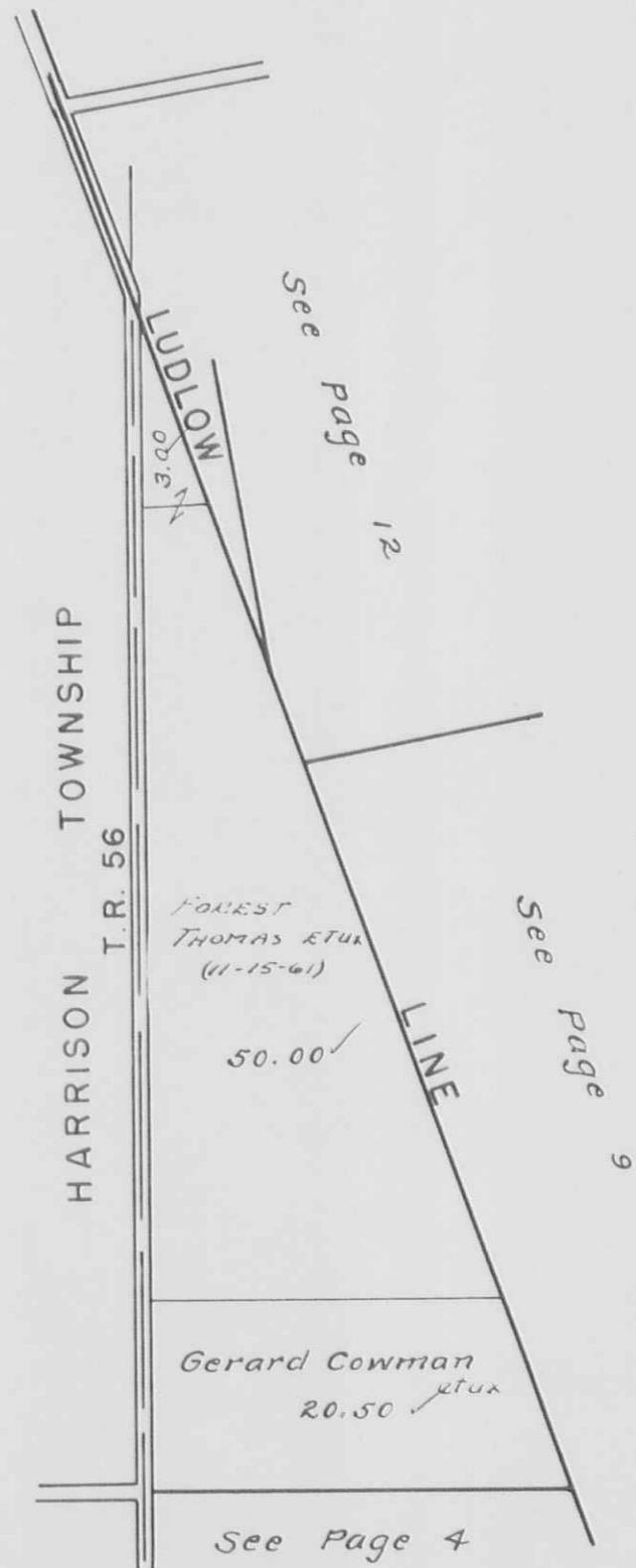
SCALE 10 CHAINS = 1 INCH

See Page 5



SECTION 31 TOWN 3 RANGE 15

SCALE 10 CHAINS = 1 INCH



Oct. 10, 1960  
H.E.D.



LAKE TOWNSHIP  
 VIRGINIA MILITARY SURVEYS

4498  
 5045  
 9572

SCALE 10 CHAINS = 1 INCH

69.12  
 74.23  
 72.51  
 76.57



12.00  
 6.26  
 54.27



LAKE TOWNSHIP  
 VIRGINIA MILITARY SURVEYS

3683  
 4399  
 4990 PT.  
 5245

SCALE 10 CHAINS = 1 INCH



- V.M.S. 5245
- A. -0.81 PT. -
  - B. -0.84 - *Jessie M. Sickles (11-23-62)*
  - C. -0.12 - *Mary J. Jacobs*
  - D. -1.08 - *Bellefontaine Corp. (10-29-61)*
  - E. -1.53 - *Clifford H. Hertenstein (4-23-57)*
  - F. -1.13 - *Robert L. Brackney (10-11-63)*
- V.M.S. 3683
- A. -0.90 - *John M. Elliott et ux (10-20-67)*
  - B. -1.20 - *Paul T. Chilesy*
  - C. -0.88 - *Lee C. Hammond et ux*
  - D. -1.32 - *James G. Kennedy et ux*

Nov. 3, 1960  
 H.E.D.

See Page 7

See Page 10

See Page 9

TOWNSHIP

JEFFERSON

BELLEFONTAINE CORPORATION

CORPORATION

BELLEFONTAINE CORPORATION

CORP.



VIRGINIA MILITARY SURVEYS

3317  
3442

SCALE 10 CHAINS = 1 INCH



NOV. 2, 1960  
H. S. D.

See Page 12

T.R. 219

See Page 11

T.R. 219

See Page 9

T.R. 217

See Page 9

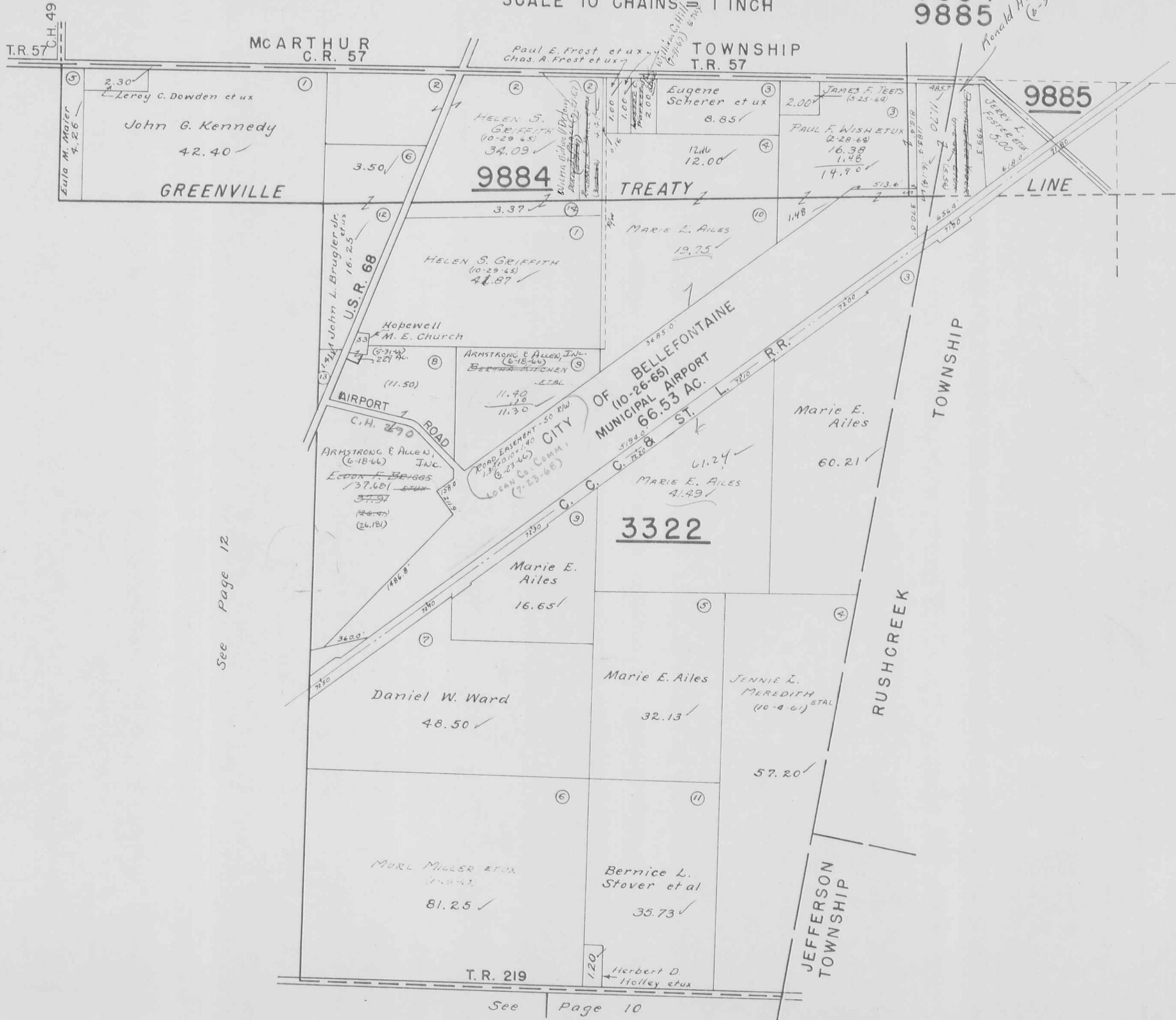
See Page 8

See Page 15

LAKE TOWNSHIP  
 VIRGINIA MILITARY SURVEYS

3322  
 9884  
 9885

SCALE 10 CHAINS = 1 INCH



See Page 12

See Page 10

Oct. 21, 1960  
 H. E. D.

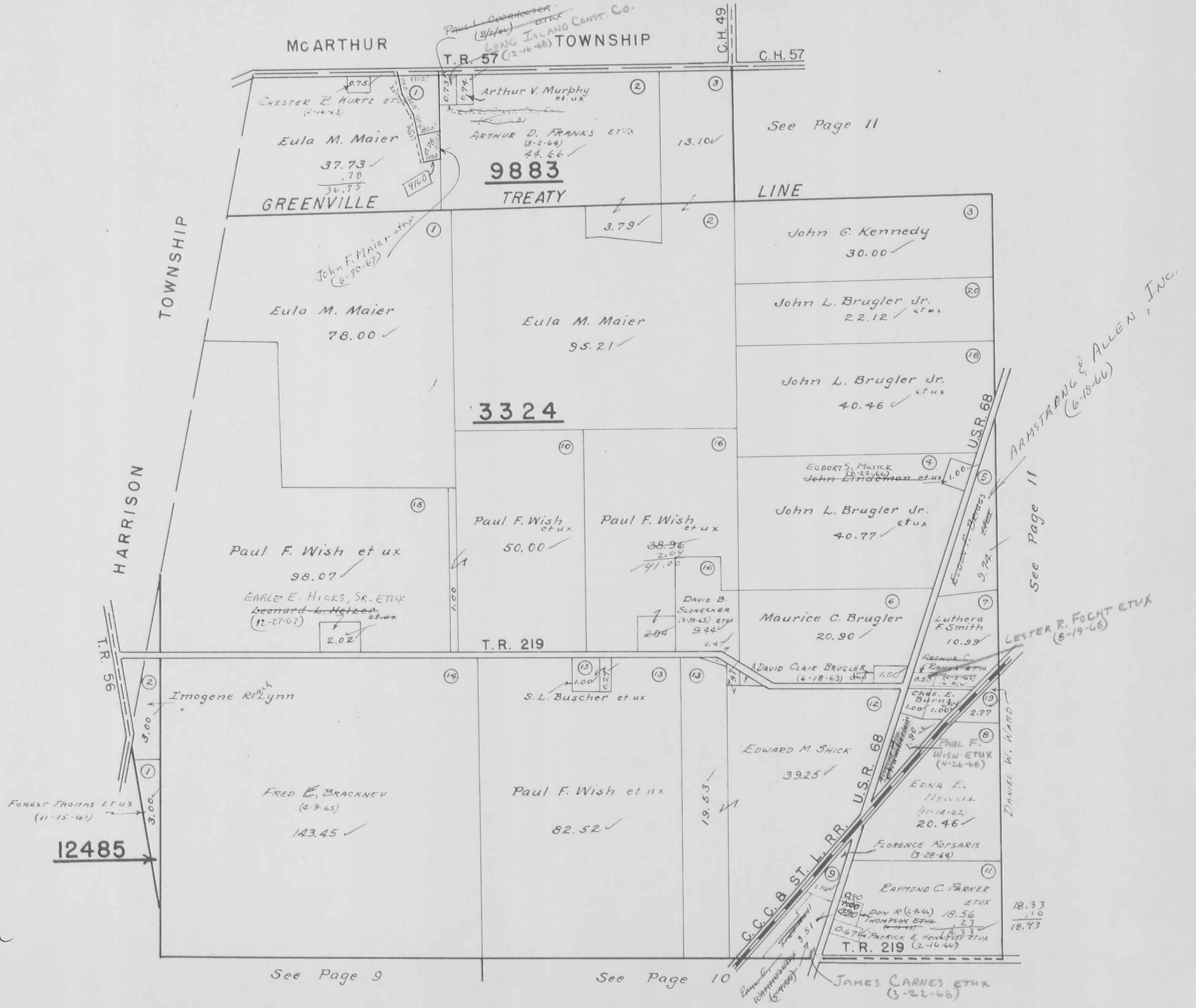
Ronald H. Heath et ux  
 (6-3-66)

37.681  
 11.50  
 26.181

VIRGINIA MILITARY SURVEYS

3324  
9883  
12485

SCALE 10 CHAINS = 1 INCH



See Page 9

See Page 10

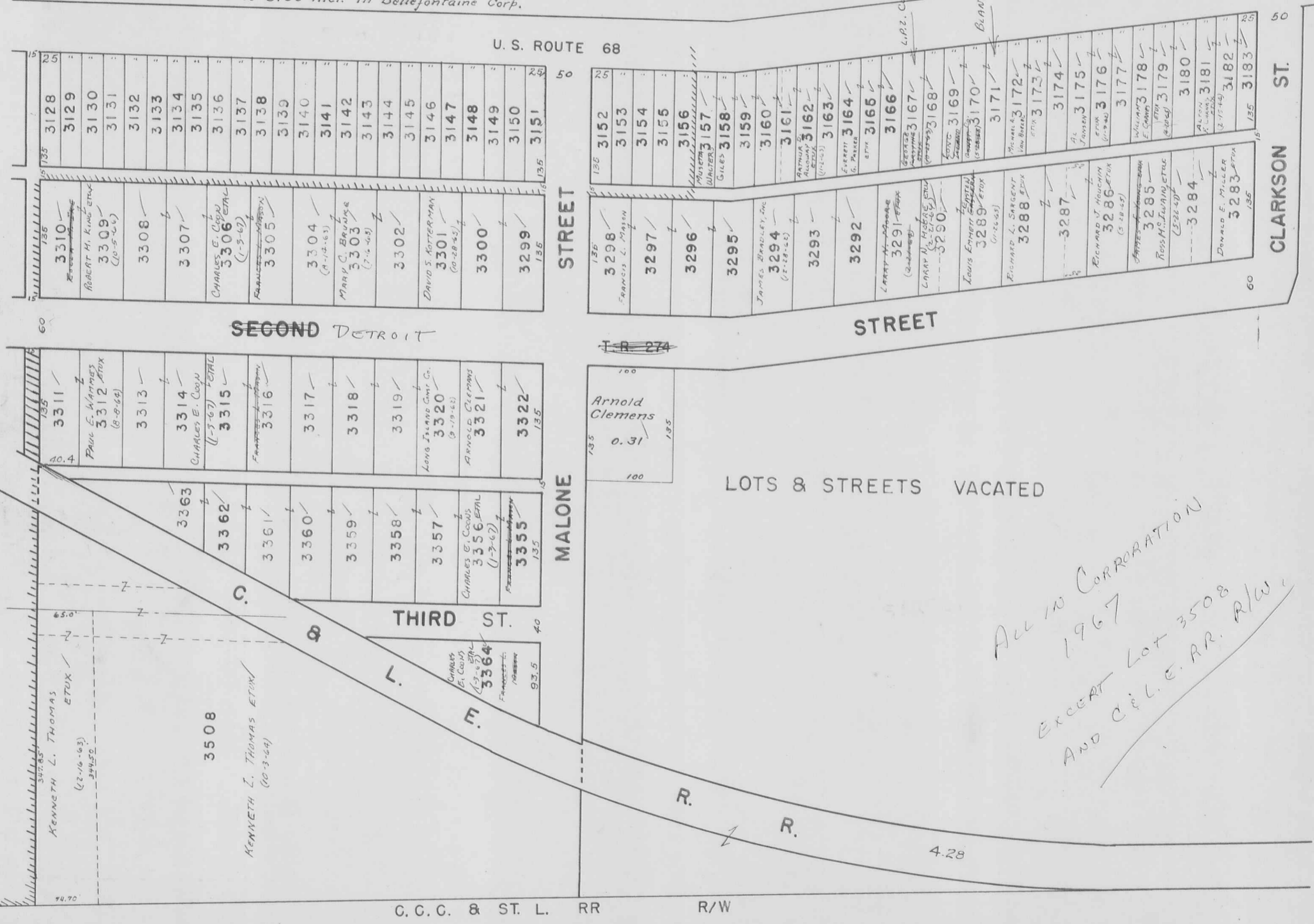
Oct. 19, 1960  
H.E.D.

LAKE TOWNSHIP — SECTION 33 TOWN 4 RANGE 14 PAGE 13  
 CLARK'S PARK ADDITION N-PART

SCALE 100 FEET TO THE INCH

Note:  
 Lots 3128 To 3156 incl. in Bellefontaine Corp.

L.P.R. CLARK'S COY. INC.  
 (4-11-67)  
 BLANCHE E. STIEG  
 (6-7-66)



3310	3128
ROBERT M. KING ETUX (10-5-64)	3129
3309	3130
3308	3131
3307	3132
CHARLES E. COON ETUX (1-3-67)	3133
3306	3134
3305	3135
3304	3136
MARY C. BRUNKE (7-4-65)	3137
3303	3138
3302	3139
3301	3140
3300	3141
3299	3142
	3143
	3144
	3145
	3146
	3147
	3148
	3149
	3150
	3151

3311	3317
PAUL E. WANNIES ETUX (8-8-64)	3318
3314	3319
CHARLES E. COON (1-3-67) ETUX	3320
3315	3321
3316	3322
3363	
3362	
3361	
3360	
3359	
3358	
3357	
CHARLES E. COON ETUX (1-3-67)	
3356	
3355	

3298	3152
FRANCIS L. MASON	3153
3297	3154
3296	3155
3295	3156
3294	3157
JAMES BRADLEY, INC. (12-28-63)	3158
3293	3159
3292	3160
LARRY A. MOORE (3-21-67)	3161
LARRY N. HOBBS ETUX (2-21-65)	3162
3290	3163
LOUIS EMERY ETUX (1-20-65)	3164
3289	3165
3288	3166
RICHARD L. SARGENT ETUX	3167
3287	3168
RICHARD J. HOUGHIN ETUX (3-28-65)	3169
3286	3170
3285	3171
ROSS H. LIVING ETUX (5-22-67)	3172
3284	3173
3283	3174
3282	3175
3281	3176
3280	3177
3279	3178
3278	3179
3277	3180
3276	3181
3275	3182
3274	3183

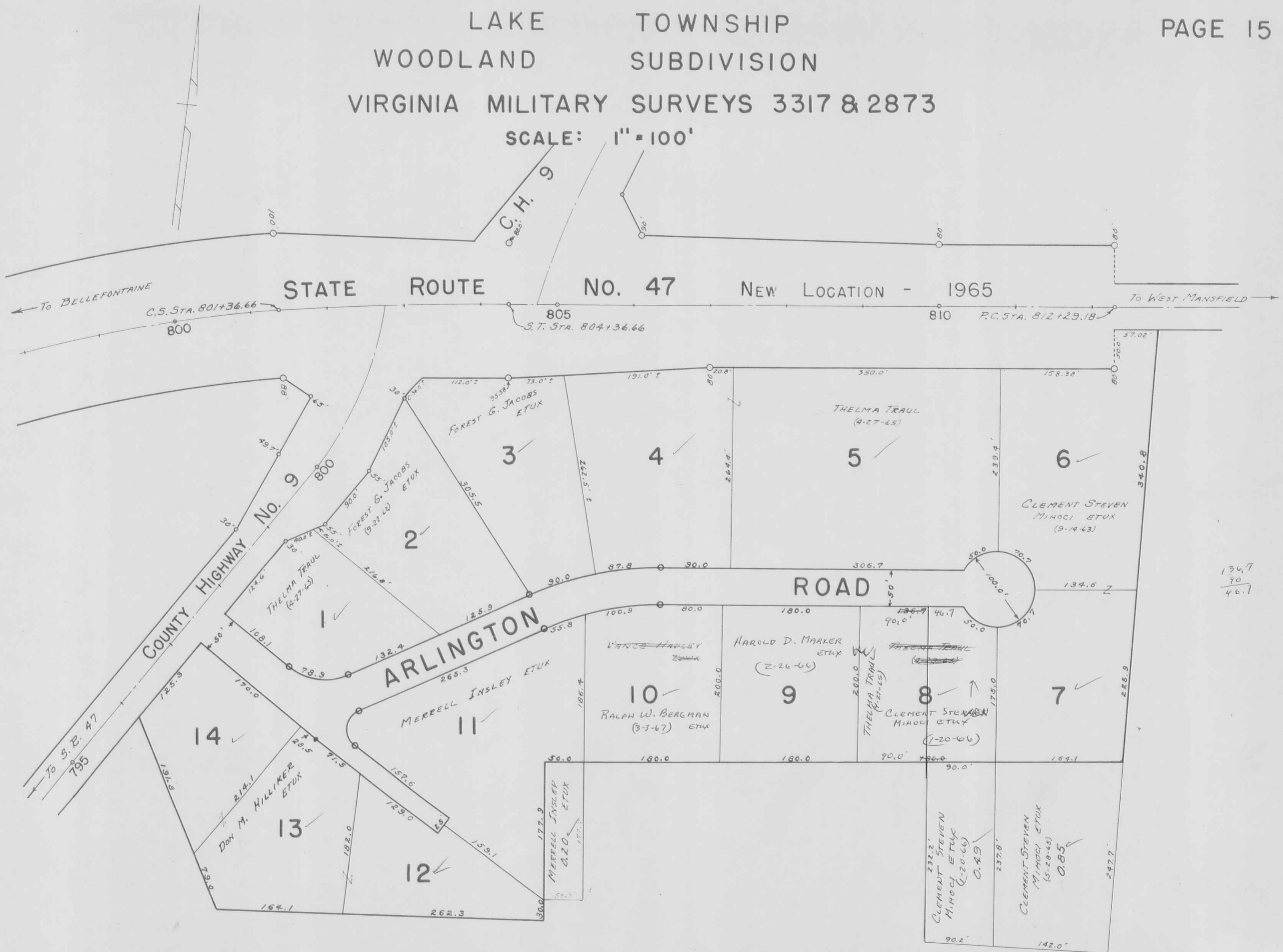
ALL IN CORPORATION  
 1967  
 EXCEPT LOT 3508  
 AND C.C.C. & R.R. A/W





LAKE TOWNSHIP  
WOODLAND SUBDIVISION  
VIRGINIA MILITARY SURVEYS 3317 & 2873

SCALE: 1" = 100'



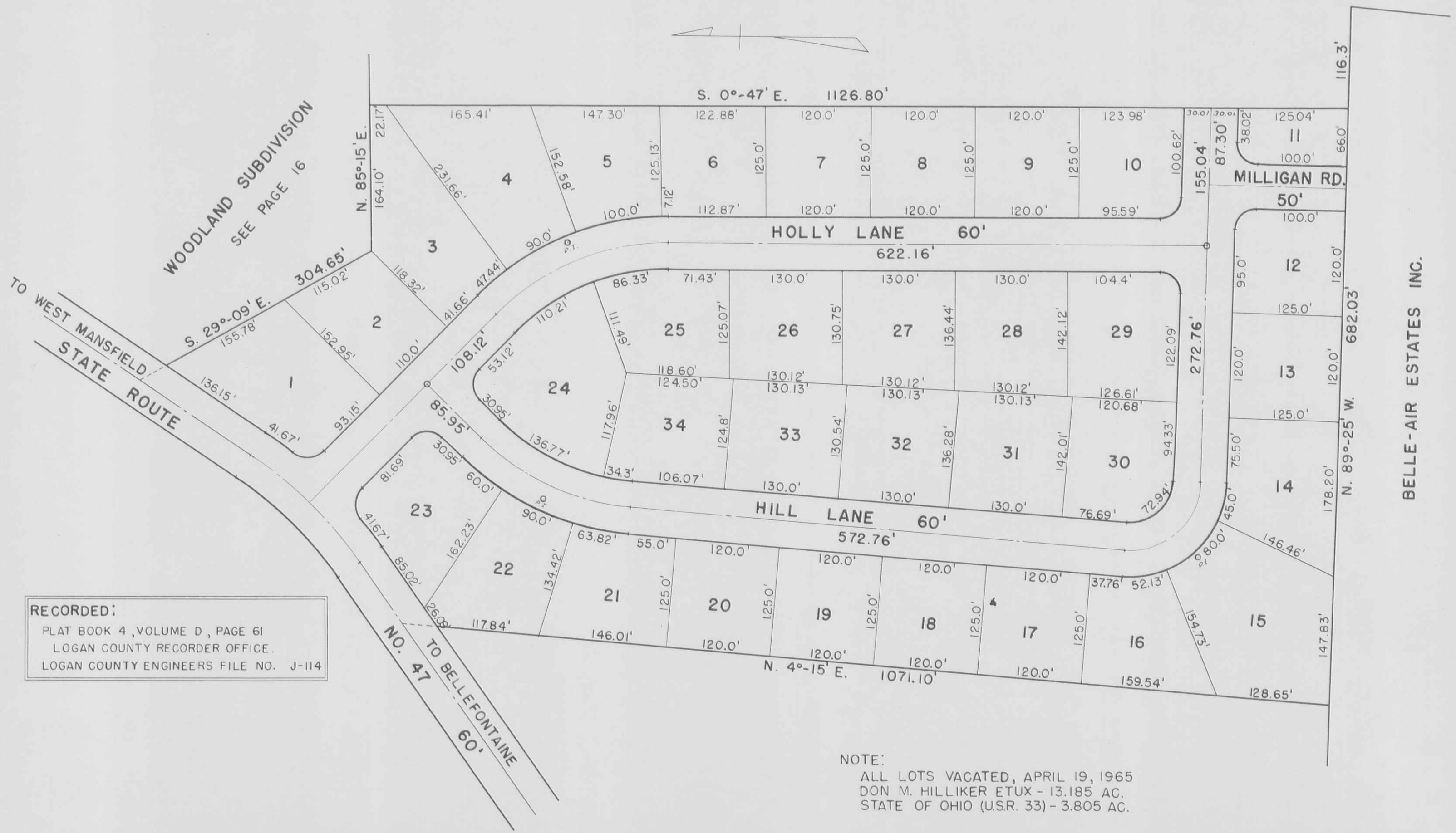
136.7  
90  
46.1



LAKE TOWNSHIP  
HOLLY HILL SUBDIVISION

V.M.S. 2873

SCALE: 1"=100'



WOODLAND SUBDIVISION  
SEE PAGE 16

TO WEST MANSFIELD  
STATE ROUTE

BELLE-AIR ESTATES INC.

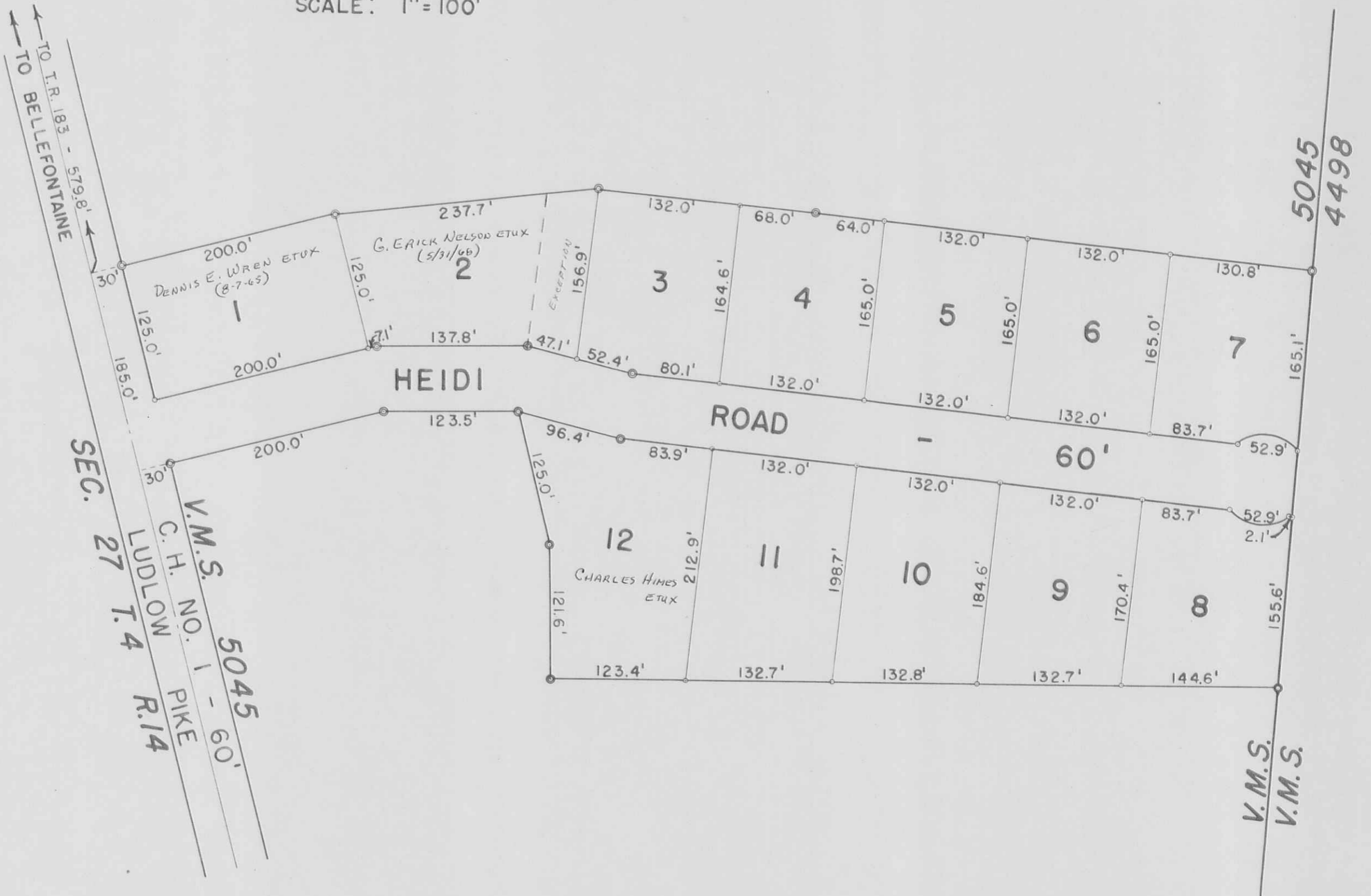
RECORDED:  
 PLAT BOOK 4, VOLUME D, PAGE 61  
 LOGAN COUNTY RECORDER OFFICE.  
 LOGAN COUNTY ENGINEERS FILE NO. J-114

NOTE:  
 ALL LOTS VACATED, APRIL 19, 1965  
 DON M. HILLIKER ETUX - 13.185 AC.  
 STATE OF OHIO (U.S.R. 33) - 3.805 AC.

LAKE TOWNSHIP  
HEIDI ROAD ALLOTMENT

V.M.S. 5045

SCALE: 1" = 100'



SEC. 27 T. 4 R. 14  
LUDLOW PIKE  
V.M.S. NO. 1 - 60'  
V.M.S. 5045

V.M.S.  
V.M.S.

LOT	NAME	DATE
1	DENNIS E. WREN ETUX	8-7-65
2	G. ERICK NELSON ETUX (EXCEPT 47.1' OFF) HARABLE CONSTRUCTION - E.S. 100'	5/31/66
3	"	
4	"	
5	"	
6	"	
7	"	
8	"	
9	"	
10	"	
11	"	
12	CHARLES HIMES ETUX	

DRAWN BY DANIEL E. GILBERT.  
APRIL 30, 1965

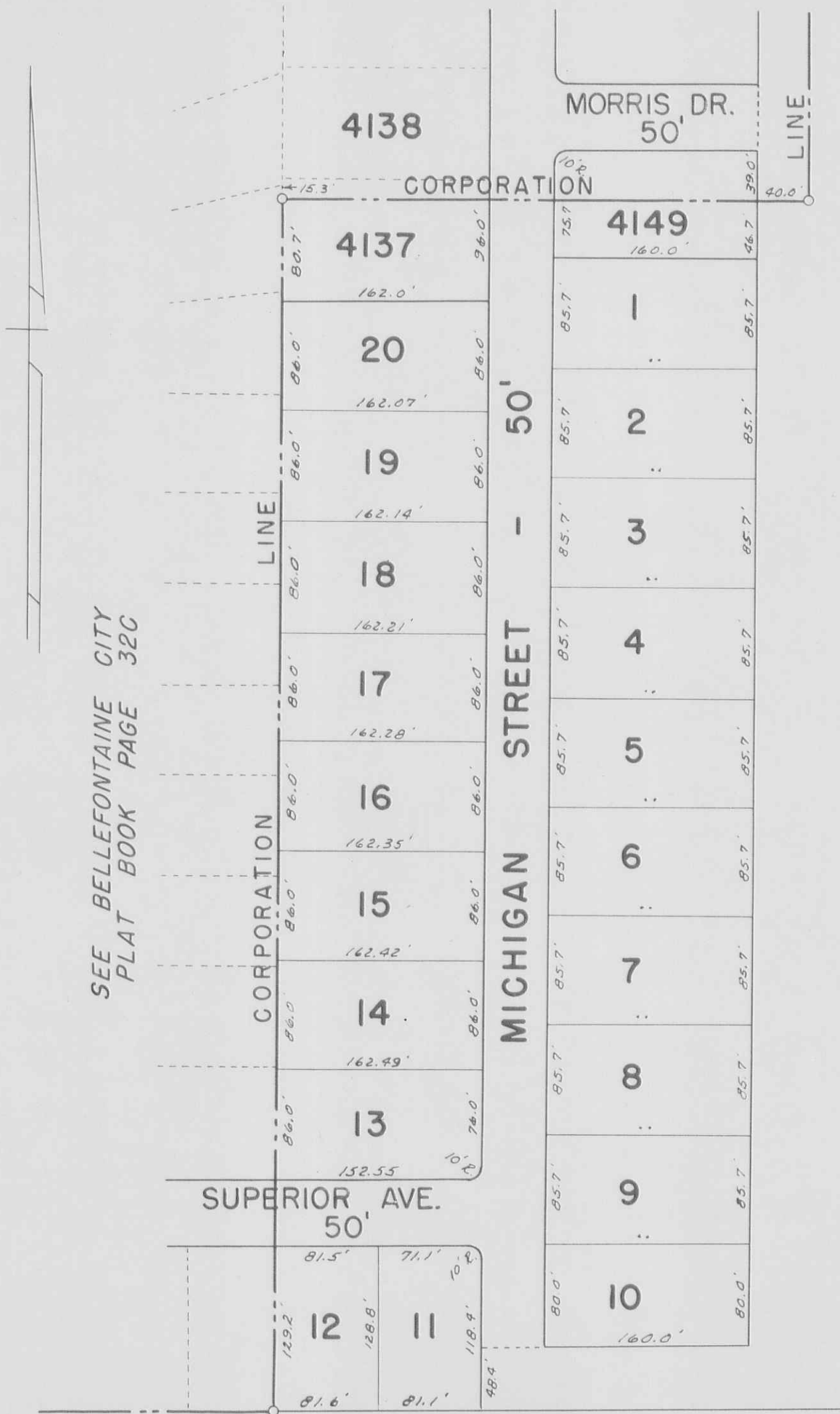
ALLOTMENT  
... - 8.31 AC.  
BOOK 4 VOL. D PAGE 114.  
J-176, APRIL 1965.

LAKE HEIGHTS ALLOTMENT NO. 3

SEC. 27, T-4, R-14

SCALE: 1" = 100'

SEE BELLEFONTAINE CITY  
PLAT BOOK PAGE 32D



SEE LAKE TOWNSHIP PAGE 1

LOT	NAME	DATE
1	LONG IS. CONST. CO	
2	"	
3	"	
4	"	
5	"	
6	"	
7	DONALD E. KNEFF ETUX	3-29-68
8	Vinton L. Detrick ETUX	8-24-67
9	RUSSELL E. GROSS ETUX	4-23-68
10	"	
11	"	
12	JAMES R. FRANTZ ETUX	1-2-65
13	CHARLES P. RICE ETUX	8-28-65
14	EVERETT W. ALEXANDER ETUX	2-21-67
15	DAVID M. DICKERHAM LONG IS. CONST. CO.	7-7-67
16	RUSSELL E. ROWY ETUX	1-16-68
17	DAVID L. McCREIGHT ETUX	9-12-67
18	JACK M. HADLEY ETUX	8-25-66
19	CARL A. MUMFORD ETUX	7-7-66
20	ROBERT E. HAWLEY JR. ETUX	8-8-66

4137 Pt. LONG IS. CONST. CO. LEON EDWARD TAPP (12-4-66) ETUX  
4149 Pt. LONG IS. CONST. CO.

LAKE HEIGHTS ALLOTMENT NO. 3.  
LOTS 1 TO 20 INCL.  
RECORDERS PLAT BOOK 4, VOL. D, PAGE 109.  
ENGINEERS FILE A-125, JANUARY 25, 1966.