

**UNION**  
**TOWNSHIP**  
**1958**



INDEX

SECTION TOWN RANGE PAGE

1	3	14	8
2	3	14	4
7	3	14	8
8	3	14	4
13	3	14	7
14	3	14	3
19	3	14	6
20	3	14	2
25	3	14	5
26	3	14	1
4	4	13	20
5	4	13	16
6	4	13	12
10	4	13	20
11	4	13	16
12	4	13	12
16	4	13	19
17	4	13	15
18	4	13	11
22	4	13	18
23	4	13	14
24	4	13	10
28	4	13	17
29	4	13	13
30	4	13	9

BETWEEN THE MIAMI RIVERS SURVEY



# UNION TOWNSHIP

## INDEX MAP

SECTION - TOWN - RANGE

Scale: 40 Chains to the Inch

PAGE 0

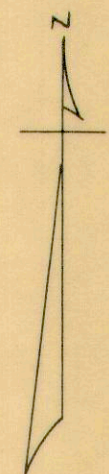
CORRECTED TO

~~January 1, 1964~~

*January 1, 1965*

*January 1, 1966*

		HARRISON TOWNSHIP						
TOWNSHIP		26-3-14 PAGE 1	20-3-14 PAGE 2	14-3-14 PAGE 3	8-3-14 PAGE 4	2-3-14 PAGE 4		TOWNSHIP
PLEASANT		25-3-14 PAGE 5	19-3-14 PAGE 6	13-3-14 PAGE 7	7-3-14 PAGE 8	1-3-14 PAGE 8		TOWNSHIP
TOWNSHIP		30-4-13 PAGE 9	24-4-13 PAGE 10	18-4-13 PAGE 11	12-4-13 PAGE 12	6-4-13 PAGE 12		
MIAMI		29-4-13 PAGE 13	23-4-13 PAGE 14	17-4-13 PAGE 15	11-4-13 PAGE 16	5-4-13 PAGE 16		LIBERTY
		28-4-13 PAGE 17	22-4-13 PAGE 18	16-4-13 PAGE 19	10-4-13 PAGE 20	4-4-13 PAGE 20		



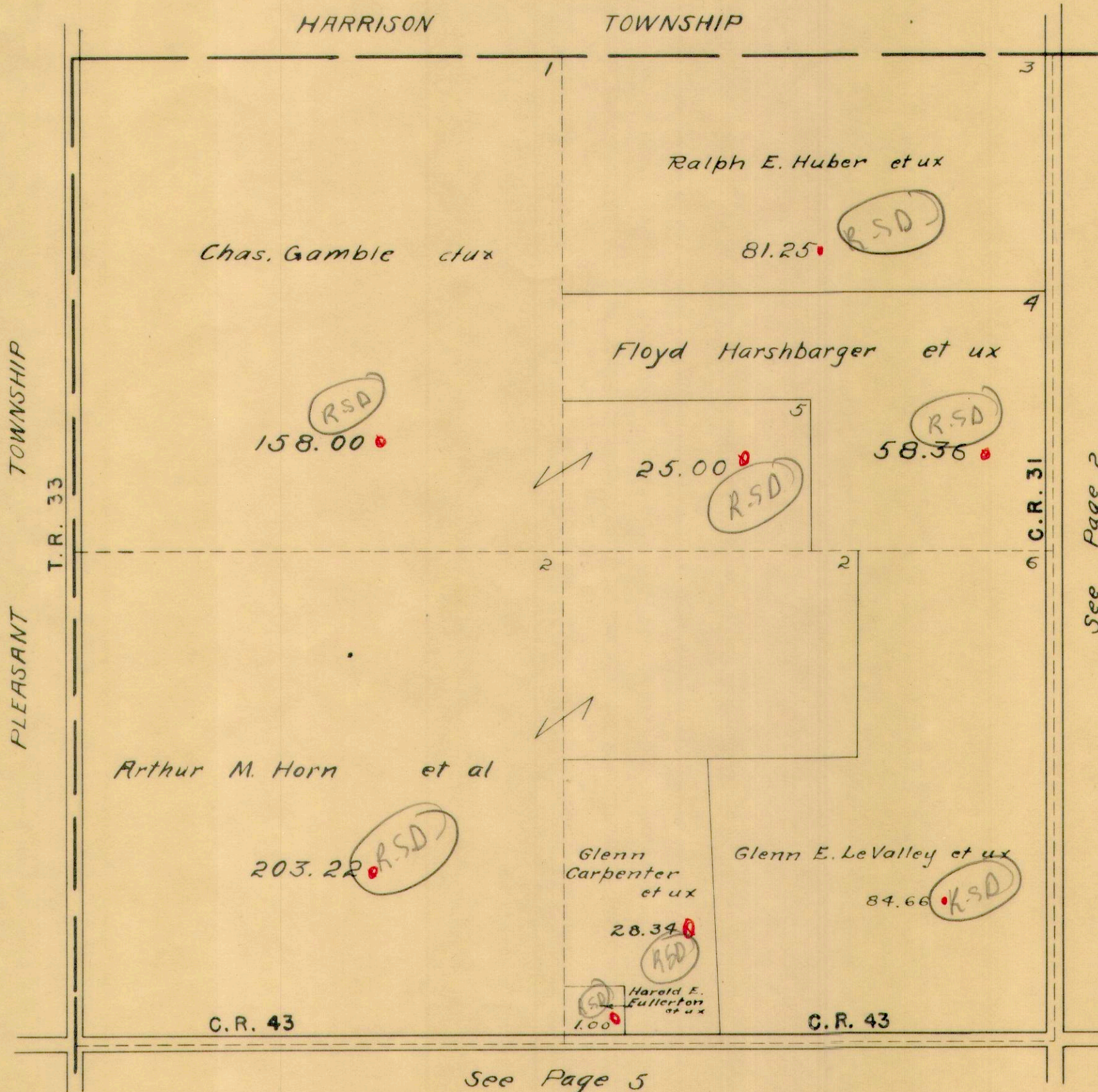
CHAMPAIGN

COUNTY



UNION TOWNSHIP  
SECTION 26 TOWN 3 RANGE 14

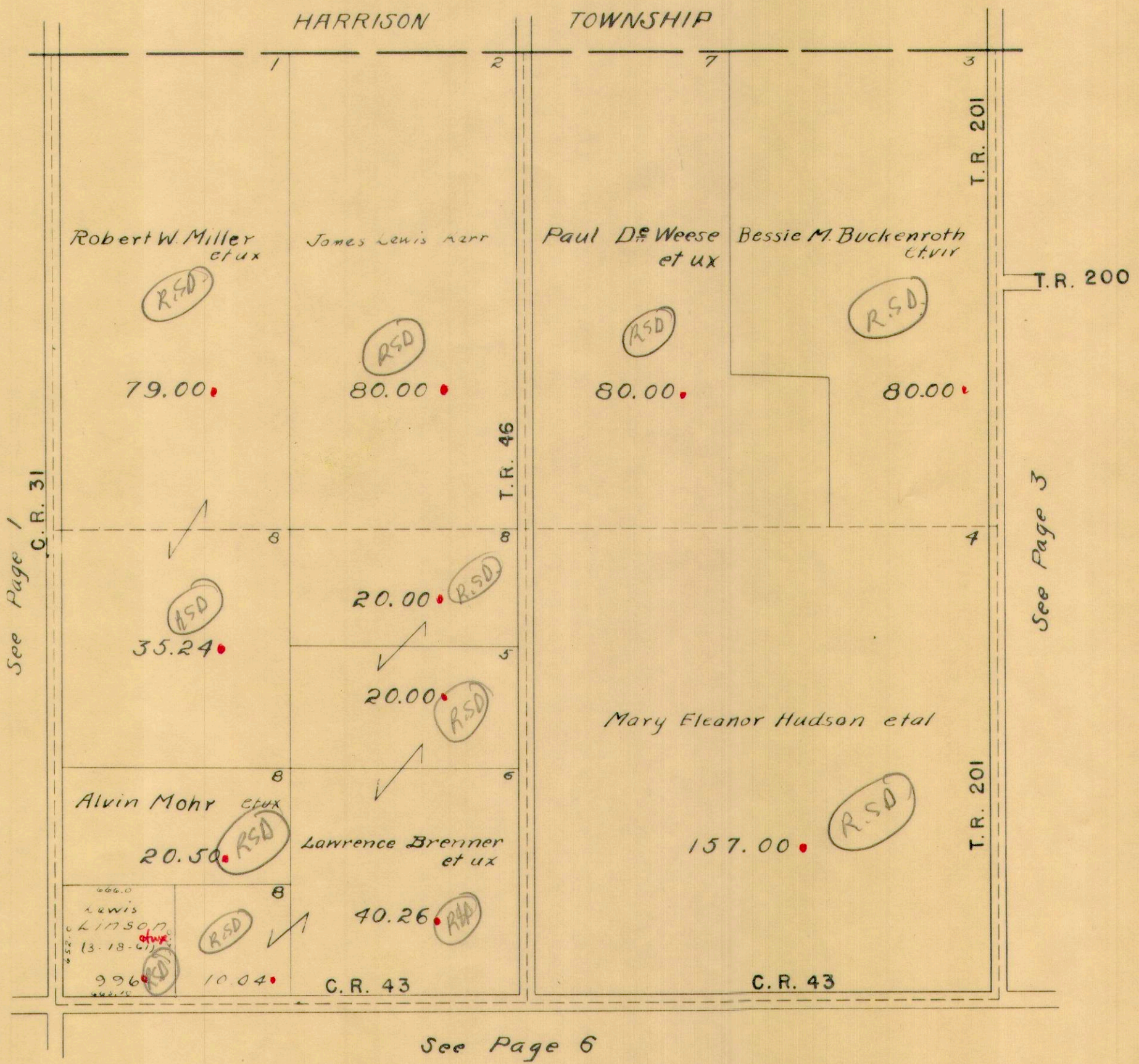
SCALE 10 CHAINS TO THE INCH





UNION TOWNSHIP  
SECTION 20 TOWN 3 RANGE 14

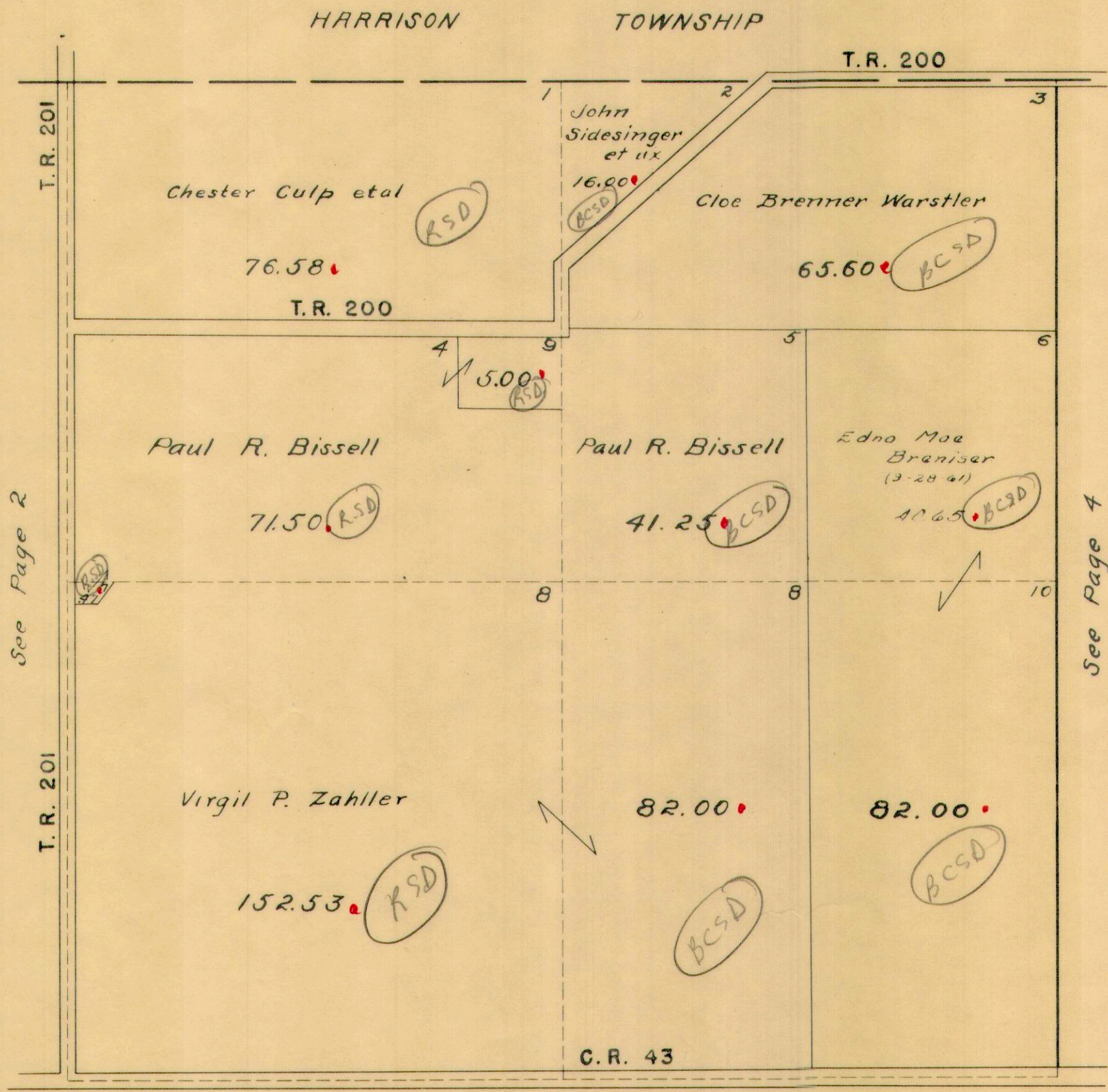
SCALE 10 CHAINS TO THE INCH





UNION TOWNSHIP  
SECTION 14 TOWN 3 RANGE 14

SCALE 10 CHAINS TO THE INCH



See Page 2

See Page 4

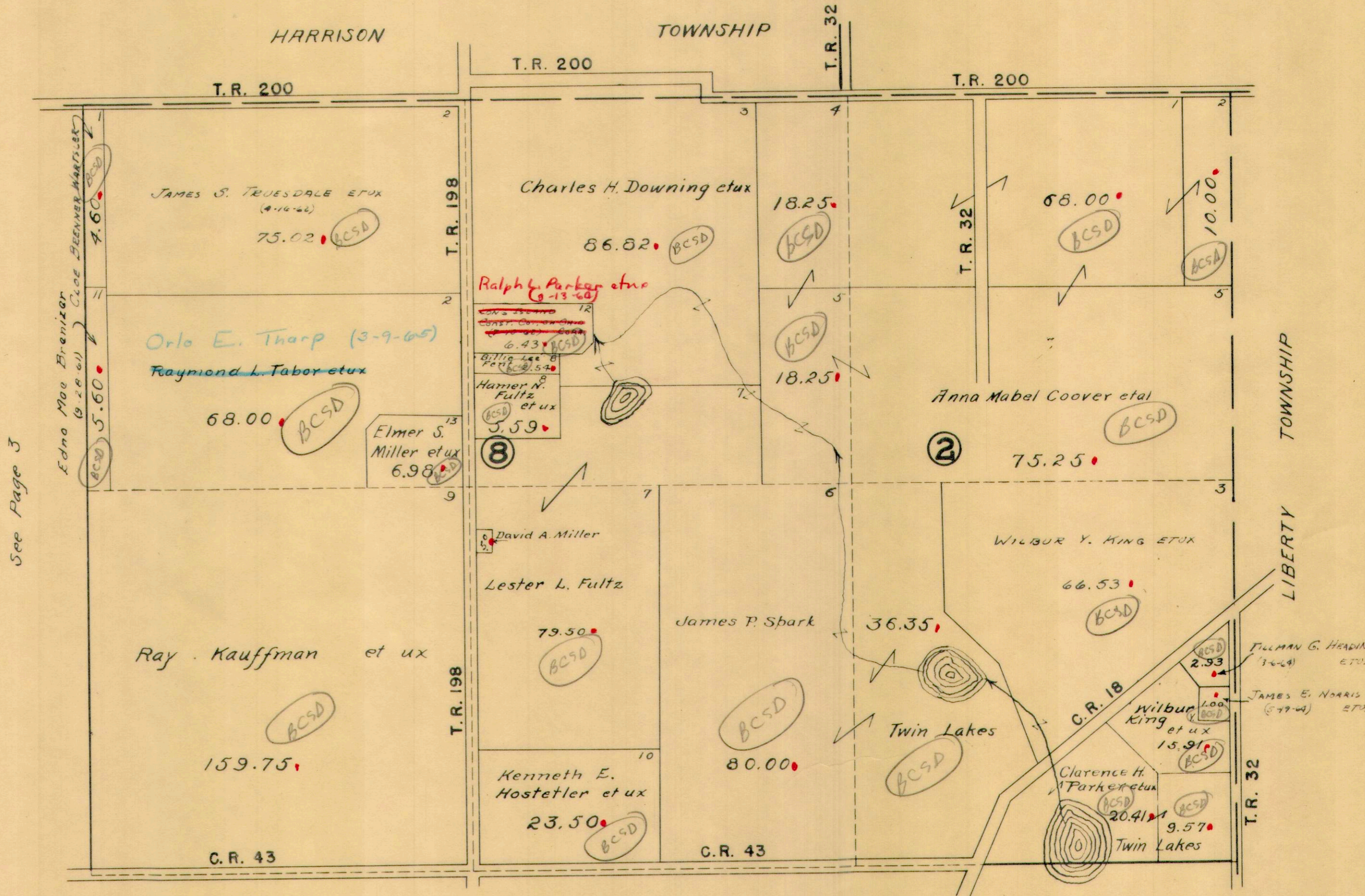
See Page 7



SECTION 8 TOWN 3 RANGE 14

SECTION 2 TOWN 3 RANGE 14

SCALE 10 CHAINS TO THE INCH



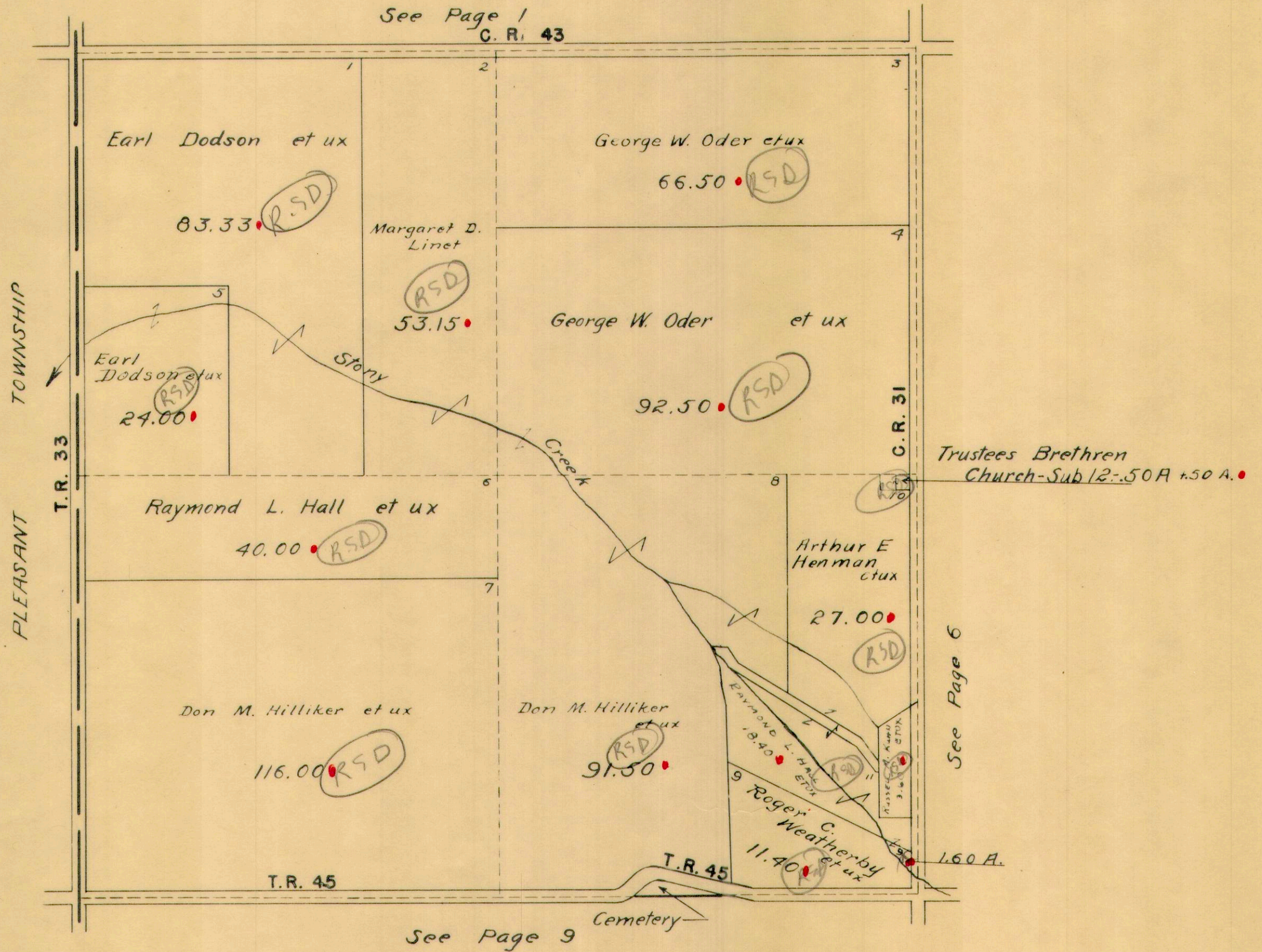
See Page 3

See Page 8



UNION TOWNSHIP  
SECTION 25 TOWN 3 RANGE 14

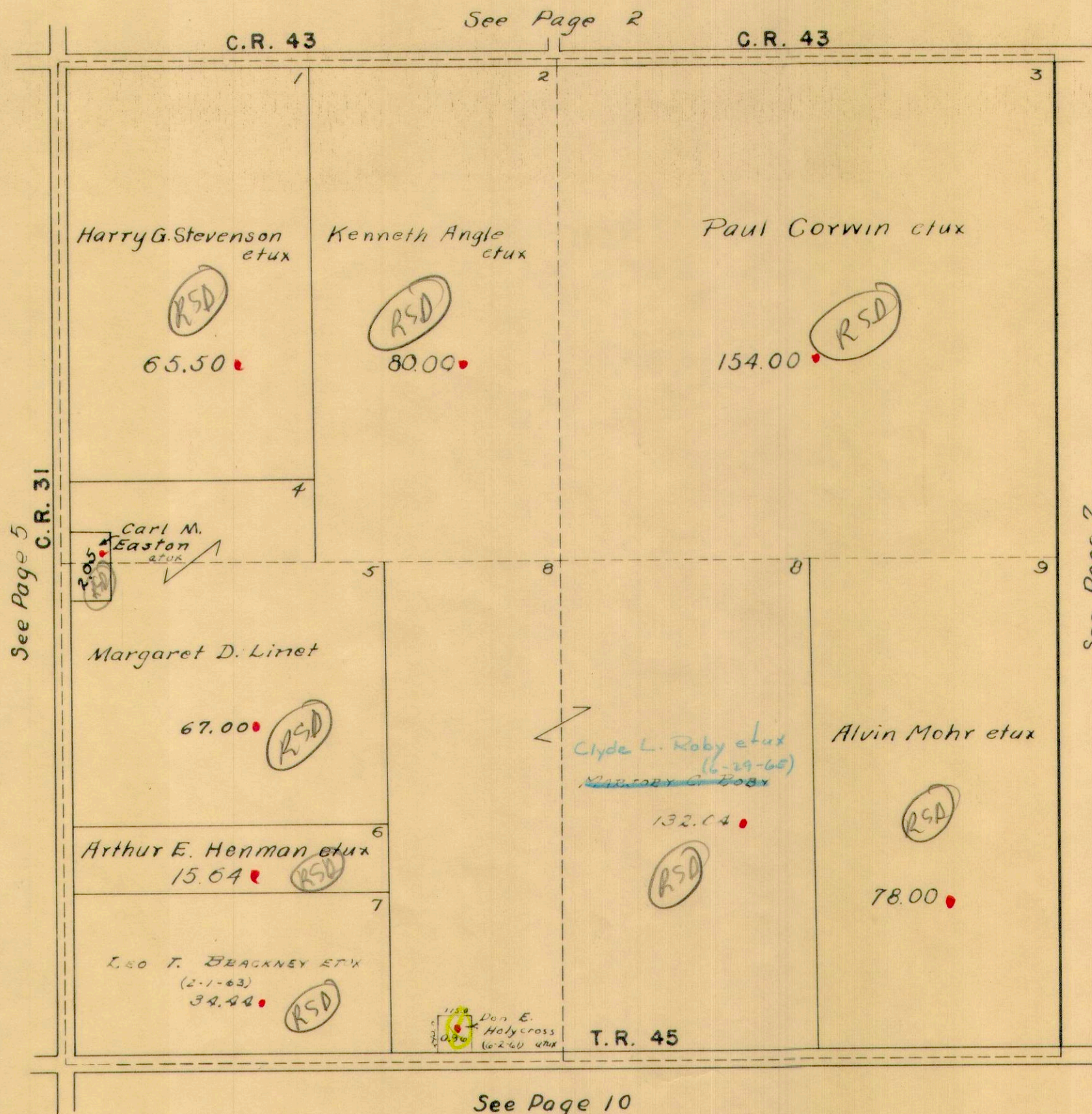
SCALE 10 CHAINS TO THE INCH





SECTION 19 TOWN 3 RANGE 14

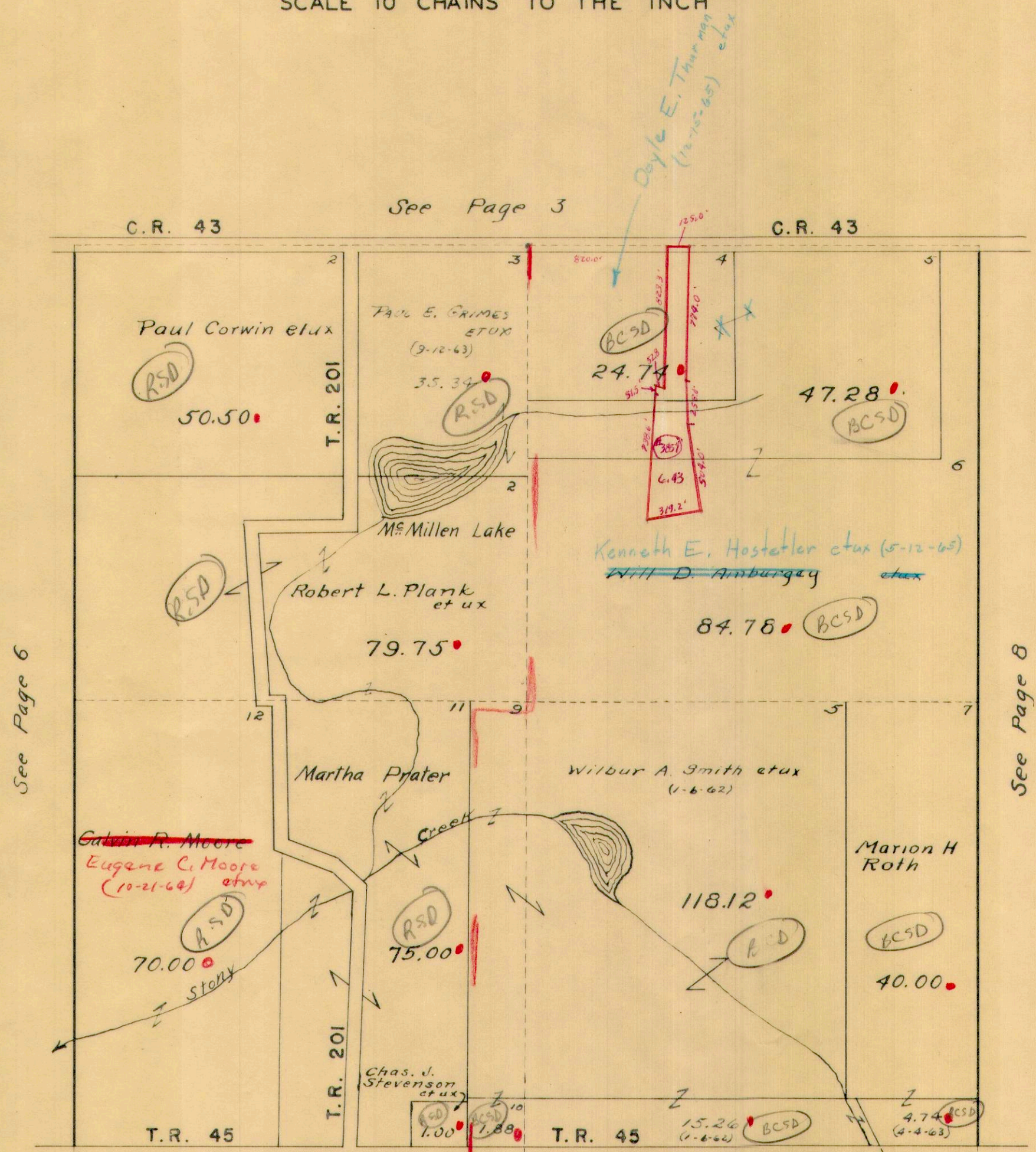
SCALE 10 CHAINS TO THE INCH





SECTION 13 TOWN 3 RANGE 14

SCALE 10 CHAINS TO THE INCH



See Page 6

See Page 8

See Page 11

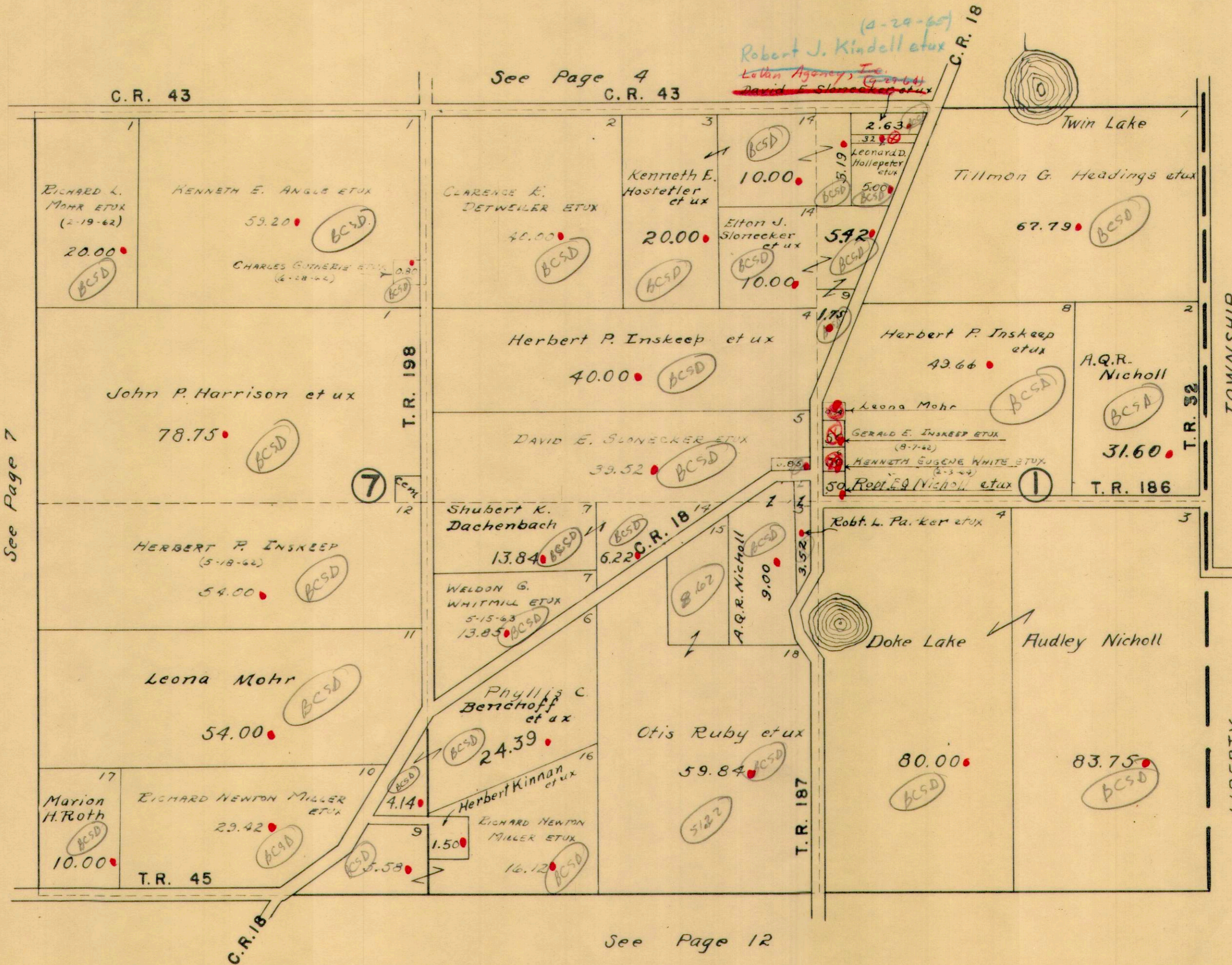
24.74  
6.43  
18.31



SECTION 7 TOWN 3 RANGE 14

SECTION 1 TOWN 3 RANGE 14

SCALE 10 CHAINS TO THE INCH



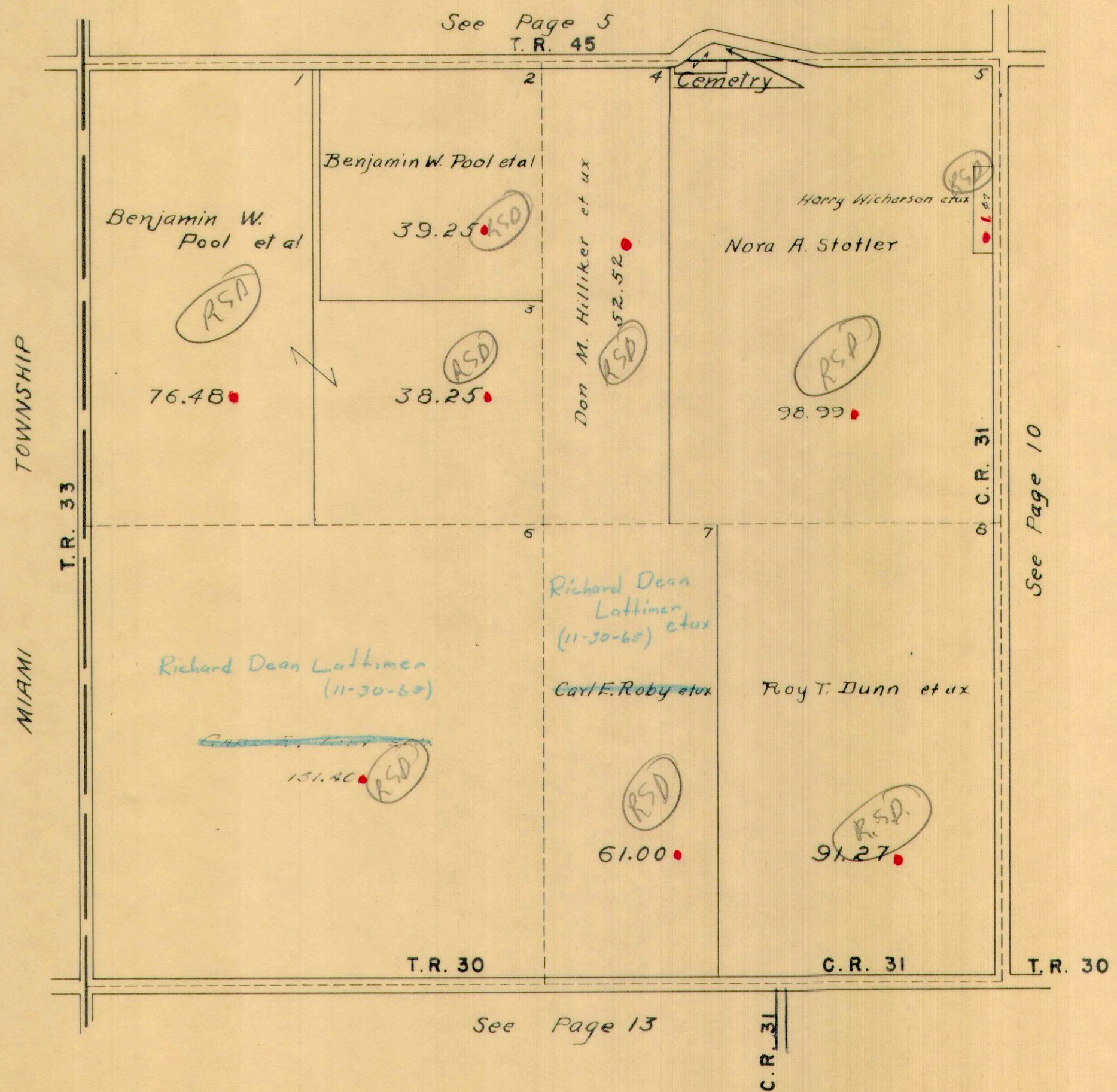
See Page 7

See Page 12



UNION TOWNSHIP  
SECTION 30 TOWN 4 RANGE 13

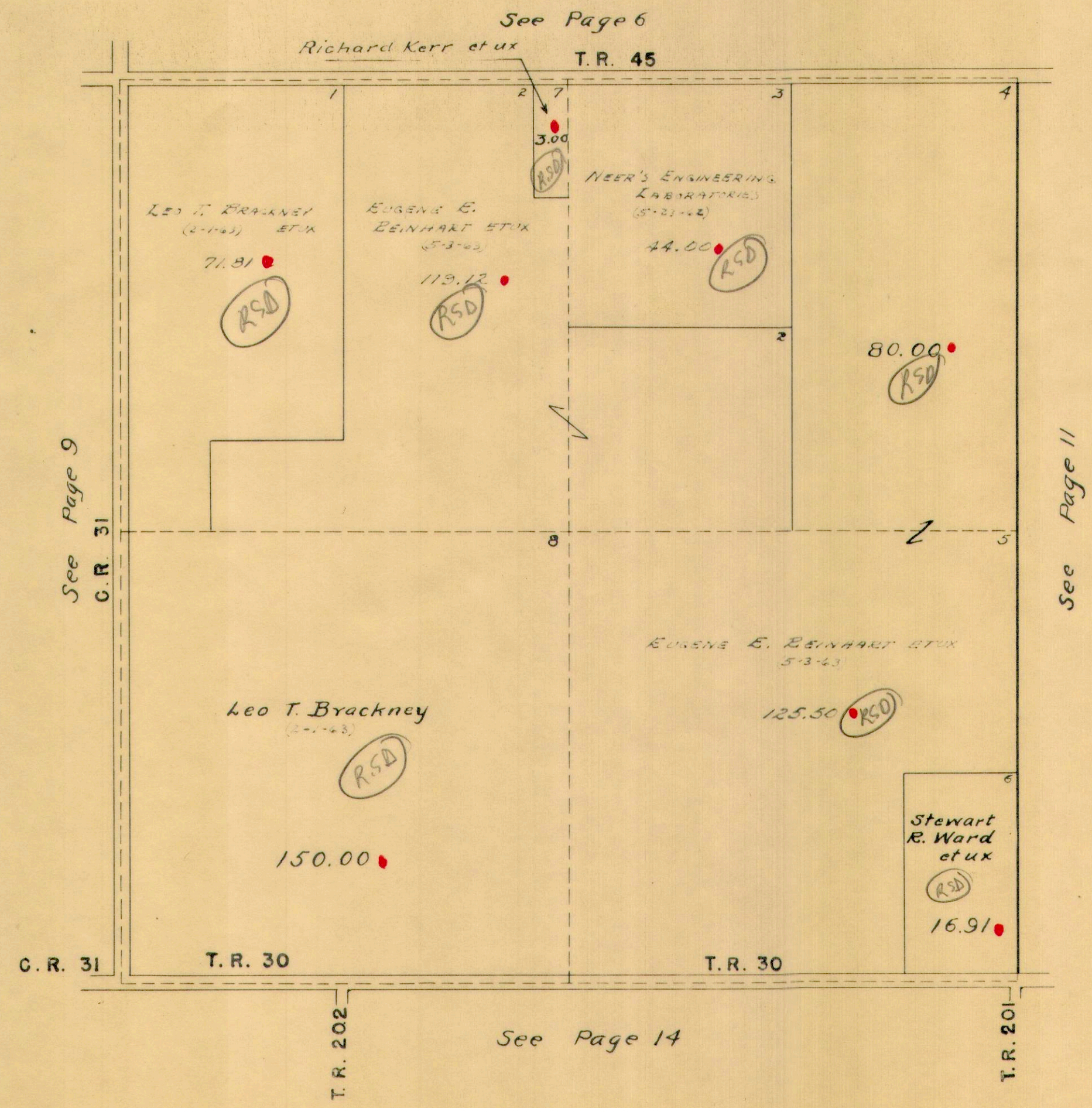
SCALE 10 CHAINS TO THE INCH





UNION TOWNSHIP  
SECTION 24 TOWN 4 RANGE 13

SCALE 10 CHAINS TO THE INCH

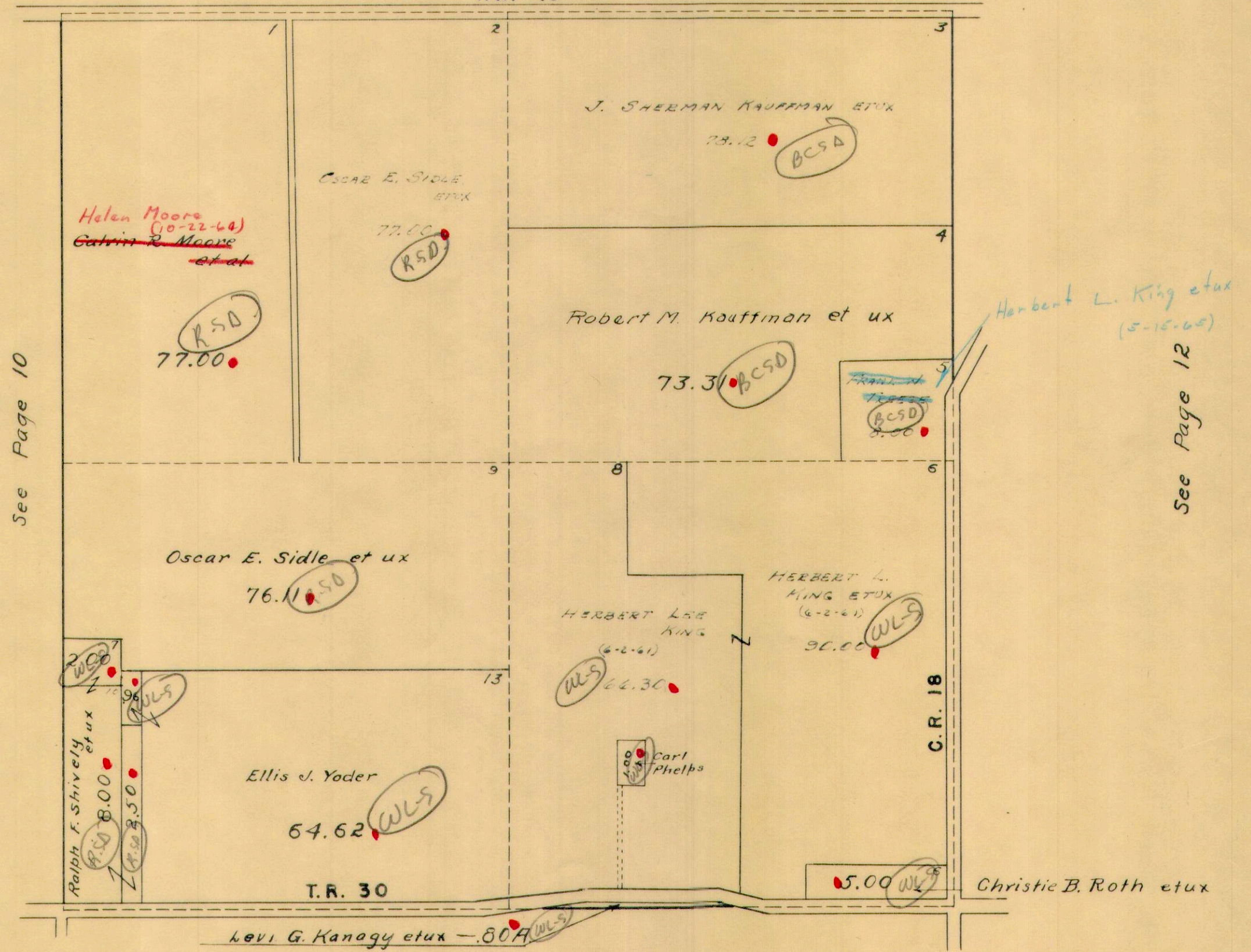




UNION TOWNSHIP  
SECTION 18 TOWN 4 RANGE 13

SCALE 10 CHAINS TO THE INCH

See Page 7  
T.R. 45



See Page 10

See Page 12

See Page 15

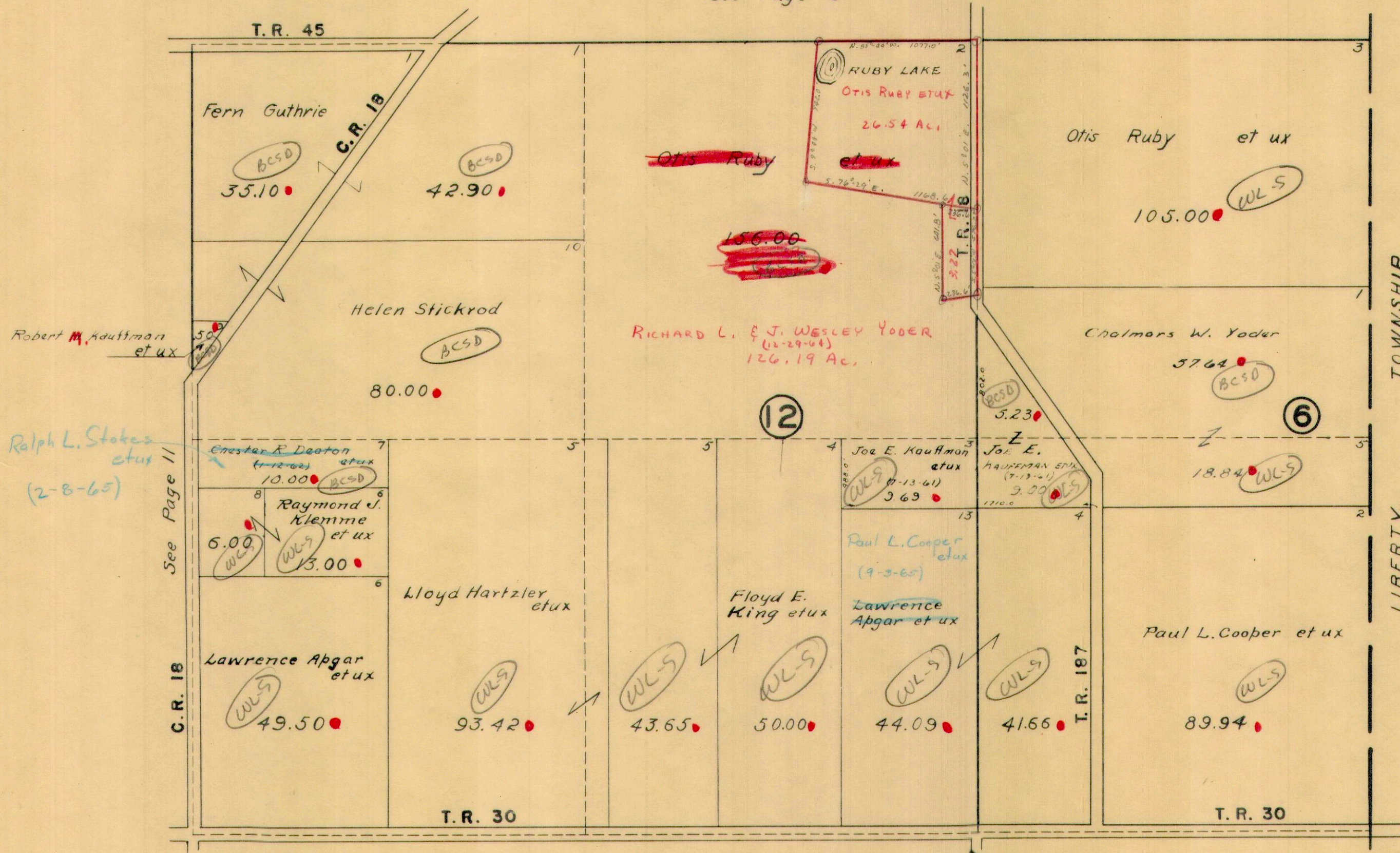


SECTION 12 TOWN 4 RANGE 13

SECTION 6 TOWN 4 RANGE 13

SCALE 10 CHAINS TO THE INCH

See Page 8

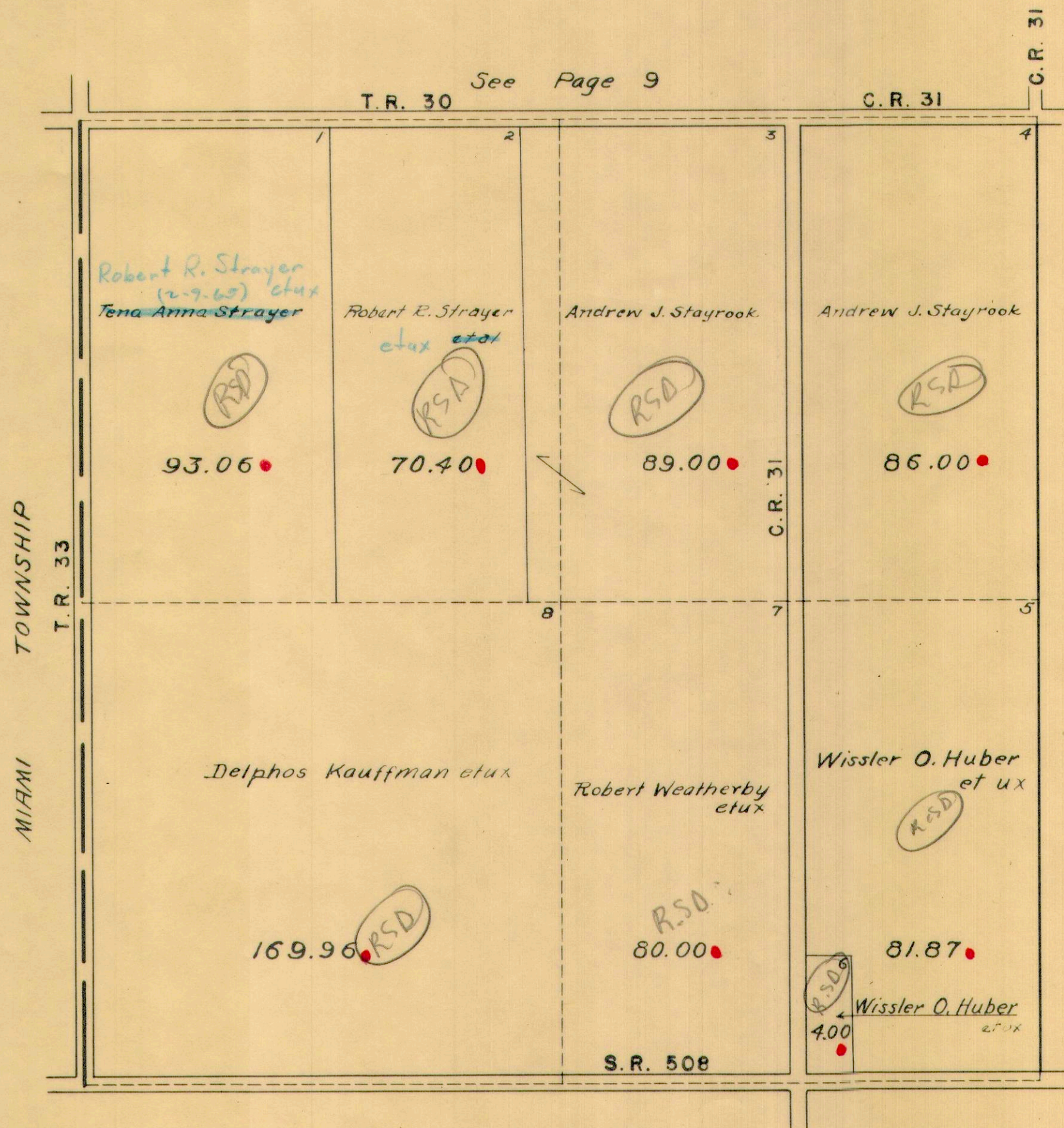


See Page 16



UNION TOWNSHIP  
SECTION 29 TOWN 4 RANGE 13

SCALE 10 CHAINS TO THE INCH

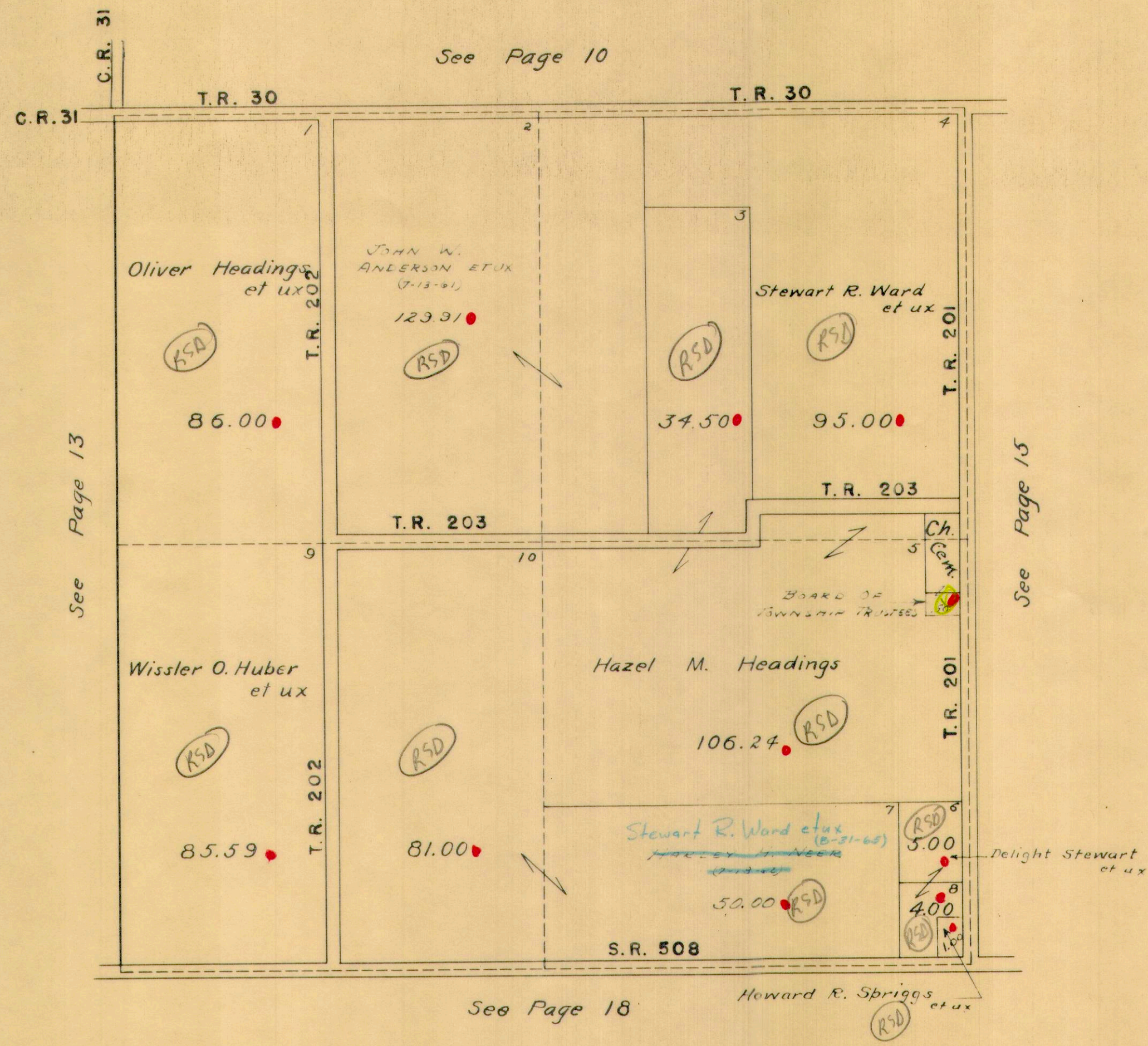


See Page 17



SECTION 23 TOWN 4 RANGE 13

SCALE 10 CHAINS TO THE INCH

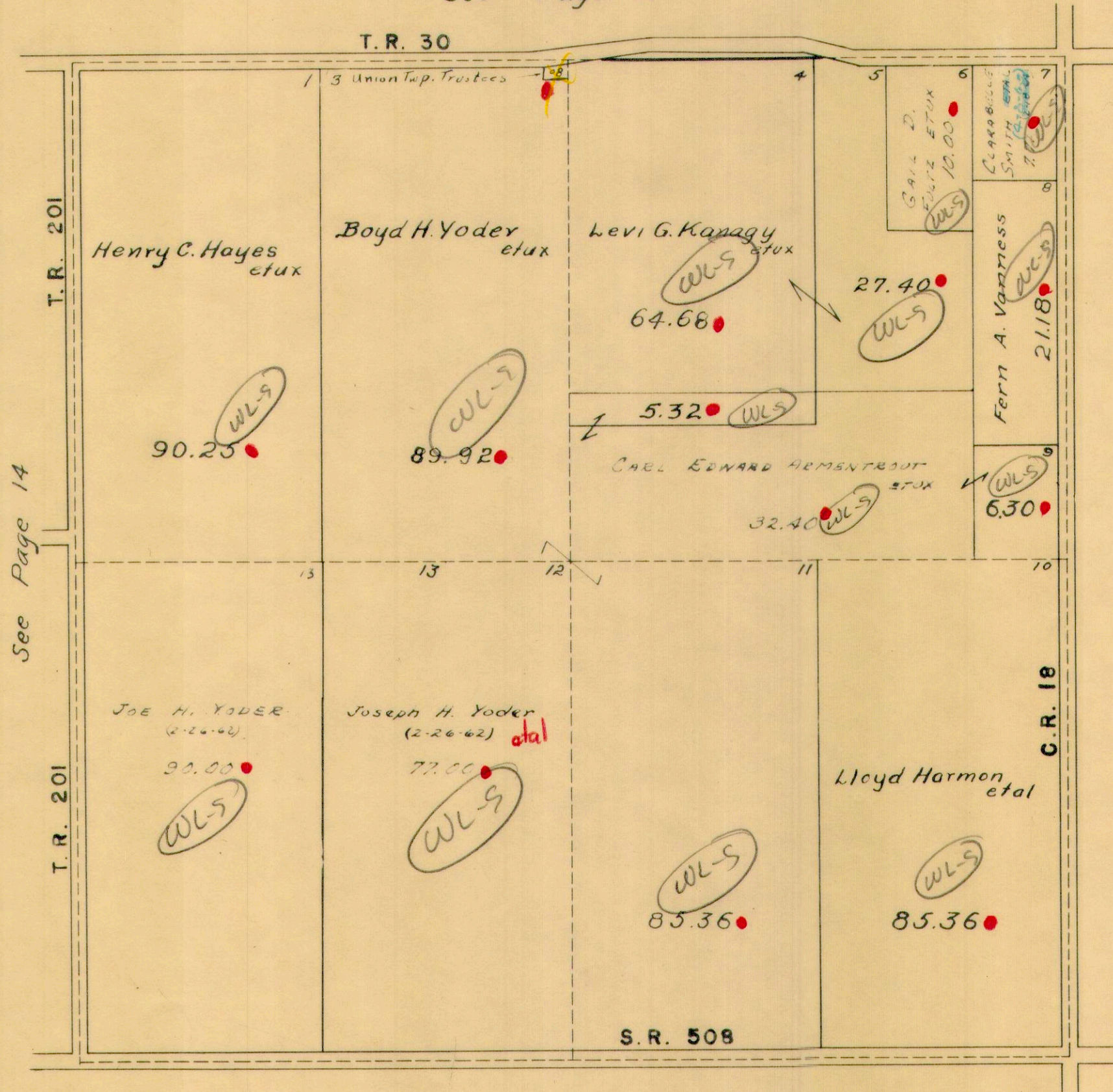




UNION TOWNSHIP  
SECTION 17 TOWN 4 RANGE 13

SCALE 10 CHAINS TO THE INCH

See Page 11



See Page 14

See Page 16

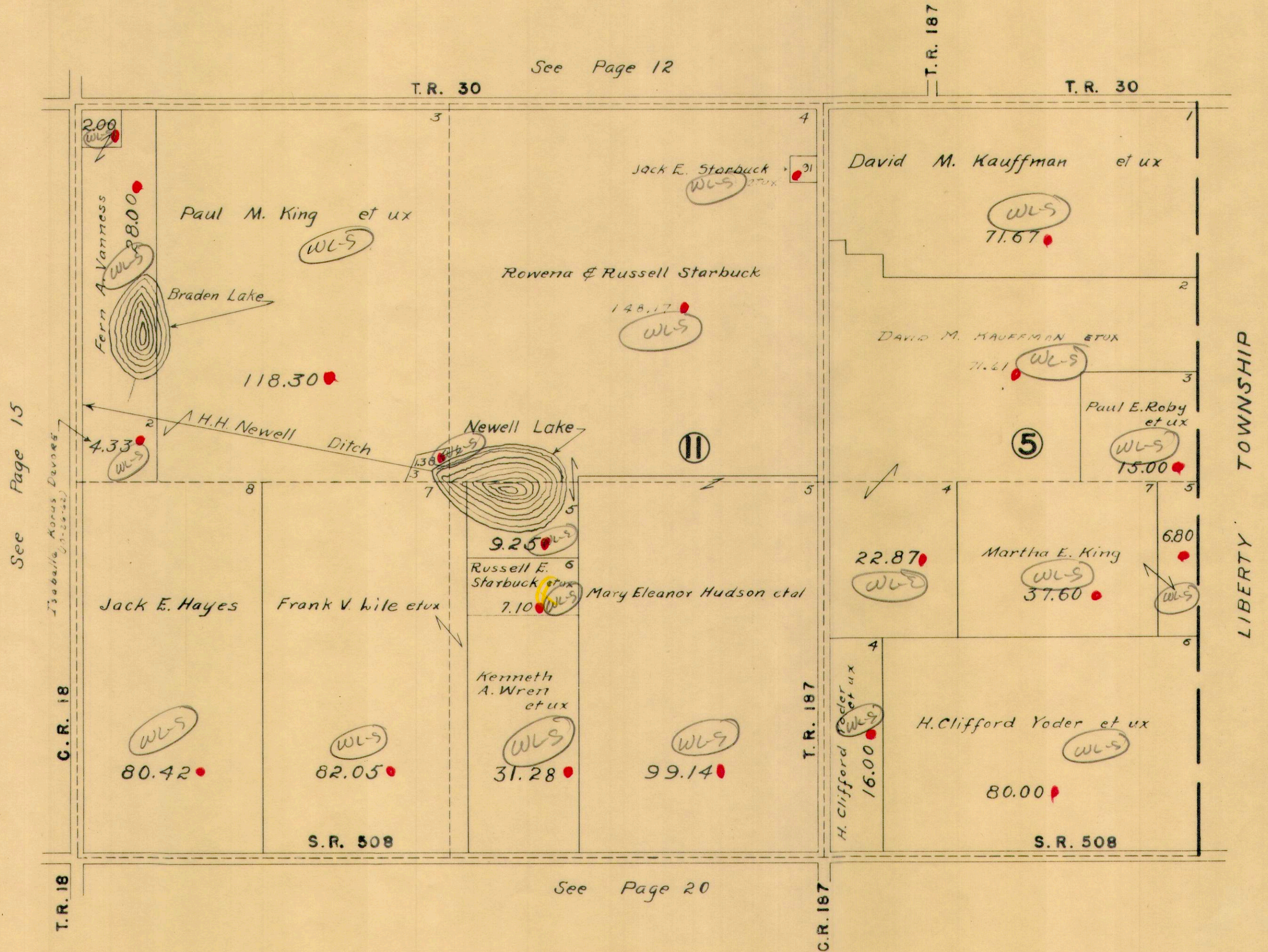
See Page 19



SECTION 11 TOWN 4 RANGE 13

SECTION 5 TOWN 4 RANGE 13

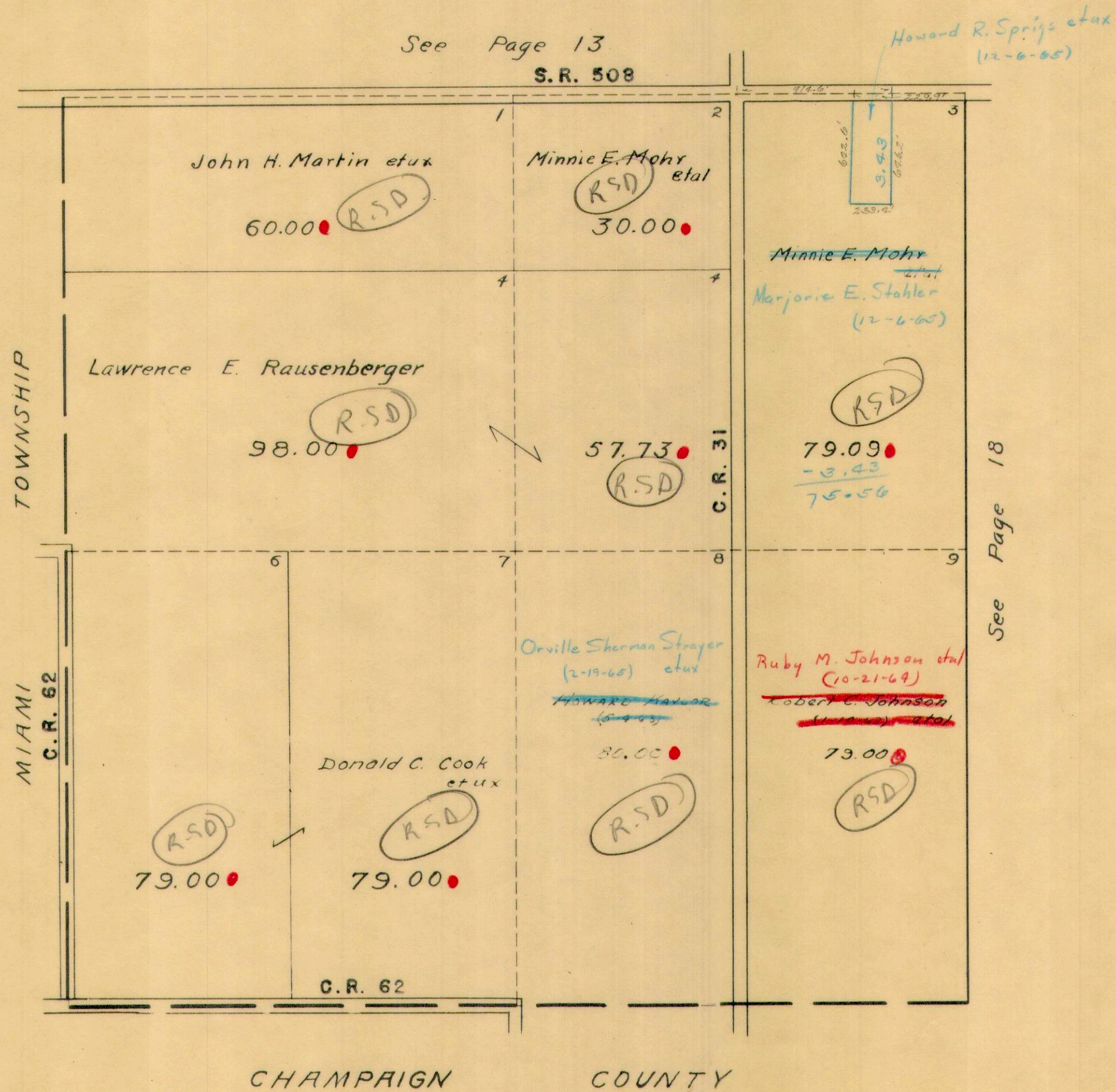
SCALE 10 CHAINS TO THE INCH





UNION TOWNSHIP  
SECTION 28 TOWN 4 RANGE 13

SCALE 10 CHAINS TO THE INCH



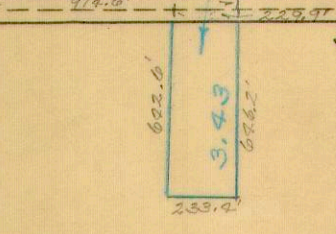
See Page 13

S.R. 508

Howard R. Spriggs et ux  
(12-6-65)

John H. Martin et ux  
60.00 ● RSD

Minnie E. Mohr et ux  
30.00 ● RSD



Minnie E. Mohr et ux  
Marjorie E. Stahlter  
(12-6-65)

Lawrence E. Rausenberger  
98.00 ● RSD

57.73 ● RSD

79.09 ●  
- 3.43  
75.56

TOWNSHIP

C.R. 31

See Page 18

MIAMI  
C.R. 62

79.00 ● RSD

Donald C. Cook et ux  
79.00 ● RSD

Orville Sherman Strayer  
(2-19-68) et ux  
~~Howard H. Hulse  
(5-4-65)~~

30.00 ● RSD

Ruby M. Johnson et ux  
(10-21-69)  
~~Robert C. Johnson  
(11-22-69) et ux~~

79.00 ● RSD

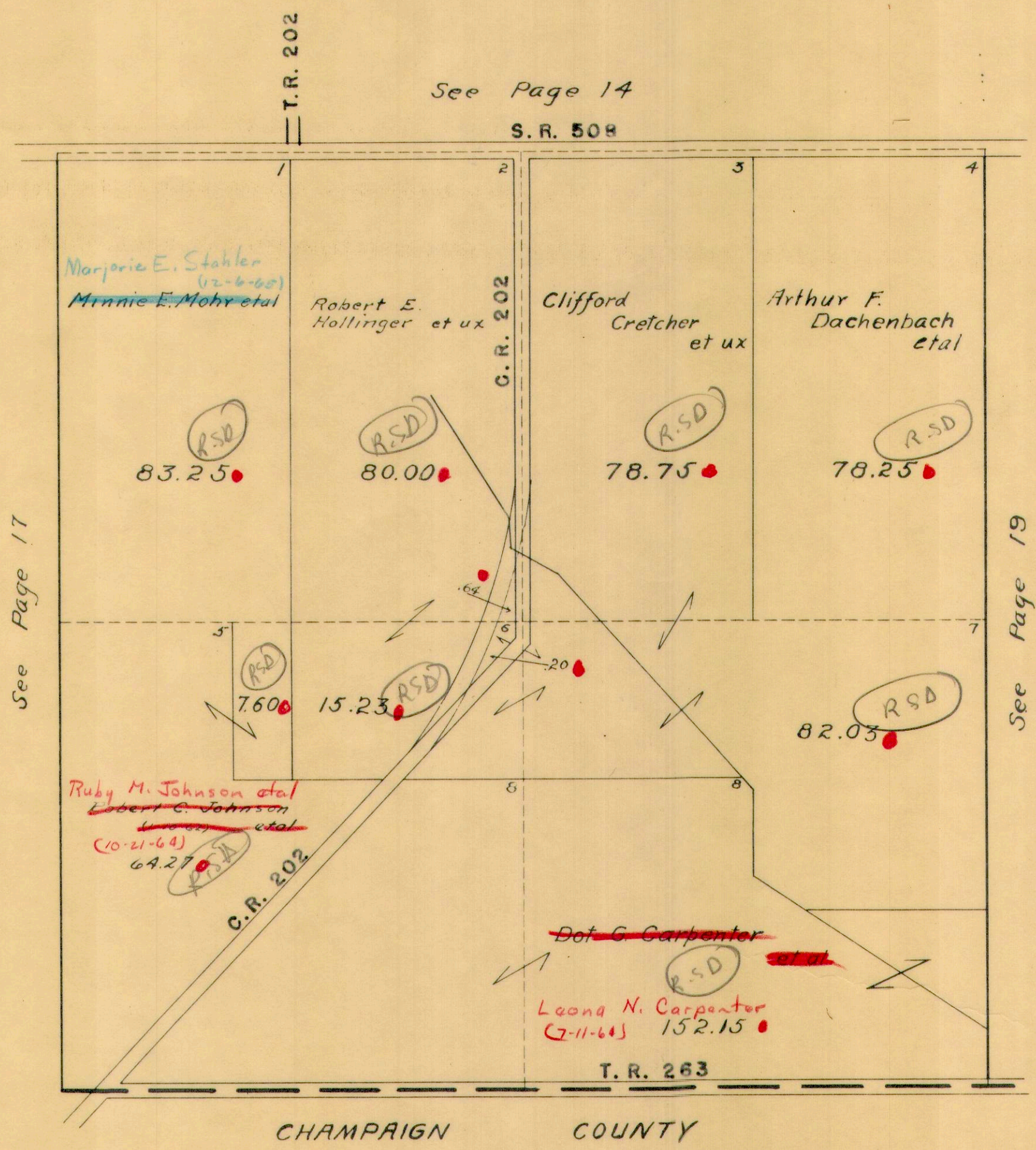
C.R. 62

CHAMPAIGN COUNTY



UNION TOWNSHIP  
SECTION 22 TOWN 4 RANGE 13

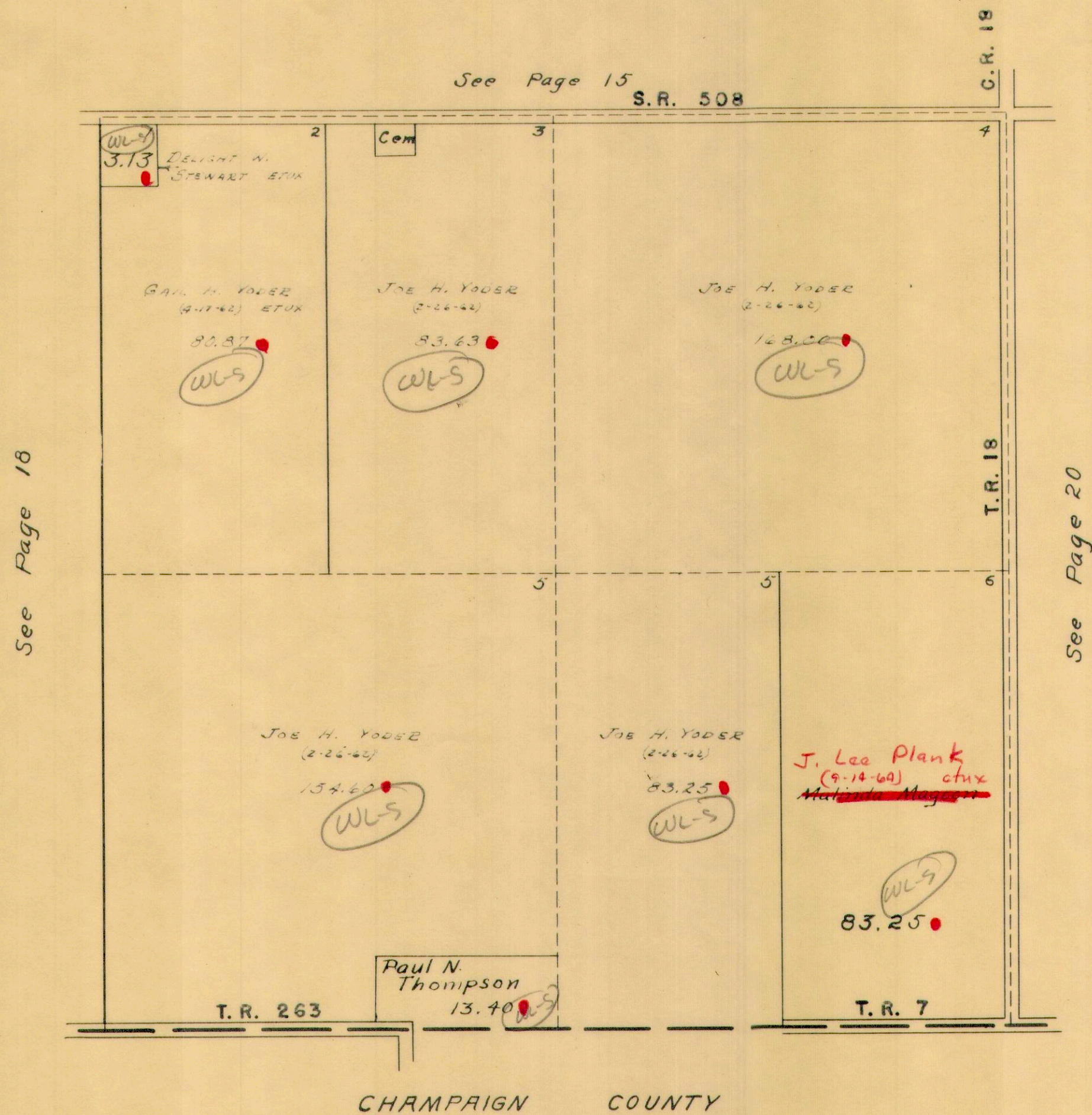
SCALE 10 CHAINS TO THE INCH





UNION TOWNSHIP  
SECTION 16 TOWN 4 RANGE 13

SCALE 10 CHAINS TO THE INCH



See Page 18

See Page 20

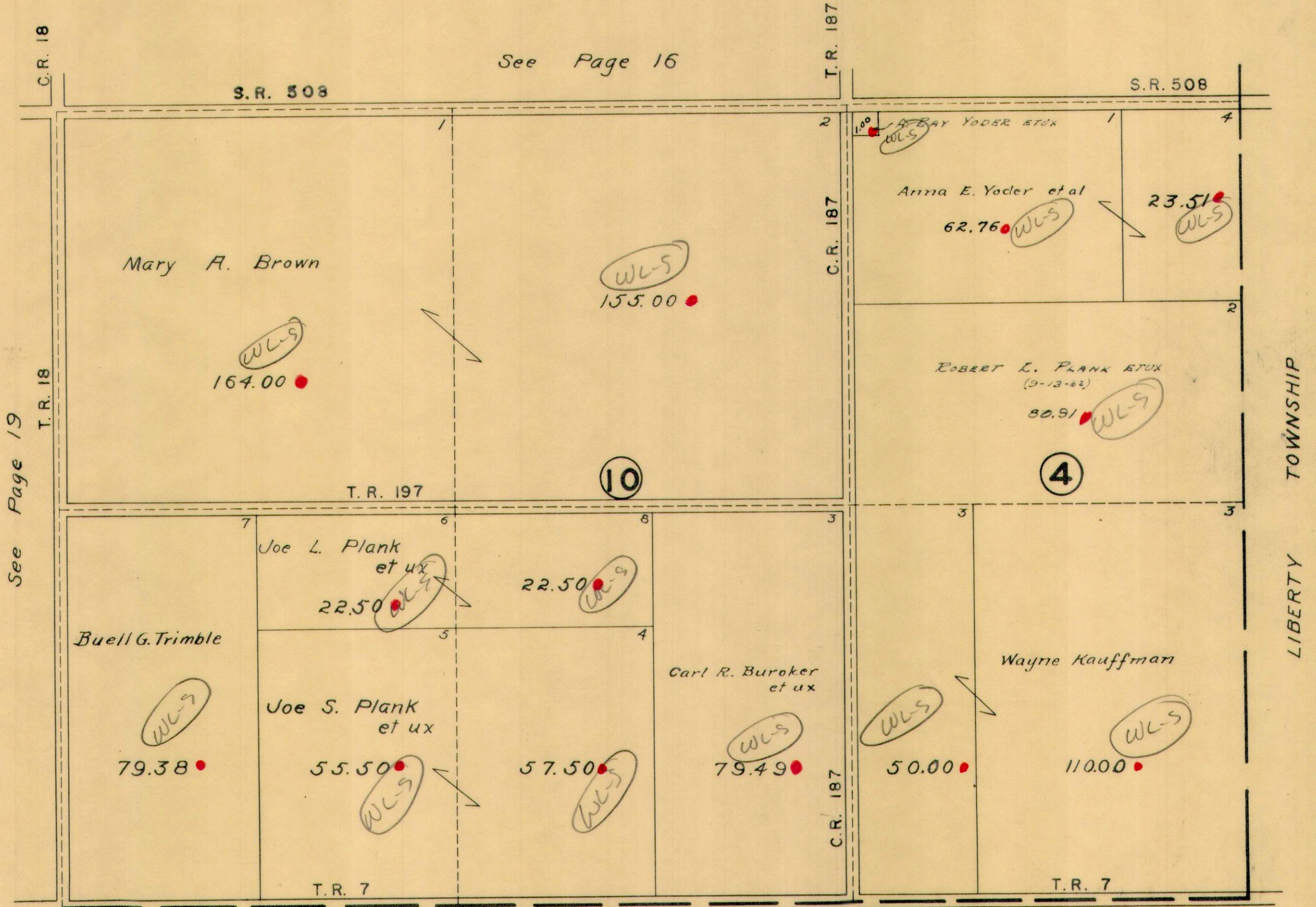
CHAMPAIGN COUNTY



SECTION 10 TOWN 4 RANGE 13

SECTION 4 TOWN 4 RANGE 13

SCALE 10 CHAINS TO THE INCH



CHAMPAIGN COUNTY