

PERRY
TOWNSHIP
1951

INDEX

VIRGINIA MILITARY SURVEYS PAGE

842	---	1
5288	---	1
5209	---	2
{ 775	---	3
{ 6155	---	3
13068	---	3
3436	---	4
5089	---	4
4210	---	5
5092 N. PART	---	6
5092 S. PART	---	7
4995	---	7
5091	---	8
13432	---	9
13529	---	9
14894	---	9
{ 12103	---	10
{ 13528	---	10
{ 13557	---	10
{ 13558	---	10
4813	---	11
4815	---	11
5088	---	12
9198	---	12
9370	---	12
9372	---	12
5875	---	13
5883	---	13
7288	---	13

VIRGINIA MILITARY SURVEYS PAGE

3159	---	14
3161	---	14
3753	---	14
4661	---	14
4676	---	14
4682	---	14
{ 9371	---	14
{ 12174	---	14
9676	---	14
4655	---	15
3164	---	16
4689	---	17
4810	---	18
6232	---	19
3154	---	20
4811	---	21
5275	---	22
12283	---	23
14755	---	23
545	---	24
{ 12399	---	24
{ 12404	---	24
{ 12395	---	24
{ 12427	---	24
{ 12428	---	24

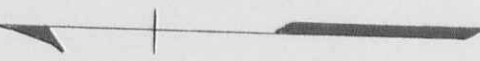
PAGE

WEST MANSFIELD CORPORATION	---	25
EAST LIBERTY NORTH EAST PART	---	26
EAST LIBERTY NORTH WEST PART	---	27
EAST LIBERTY SOUTH PART	---	28
GREENFIELD LOTS	---	29

PERRY TOWNSHIP
INDEX MAP

Corrected To:
January 1, 1955
January 1-1956
January 1-1957
January 1-1958

UNION COUNTY



BOKESCREEK TOWNSHIP

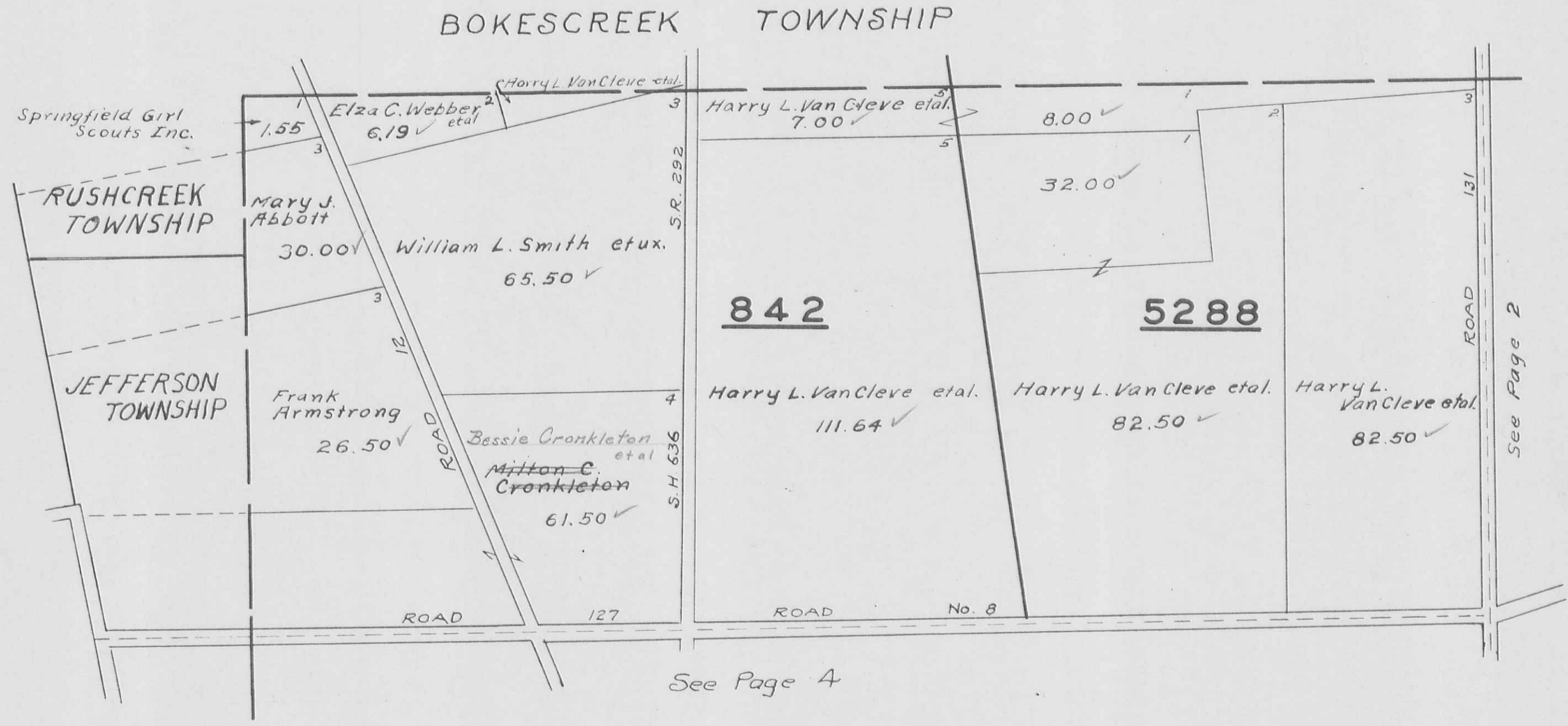
RUSHCREEK TOWNSHIP

JEFFERSON TOWNSHIP

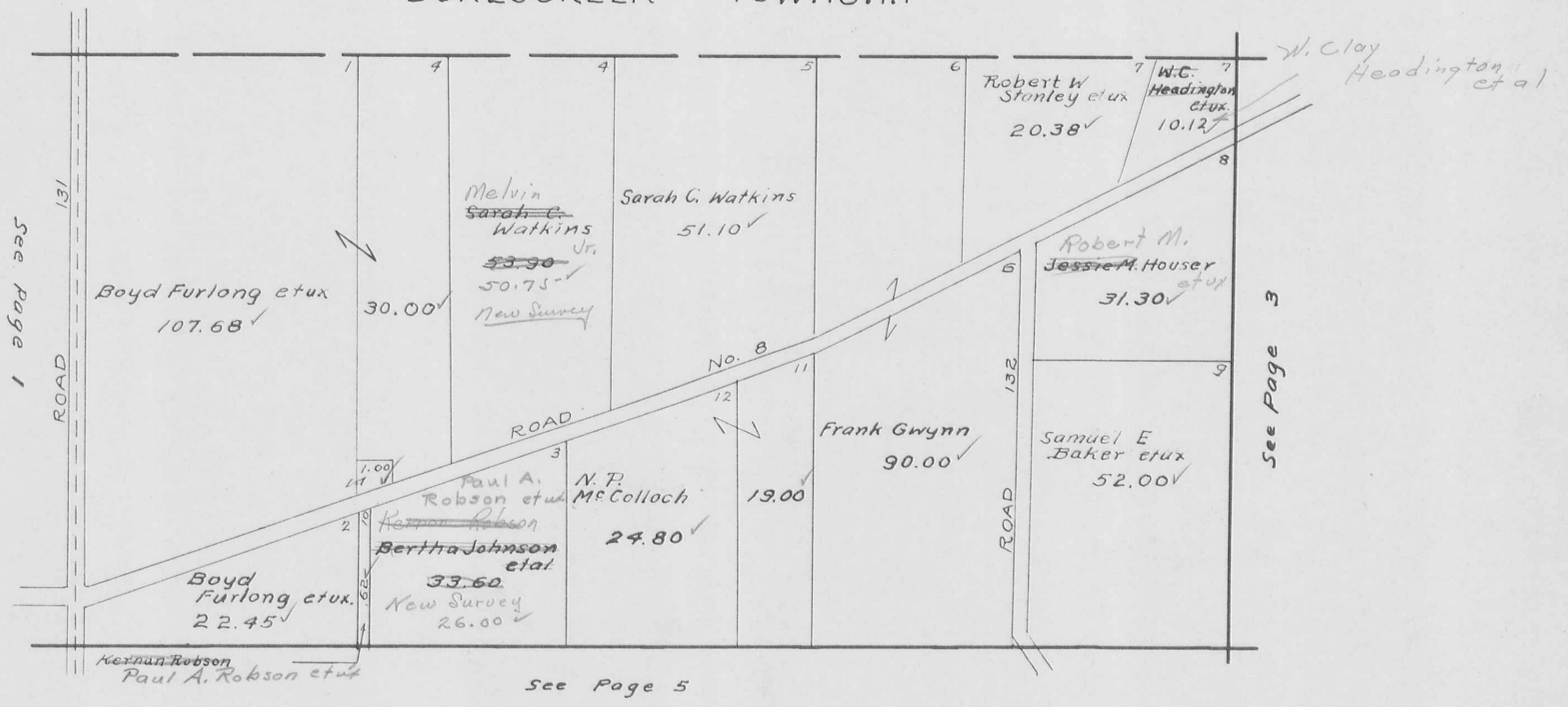
ZANE TOWNSHIP

842
5288

SCALE 10 CHAINS TO THE INCH



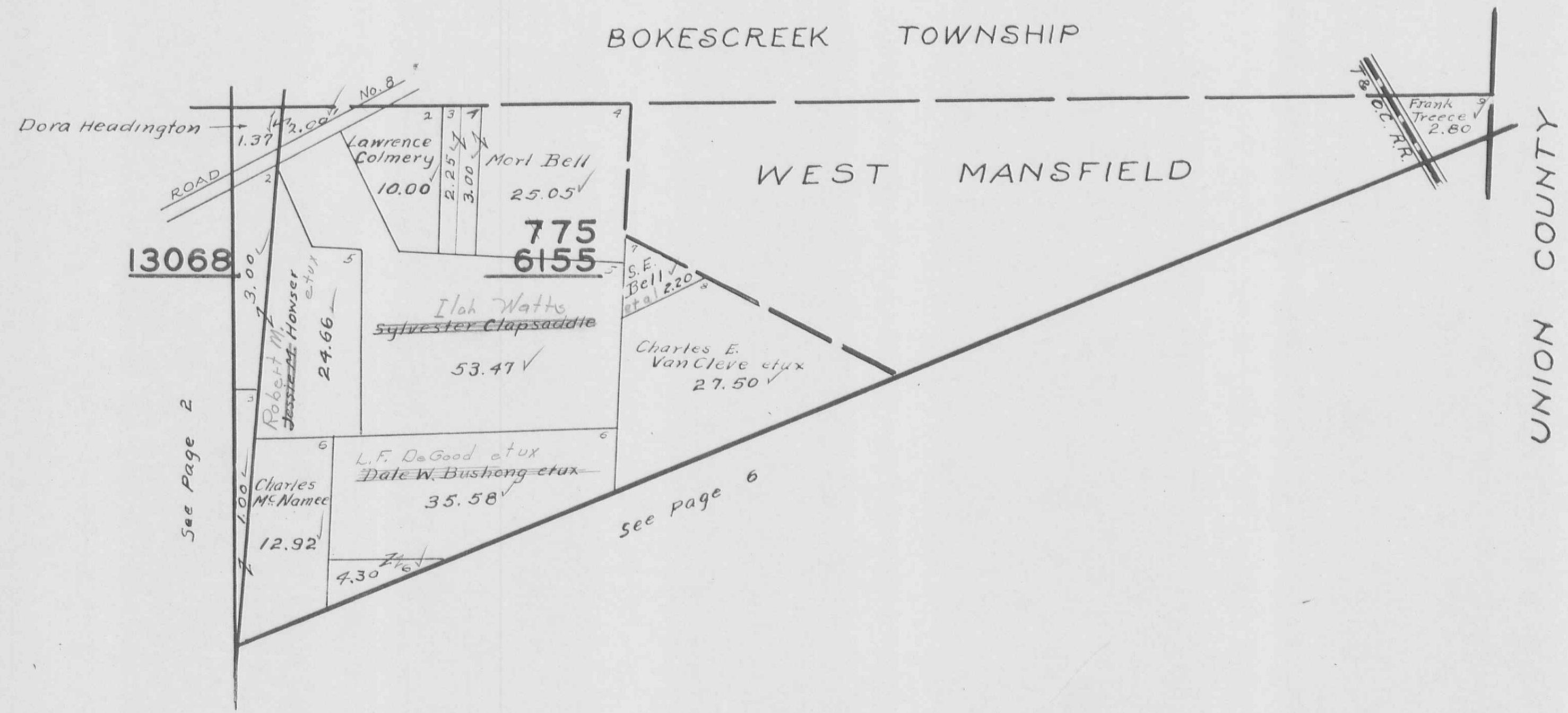
BOKESCREEK TOWNSHIP



PERRY TOWNSHIP
VIRGINIA MILITARY SURVEYS

775
6155
13068

SCALE 10 CHAINS TO THE INCH



VIRGINIA

MILITARY

SURVEYS

3436

5089

See Page 1 ROAD 127

SCALE 10 CHAINS TO THE INCH

ROAD No. 8



JEFFERSON TOWNSHIP

JEFFERSON TOWNSHIP

See Page 5

See Page 8

3436

5089

34.44

76.97

Carl W. Davis et ux 57.40

Delbert L. Gibson et ux 36.97

Delbert L. Gibson et ux 34.19

Wilson B. Evans et ux 121.62

Edwin D. Holycross 61.60

2.30	2.0
7.24	
6.60	7.70
S.H. 756	

Elbie Wilgus 4.00

Walter H. Barlup et ux ROAD 10.00

Glen Mabry et ux 34.11

J. Fred Elliott et ux 90.00

Doit E. Miller 127.74

Willis A. Levan et ux 146.28

J. Fred Elliott et ux 101.00

ROAD No. 2 Cemetery

Erwin Levan Leo Levan et ux Roy Clapsaddle et ux 38.20

Robert Jackson et ux 90.00

Maggie E. Cronkleton Clara A. Cronkleton et al.

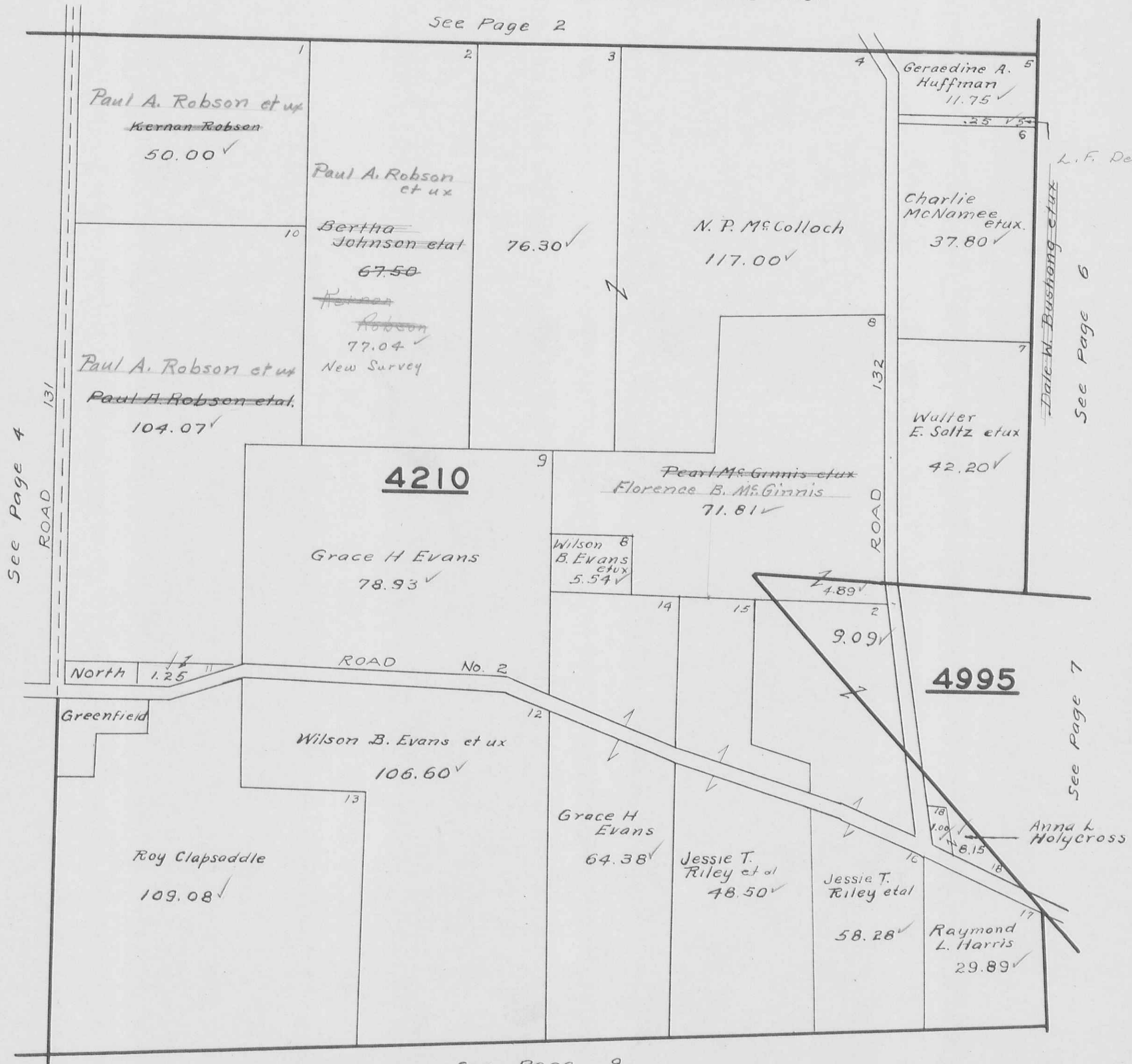
J. F. Elliott 10.50

Ralph T. Akey 1.16-7

PERRY TOWNSHIP
 VIRGINIA MILITARY SURVEYS 4210 4995

SCALE 10 CHAINS TO THE INCH

See Page 2



See Page 4

L. F. De Good et ux

See Page 6

See Page 7

See Page 9

SCALE 10 CHAINS TO THE INCH



See Page 5

See Page 3

See Page 7

UNION COUNTY

21 L.F. DeGood et ux
Dale W. Bushong et ux
36.00 ✓
Charles McNamee et ux
13.65 ✓
.35 ✓

20 Charlie McNamee et ux
74.15 ✓

22 Walter E. Saltz et ux
92.35 ✓

Raymond L. Clapsdale
120.30 ✓

Richard M. Larimer et ux
49.62 ✓

14 Willard Hall Hodsdon et ux
117.52 ✓
21.01 ✓
14.57 ✓

14 Bert Engle
10.00 ✓
5.43 ✓

15 Cecil C. Wilgus et ux
Richard M. Wilgus et ux
30.55 ✓

16 Robert Predmore et ux
1.00 ✓

Eva M. Stanley et ux
84.30 ✓

Willard Hall Hodsdon et ux
117.52 ✓

Willard Hall Hodsdon et ux
100.00 ✓

Donald G. Dugan et ux
W.M. Mitchell et ux
40.99 ✓

Merrell M. Polling et ux
12.08 ✓

G.H. Dean et ux
42.03 ✓

West Mansfield Club Conserv. Club
1344.9
8.73 AC
1402.4'

Edwin E. Moffett
Edwin F. Moffett
31.58
22.85 ✓

R.R.

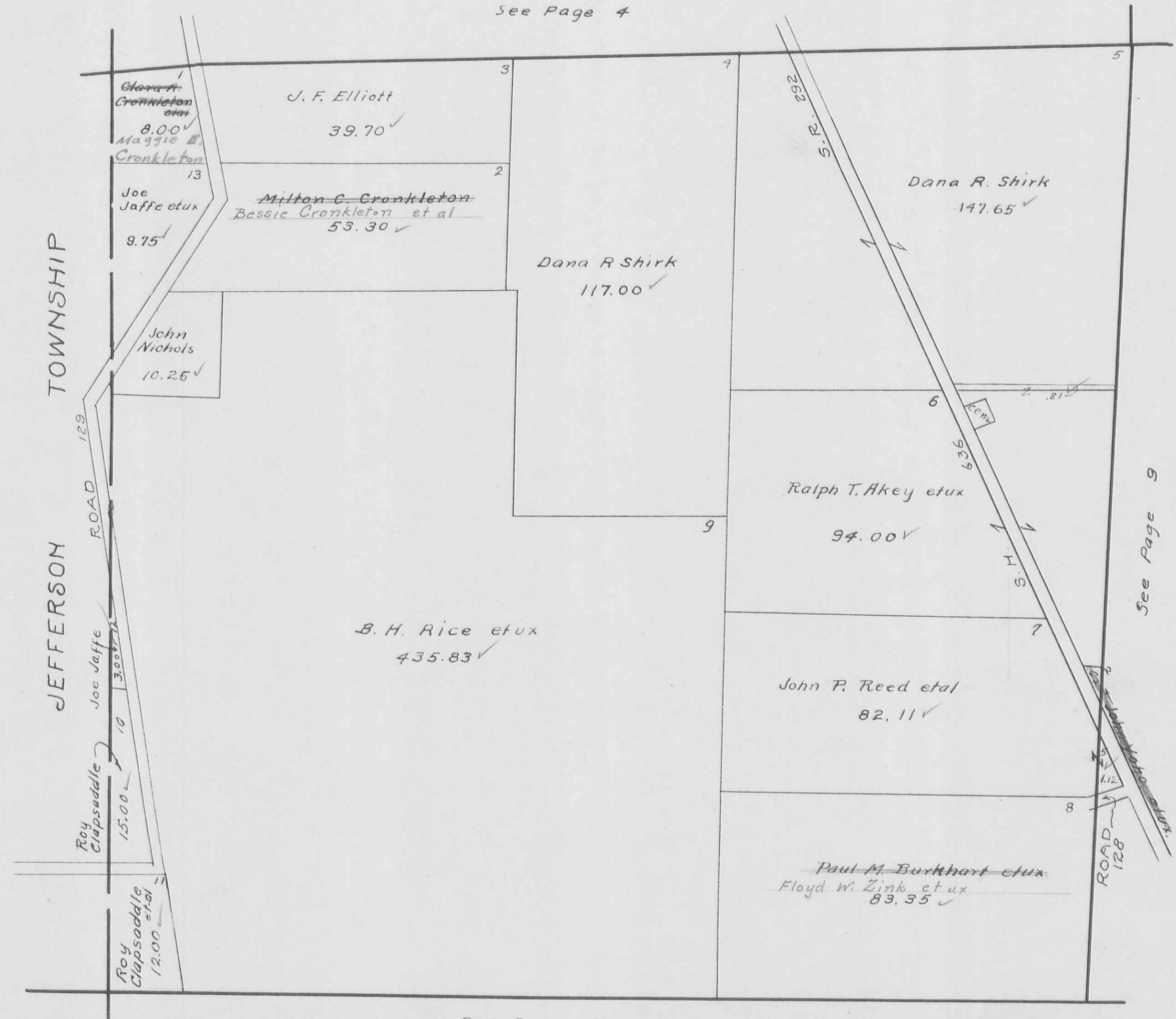
ROAD



PERRY TOWNSHIP
 VIRGINIA MILITARY SURVEY 5091

SCALE 10 CHAINS TO THE INCH

See Page 4



JEFFERSON TOWNSHIP

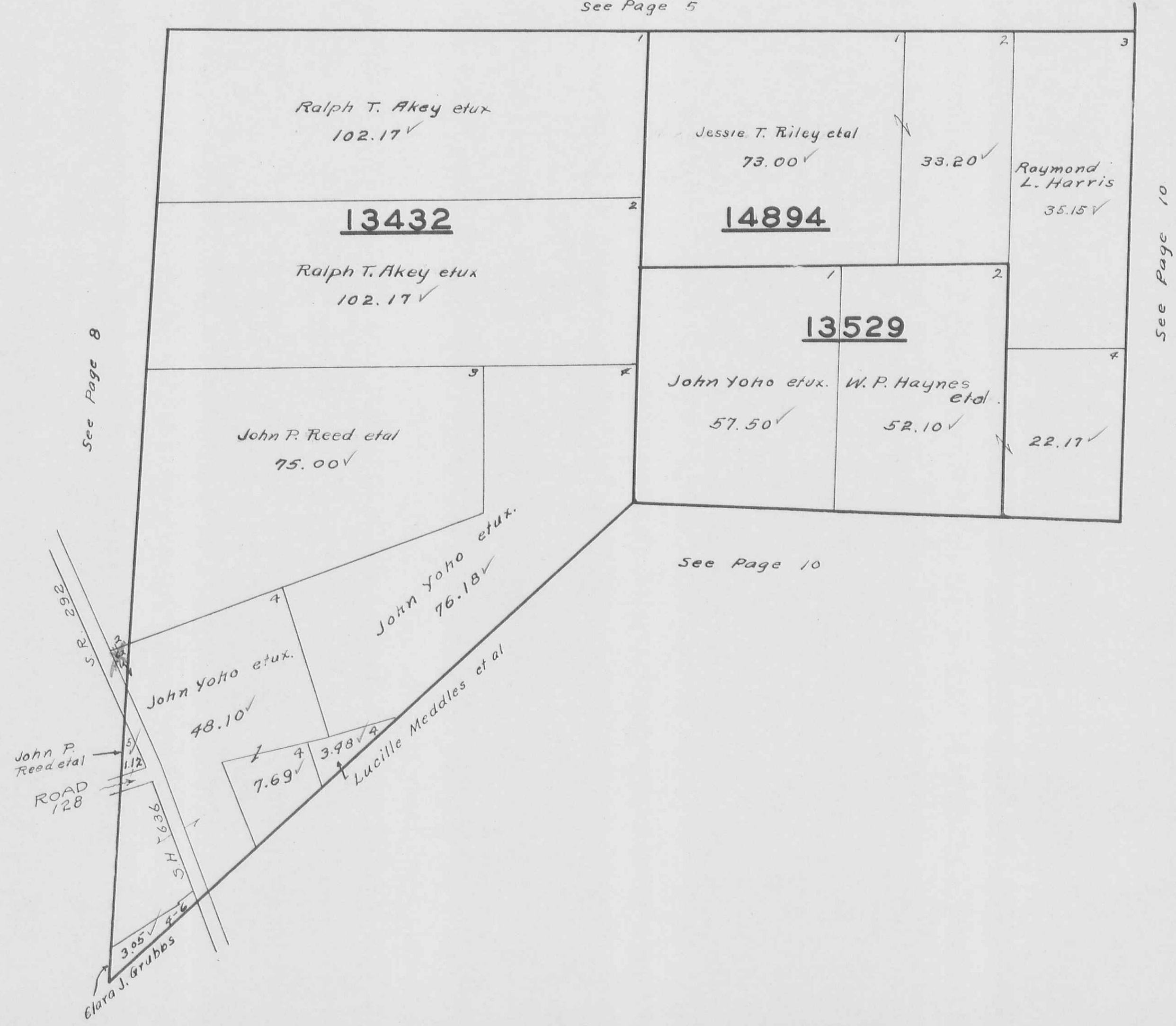
See Page 9

See Page 12

PERRY TOWNSHIP
 VIRGINIA MILITARY SURVEYS

SCALE 10 CHAINS TO THE INCH

See Page 5



PERRY TOWNSHIP
VIRGINIA MILITARY SURVEYS

12103
13528
13557
13558

SCALE 10 CHAINS TO THE INCH

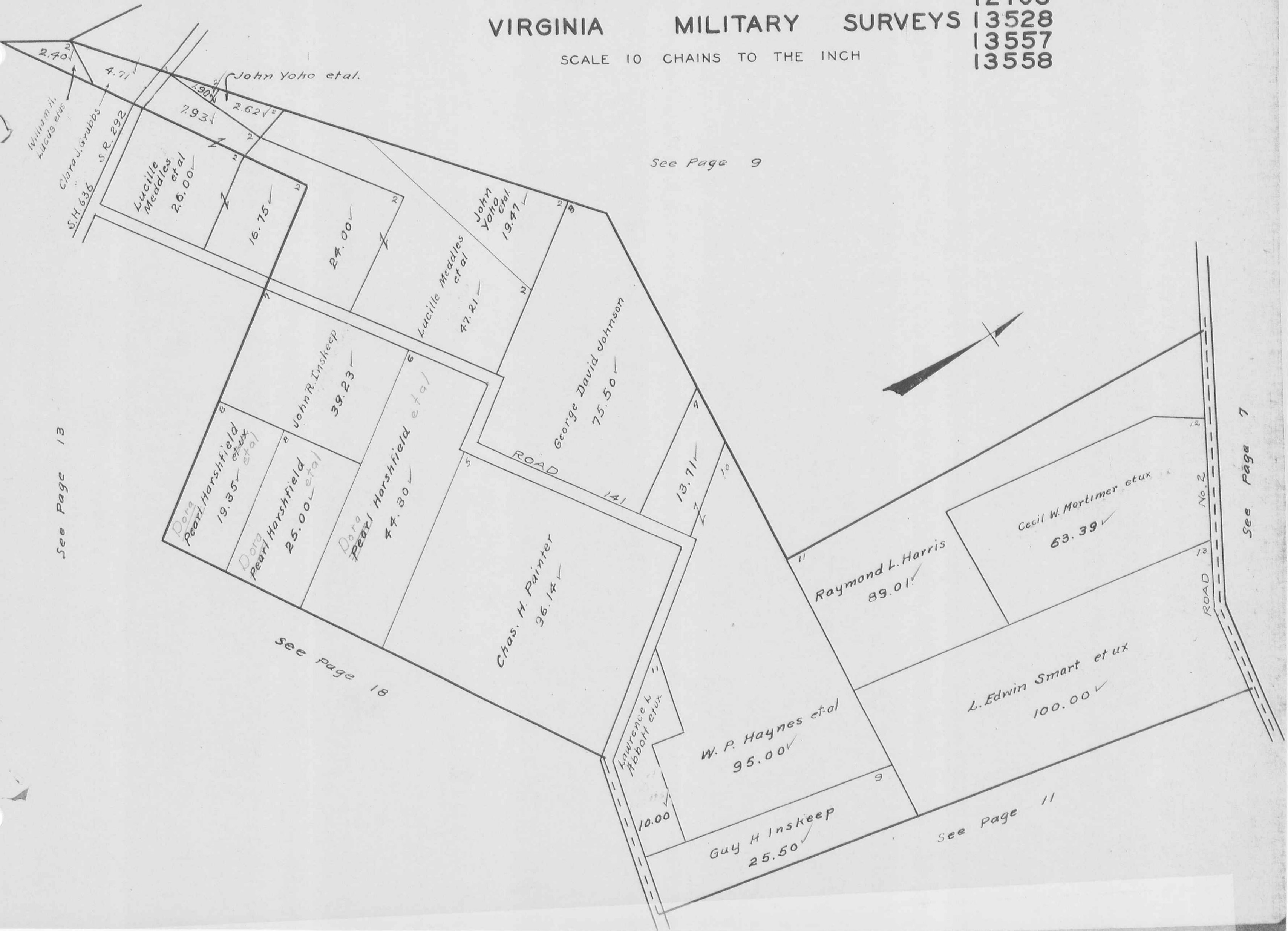
See Page 9

See Page 13

See page 18

See Page 11

See Page 7



VIRGINIA

MILITARY

SURVEYS

4813

4815

SCALE 10 CHAINS TO THE INCH



See Page 7

ROAD 2

Lafayette Wilgus
78.07 ✓

Omar E. Powell et ux.
74.20 ✓

~~Guy H. Inskeep et ux.~~
John Cummins et ux.
40.00 ✓

David C. Johnson et ux.
76.47 ✓

~~Wilbur M. Foght et ux.~~
Philemon A. Watkins et ux.
40.00 ✓

2.07 ✓

18.89 ✓

11.00 ✓

3.80 ✓

4813

John H. Hatcher et ux.
52.53 ✓

4815

Cuba B. McFarland et ux.
96.25 ✓

Guy H. Inskeep
67.75 ✓

Lloyd Davis
62.00 ✓

C. A. Potee et ux.
57.57 ✓

Harold E. Longbrake et ux.
33.57 ✓

COUNTY

UNION

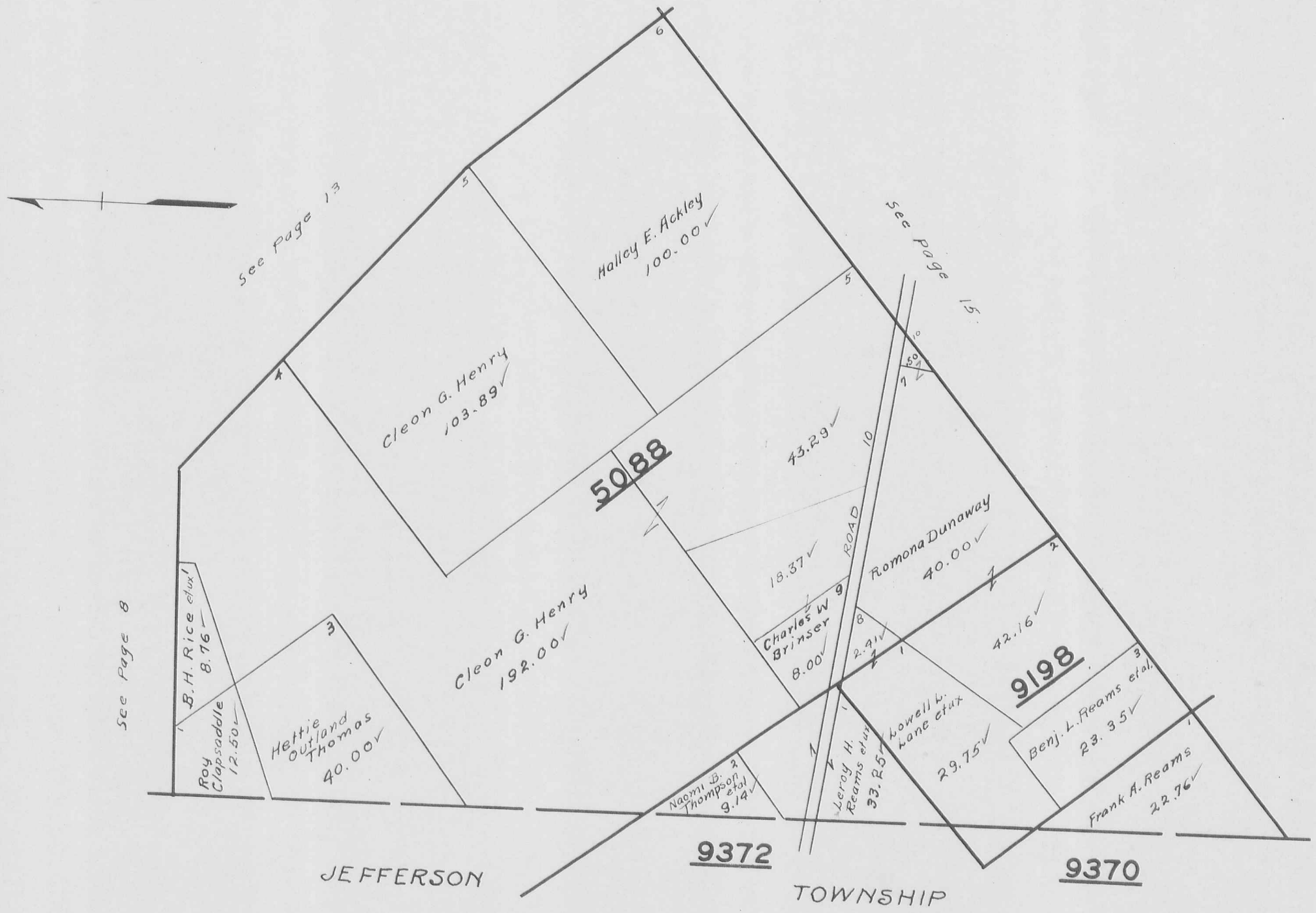
See Page 10

ROAD 141

See Page 19

PERRY TOWNSHIP
VIRGINIA MILITARY SURVEYS
SCALE 10 CHAINS TO THE INCH

PAGE 12
5088
9198
9370
9372



See Page 8

See Page 13

See Page 15

JEFFERSON

9372

TOWNSHIP

9370

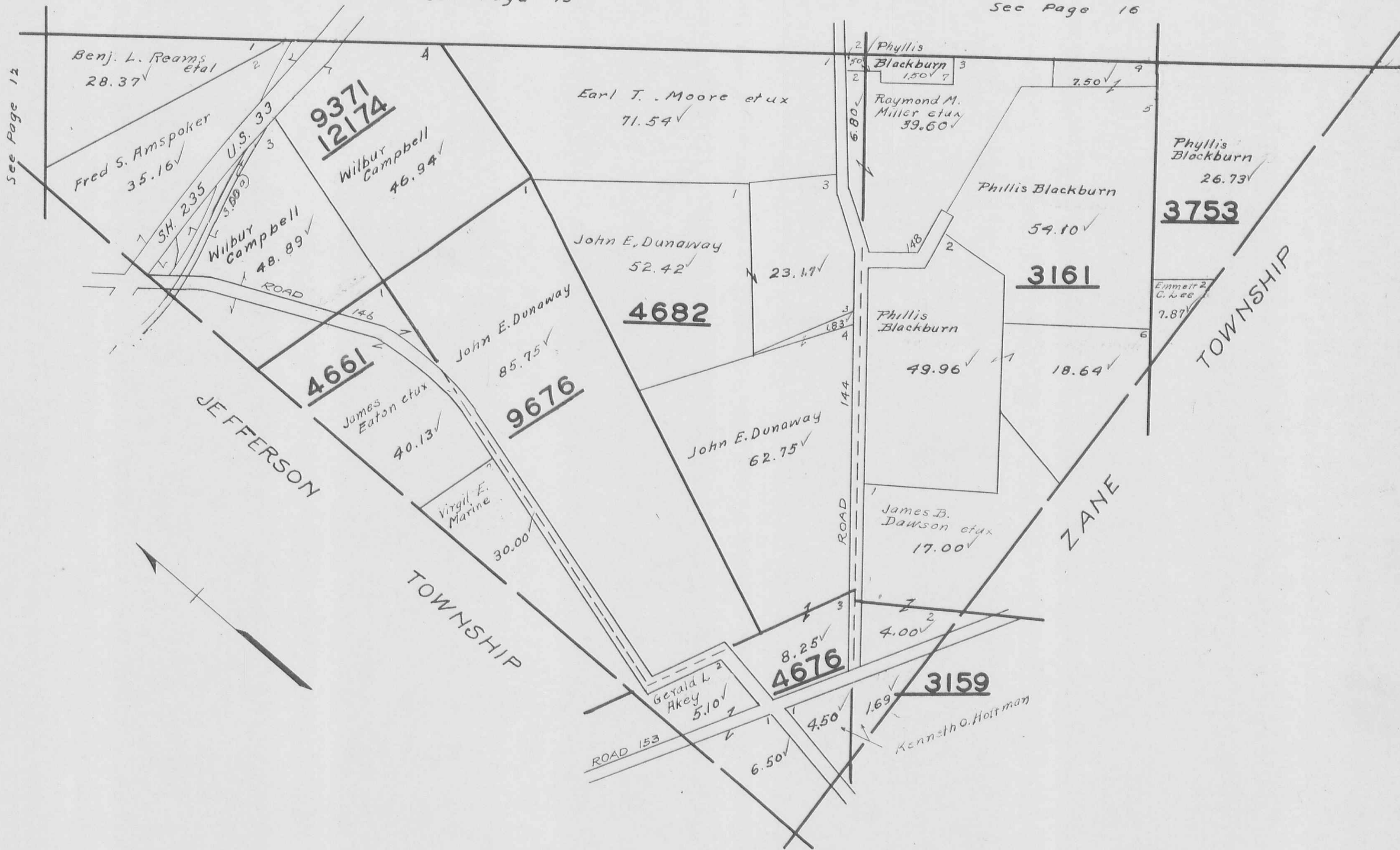
PERRY TOWNSHIP
VIRGINIA MILITARY SURVEYS

PAGE 14
3159 4661 9676
3161 4676 12174
3753 9371 4682

SCALE 10 CHAINS TO THE INCH

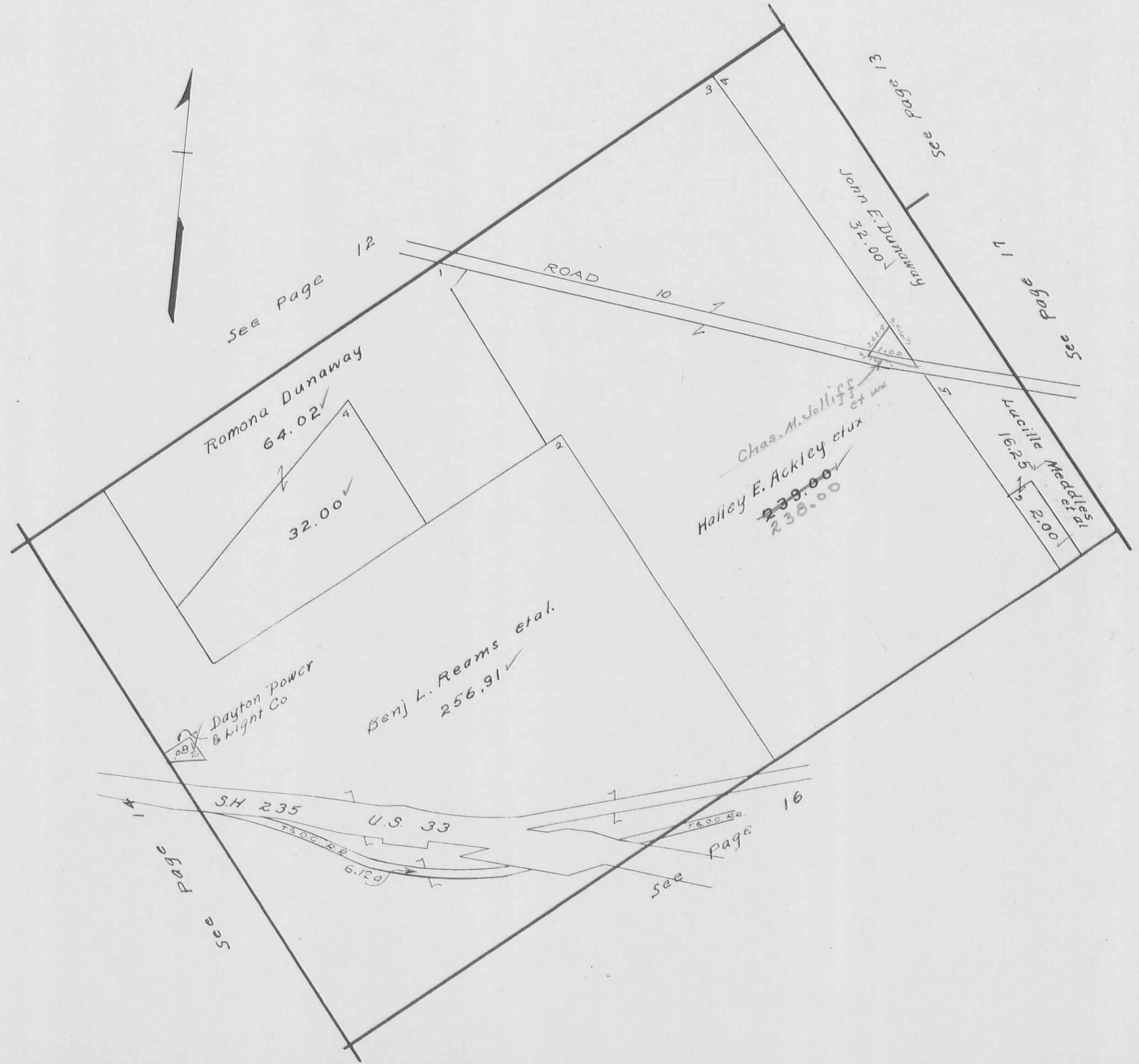
See Page 15

See Page 16



PERRY TOWNSHIP
VIRGINIA MILITARY SURVEY 4655

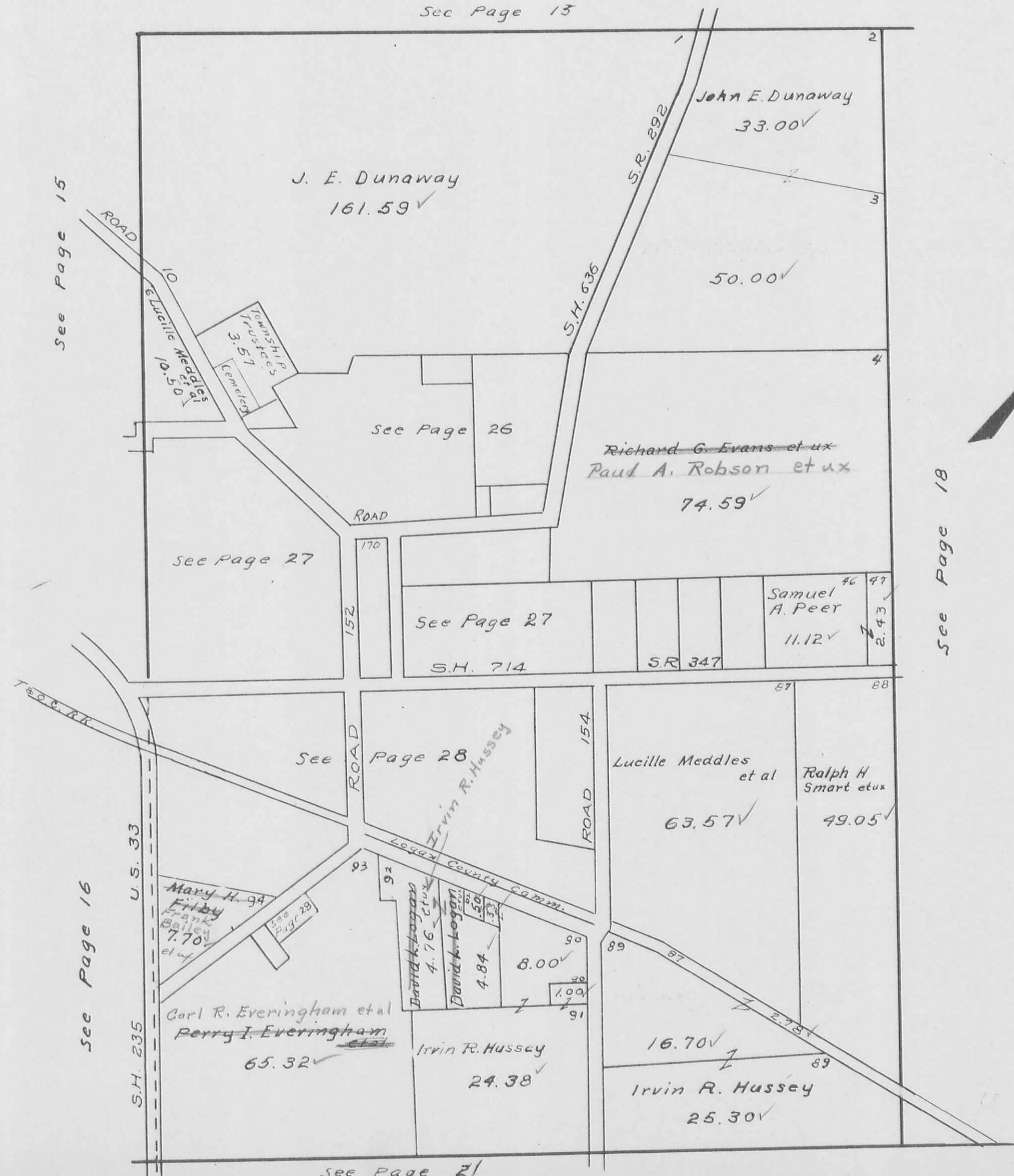
SCALE 10 CHAINS TO THE INCH



PERRY TOWNSHIP
VIRGINIA MILITARY SURVEY 4689

SCALE 10 CHAINS TO THE INCH

See Page 15



See Page 15

See Page 16

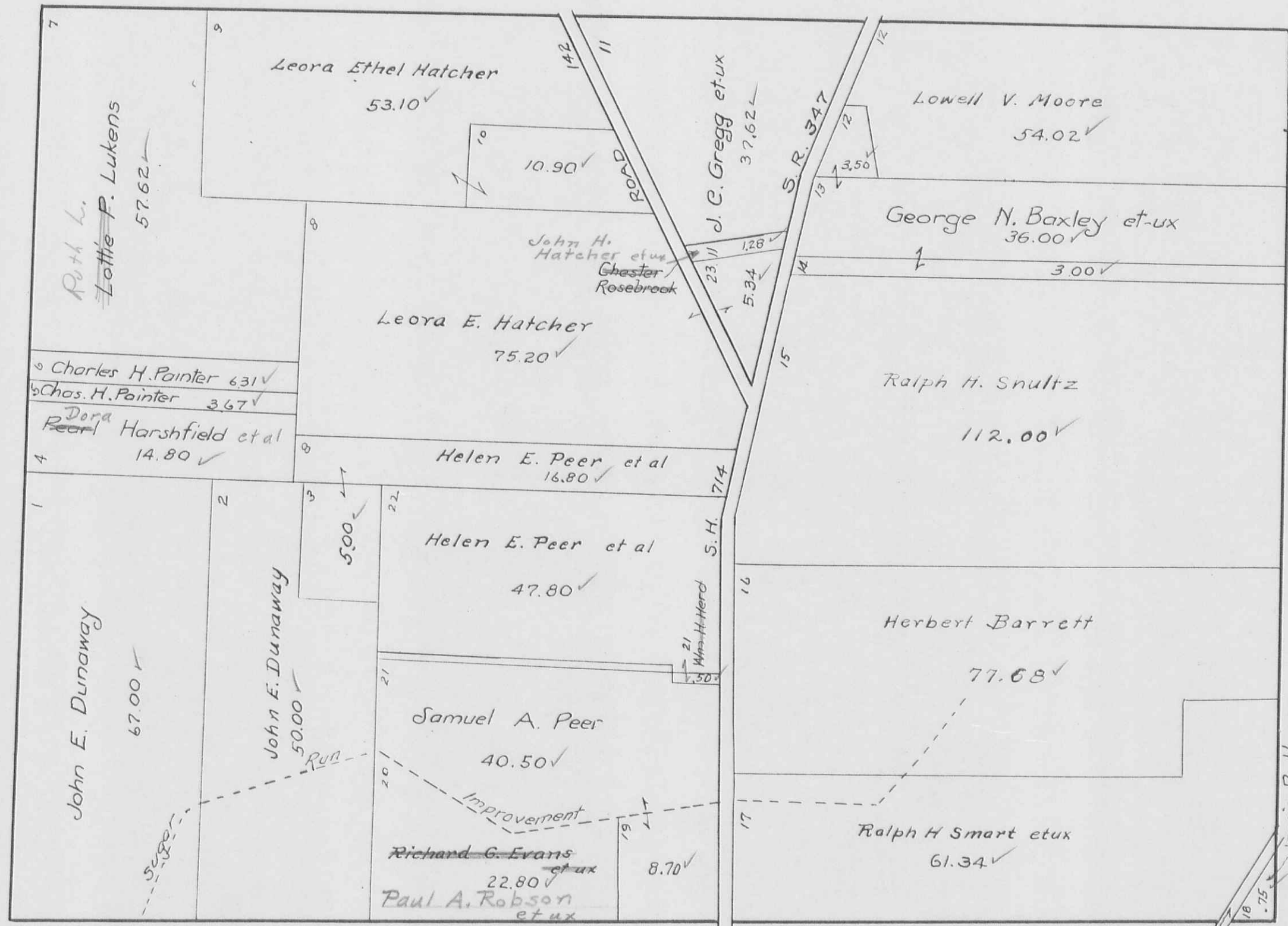
See Page 18

See Page 21

VIRGINIA MILITARY SURVEY 4810

SCALE 10 CHAINS TO THE INCH

See Page 19



See Page 10

See Page 17

See Page 23

See Page 22

VIRGINIA MILITARY SURVEY 6232

SCALE 10 CHAINS TO THE INCH



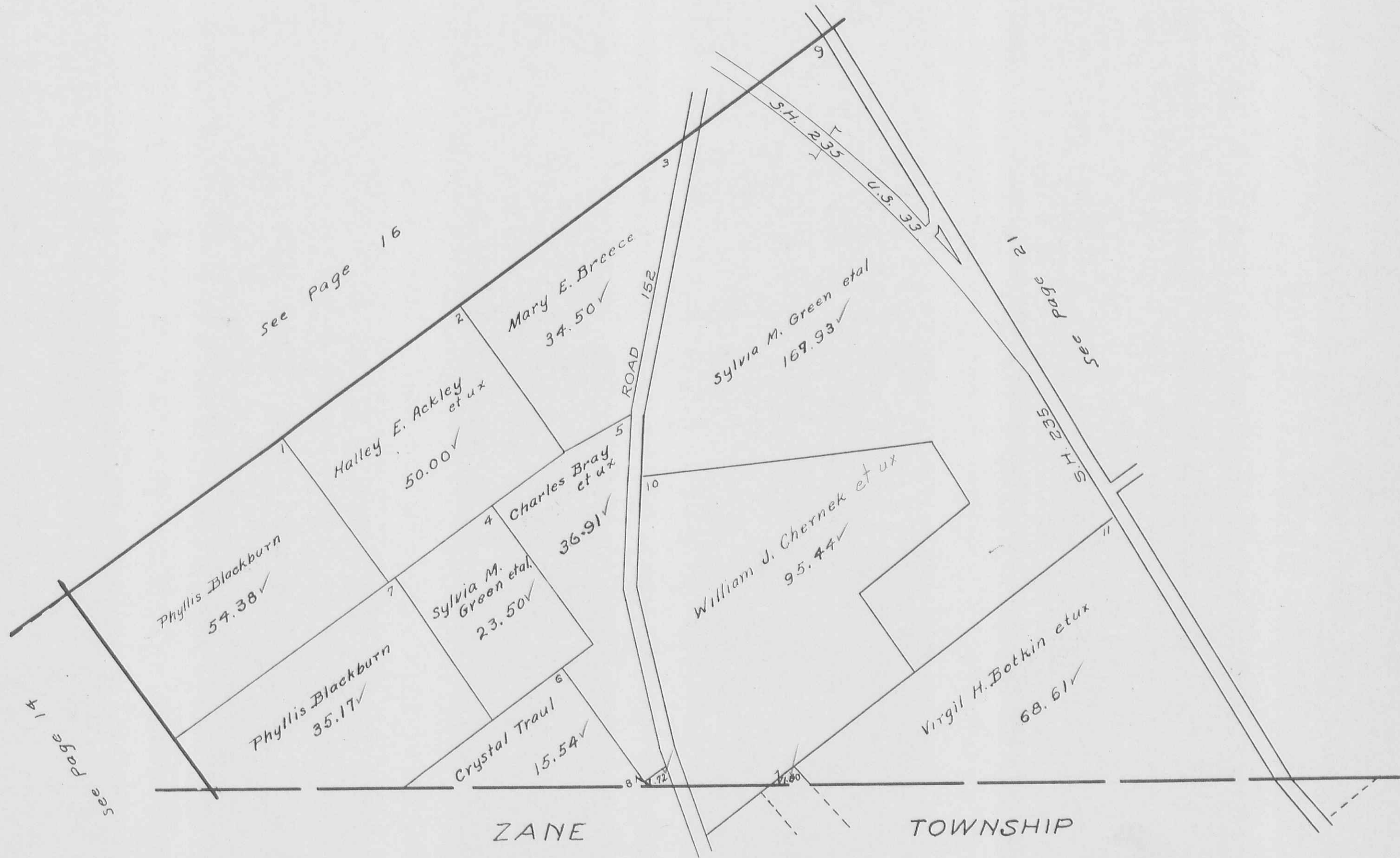
See Page 10

See Page 11

See Page 18

See Page 23

UNION COUNTY



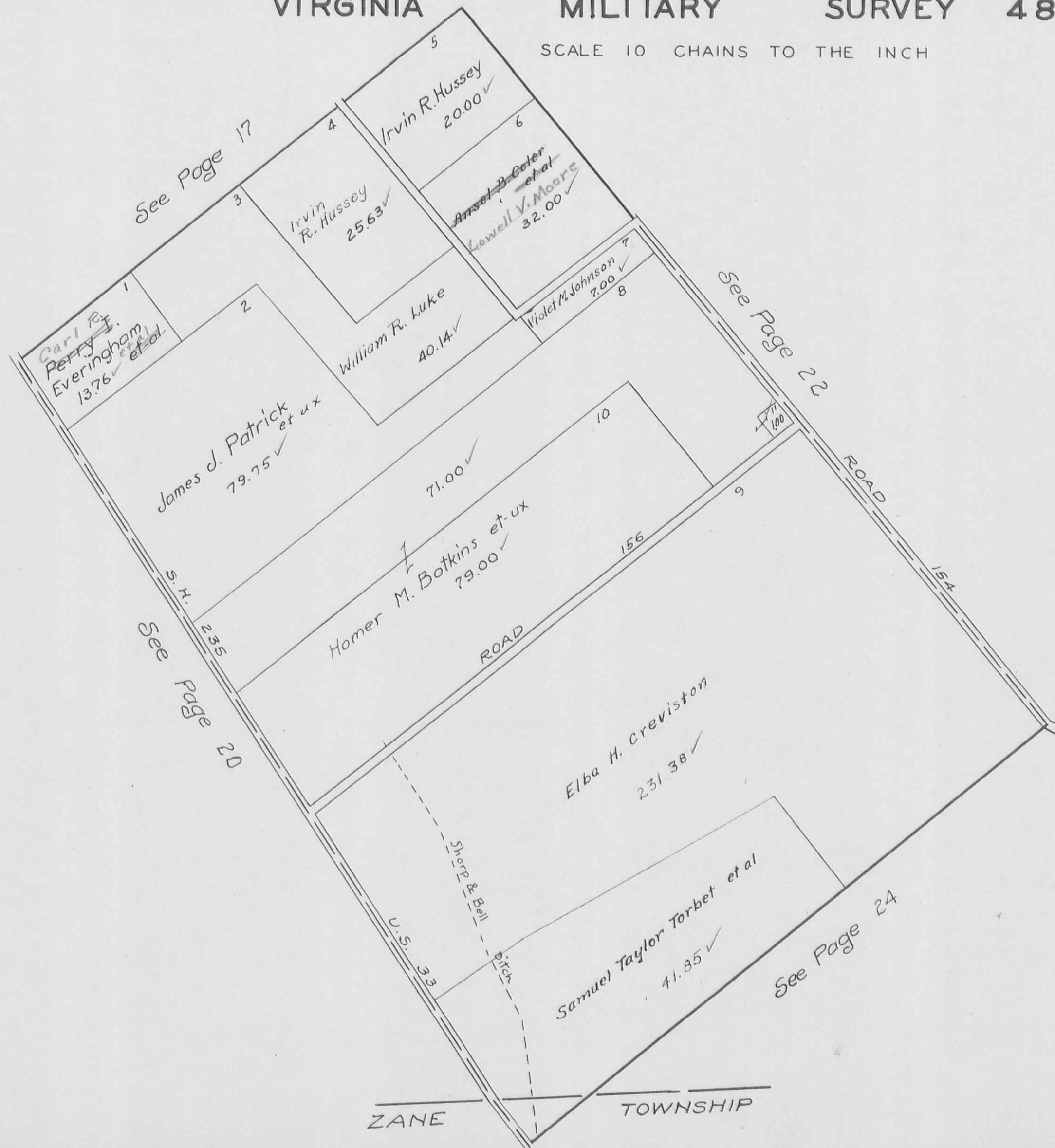
VIRGINIA

MILITARY

SURVEY

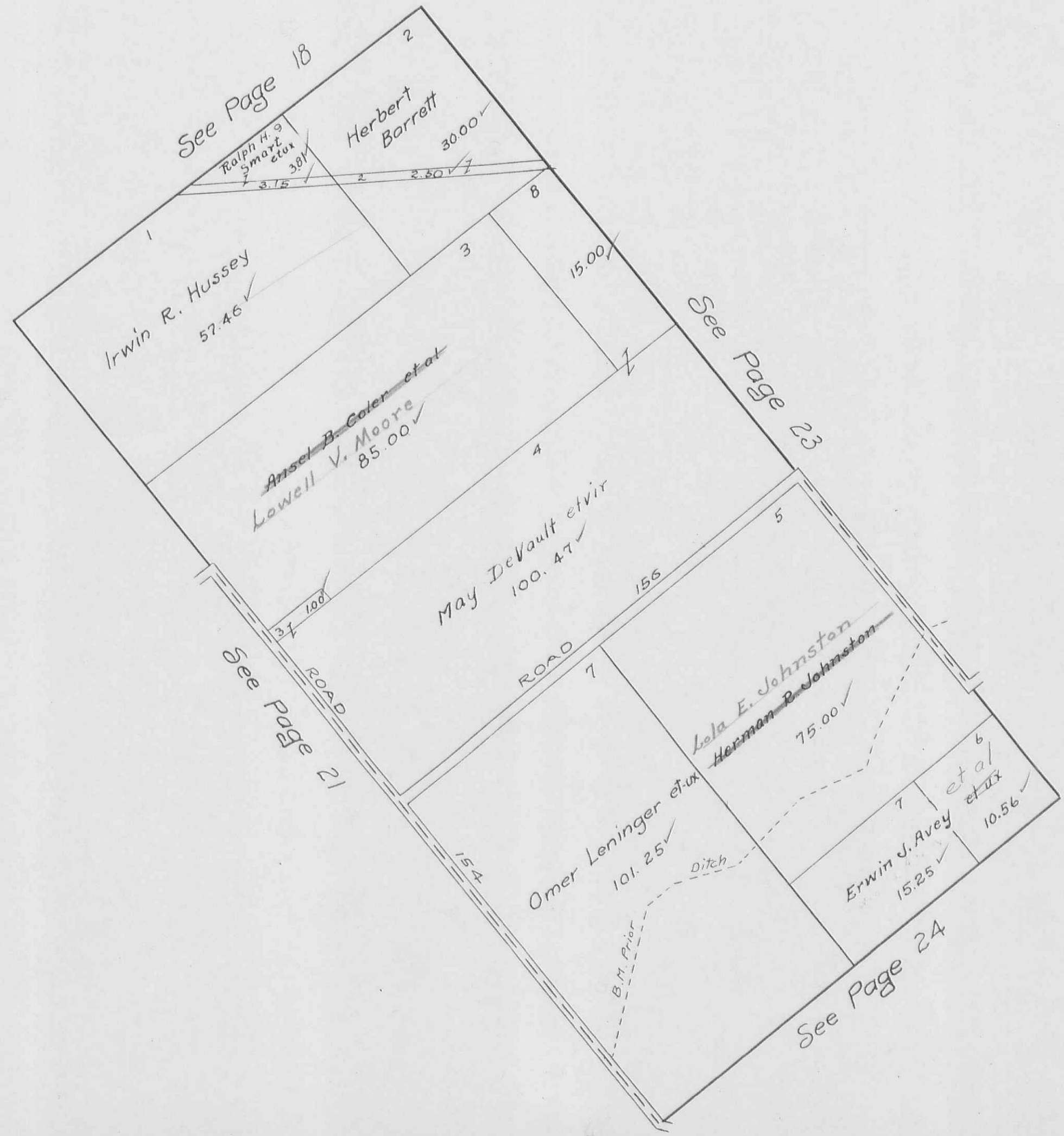
4811

SCALE 10 CHAINS TO THE INCH



PERRY TOWNSHIP
VIRGINIA MILITARY SURVEY 5275

SCALE 10 CHAINS TO THE INCH



12283
14755

SCALE 10 CHAINS TO THE INCH

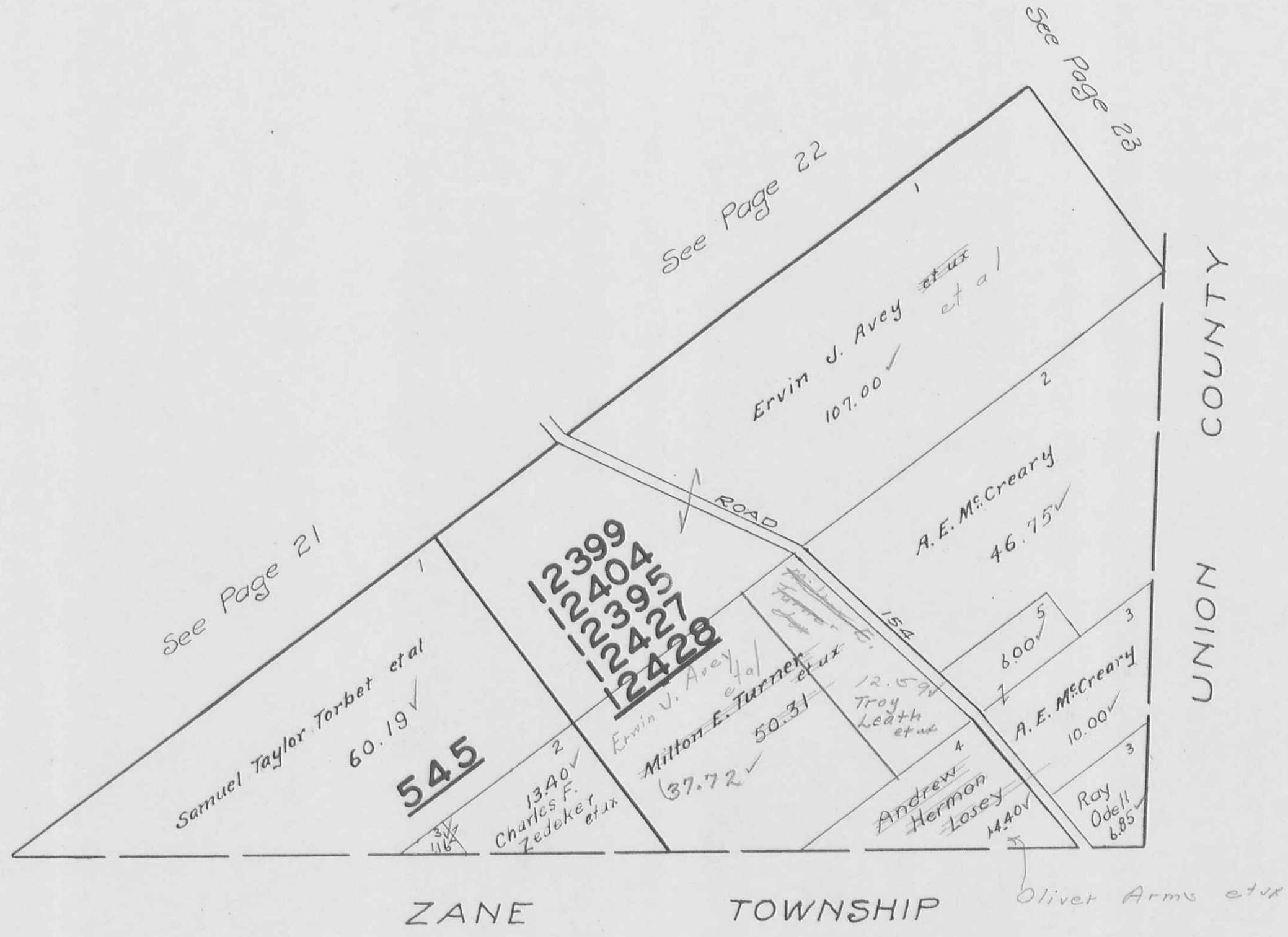
UNION COUNTY



PERRY TOWNSHIP
VIRGINIA MILITARY SURVEYS

SCALE 10 CHAINS TO THE INCH

545
12399
12404
12395
12427
12428

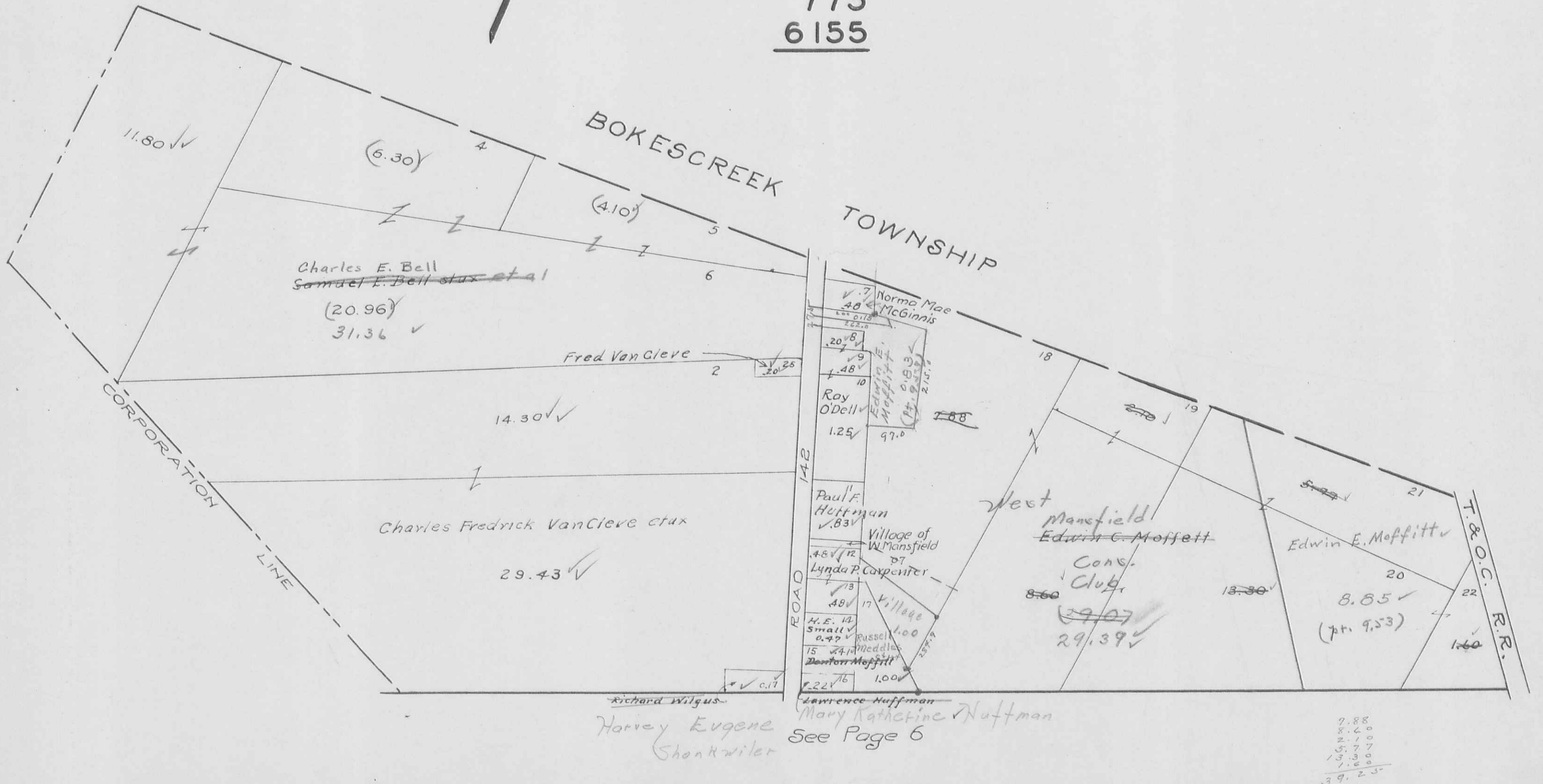


PERRY TOWNSHIP
 WEST MANSFIELD CORPORATION

SCALE 300 FEET TO THE INCH

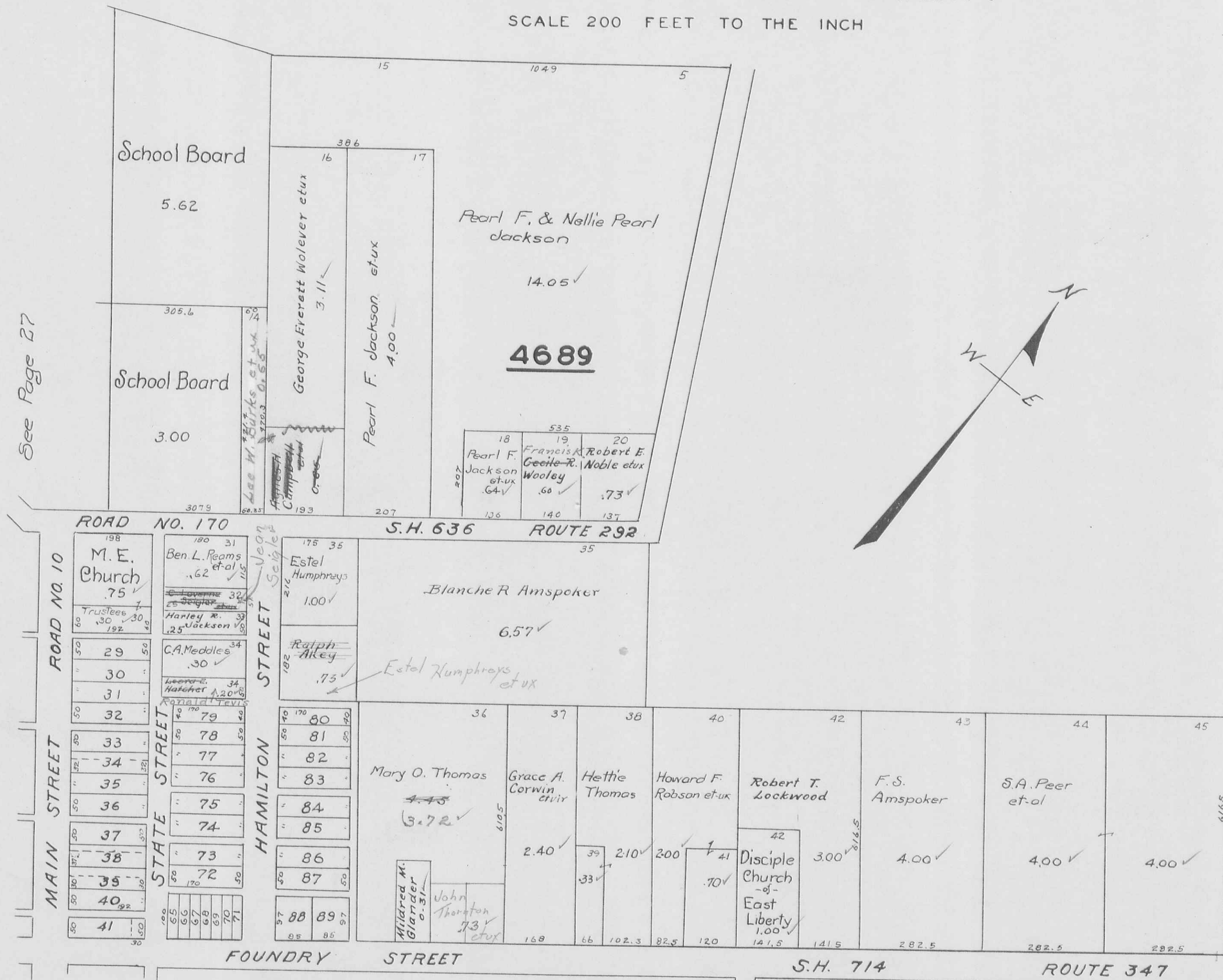


775
6155



NORTH EAST PART EAST LIBERTY

SCALE 200 FEET TO THE INCH



See Page 27

ROAD NO. 170 S.H. 636 ROUTE 292

ROAD NO. 10

MAIN STREET

STATE STREET

NEAR SEIGLER STREET

HAMILTON STREET

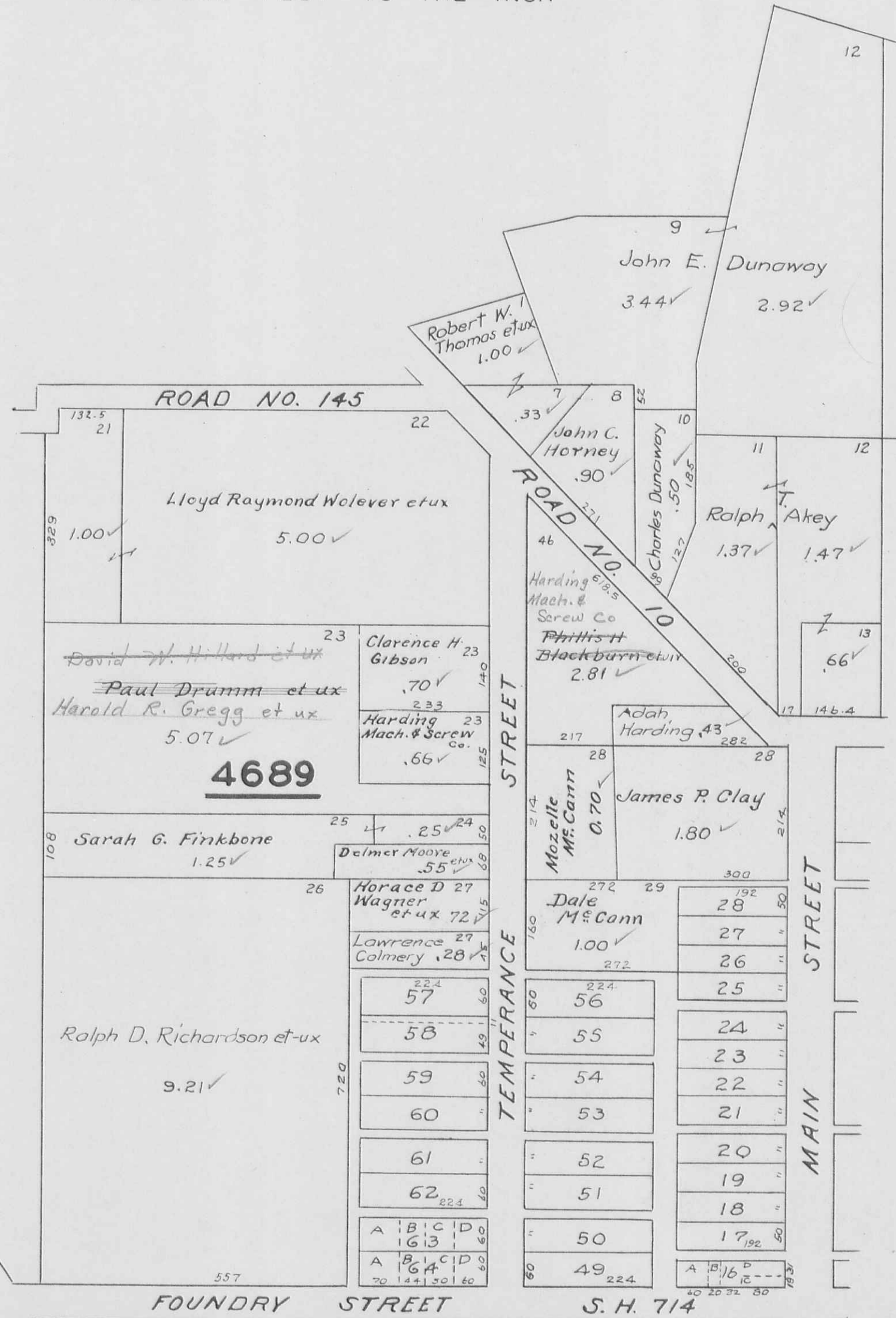
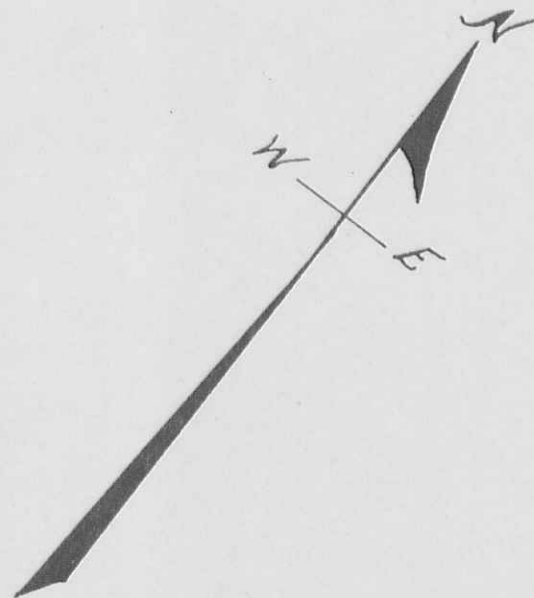
FOUNDRY STREET

S.H. 714 ROUTE 347

See Page 28

NORTH WEST PART EAST LIBERTY

SCALE 200 FEET TO THE INCH



4689

See Page 26

FOUNDRY STREET S. H. 714

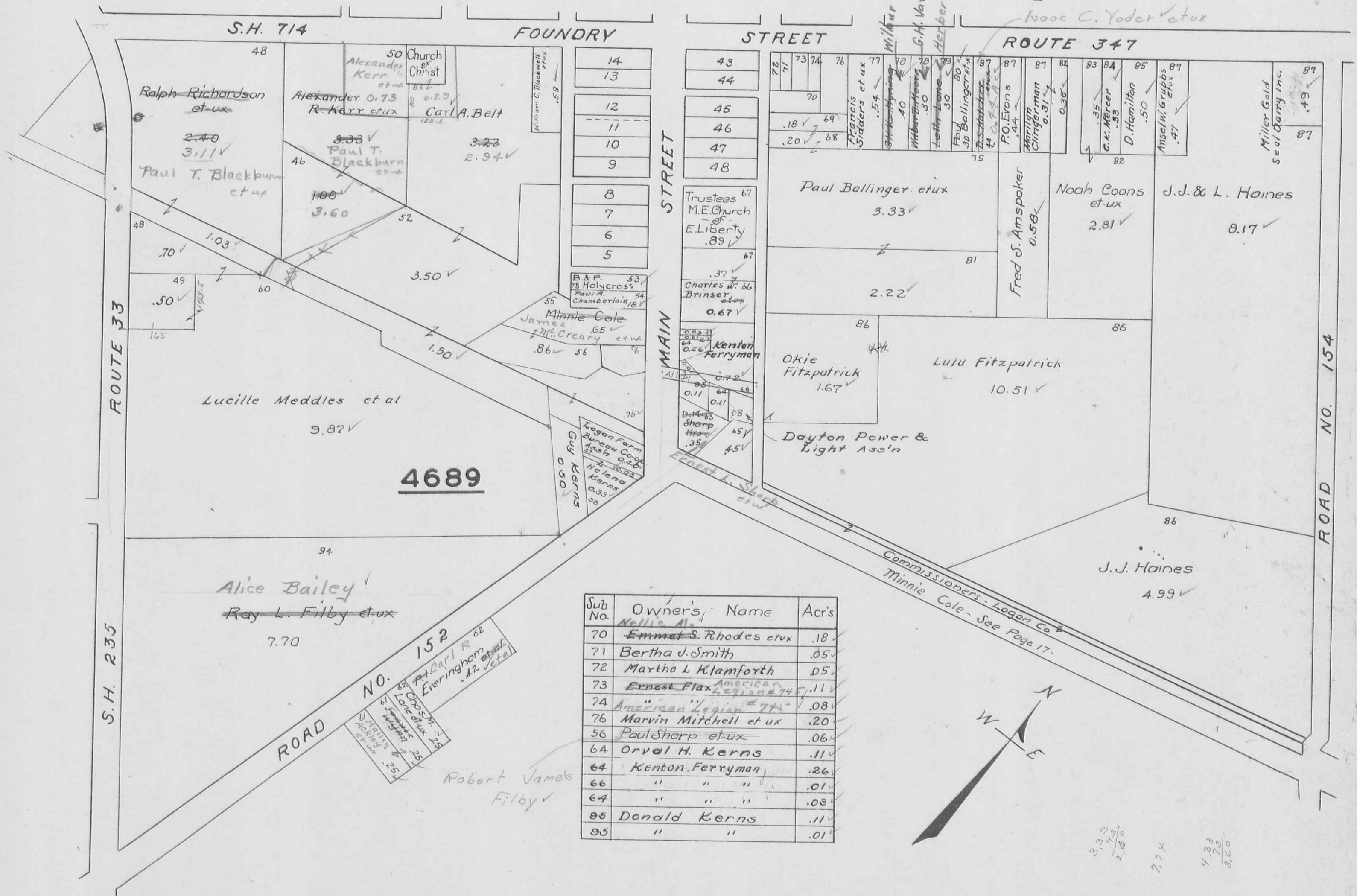
See Page 28

PERRY TOWNSHIP SOUTH PART EAST LIBERTY

SCALE 200 FEET TO THE INCH

See Page 26

See Page 27



Sub No.	Owner's Name	Acr's
70	Emmet S. Rhodes et ux	.18
71	Bertha J. Smith	.05
72	Martha L. Klamforth	.05
73	Ernest Flax	.11
74	American Legion # 74	.08
76	Marvin Mitchell et ux	.20
56	Paul Sharp et ux	.06
64	Orval H. Kerns	.11
64	Kenton Ferryman	.26
66	" " "	.01
64	" " "	.03
95	Donald Kerns	.11
95	" " "	.01

$$\begin{array}{r} 3.33 \\ 1.79 \\ \hline 2.60 \end{array}$$

 7.74

$$\begin{array}{r} 4.33 \\ 1.29 \\ \hline 3.60 \end{array}$$

VIRGINIA MILITARY SURVEY 4210
GREENFIELD

SCALE 150 FEET TO THE INCH

