

McARTHUR

TOWNSHIP

1951

INDEX

MAP

VIRGINIA MILITARY SURVEYS	PAGE
9946 -----	1
9925 -----	1
10121 -----	1
10951 -----	1
12052 -----	1
9927 -----	2
10434 -----	2
12742 -----	2
13715 -----	2
9903 ---NORTH---PART---	3
9928 ---NORTH---PART---	3
12320 -----	3
12350 -----	3
9903 ---SOUTH---PART---	4
9928 ---SOUTH---PART---	4
9904 -----	5
9929 -----	6
9930 -----	7

VIRGINIA MILITARY SURVEYS	PAGE
9931 -----	8
9932 -----	9
9905 -----	10
9906 -----	11
14033 -----	11
9907 -----	12
9902 -----	13
12168 -----	14
MSPHERSON -----	16
10122 -----	17
10248 -----	17
10249 -----	17
9881 -----	18
10306 -----	19
10307 -----	19
9883 -----	20
9884 -----	21
9885 -----	21

SECTION	TOWN	RANGE	PAGE
17 -----	7 -----	9 -----	15
18 -----	7 -----	9 -----	15
19 -----	7 -----	9 -----	15
20 -----	7 -----	9 -----	15

McARTHUR TOWNSHIP
VIRGINIA MILITARY SURVEYS
SECTIONS TOWN RANGE
INDEX MAP

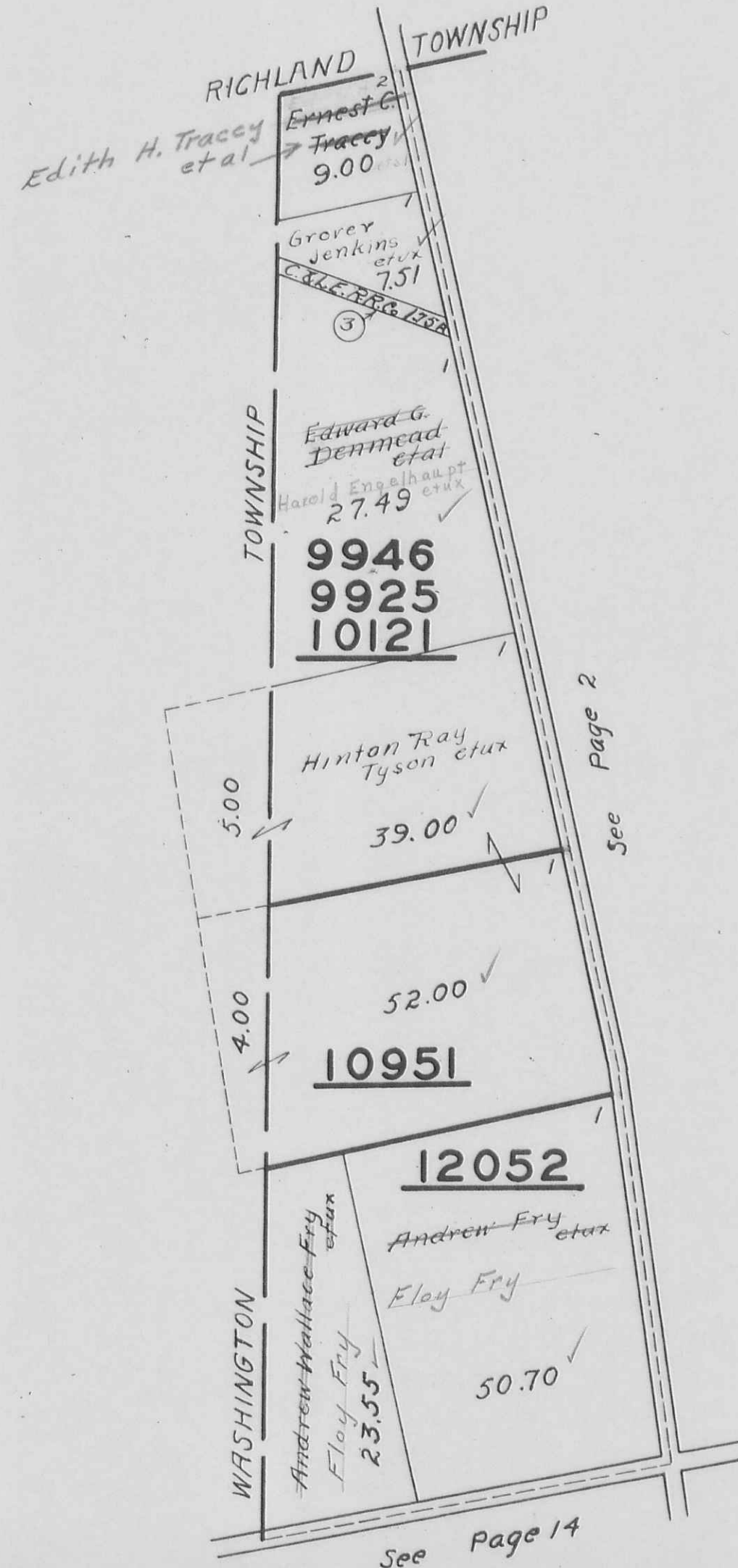
CORRECTED TO
Jan. 1, 1955
Jan. 1, 1956
Jan. 1, 1957
Jan. 1, 1958



McARTHUR TOWNSHIP
VIRGINIA MILITARY SURVEYS

SCALE 10 CHAINS TO THE INCH

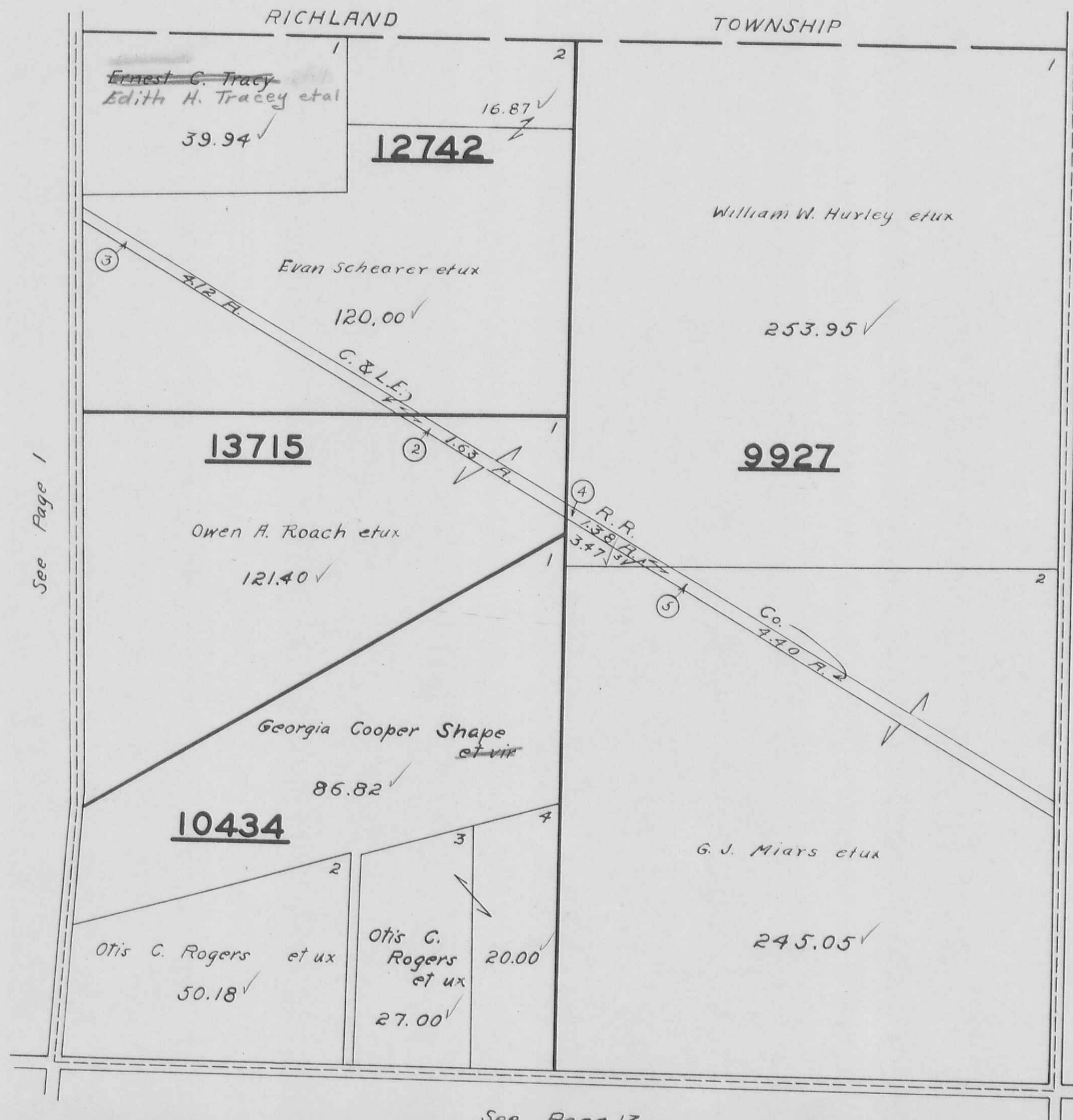
9946
9925
10121
10951
12052



McARTHUR TOWNSHIP
VIRGINIA MILITARY SURVEYS

SCALE 10 CHAINS TO THE INCH

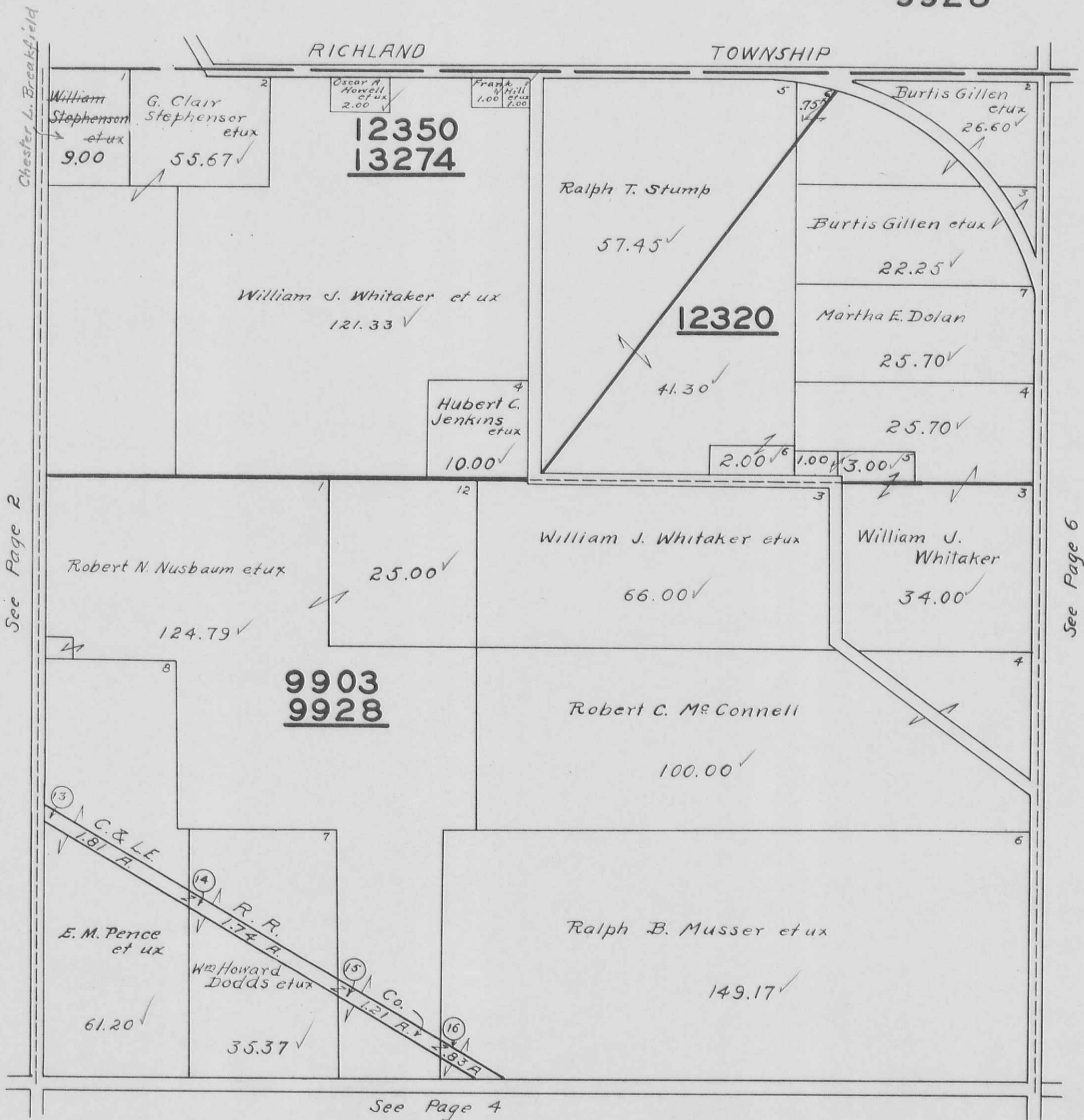
12742
13715
10434
9927

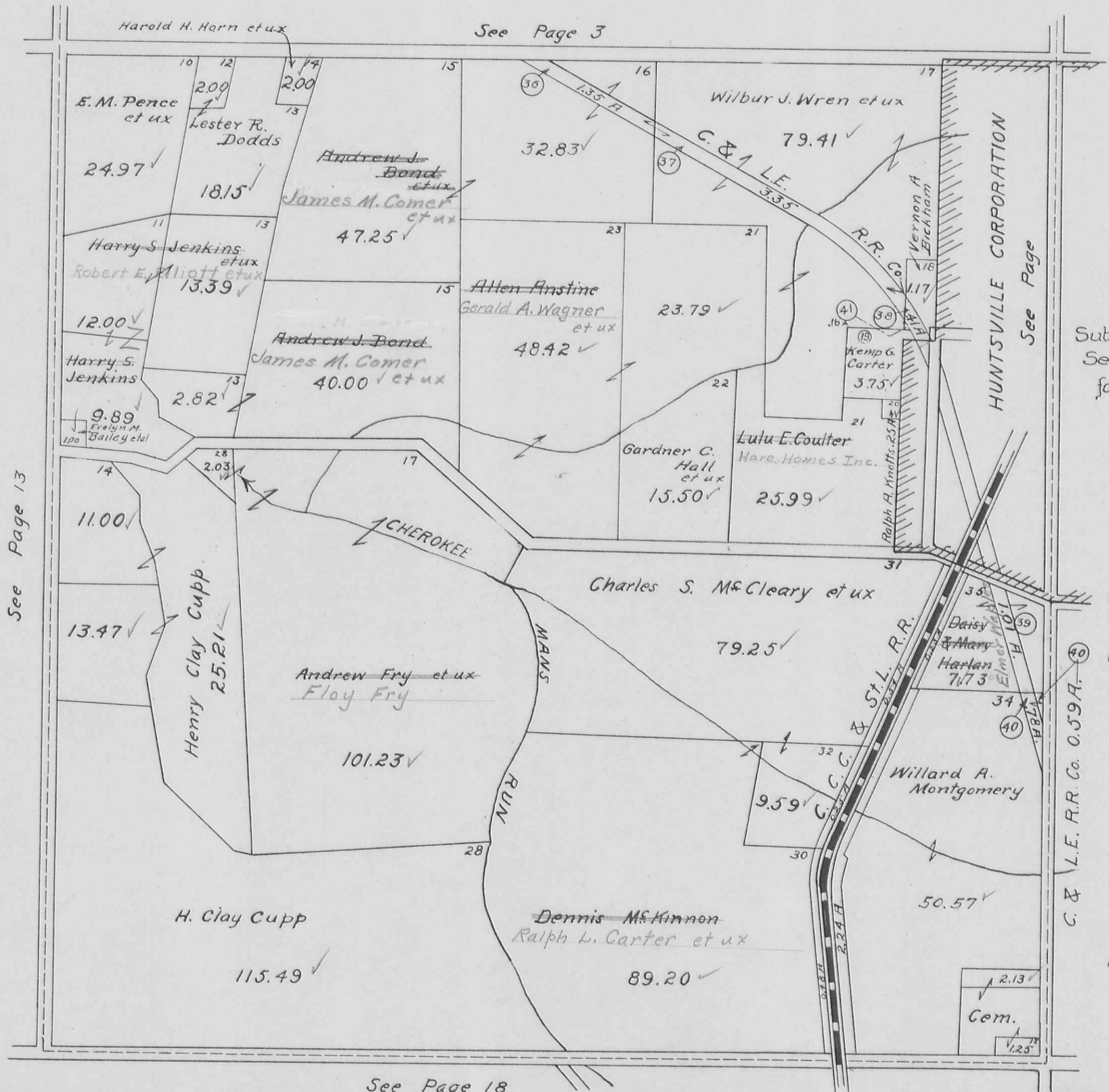


McARTHUR TOWNSHIP
VIRGINIA MILITARY SURVEYS

12350 PAGE 3
13274
12320
9903
9928

SCALE 10 CHAINS TO THE INCH





Harold H. Horn et ux

See Page 3

E. M. Pence et ux
24.97

Lester R. Dodds
18.15

Andrew J. Bond et ux
James M. Comer et ux
47.25

32.83

Wilbur J. Wren et ux
79.41

Harry S. Jenkins et ux
Robert E. Elliott et ux
13.39

Allen Anstine
Gerald A. Wagner et ux
23.79

Harry S. Jenkins
12.00

Andrew J. Bond
James M. Comer et ux
40.00

48.42

9.89
Evelyn M. Bailey et ux

2.82

Gardner C. Hall et ux
15.50

Lulu E. Coulter
Hare Homes Inc.
25.99

11.00

Henry Clay Cupp
25.21

Andrew Fry et ux
Floy Fry
101.23

Charles S. McCleary et ux
79.25

13.47

H. Clay Cupp
115.49

Dennis McKinnon
Ralph L. Carter et ux
89.20

9.59

Willard A. Montgomery
50.57

2.13
Cem.
1.25

HUNTSVILLE CORPORATION
See Page

Subs. 37-38-41
See Page 4-A
for Details

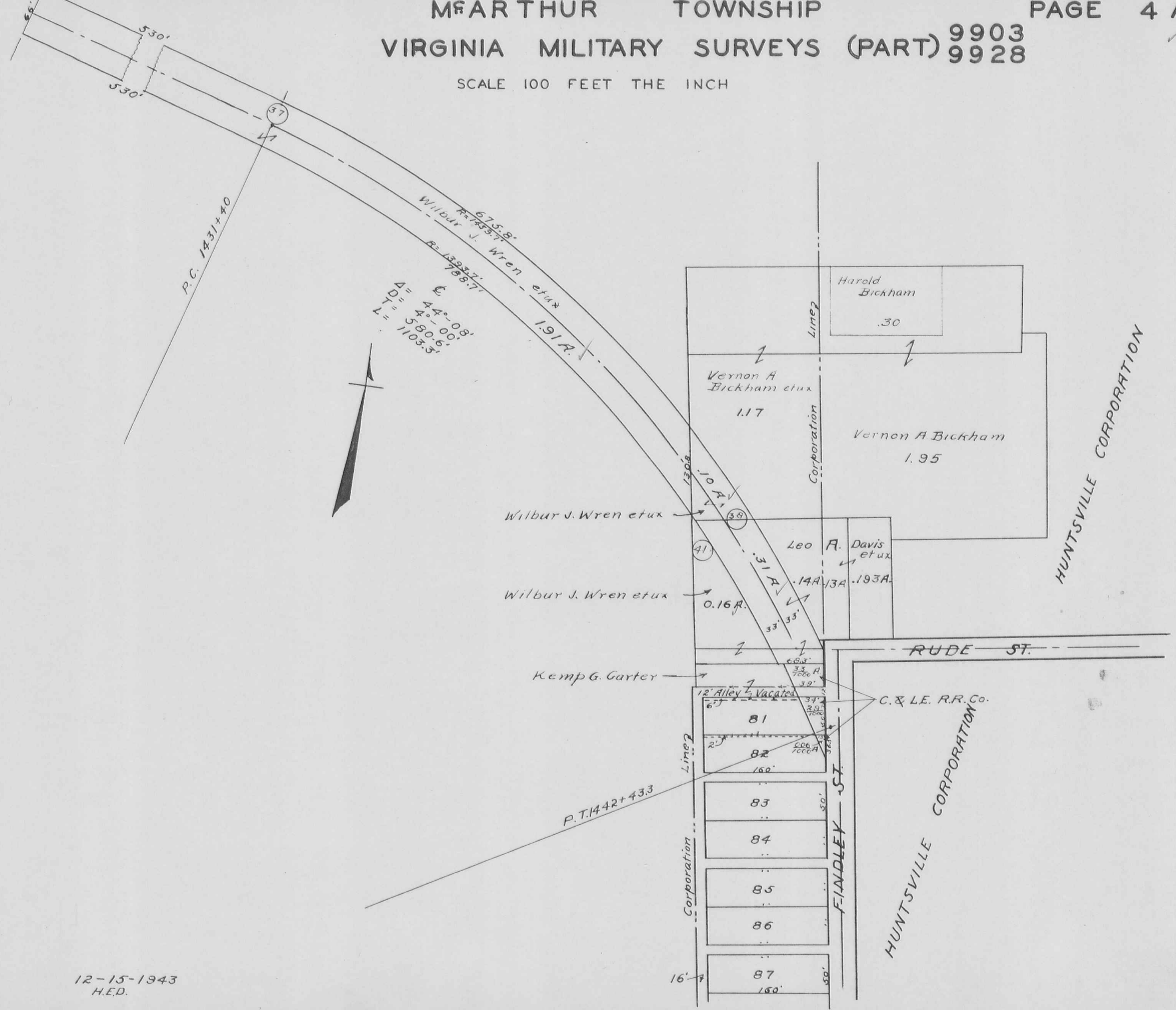
See Page 5

C. & L.E. R.R. Co. 0.59A. 40

Handwritten notes: 2 2 9 9, 4 2 1 1, 3 2 9 8

See Page 18

SCALE 100 FEET THE INCH

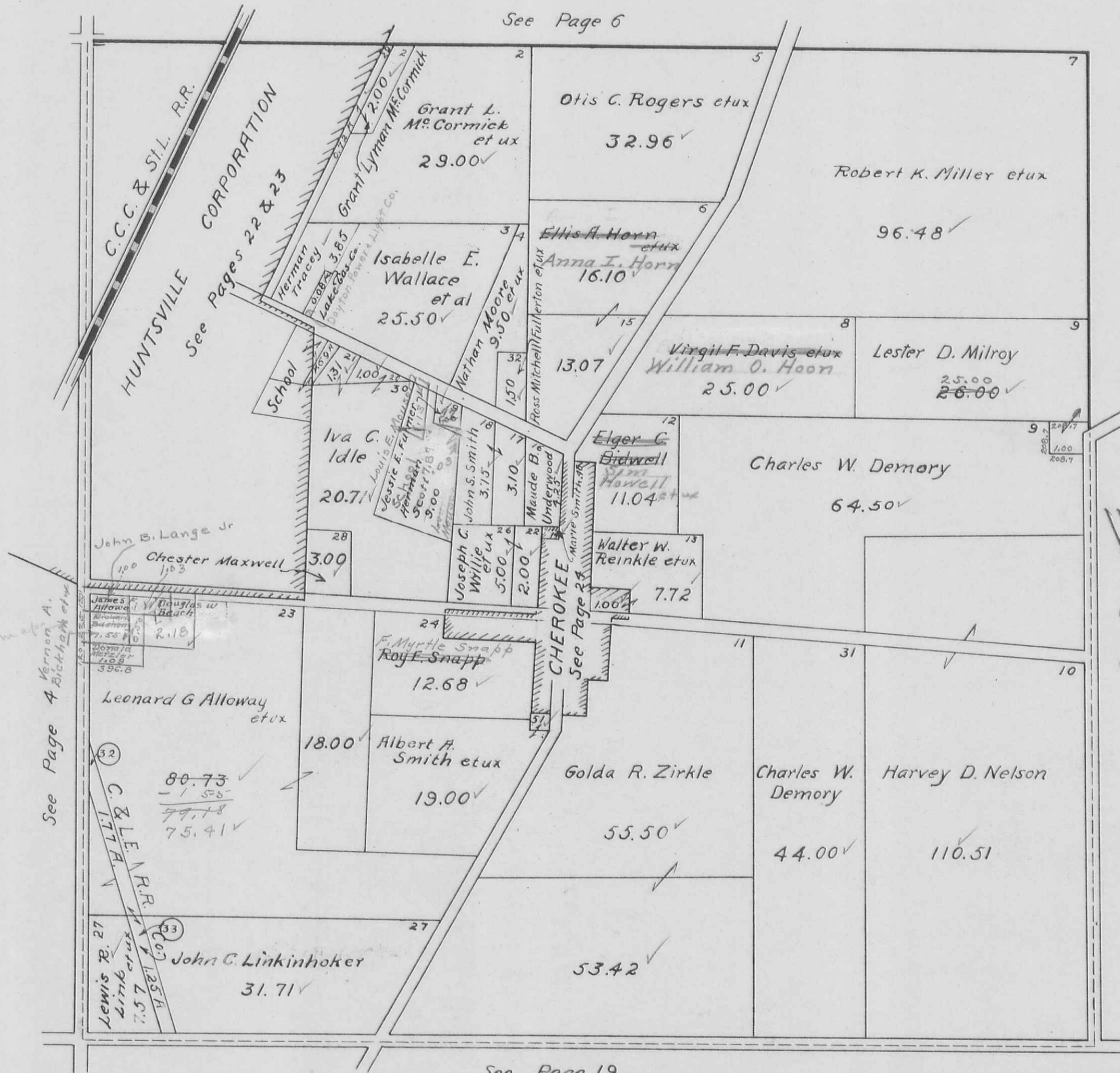


$\Delta = 44^{\circ}-08'$
 $D = 4^{\circ}-00'$
 $T = 580.6'$
 $L = 1103.3'$



VIRGINIA MILITARY SURVEY 9904

SCALE 10 CHAINS TO THE INCH



See Page 6

C.C.C. & S.L. R.R.
HUNTSVILLE CORPORATION
See Pages 22 & 23

See Page 4
Vernon A. Bickham et ux
See Turp map

CHEROKEE
See Page 24

See Page 10

See Page 19

McARTHUR TOWNSHIP
VIRGINIA MILITARY SURVEY 9929

SCALE 10 CHAINS TO THE INCH



See Page 3

See Page 7

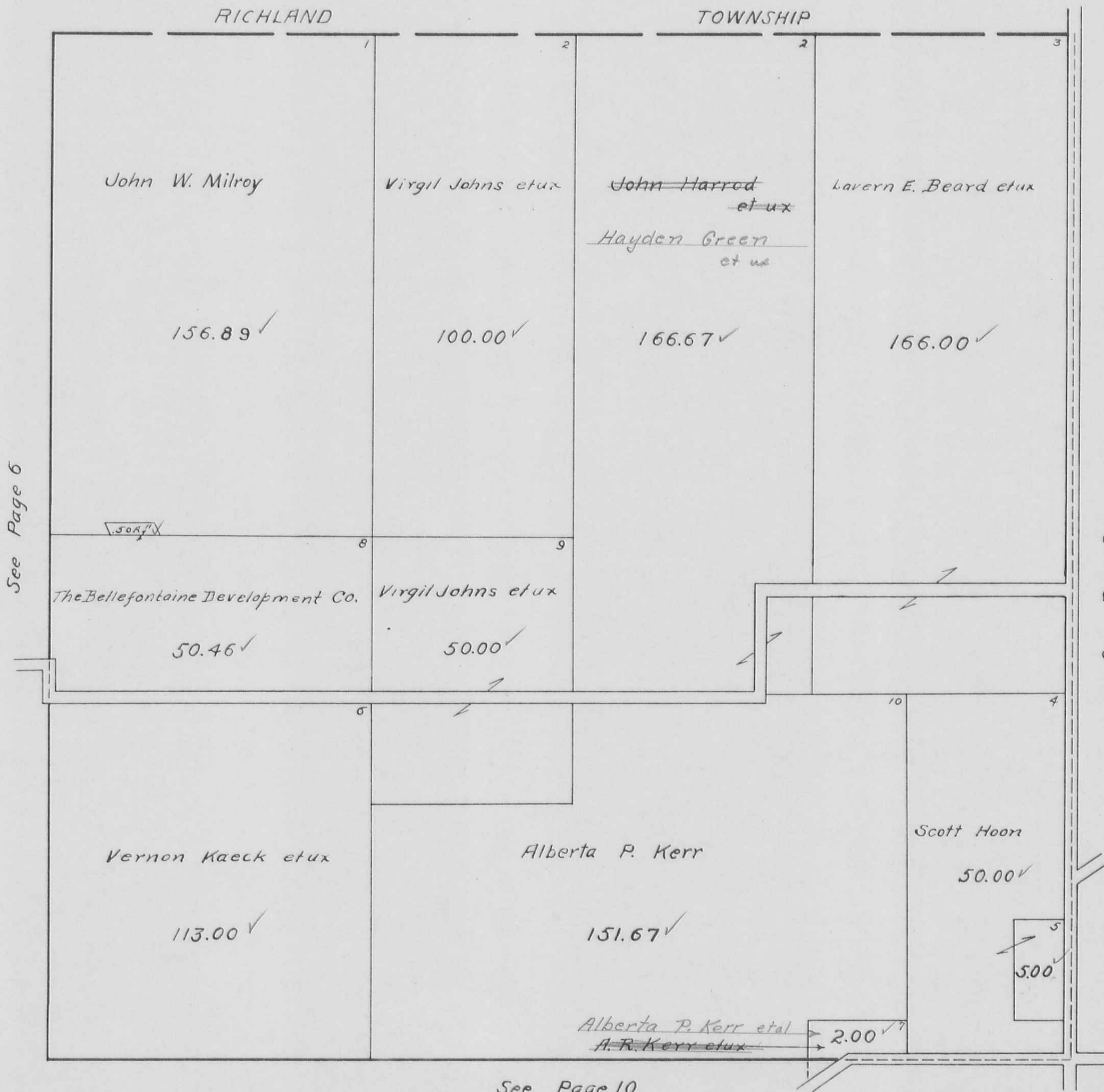
See Page 5

VIRGINIA MILITARY SURVEY 9930

SCALE 10 CHAINS TO THE INCH

RICHLAND

TOWNSHIP



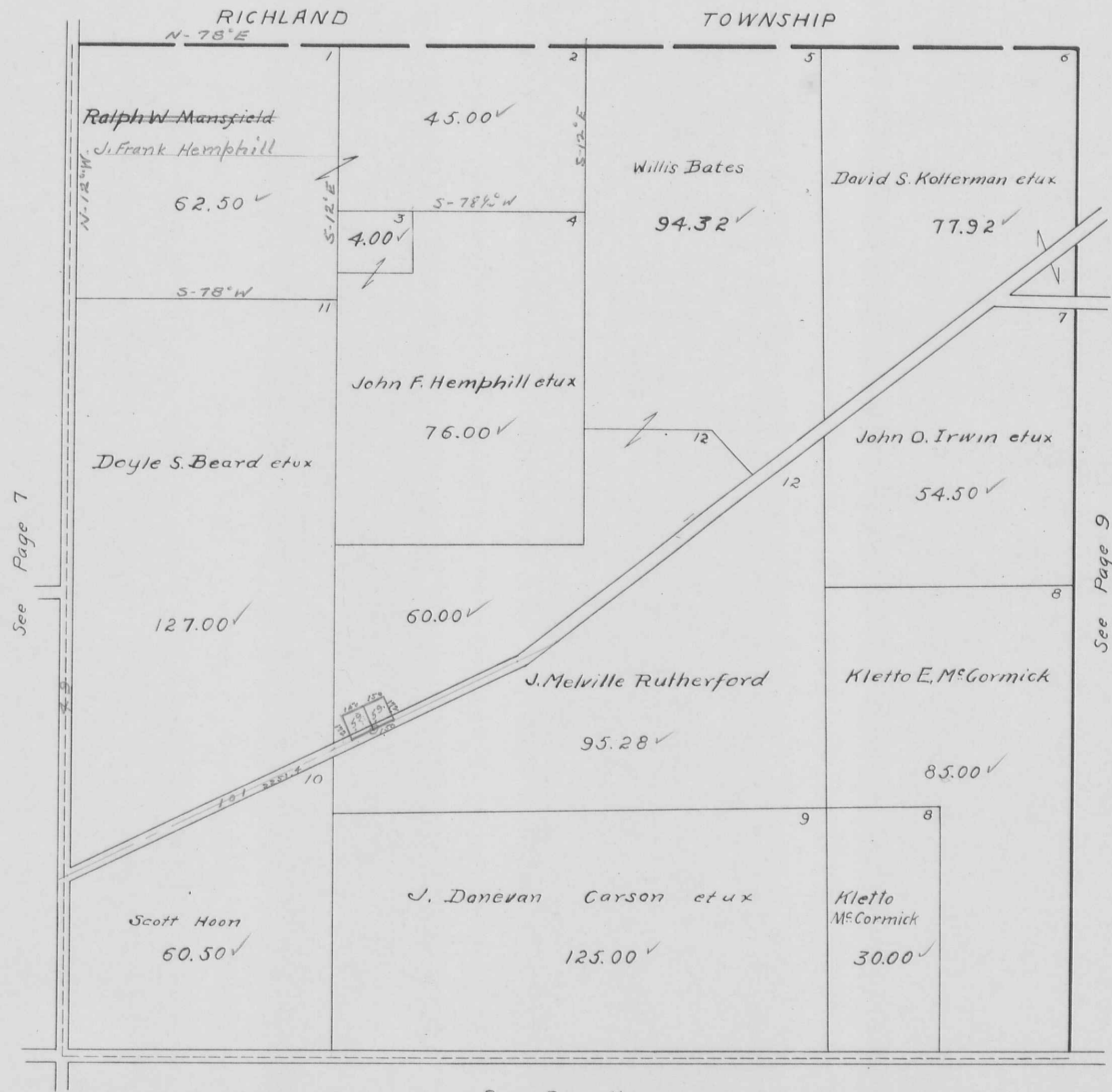
See Page 6

See Page 8

See Page 10

McARTHUR TOWNSHIP
 VIRGINIA MILITARY SURVEY 9931

SCALE 10 CHAINS TO THE INCH

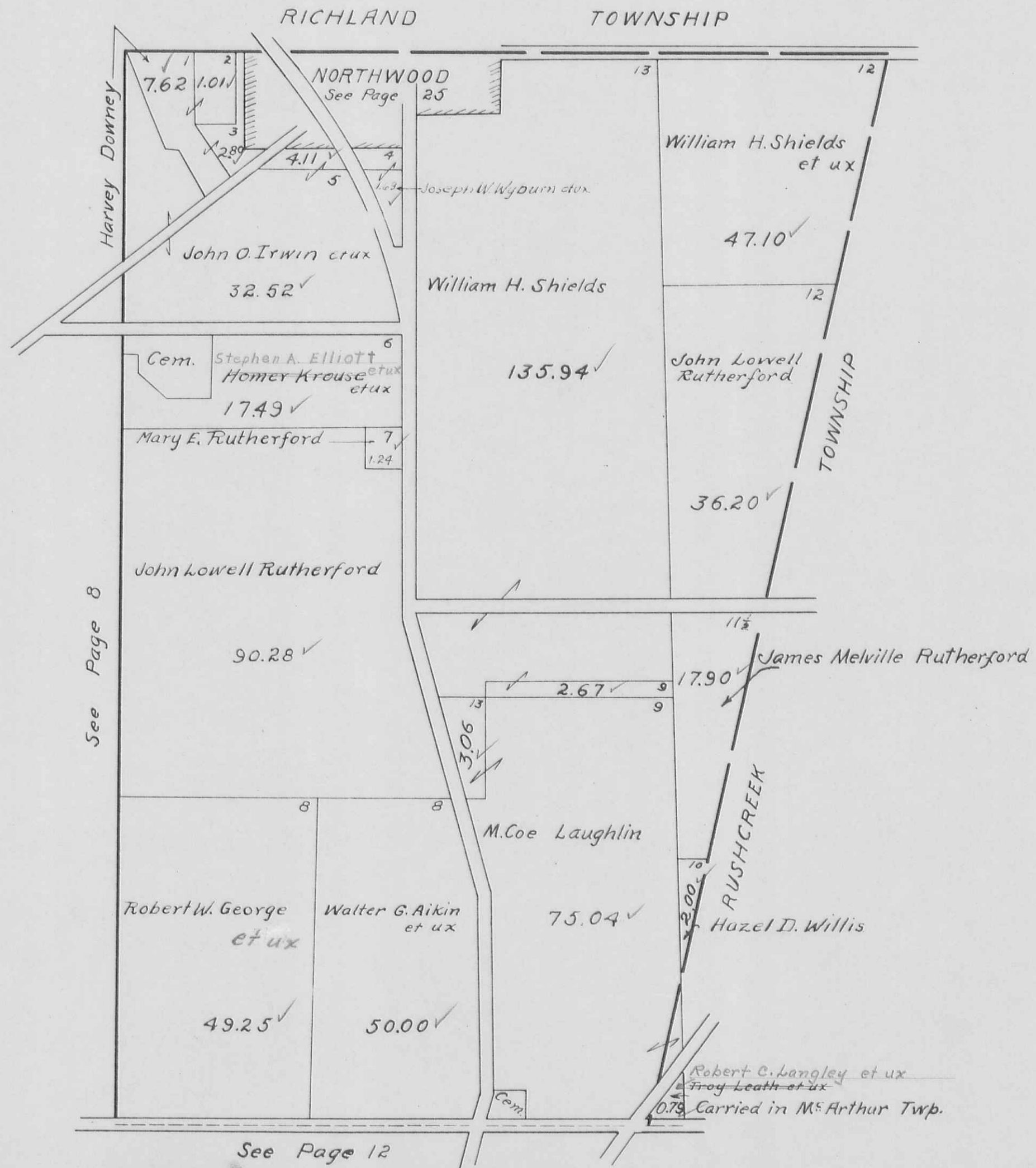


H.E.D.

See Page 11

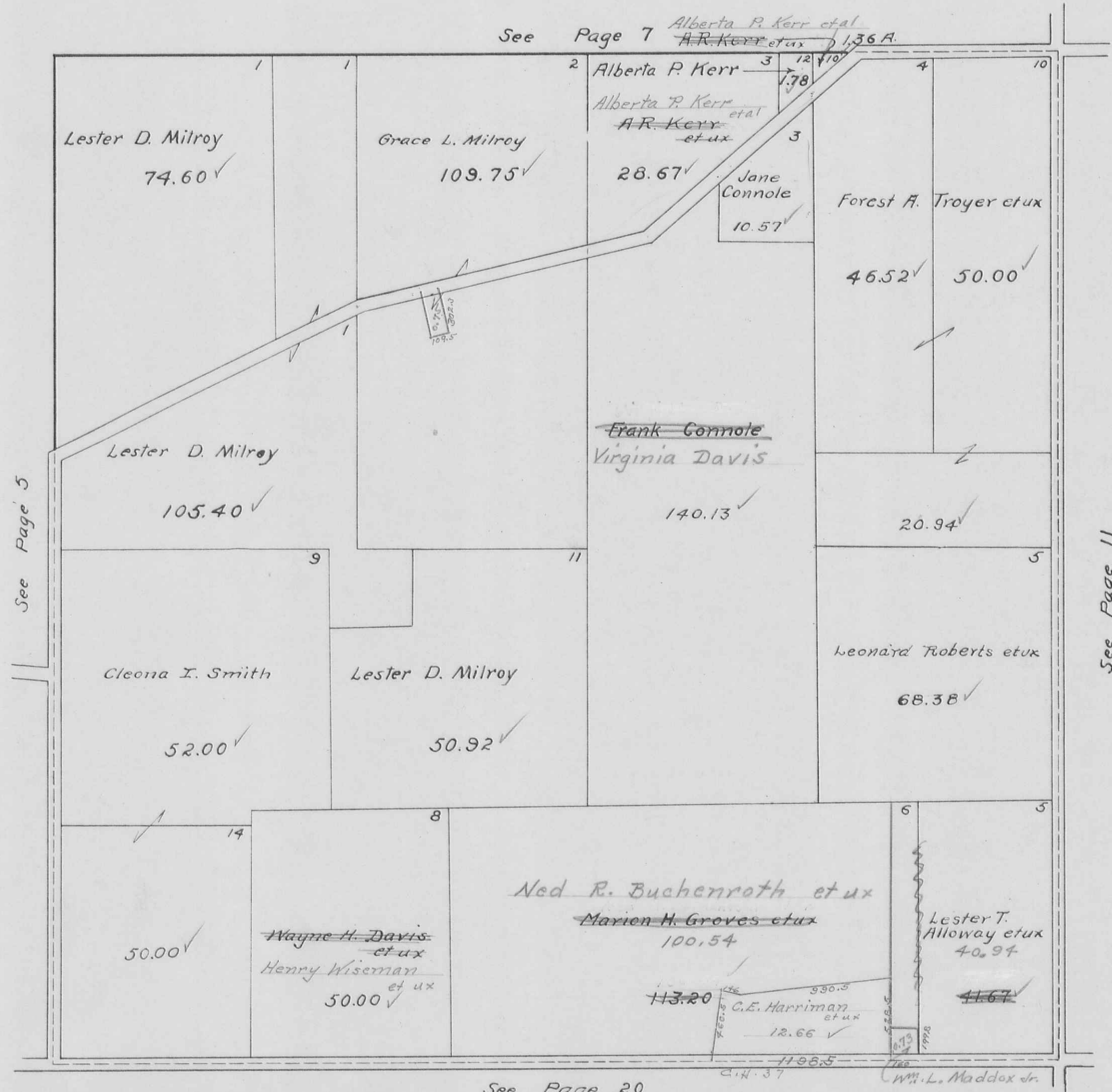
McARTHUR TOWNSHIP
VIRGINIA MILITARY SURVEY 9932

SCALE 10 CHAINS TO THE INCH



McARTHUR TOWNSHIP
 VIRGINIA MILITARY SURVEY 9905

SCALE 10 CHAINS TO THE INCH

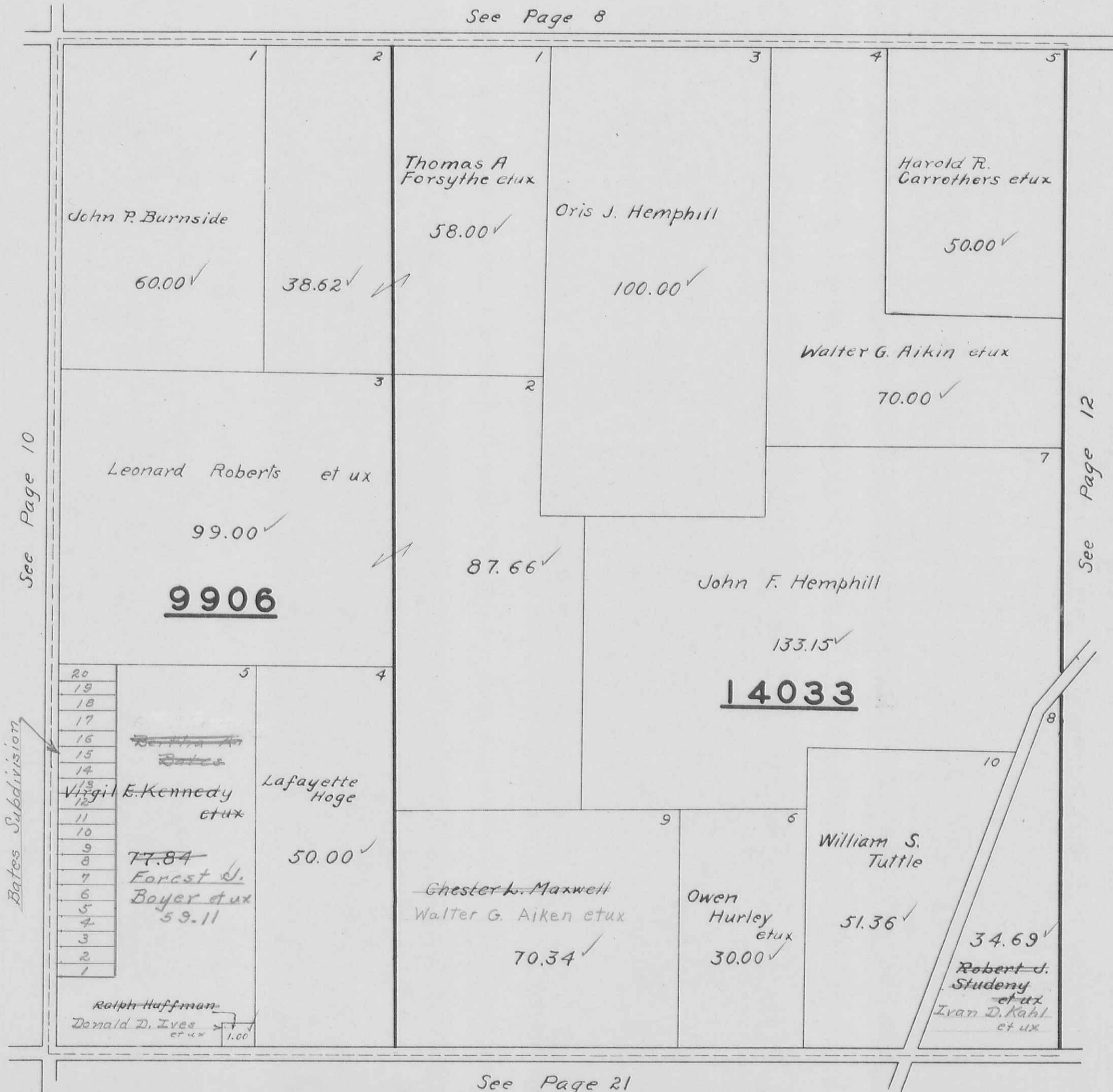


H.E.D.

McARTHUR TOWNSHIP
 VIRGINIA MILITARY SURVEYS 9906
 14033

SCALE 10 CHAINS TO THE INCH

See Page 8



See Page 10

See Page 12

See Page 21

77.84
 - 18.73
 59.11

Bates Subdivision

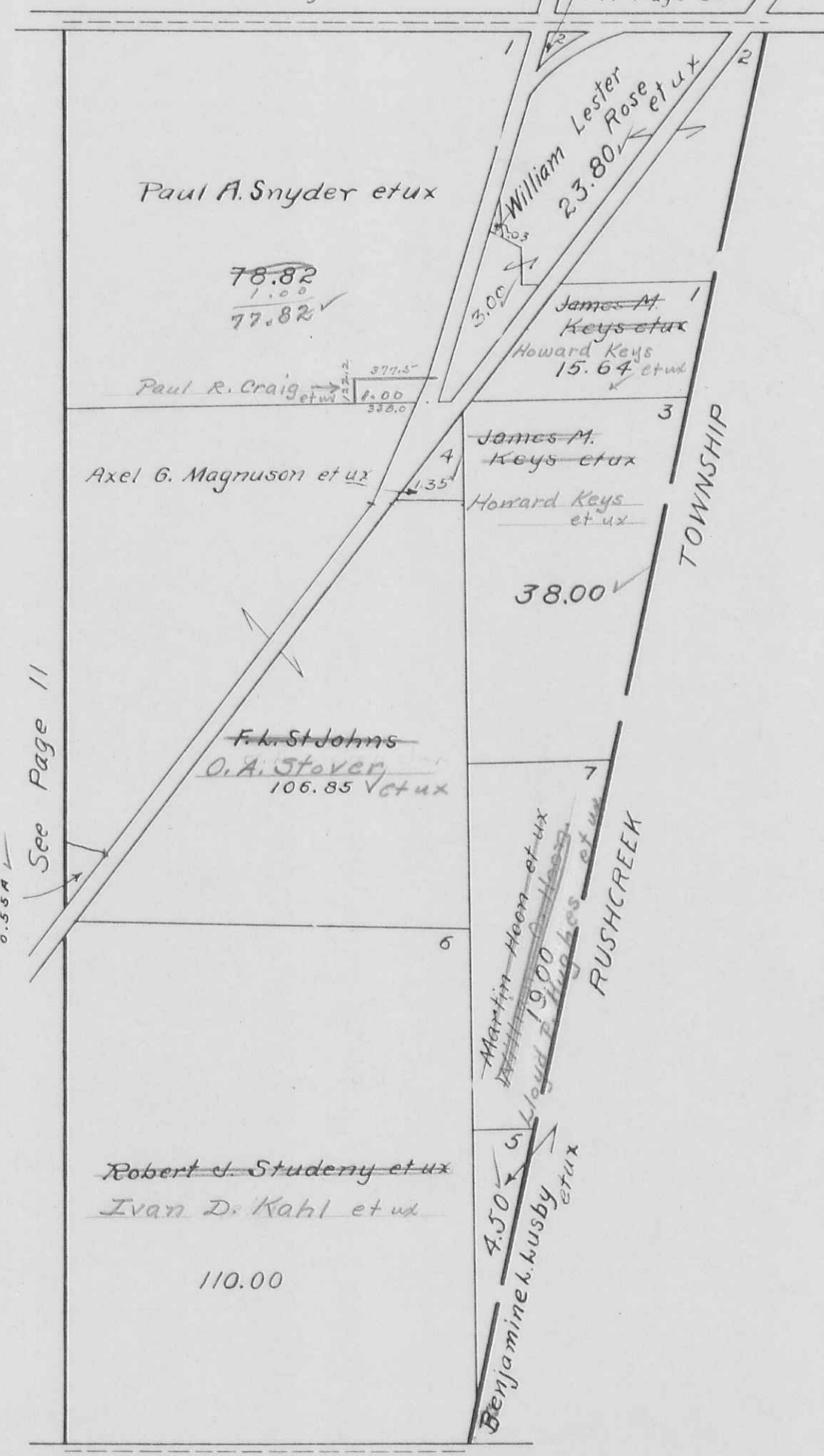
- 20
- 19
- 18
- 17
- 16
- 15
- 14
- 13
- 12
- 11
- 10
- 9
- 8
- 7
- 6
- 5
- 4
- 3
- 2
- 1

SCALE 10 CHAINS TO THE INCH

Note: Cecil M. Connor 0.74 A. ✓
To, State of Ohio, By Perpetual
Easement dated November-13-1941

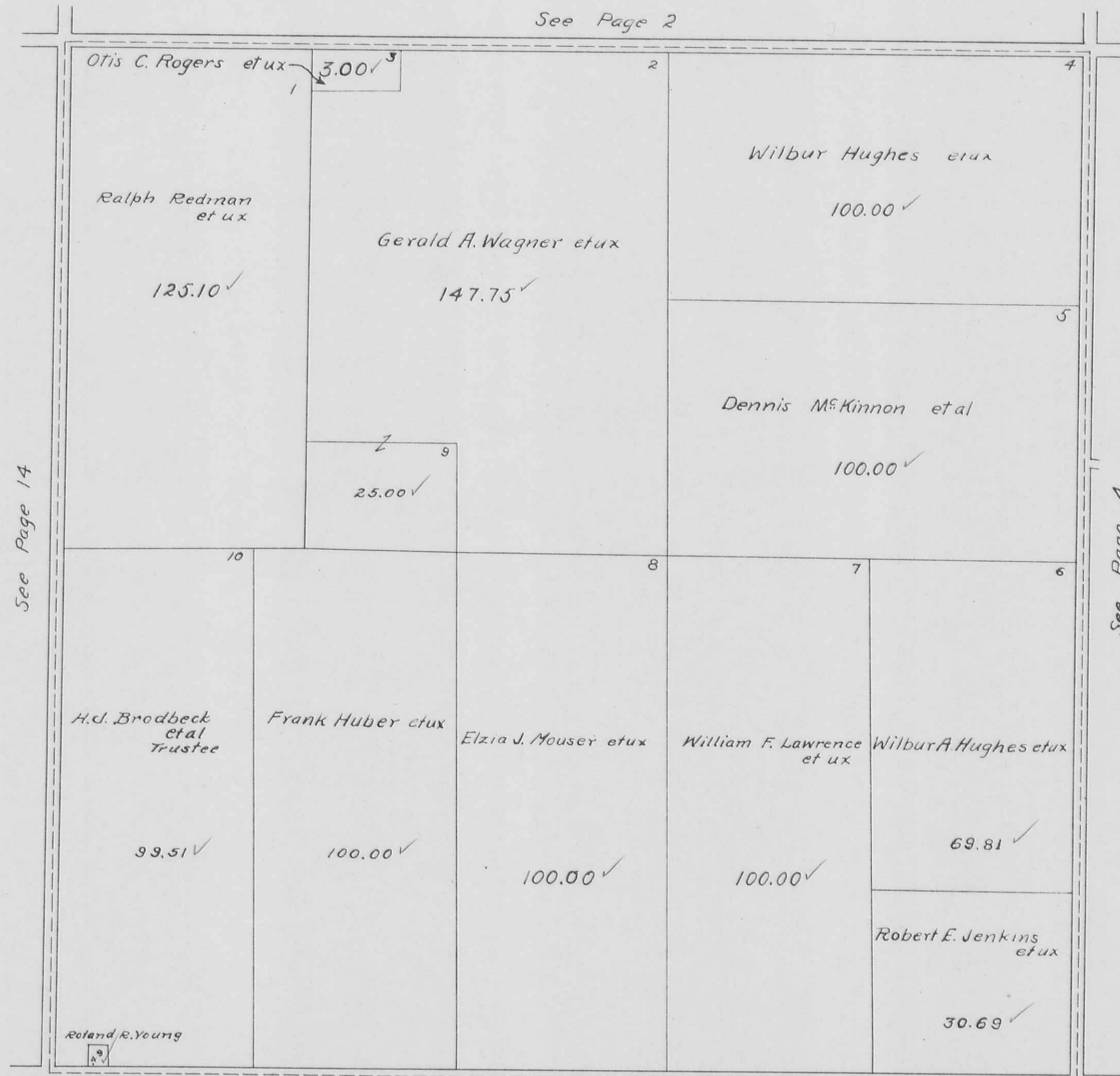
Recorders book
171 Page 86

See Page 9



See Page 21

See Page 2



See Page 14

See Page 4

See Page 17

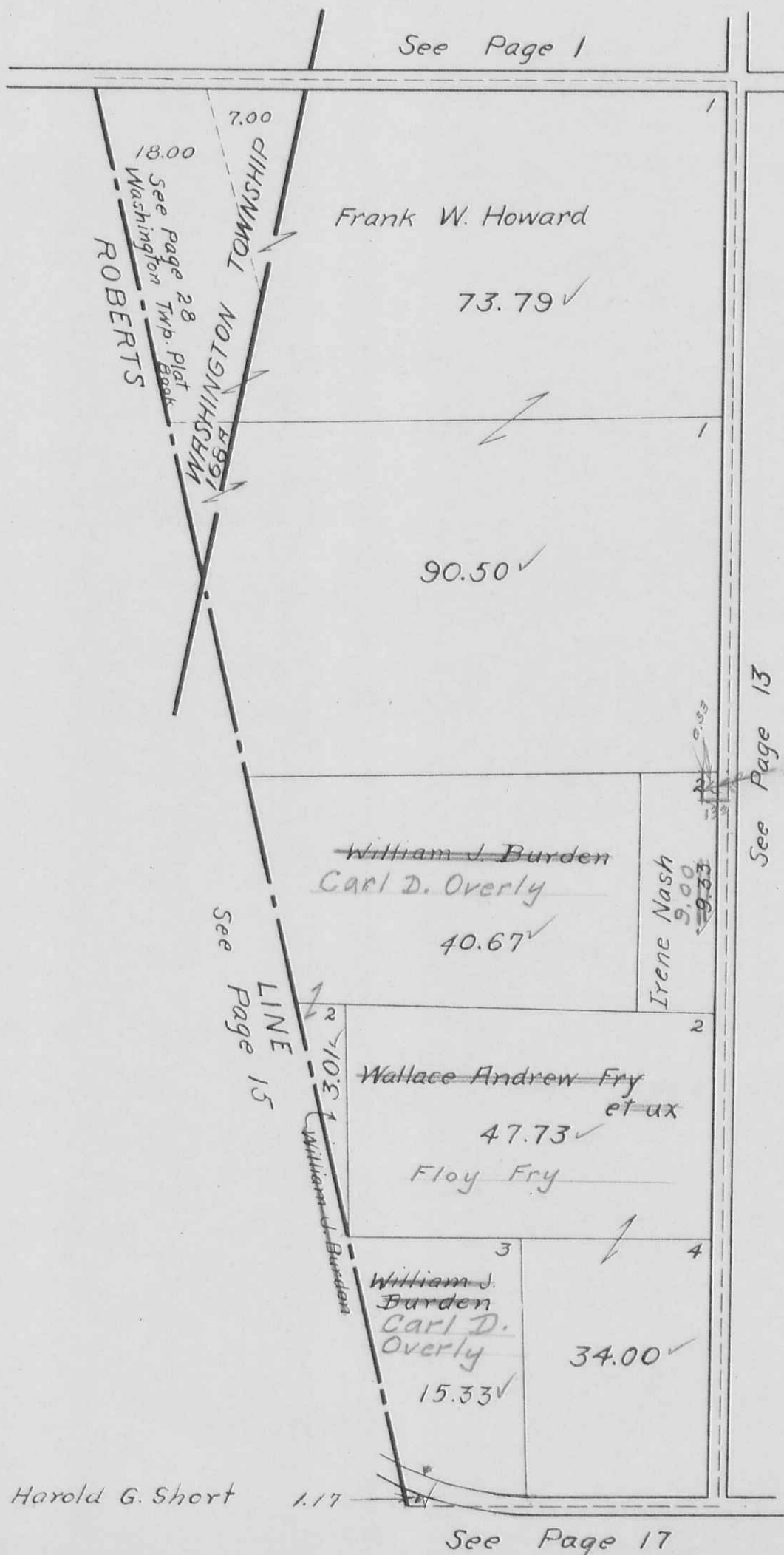
VIRGINIA

MILITARY

SURVEY

12168

SCALE 10 CHAINS TO THE INCH



Richard Steinmetz 0.33 AC.

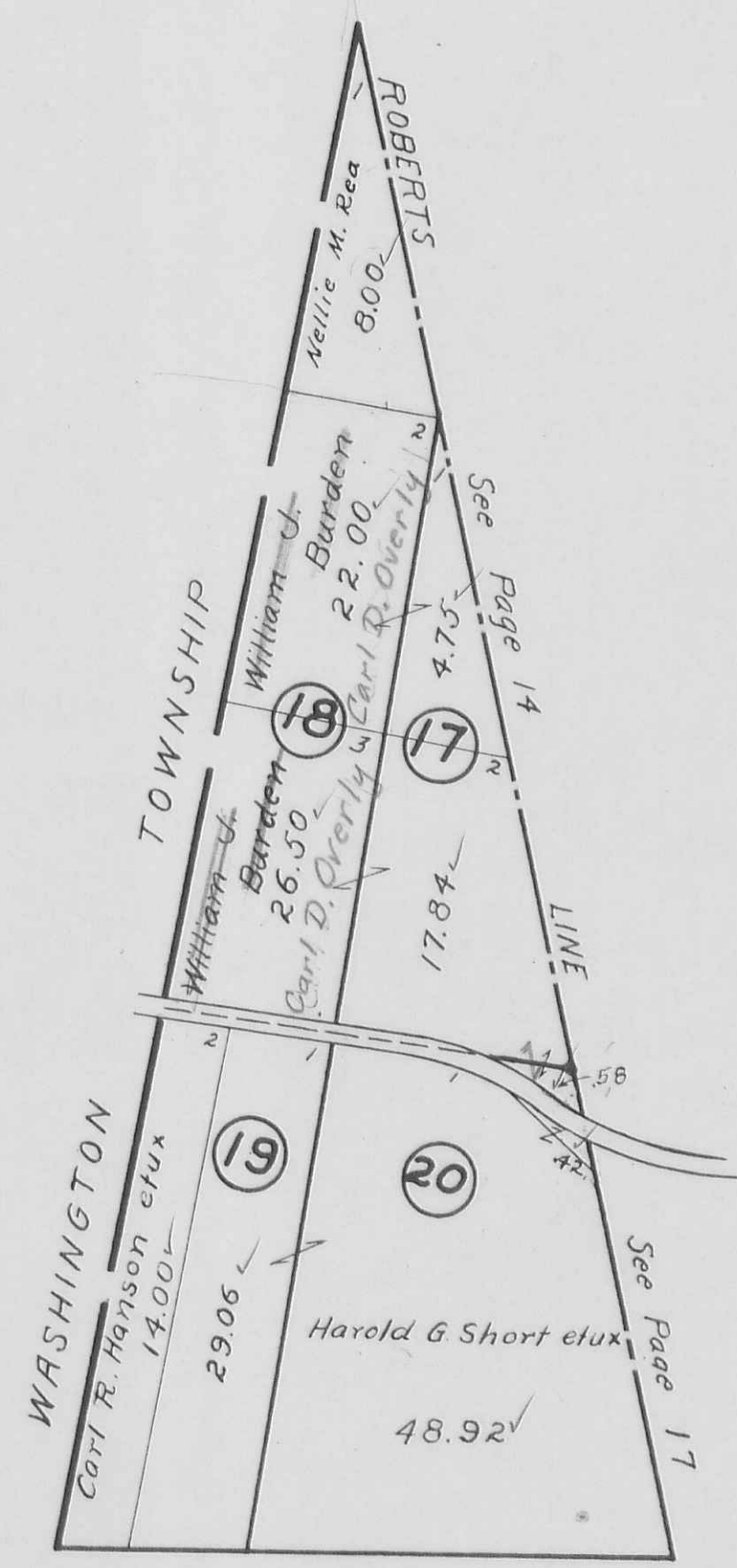
See Page 13

See Page 15

See Page 17

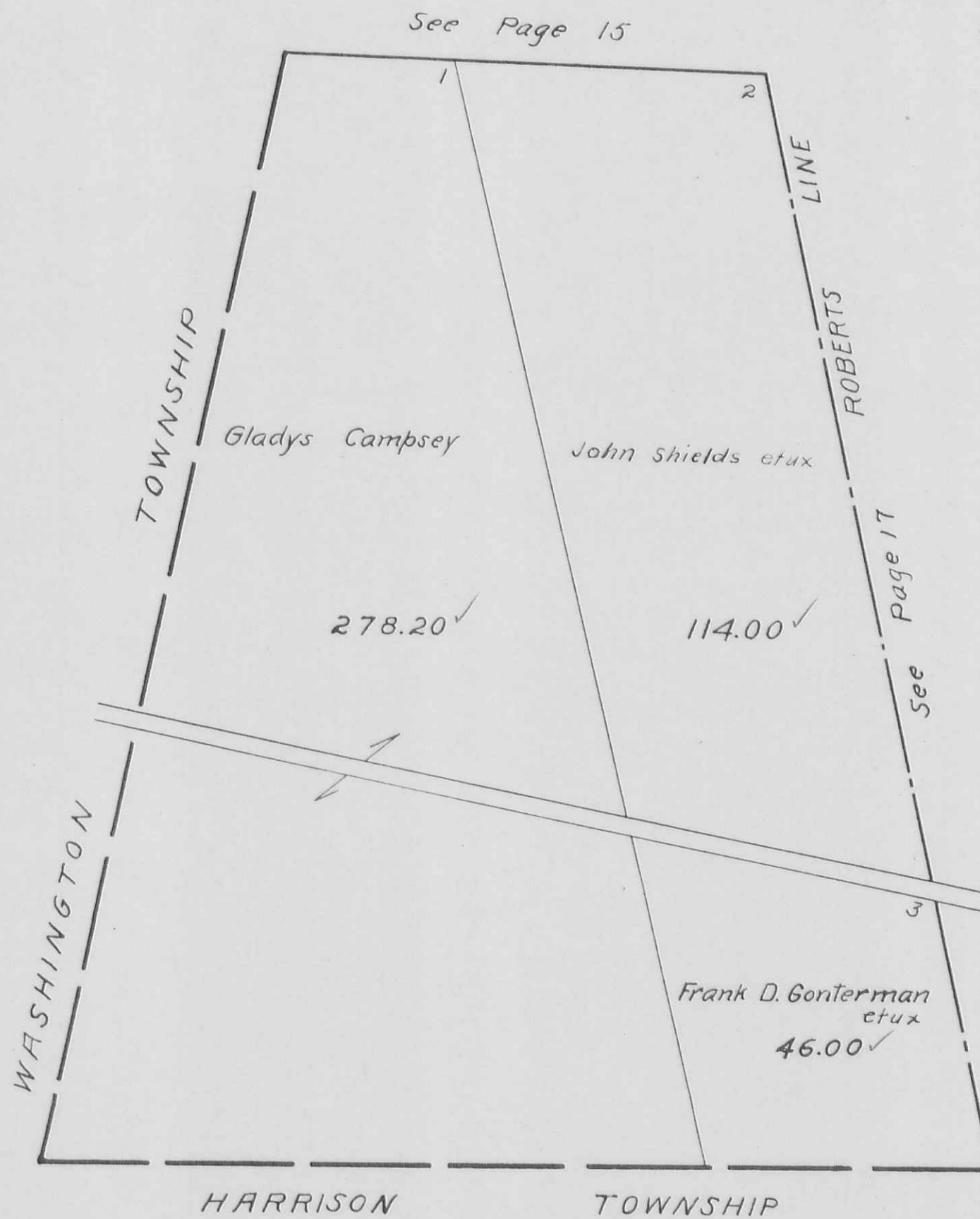
McARTHUR TOWNSHIP
SECTION 17 18
19 20 TOWN 7 RANGE 9

SCALE 10 CHAINS TO THE INCH



McPHERSON SECTION TOWN 7 RANGE 9

SCALE 10 CHAINS TO THE INCH



McARTHUR TOWNSHIP
VIRGINIA MILITARY SURVEYS

10122
10248
10249

SCALE 10 CHAINS TO THE INCH



H.E.D.

McARTHUR TOWNSHIP
VIRGINIA MILITARY SURVEY 9881

SCALE 10 CHAINS TO THE INCH



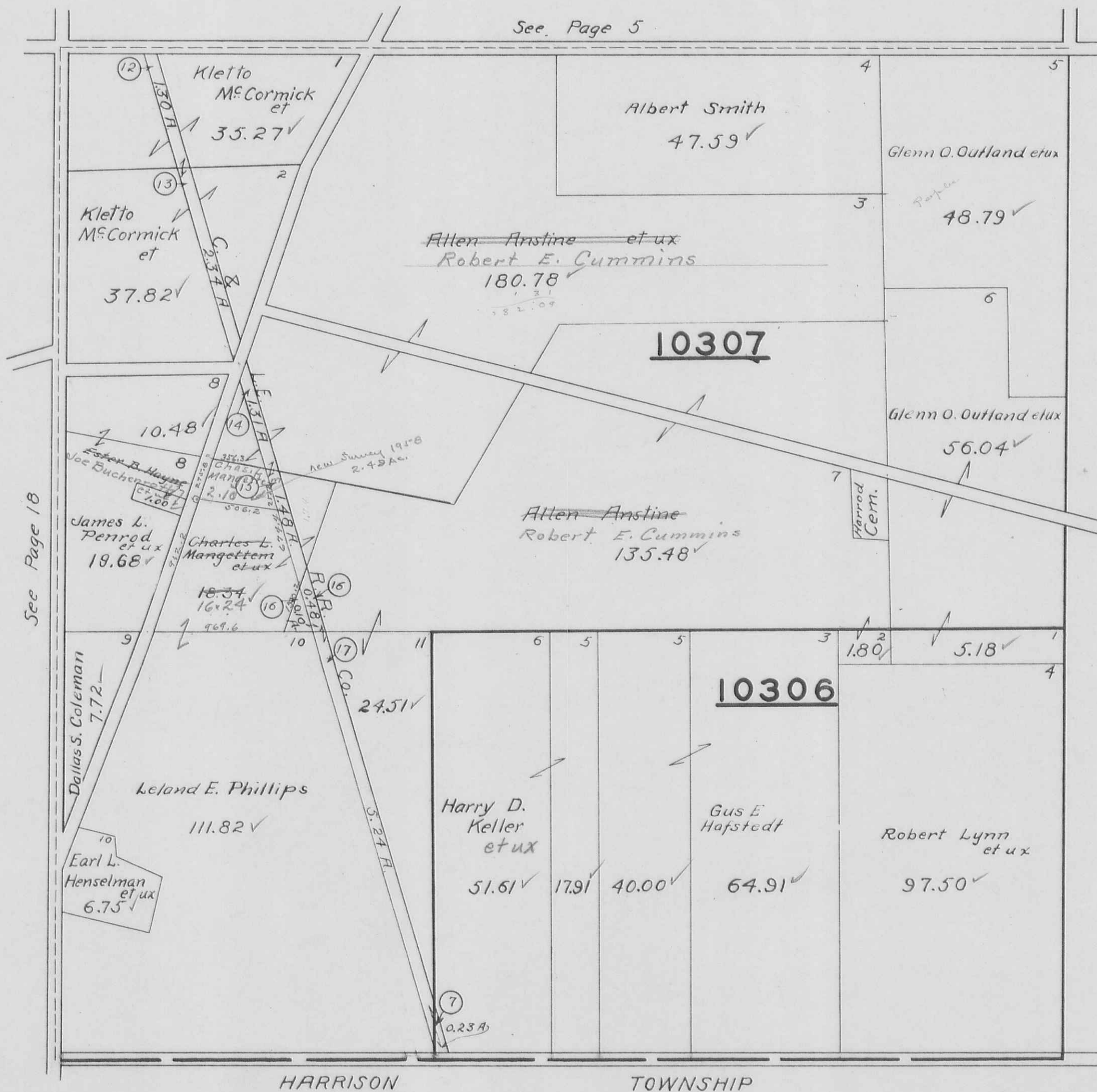
VIRGINIA

MILITARY

SURVEYS

10306
10307

SCALE 10 CHAINS TO THE INCH



See Page 5

See Page 18

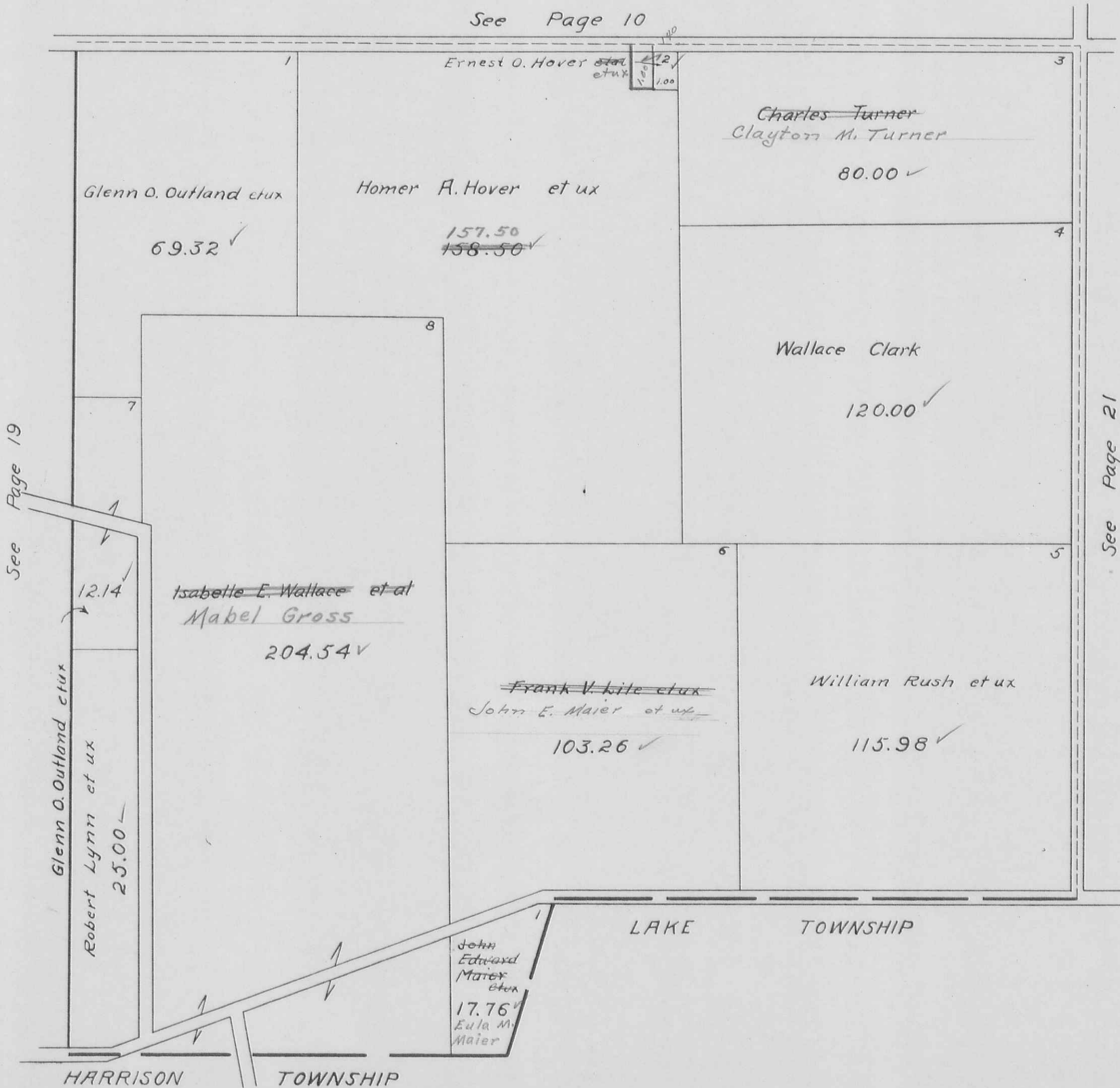
See Page 20

HARRISON

TOWNSHIP

McARTHUR TOWNSHIP
VIRGINIA MILITARY SURVEY 9883

SCALE 10 CHAINS TO THE INCH



VIRGINIA MILITARY SURVEYS 9884 9885

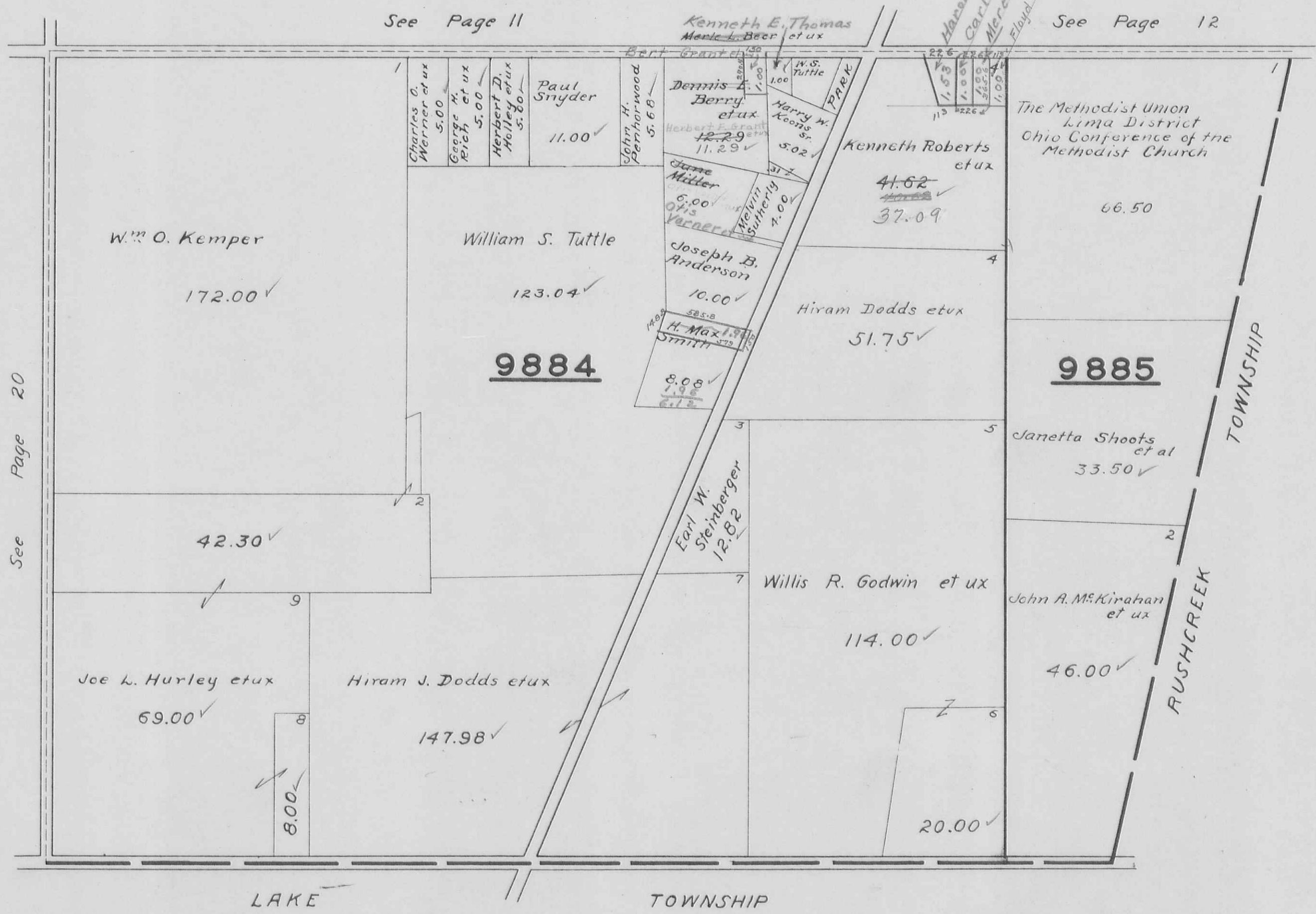
SCALE 10 CHAINS TO THE INCH

10.52
1.1.11
19.09

See Page 11

See Page 12

Harold R. Gardner et ux
Carl E. Oliver et ux
Meredith P. Gardner
Floyd R. M.S. Coffey



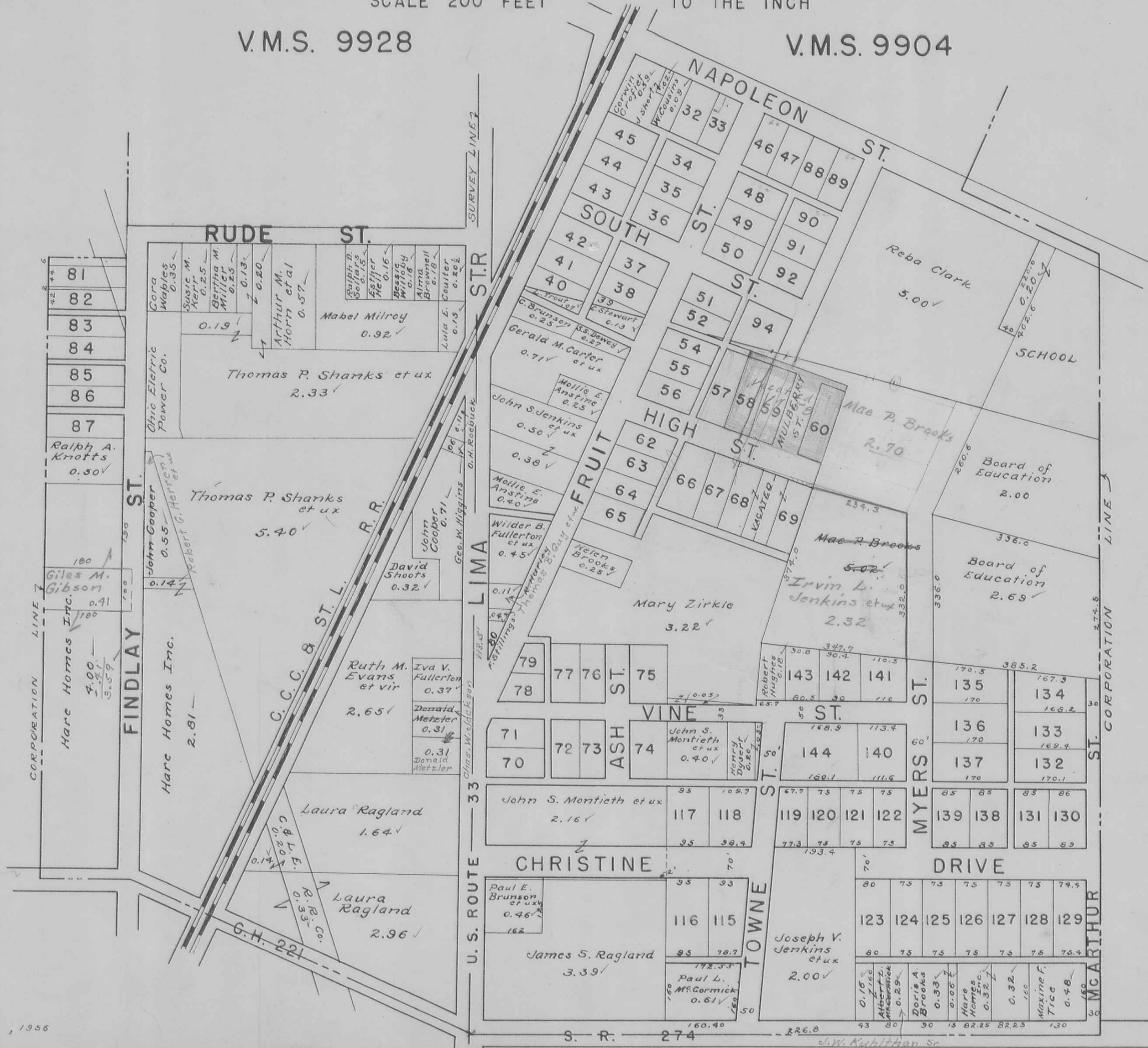
See Page 20

HUNTSVILLE CORPORATION (SOUTH PART)

SCALE 200 FEET TO THE INCH

V.M.S. 9928

V.M.S. 9904



JULY 30, 1956

S. R. 274

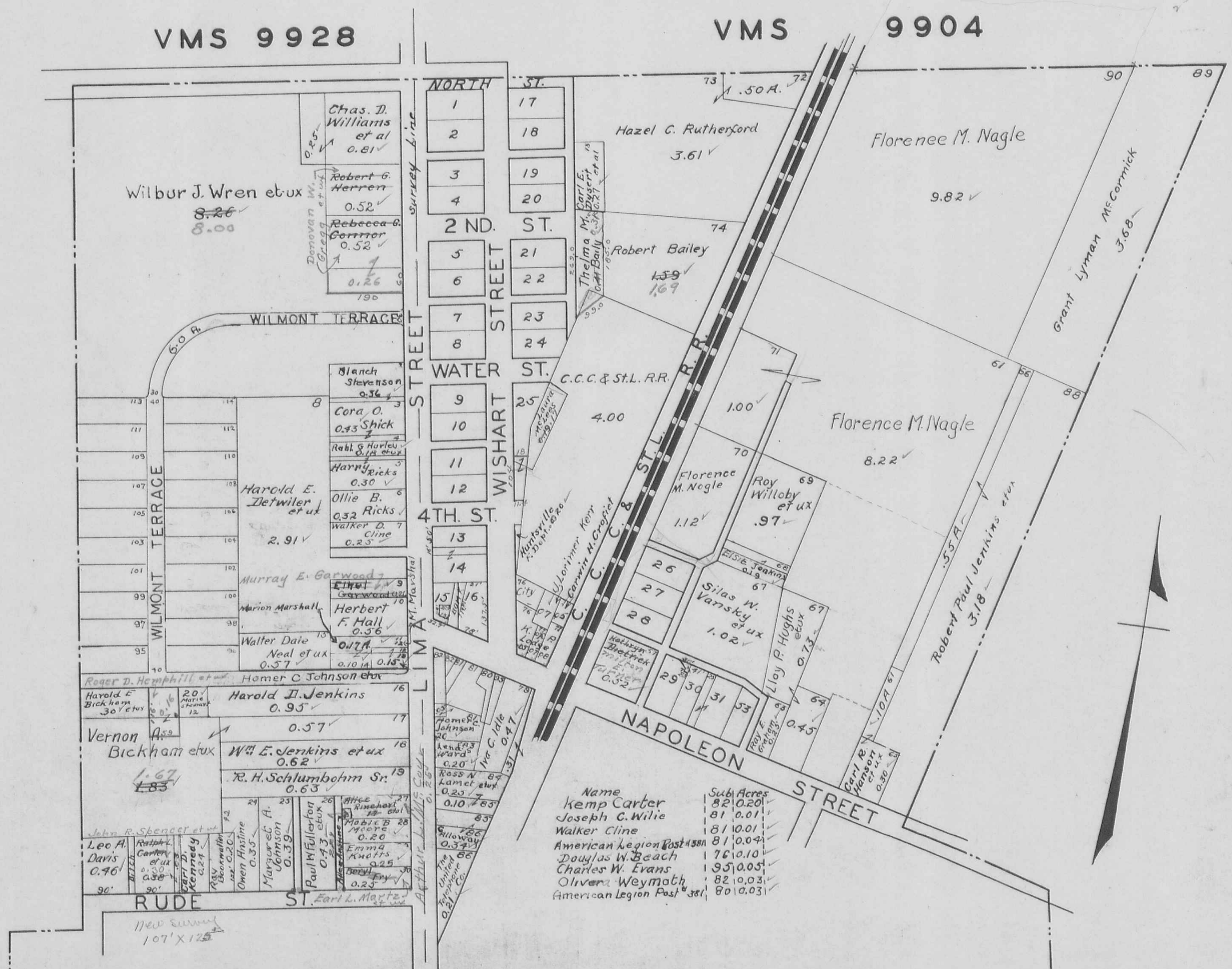
HUNTSVILLE CORPORATION NORTH PART

SCALE 200 FEET TO THE INCH

VMS 9928

VMS

9904

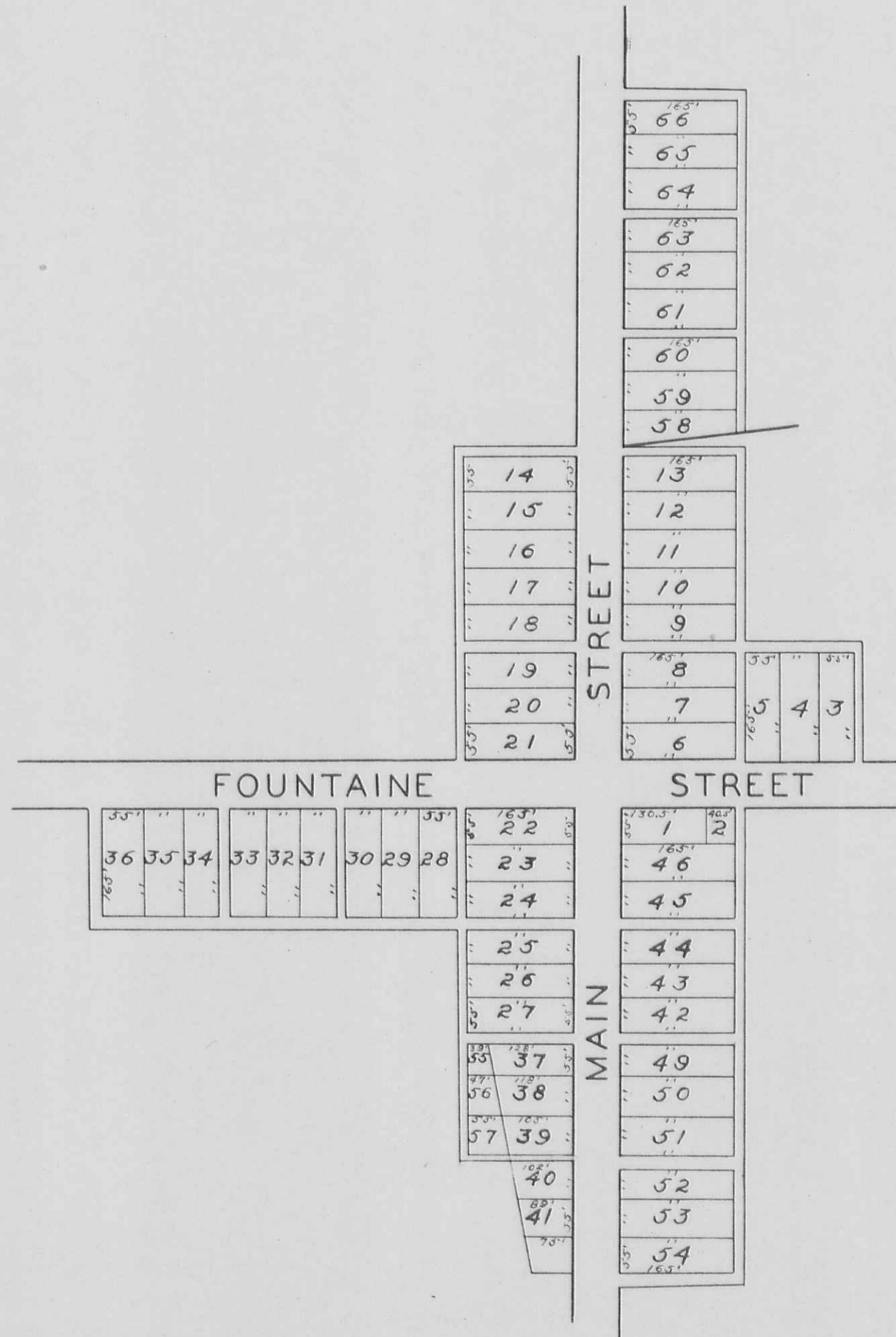


H.E.D.

corrected 11-48 G.H.C.

CHEROKEE

SCALE 200 FEET TO THE INCH



NORTHWOOD

SCALE 200 FEET TO THE INCH.

