

ZANE TOWNSHIP.

Scale, chains per inch.

Plat of Military Survey No.

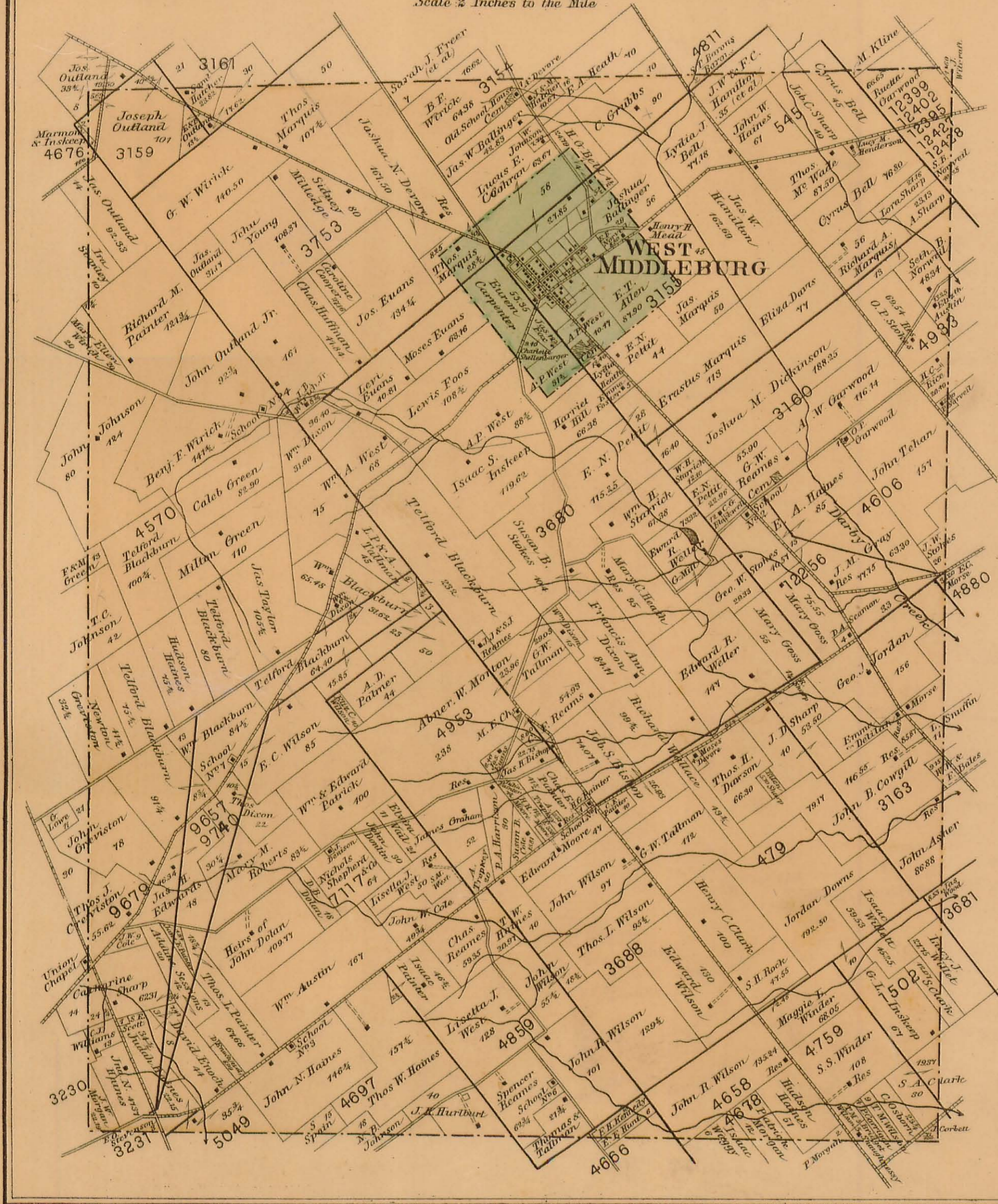
Original Quantity

Acres. Original Proprietor

<i>Index</i>				
<i>Survey</i>	<i>PAGE</i>		<i>Survey</i>	<i>PAGE</i>
477	17		4697	15
545	9		4759	19
1502	19		4859	16
3154	3		4953	11
3155	8		4953	14
3159	1		5049	15
3160	10		7117	13
3161	1		{9657	12
3163	18		{9740	
3230	11		9679	12
3231	11		12256	10
N ^o 3680	6		{12399	9
S ^o 3680	7		{12402	
3688	16		{12395	
3753	2		{12427	
			{12428	
N ^o 4570	4		4830	18
S ^o 4570	5		4811	9
4606	10		3681	19
{4658	19		4666	19
{4678				
4676	1			

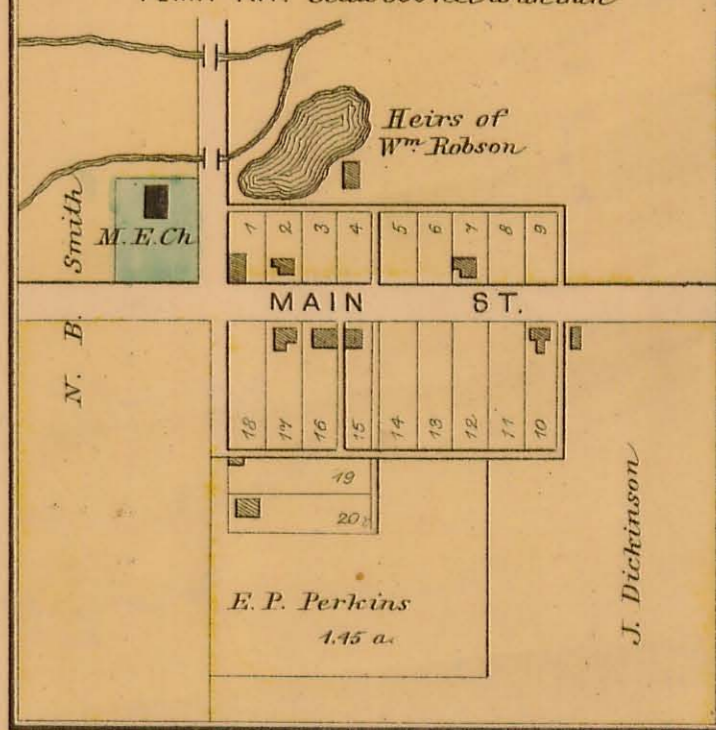
ZANE

Scale 2 Inches to the Mile



NORTH GREENFIELD

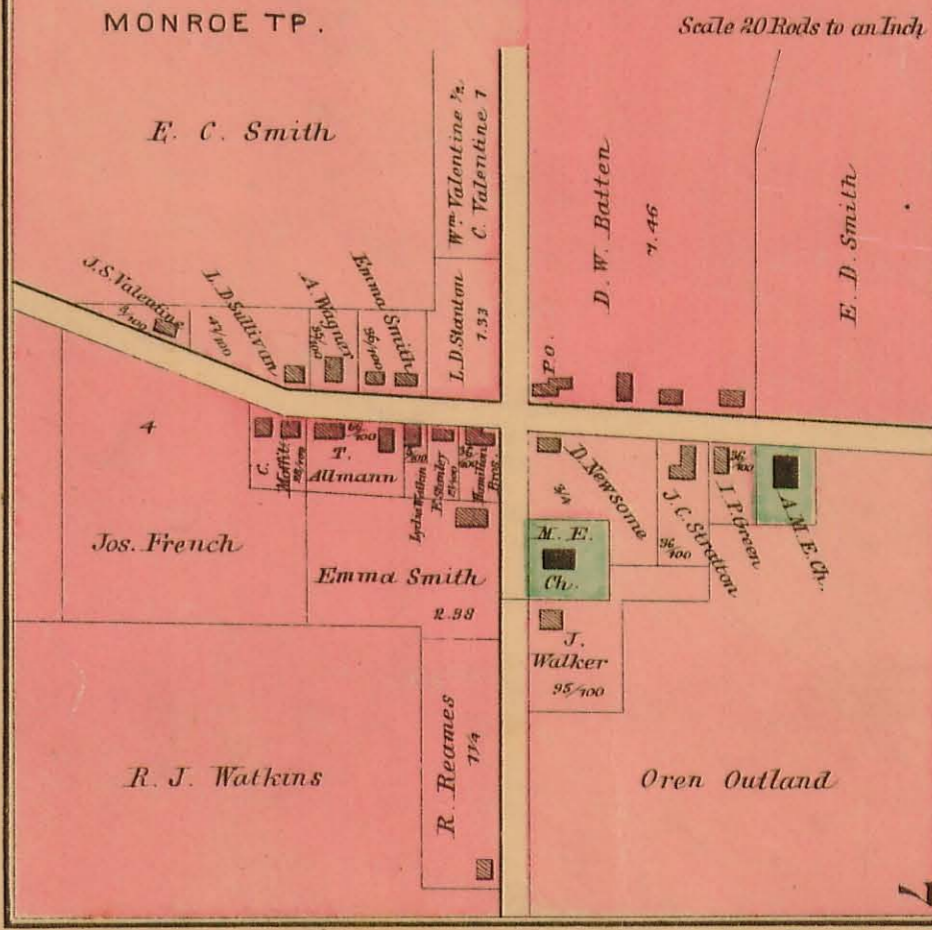
PERRY TWP. Scale 300 feet to an inch



ZANE T'WNSHIP REFERENCES.

J. M. GRAY, Township Trustee.
O. P. STOKES, Township Trustee.
CHARLES EWING, Stock Raiser and Farmer.
 Owner and keeper of the Stallion "Ohio Clay," 1 1/2 Miles Southwest of Middleburg. Description and Pedigree of Ohio Clay: Color, bay, with two white ankles behind; is 16 hands high; weighs 1175 lbs.; he possesses all the road qualities, and has shown heats in 2.40, without much handling. His Dam was by Flying Morgan; She could trot or pace in 3 minutes; Second dam by Hambletonian. Ohio Clay's sire was Wellwood's Harry Clay, record 2.34, he by Joe Hooker, he by Cassius M. Clay; C. M. Clay, at the close of the Campaign of 1877 he had over 40 descendants in the male line; in the 2.30 class he sired the American Girl, record 2.16 1/2, Hopeful, Lucy, Lady Snell, Sam Purdy, George M. Patchen, etc.

PICK RELTOWN

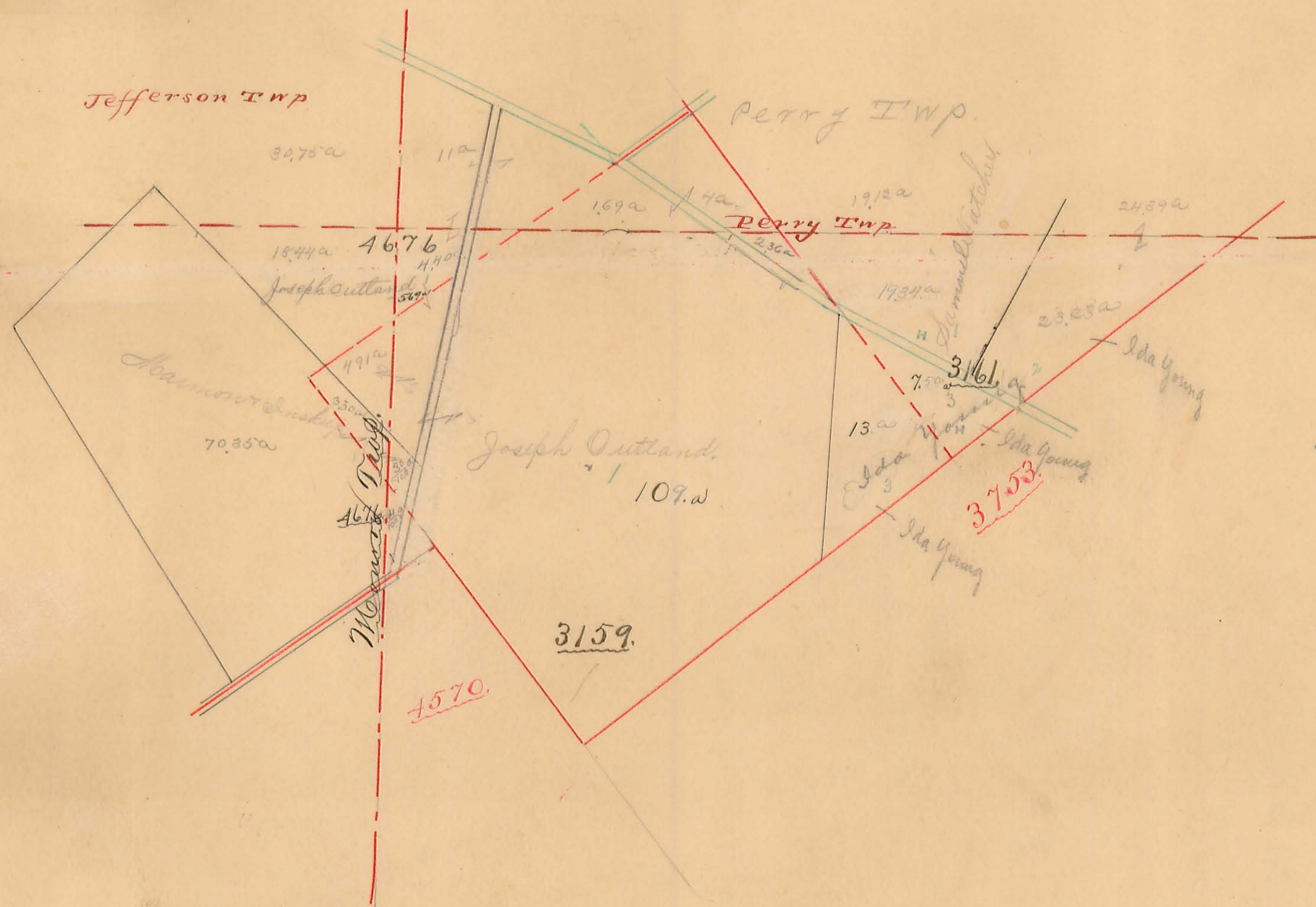


ZANE TOWNSHIP.

Scale, 1/0. chains per inch.

Plat of Military Survey No. 4676 Original Quantity Acres. Original Proprietor

3159
3161



ZANE TOWNSHIP.

Scale, 10 chains per inch.

Plat of Military Survey No. 3753 Original Quantity Acres. Original Proprietor



ZANE TOWNSHIP.

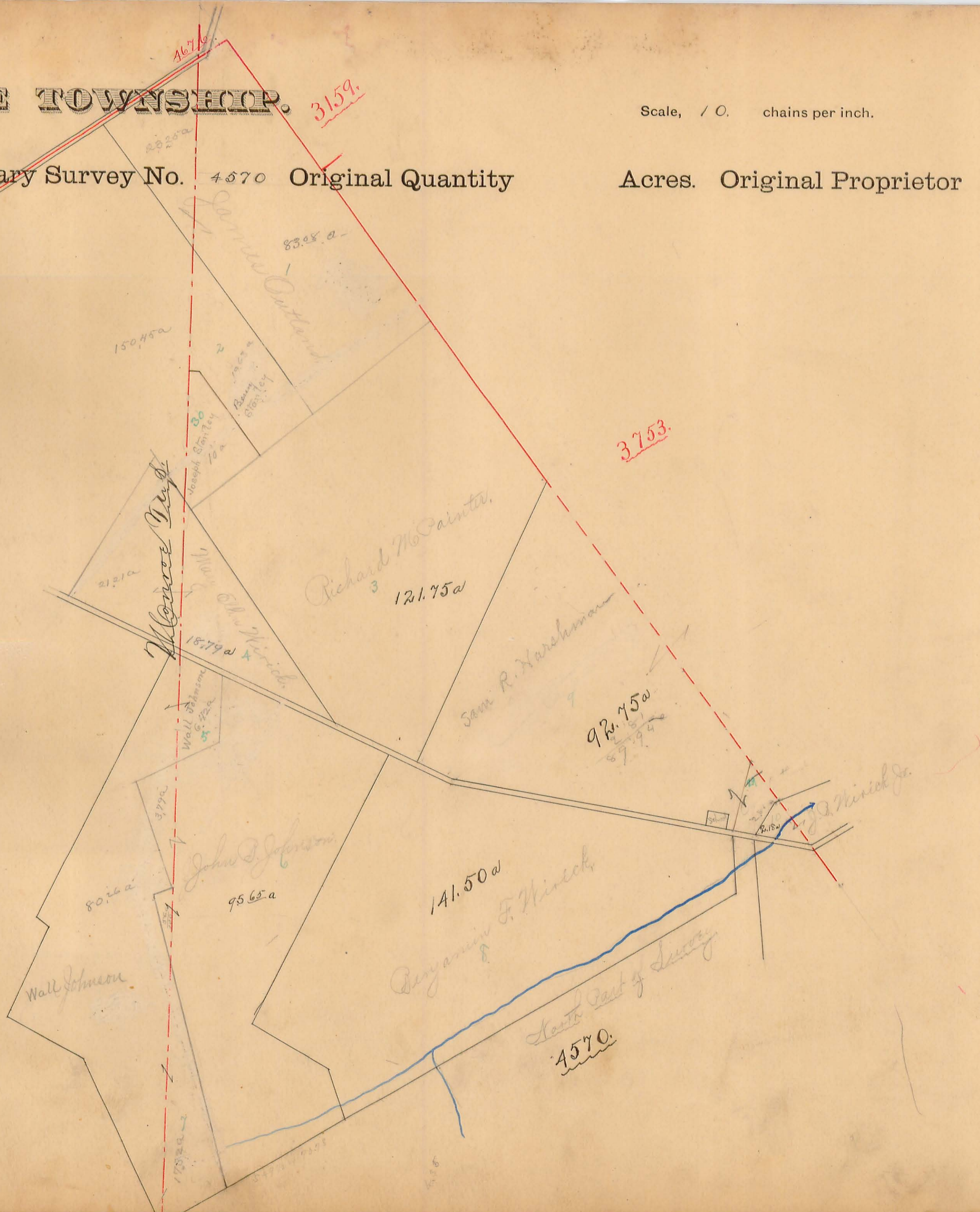
3159.

Scale, 1 0. chains per inch.

4.

North Part
Plat of Military Survey No. 4570 Original Quantity

Acres. Original Proprietor

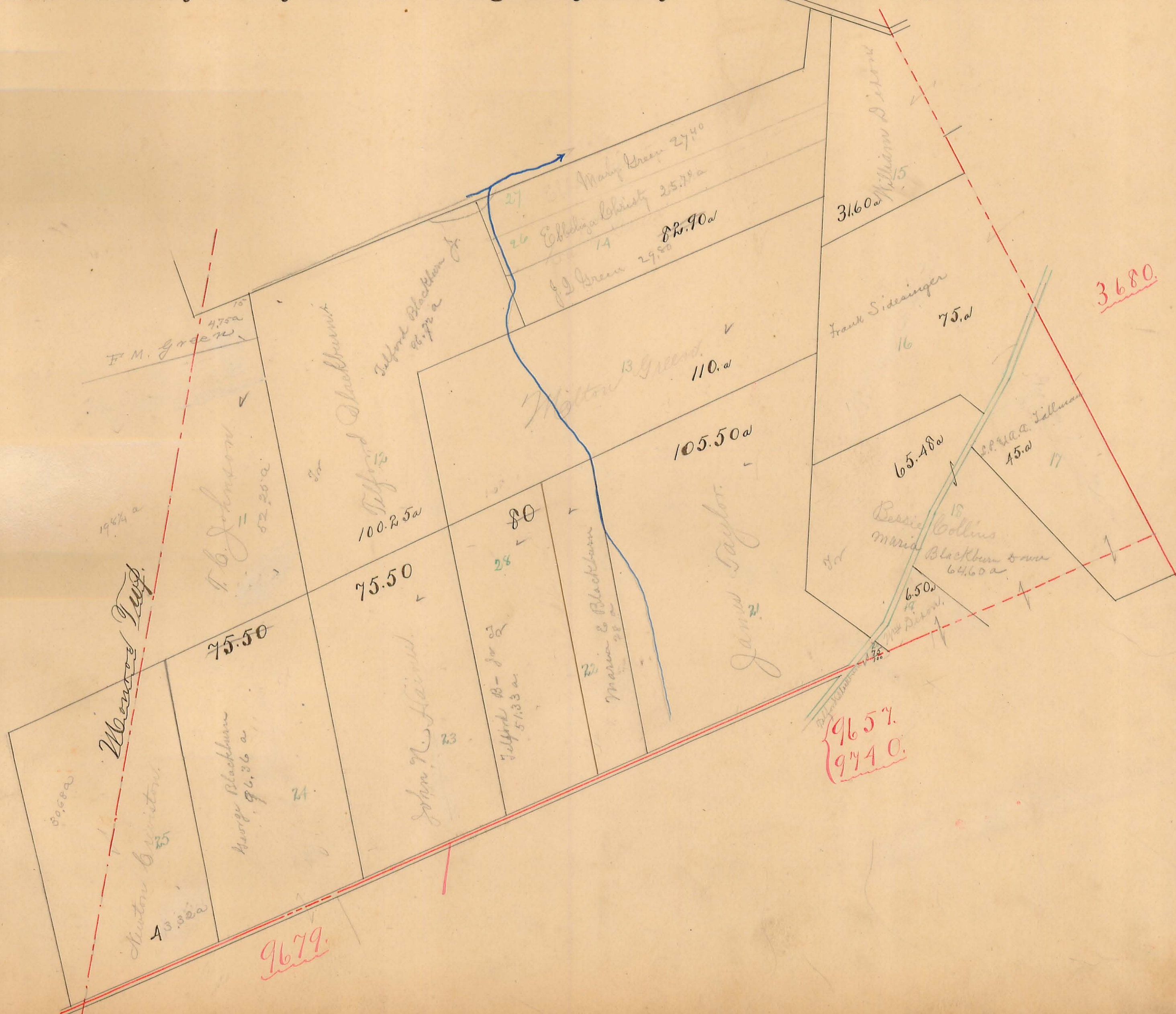


ZANE TOWNSHIP.

Scale, 10 chains per inch.

South Part
Plat of Military Survey No. 4570 Original Quantity

Acres. Original Proprietor



3680

9657
9740

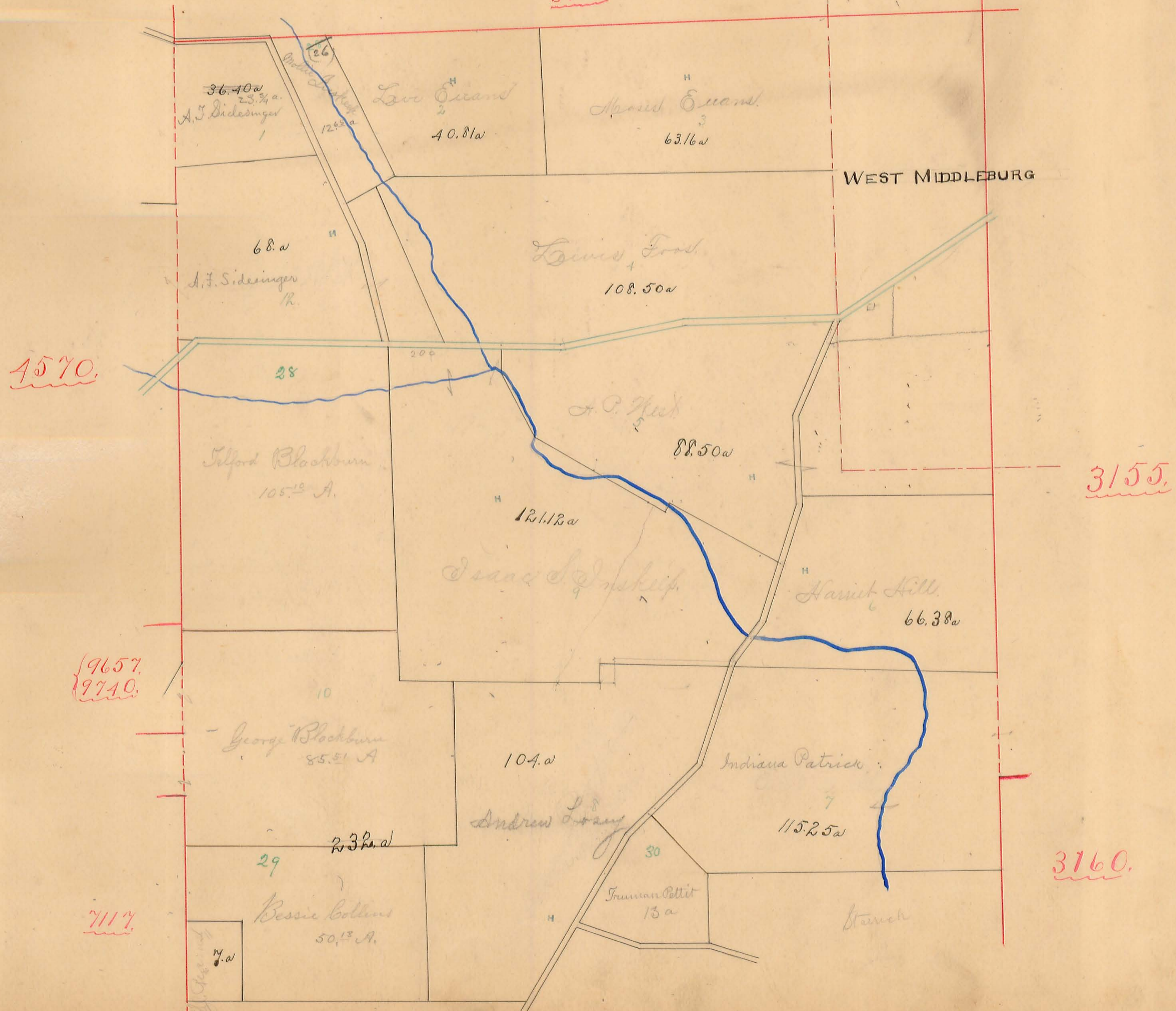
9679

ZANE TOWNSHIP.

Scale, 10 chains per inch.

North Park

Plat of Military Survey No. 3680 Original Quantity 3753. Acres. Original Proprietor



ZANE TOWNSHIP.

Scale, 10 chains per inch.

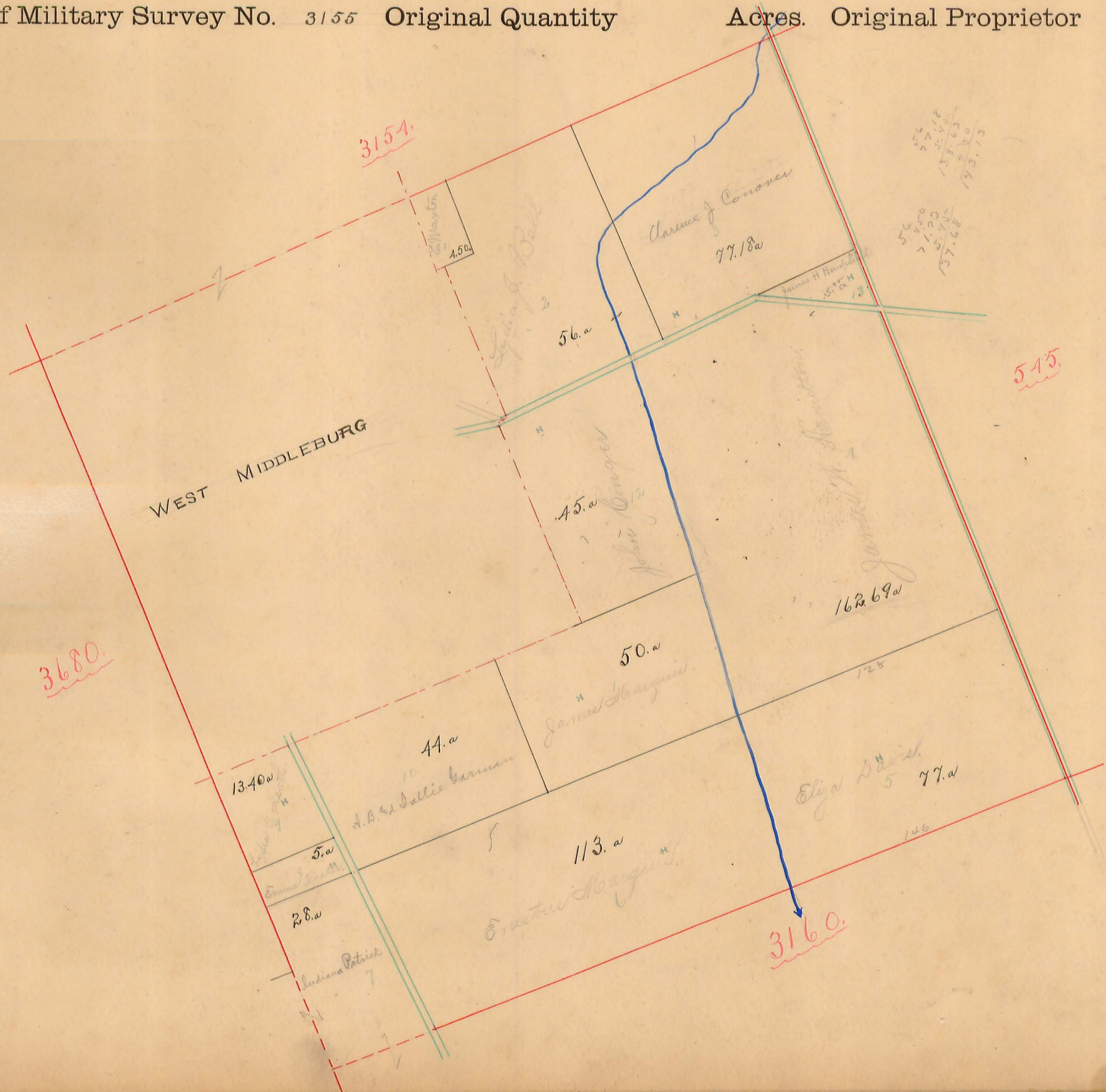
South Part
Plat of Military Survey No. 3680 Original Quantity Acres. Original Proprietor



ZANE TOWNSHIP.

Scale, 10 chains per inch.

Plat of Military Survey No. 3155 Original Quantity Acres. Original Proprietor



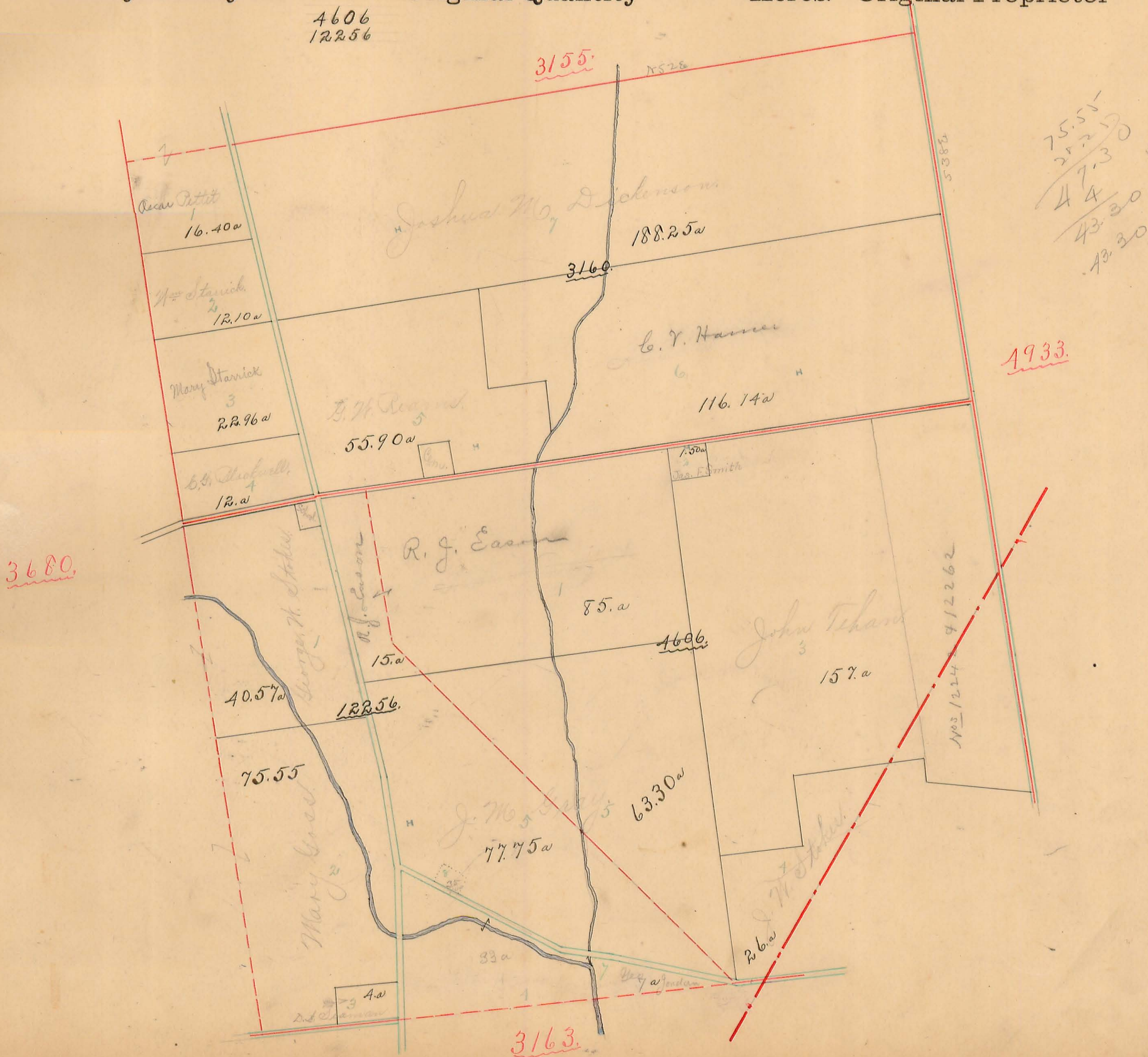
ZANE TOWNSHIP.

Scale, 10 chains per inch.

10.

Plat of Military Survey No. 3160 Original Quantity Acres. Original Proprietor

4606
12256



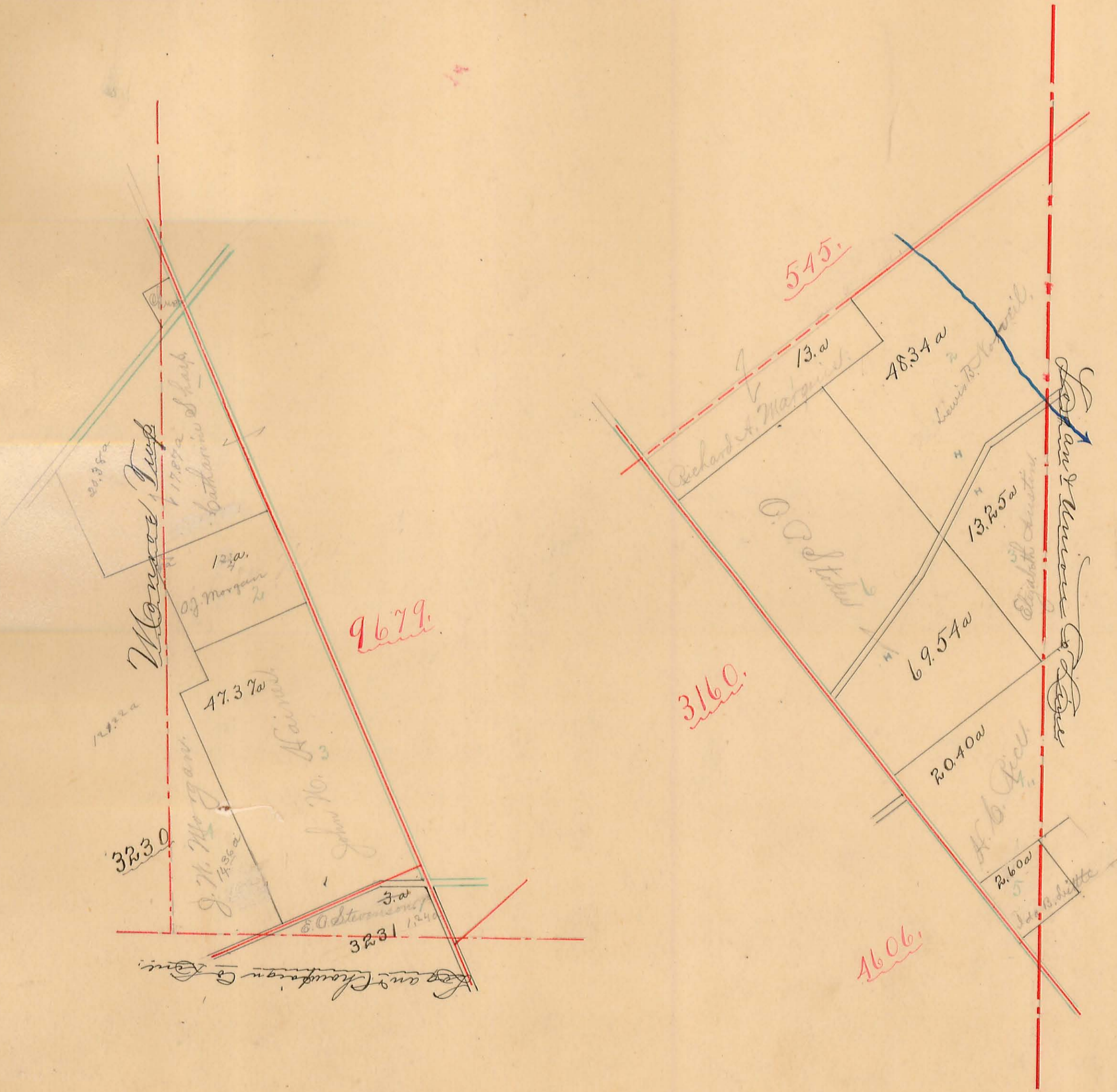
ZANE TOWNSHIP.

Scale, 10 chains per inch.

11.

Plat of Military Survey No. 4933 Original Quantity
3230

Acres. Original Proprietor

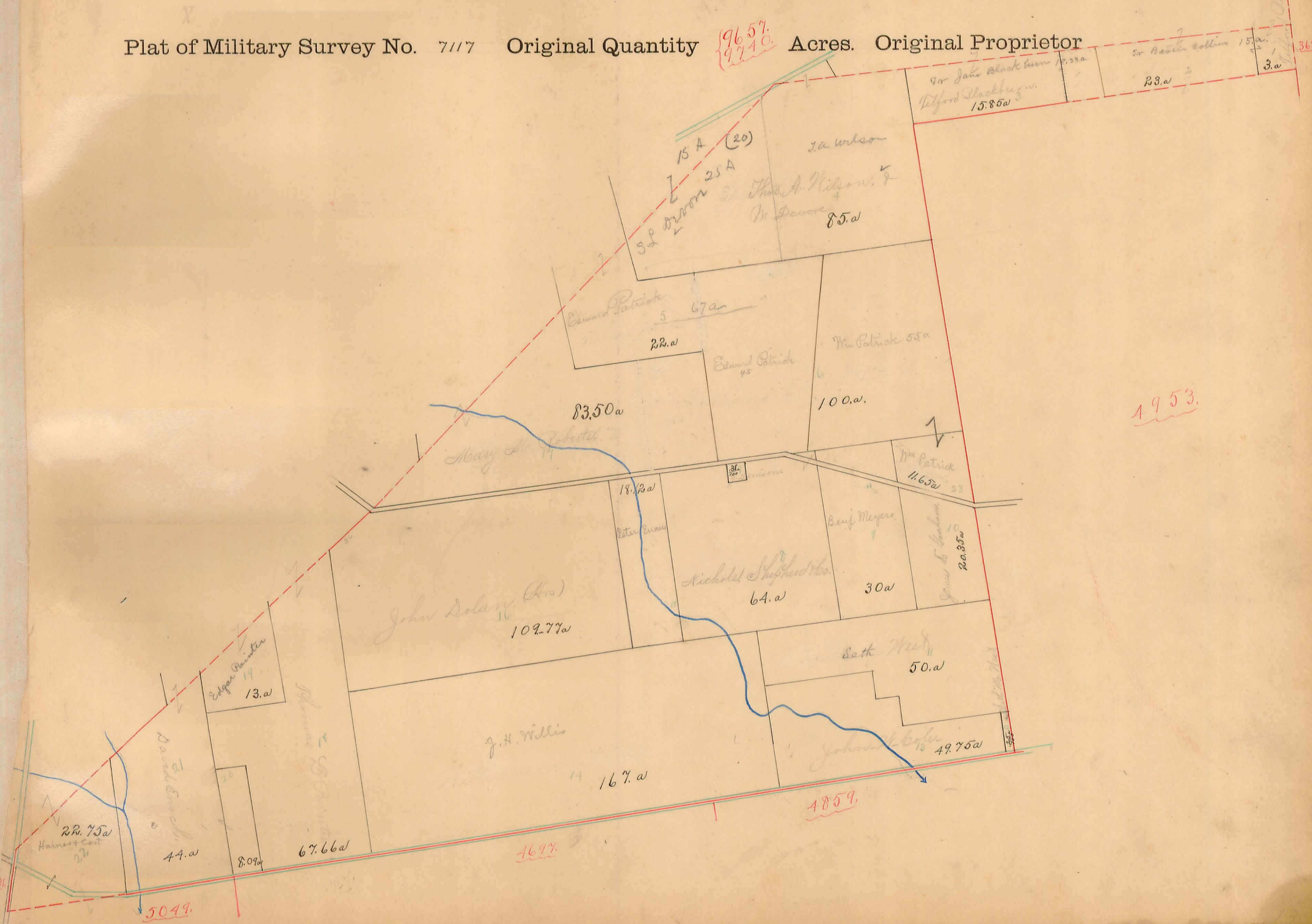


ZANE TOWNSHIP.

Scale, 10 chains per inch.

13.

Plat of Military Survey No. 7117 Original Quantity ^{9657.} _{9740.} Acres. Original Proprietor



ZANE TOWNSHIP.

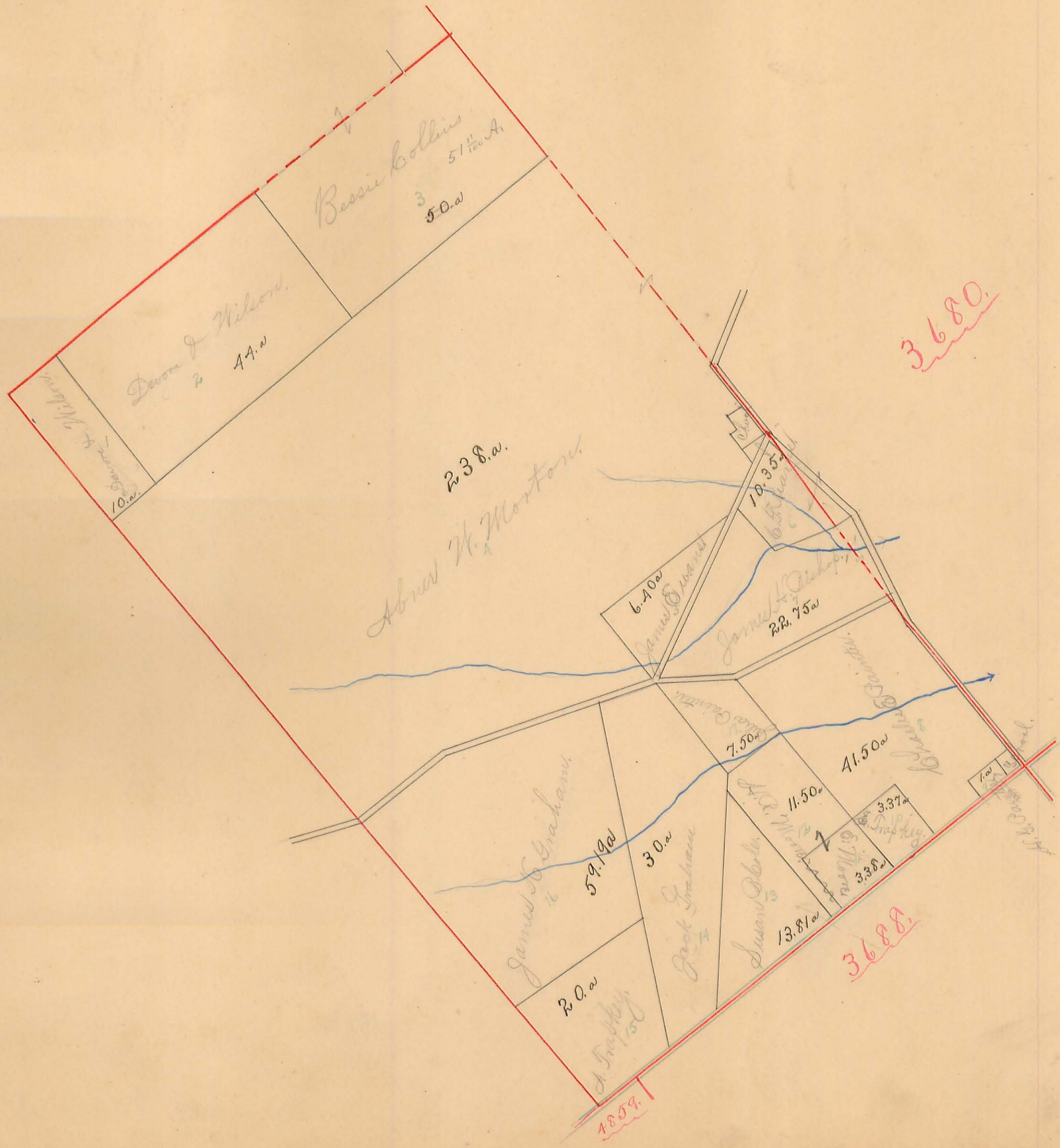
Scale, 10 chains per inch.

14.

Plat of Military Survey No. 4953 Original Quantity

Acres. Original Proprietor

711.7



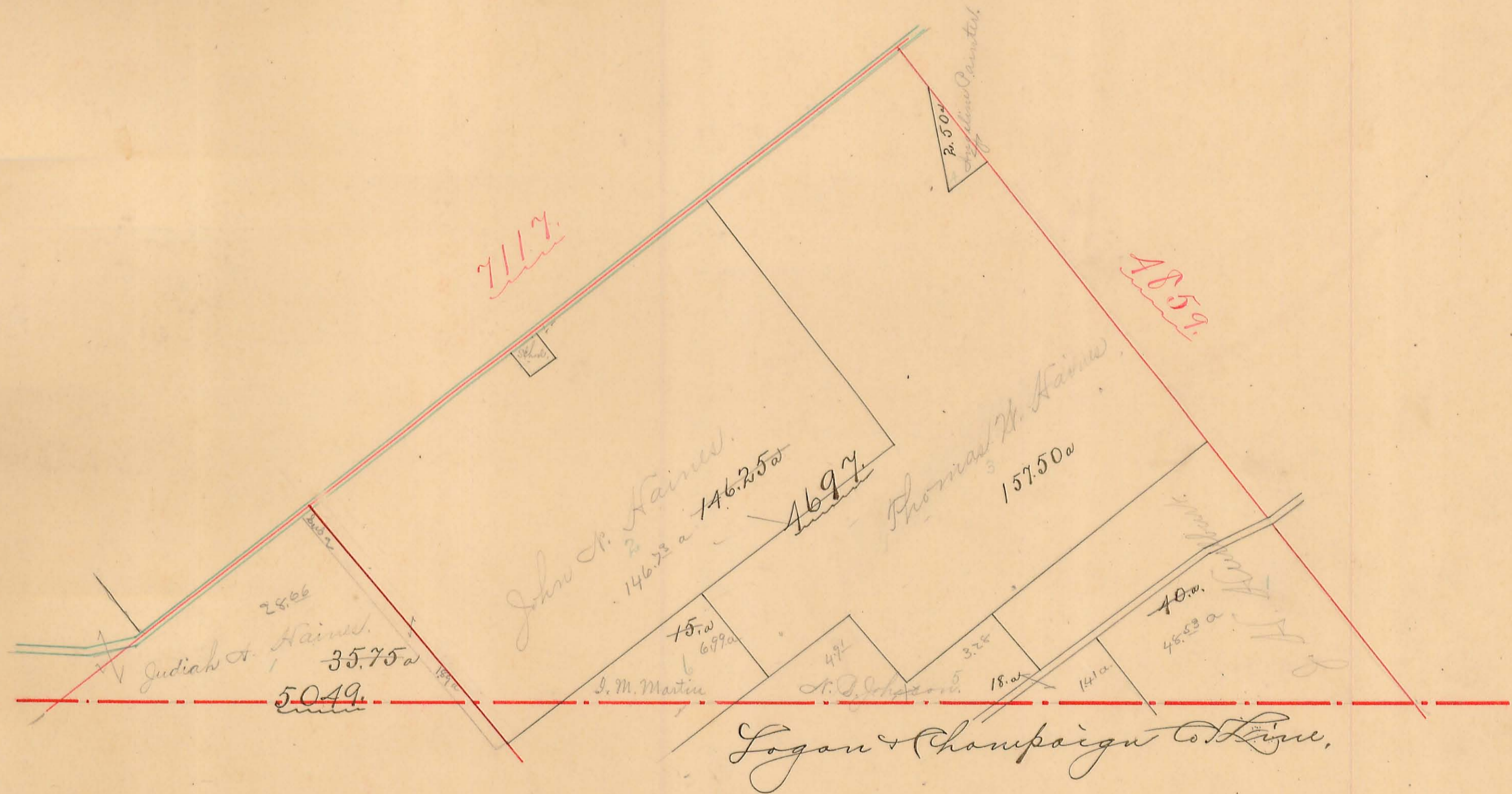
ZANE TOWNSHIP.

Scale, / 0 chains per inch.

15.

Plat of Military Survey No. 4697 Original Quantity
5049

Acres. Original Proprietor



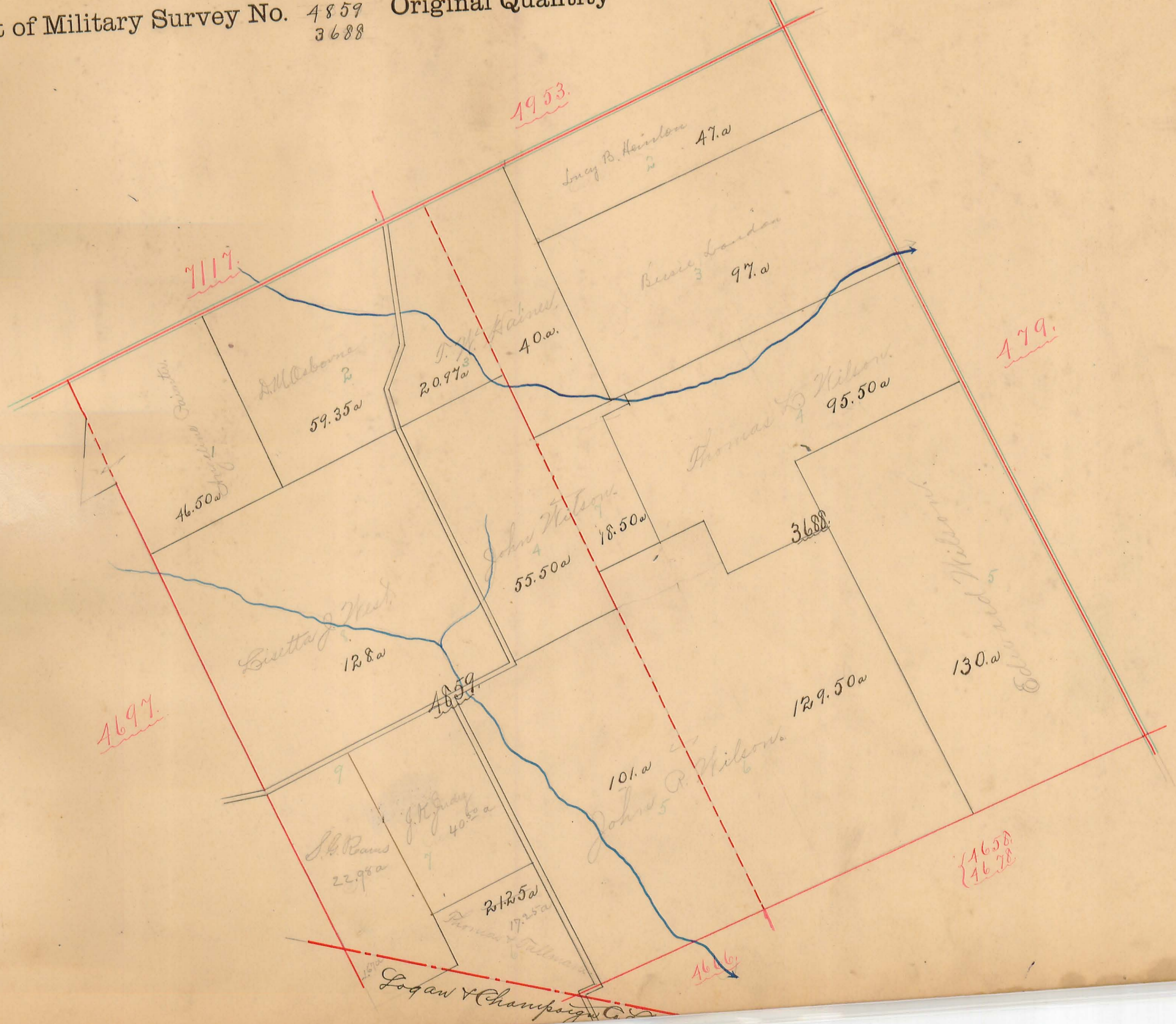
ZANE TOWNSHIP.

Scale, 10 chains per inch.

Plat of Military Survey No. 4859
3688

Original Quantity

Acres. Original Proprietor

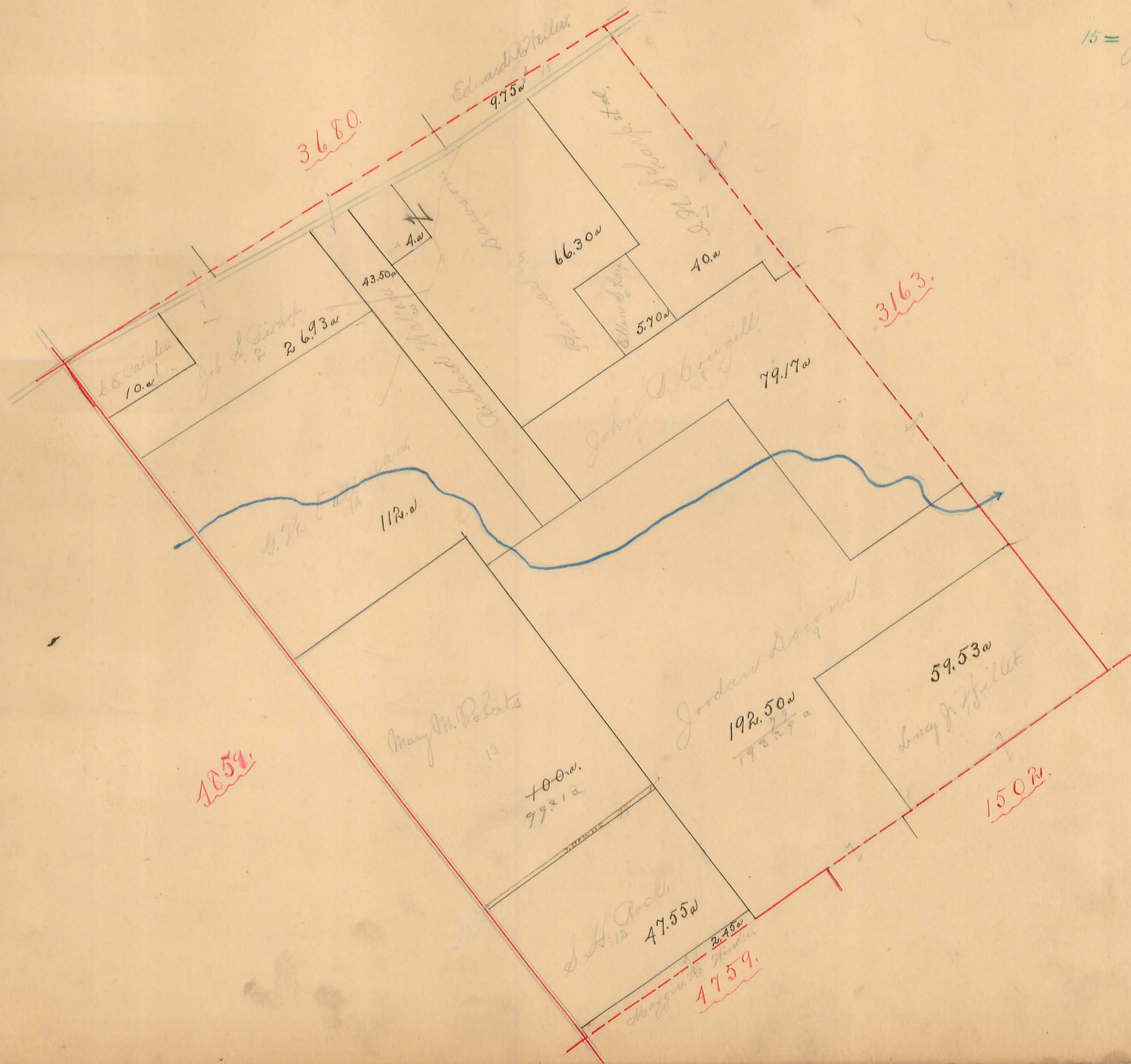


ZANE TOWNSHIP.

Scale, 10 chains per inch.

17.

Plat of Military Survey No. 479 Original Quantity Acres. Original Proprietor

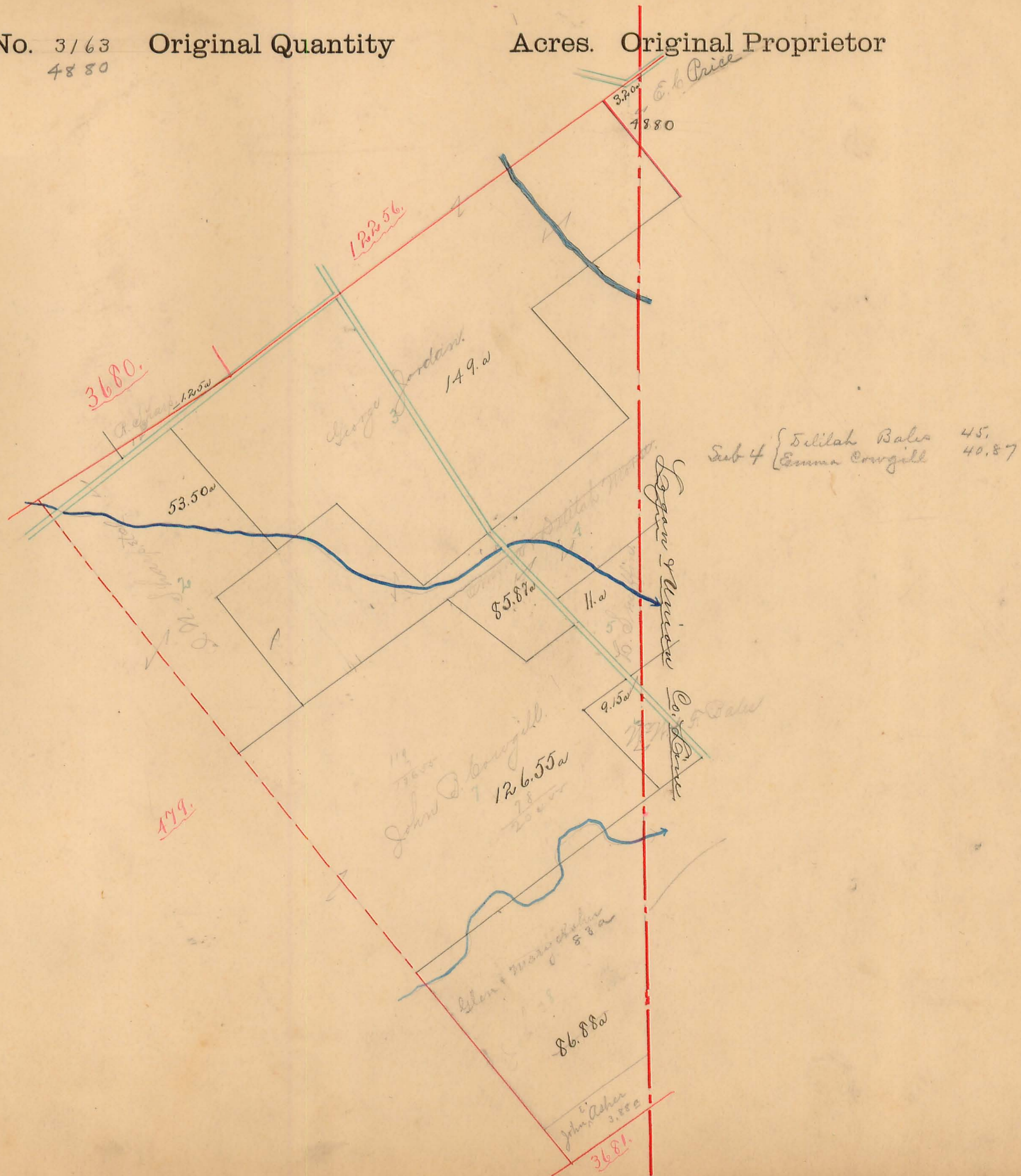


ZANE TOWNSHIP.

Scale, 10 chains per inch.

18.

Plat of Military Survey No. 3163 Original Quantity Acres. Original Proprietor
4880

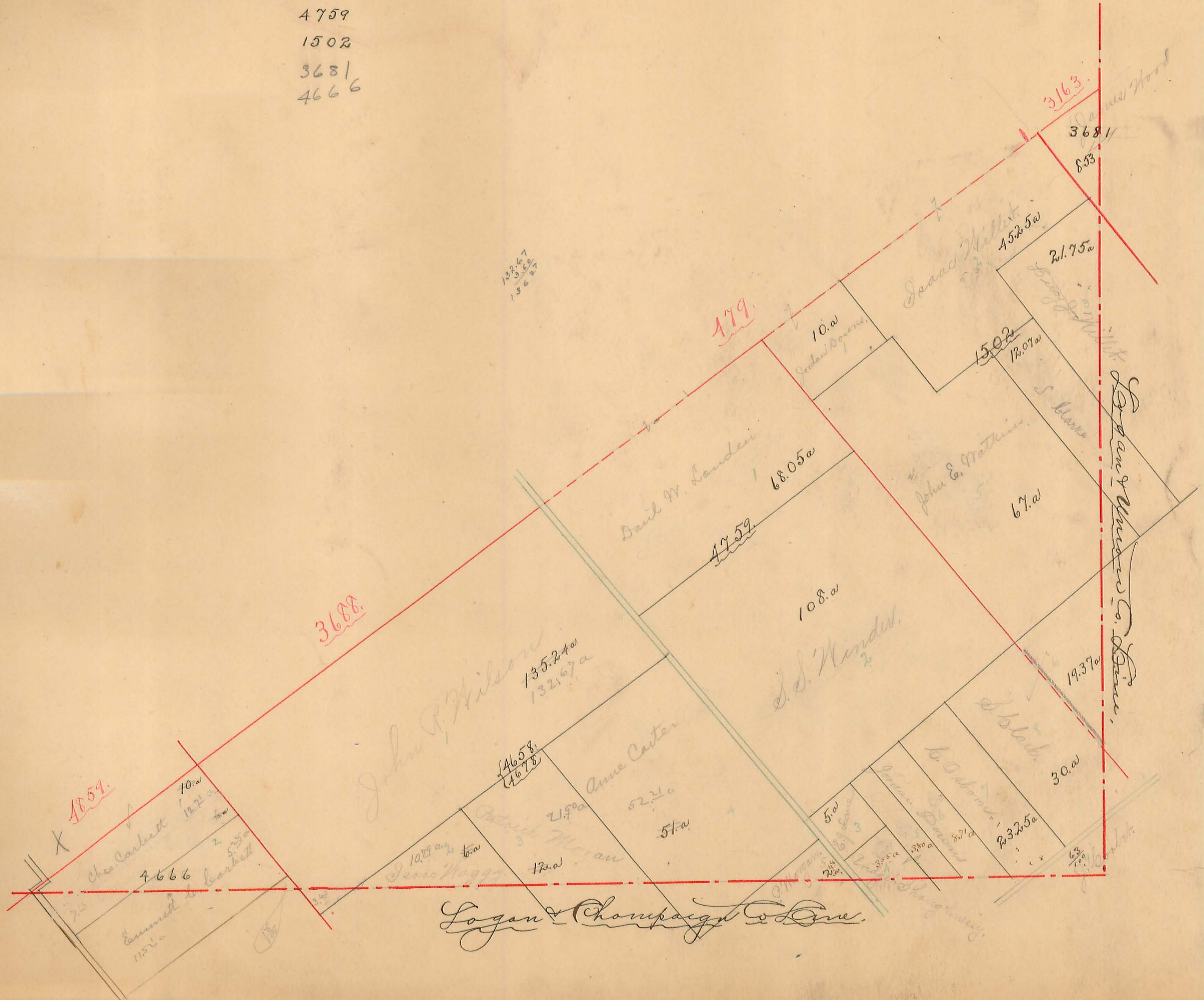


ZANE TOWNSHIP.

Scale, chains per inch.

19.

Plat of Military Survey No. { 4658 Original Quantity Acres. Original Proprietor
 4678
 4759
 1502
 3681
 4666



Logan & Champagne to Done.

PLAT of the TOWN of

West Middleburg in Lane Township

Scale, feet per inch.

Thomas Marquis
28.00 a

Lucius E. Cochran
58. a

10
4. a

Henry G. Bell
5 1/2 a

27.85 a

Israel Pool
2.22 a
E. Carpenter
50 a

Margaret Teets
6.60 a

Geo. W. Cochran
6. a

Joshua Ballinger
29. a

Eurem Carpenter
55.35 a

Jas. Marquis
5 1/4 a

W. S. Wilson

U R B A N A S T.

E. B. Norveil
8.80 a

Surv. 3680

Joseph Fox
12.35 a

W. D. Inskeep
4.22 a

Surv. 3155

E. T. Allen (heirs)
87.90 a

C. Shellabarger

A. P. West
29.68 a

A. P. West
31.00 a

Cemetery

A. P. West
10.32 a