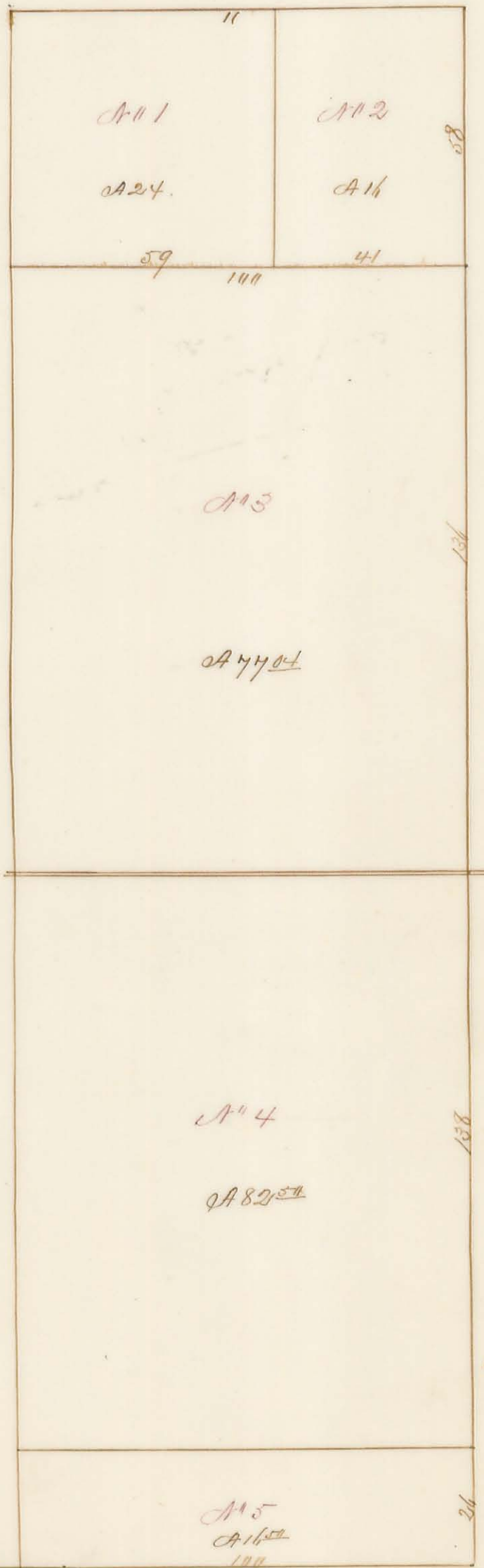


Mortous Survey No. 4498 West Part.

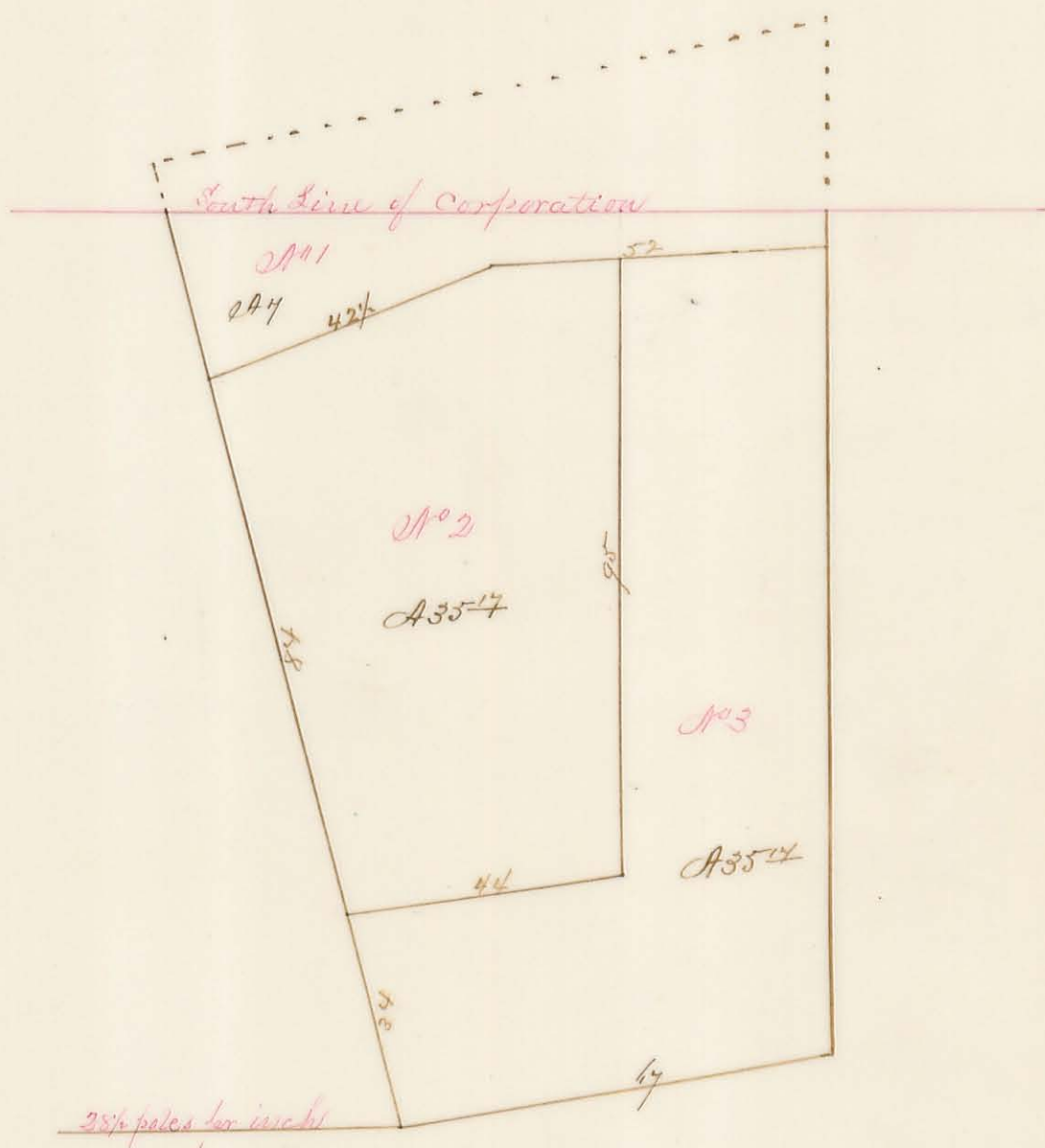


30 poles per inch

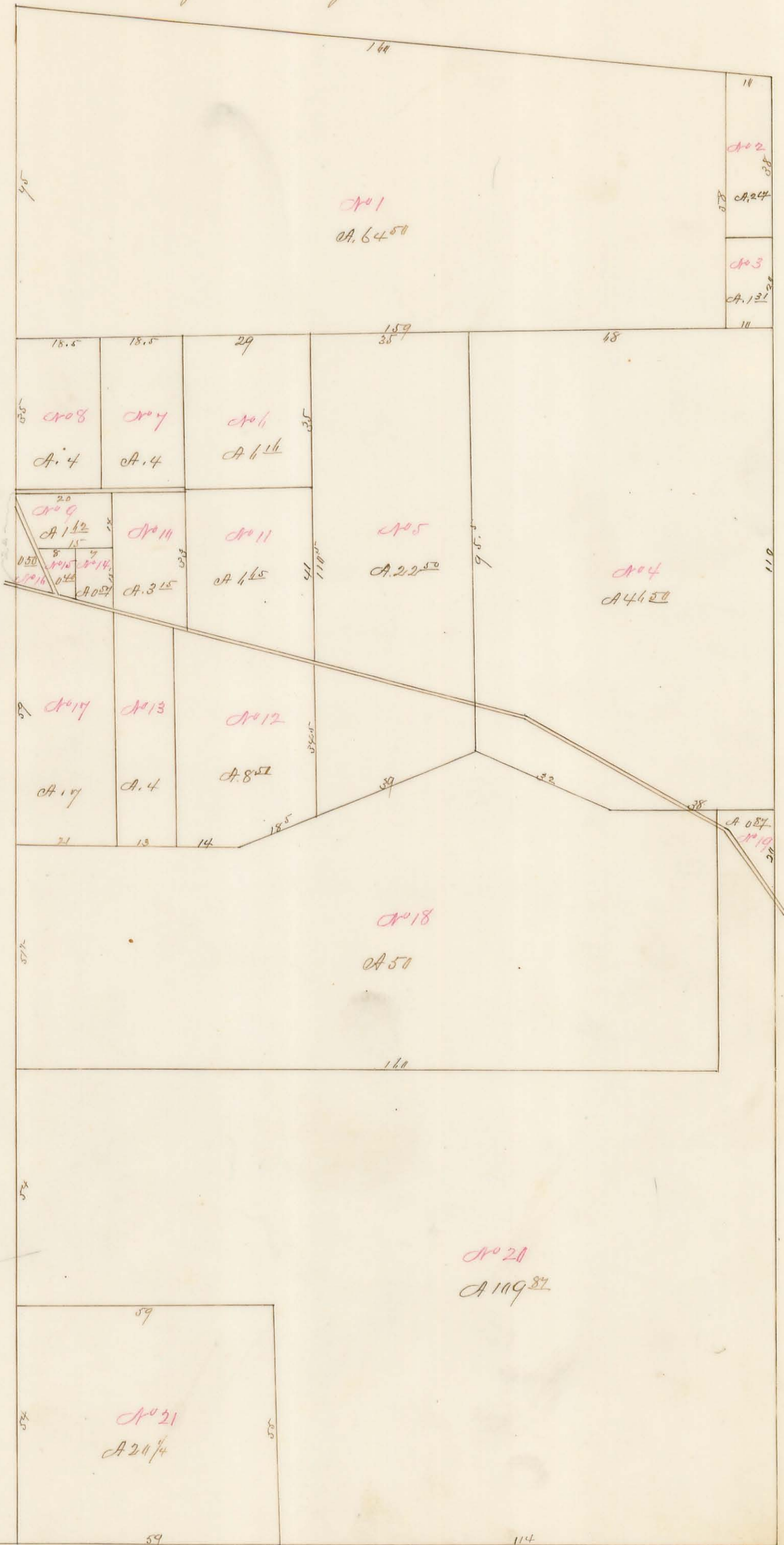
Byrd Fruit Survey No 5745.



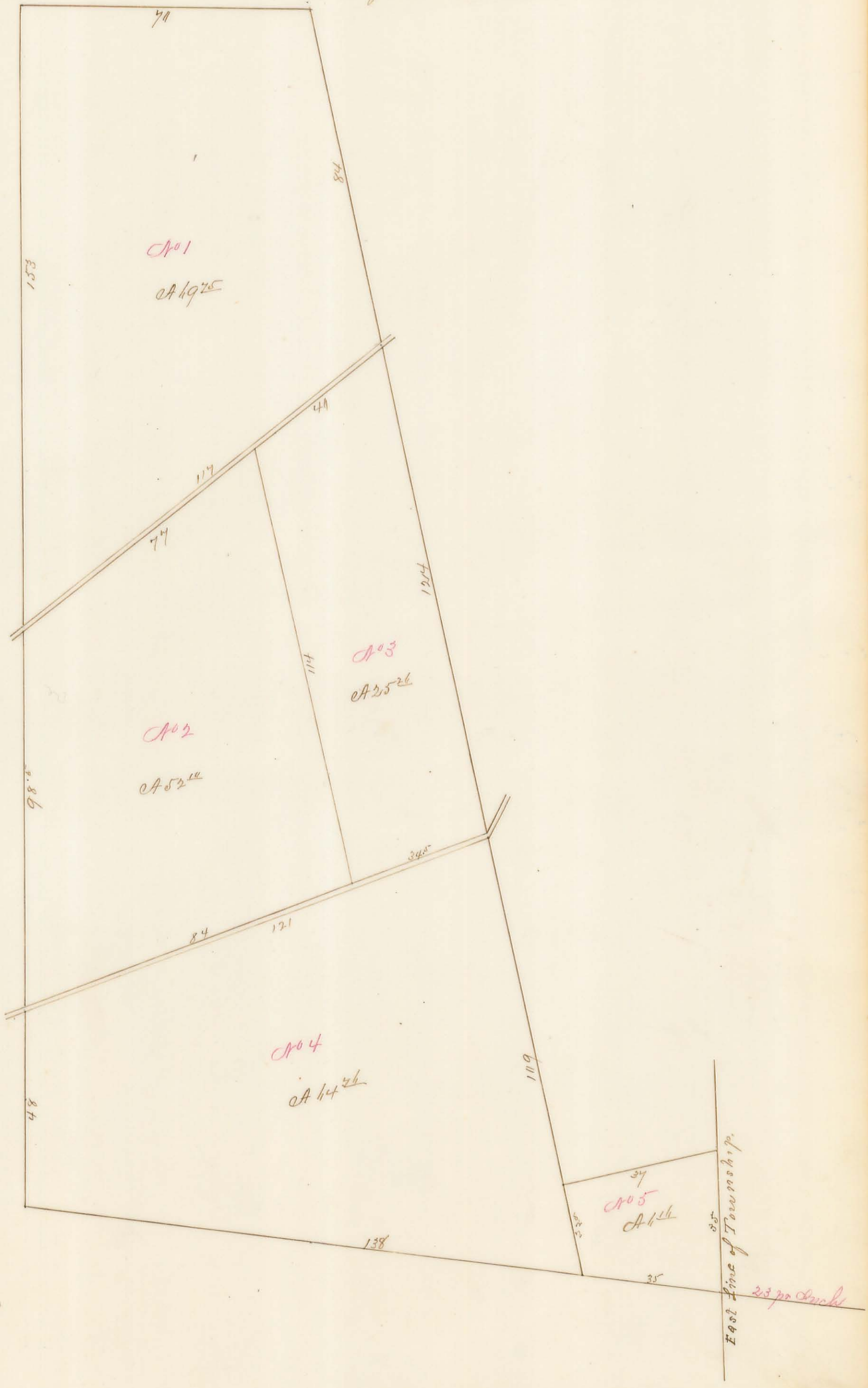
S. B. Ladd Survey Plat # 11186 and 11198.



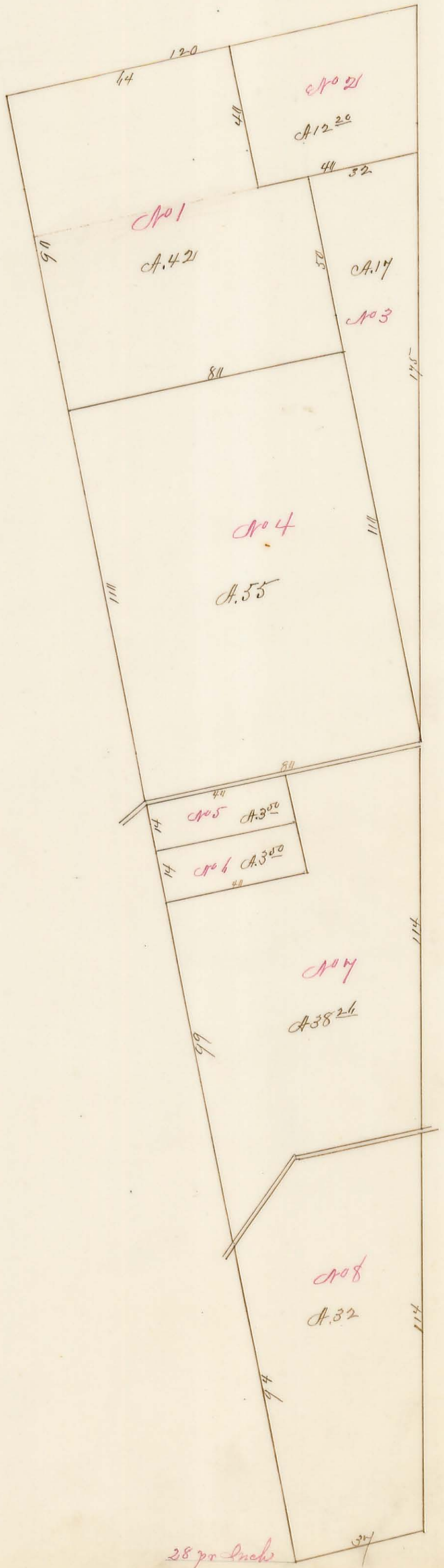
A.S. Hawbridge Survey No 4478



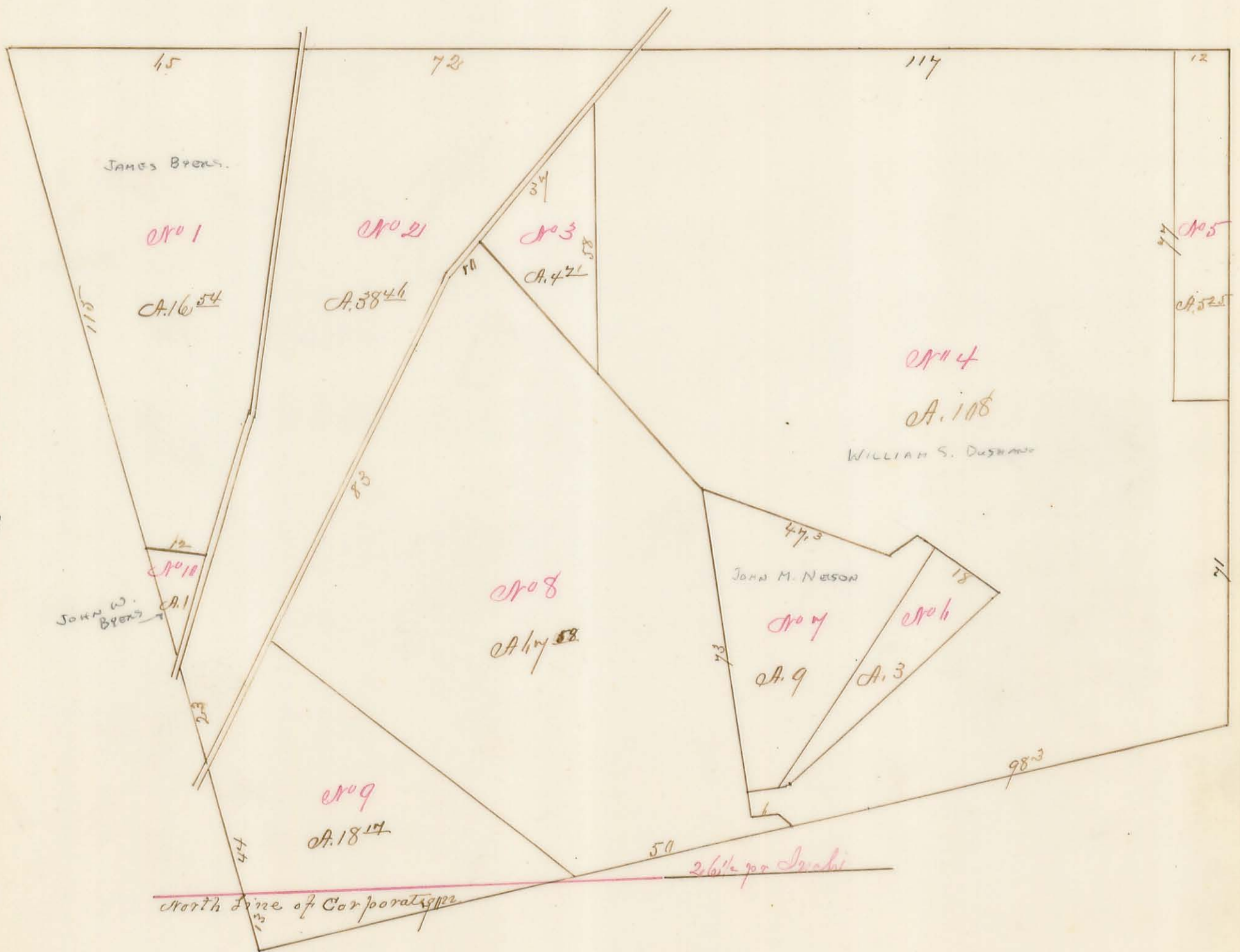
D. Worthington Survey No 4399 "West Part"



R. Powers Survey No 3483 "West Part"



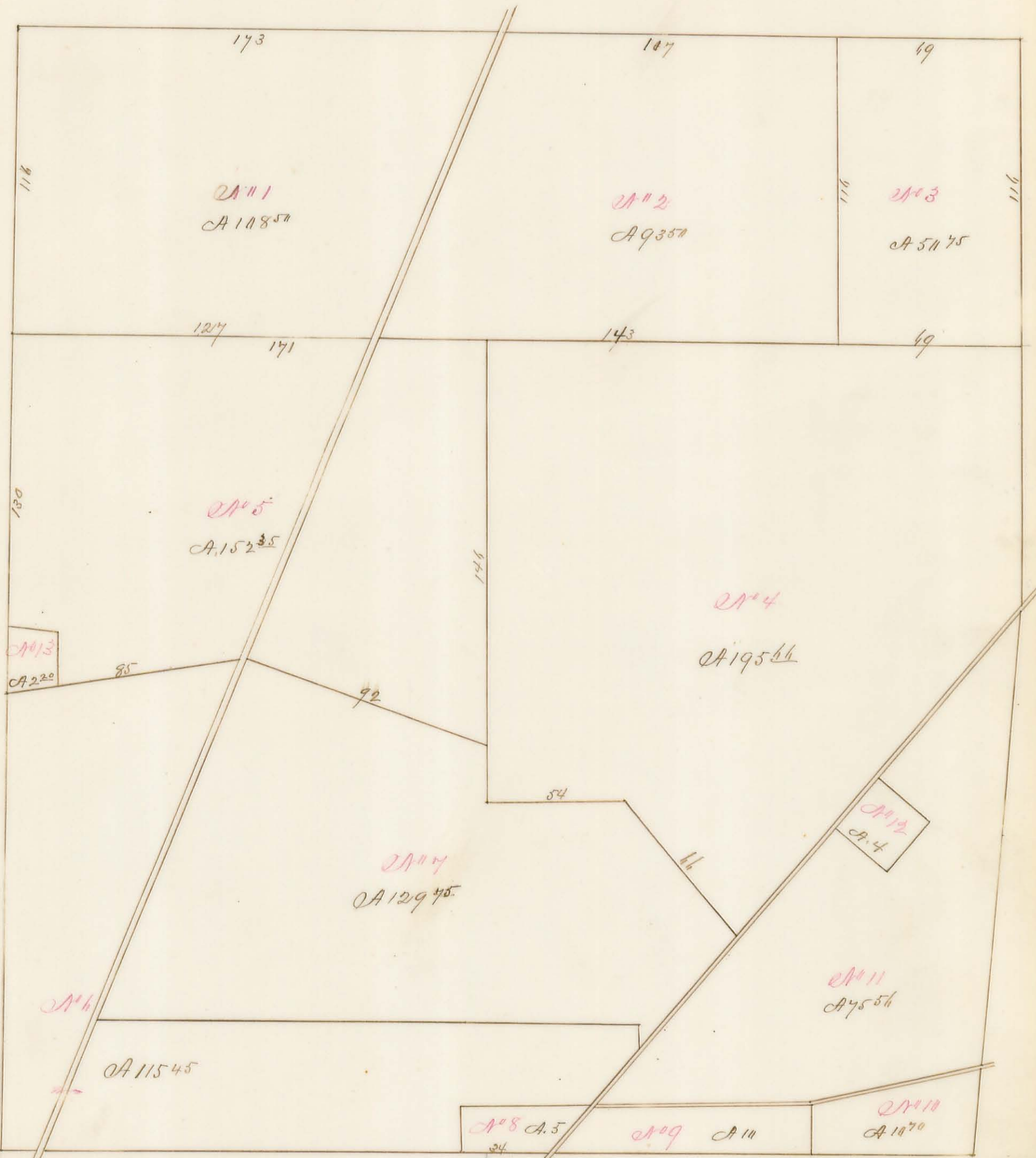
Walker Baylor Survey No 5245.



Saul Wallace Survey No 2873

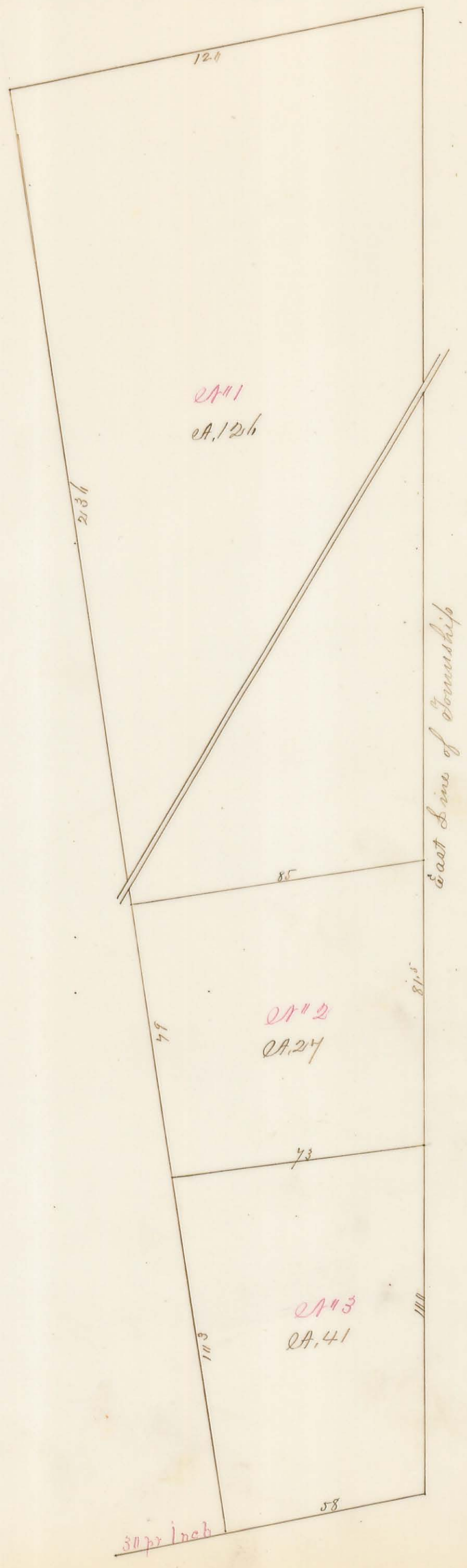


Lewis Parks Survey Tⁿ 3317



41 pr inch

John Scott Survey 27^o 3442 "West Part"



Layton Yaucy Survey No 3322 "West Part"

176



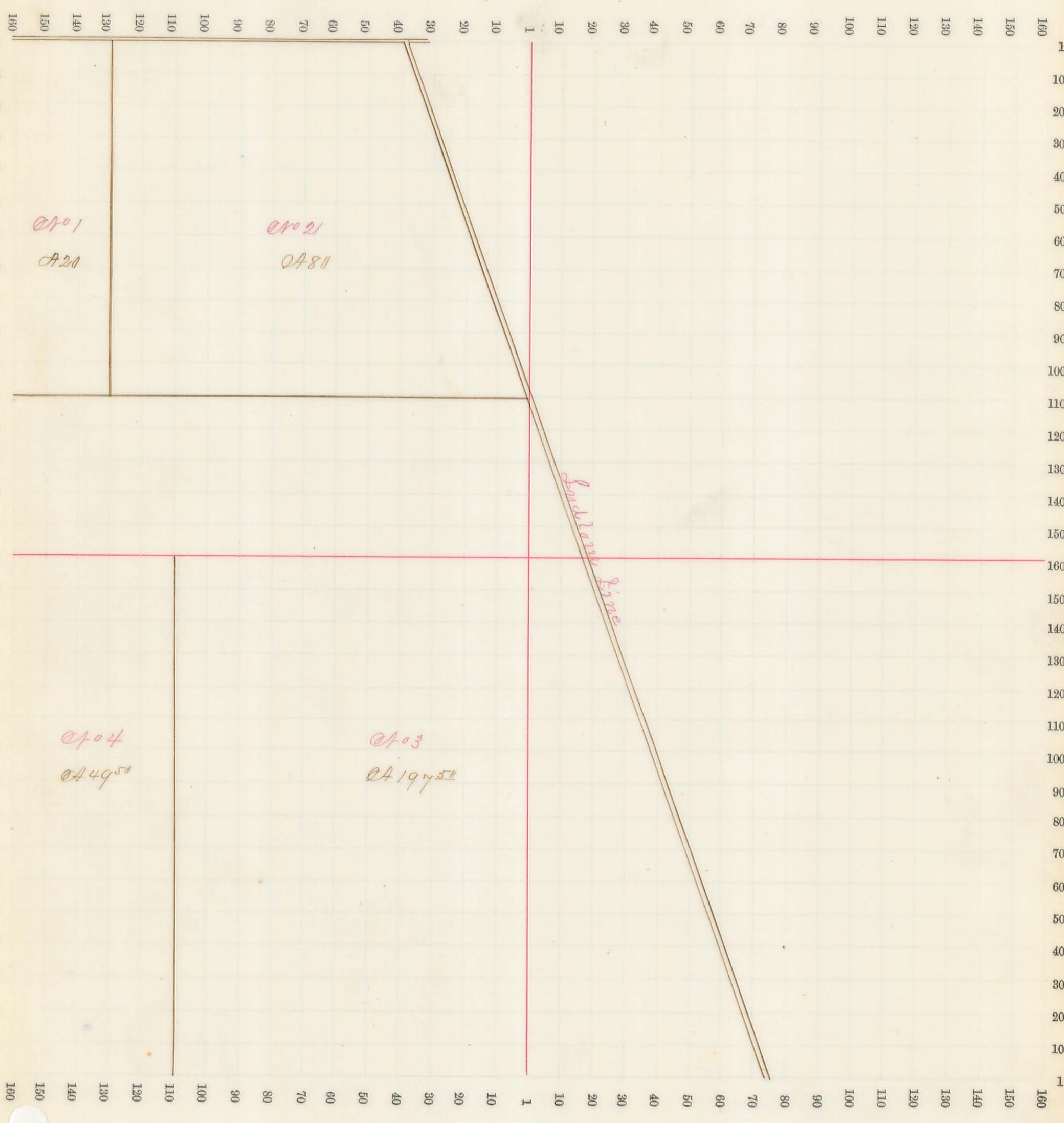
W.C. Church

Rail Road

30 pr Inch

Sec. No. 27 Scale 32 R. to an inch, or 10 to a space.

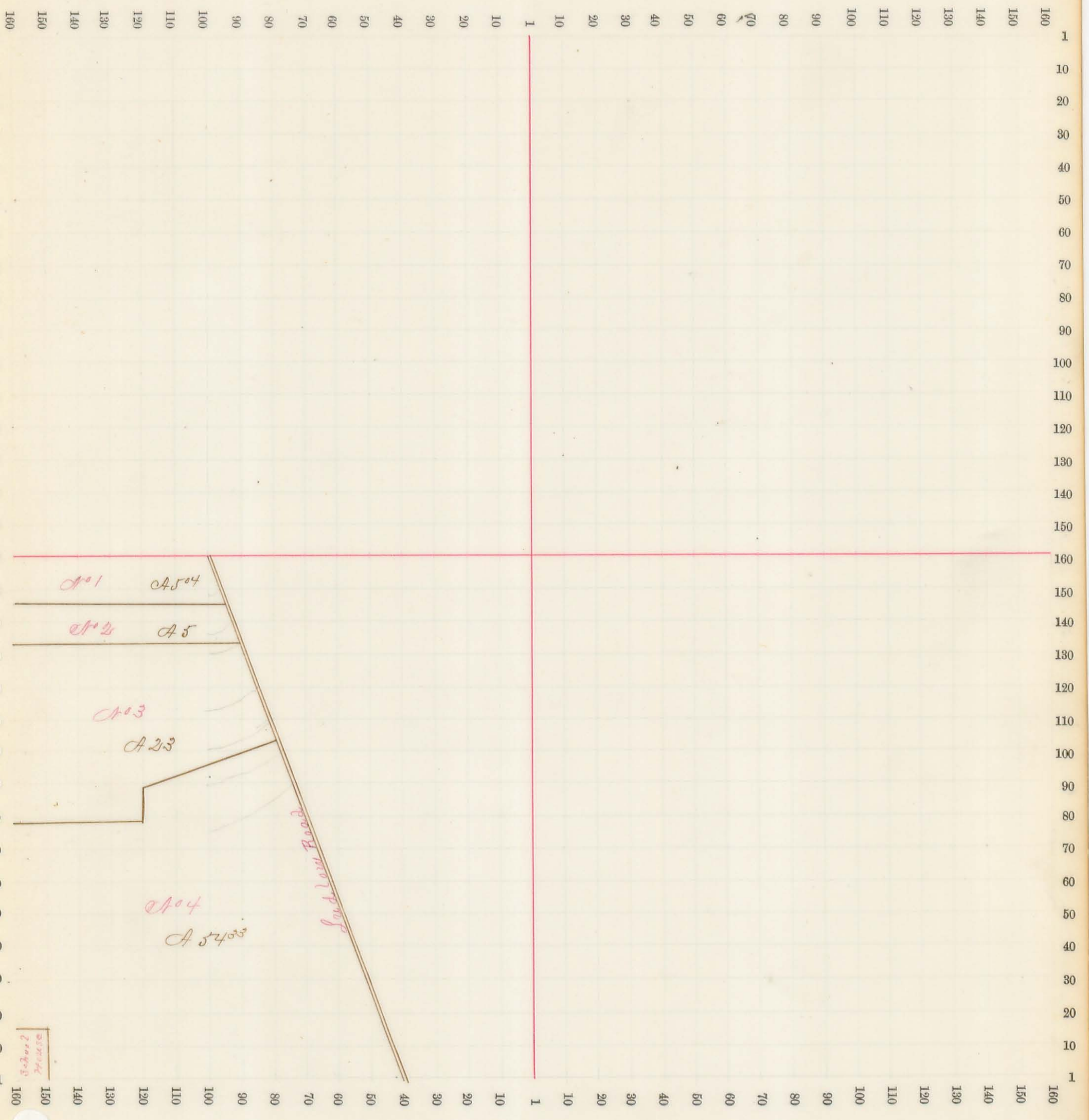
"Town 4 Range 14"



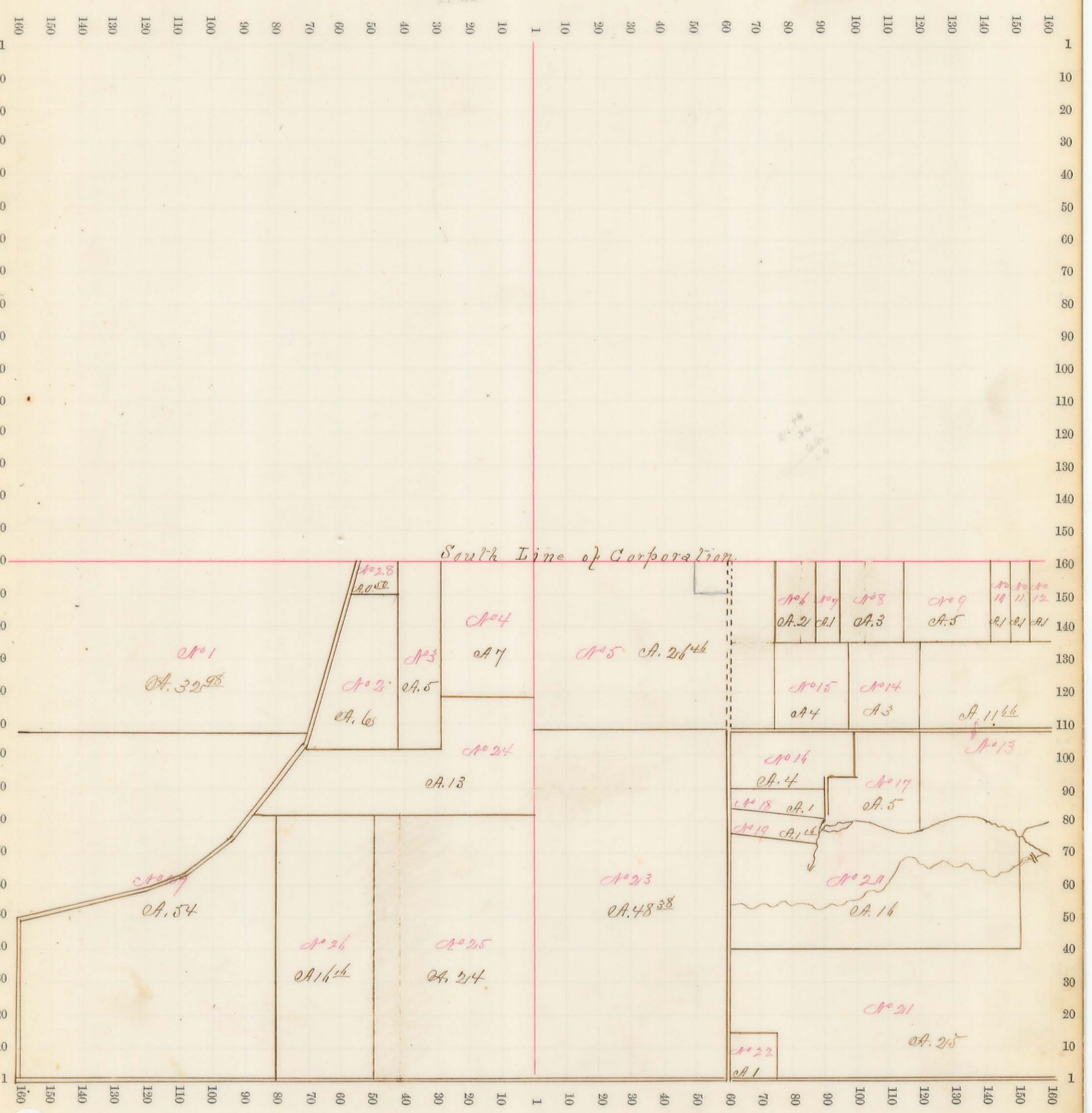
Sec. No. 28

Scale 32 R. to an inch, or 10 to a space.

Town 4 Range 14

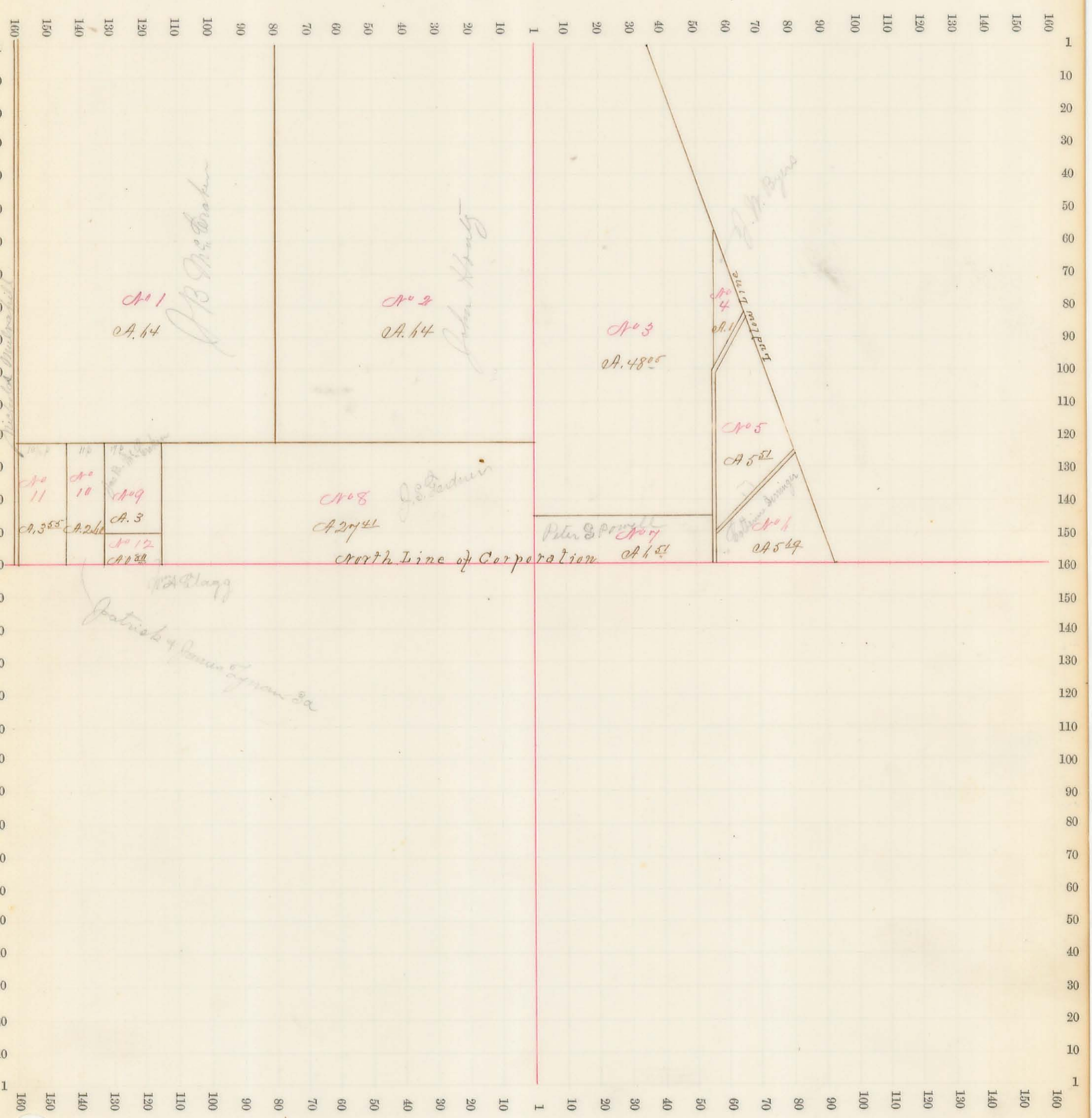


Sec. No. 34 Scale 32 R. to an inch, or 10 to a space.
 "Town 4 Range 14"

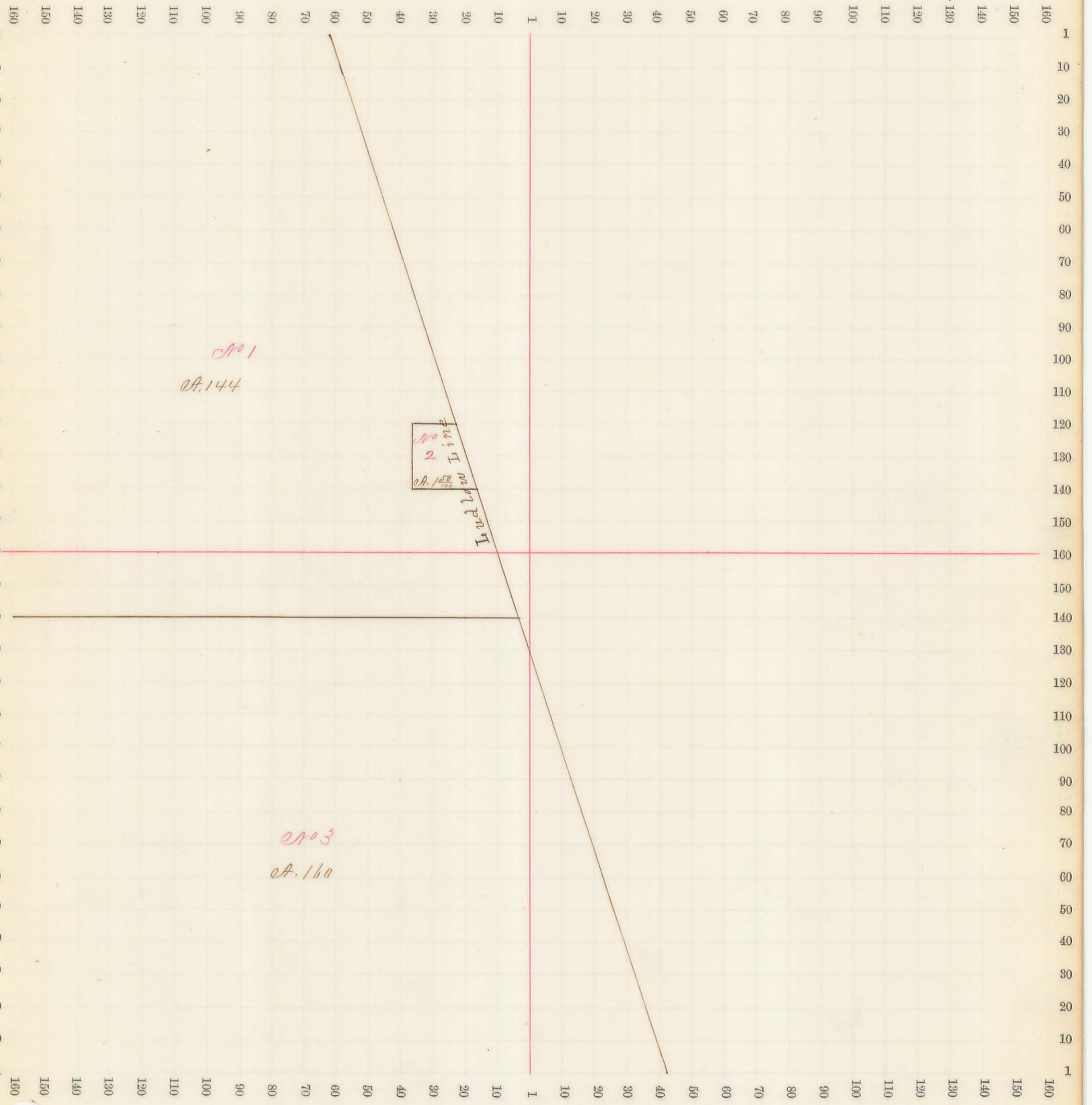


Sec. No. 35 Scale 32 R. to an inch, or 10 to a space.

"Town 4 Range 14"



Sec. No. 31 Scale 32 R. to an inch, or 10 to a space.
 "Town 4 Range 14"



Sec. No. 31

Scale 32 R. to an inch, or 10 to a space.

"Town 3. Range 15"

