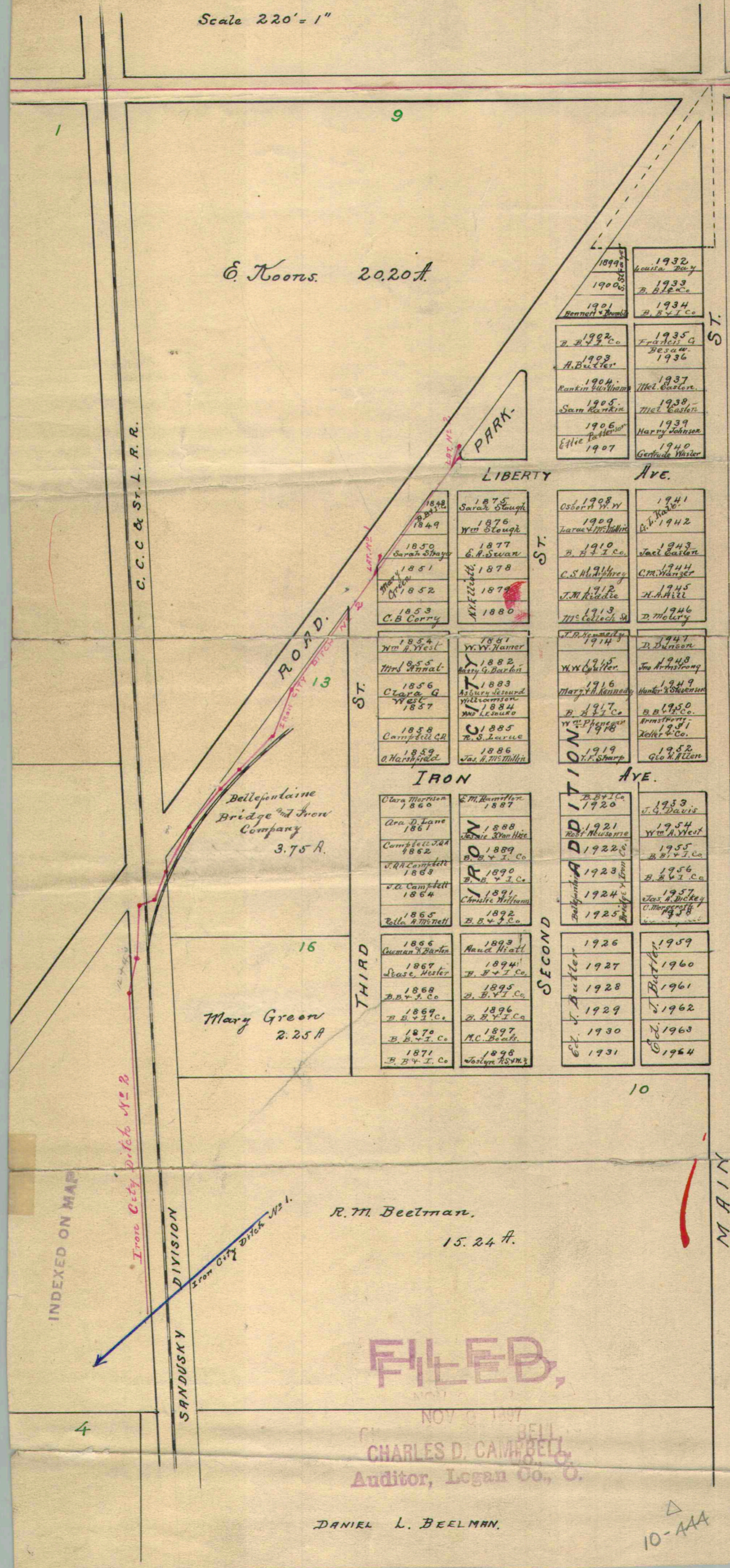


PLAT OF
IRON CITY DITCH N^o 2.

Lake Township, Logan Co., O.

Wilbur A. Ginn, Eng'r
 1897.

Scale 220' = 1"



FILED,
 NOV 6 1897
 CHARLES D. CAMPBELL
 Auditor, Logan Co., O.

DANIEL L. BEELMAN.

10-AAA