

Revised on Westport Map 1850

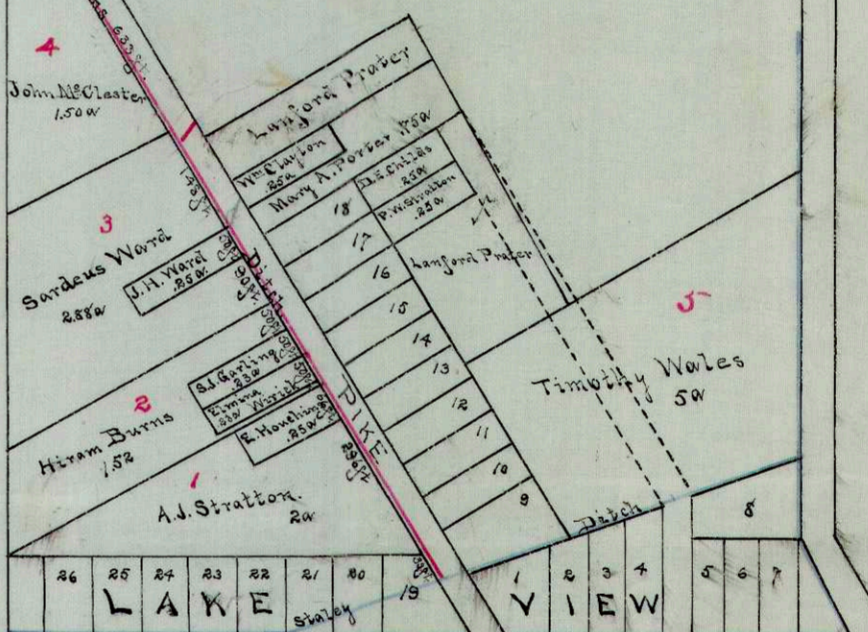
SOUTH 1/2 SEC. 27. T. 6. R. 3.

5
Geo. F. Moore

6
William Shafer
1600.

5
Nickell and Stephenson
43.250

LEWISTOWN BY NEW HAMPSHIRE



Map of
HOUGHINS DITCH
STOKES TWP.

INDEXED ON MAP

10-389