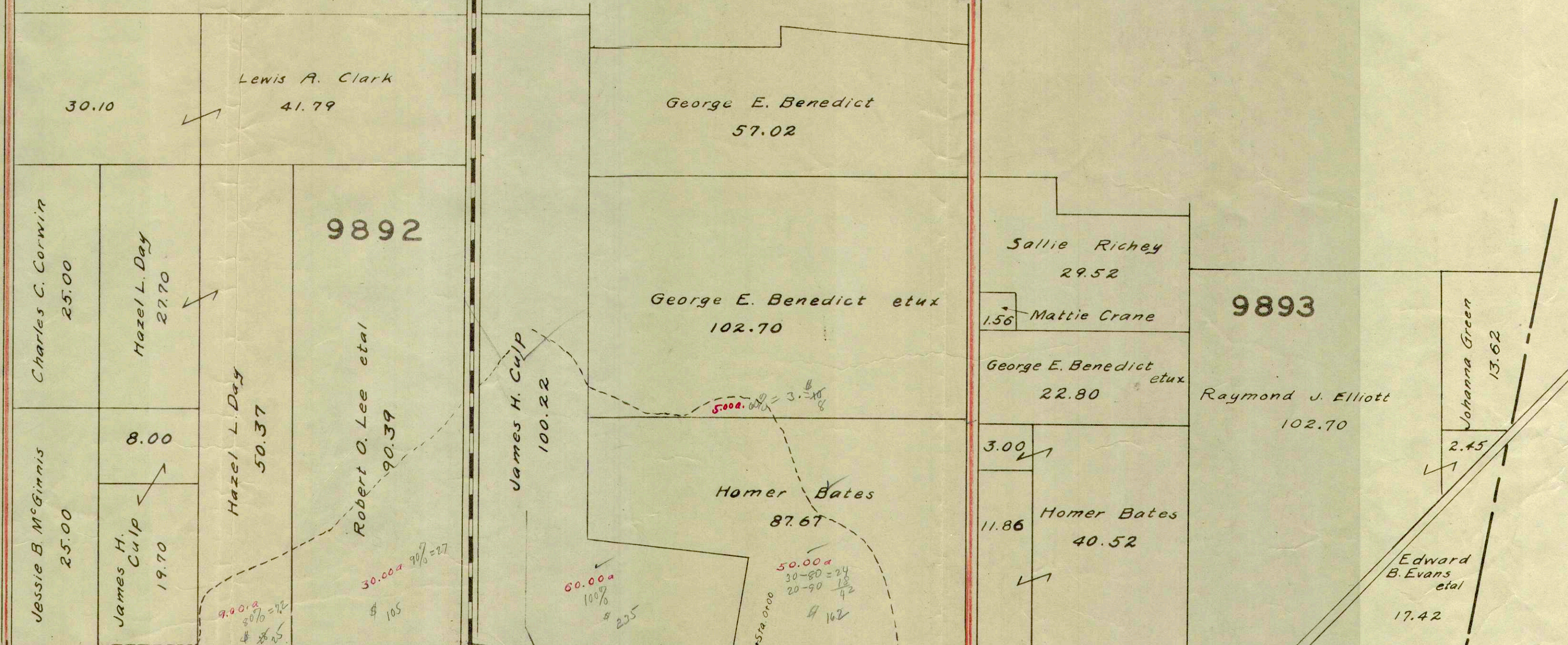
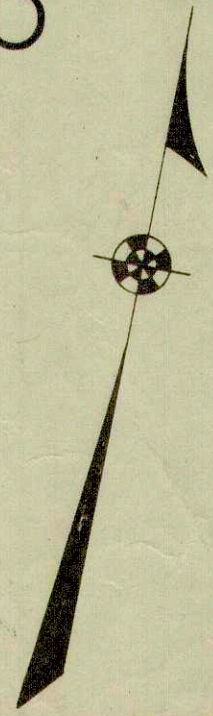


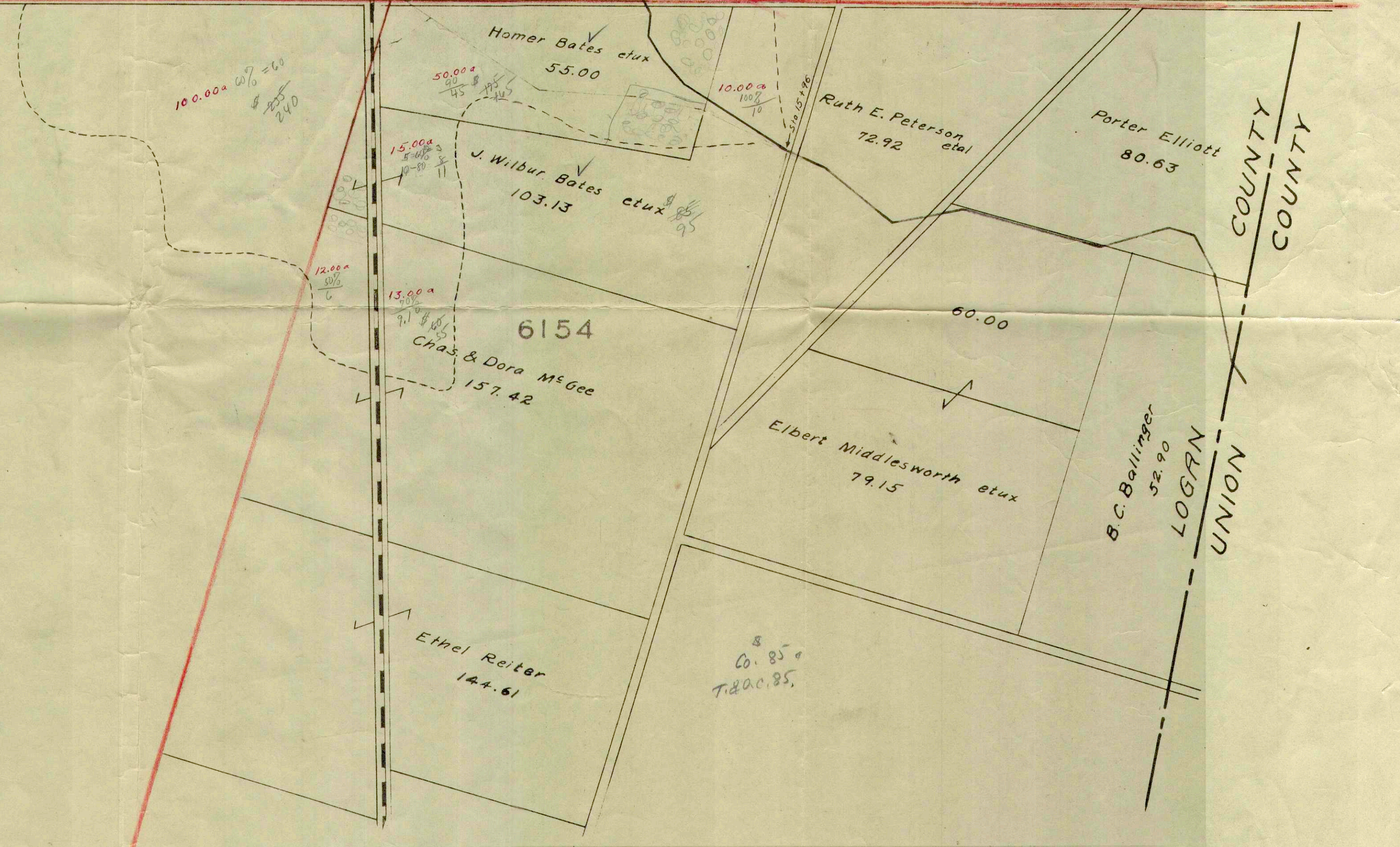
HOOVER DITCH NO. 561  
 BOKESCREEK TOWNSHIP  
 LOGAN COUNTY, OHIO  
 1936



1260.00  
 85.00 RR  
 1125.00 RR  
 1090.00 3.9  
 840.00  
 248.10  
 252.27  
 280.00

The Northwestern Mutual Life Insurance Co  
 1441.01

7995



LOGAN COUNTY  
 UNION COUNTY