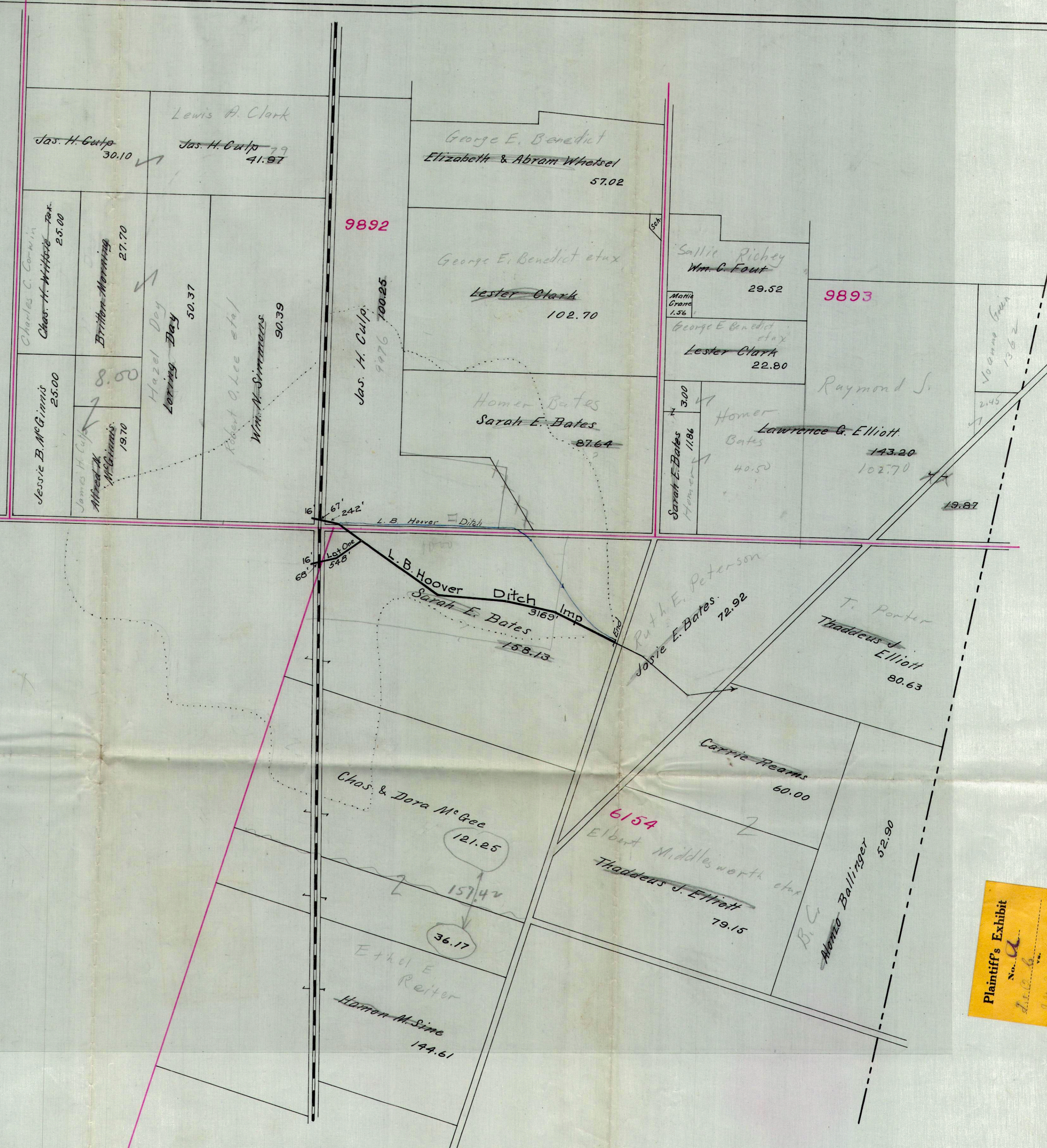


L. B. HOOVER  
DITCH  
IMPROVEMENT  
BOKESCREEK TP,  
1916



Jas. H. Culp 30.10  
Lewis A. Clark  
Jas. H. Culp 41.97

Charles C. Corwin  
Chas. H. Whitteck 25.00  
Britton Manning 27.70  
Hazel Day  
Loring Day 50.37  
Robert A. Lee et al  
Wm. N. Simmons 90.39

Jessie B. McGinnis 25.00  
James H. Culp 8.00  
Alfred M. McGinnis 19.70

George E. Benedict  
Elizabeth & Abram Whetsel 57.02

9892  
George E. Benedict et ux  
Lester Clark 102.70

Jas. H. Culp 9976 700.25  
Homer Bates  
Sarah E. Bates 87.64

Sallie Richey  
Wm. C. Fout 29.52  
Moriah Grant 1.56  
George E. Benedict et ux  
Lester Clark 22.80

9893  
Sarah E. Bates  
Homer 11.86  
Homer Bates 40.50  
Raymond J.  
Lawrence G. Elliott 143.20  
102.70  
19.87

Volcano Iron 1362  
2145  
19.87

N.W. Mut. S. Ins. Co  
Parrett & Stinson  
7995  
1441.01

Chas. & Dora McGee 121.25  
157.42  
36.17

Ethel E. Reiter  
Harrison M. Sime 144.61

Ruth E. Peterson  
Jobie E. Bates 72.92

6154  
Elbert Middlesworth et ux  
Thaddeus J. Elliott 79.15

T. Porter  
Thaddeus J. Elliott 80.63

Carrie Reams 60.00  
B. G. Alamo Ballinger 52.90

Defendant's Exhibit  
No. 1  
3-20-16  
H. B. Hoover et al

Plaintiff's Exhibit  
No. 2  
3-20-16  
H. B. Hoover et al