

2nd Ditch in Buckenroth

S.36

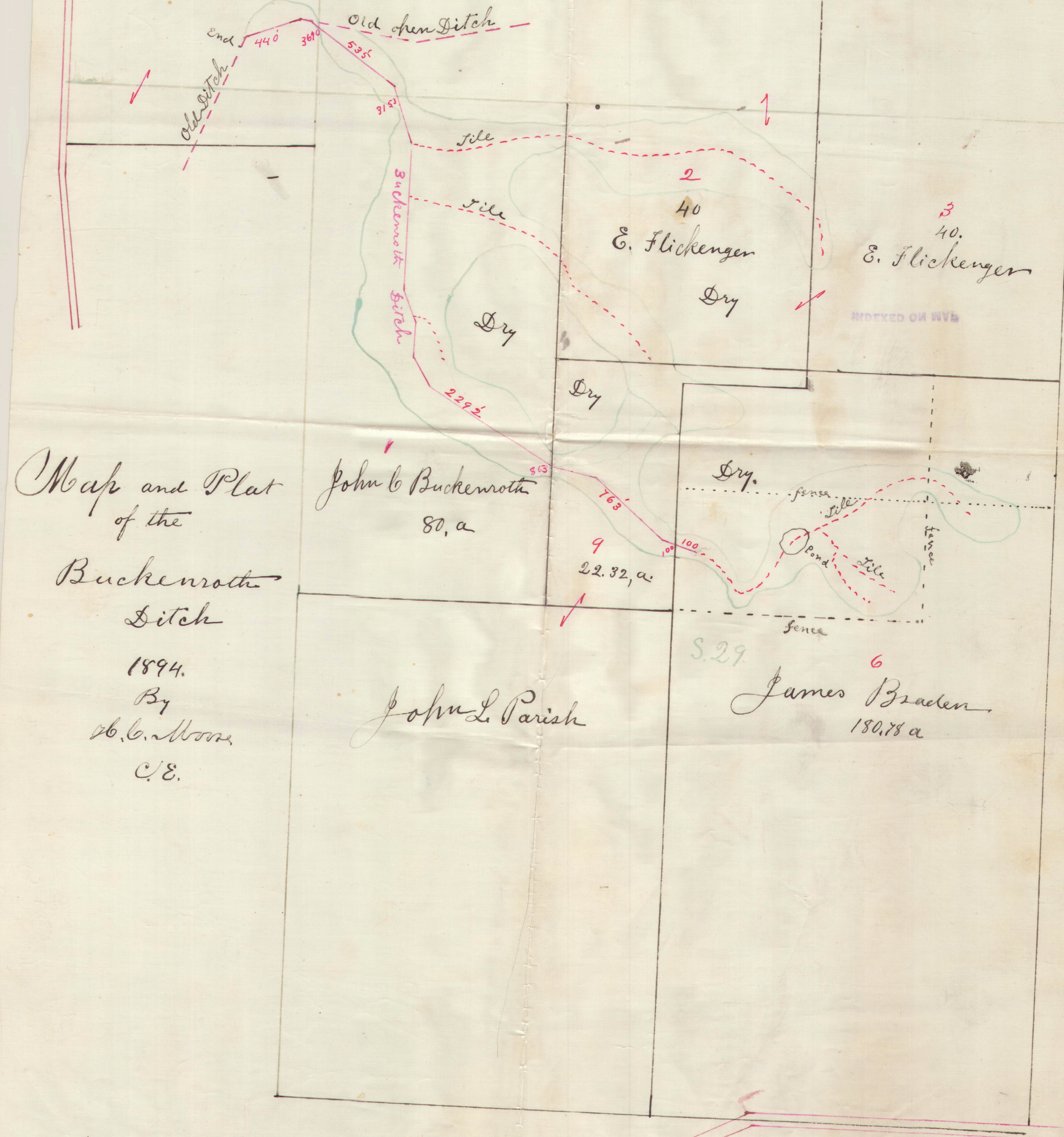
Joseph James Longbrake

80 a

S.30

Edward Flickenger

102,80 a



Map and Plat
of the
Buckenroth
Ditch

1894.
By
A. C. Moore
C.E.

John C. Buckenroth
80, a

John L. Parish

9
22,82, a

S.29

James Braden
180,78 a

2
40
E. Flickenger
Dry

3
40
E. Flickenger

Dry

Pond

fence

INDEXED ON N.V.S.